

Facing Line

# DRCOS

SITE <http://dr-cos.info/en> <http://dr-cos.com/jp>

MAIL [info@dr-cos.com](mailto:info@dr-cos.com)

Twitter [https://twitter.com/drcos\\_com](https://twitter.com/drcos_com)

facebook <https://www.facebook.com/drcoscom>

Bonding line Aa

Bonding line AA

Bonding line AA

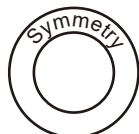


Grain Line



Bonding line Ba

# Children's 8



Young Witch  
Front Body  
one sheets

Bonding line AB

# ONE SHEETS

Bonding line AB

Bonding line Ca

Seam allowance 1/2in.

Bonding line AC

Bonding line Aa

Bonding line Ab

Wance 1/2in.



Bonding line BA

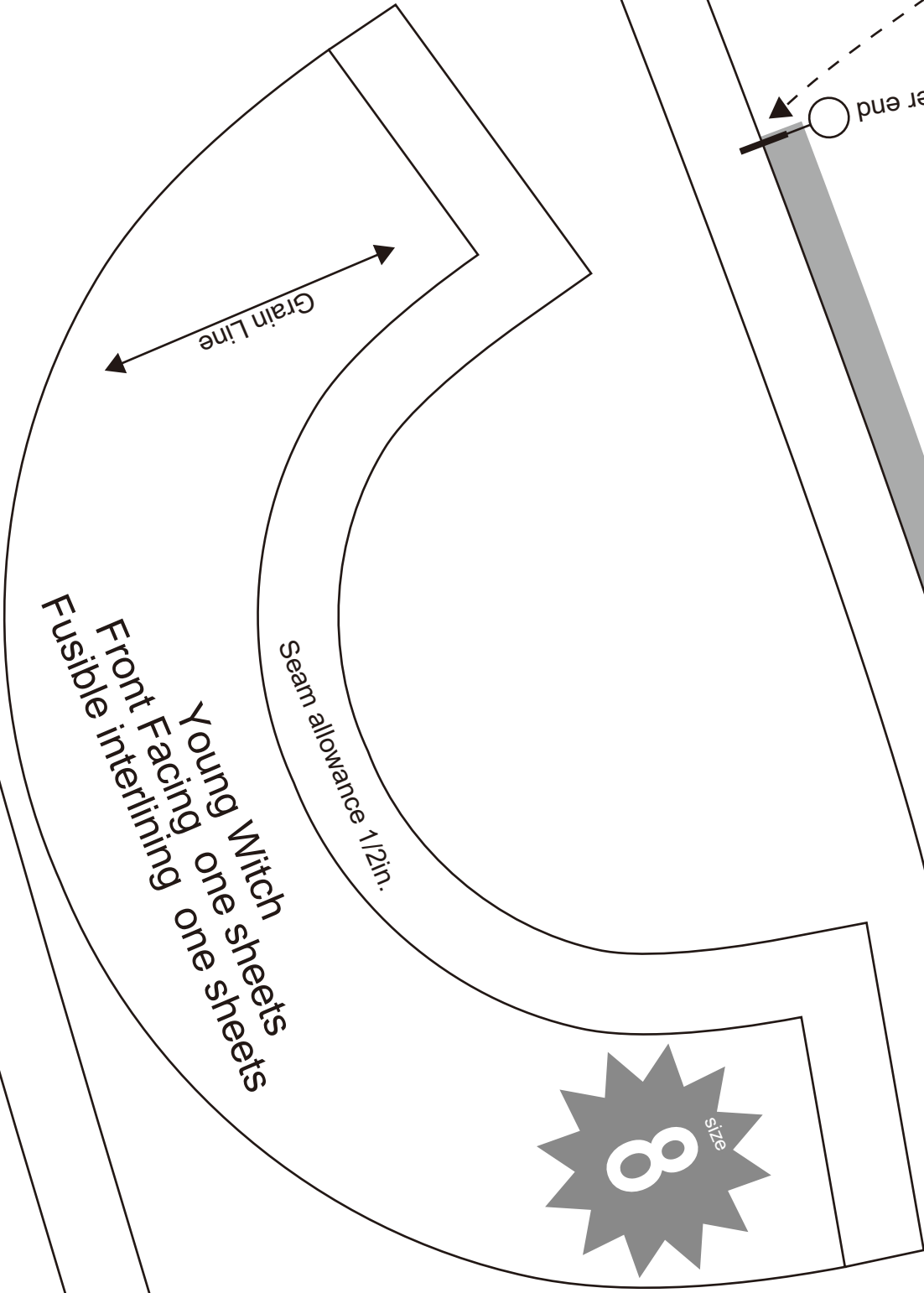
Bonding line BA

Baste

Fastener end

Bonding line Ba

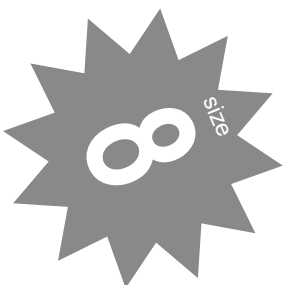
Bonding line Bb



Front Facing one sheets  
 Fusible interlining one sheets

Seam allowance 1/2in.

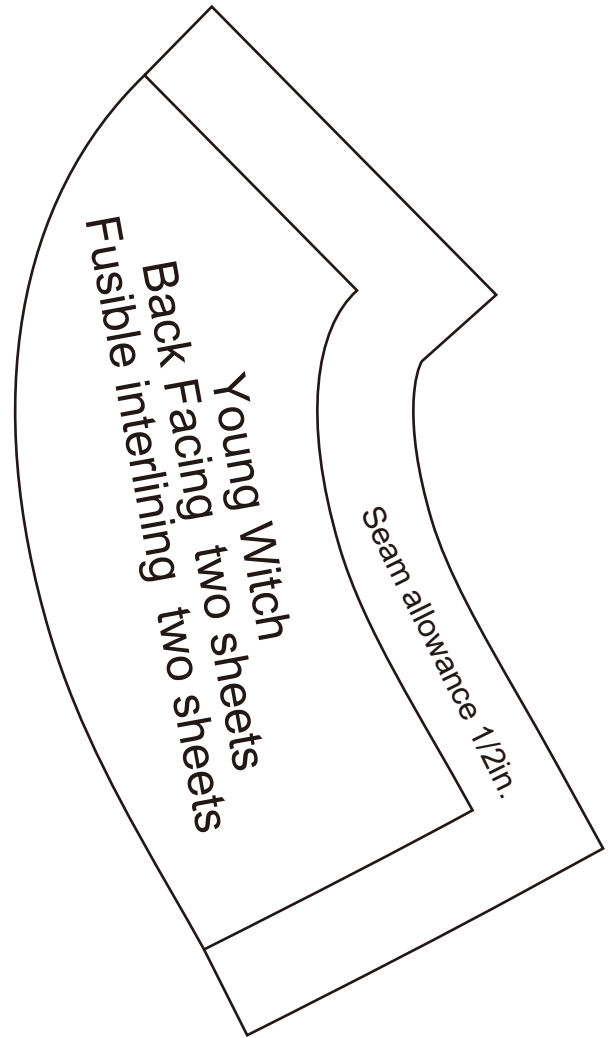
Grain Line



Bonding line BB

Bonding line BB

Fusible Stay tape



Bonding line Ca

Bonding line Cb



Bonding line BC

Bonding line BC

Bonding line Da

Back

# Children's size 8

Young Witch  
Sleeve  
two sheets

Bonding line Db



Seam allowance 1/2in.

Bonding line BD

Seam allowance 1

Bonding line Ab

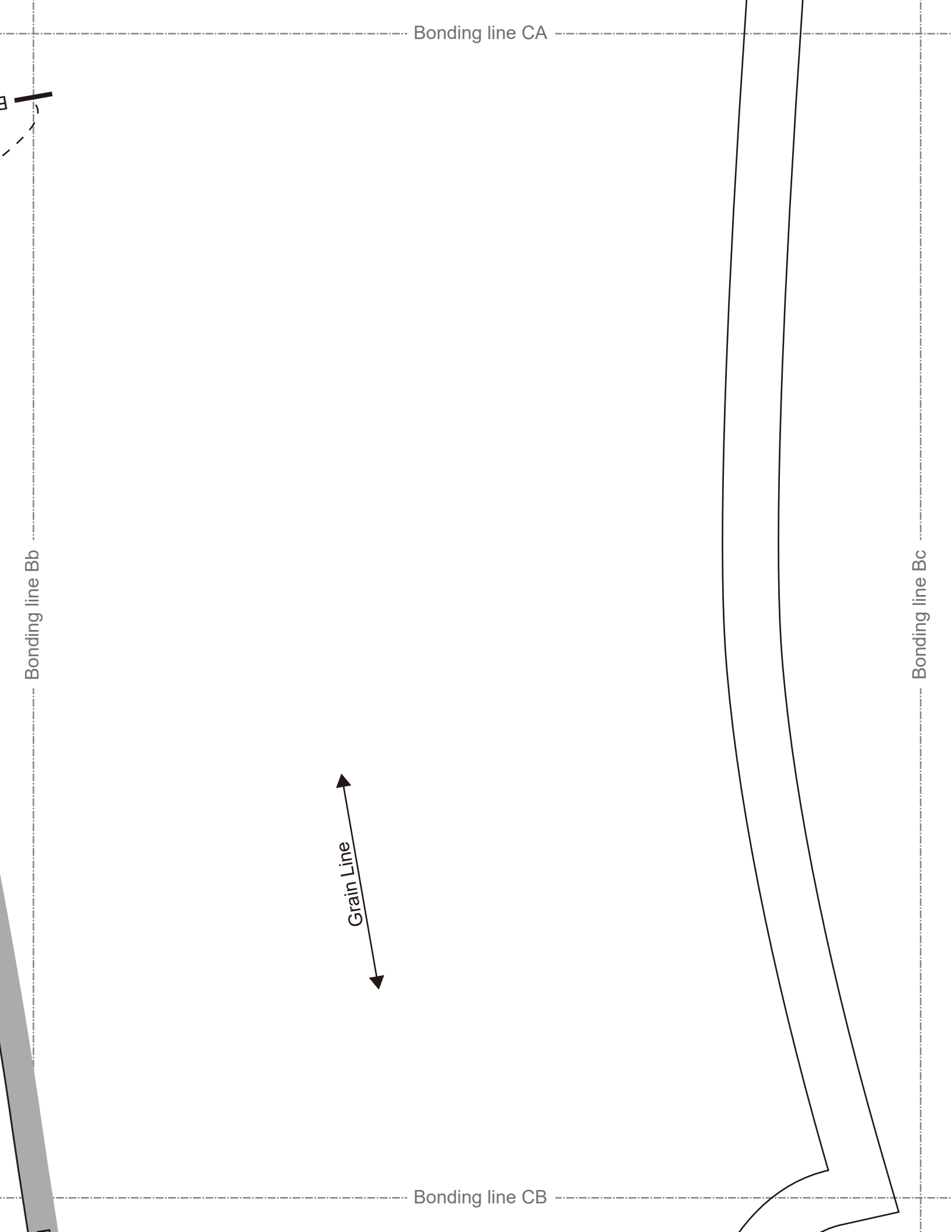
Bonding line Ac

Young Witch  
Back body  
two sheets

size 8  
**Children's**

Bonding line CA





Bonding line CB

Fusible Stay tape

Bonding line Cb

Facing Line

**DRCOS**  
 SITE <http://drcos.info/en> <http://drcos.com/pt>  
 MAIL [info@drcos.com](mailto:info@drcos.com)  
 Twitter [https://twitter.com/drcos\\_com](https://twitter.com/drcos_com)  
 Facebook <https://www.facebook.com/drcoscom>

Bonding line Cc

Bonding line CC

Bonding line CC

Front



Bonding line Db

Bonding line Dc

1/2in.

Bonding line CD