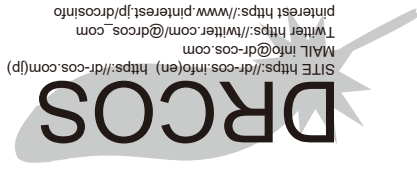


Seam allowance 1in.



Bonding line AA

Bonding line Aa

Bonding line AA

Seam allowance 1/2in.

Widpants
Front Bodice
cut two



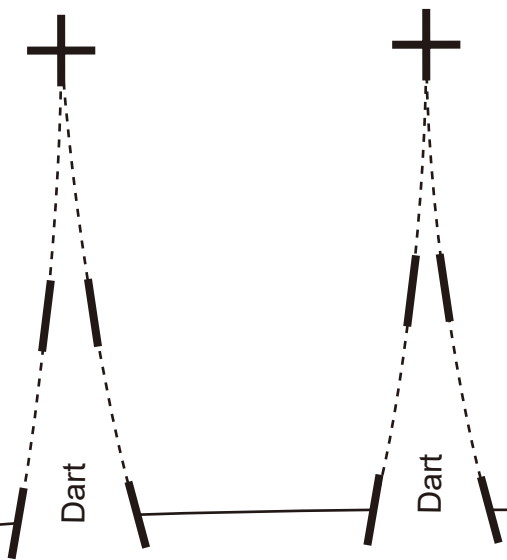
Bonding line Ba

Bonding line AB

CHILDREN'S

Bonding line AB

Crotch end



Bonding line Ca

Grain Line

Children

Bonding line AC

Bonding line Aa

Bonding line Ab

Bonding line BA

Baste

Dart

Dart



Bonding line BA

Children's

Widpants
Back Bodice
cut two

Seam allowance 1/2in.

Bonding line Ba

Bonding line Bb



Bonding line BB

Bonding line BB

Bonding line Ca

Bonding line Cb

DRCOS

SITE <https://dr-cos.info/en> <https://dr-cos.com/jp>
MAIL info@dr-cos.com
Twitter https://twitter.com/@drcos_com
pinterest <https://www.pinterest.jp/drcosinfo>

Seam allowance 1in.

men's ^{size} **4**

Widpants
Waist Band
Interfacing
cut one

Seam allowance 1/2in.

Bonding line BC

Bonding line Ab

Bonding line Ac

DRCOS

SITE <https://dr-cos.info/en> <https://dr-cos.com/jp>
MAIL info@dr-cos.com
Twitter https://twitter.com/drcos_com
pinterest <https://www.pinterest.jp/drcosinfo>

size

4

Widpants
Fly extention
Interfacing
cut one

Crotch end

Grain Line

Seam allowance 1/2in.

Sew double-stitch

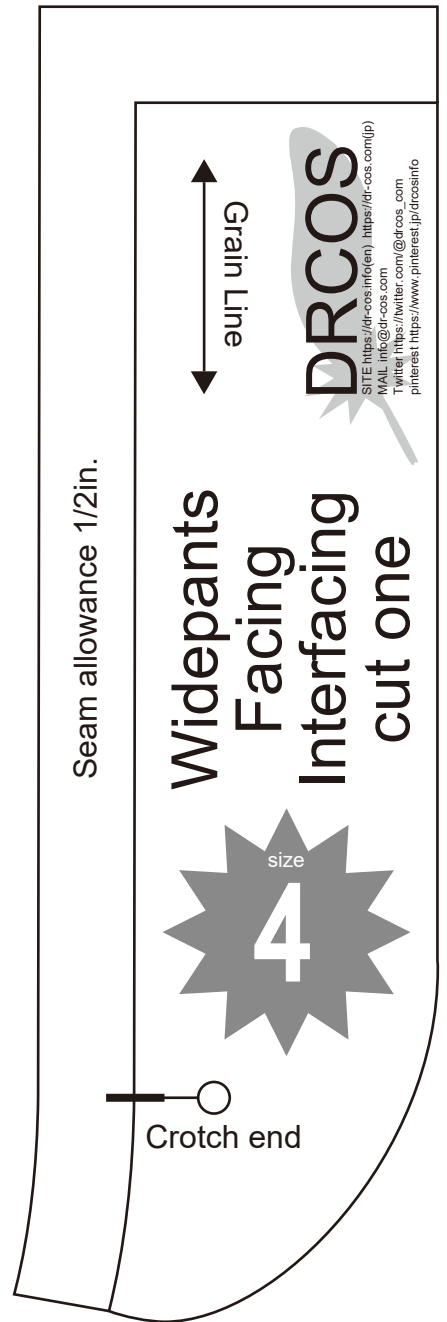
Bonding line CA

n's ^{size} 4

ts
ice

Bonding line Bb

Bonding line CA



Bonding line CB

Bonding line Bc

Bonding line CB

Bonding line Cb

1in.

Bonding line Cc

DRCOS

SITE <https://dr-cos.info/en> <https://dr-cos.com/jp>
MAIL info@dr-cos.com
Twitter https://twitter.com/drcos_com
pinterest <https://www.pinterest.jp/drcosinfo>

extension

Bonding line CC