

nce 1/1n.

[SITE http://dr-cos.info/en](http://dr-cos.info/en) <http://dr-cos.com/jp>  
[MAIL info@dr-cos.com](mailto:info@dr-cos.com)  
[Twitter https://twitter.com/drcos](https://twitter.com/drcos)  
[Facebook https://www.facebook.com/drcoscom](https://www.facebook.com/drcoscom)



Grain Line  $\longleftrightarrow$  Bonding line Aa

Seam allowance 1/2in.

Bonding line AA

1/2in.

Bonding line AA

one sheets  
Front body  
Trapezoid Skirt

Bonding line Ba

**DIE'S IT!**  
size

Bonding line AB

Bonding line AB

Baste

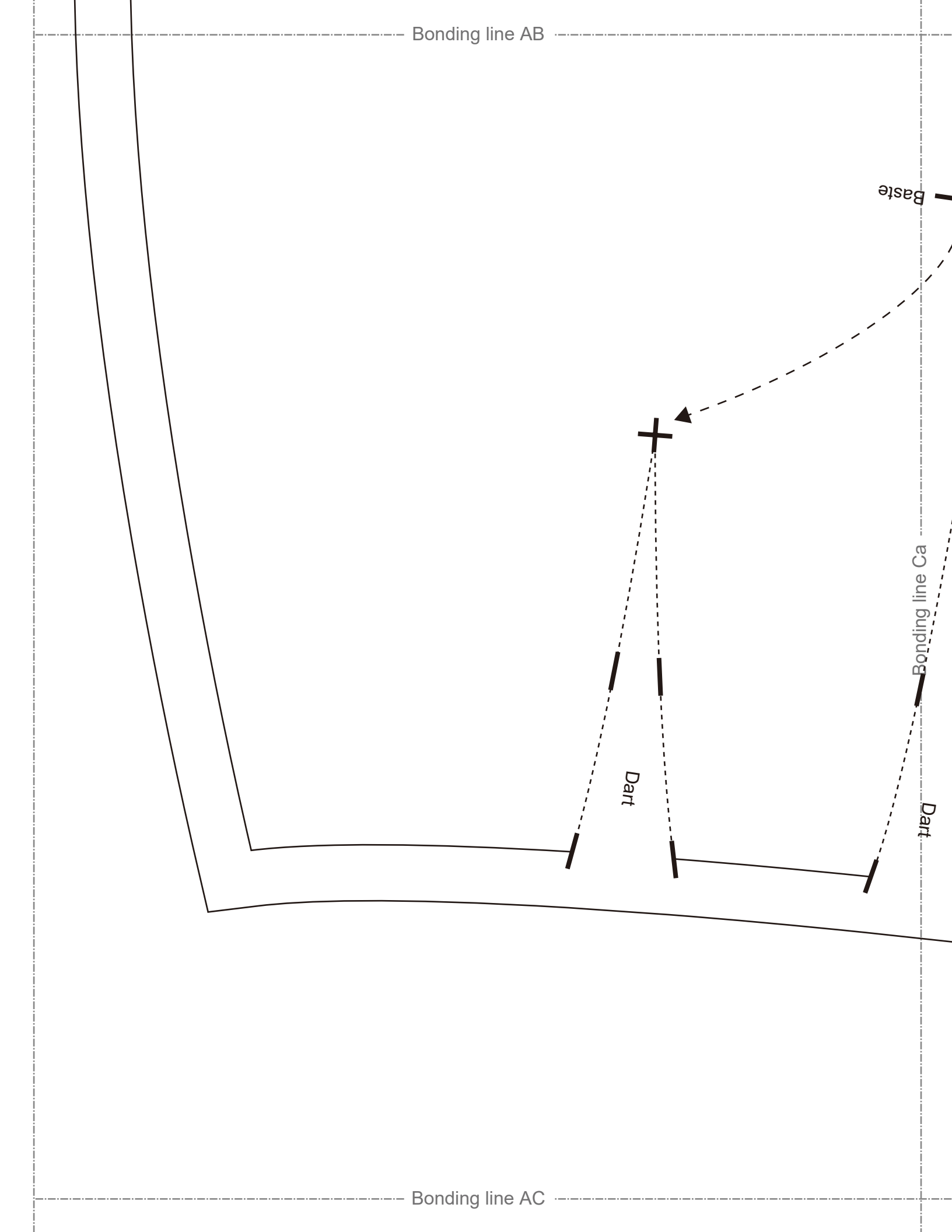


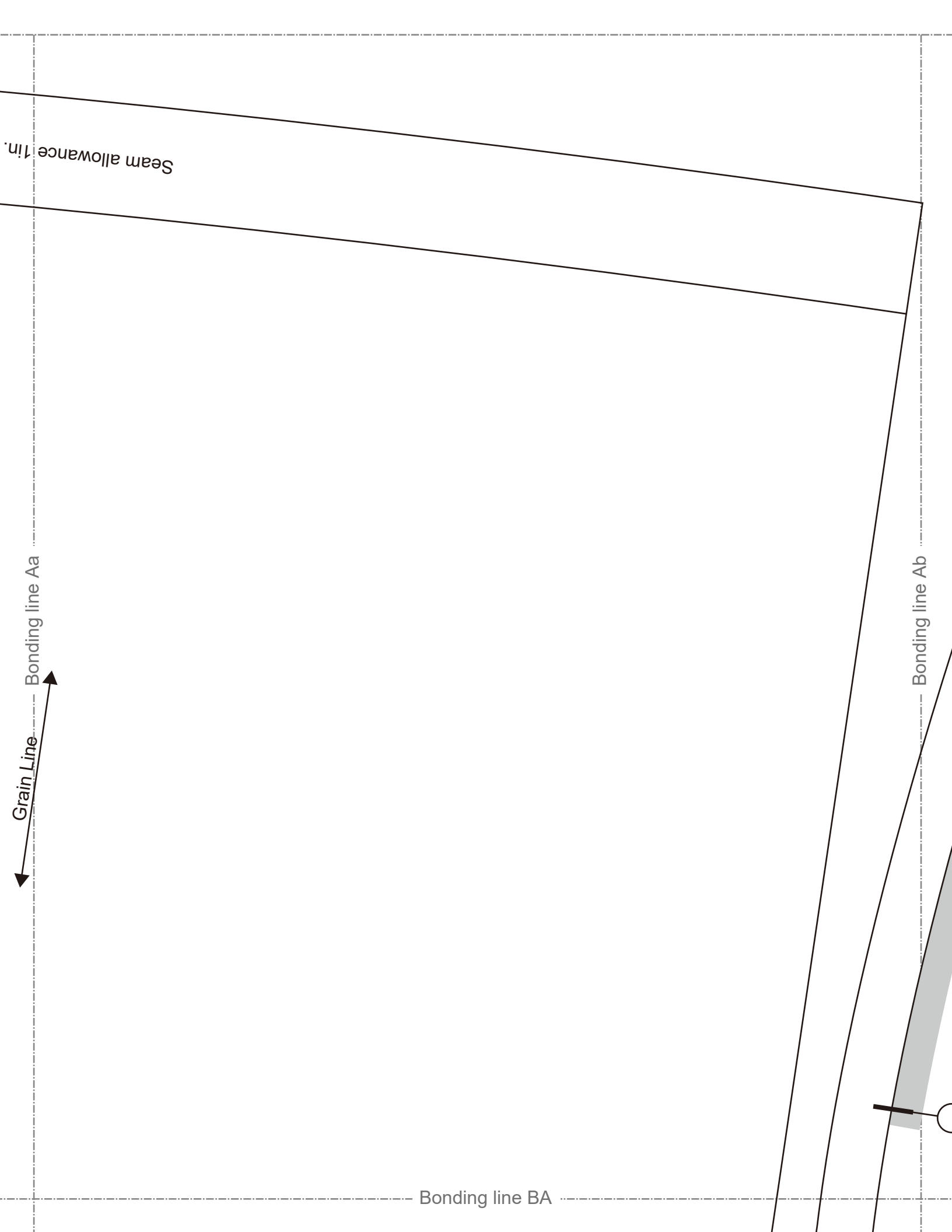
Bonding line Ca

Dart

Dart

Bonding line AC





Bonding line BA

Bonding line BB

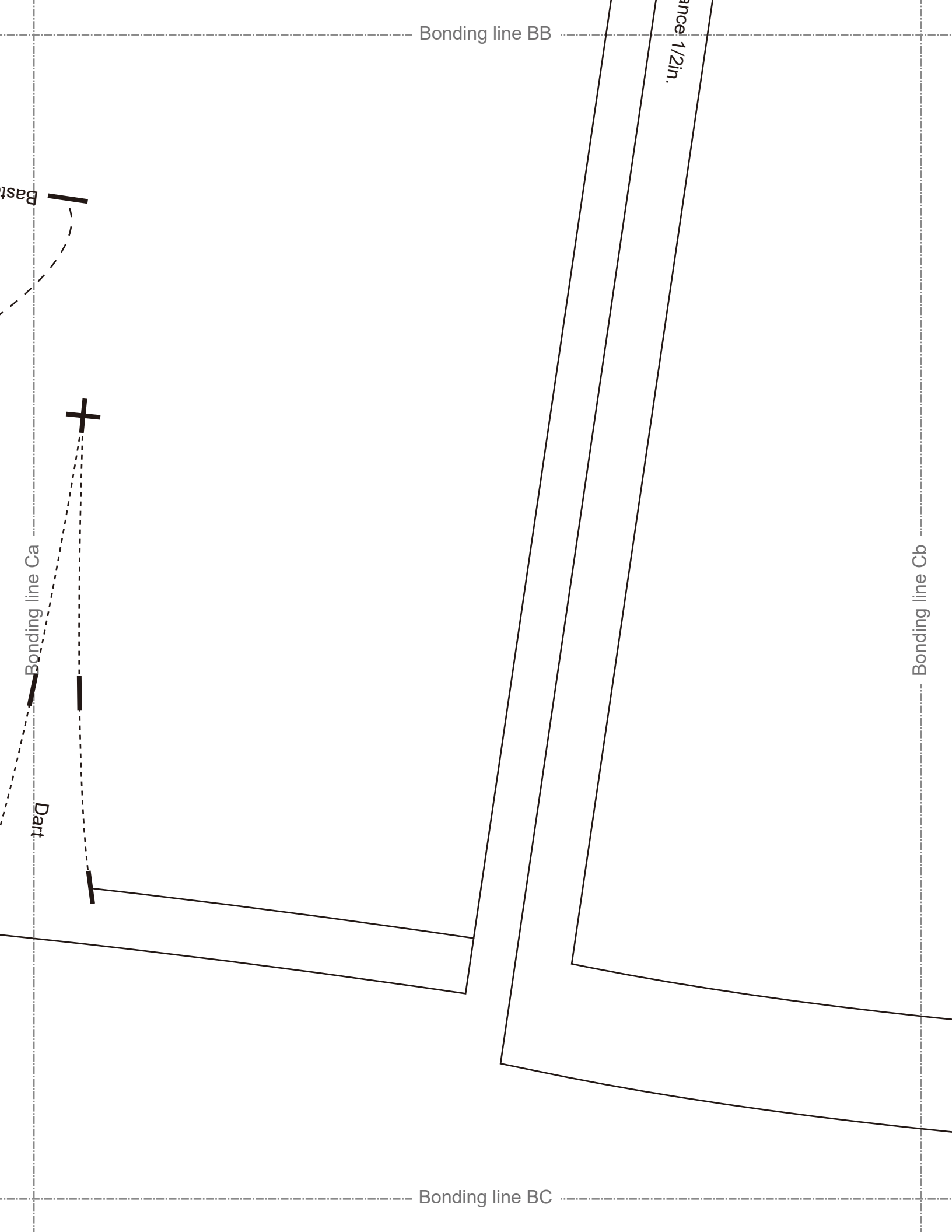
Bonding line Bb

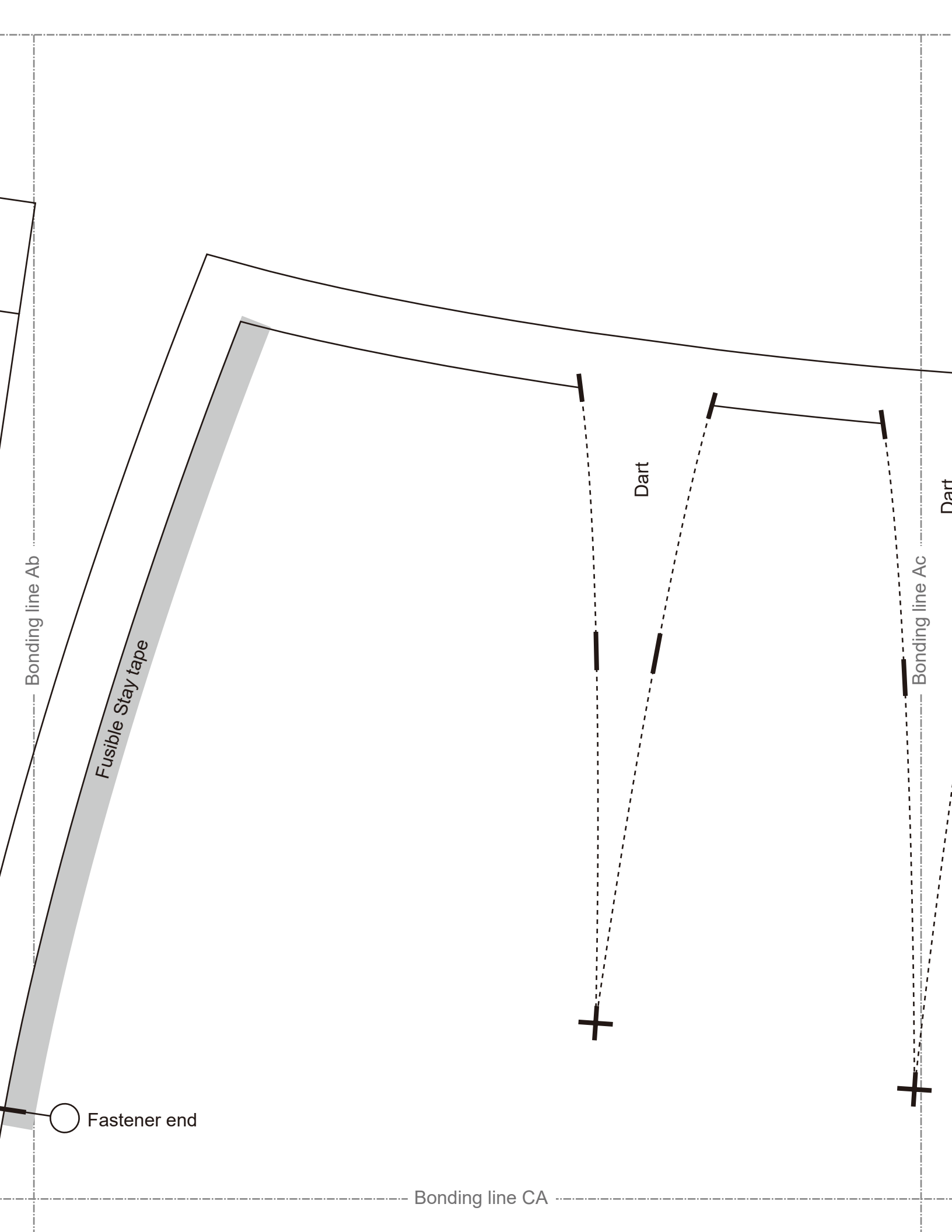
LAD

Tra  
Fr  
on



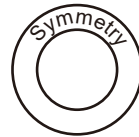
Seam allowance 1/2"





# LADIES' size

Trapezoid Skirt



Back body  
one sheets



Bonding line CB



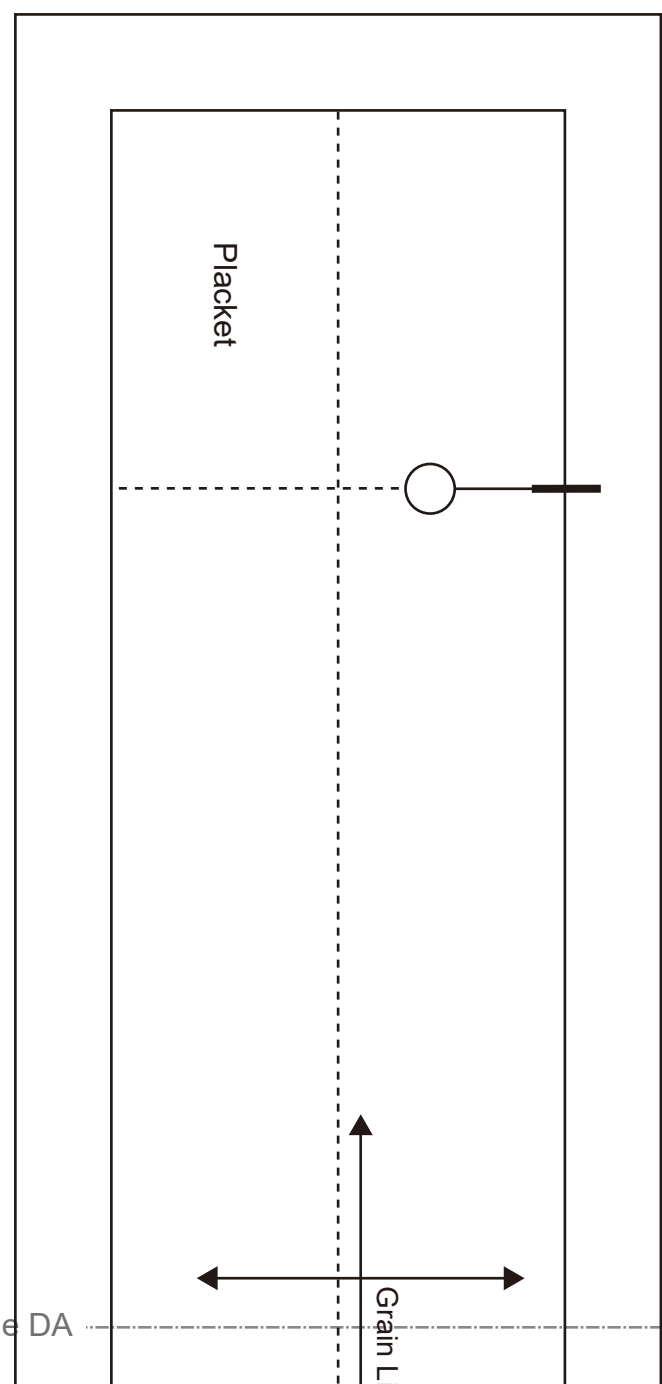
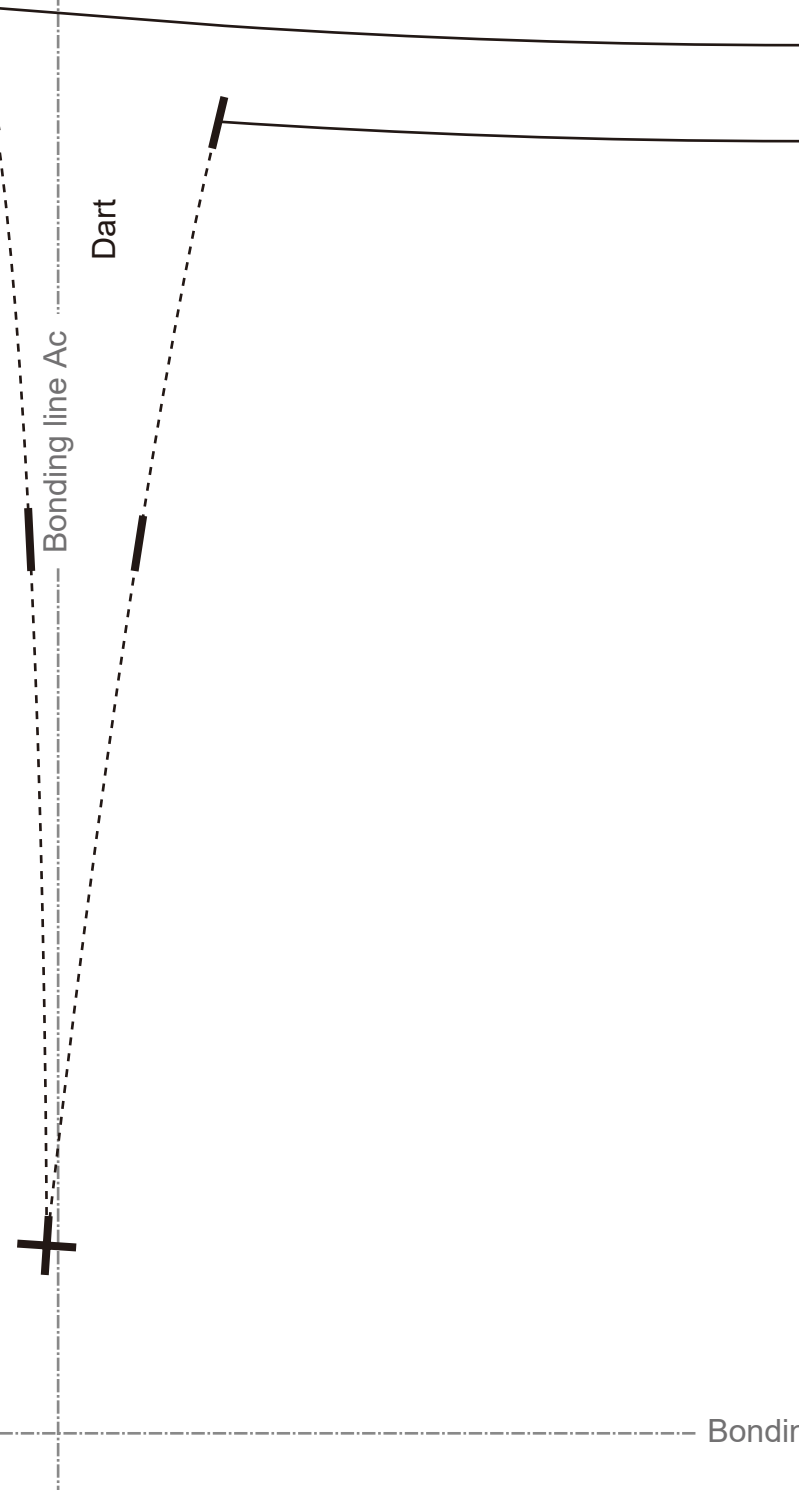
Grain Line

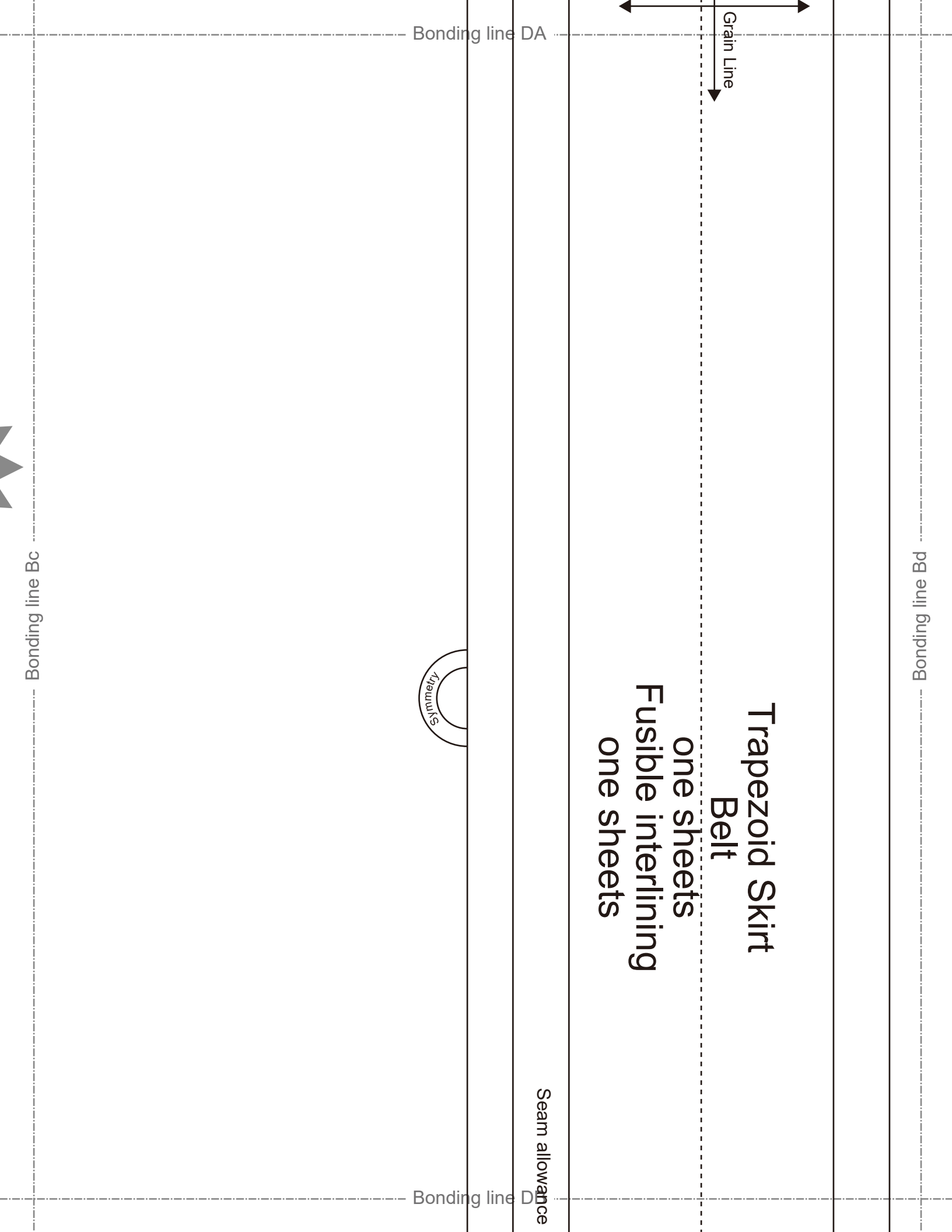
Bonding line Cb

Bonding line Cc

Seam allowance 1in.

Bonding line CC





Bonding line Bc

Bonding line DA

Grain Line

Symmetry

Seam allowance

Bonding line D

Bonding line Bd

Trapezoid Skirt  
Belt  
one sheets  
Fusible interlining  
one sheets

Bonding line Cc

Bonding line D

Advance 1/2In.

**DRCOS**  
SITE [http://dr-cos.info\(en\)](http://dr-cos.info(en)) [http://dr-cos.com\(jp\)](http://dr-cos.com(jp))  
MAIL [info@dr-cos.com](mailto:info@dr-cos.com)  
Twitter [@drcos\\_com](https://twitter.com/@drcos_com)  
facebook <https://www.facebook.com/drcoscom>

Bonding line DC

**LADIES'S IT**  
size

Bonding line Cd

Bonding line Dc

Bonding line DC



Bonding line Dd

Bonding line DD