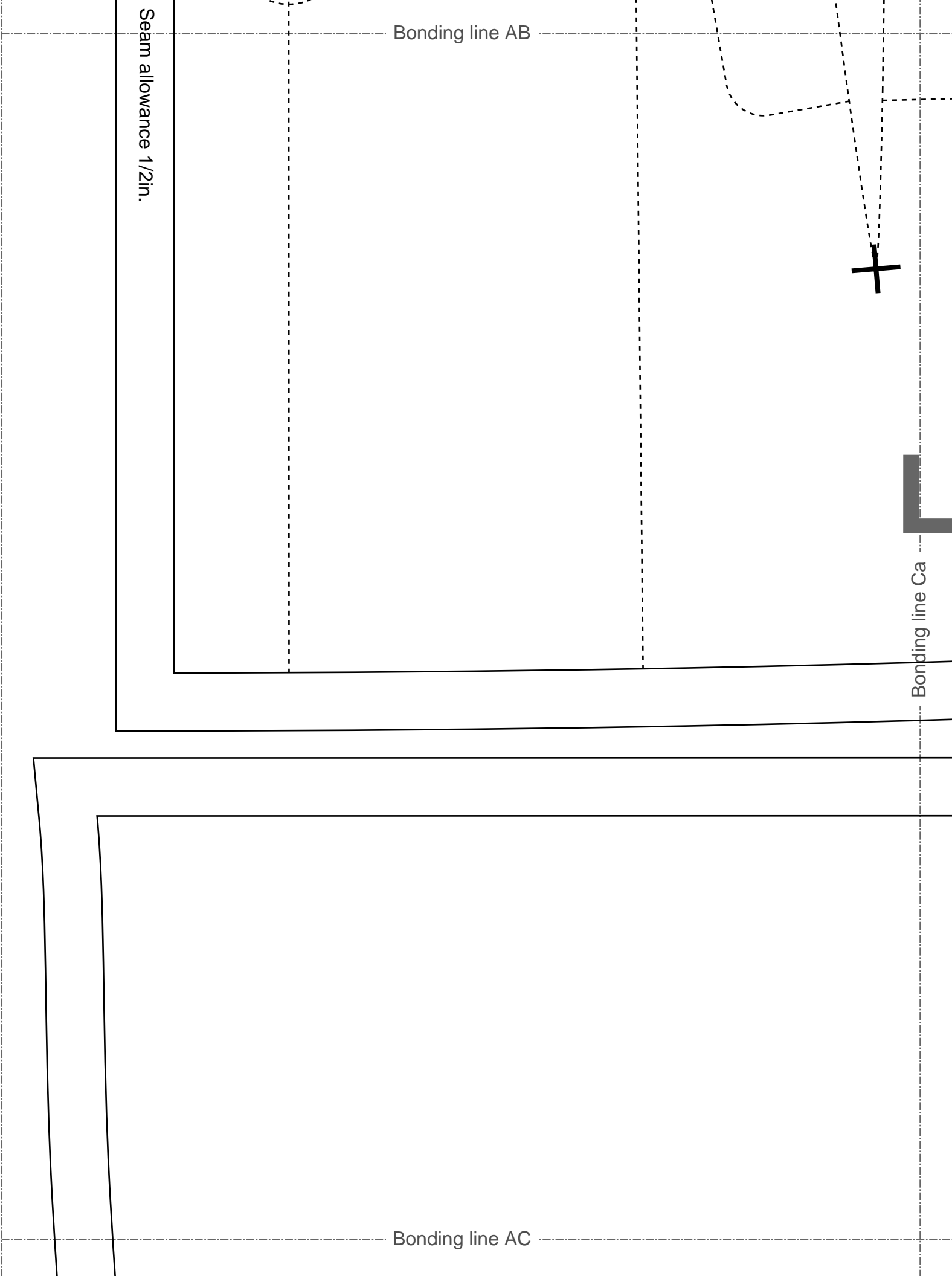


Seam allowance 1/2in.

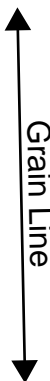
Bonding line AB

Bonding line Ca

Bonding line AC



Bonding line AC



Grain Line

Bonding line Da

Tailorcollarjacket3  
Back Body  
two sheets



Page 40

# LADIES' T

size

Bonding line Ea

Baste

**DRCOS**  
SITE <http://dr-cos.info/en> [http://dr-cos.com\(jp\)](http://dr-cos.com(jp))  
MAIL [info@dr-cos.com](mailto:info@dr-cos.com)  
Twitter [https://twitter.com/dr-cos\\_com](https://twitter.com/dr-cos_com)  
facebook <https://www.facebook.com/dr-cos.com>

Facing Line

Bonding line AE



Bonding line AE

darts

Seam allowance 1/2in.

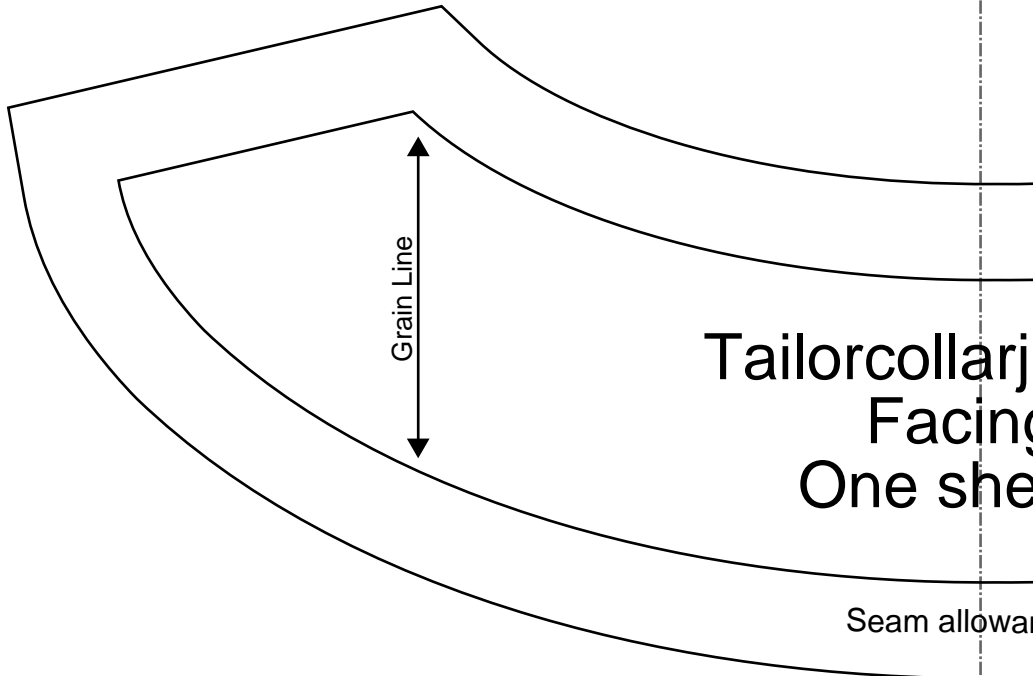


**DRCOS**  
 SITE [http://dr-cos.info\(en\)](http://dr-cos.info(en)) [http://dr-cos.com\(jp\)](http://dr-cos.com(jp))  
 MAIL [info@dr-cos.com](mailto:info@dr-cos.com)  
 Twitter [https://twitter.com/@drcos\\_com](https://twitter.com/@drcos_com)  
 facebook <https://www.facebook.com/drcoscom>

Grain Line

Tailorcollarjacket3  
 False pocket  
 one sheets

Bonding line Fa



Grain Line

Tailorcollarj  
 Facing  
 One she

Seam allowa

Bonding line AF

**DRCOS**

SITE <http://dr-cos.info/en/>, <http://dr-cos.com/>  
MAIL [info@dr-cos.com](mailto:info@dr-cos.com)  
Twitter <https://twitter.com/dr-cos>  
facebook <https://www.facebook.com/drcoscom>

Bonding line Aa

Bonding line Ab

Bonding line BA

sition



Tailorcollarjacket3  
Front Body  
two sheets

Bonding line BA

Bonding line Ba

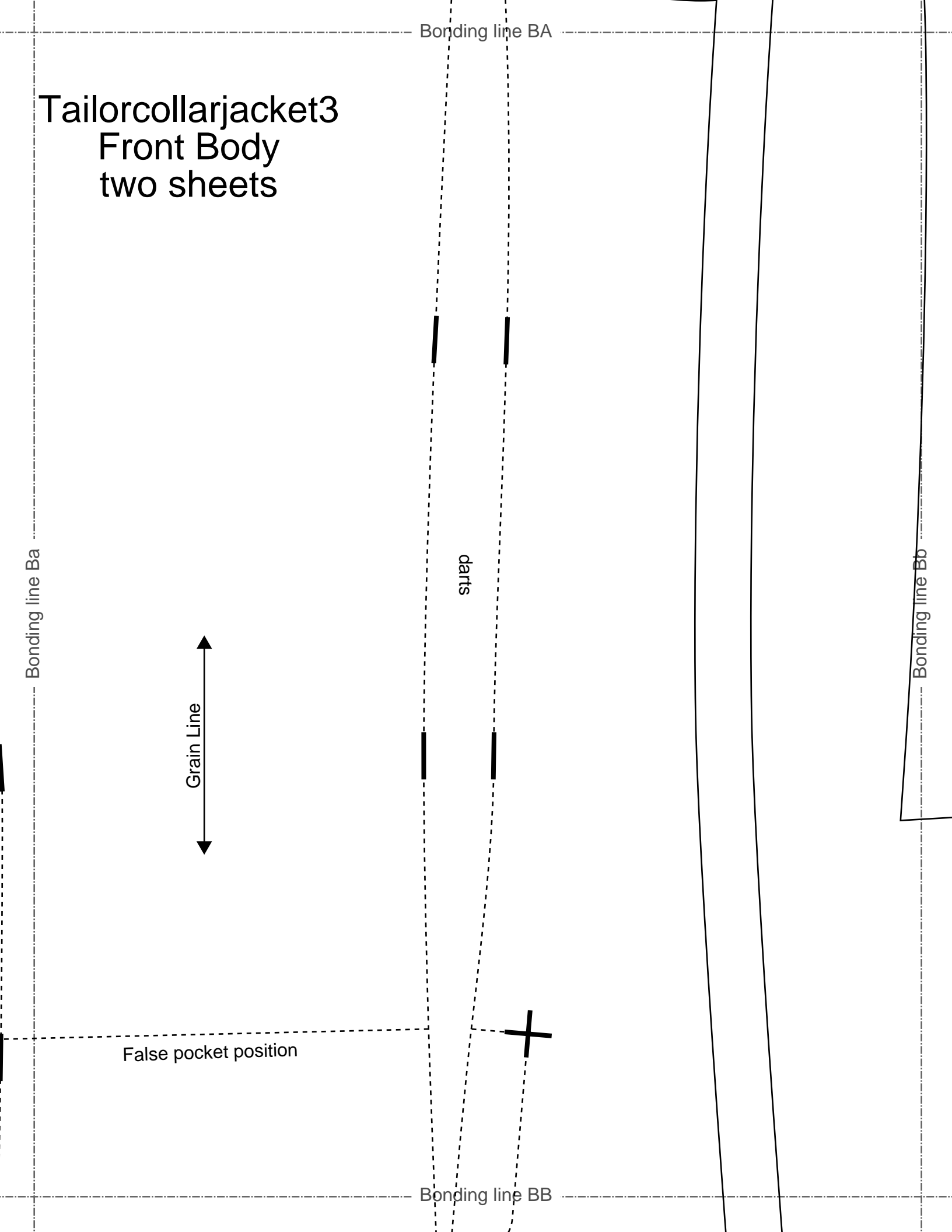


darts

False pocket position

Bonding line BB

Bonding line Bb





Bonding line BB



LADIES'  size

Bonding line Ca

Bonding line Cb

Bonding line BC

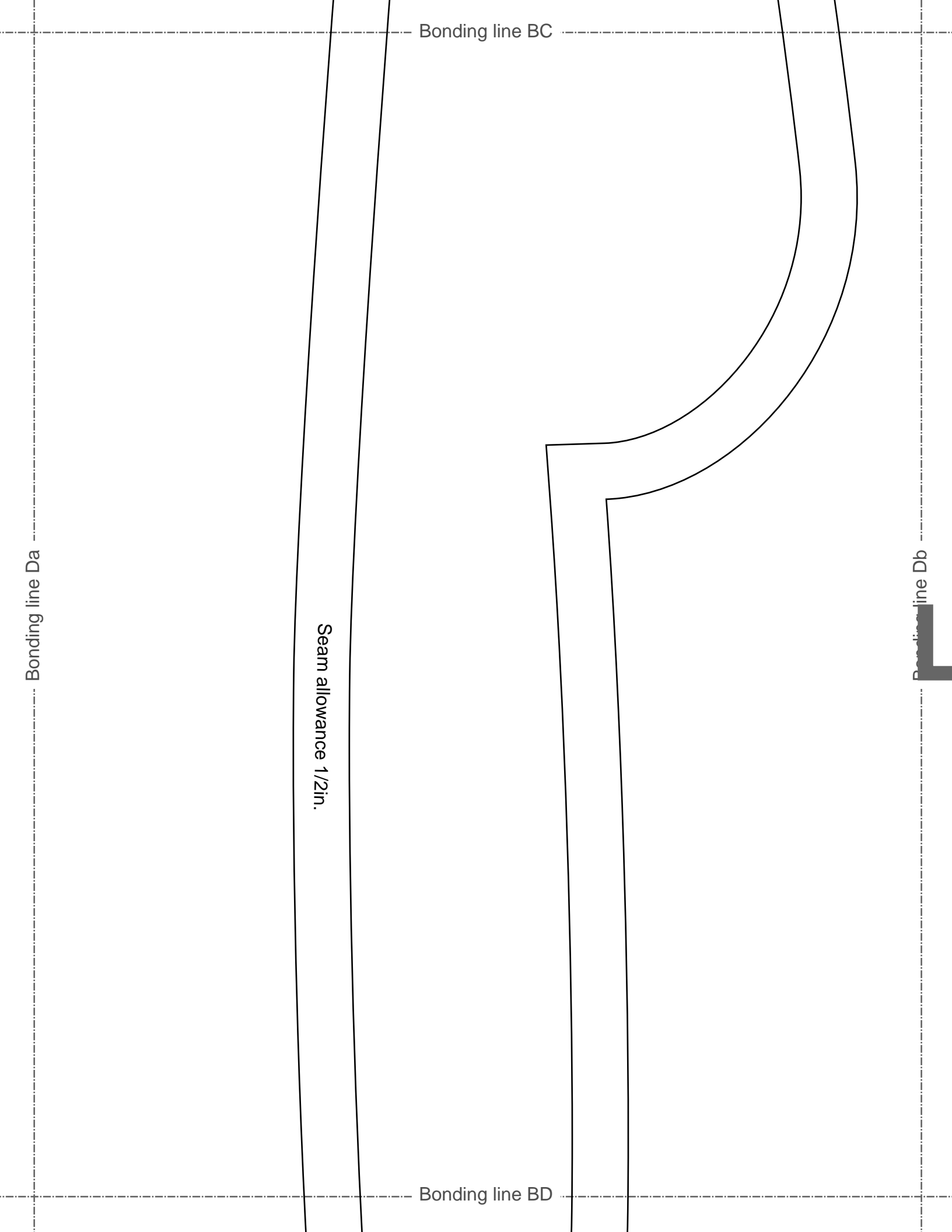
Bonding line Da

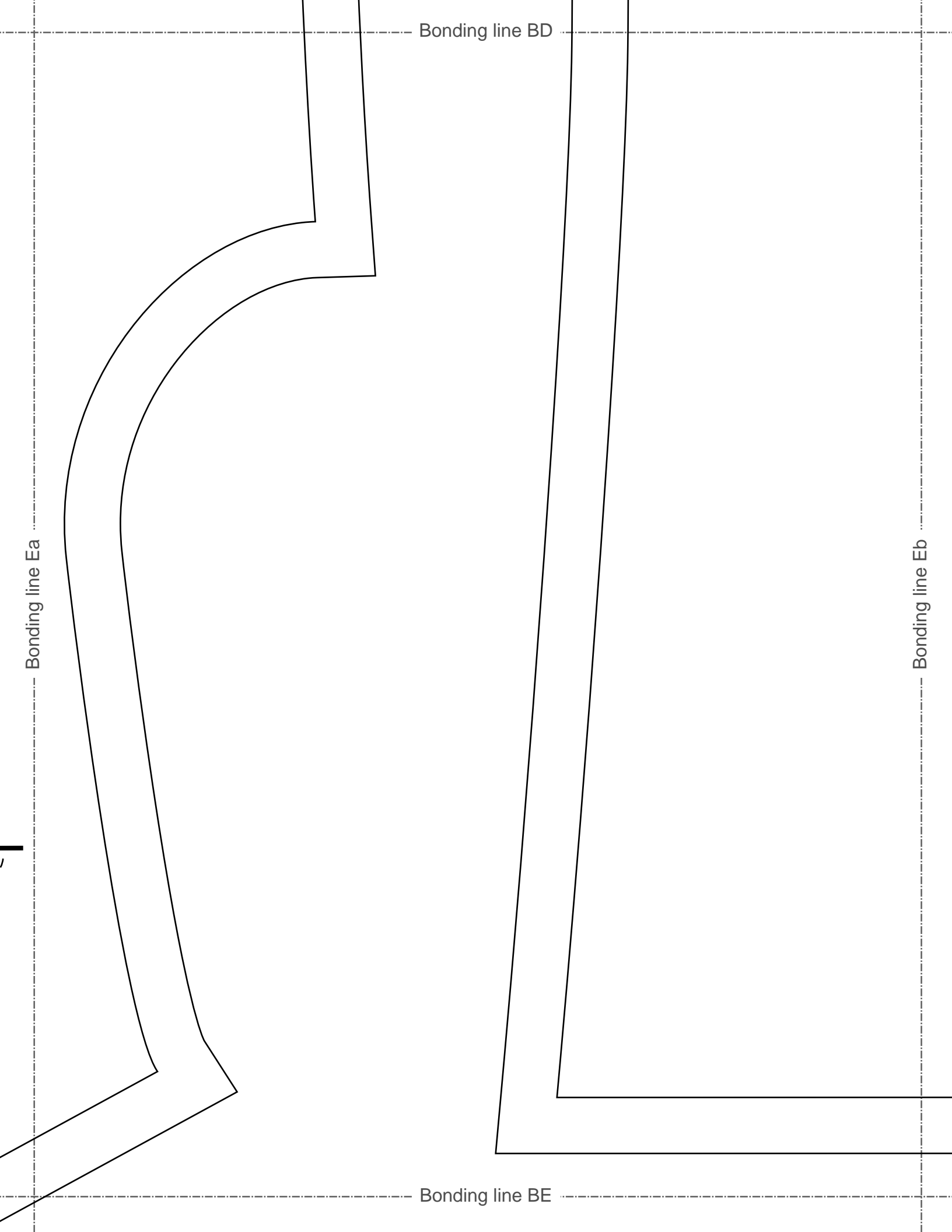
Bonding line BC

Seam allowance 1/2in.

Bonding line BD

Bonding line Db

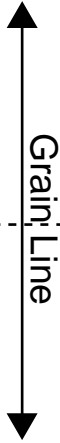




Seam allowance 1/2in.

**DRCOS**

SITE [http://dr-cos.info\(en\)](http://dr-cos.info(en)) [http://dr-cos.com\(jp\)](http://dr-cos.com(jp))  
MAIL [info@dr-cos.com](mailto:info@dr-cos.com)  
Twitter [https://twitter.com/@drcos\\_com](https://twitter.com/@drcos_com)  
facebook <https://www.facebook.com/drcoscom>



Tailorcollarjacket3  
False pocket  
two sheets

ollarjacket3  
acing  
sheets

**DRCOS**

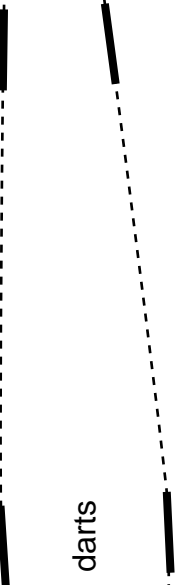
SITE [http://dr-cos.info\(en\)](http://dr-cos.info(en)) [http://dr-cos.com\(jp\)](http://dr-cos.com(jp))  
MAIL [info@dr-cos.com](mailto:info@dr-cos.com)  
Twitter [https://twitter.com/@drcos\\_com](https://twitter.com/@drcos_com)  
facebook <https://www.facebook.com/drcoscom>

allowance 1/2in.

# LADIES' size

Bonding line Ab

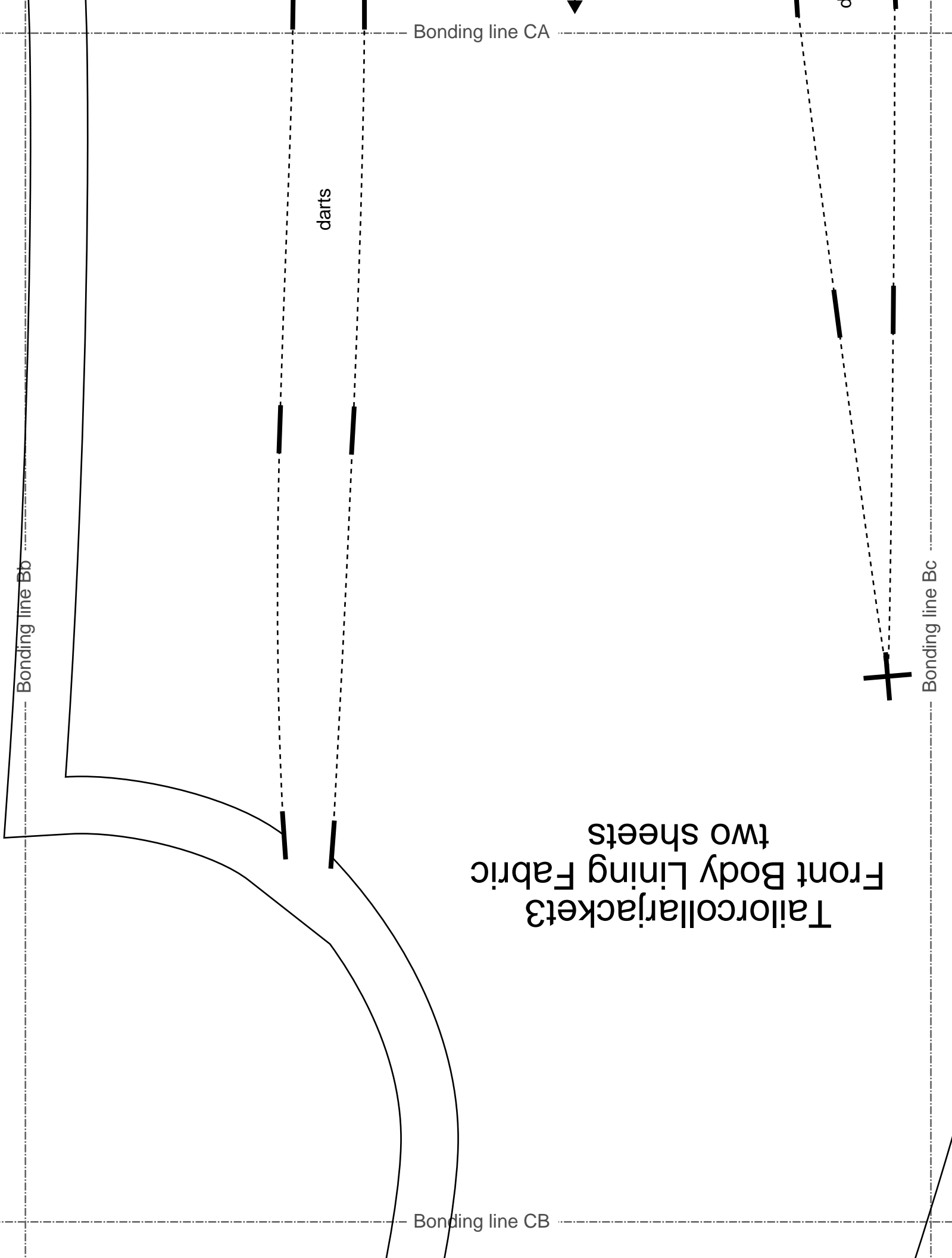
Bonding line Ac



Bonding line CA

darts

# Tailorcollarjacket3 Front Body Lining Fabric two sheets



Bonding line CB

**DRCOS**  
 SITE <http://dr-cos.info/en> <http://dr-cos.com/jp>  
 MAIL [info@dr-cos.com](mailto:info@dr-cos.com)  
 Twitter [https://twitter.com/dr-cos\\_com](https://twitter.com/dr-cos_com)  
 facebook <https://www.facebook.com/drcoscom>

Bonding line Cb

Bonding line Cc

darts



**DRCOS**

SITE <http://dr-cos.info/en> <http://dr-cos.com/jp>  
 MAIL [info@dr-cos.com](mailto:info@dr-cos.com)  
 Twitter [https://twitter.com/drcos\\_com](https://twitter.com/drcos_com)  
 facebook <https://www.facebook.com/drcoscom>

Bonding line CC

Bonding line CC

Bonding line Db

LADIES'  size

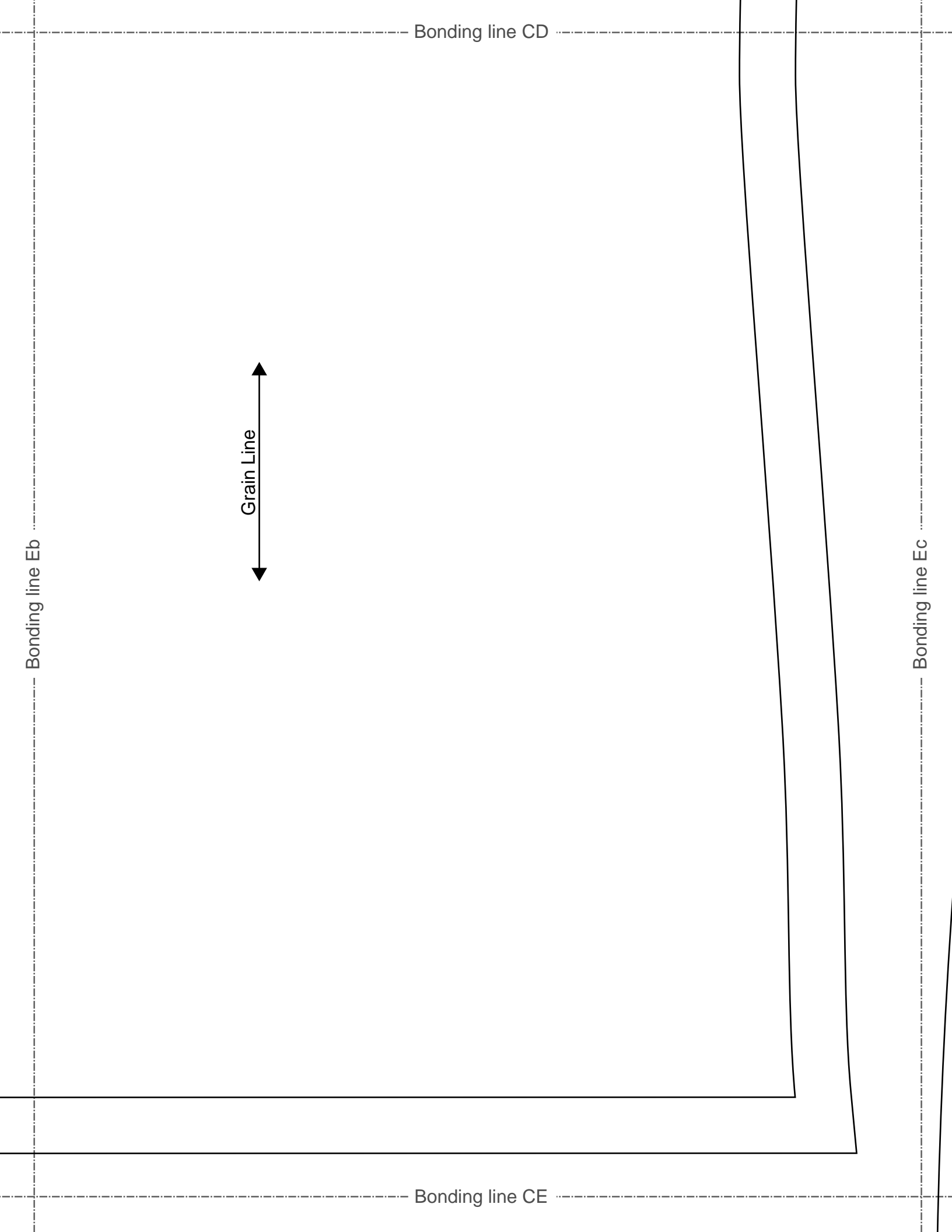
Tailorcollarjacket3  
Back Body Side  
two sheets

Seam allowance 1/2in.

Bonding line Dc

Bonding line CD



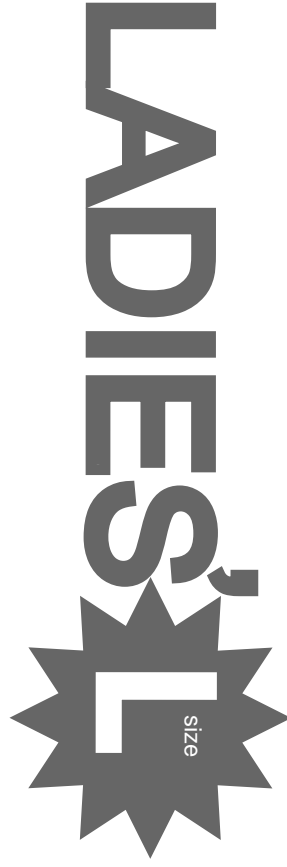


Bonding line Ac

Seam allowance 1/2in.

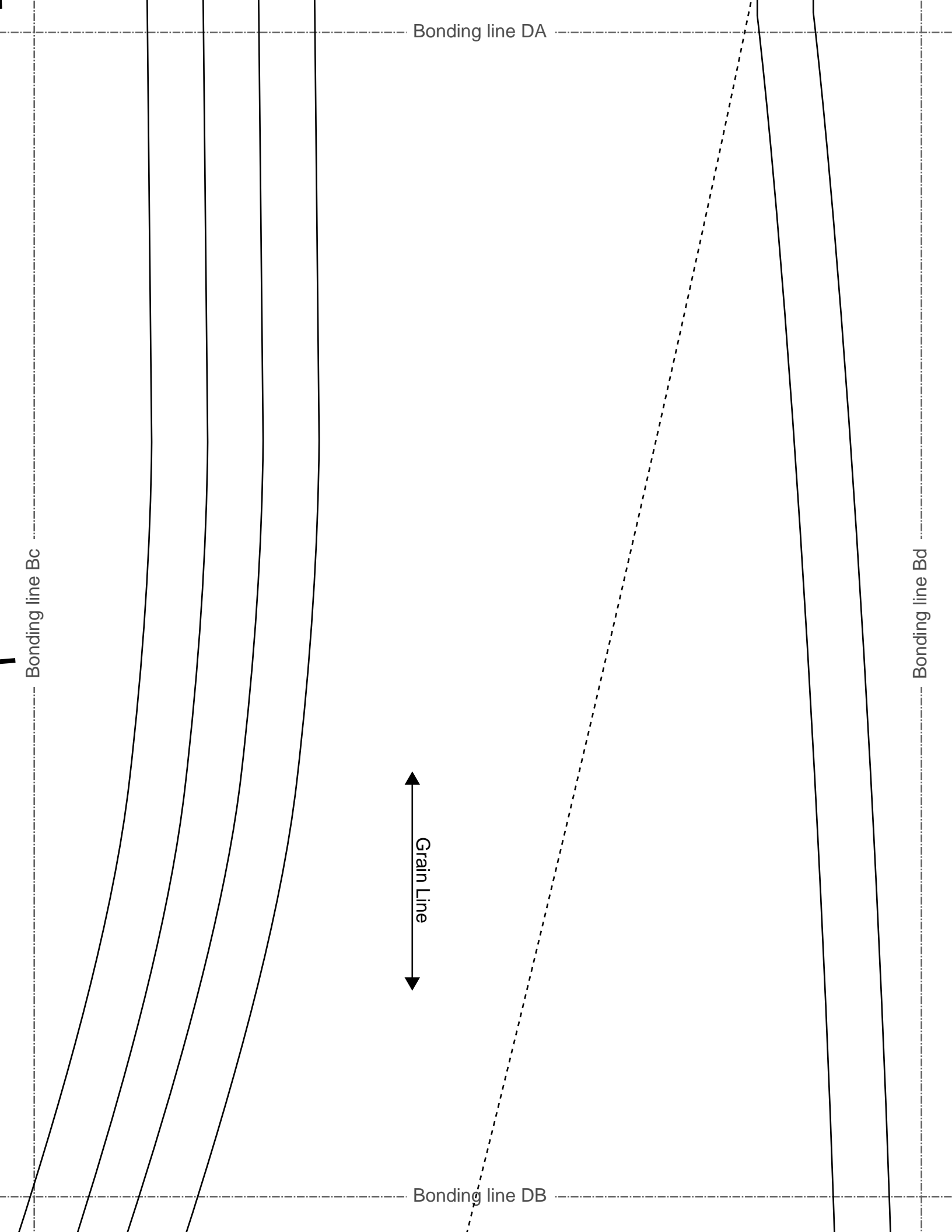
Tailorcollaryacket3  
Front Body Facing  
two sheets

Bonding line DA



Seam allowance 1/2in.

Bonding line Ad



Bonding line DB

Cut

Bonding line Cc

Bonding line Cd

Bonding line DC

Grain Line

SITE <http://dr-cos.info/>  
 MAIL [info@dr-cos.com](mailto:info@dr-cos.com)  
 Twitter <https://twitter.com/dr-cos>  
 Facebook <https://www.facebook.com/drcoscom>

**DRCOS**

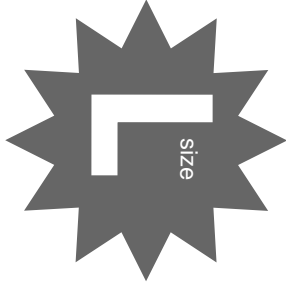
SITE <http://dr-cos.info/en/>  
 MAIL [info@dr-cos.com](mailto:info@dr-cos.com)  
 Twitter [https://twitter.com/dr-cos\\_com](https://twitter.com/dr-cos_com)  
 Facebook <https://www.facebook.com/drcoscom>

SITE <http://dr-cos.info/en/>  
 MAIL [info@dr-cos.com](mailto:info@dr-cos.com)  
 Twitter [https://twitter.com/dr-cos\\_com](https://twitter.com/dr-cos_com)  
 Facebook <https://www.facebook.com/drcoscom>

**DRCOS**

Bonding line DC

Seam allowance 1/2in.



LADIES'

Tailorcollarjackets3  
Taylor color  
one sheets

Bonding line DD

Bonding line Dc

Bonding line Dd

Bonding line DD

**DRCOS**

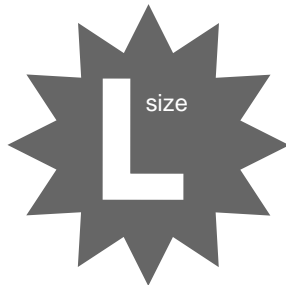
SITE [http://dr-cos.info\(en\)](http://dr-cos.info(en)) [http://dr-cos.com\(jp\)](http://dr-cos.com(jp))

MAIL [info@dr-cos.com](mailto:info@dr-cos.com)

Twitter [https://twitter.com/@drcos\\_com](https://twitter.com/@drcos_com)

facebook <https://www.facebook.com/drcoscom>

Bonding line Ec



**LADIES'**

Tailorcollarjacket3  
sleeve  
two sheets

Seam allowance 1/2in.

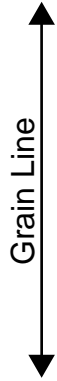
Bonding line DE

Bonding line Ed

Bonding line Fc

e 1/2in.

Bonding line DE



Grain Line

Bonding line DF

shirring sewing

DRCOS

g line Fd

rcos.com/ip

Bonding line EE

Bonding line Fd

**DRCOS**

SITE <http://dr-cos.info/en> <http://dr-cos.com/jp>  
MAIL [info@dr-cos.com](mailto:info@dr-cos.com)  
Twitter [@drcos\\_com](https://twitter.com/@drcos_com)  
facebook <https://www.facebook.com/drcoscom>

size

Bonding line Fd

LADIES'S

Bonding line EF



# LADIES'S size

Tailorcollarjacket3  
sleeve  
two sheets

Seam allowance 1/2in.

Bonding line FE

Bonding line FF

Bonding line Ff

