

Seam allowance 1/2in.

Center Line

Button position

Children

darts

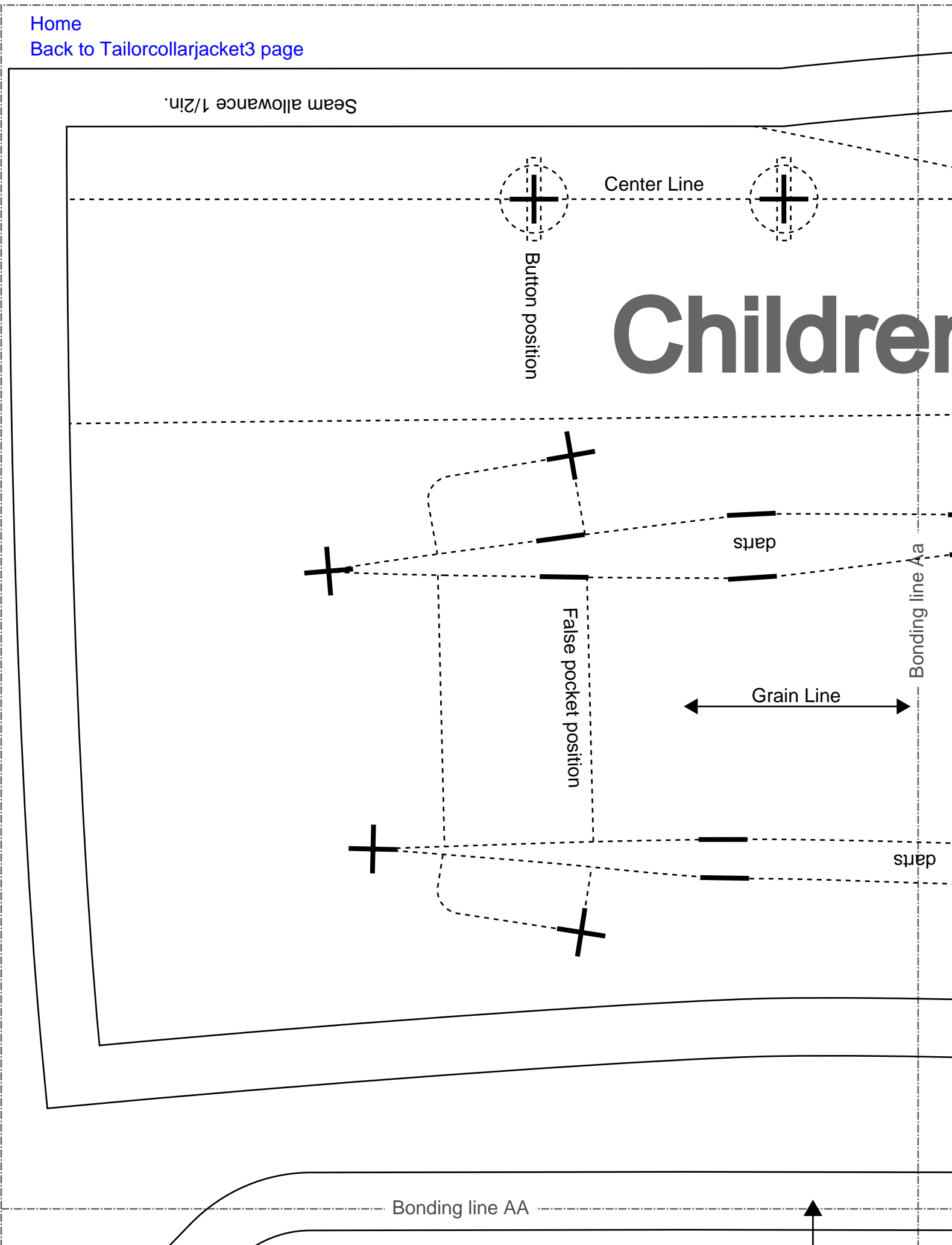
Bonding line Aa

Grain Line

False pocket position

darts

Bonding line AA



Bonding line AA

Grain Line

Tailorcollarjacket3
Taylor color
one sheets



Seam allowance 1/2in.

SCOS
/dr-cos.com(pdf)
cos.com
com/drcoscom

Cut

Grain Line

DRCOS
SITE <http://dr-cos.info/en/> <http://dr-cos.com/>
MAIL info@dr-cos.com
Twitter <https://twitter.com/dr-cos>
facebook <https://www.facebook.com/drcoscom>

DRCOS
SITE <http://dr-cos.info/en/> <http://dr-cos.com/>
MAIL info@dr-cos.com
Twitter <https://twitter.com/dr-cos>
facebook <https://www.facebook.com/drcoscom>

Bonding line AB

larjacket3
Lining Fabric
sheets



Seam allowance 1/2in.

Children's ^{size} 4

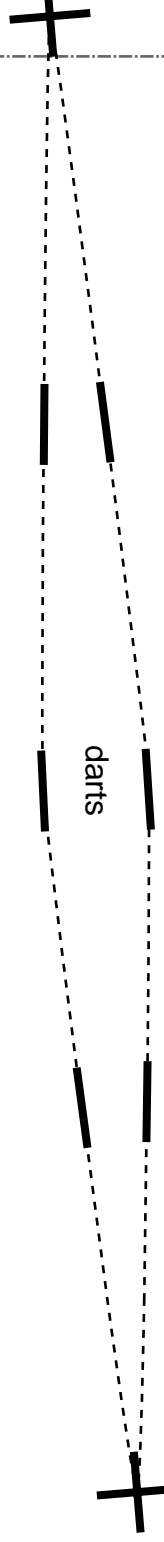
Tailorcollarjacket3
Front Body Facing
two sheets

Bonding line AB

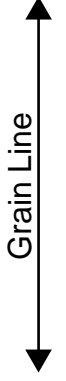
Bonding line AC

Seam allowance 1/2in.

Children



darts

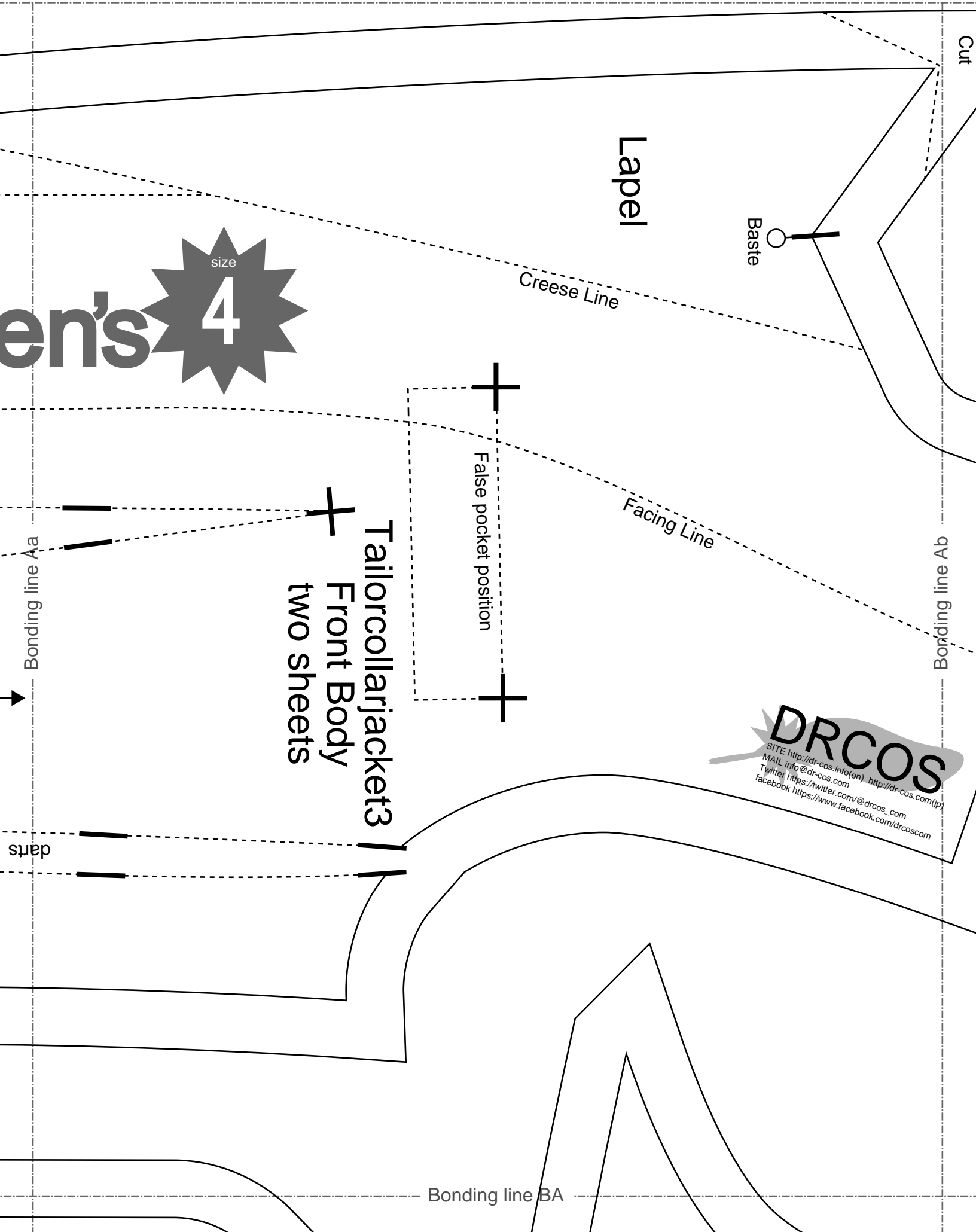


Grain Line

Bonding line Ca

Tailorcollarja
Front Body Linir
two shee

Men's **4** size



Tailorcollarjackets3
Front Body
two sheets

DRCOS
SITE <http://dr-cos.info/en> <http://dr-cos.com/jp/>
MAIL info@dr-cos.com
Twitter [@drcos_com](https://twitter.com/@drcos_com)
facebook <https://www.facebook.com/drcoscom>

Cut

Bonding line Ab

Bonding line BA

Bonding line Aa

darts

Lapel

Baste

Creese Line

Facing Line

False pocket position

Bonding line BA

DRCOS
SITE <http://dr-cos.info/en> <http://dr-cos.com>
MAIL info@dr-cos.com
Twitter https://twitter.com/drcos_com
facebook <https://www.facebook.com/drcoscom>

DRCOS

SITE <http://dr-cos.info/en> <http://dr-cos.com/jp>
MAIL info@dr-cos.com
Twitter https://twitter.com/drcos_com
facebook <https://www.facebook.com/drcoscom>



Tailorcollarjacket3
sleeve
two sheets

Bonding line Bb

Seam allowance 1/2in.



DRCOS
SITE <http://dr-cos.info/en> <http://dr-cos.com/jp>
MAIL info@dr-cos.com
Twitter https://twitter.com/drcos_com
facebook <https://www.facebook.com/drcoscom>

Bonding line BB

Men's **4** size

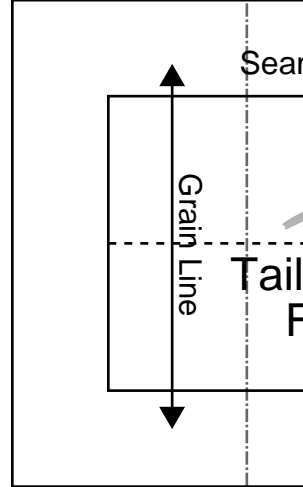


darts

Bonding line Ca

Bonding line BB

Bonding line BC



Bonding line Cb

Cut

darts

DRCOS

SITE <http://dr-cos.info/en> <http://dr-cos.com/jp>
MAIL info@dr-cos.com
Twitter https://twitter.com/drcos_com
facebook <https://www.facebook.com/drcoscom>

Bonding line Ab

Bonding line Ac

S
s.com(jp)
scom

Children's



size

4

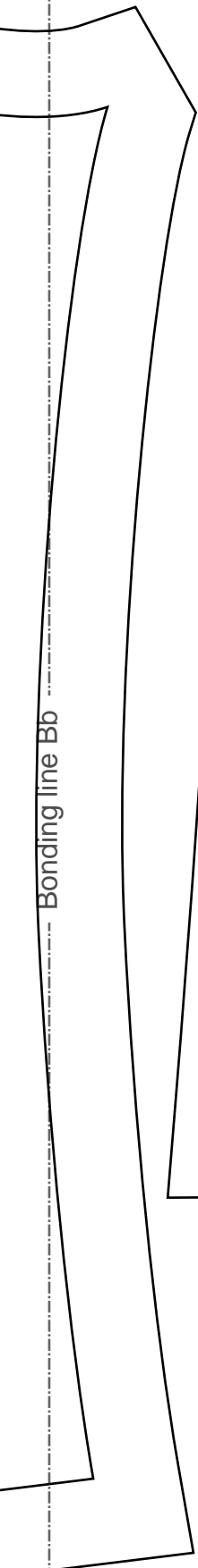
Tailorcollarjacket3
Back Body Side
two sheets

Seam allowance 1/2in.

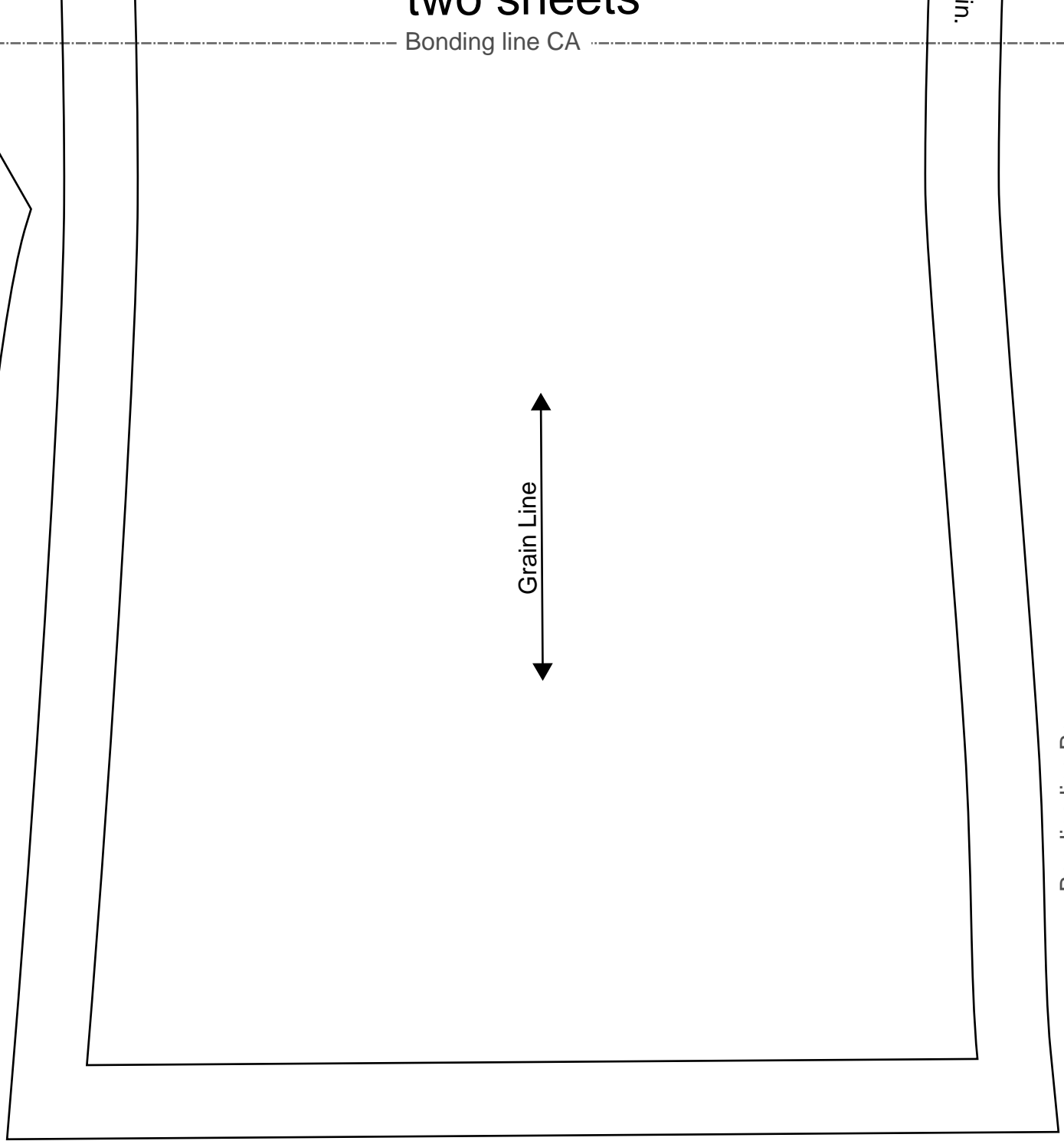
Bonding line CA

two sheets
Bonding line CA

1/2 in.



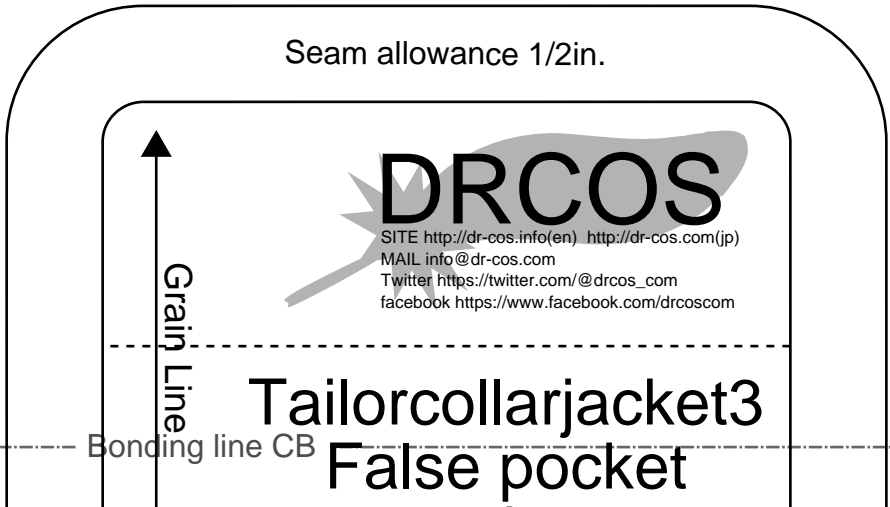
Bonding line Bb



Grain Line

Bonding line Bc

Seam allowance 1/2in.



Grain Line



Tailorcollarjacket3
False pocket

Bonding line CB

Seam allowance 1/2in.

DRCOS

SITE [http://dr-cos.info\(en\)](http://dr-cos.info(en)) [http://dr-cos.com\(jp\)](http://dr-cos.com(jp))
MAIL info@dr-cos.com
Twitter https://twitter.com/@drcos_com
facebook <https://www.facebook.com/drcoscom>

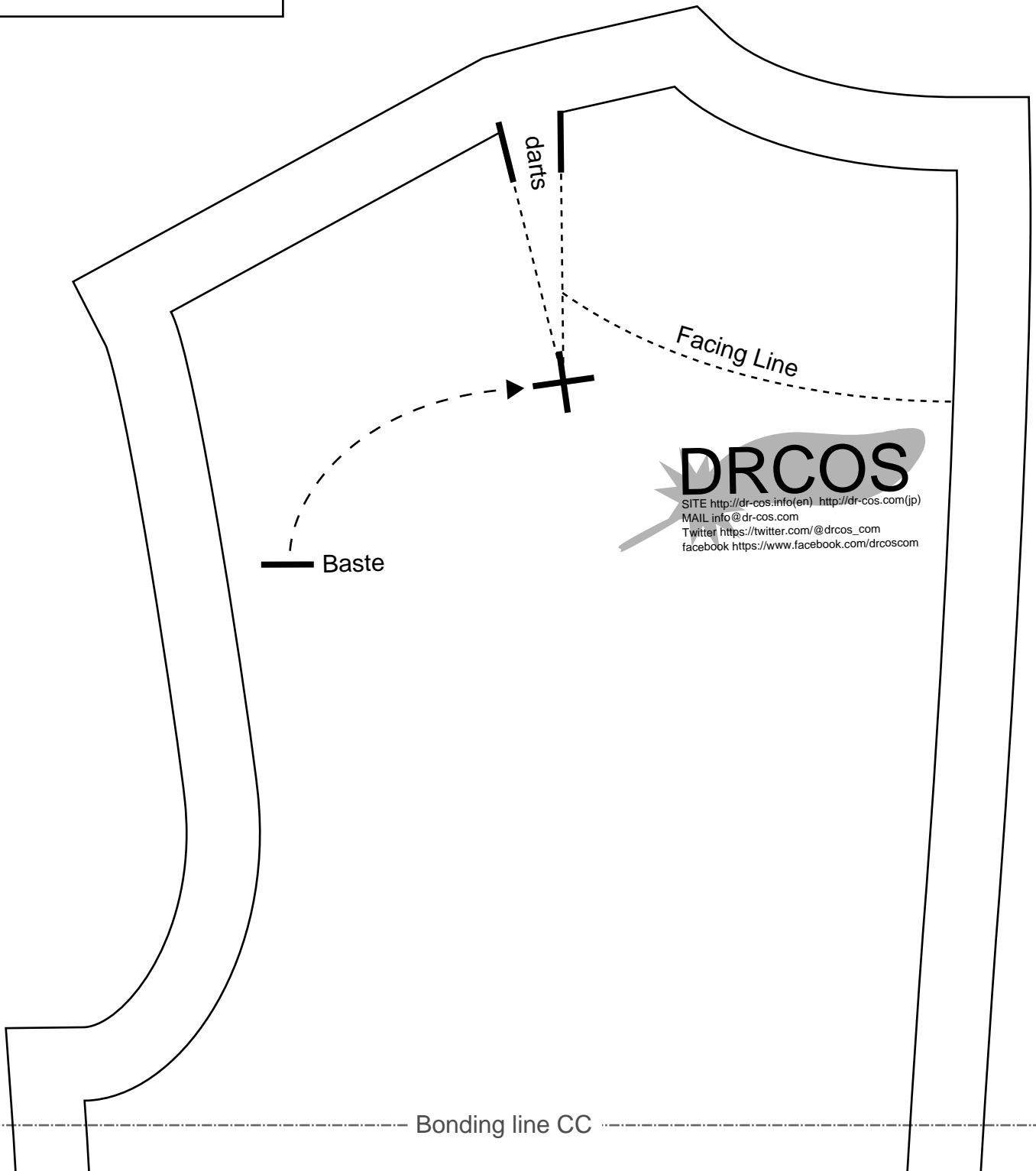
Tailorcollarjacket3
False pocket
one sheets

Bonding line CB

Tailorcollarjacket3
False pocket
two sheets



Bonding line Cb



Bonding line Cc

Bonding line CC

Bonding line CC

Children's



Tailorcollarjacket3
Back Body
two sheets

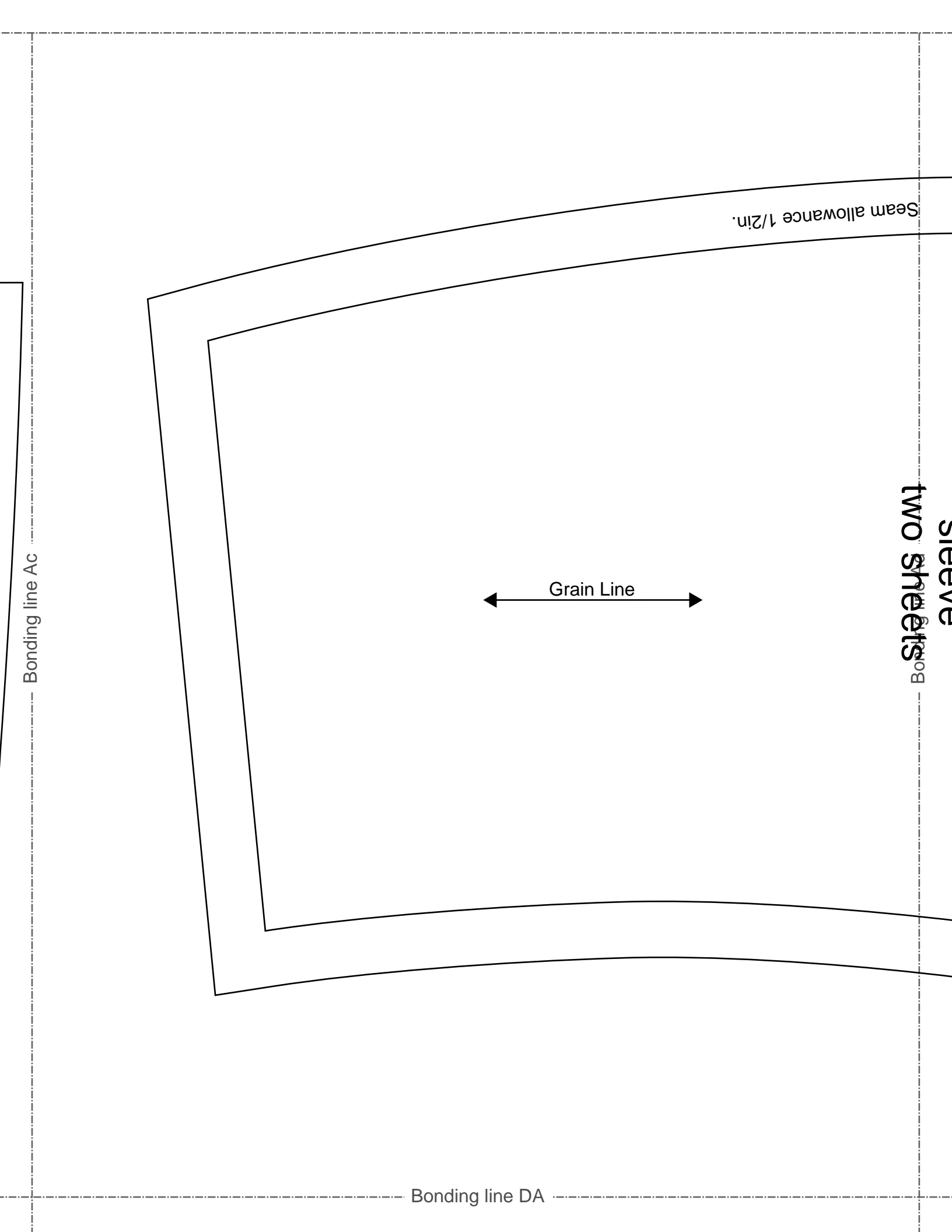
Seam allowance 1/2in.



Bonding line Db

Bonding line Dc

Bonding line CD



Bonding line Ac

Bonding line DA

Grain Line

Seam allowance 1/2 in.

sieve and sheets
two sheets

shirring sewing



Children's **4** size

Tailorcollarjackets3
sleeve

two sheets