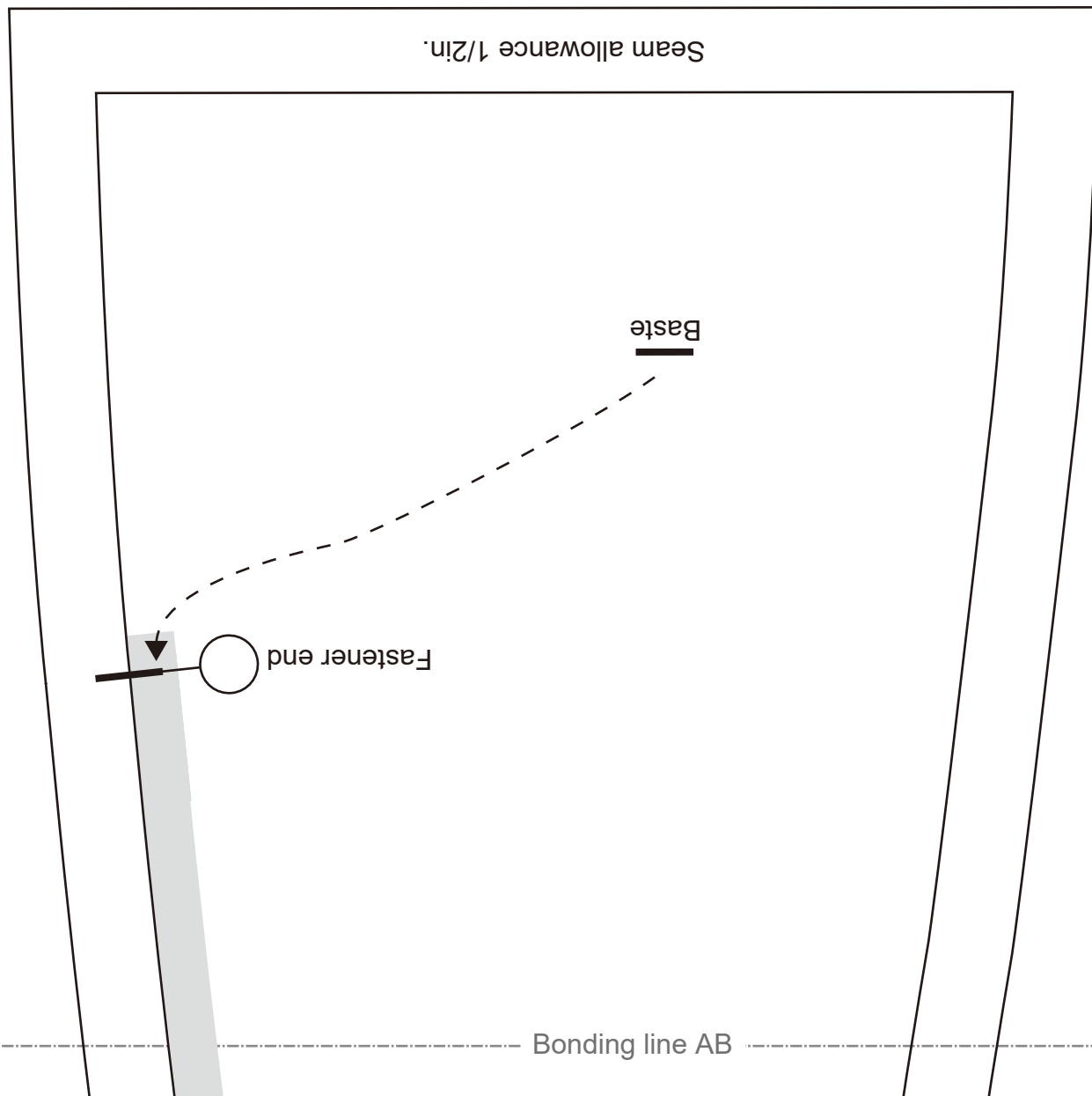
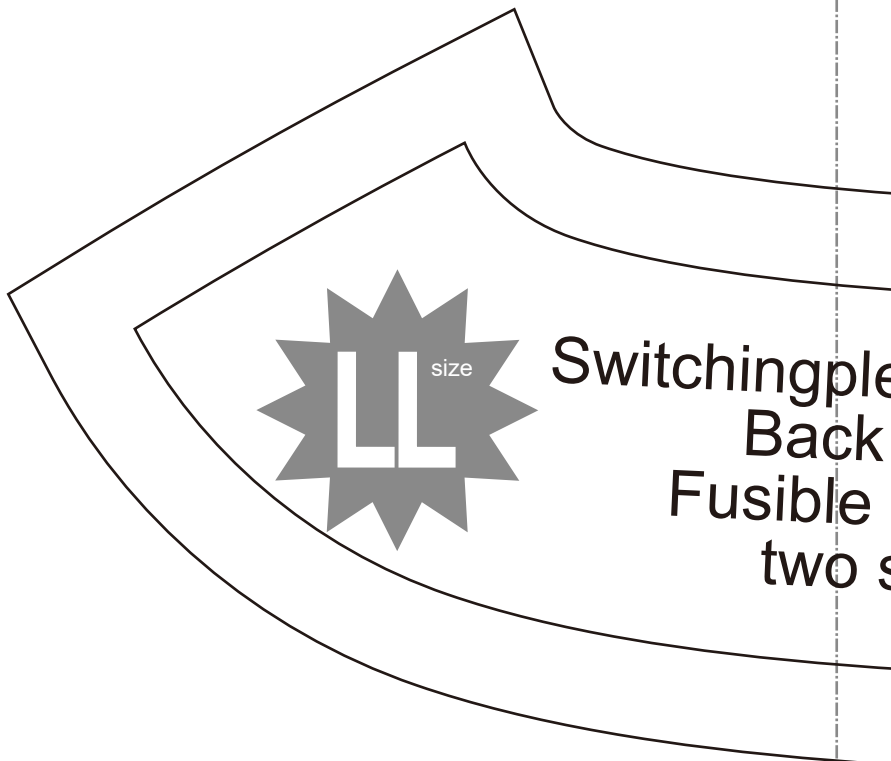


Bonding line AA



Bonding line AB

Bonding line Ca



Switching pleated done piece  
Back Body  
two sheets

LADIES

# LADIES'



Fusible Stay tape

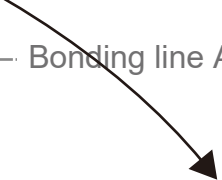
Facing line

**DRCOS**  
SITE <https://drcos.info/en> <https://drcos.com/jp>  
MAIL [info@drcos.com](mailto:info@drcos.com)  
Twitter [https://twitter.com/drcos\\_com](https://twitter.com/drcos_com)  
Pinterest <https://www.pinterest.jp/drcosinfo>

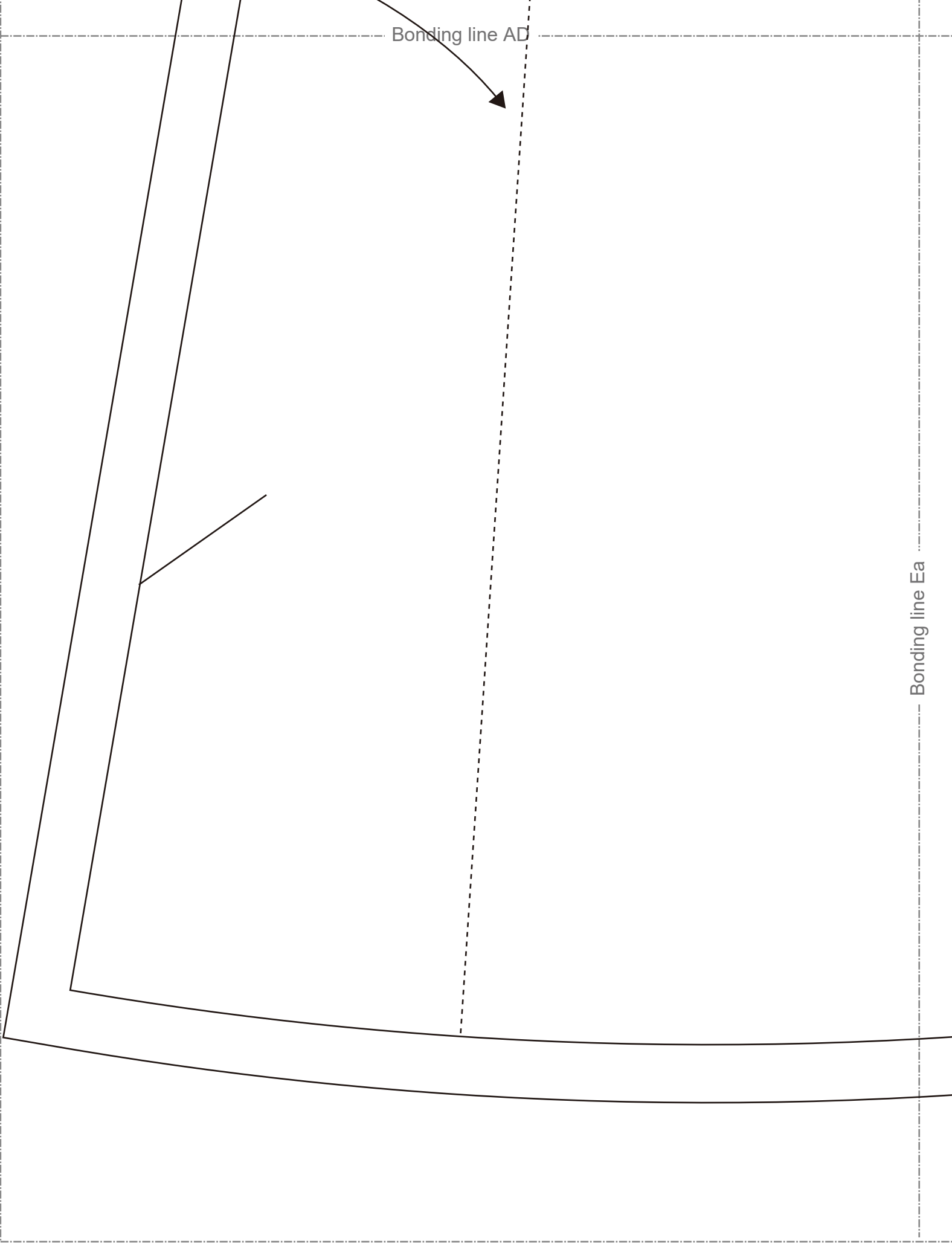
Bonding line Da

Bonding line AD

Bonding line AD



Bonding line Ea



Bonding line BA

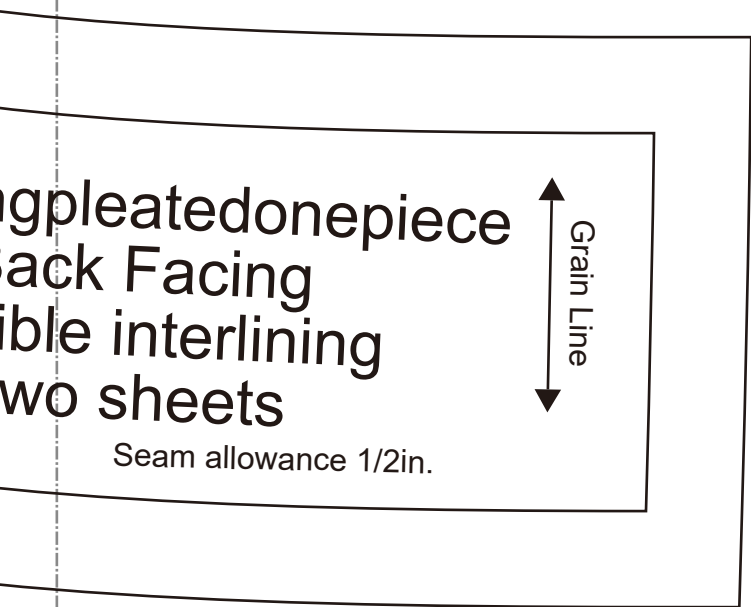
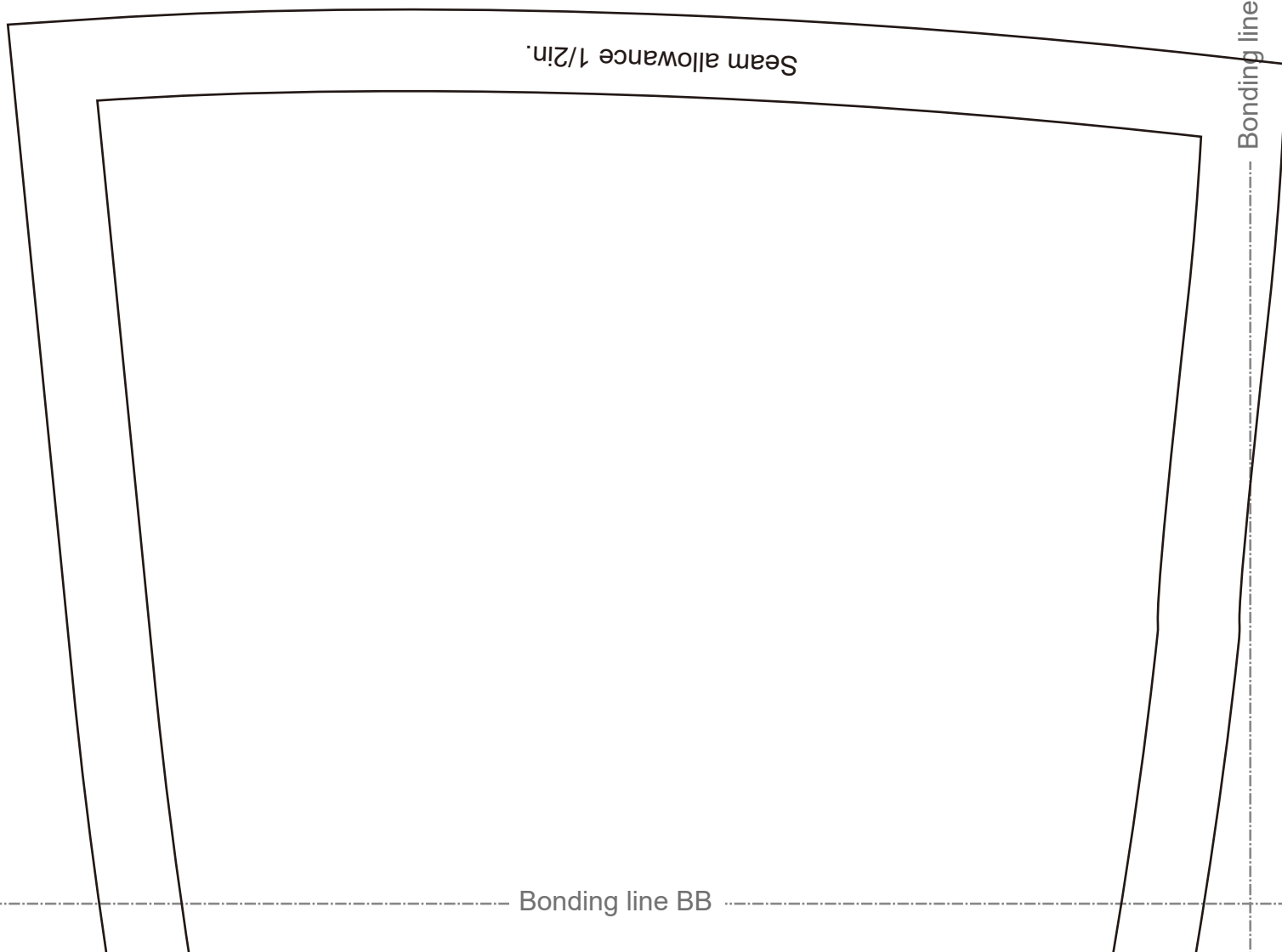


Diagram showing a pleated one-piece back facing with interlining and seam allowance. The diagram includes a vertical double-headed arrow labeled "Grain Line" and the text "Seam allowance 1/2in.".

Seam allowance 1/2in.

Grain Line

Bonding line Ba



Seam allowance 1/2in.

Bonding line Bb

Bonding line BB

Bonding line BB



Switching pleated done piece  
Front Body (side)  
two sheets

LADIES'



Bonding line Ca

Bonding line Cb

Bonding line BC

DR-COS  
SITE <https://dr-cos.info/en> [https://dr-cos.com\(dp\)](https://dr-cos.com(dp))  
MAIL [info@dr-cos.com](mailto:info@dr-cos.com)  
Twitter [https://twitter.com/dr-cos\\_com](https://twitter.com/dr-cos_com)  
Pinterest <https://www.pinterest.jp/dr-cos/info>

Bonding line BC

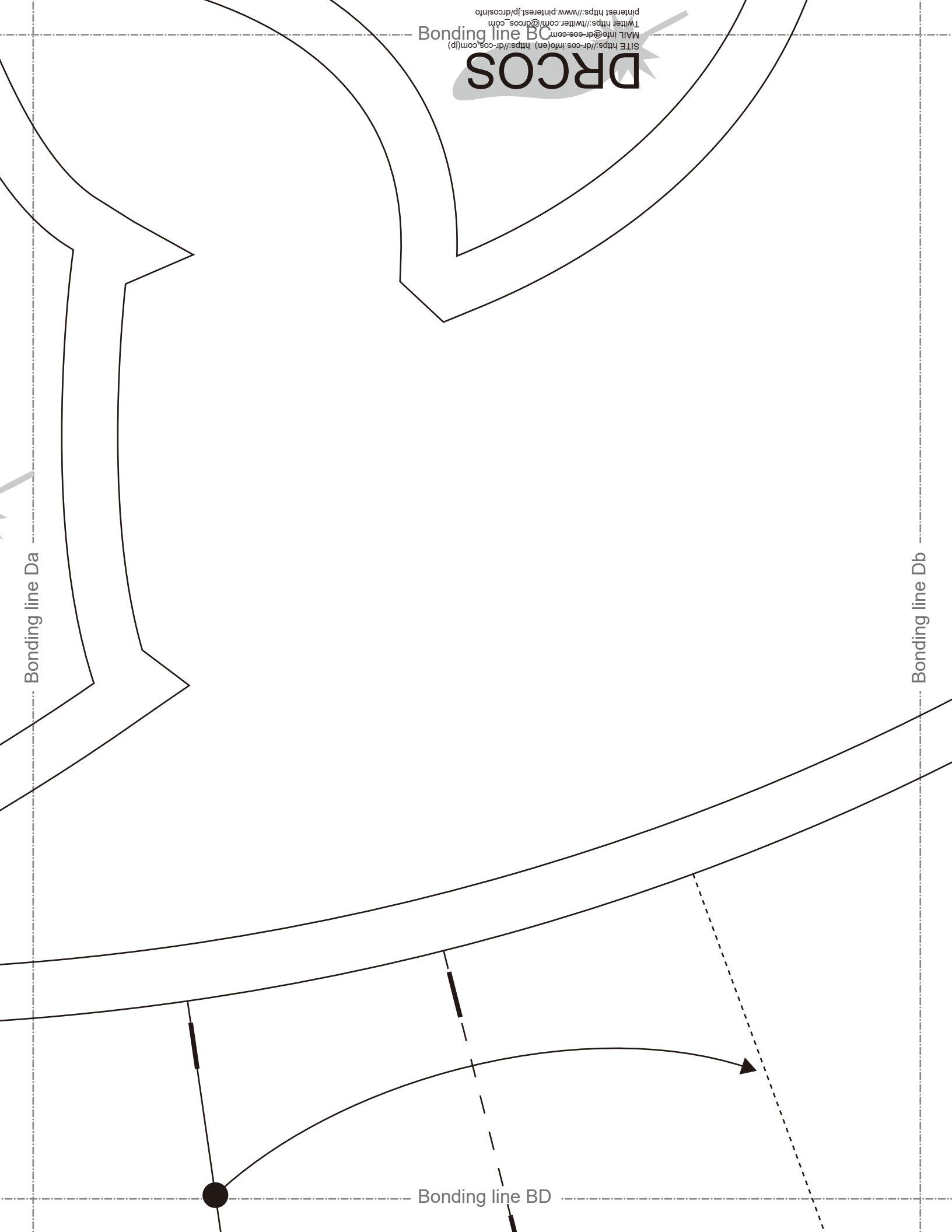
**DRCOS**

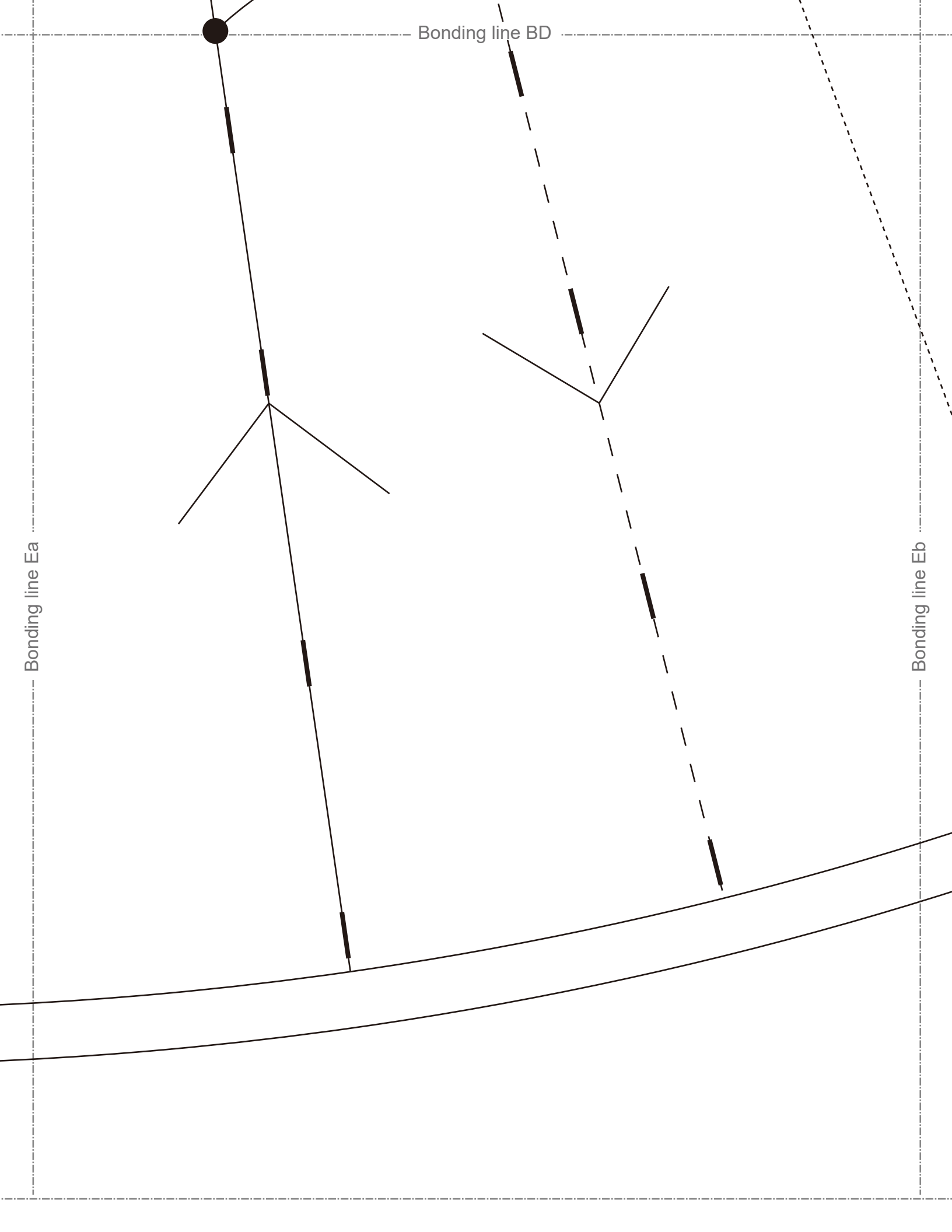
SITE <https://dr-cos.info/> <https://dr-cos.com.jp/>  
MAIL [info@dr-cos.com](mailto:info@dr-cos.com)  
Twitter [https://twitter.com/dr-cos\\_com](https://twitter.com/dr-cos_com)  
Pinterest <https://www.pinterest.jp/dr-cosinfo>

Bonding line Da

Bonding line Db

Bonding line BD



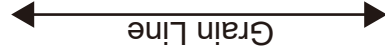




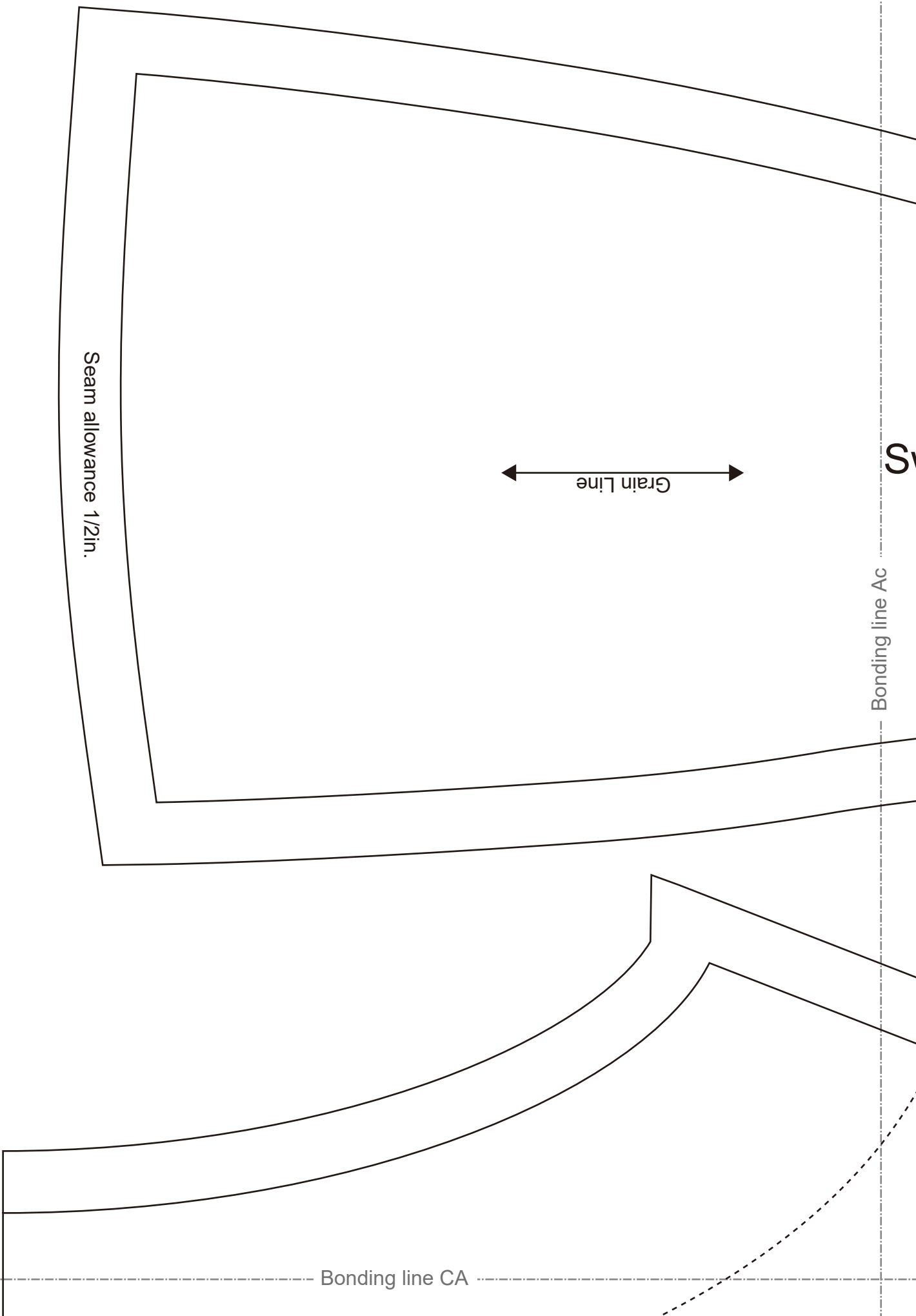
Bonding line Ab

Bonding line Ac

Seam allowance 1/2in.



Bonding line CA



Bonding line CA

**DRCOS**

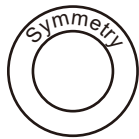
SITE [https://dr-cos.info\(en\)](https://dr-cos.info(en)) [https://dr-cos.com\(jp\)](https://dr-cos.com(jp))  
MAIL [info@dr-cos.com](mailto:info@dr-cos.com)  
Twitter [@drcos\\_com](https://twitter.com/@drcos_com)  
pinterest <https://www.pinterest.jp/drcosinfo>

Facing line



# LADIES'

Switchingpleatedonepiece



Front Body  
one sheets



Bonding line CB

Bonding line Bb

Bonding line Bc

Bonding line CB

Bonding line Cb

Bonding line Cc



Grain Line

Bonding line CC

Seam allowance 1/2in

1/4"

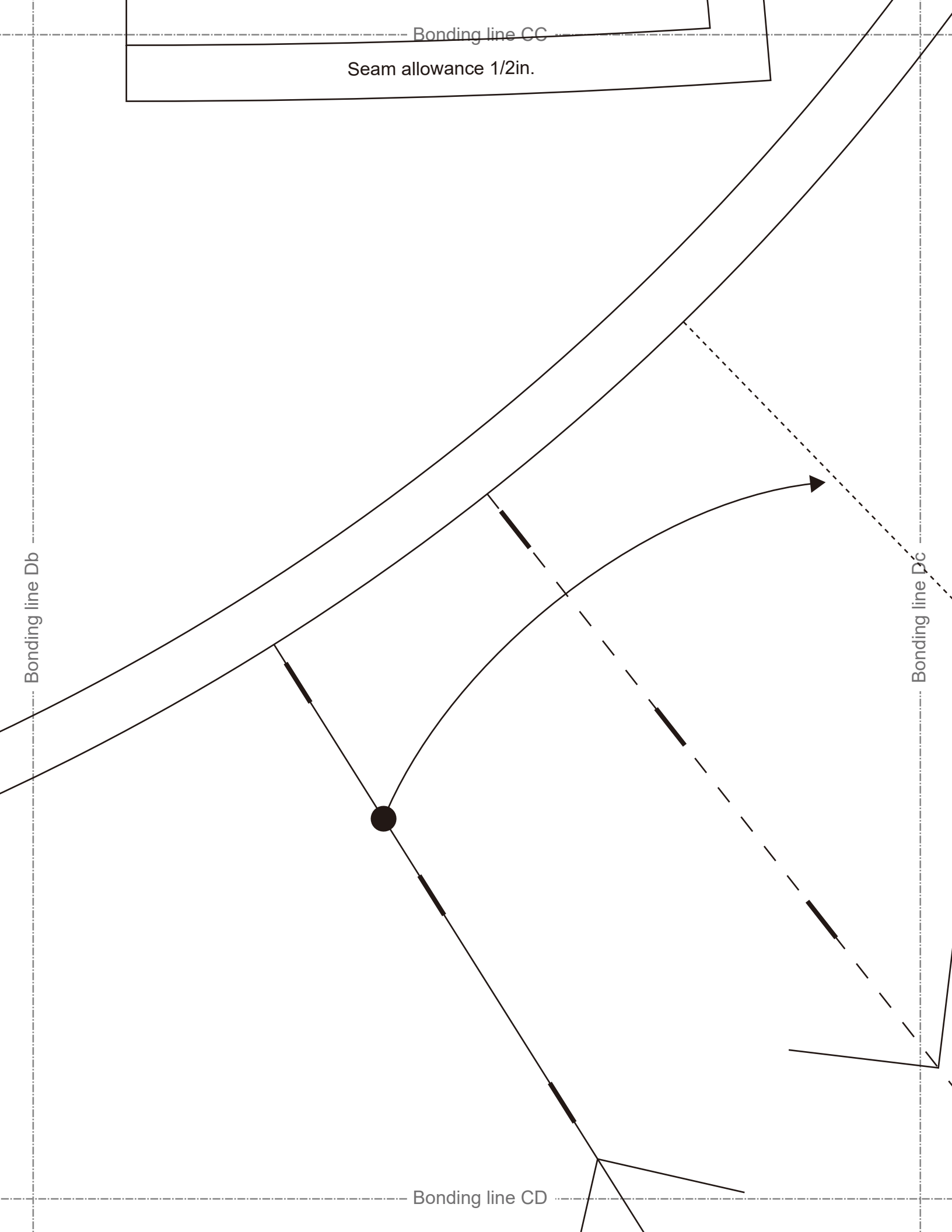
Bonding line CC

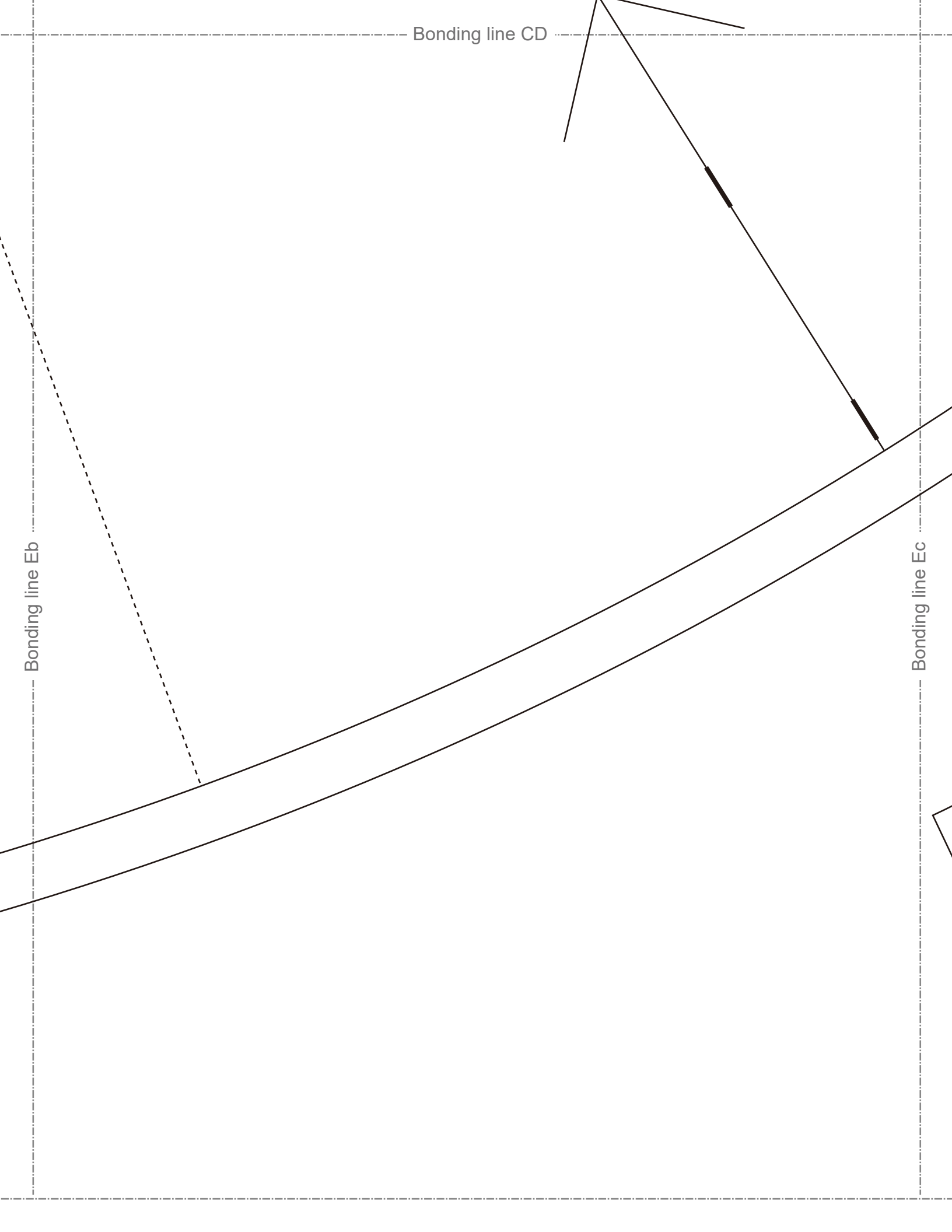
Seam allowance 1/2in.

Bonding line Db

Bonding line Dc

Bonding line CD





Switching pleated one piece  
Back Body(side)  
two sheets

LADIES'



Bonding line Ac

Bonding line Ad

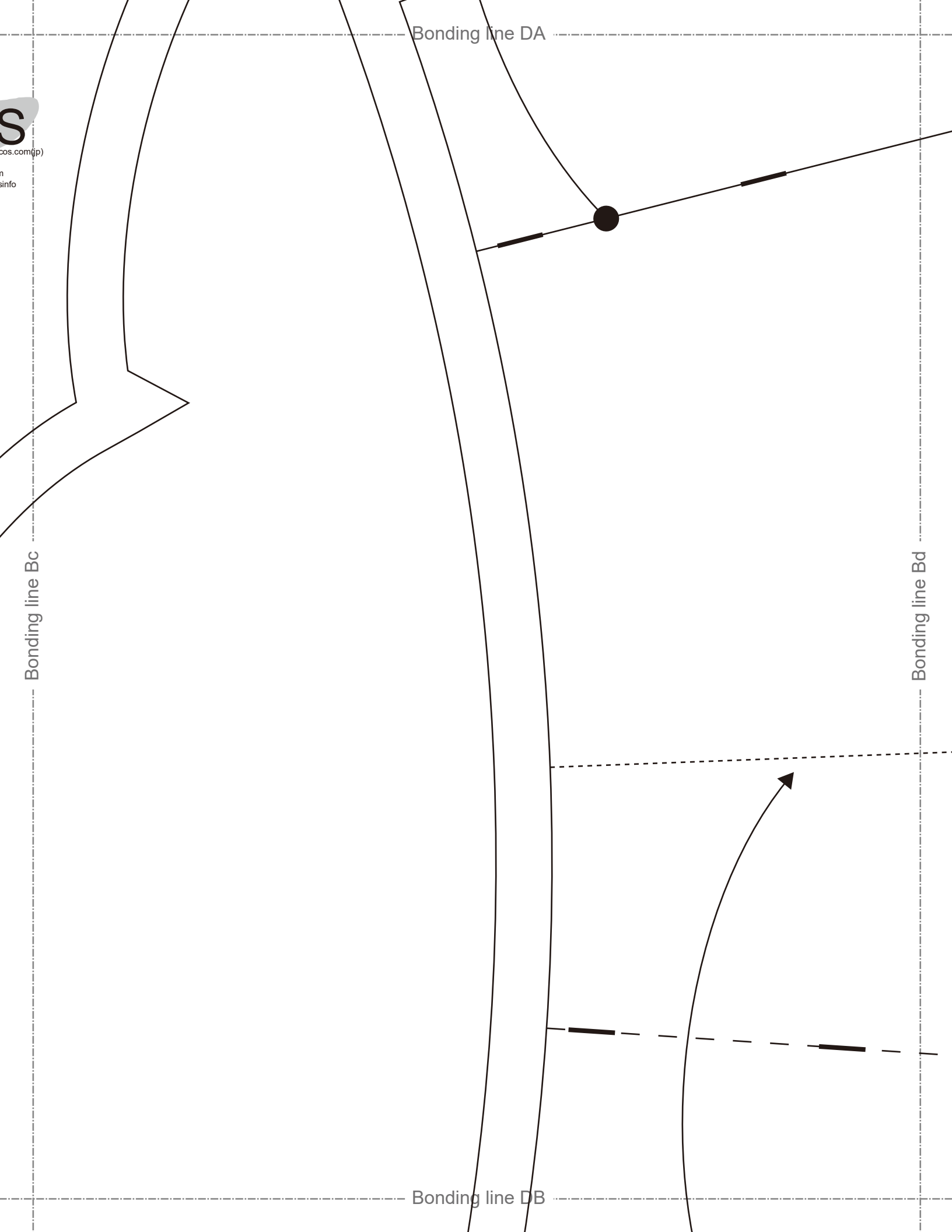
Bonding line DA

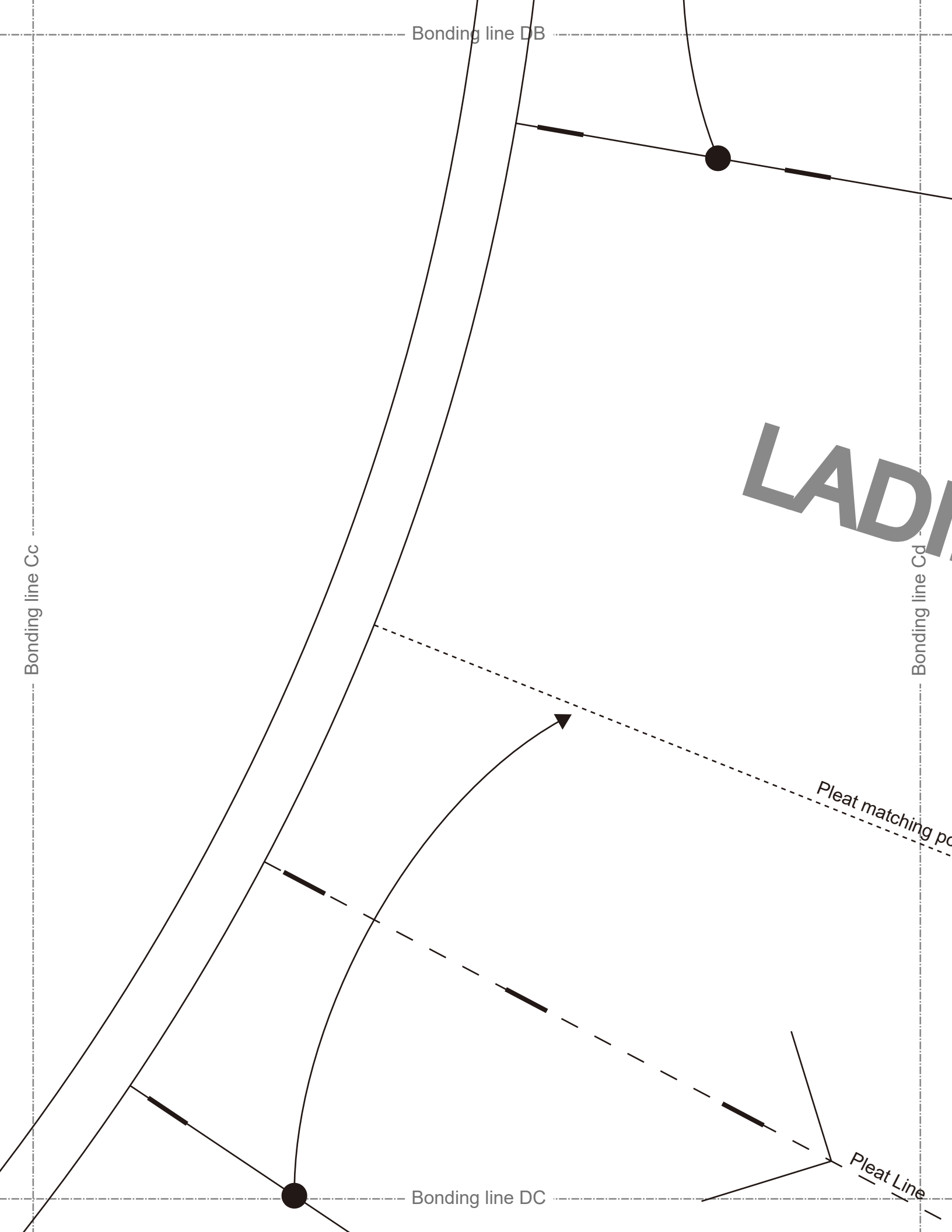
Bonding line DA

Bonding line Bc

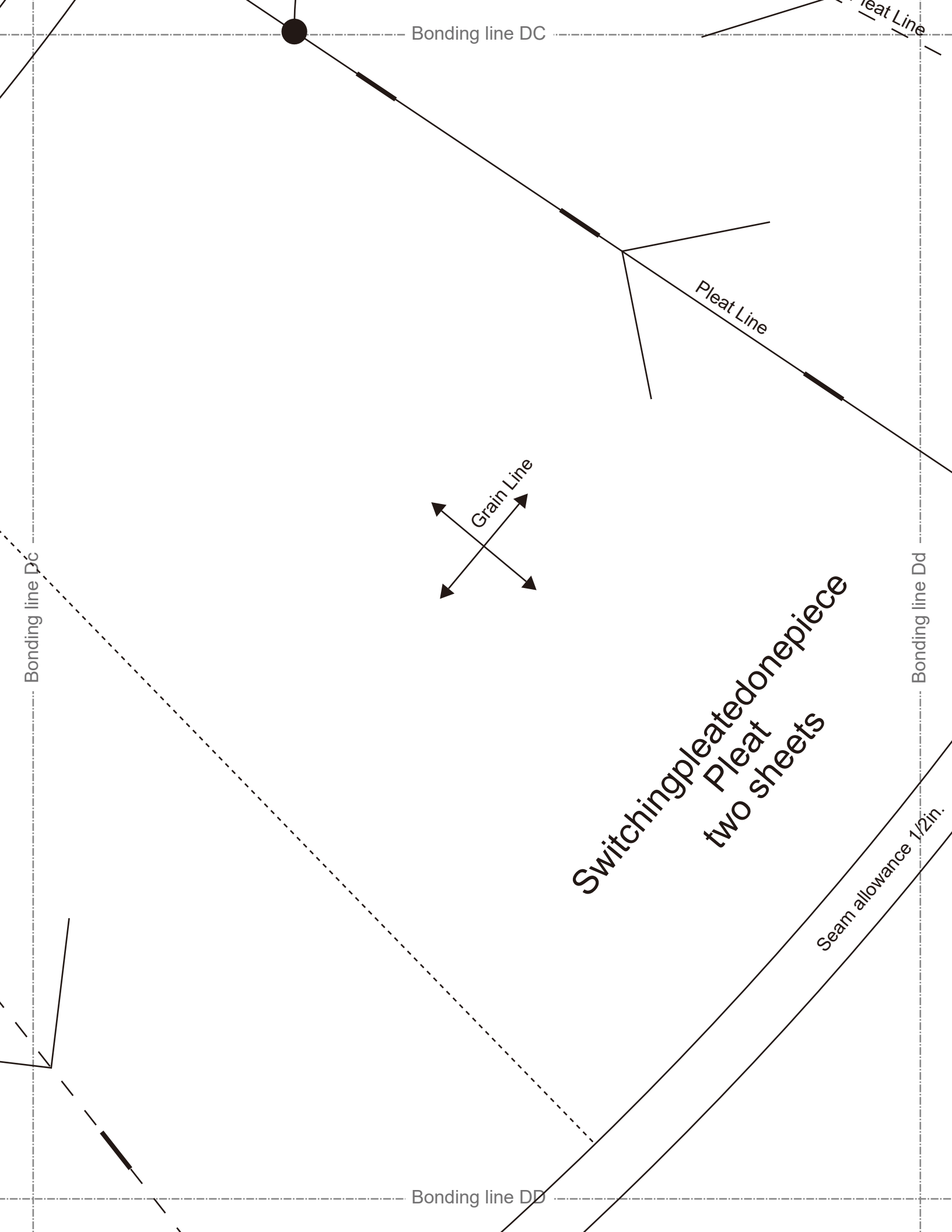
Bonding line Bd

Bonding line DB







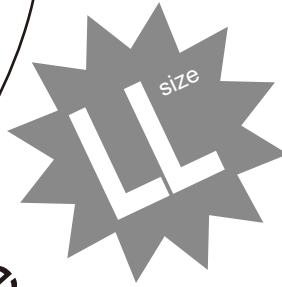


Bonding line DD

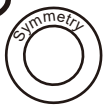
Bonding line Ec

Bonding line Ed

Seam allowance 1/2in.



Switchingpleatedonepiece  
Front Facing  
Fusible interlining  
one sheets



Bonding line Ad

SITE <https://drcos.info/en> <https://drcos.com/jp>  
MAIL [info@drcos.com](mailto:info@drcos.com)  
TWITTER <https://twitter.com/drcos.com>  
PINTEREST <https://www.pinterest.jp/drcosinfo>

**DRCOS**

Bonding line EA

Bonding line Ae

Bonding line Bd

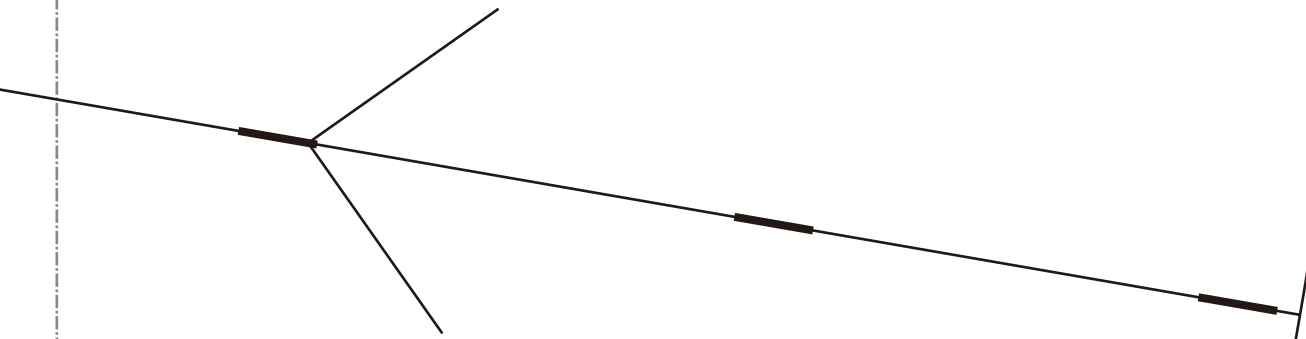
Bonding line EA

Bonding line EB

Bonding line Be



Bonding line EB



**DIES'LL** size

Bonding line Cd

Bonding line Ce

atching position

t Line

Bonding line EC

Line

Bonding line EC

DR  
SITE <https://dr->  
MAIL [info@dr-](mailto:info@dr-)  
Twitter <https://tv>  
pinterest <https://>

Bonding line Dd

Bonding line De

ance 1/2in.

Front

LADI

Switchingpl  
S  
two

Bonding line ED

Bonding line ED

Bonding line Ed

Bonding line Ee

Sean

Bonding line FC

**DRCOS**

SITE [https://dr-cos.info\(en\)](https://dr-cos.info(en)) [https://dr-cos.com\(jp\)](https://dr-cos.com(jp))  
MAIL [info@dr-cos.com](mailto:info@dr-cos.com)  
Twitter [https://twitter.com/drcos\\_com](https://twitter.com/drcos_com)  
pinterest <https://www.pinterest.jp/drcosinfo>

Bonding line De

Back

**DIES'LL** size

ngpleatedonepiece  
Sleeve  
two sheets

Bonding line FD



Bonding line FD

Bonding line Ee



Grain Line

Seam allowance 1/2in.