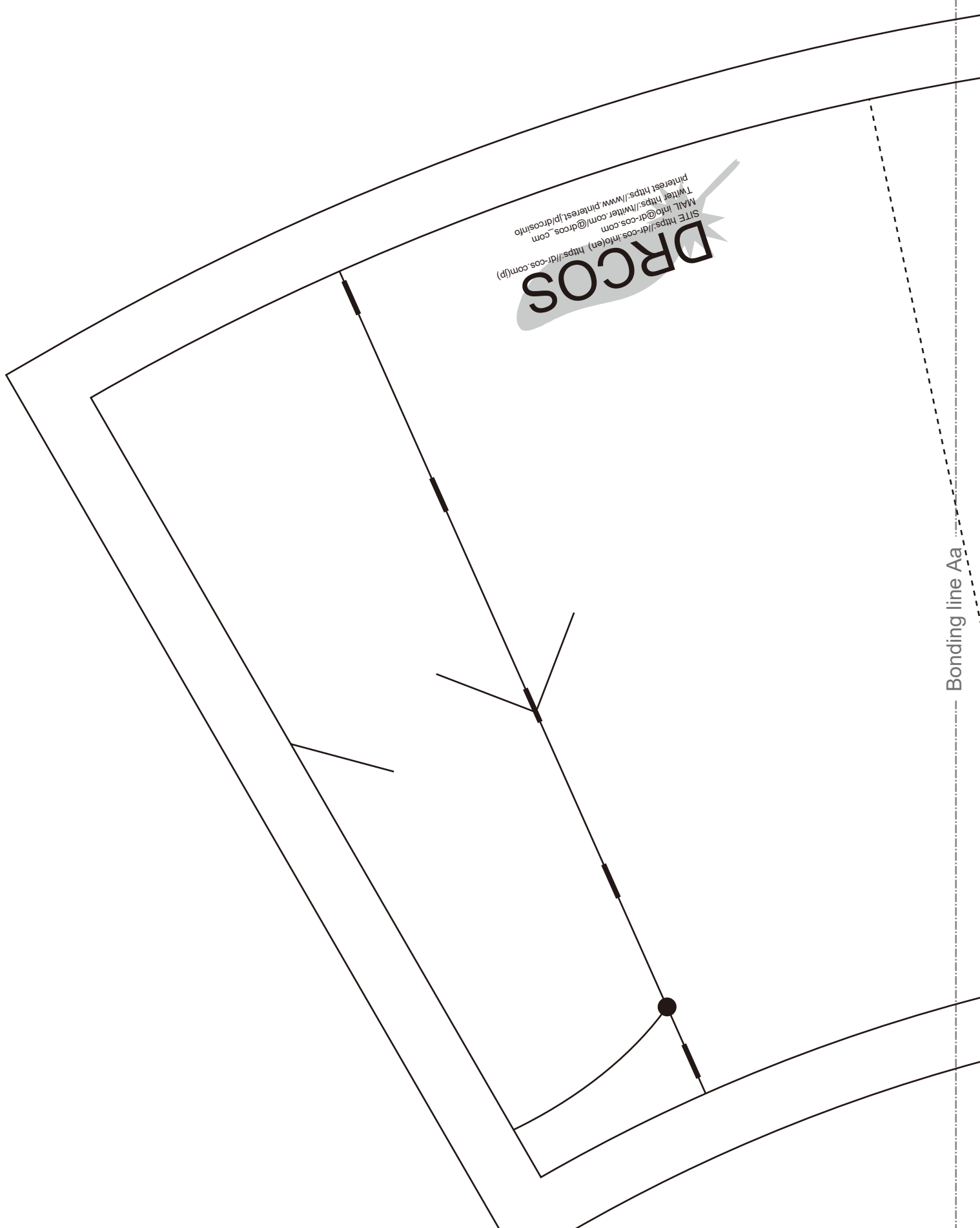


**DRCOS**  
SITE <https://drcos.info/en> <https://drcos.com/p/>  
MAIL [info@drcos.com](mailto:info@drcos.com) [https://twitter.com/drcos\\_com](https://twitter.com/drcos_com)  
T <https://www.pinterest.jp/drcosinfo>  
Pinterest <https://www.pinterest.jp/drcosinfo>



Bonding line Aa

Bonding line Aa

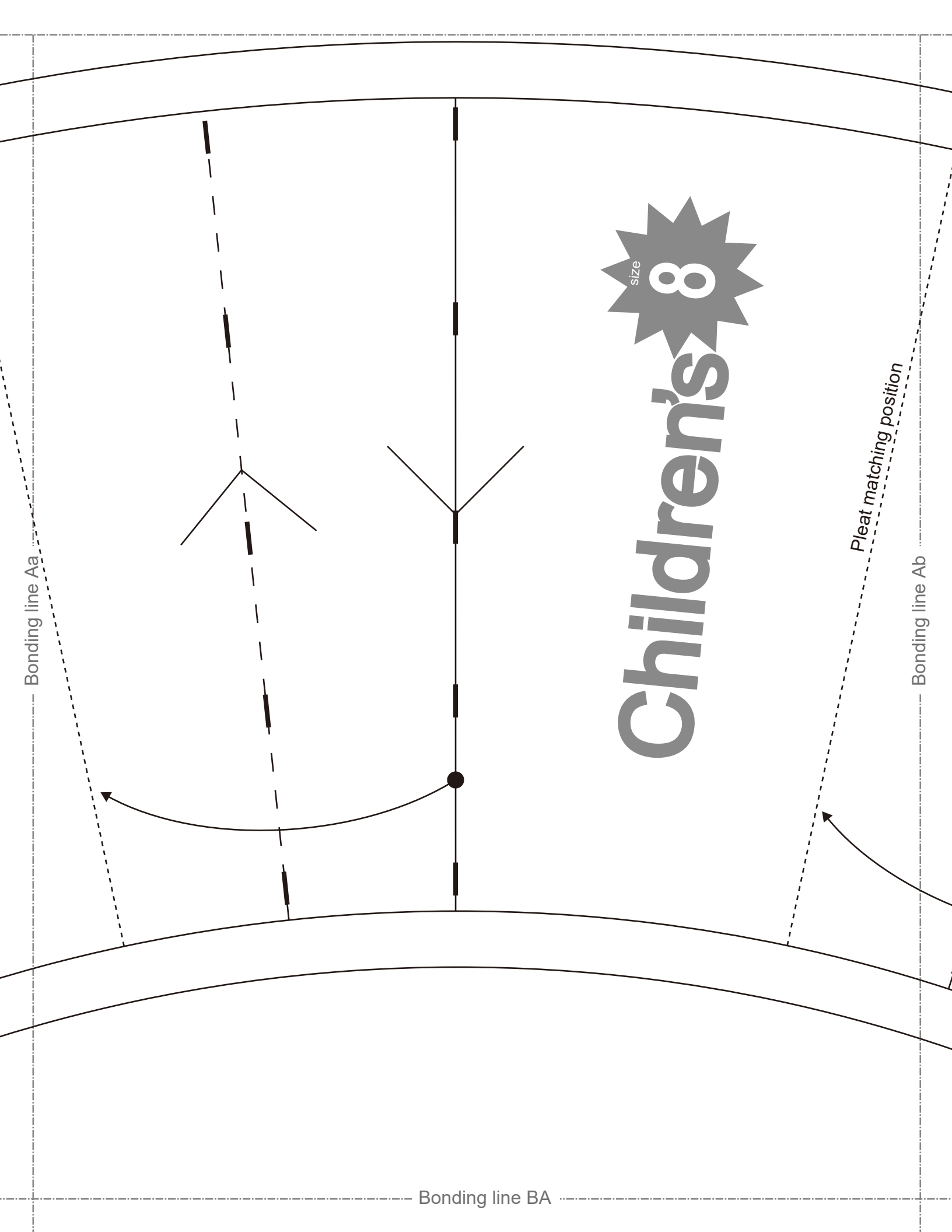
Bonding line Aa

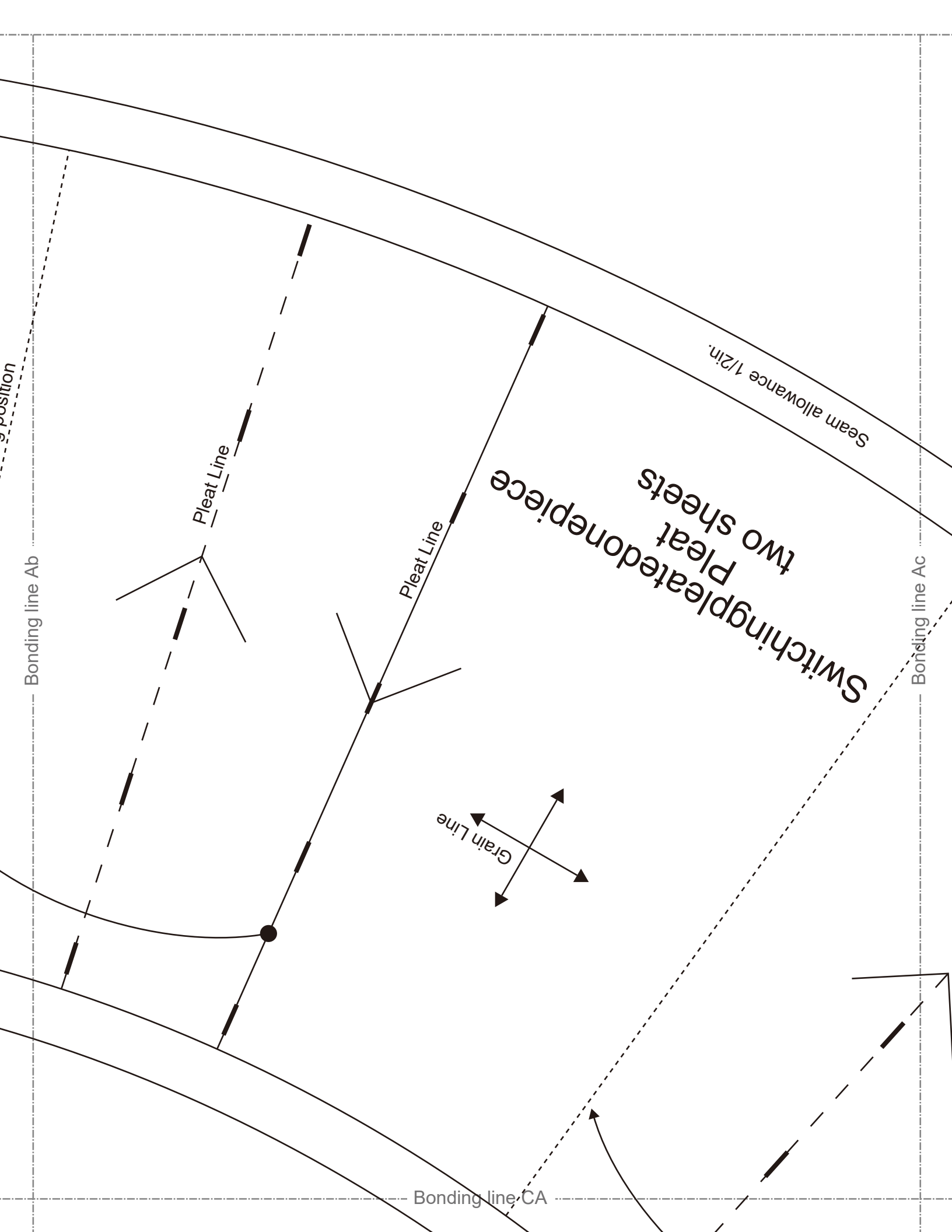
# Children's <sup>size</sup> 8

Pleat matching position

Bonding line Ab

Bonding line BA





Bonding line CA

Bonding line Bb

Bonding line Bc

Bonding line CB

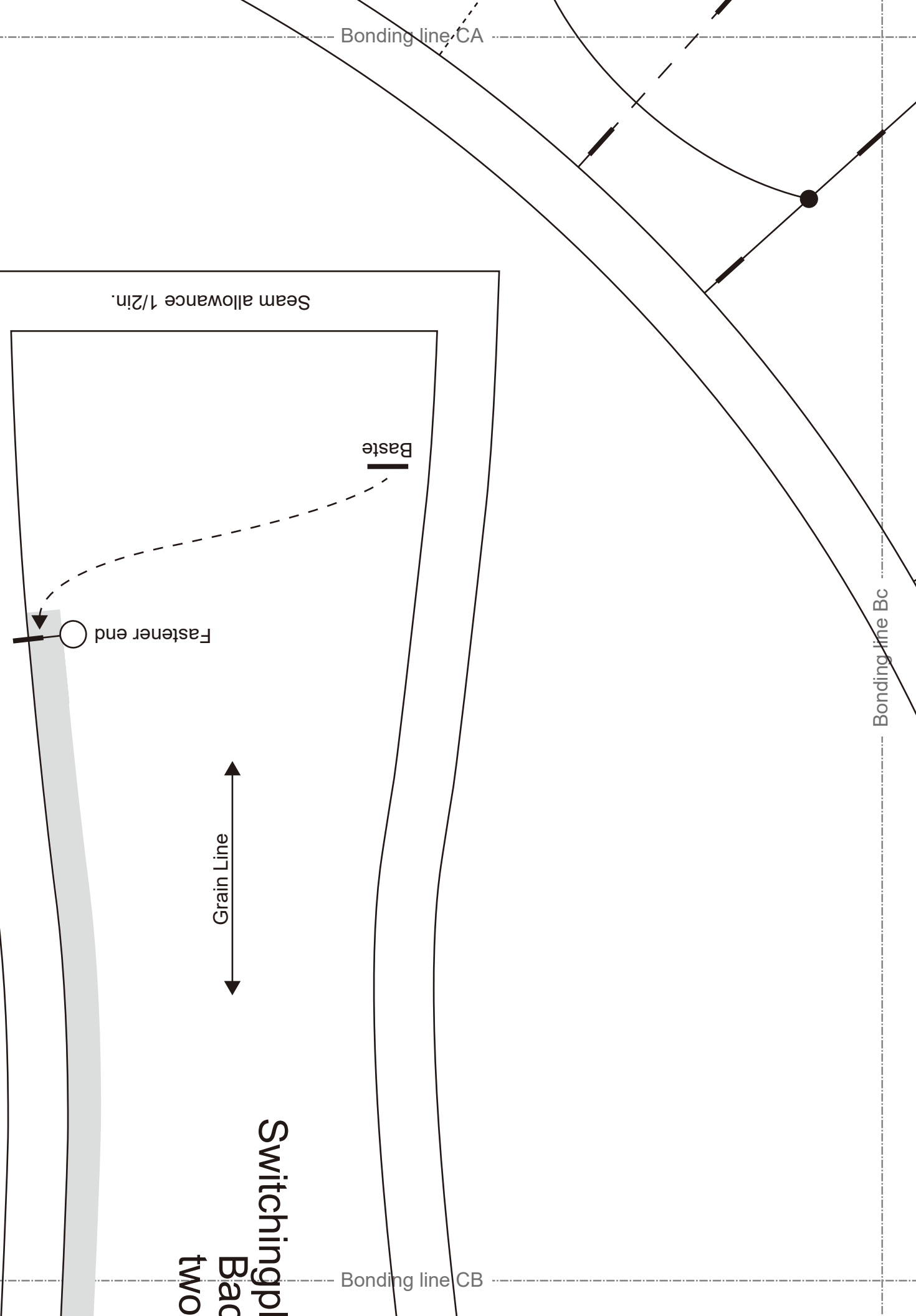
Seam allowance 1/2in.

Baste

Fastener end

Grain Line

Switching pl  
Back  
two



Single pleated one piece  
Back Body  
two sheets

Bonding line CB

Children's



**DRCOS**  
SITE <https://dr-cos.info/en> <https://dr-cos.com/jp>  
MAIL [info@dr-cos.com](mailto:info@dr-cos.com)  
Twitter <https://twitter.com/dr-cos>  
Pinterest <https://www.pinterest.jp/dr-cos/info>

Fusible Stay tape

Facing line

Bonding line Cb

Bonding line Cc

Bonding line CC

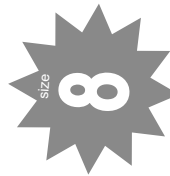
Bonding line Ac

Bonding line Ad

Bonding line DA

**DRCOS**

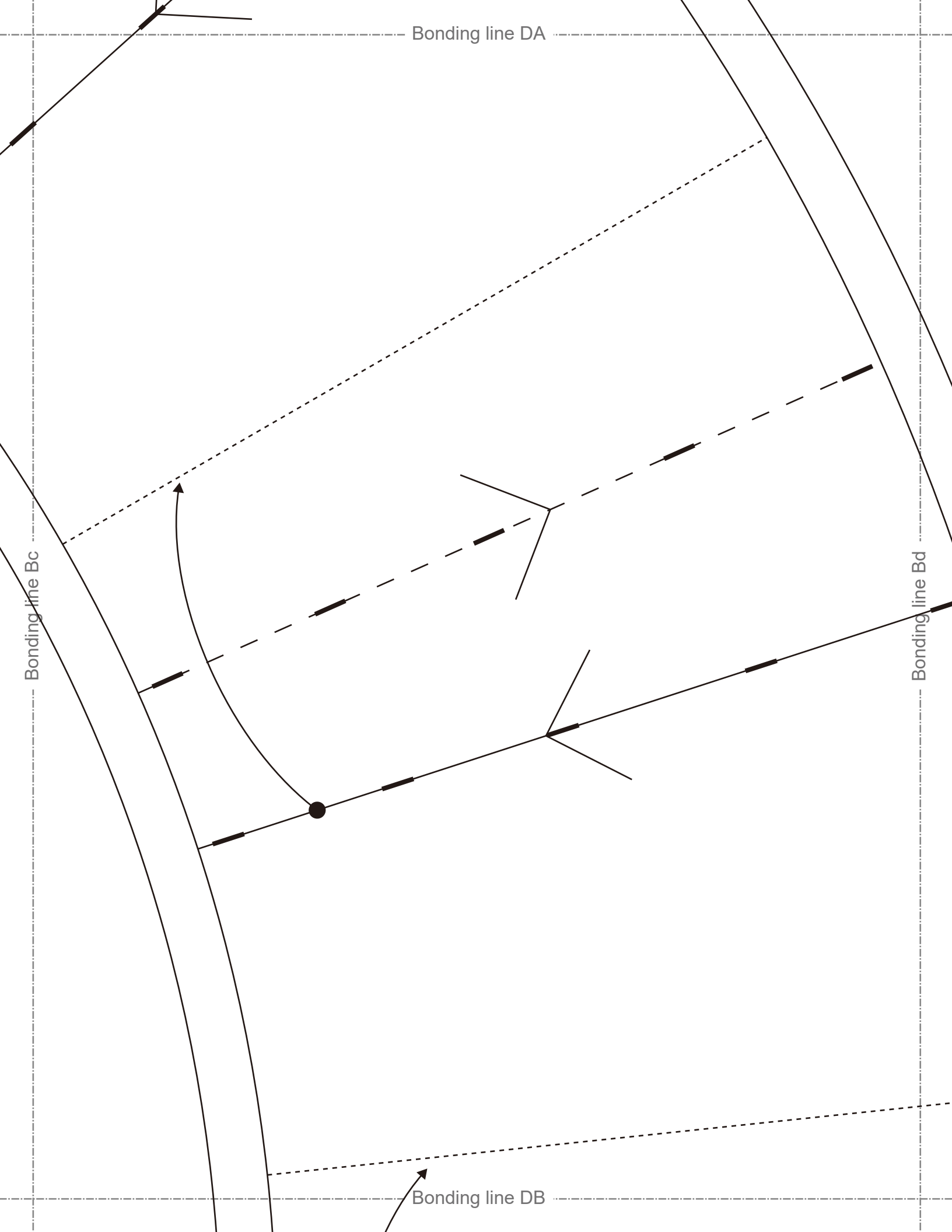
SITE <https://drcos.info/en> <https://drcos.com/jp>  
MAIL [info@drcos.com](mailto:info@drcos.com)  
Twitter [https://twitter.com/drcos\\_com](https://twitter.com/drcos_com)  
Pinterest <https://www.pinterest.jp/drcosinfo>



**Children's**

piece





Bonding line DB

Bonding line Cc

Bonding line Cd

Facing line

**DRCOS**

SITE [https://dr-cos.info\(en\)](https://dr-cos.info(en)) [https://dr-cos.com\(jp\)](https://dr-cos.com(jp))  
MAIL [info@dr-cos.com](mailto:info@dr-cos.com)  
Twitter [@drcos\\_com](https://twitter.com/@drcos_com)  
pinterest <https://www.pinterest.jp/drcosinfo>



**Children's**

Front

iece

Bonding line DC



Bonding line Dc

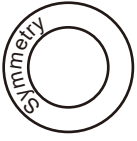
Bonding line DC

Bonding line Dd

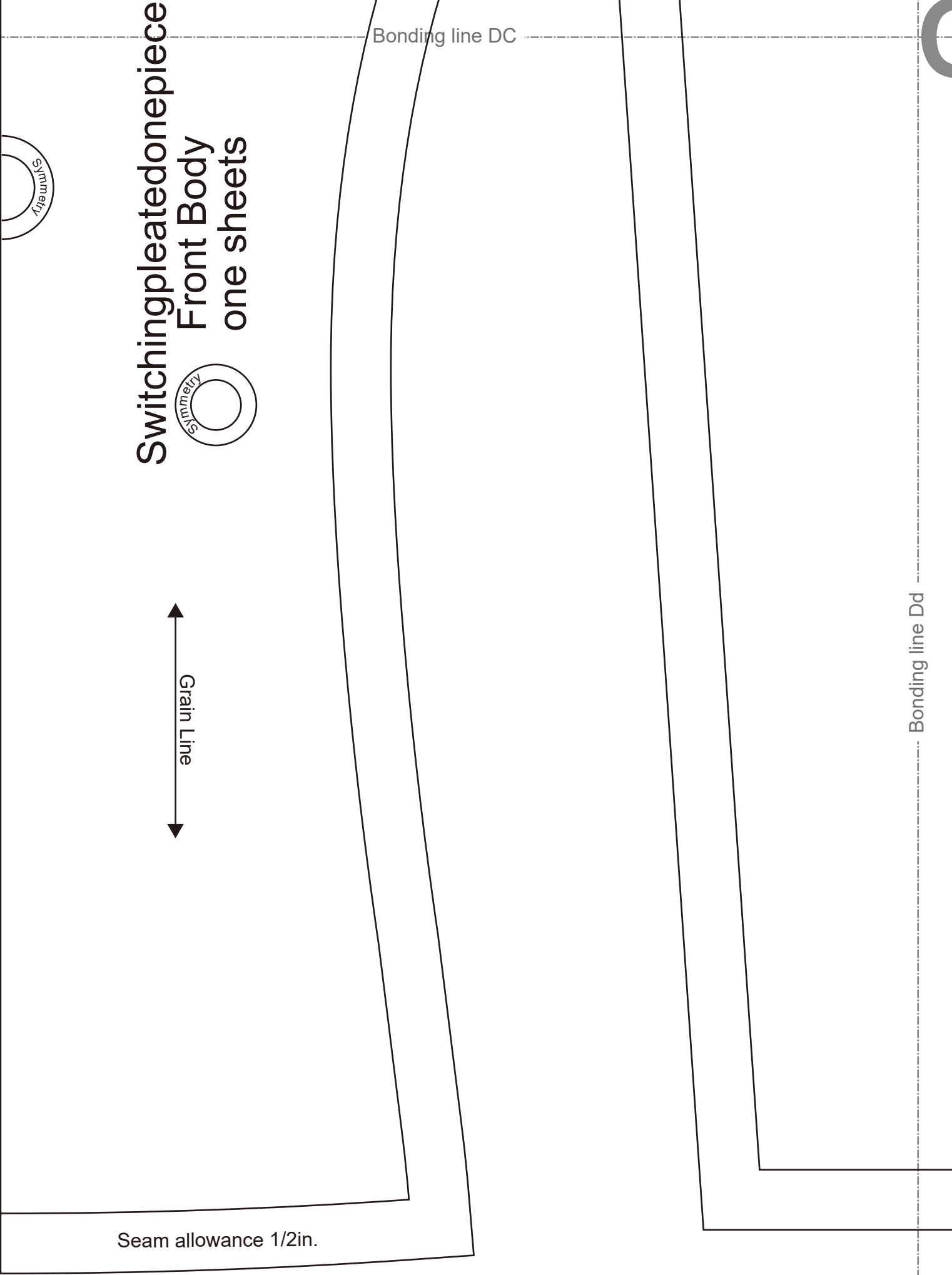
Bonding line DD



# Switching pleated done piece Front Body one sheets



Seam allowance 1/2in.



Switching pleated one piece  
Back Body (side)  
two sheets

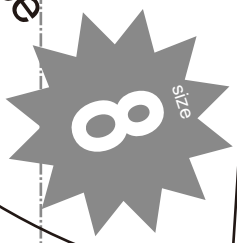
Grain Line

Seam allowance 1/2in.

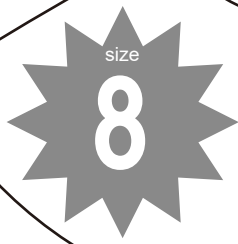
Bonding line Ad

Bonding line Ae

iece



Seam allowance 1/2in.



Switching pleated one piece  
Back Facing  
Fusible interlining  
two sheets

Grain Line

Seam allowance 1/2in.

Bonding line EA

**DRCOS**

SITE <https://dr-cos.info/en> <https://dr-cos.com/jp>  
MAIL [info@dr-cos.com](mailto:info@dr-cos.com)  
Twitter [@drcos\\_com](https://twitter.com/@drcos_com)  
pinterest <https://www.pinterest.jp/drcosinfo>



**Children's**

**Switchingpleatedonepiece  
Front Body(side)  
two sheets**

Bonding line EB

SW



Grain Line

Seam allowance 1/2in.

Bonding line Cd

Bonding line Ce

**DRCOS**

SITE [https://dr-cos.info\(en\)](https://dr-cos.info(en)) [https://dr-cos.com\(jp\)](https://dr-cos.com(jp))

MAIL [info@dr-cos.com](mailto:info@dr-cos.com)

Twitter [https://twitter.com/drcos\\_com](https://twitter.com/drcos_com)

pinterest <https://www.pinterest.jp/drcosinfo>

Back

size

8

Children's

Bonding

## Switching pleated one piece Sleeve two sheets

Bonding line Dd



Bonding line De

Seam allowance 1/2in.

Bonding line ED