

Grain Line

Bonding line Aa

DRCOS
 SITE: <http://dr-cos.info/en> <http://dr-cos.com/jp>
 MAIL: info@dr-cos.com
 Twitter: https://twitter.com/drcos_com
 facebook: <https://www.facebook.com/drcoscom>

Seam allowance 1/2in.

Grain Line

Bonding line AA

DR
 SITE: <http://dr-cos.com>
 MAIL: info@dr-cos.com
 Twitter: https://twitter.com/drcos_com
 facebook: <https://www.facebook.com/drcoscom>

Seam allowance 1/2in.

Bonding line AA

DRCOS
SITE <http://dr-cos.info/en>, <http://dr-cos.com/jp>
MAIL info@dr-cos.com
Twitter <https://twitter.com/dr-cos>
facebook <https://www.facebook.com/drcoscom>

Bonding line Ba

Switching
One Piece Dress
Back body side
two sheets

Seam allowance 1/2in.

DRCOS
SITE <http://dr-cos.info/en>, <http://dr-cos.com/jp>
MAIL info@dr-cos.com
Twitter <https://twitter.com/dr-cos>
facebook <https://www.facebook.com/drcoscom>

Bonding line AB

Bonding line AB

Seam allowance 1/2in.

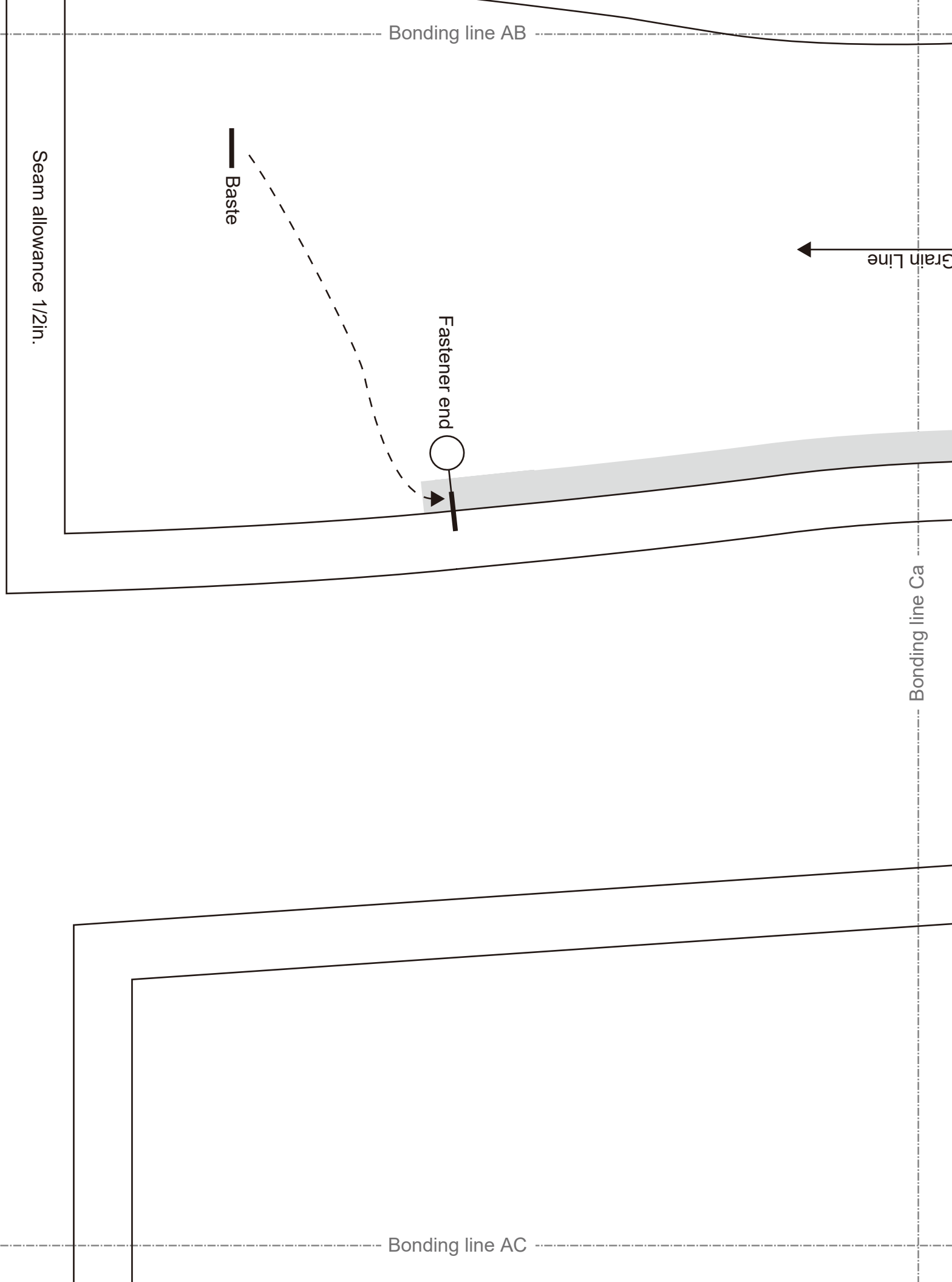
— Baste

Fastener end

← Grain Line

Bonding line Ca

Bonding line AC



Bonding line AC

Seam allowance 1/2in.



Bonding line Da

Bonding line AD

CADILCO

Bonding line Ab



**Switching
One Piece Dress
Front body
one sheets**



Bonding line Aa



LADIES

Bonding line BA

**Switching
One Piece Dress
Front body side
two sheets**

ep
ass

Bonding line BA

IES'

Bonding line Ba

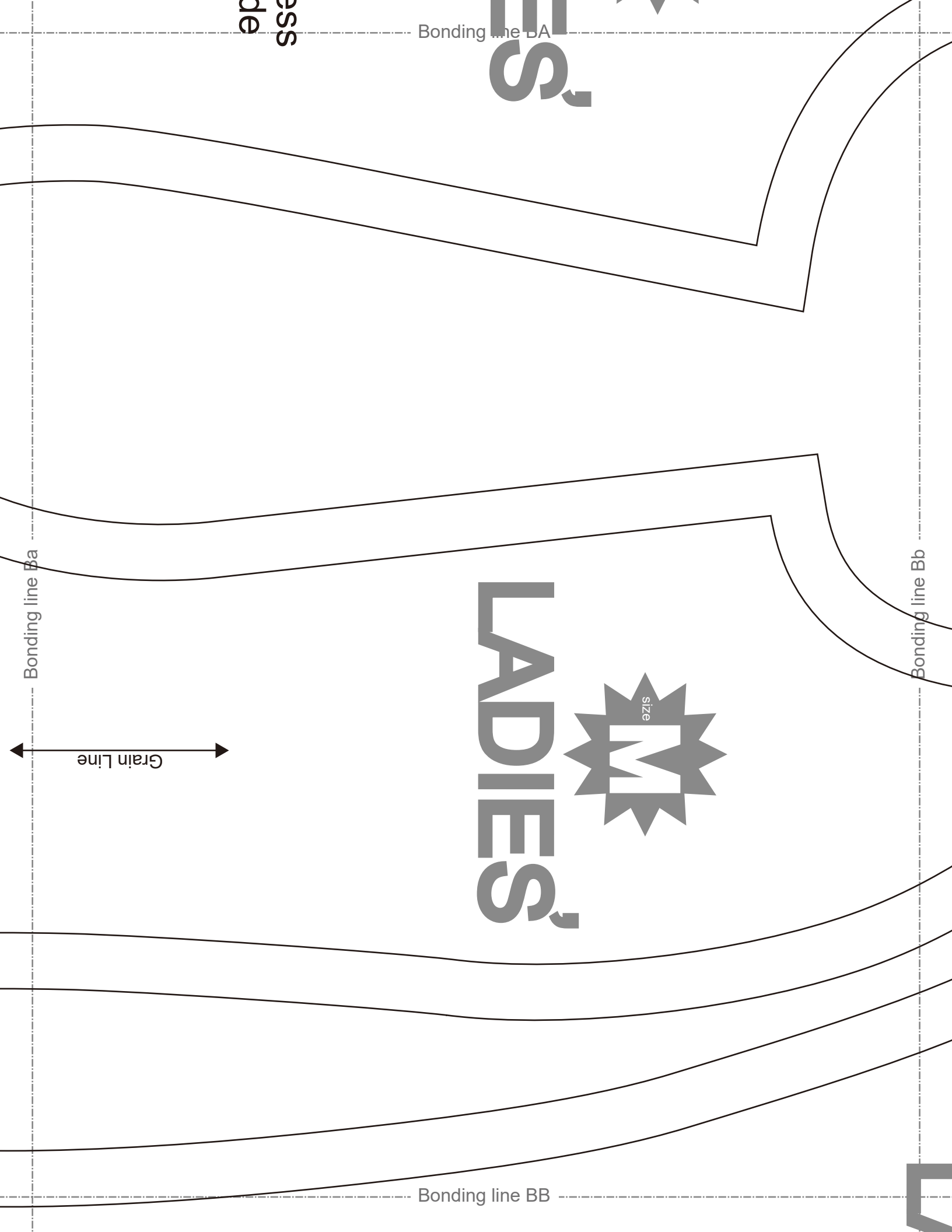
Bonding line Bb

Grain Line

LADIES'

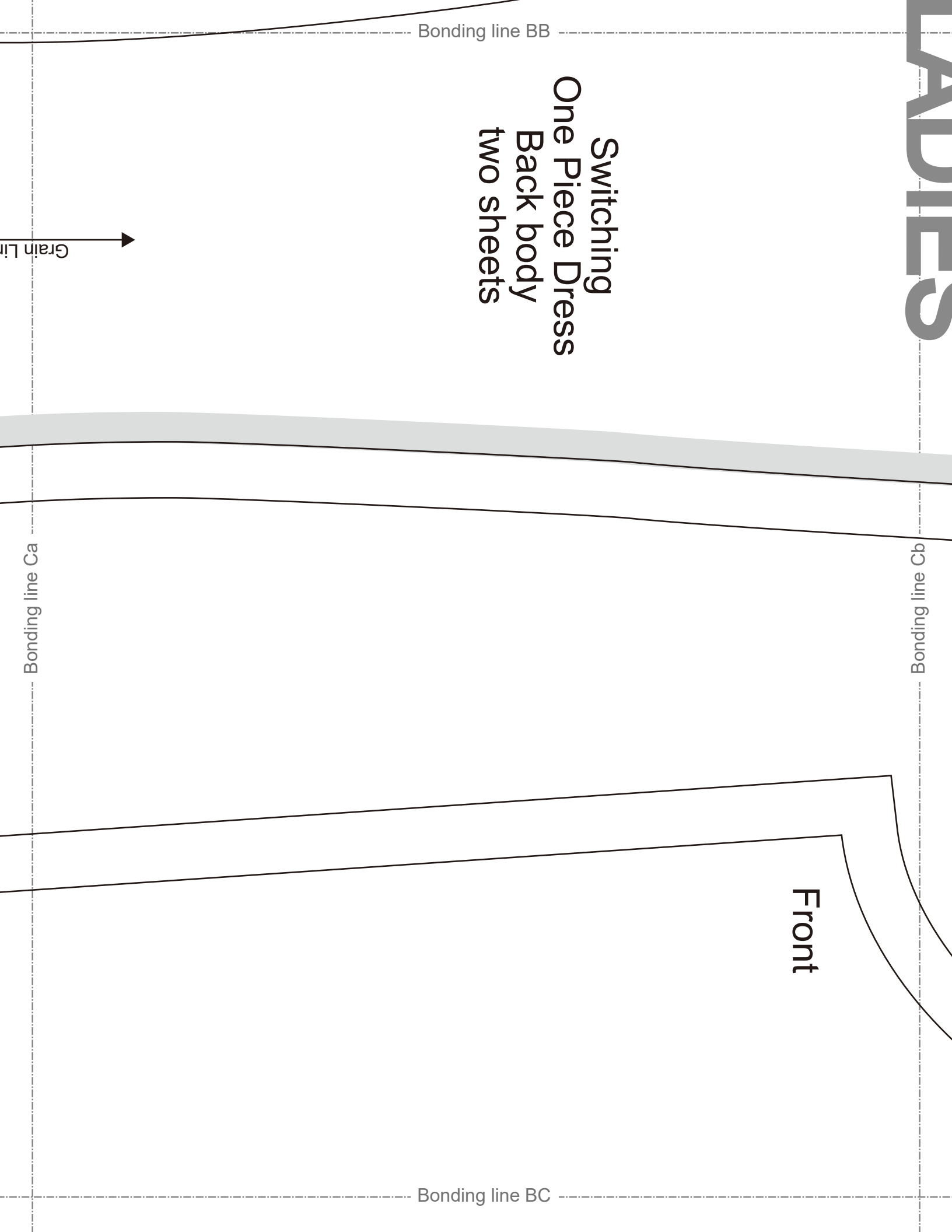


Bonding line BB



LADIES

Switching
One Piece Dress
Back body
two sheets



Bonding line BC



Switching
One Piece Dress
Sleeve
two sheets

Back

Bonding line Db

Bonding line BD

Bonding line Da

LADIES'



Bonding line Ab

Facing Line

Bonding line Ac

Bonding line CA

Bonding line CA

Bonding line Bb

Bonding line Bc

DRCOS
 http://dr-cos.info/en) http://dr-cos.com(fp)
 MAIL info@dr-cos.com
 twitter https://twitter.com/dr-cos_com
 facebook https://www.facebook.com/drcoscom

DRCOS
 SITE <http://dr-cos.info/en>) [http://dr-cos.com\(fp\)](http://dr-cos.com(fp))
 MAIL info@dr-cos.com
 T twitter https://twitter.com/dr-cos_com
 facebook <https://www.facebook.com/drcoscom>

Bonding line CB



LADIES'



Bonding line CB

Facing Line

Fusible Stay tape

Bonding line Cb

Bonding line Cc

DRCOS
SITE <http://dr-cos.info/en> <http://dr-cos.com/jp>
MAIL info@dr-cos.com
Twitter <https://twitter.com/dr-cos>
facebook <https://www.facebook.com/drcoscom>

Bonding line CC

g
ress
nem
ts

press
6

SS

Bonding line CC



Bonding line Db

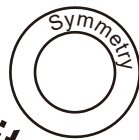
Bonding line Dc

Bonding line CD

Bonding line Ac



size **M**
LADIES'



Switching
One Piece Dress
Front body hem
one sheets



Bonding line Ad

Bonding line DA

DRCCO
SITE <http://dr-co.com>
MAIL info@dr-co.com
Twitter [@drccoco](#)

Bonding line DA

DRCOS
SITE [http://dr-cos.info\(en\)](http://dr-cos.info(en)) [http://dr-cos.com\(jp\)](http://dr-cos.com(jp))
MAIL info@dr-cos.com
Twitter https://twitter.com/@drcos_com
facebook <https://www.facebook.com/drcoscom>

Seam allowance 1/2in.

Seam allowance 1/2in.



Switching
One Piece Dress
Back body side hem
two sheets

DRCOS
SITE <http://dr-cos.com>
MAIL info@dr-cos.com
Twitter https://twitter.com/@drcos_com
facebook <https://www.facebook.com/drcoscom>

Bonding line Bc

Bonding line Bd

LADIES
Bonding line DP

Switching
One Piece Dress
Back body hem
two sheets

Bonding line DC

Bonding line Cc

Seam allowance 1/2in

Grain Line



Bonding line Cd

Grain Line



Symmetry



Bonding line DP

size

W



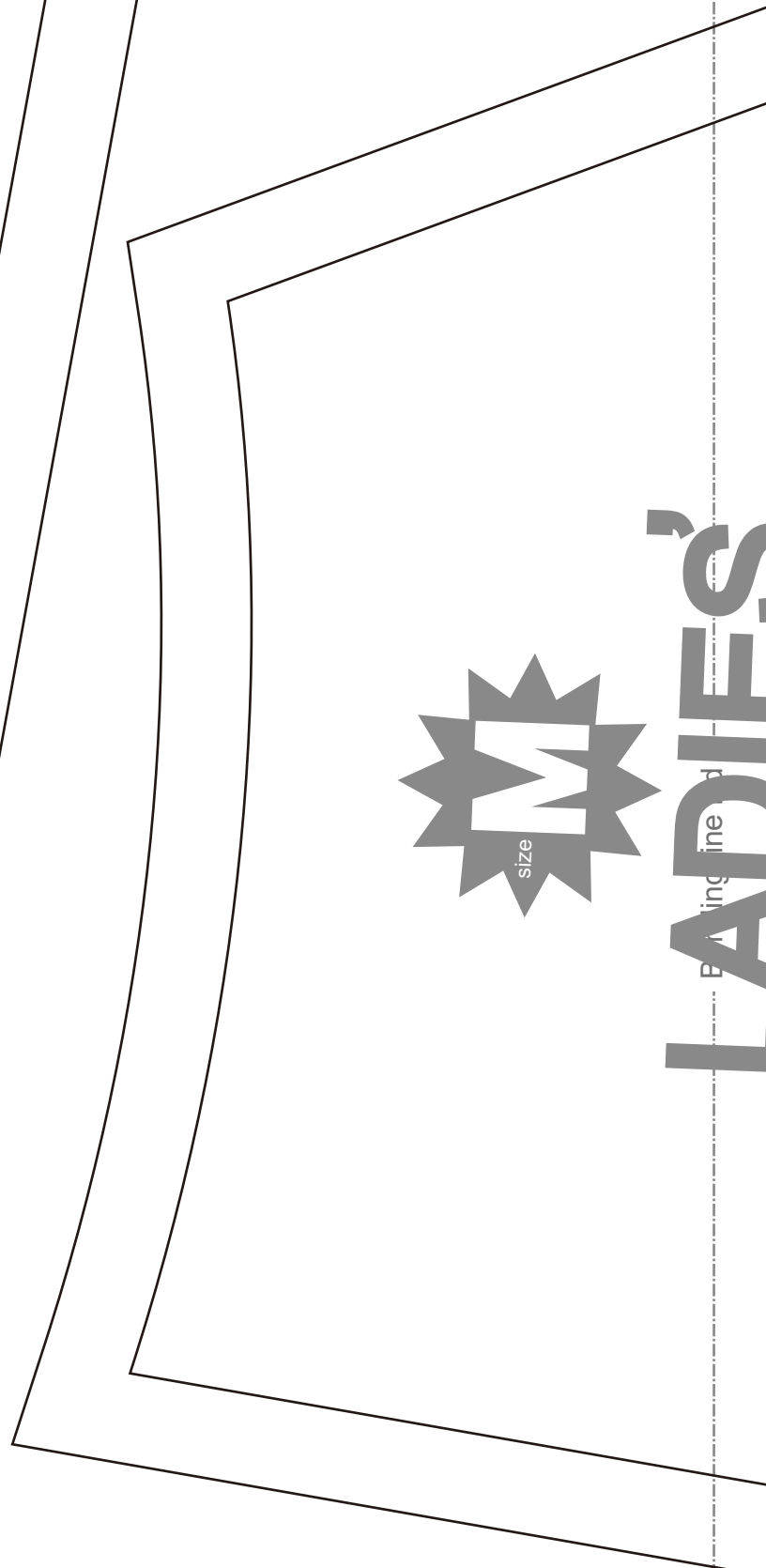
Switching
One Piece Dress

Bonding line DC

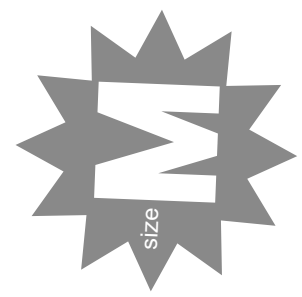
LADIES



Bonding line Dc



LADIES'



Bonding line DD

Bonding line EB

Switching
One Piece Dress
Back Facing two sheets
Fusible interlining two sheets

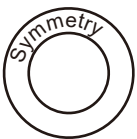
Grain Line

Seam allowance 1/2in.

Bonding line Cd

Bonding line Ce

Switching
One Piece Dress
Front Facing one sheets
Fusible interlining one sheets



Grain Line

Seam allowance 1/2in.

Bonding line EC

COS
on
http://dr-cos.com (ip)
@drCOS_com
w.facebook.com/drCOScom

LADIES

Switching
One Piece Dress
Front body side hem
two sheets



Bonding line EC

Bonding line ED



Seam allowance 1/2in.

Bonding line De