

Standcollarblouse II
Collar two sheets
Fusible interlining one sheets

Seam allowance 1/2in.



DRCOS

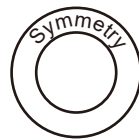
SITE [https://dr-cos.info\(en\)](https://dr-cos.info(en)) <https://dr-cos.com>
MAIL info@dr-cos.com
Twitter https://twitter.com/drcos_com
pinterest <https://www.pinterest.jp/drcosinfo>

Bonding line Aa

Bonding line AA

Bonding line AA

LADIES' size



Standcollarblouse II
Back Body
one sheets



Bonding line Ba

Bonding line AB

Bonding line AB



Grain Line

Bonding line Ca

Seam allowance 1/2in.

Bonding line AC

Fus

LADIES' FIT

Size

RCOS
-cos.com
/twitter.com/@drcos.com
/www.pinterest.jp/drcosinfo

Bonding line Aa

Bonding line Ab

Bonding line BA

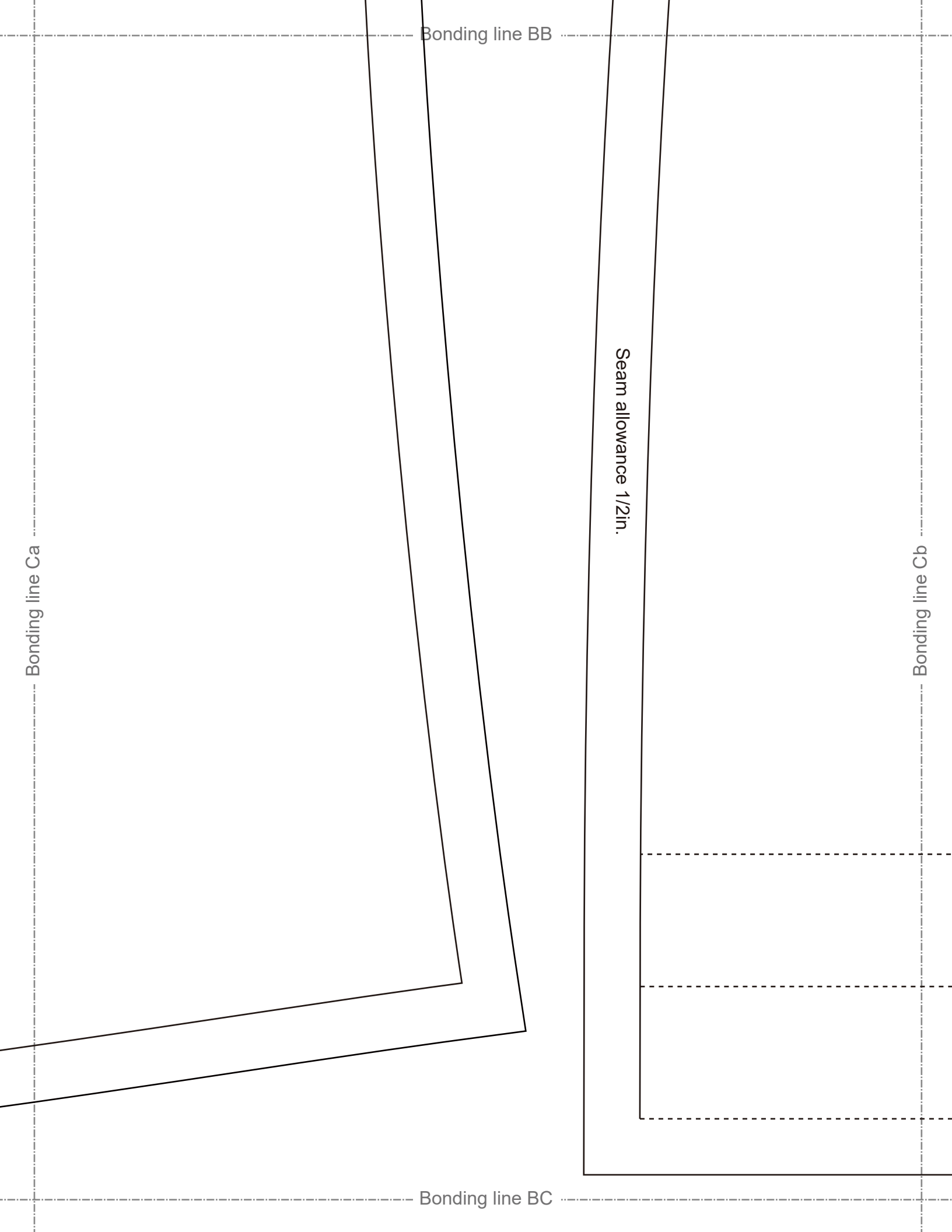
Bonding line BA

Bonding line Ba

Bonding line Bb

Bonding line BB


SITE <https://dr-cos.info/en> <https://dr-cos.com/jp>
MAIL info@dr-cos.com
Twitter [@drcos.com](https://twitter.com/drcos.com)
Pinterest <https://www.pinterest.jp/drcosinfo>



Bonding line Ca

Bonding line BB

Seam allowance 1/2in.

Bonding line Cb

Bonding line BC

DRCC
SITE <https://dr-cos.info/en> ht
MAIL info@dr-cos.com
Twitter <https://twitter.com/drcc>
Pinterest <https://www.pinterest>

Bonding line Ab

Bonding line CA

back

Bonding line Ac

LADIES' ^{size} IT

Bonding line CA

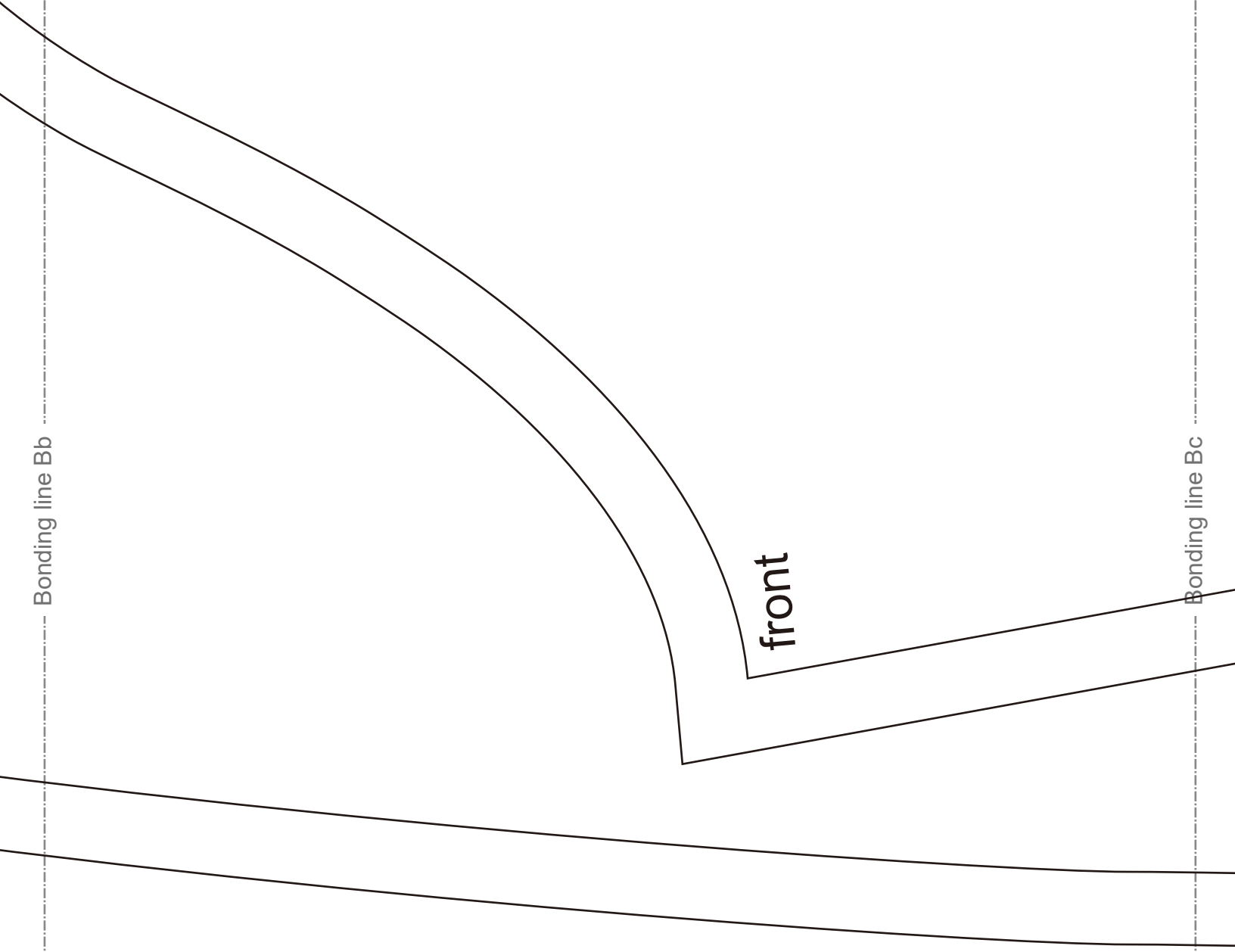


Bonding line Bb

Bonding line Bc

front

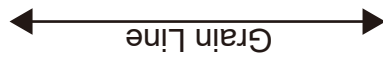
Bonding line CB



Bonding line CB

Bonding line Cb

Bonding line Cc



Bonding line CC

Bonding line Ac

Standcollarblouse II
Sleeve
two sheets



Bonding line Ad

Bonding line DA

Bonding line DA

Bonding line Bc

Bonding line Bd

Bonding line DB



Bonding line DB



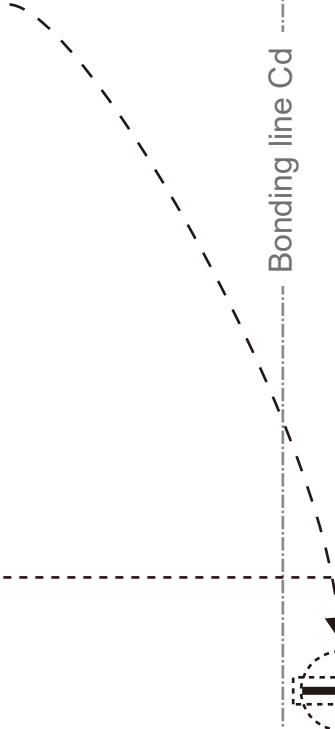
LADIES' size

Standcollarblouse II
Front Body
two sheets

Bonding line Cc

Bonding line Cd

Baste



bend line

bend line

Bonding line DC

Bonding line Ad



Seam allowance 1/2in.

Bonding line EA

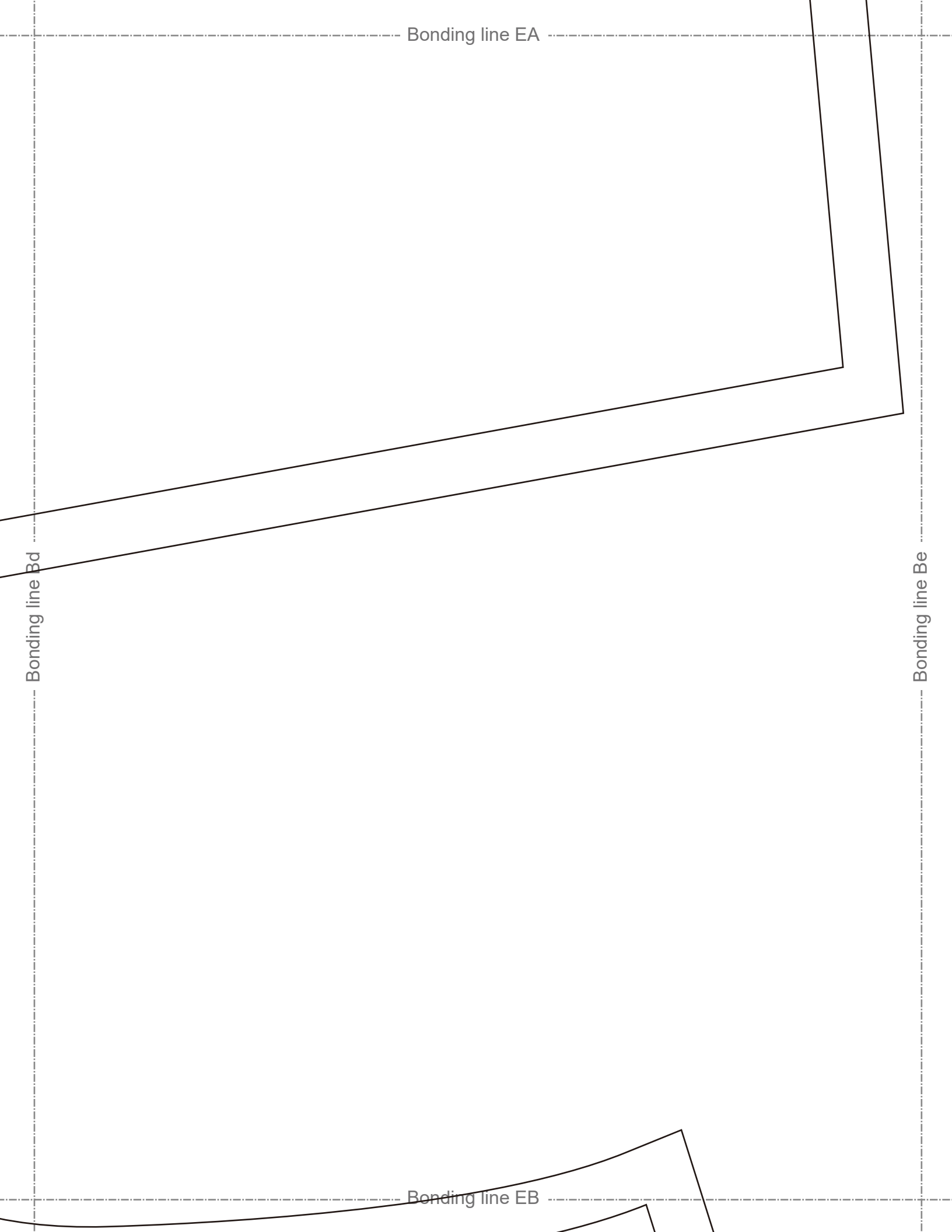
Bonding line Ae

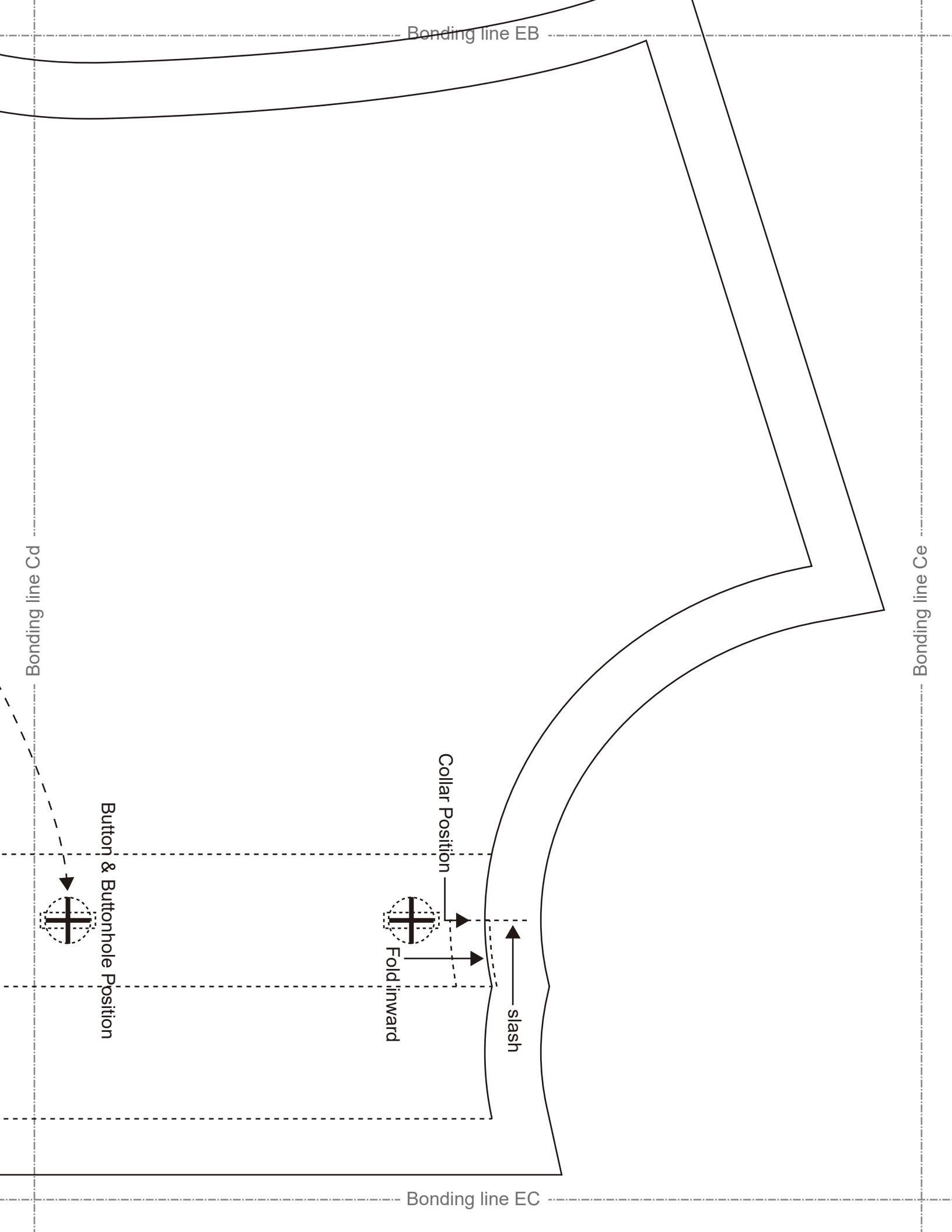
Bonding line EA

Bonding line Bd

Bonding line Be

Bonding line EB





Bonding line EB

Bonding line Cd

Bonding line Ce

Bonding line EC

Button & Buttonhole Position

Collar Position

Fold inward

slash

