

[Home](#)

[Back to Squareneckblouse page](#)

Seam allowance 1/2in.

DRCOS
SITE <http://dr-cos.info/en> <http://dr-cos.com/jp>
MAIL info@dr-cos.com
TWITTER https://twitter.com/dr-cos_com
FACEBOOK <https://www.facebook.com/drcoscom>

Grain Line

Bonding line Aa



Bonding line AA

Bonding line AA

Bonding line Ba

Grain Line

Seam allowance 1/2in.

DRCOS
SITE <http://dr-cos.info/en/> <http://dr-cos.com/jp/>
MAIL info@dr-cos.com
Twitter [@drcos_com](https://twitter.com/@drcos_com)
facebook <https://www.facebook.com/drcoscom>

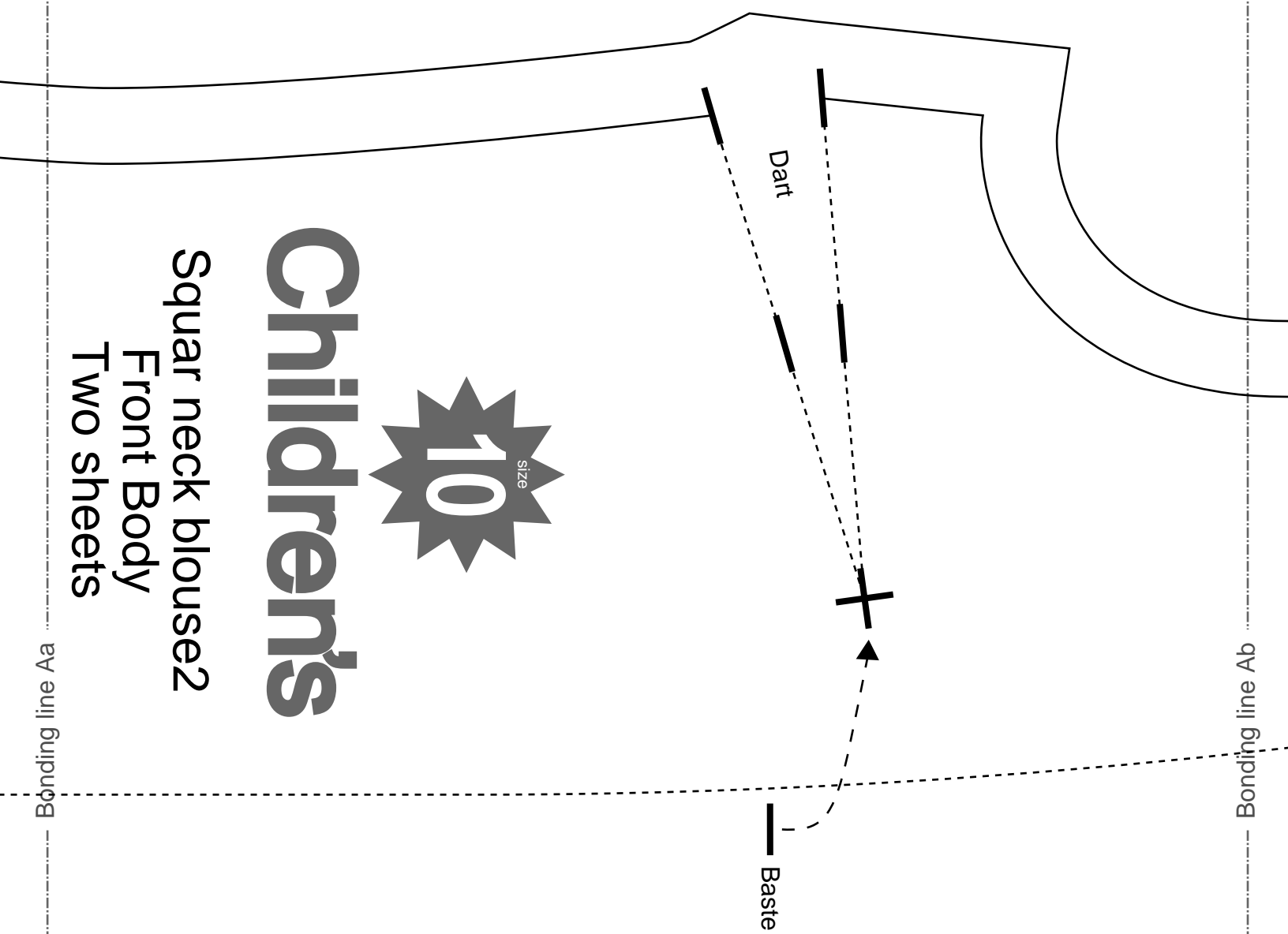
Bonding line AB

Children's

Squar neck blouse2

Front Body
Two sheets

SIZE
10



Button position



Bonding line BA

Bonding line BA



Children's

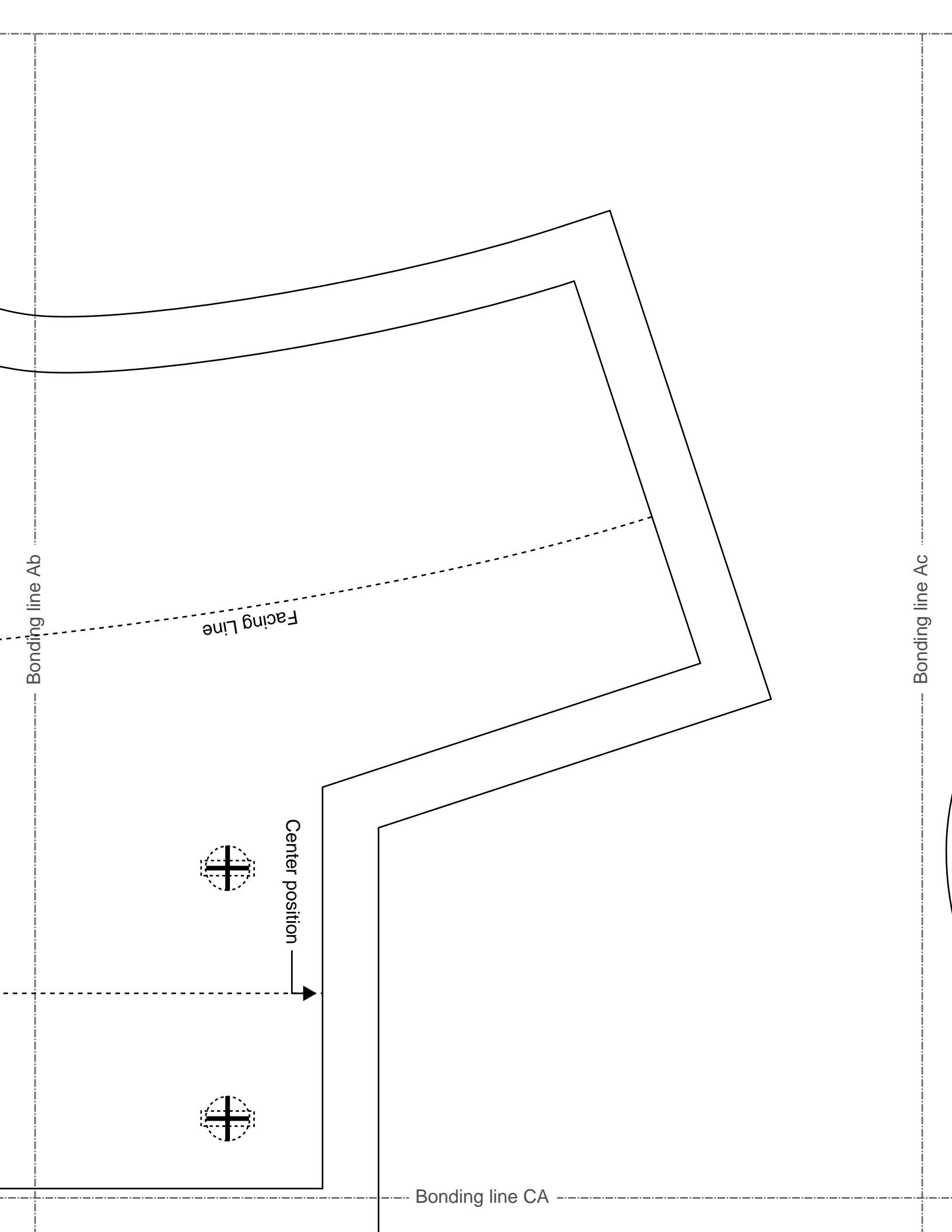
Squar neck blouse2
Back Body
one sheets



Bonding line Ba

Bonding line Bb

Bonding line BB



Bonding line Ab

Facing Line

Center position

Bonding line CA

Bonding line Ac

Bonding line CA

Bonding line Bb

Bonding line Bc

Facing Line

SITE <http://dr-cos.info/en> <http://dr-cos.com/jp>
MAIL info@dr-cos.com
Twitter <https://twitter.com/dr-cos>
facebook <https://www.facebook.com/dr-cos.com>

DRCOS

Bonding line CB

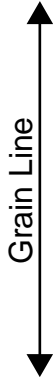
Bonding line Cb

Bonding line CB

Bonding line Cc

Seam allowance 1/2in.

Squar neck blouse2
Facing two sheets
Fusible interlining two sheets



Bonding line CC

Bonding line CC

Children's



Bonding line Db

Bonding line Dc

Bonding line CD

Bonding line Ac

DRCOS
 SITE <http://dr-cos.info/en> [http://dr-cos.com\(pp\)](http://dr-cos.com/pp)
 MAIL info@dr-cos.com
 Twitter https://twitter.com/dr-cos_com
 facebook <https://www.facebook.com/drcoscom>

size
10

Children's

Squar neck blouse2
 Sleeve
 two sheets

Grain Line

Back

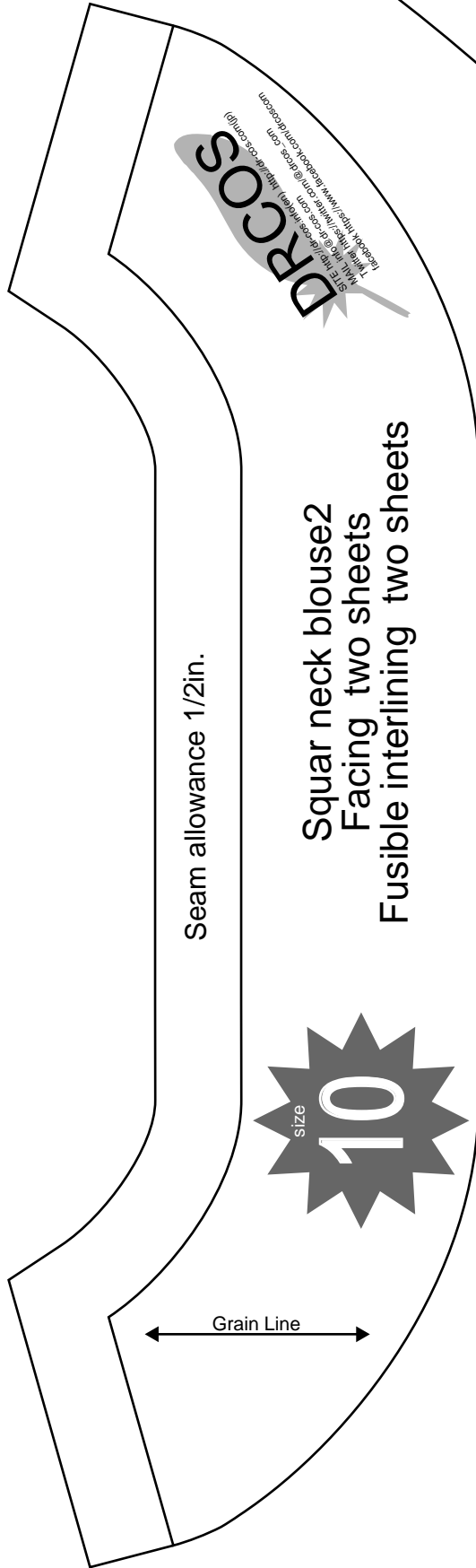
Seam allowance 1/2in.

Bonding line DA

Bonding line Ad

Bonding line Bc

Bonding line DA



Front

Bonding line Bd

Bonding line DB