

[Home](#)

[Back to Smock page](#)

DRCOS

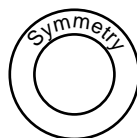
SITE [http://dr-cos.info\(en\)](http://dr-cos.info(en)) [http://dr-cos.com\(jp\)](http://dr-cos.com(jp))
MAIL info@dr-cos.com
Twitter [@drcos_com](https://twitter.com/@drcos_com)
facebook <https://www.facebook.com/drcoscom>

Bonding line Aa

Bonding line AA

Bonding line AA

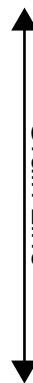
LADIES' size



Smock
Body
two sheets

Bonding line AB

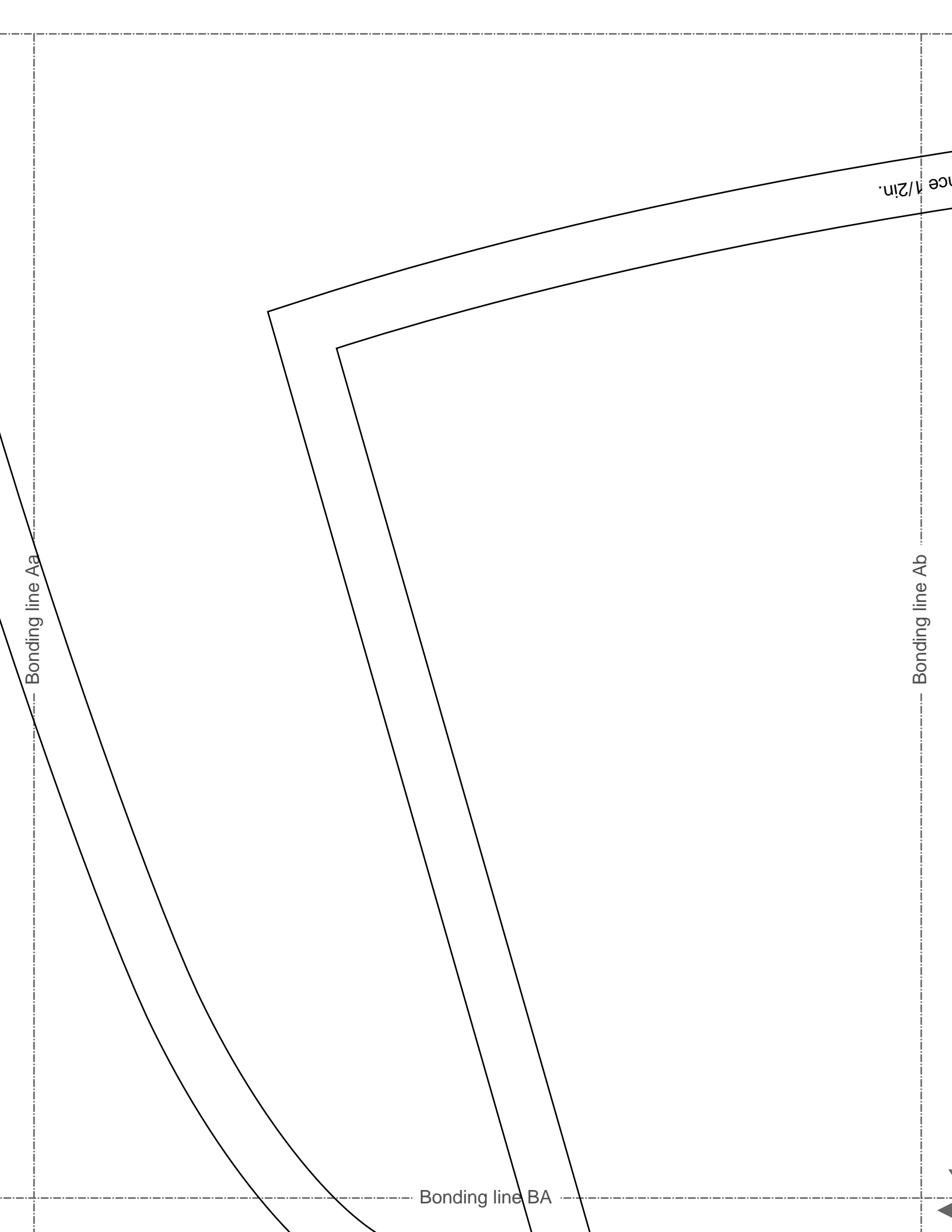
Bonding line AB



Grain Line

Bonding line Ca

Bonding line AC

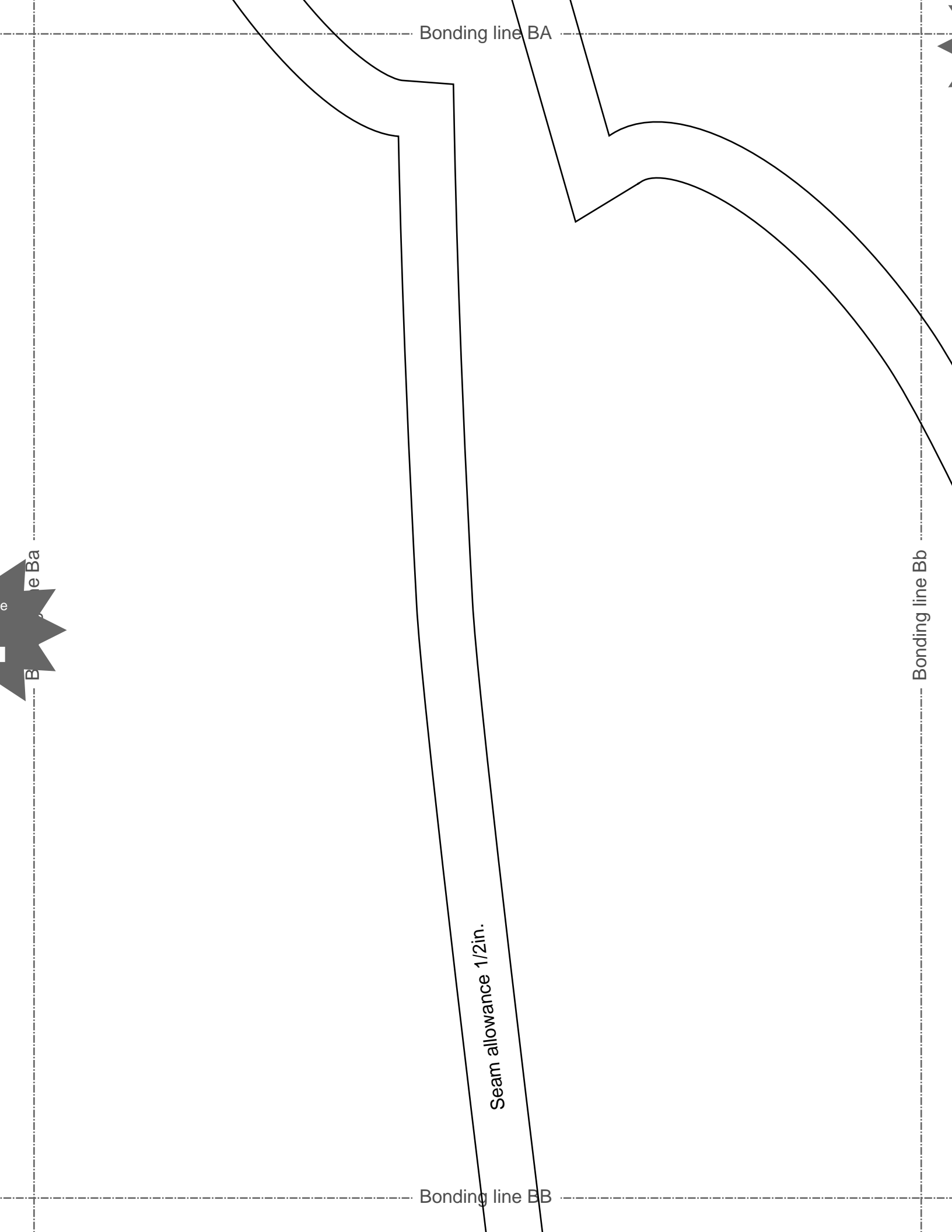


Bonding line Aa

1/2 in.

Bonding line Ab

Bonding line BA



Bonding line BA

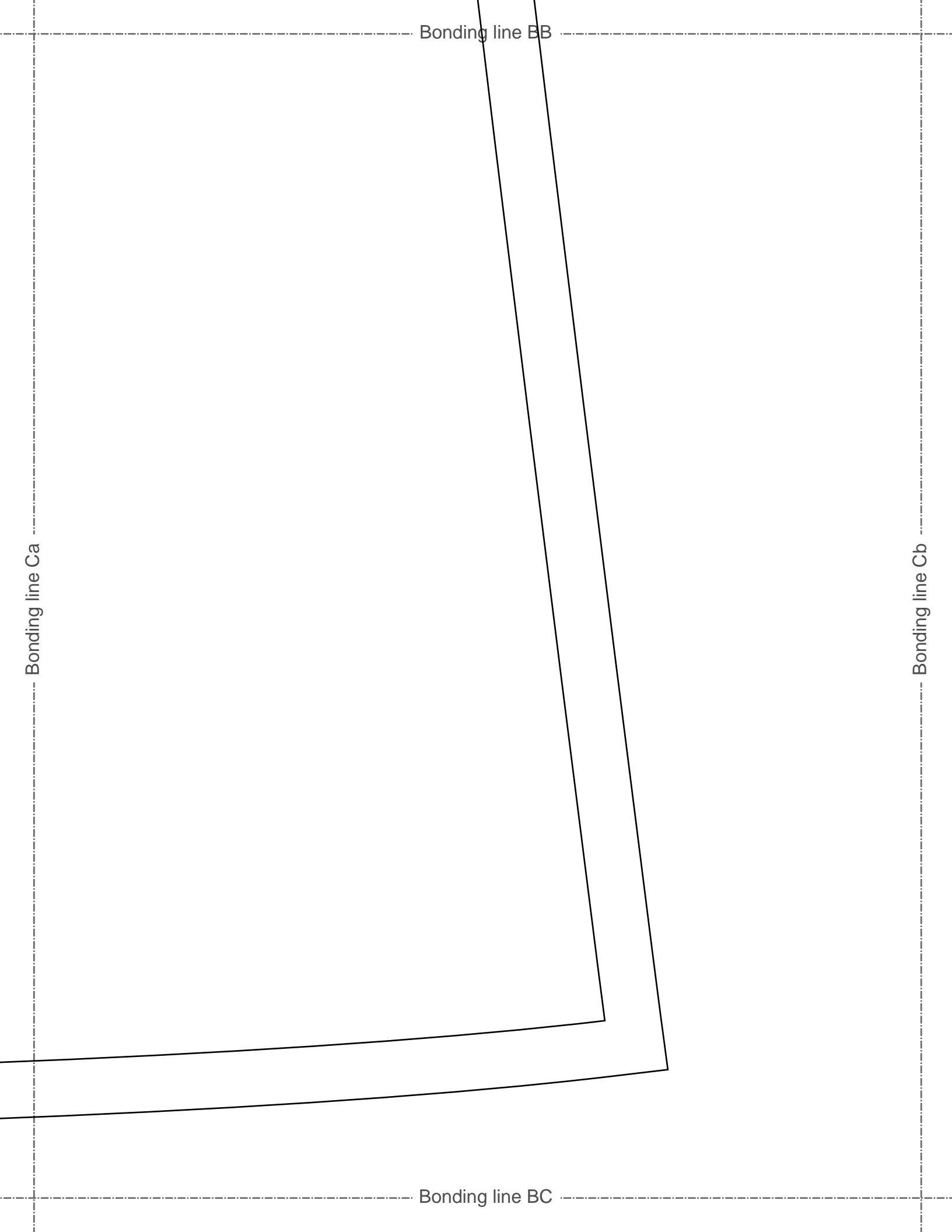
e Ba

B

Seam allowance 1/2in.

Bonding line BB

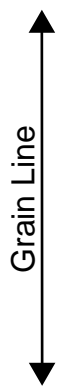
Bonding line Bb



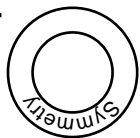
Seam allowance 1/2"r

Bonding line Ab

Bonding line Ac



Smock Sleeve
two sheets





Bonding line Bb

Bonding line Bc

Bonding line CB

DRCOS
SITE [http://dr-cos.info\(en\)](http://dr-cos.info/en) [http://dr-cos.com\(jp\)](http://dr-cos.com(jp))
MAIL info@dr-cos.com
Twitter https://twitter.com/dr-cos_com
facebook <https://www.facebook.com/drcoscom>