

DRCOS

SITE <http://drcos.info/en> <http://drcos.com/jp>
MAIL info@drcos.com
Twitter https://twitter.com/drcos_com
facebook <https://www.facebook.com/drcoscom>

I'm not going to put any Facing here.

Facing Cut Line

Bonding line AA

Bonding line Aa

Bonding line AA

Sleeveless Coat
Front body facing
two sheets
Fusible interlining
two sheets

Seam allowance 1/2in.



en's

Bonding line AB

Bonding line Ba

Children



Bonding line AB

Bonding line AC

Bonding line Ca

Bonding line AC

Seam allowance

Sleeveless Coat
collar stand
two sheets
Fusible interlining
one sheets

Grain Line

Child

Seam allowance

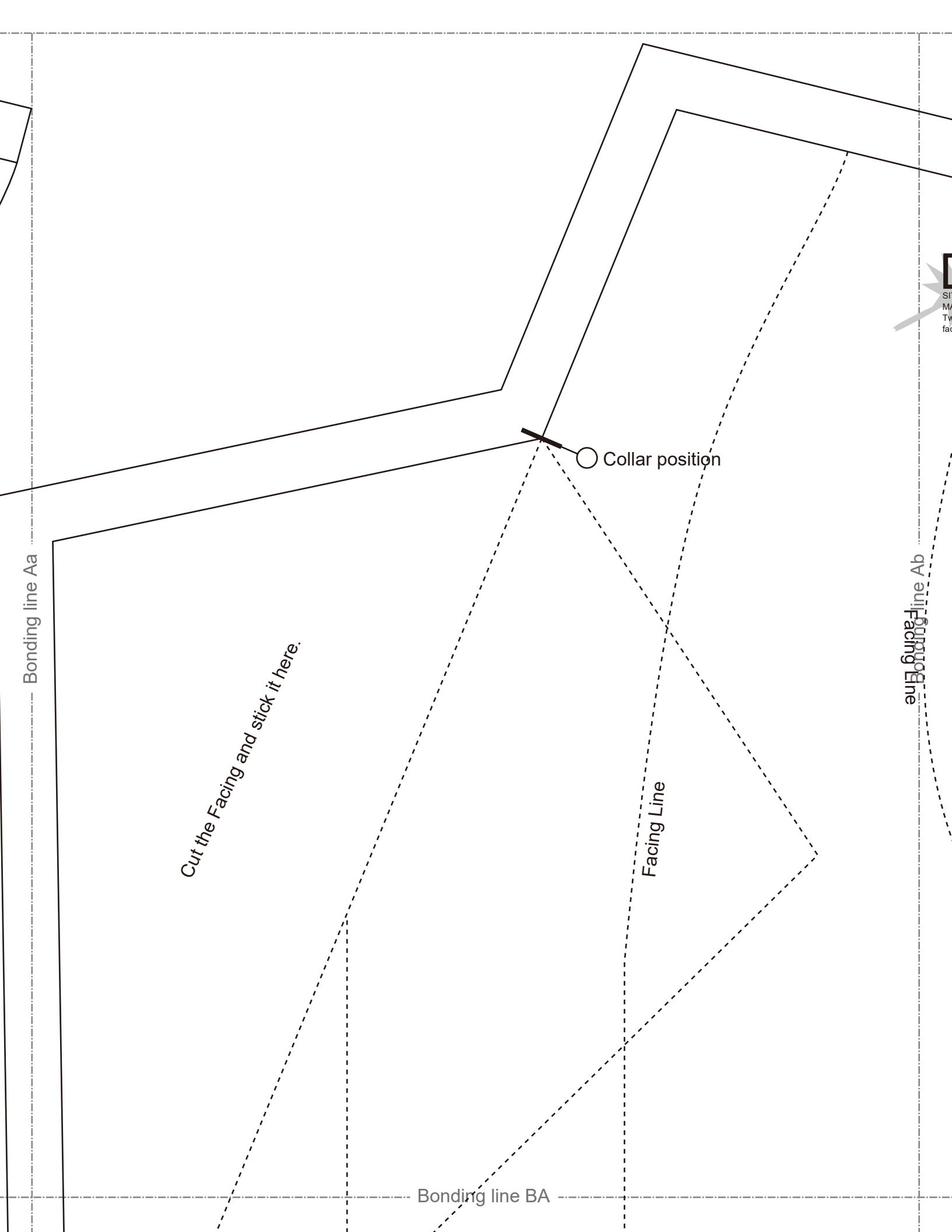
Bonding line Da

Sleeveless Coat
Collar
two sheets
Fusible interlining
one sheets

Grain Line

Child

Bonding line AD



Bonding line Aa

Cut the Facing and stick it here.

Bonding line BA

○ Collar position

Facing Line

Bonding line Ab

Facing Line

SI
M
Tw
fac

Sleeveless Front bodice two sheets

Bonding line Ba

Bonding line BA

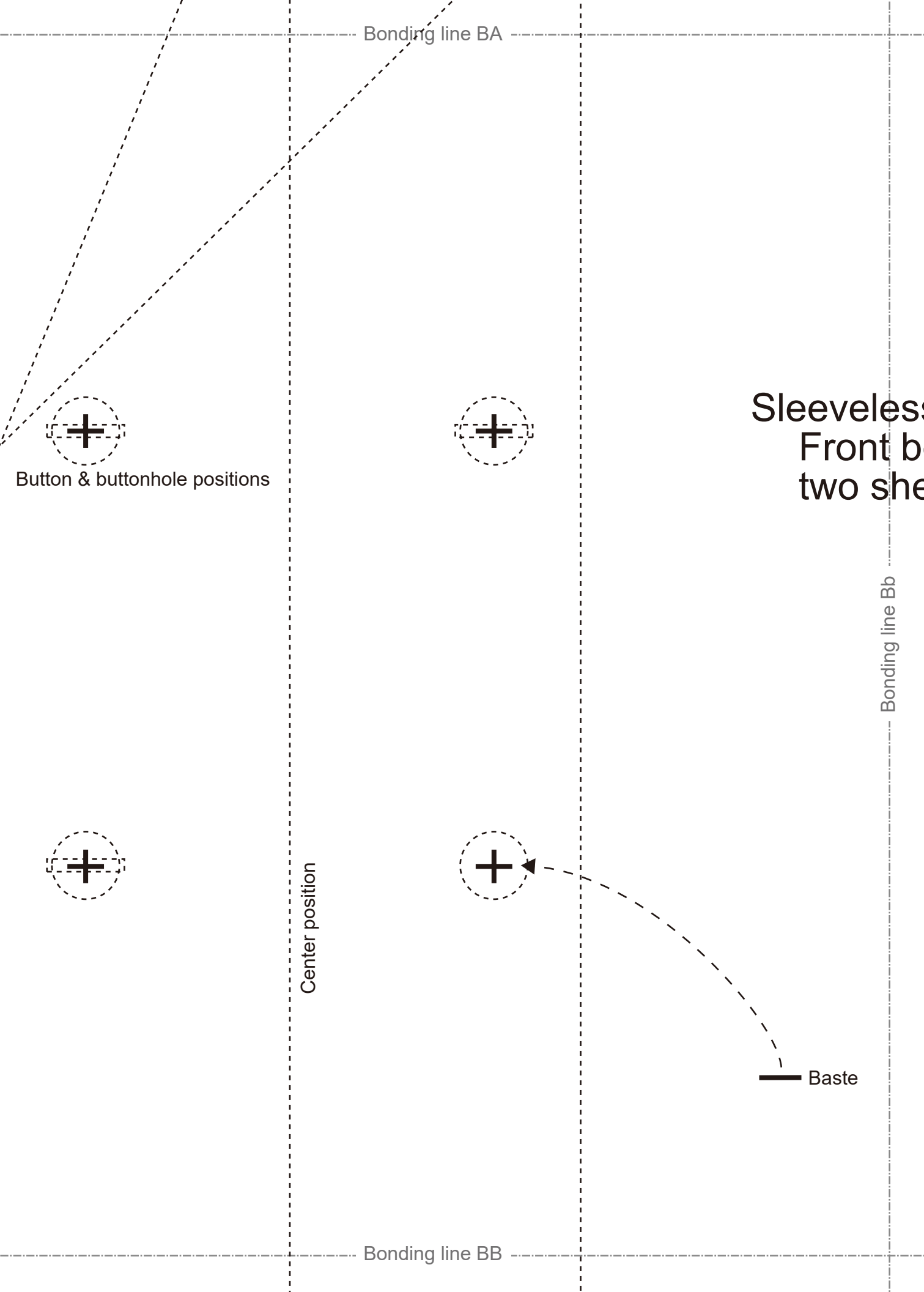
Bonding line Bb

Bonding line BB

Button & buttonhole positions

Center position

Baste



Childr

Bonding line Ca

Bonding line BB



Bonding line Cb

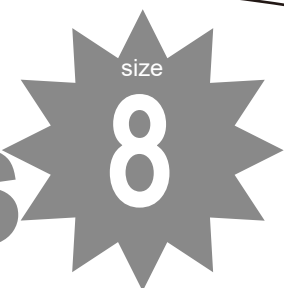
Bonding line BC

Bonding line BC

Seam allowance 1/2in.

allowance 1/2in.

Children's

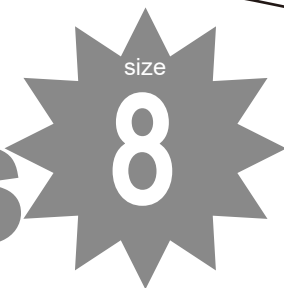


DRCOS

SITE [http://dr-cos.info\(en\)](http://dr-cos.info(en)) [http://dr-cos.com\(jp\)](http://dr-cos.com(jp))
MAIL info@dr-cos.com
Twitter https://twitter.com/drcos_com
facebook <https://www.facebook.com/drcoscom>

allowance 1/2in.

Children's



DRCOS

SITE [http://dr-cos.info\(en\)](http://dr-cos.info(en)) [http://dr-cos.com\(jp\)](http://dr-cos.com(jp))
MAIL info@dr-cos.com
Twitter https://twitter.com/drcos_com
facebook <https://www.facebook.com/drcoscom>

Bonding line BD

Bonding line Da

Bonding line Db

DRCOS

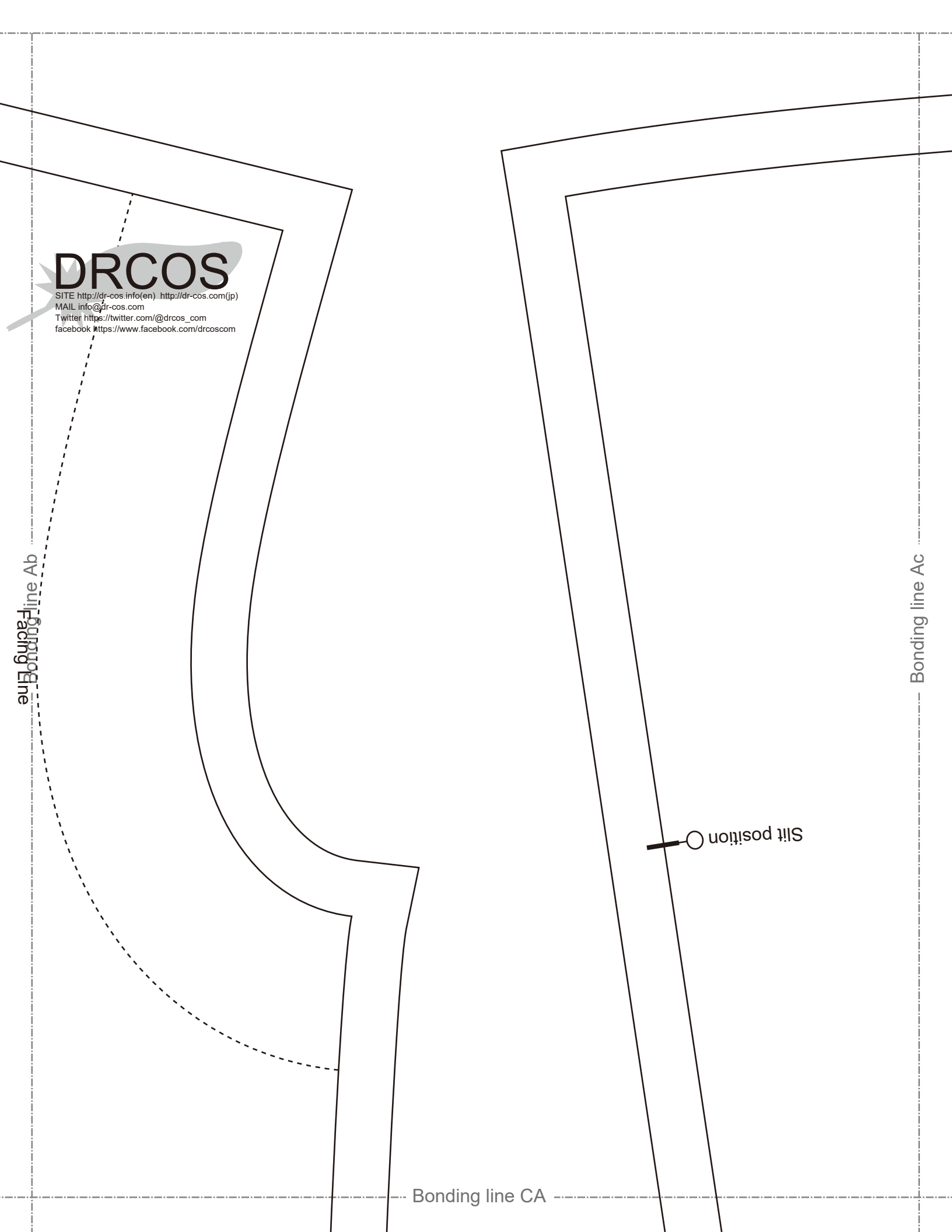
SITE [http://dr-cos.info\(en\)](http://dr-cos.info(en)) [http://dr-cos.com\(jp\)](http://dr-cos.com(jp))
MAIL info@dr-cos.com
Twitter https://twitter.com/drcos_com
facebook <https://www.facebook.com/drcoscom>

Facing Line Ab

Bonding line Ac

Bonding line CA

Silt position



less Coat
nt body
o sheets

Bonding line Bb

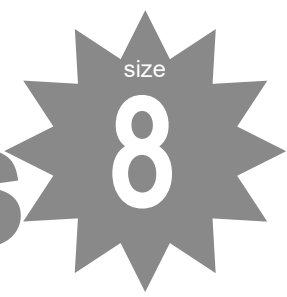
Bonding line CA

Bonding line Bc

Bonding line CB



dren's



Bonding line CB

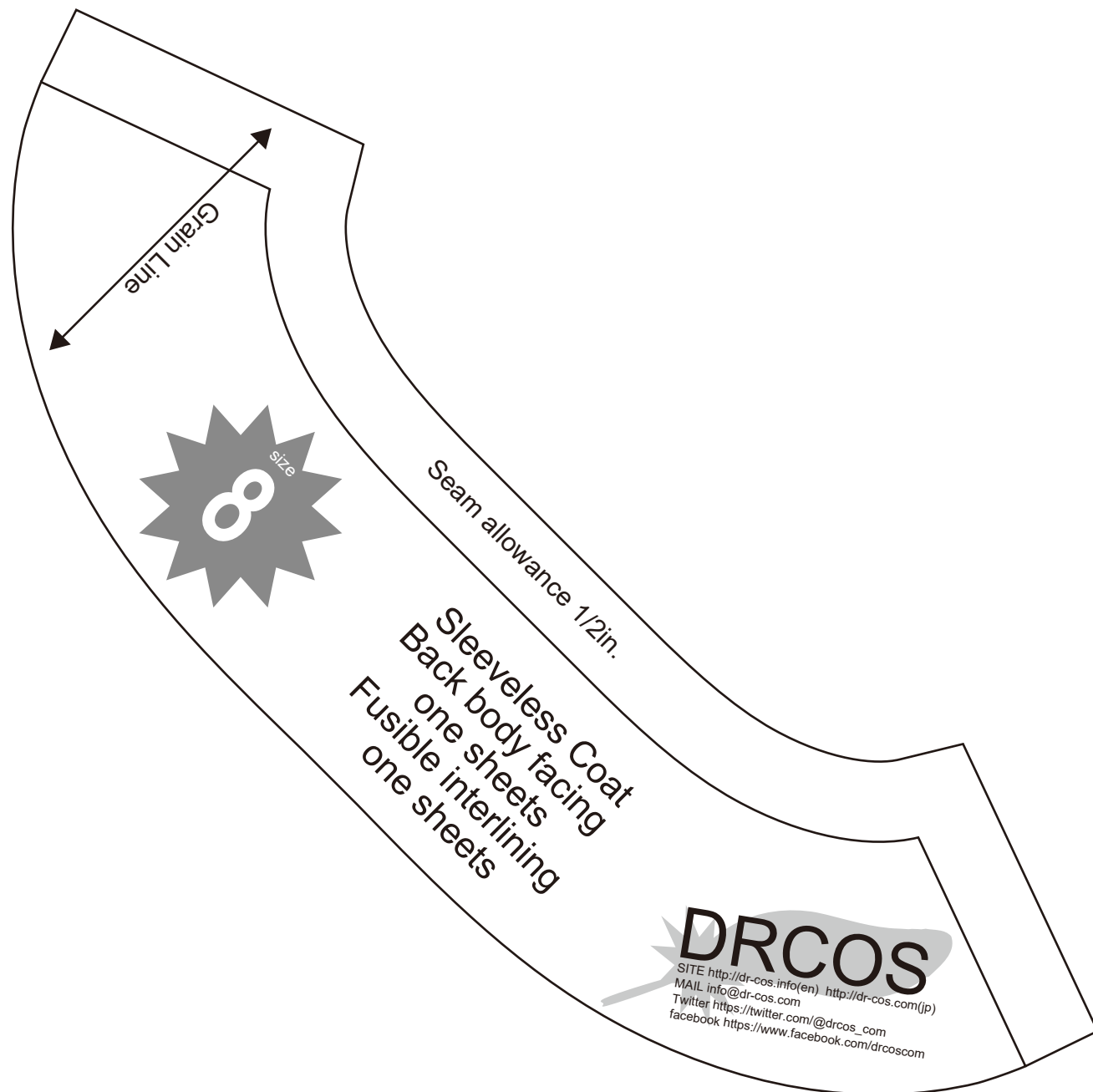
Bonding line Cb

Bonding line Cc

Bonding line CC

S
os.com(p
w
id/pscom

Bonding line CC



Bonding line Db

Bonding line Dc

Bonding line CD

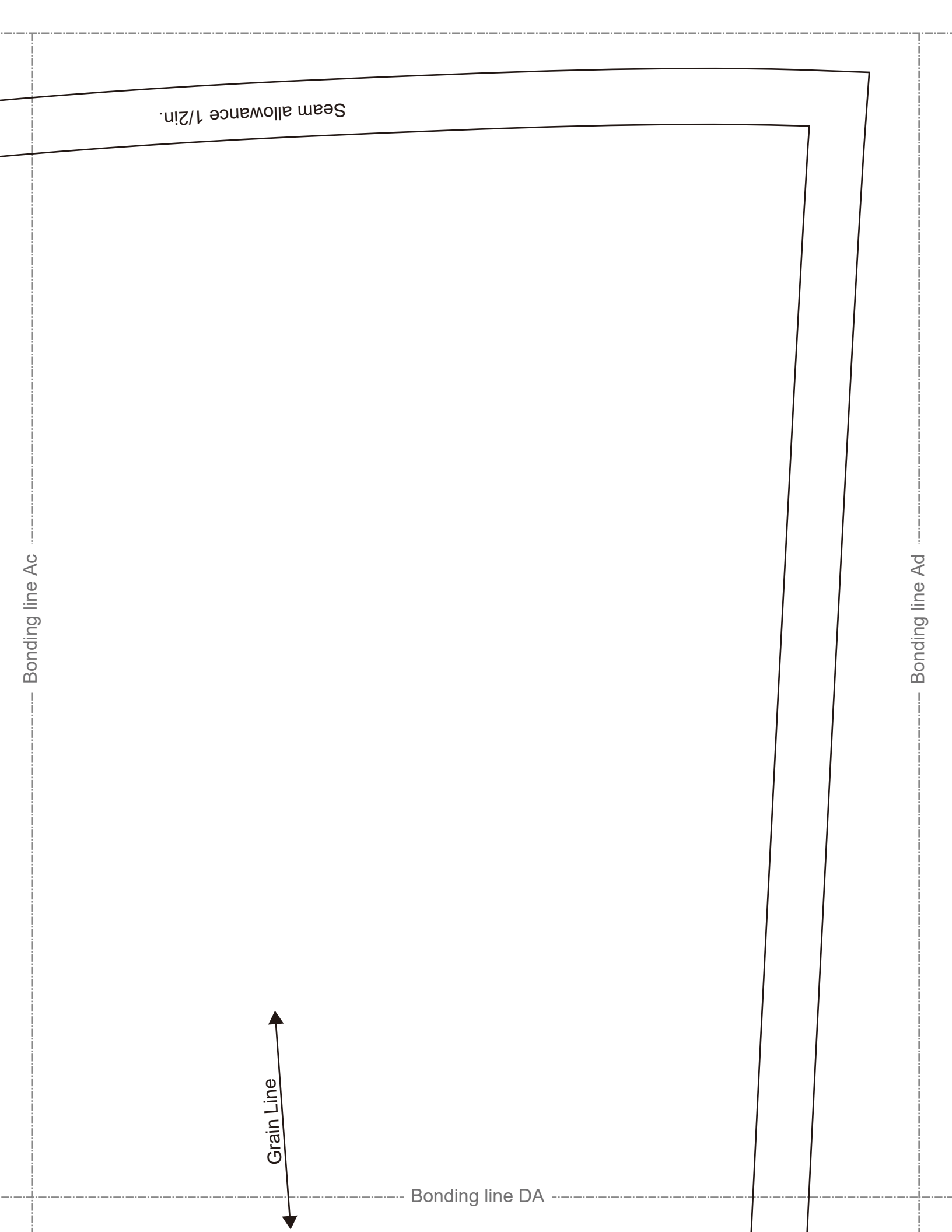
Bonding line Ac

Bonding line Ad

Seam allowance 1/2 in.

Grain Line

Bonding line DA



Bonding line DA



Bonding line Bc

Sleeveless Coat
Back body
two sheets

Bonding line Bd



Children's

Bonding line DB

Bonding line DB

Bonding line Cc

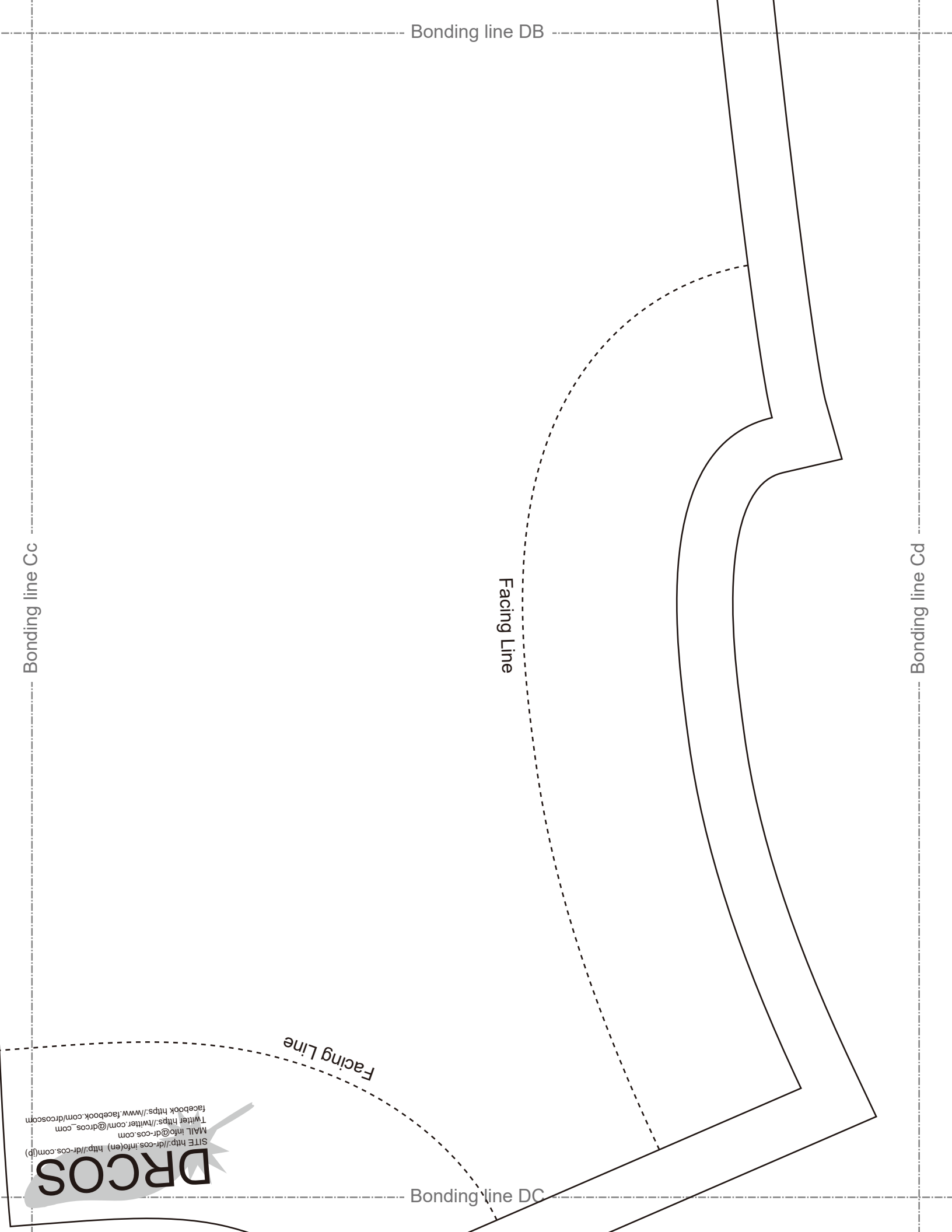
Bonding line Cd

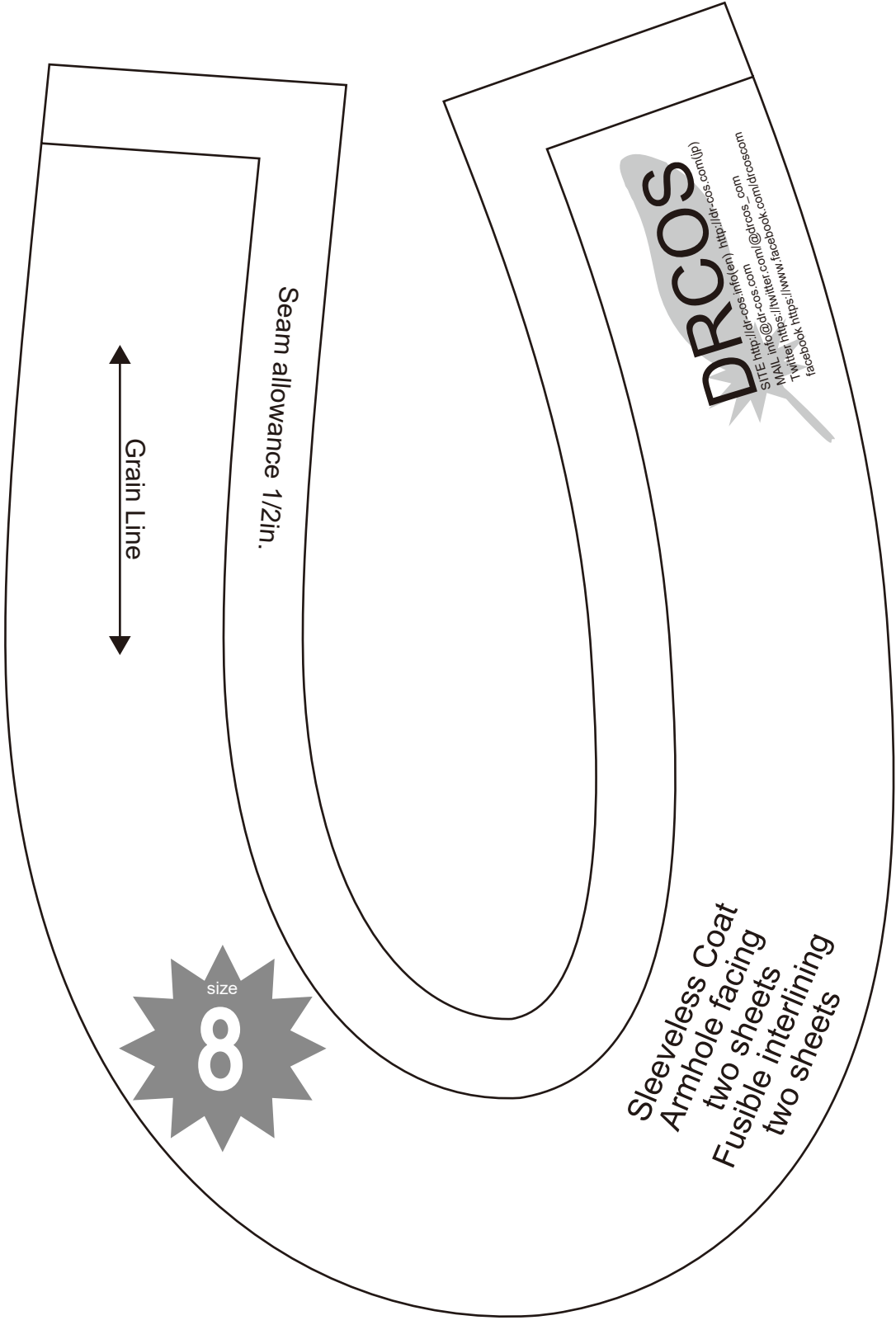
Facing Line

Facing Line

Bonding line DC

DRCOS
 SITE <http://dr-cos.info/en> <http://dr-cos.com/jp>
 MAIL info@dr-cos.com
 TWITTER https://twitter.com/dr-cos_com
 FACEBOOK <https://www.facebook.com/drcoscom>





Seam allowance 1/2in.

Grain Line

size
8

Sleeveless Coat
Armhole facing
two sheets
Fusible interlining
two sheets

DRCOS
 (http://drcos.com) <http://drcos.com>
 MAIL info@drcos.com @drcos_com
 Twitter <https://www.facebook.com/drcos.com>
 Facebook <https://www.facebook.com/drcos.com>