

**DRCOS**

SITE: <http://dr-cos.info/en> <http://dr-cos.com/jp>  
MAIL: [info@dr-cos.com](mailto:info@dr-cos.com)  
Twitter: <https://twitter.com/dr-cos>  
facebook: <https://www.facebook.com/drcoscom>

*Twice sewing*

Bonding line AA

Bonding line Aa

Bonding line AA

Bonding line Ba

Seam allowance 1/2in.

Bonding line AB

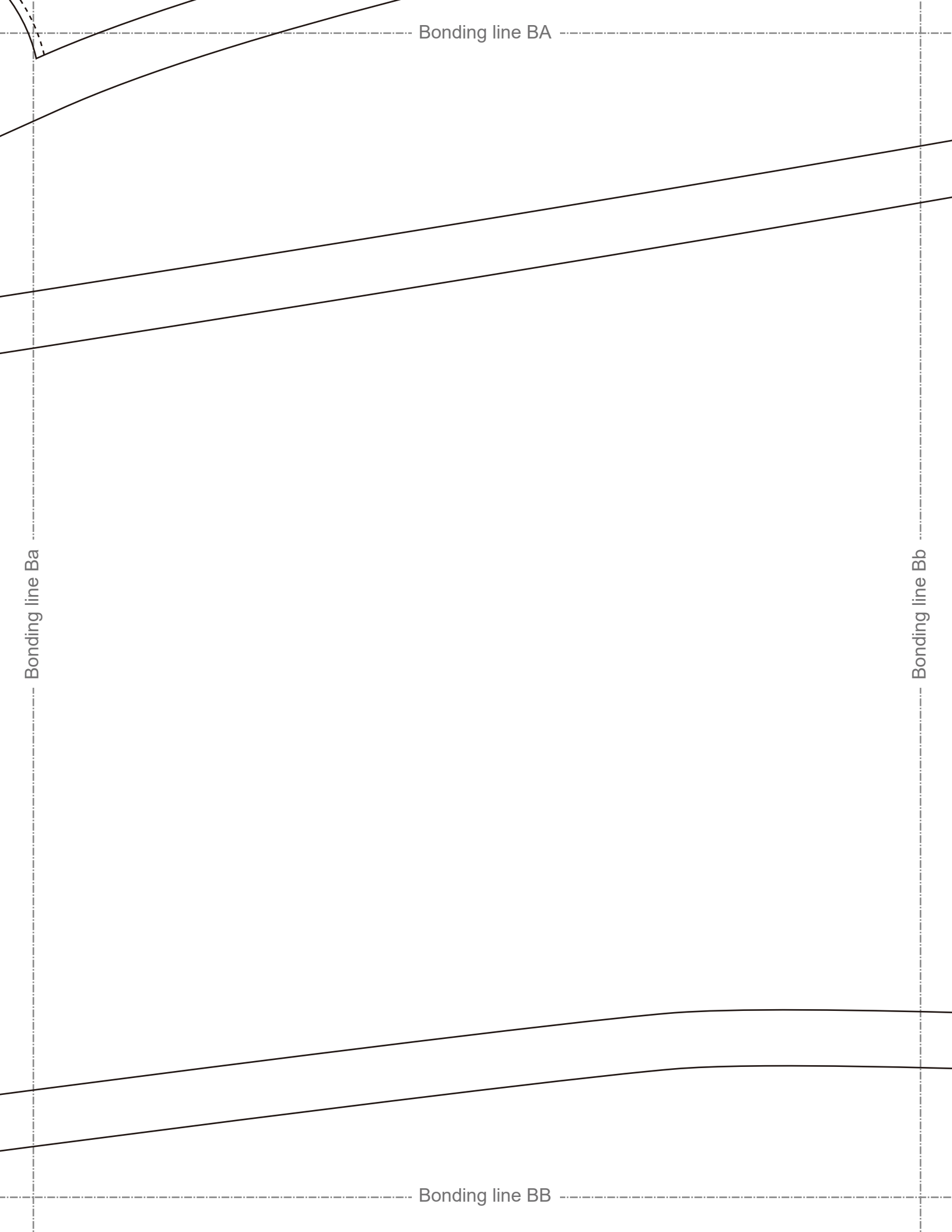
Bonding line Aa

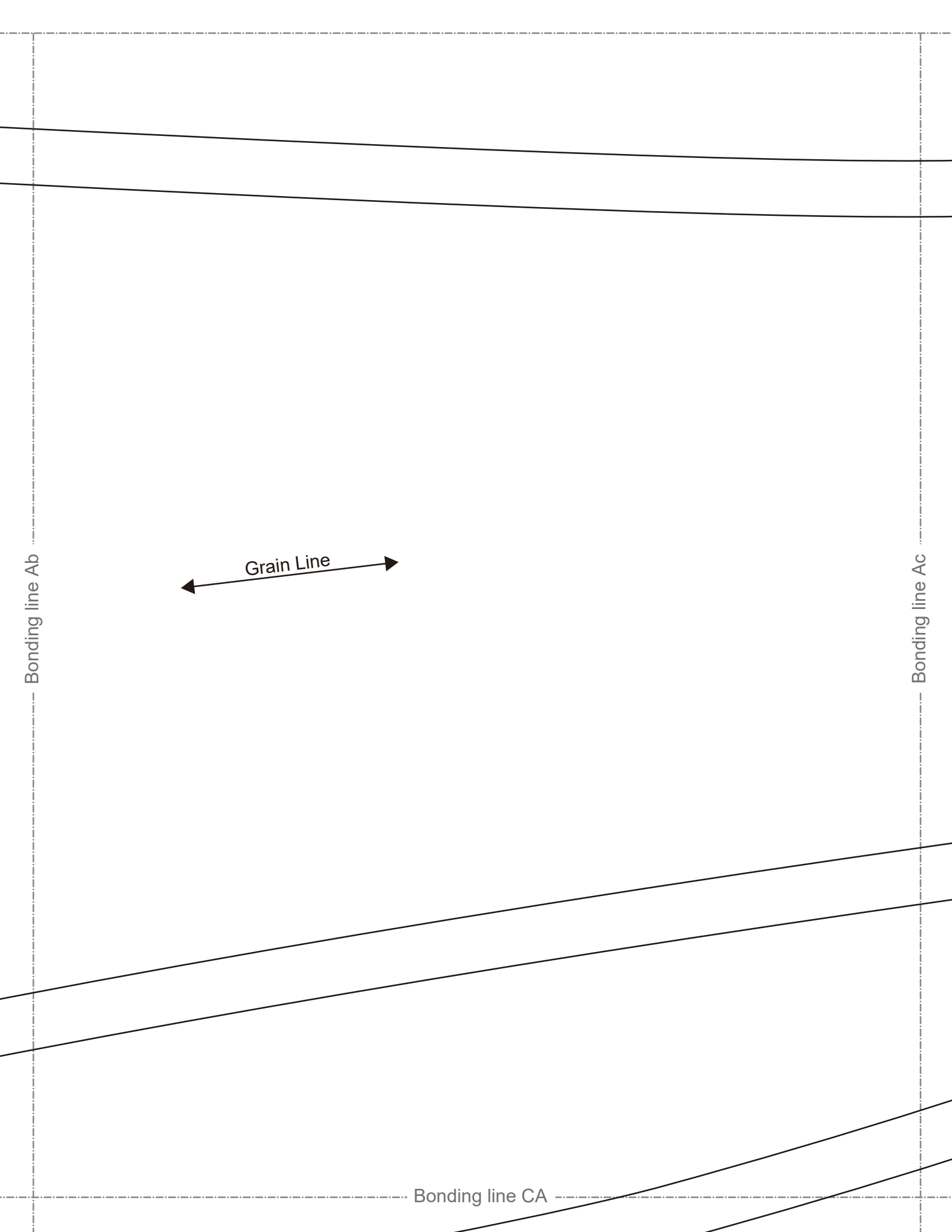
# LADIES'S size

Skinny pants  
Front Body  
two sheets

Bonding line Ab

Bonding line BA



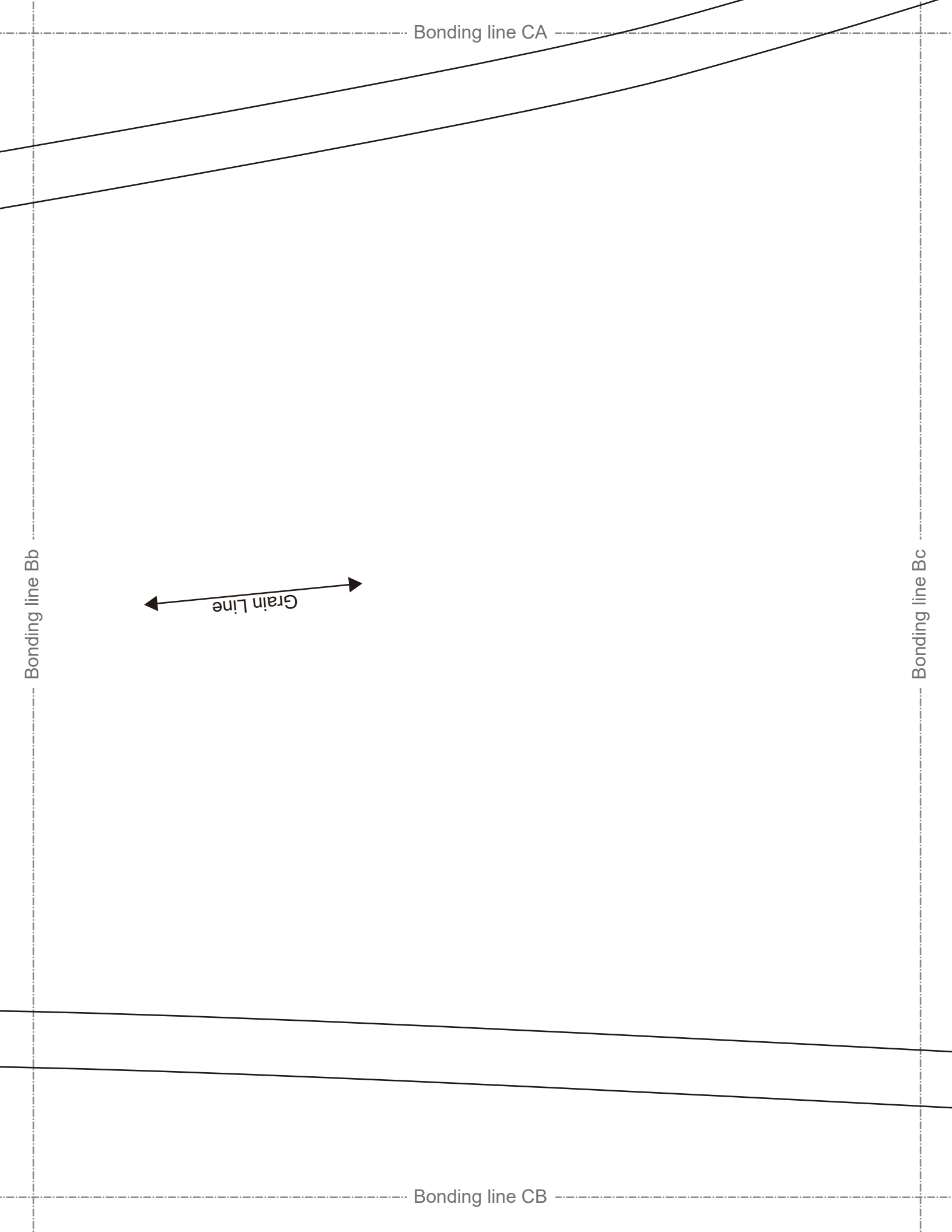


Bonding line Ab

Bonding line Ac

Grain Line

Bonding line CA

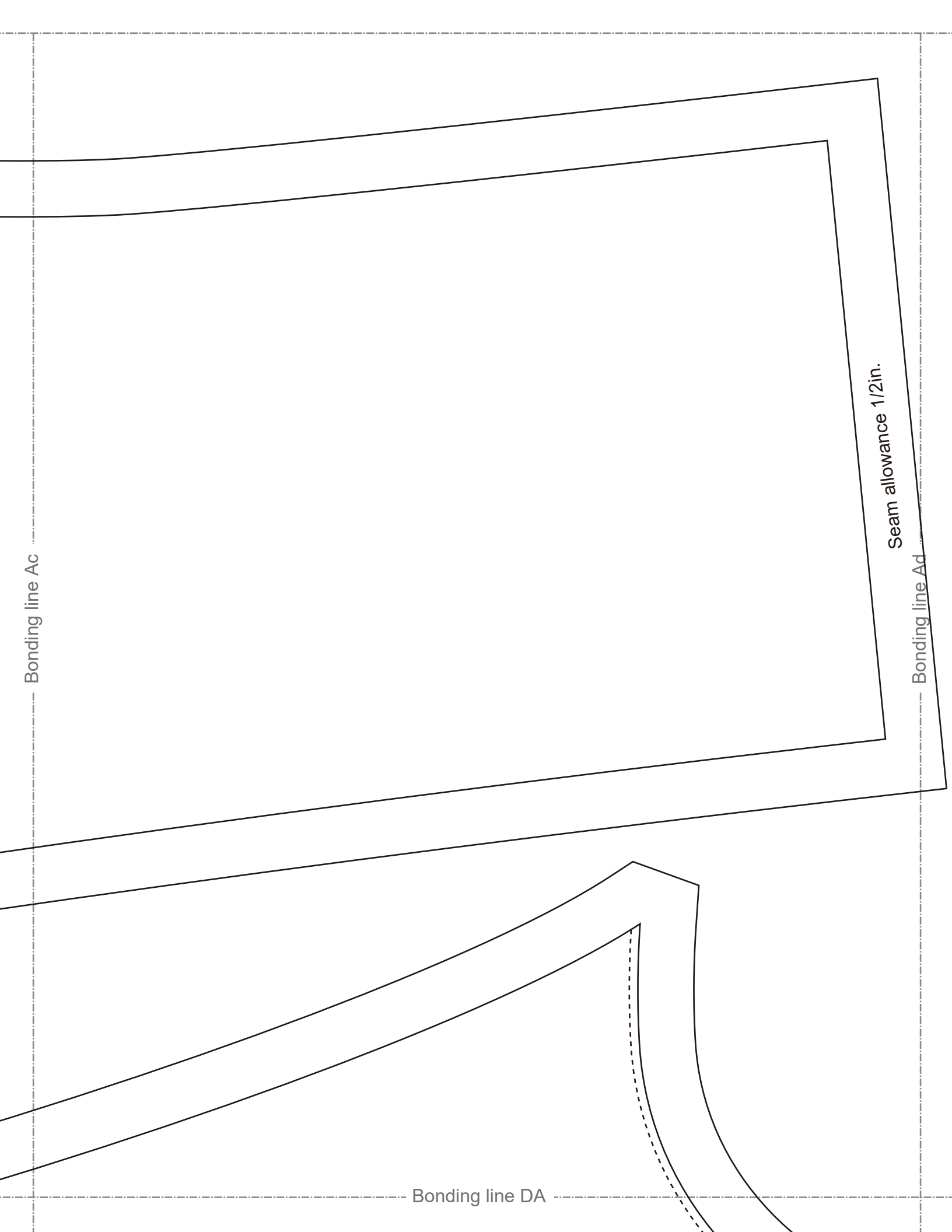


Bonding line Ac

Seam allowance 1/2in.

Bonding line Ad

Bonding line DA



Bonding line DA

Twice sewing

Bonding line Bc

Bonding line Bd

Skinny pants  
 Back Body  
 two sheets

# LADIES'S

size

# S

Bonding line DB



Seam allowance

Bonding line Ad

Bonding line EA

Seam allowance

two shear

Bonding line Ae



eu



two sheets  
Belt  
Skinny part

Bonding line Ae

Grain Line



Bonding line F

# LADIES

Bonding line Af

Bonding line Bf

**DRCOS**

SITE <http://dr-cos.info/en> | <http://dr-cos.com/pt>  
 MAIL [info@dr-cos.com](mailto:info@dr-cos.com)  
 Twitter <https://twitter.com/dr-cos>  
 facebook <https://www.facebook.com/dr-cos.com>



Bonding line F

Bonding line FB



Grommet position

ny pants  
Belt  
sheets

Bonding line Be