

Facing line

Pompon position

Bonding line AA

Bonding line Aa

Bonding line AA

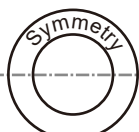


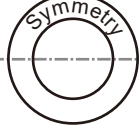
Bonding line Ba



# Children's <sup>size</sup> 10

Santa Dress  
Front Body  
one sheets





# Santa Dress Front Body one sheets

Bonding line Ca

**DRCC**

SITE [http://dr-cos.info\(en\)](http://dr-cos.info(en)) <http://dr-cos.com>  
MAIL [info@dr-cos.com](mailto:info@dr-cos.com)  
Twitter <https://twitter.com/dr-cos>  
facebook <https://www.facebook.com/dr-cos>

Seam allowance 1/2in.

Bonding line AC

Seam allowance 1/2in.

**DRCOS**  
SITE [http://drcos.info\(en\)](http://drcos.info/en) [http://drcos.com\(fp\)](http://drcos.com(fp))  
MAIL [info@drcos.com](mailto:info@drcos.com)  
Twitter [https://twitter.com/drcos\\_com](https://twitter.com/drcos_com)  
facebook <https://www.facebook.com/drcoscom>

Bonding line Aa

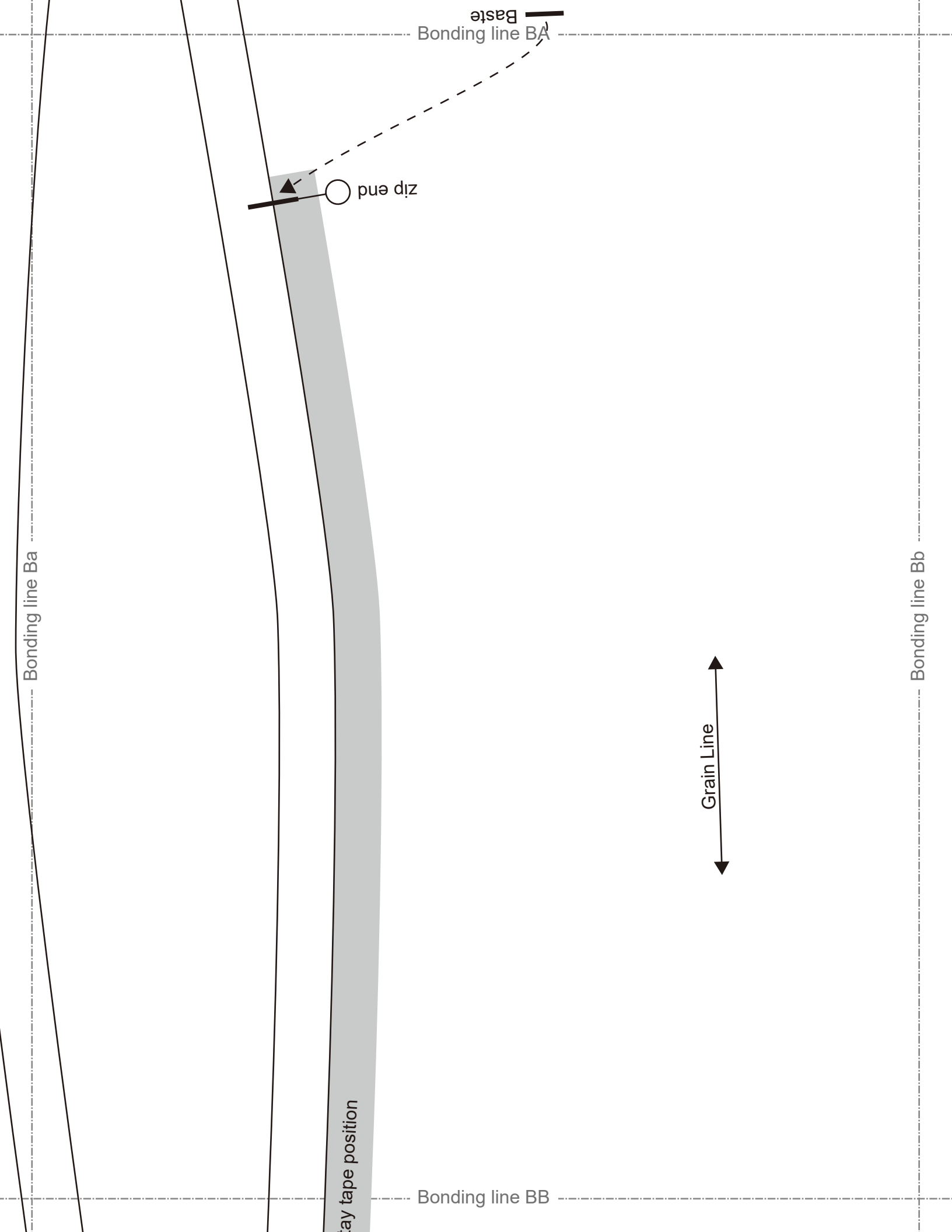
Bonding line Ab

Santa Dress  
Back Body  
two sheets

# Children's

size 10

Baste  
Bonding line BA



**RCOS**

rcos.info(en) [http://dr-cos.com\(jp\)](http://dr-cos.com(jp))  
-cos.com  
/twitter.com/@drcos\_com  
s://www.facebook.com/drcoscom

Bonding line Ca

stay tape

Bonding line BB

Bonding line Cb

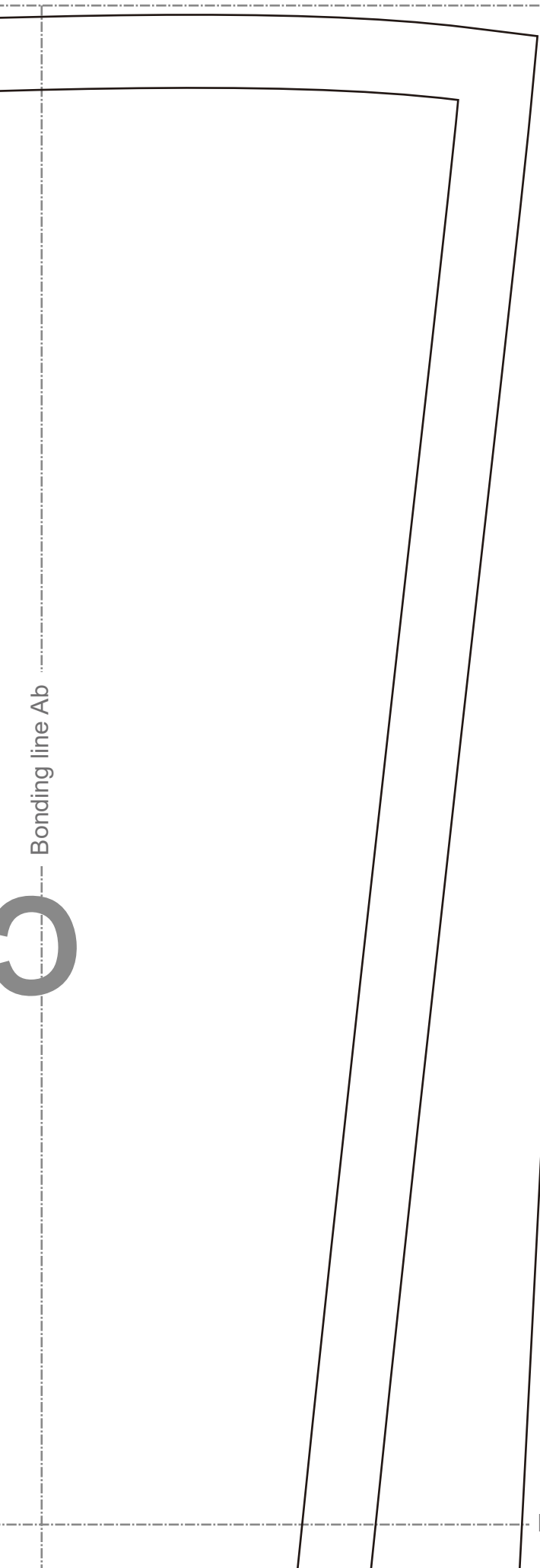
Facing line

Bonding line BC

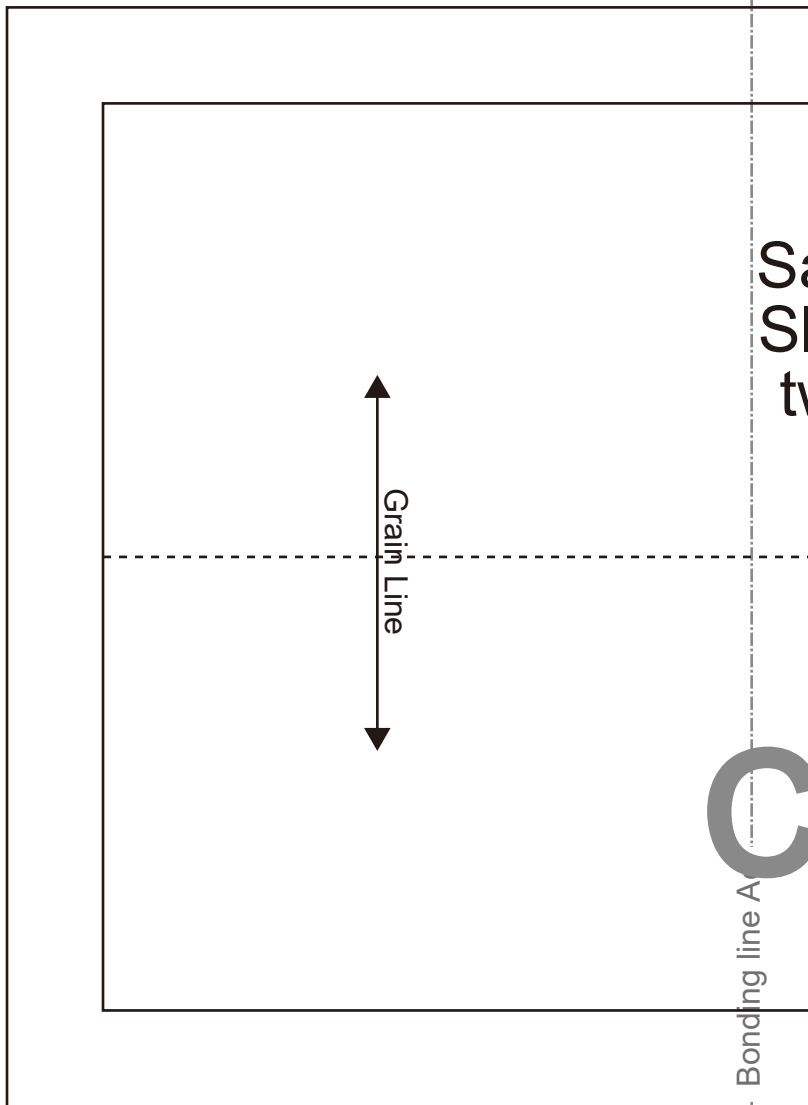




Bonding line Ab



Bonding line CA



Bonding line A

St  
St  
ty

Bonding line Bb

Bonding line CA

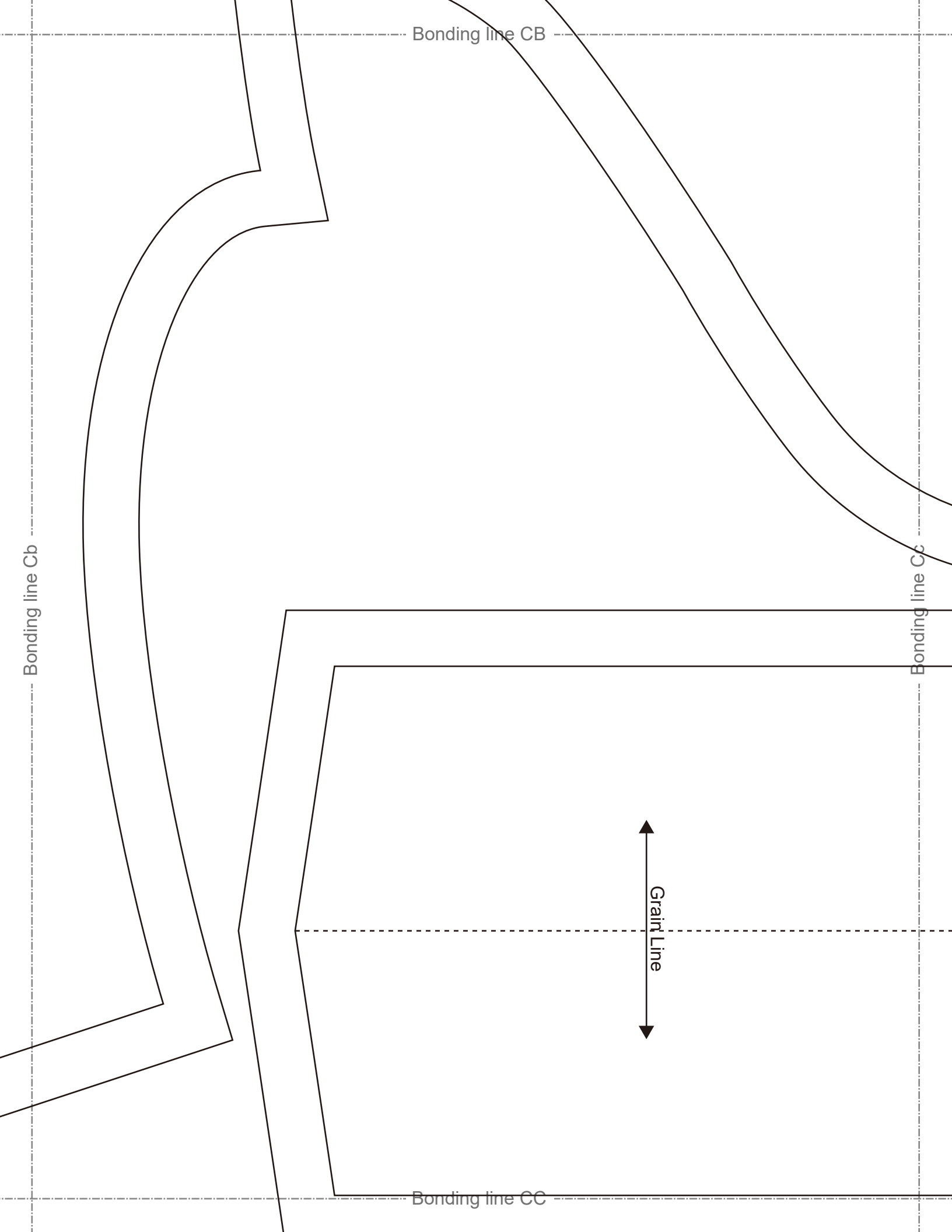
Bonding line Bc



Front

Bonding line CB





Bonding line CC

# Children's

Grain Line

Santa Dress  
Back hem  
two sheets

Seam allowance 1/2in.

Bonding line Db

Bonding line Dc

Santa Dress  
collar  
one sheets

Grain Line

# Chi

Seam

Bonding line CD

Santa Dress  
Sleeve cuffs  
two sheets

**DRCOS**

SITE <http://dr-cos.info/en> <http://dr-cos.com/jp>  
MAIL [info@dr-cos.com](mailto:info@dr-cos.com)  
Twitter [https://twitter.com/drcos\\_com](https://twitter.com/drcos_com)  
facebook <https://www.facebook.com/drcoscom>

Children's **10**  
size

Seam allowance 1/2in.

Seam allowance 1/2in.

Grain Line

Bonding line DA

Bonding line A

Bonding line Ad



Santa Dress  
Sleeve  
two sheets

Grain  
↓

Bonding line DA

Bonding line Bc

Bonding line Bd

Back

Bonding line DB

Bonding line DB

[SITE http://dr-cos.com](http://dr-cos.com)  
[MAIL info@dr-cos.com](mailto:info@dr-cos.com)  
[Twitter https://twitter.com/dr-cos\\_com](https://twitter.com/dr-cos_com)  
[facebook https://www.facebook.com/drcoscom](https://www.facebook.com/drcoscom)

**DRCOS**

Bonding line Cc

Bonding line Cd

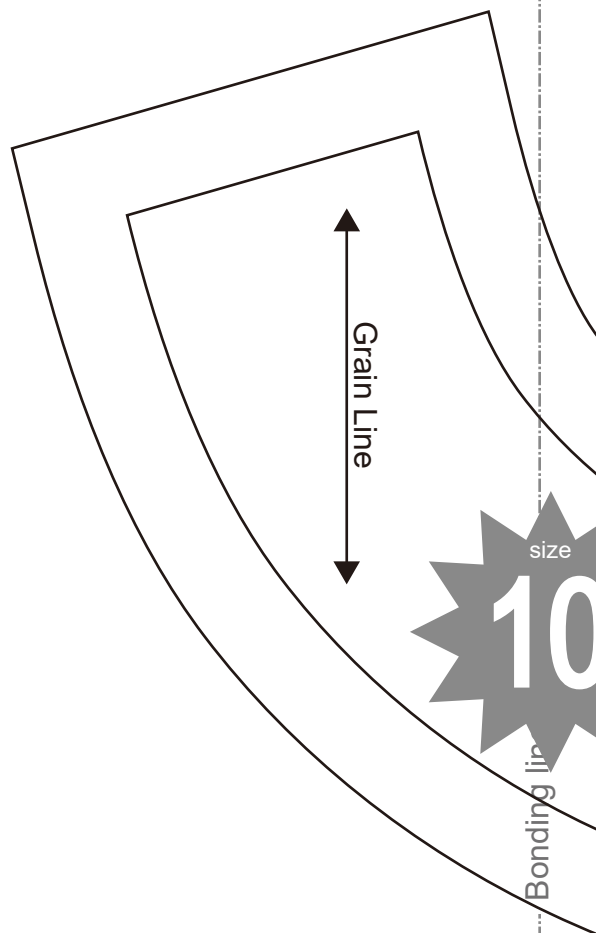
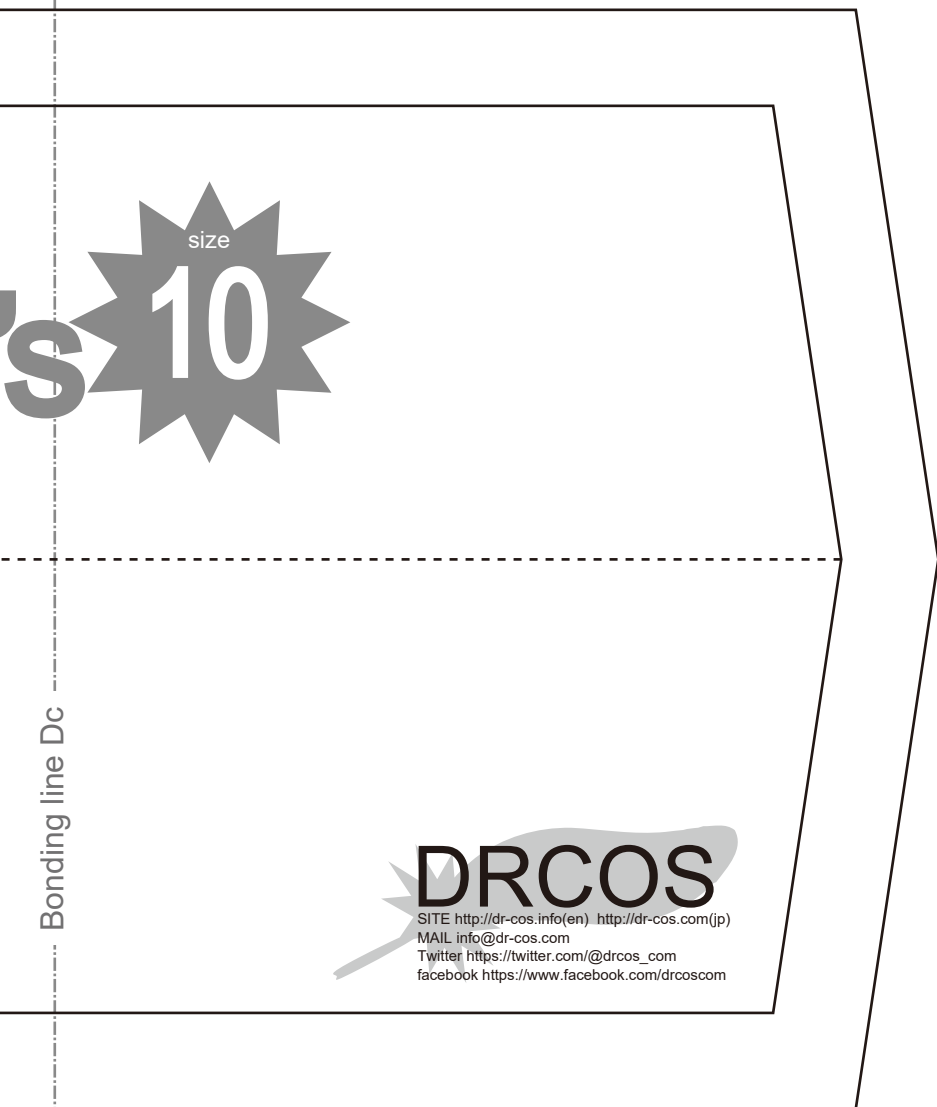
# Children's <sup>size</sup> 10

Santa Dress  
 Front hem  
 one sheets

Bonding line DC

Seam allowance 1/2in.

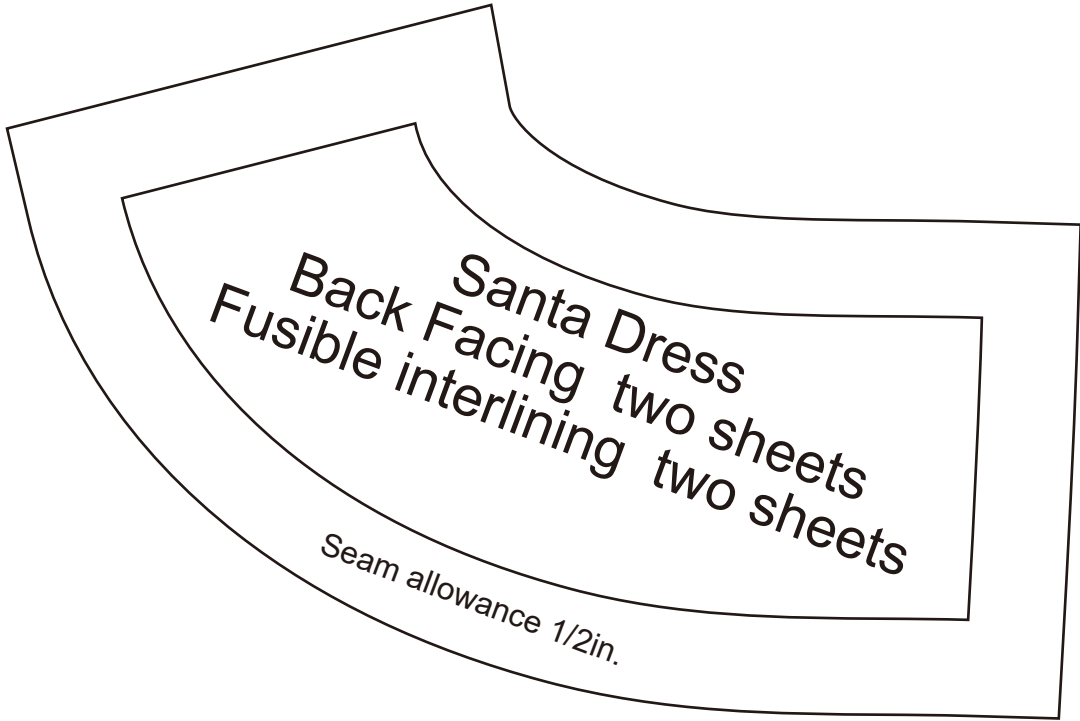
Bonding line DC  
Seam allowance 1/2in.



Seam allowance 1/2in.

Bonding line DD

Bonding line EB



Bonding line Cd

Bonding line Ce

**DRCOS**

SITE [http://dr-cos.info\(en\)](http://dr-cos.info(en)) [http://dr-cos.com\(jp\)](http://dr-cos.com(jp))  
MAIL [info@dr-cos.com](mailto:info@dr-cos.com)  
Twitter [@drcos\\_com](https://twitter.com/@drcos_com)  
facebook <https://www.facebook.com/drcoscom>

Bonding line EC

**DRCOS**  
SITE: <http://drcos.info/en/> <http://drcos.com/jp/>  
MAIL: [info@drcos.com](mailto:info@drcos.com)  
Twitter: <https://twitter.com/drcos>  
facebook: <https://www.facebook.com/drcos.com>

Santa Dress  
Front Facing one sheets  
Fusible interlining one sheets

Seam allowance 1/2in.

size

10

Bonding line

Bonding line De

S

bs.com(jp)

m  
drcos.com