

DRCOS
SITE [https://drcos.info\(en\)](https://drcos.info/en) [https://drcos.com\(jp\)](https://drcos.com/jp)
MAIL info@drcos.com
Twitter https://twitter.com/drcos_com
Pinterest <https://www.pinterest.jp/drcosinfo>

Stitch

Bonding line Aa

Bonding line AA

Bonding line AA

Bonding line Ba



DRCOS
SITE <https://dr-cos.info/en/> <https://dr-cos.com/jp/>
MAIL info@dr-cos.com
TWITTER <https://twitter.com/dr-cos>
PINTEREST <https://www.pinterest.jp/dr-cos/info>

Fly Extension Position

Bonding line AB

Bonding line AB

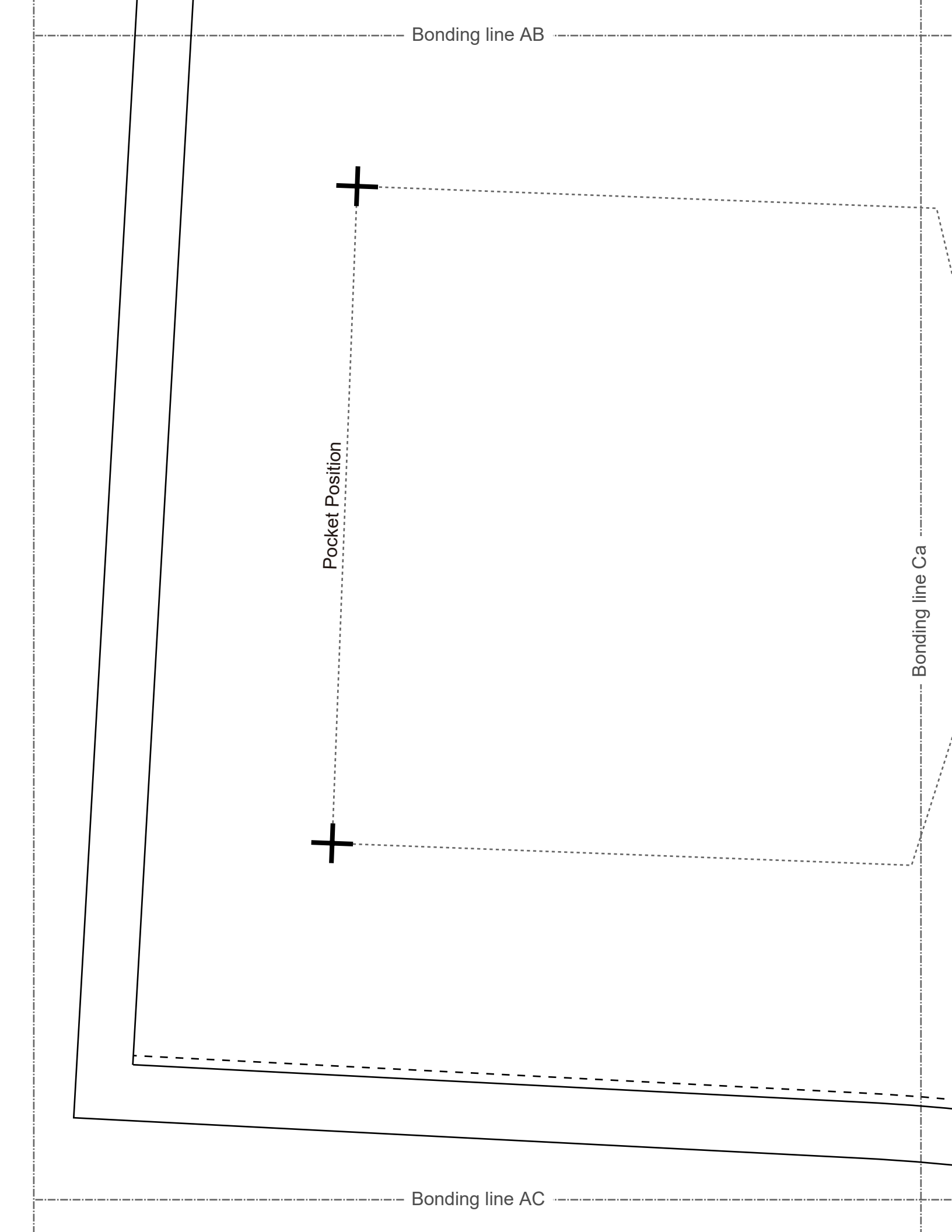


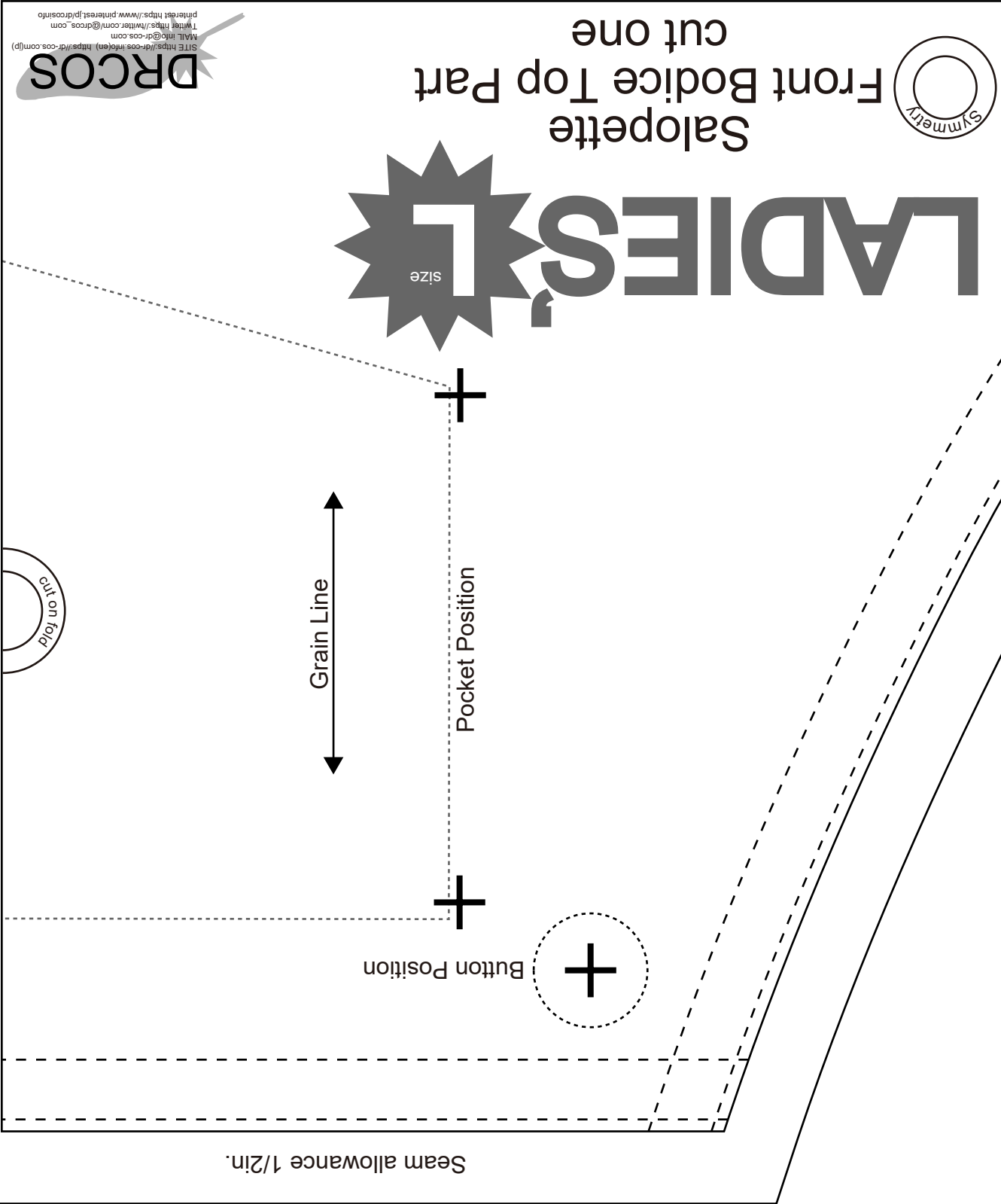
Pocket Position



Bonding line Ca

Bonding line AC





alopette
Slider Strap
cut two

Seam allowance 1/2in.

Bonding line Aa

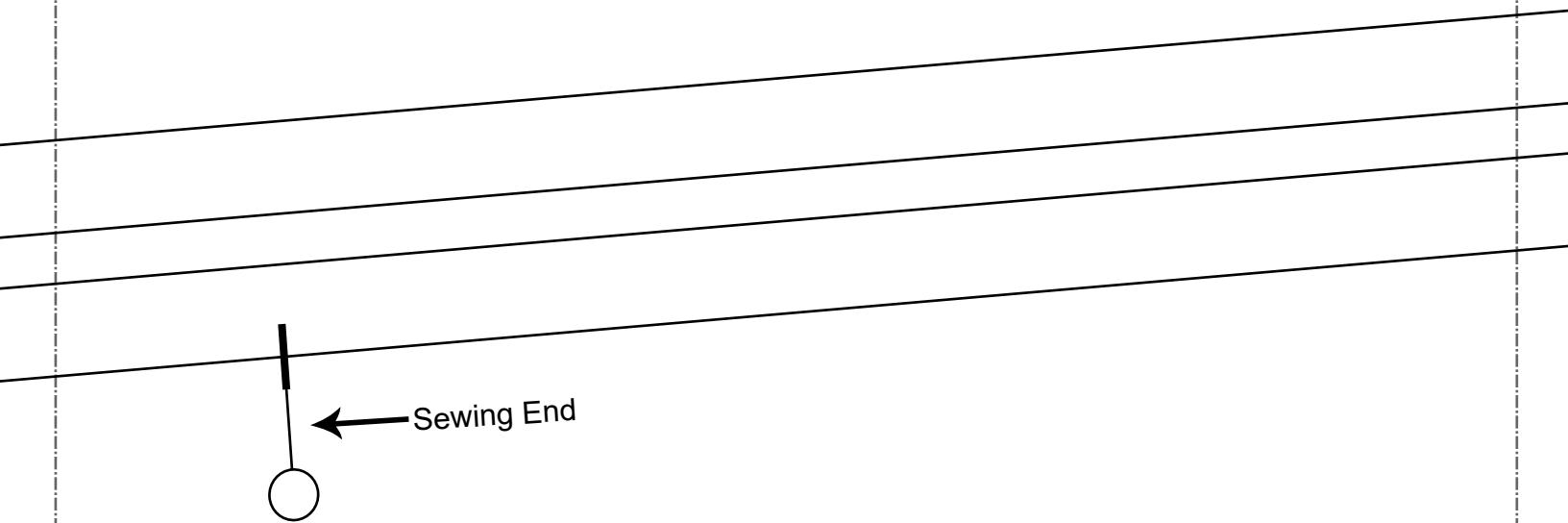
Bonding line Ab

Bonding line BA

Bonding line BA

Bonding line Ba

Bonding line Bb



Bonding line BB

Bonding line BB

Bonding line Ca

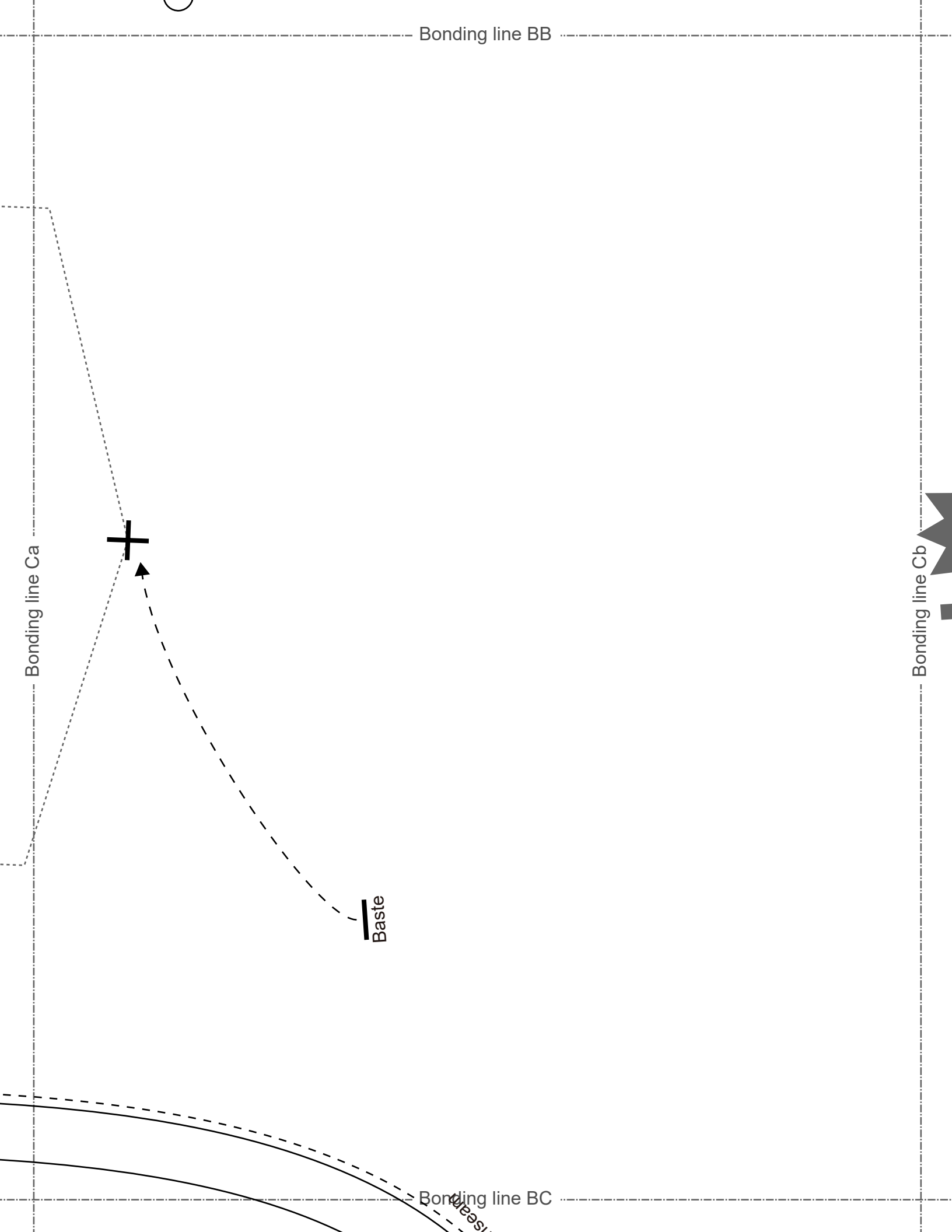
Bonding line Cb

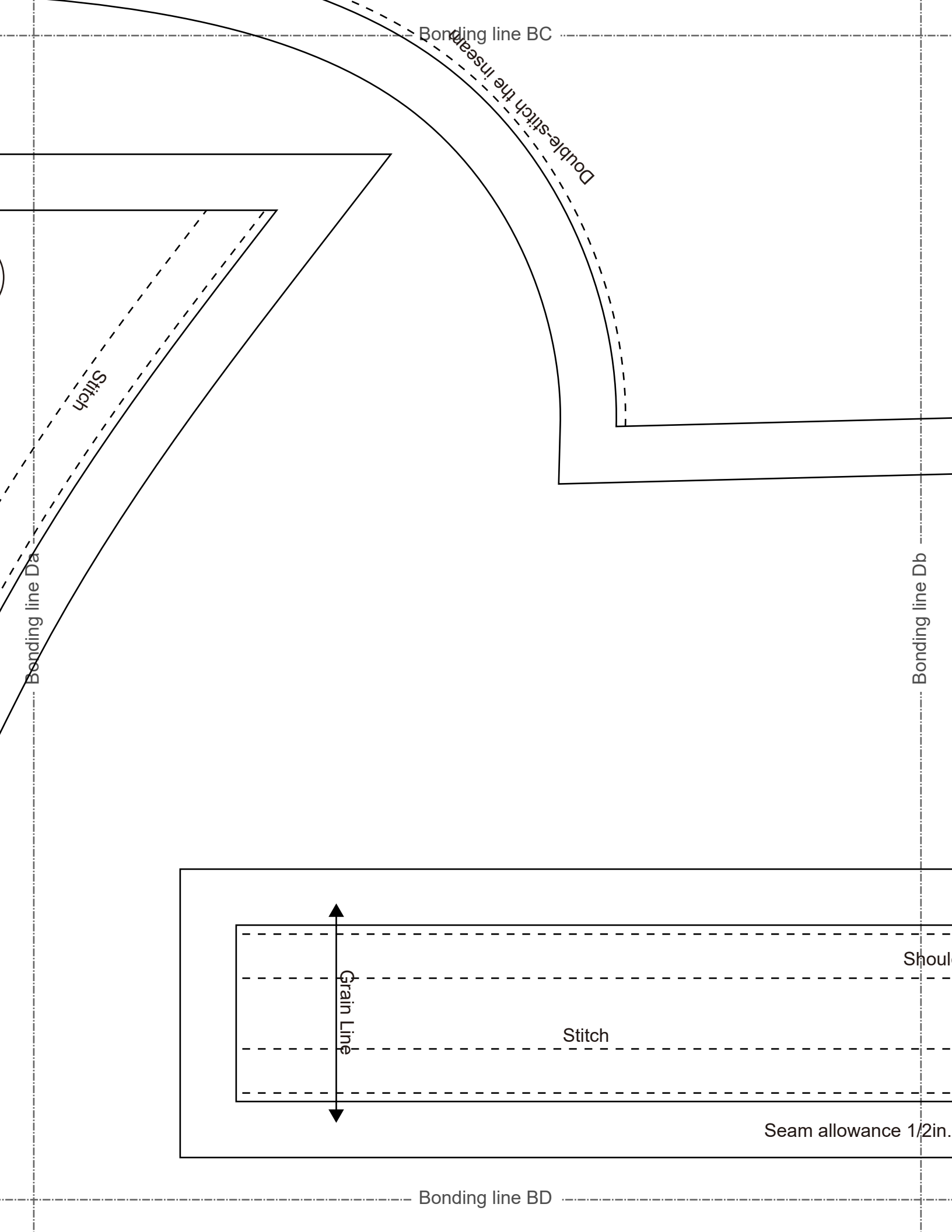


Baste

Bonding line BC

sees





Salop
Shoulder
cut t



Seam allowance 1/2in.

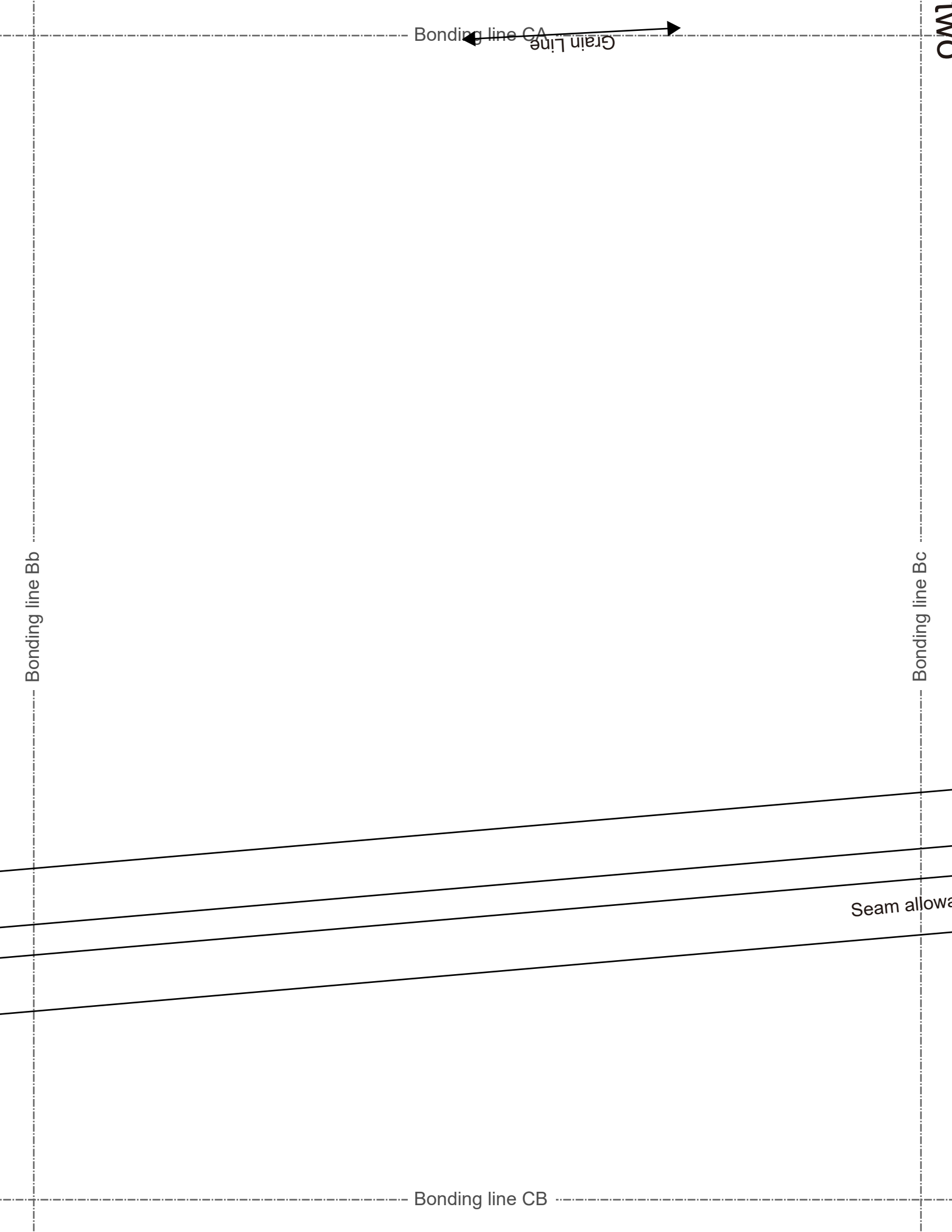
Bonding line Ab

Bonding line Ac

Bonding line CA

Grain Line

CUT TWO



Bonding line CA



Grain Line

Bonding line Bb

Bonding line Bc

Bonding line CB

Seam allowance

Bonding line CB

Bonding line Cb

LADIES' ^{size} L

Salopette
Back Bodice
cut two

Bonding line CC

Bonding line Cc

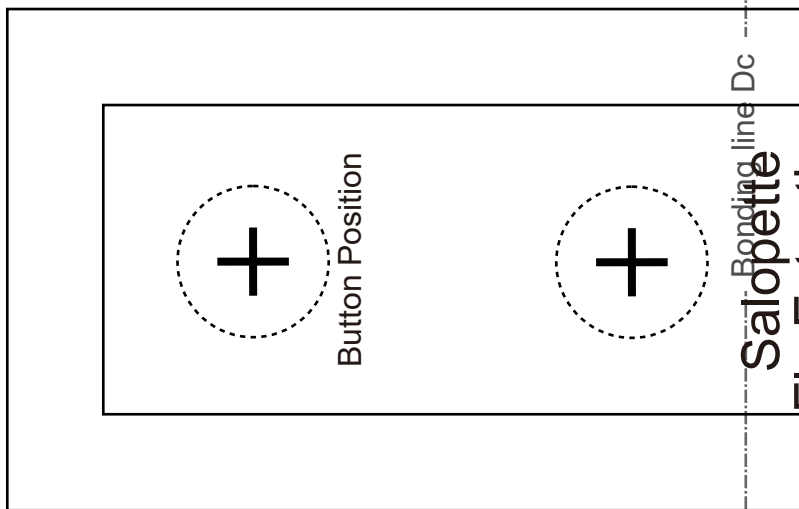


Grain

Bonding line CC

Bonding line Db

Bonding line Dc



Shoulder Strap Position

Insert

Shoulder Strap Position

Salopette
Back Waist Band
cut two

LAD

1/2in.

Insert

Bonding line CD

Bonding line Ac

Bonding line Ad

Salopette
Front Bodi
cut two

LADIES

Bonding line DA

LADIES
size

ette
odice
two



Bonding line DA

Bonding line Bc

Bonding line Bd
wea

m allowance 1/2in.

Bonding line DB

Bonding line DB

Bonding line Cc

Grain Line



Bonding line Cd

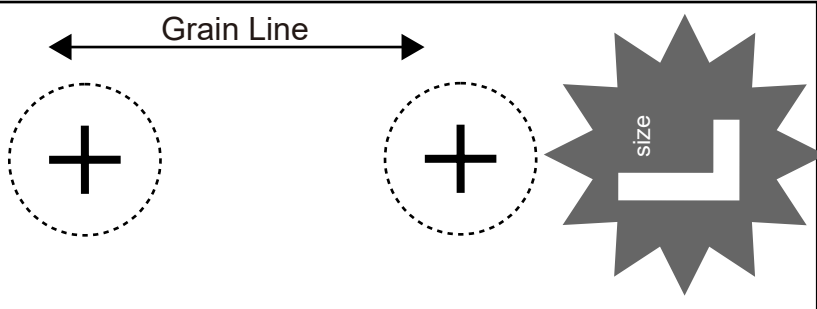
Bonding line DC

Bonding line Dc

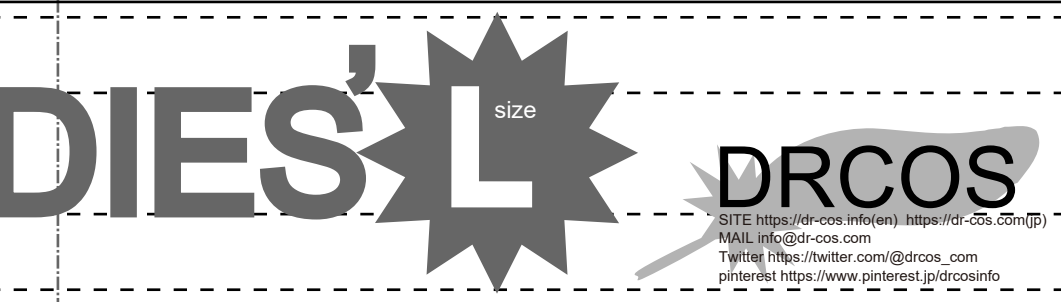
Saiolette

Fly Extension

cut two



Bonding line Dd



Bonding line Ad

Bonding line Ae

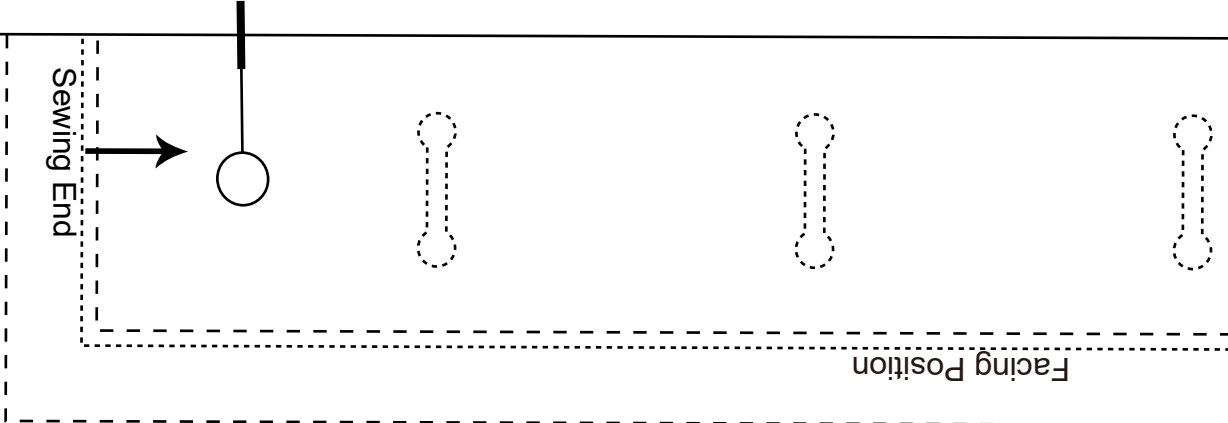
Bonding line EA

Grain Line

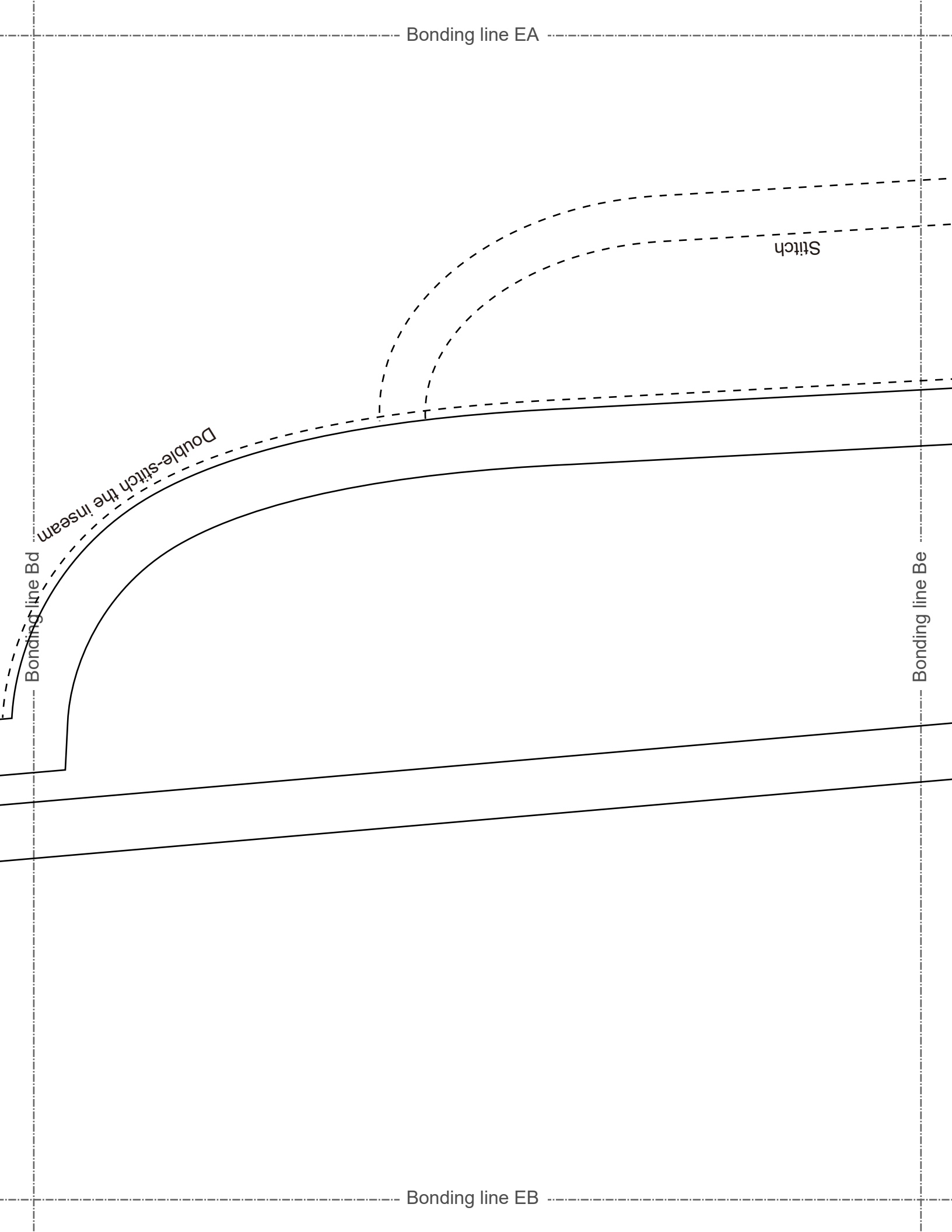
Sewing End

Facing Position

Stitch



Bonding line EA



Stitch

Double-stitch the inseam

Bonding line Bd

Bonding line Be

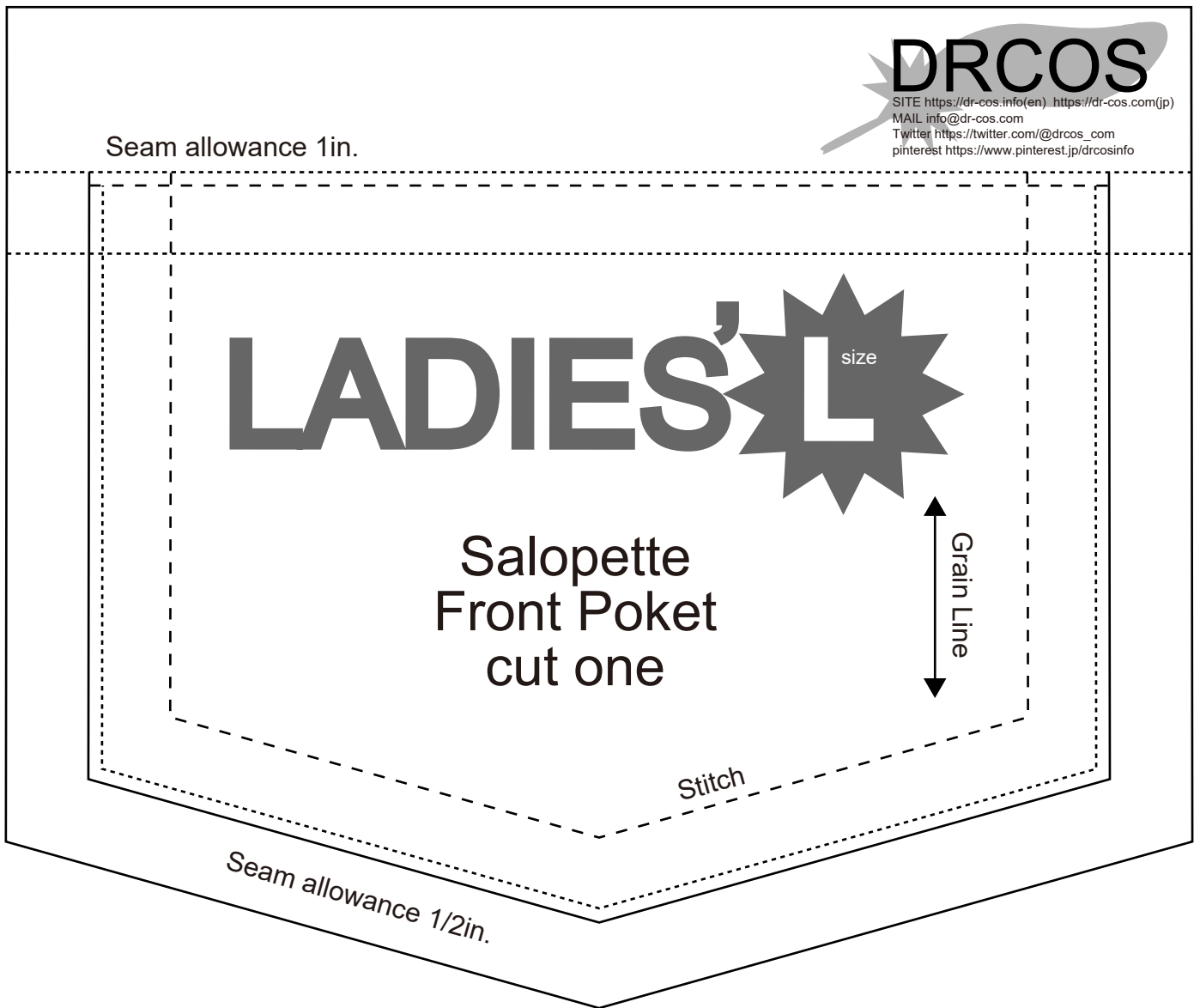
Bonding line EB

Bonding line EB

Bonding line Cd

Bonding line Ce

Bonding line EC



Grain Line

Stitch

Salopette
Front Waist Band
cut two

Seam allowance 1/2in.

Insert

Bonding line FA

Insert

Buttonhole Position



Bonding line Ae

Bonding line Be

Bonding line FA

Insert

Insert

DRCOS

SITE <https://dr-cos.info/en> <https://dr-cos.com/jp>
MAIL info@dr-cos.com
Twitter <https://twitter.com/dr-cos>
Pinterest <https://www.pinterest.jp/drcosinfo>

DRCOS

SITE <https://dr-cos.jp/en> <https://dr-cos.com/jp>
MAIL info@dr-cos.com
Twitter <https://twitter.com/dr-cos>
Pinterest <https://www.pinterest.jp/drcosinfo>

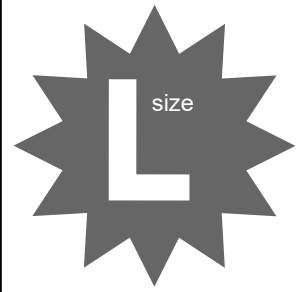
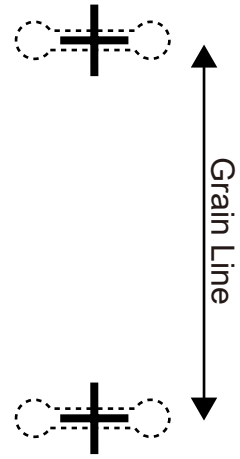
LADIES'  size

Bonding line FB

Bonding line Ce

Bonding line FB


Salopette
Facing
cut two



Bonding line FC

Bonding line FC

Bonding line De

Seam allowance 1/2in.

Stitch

LADIES' **L**^{size}

Grain Line

Salopette
Back Pocket
cut two

DRCOS

SITE <https://dr-cos.info/en> <https://dr-cos.com/jp>
MAIL info@dr-cos.com
Twitter https://twitter.com/drcos_com
Pinterest <https://www.pinterest.jp/drcosinfo>

Bonding line FD