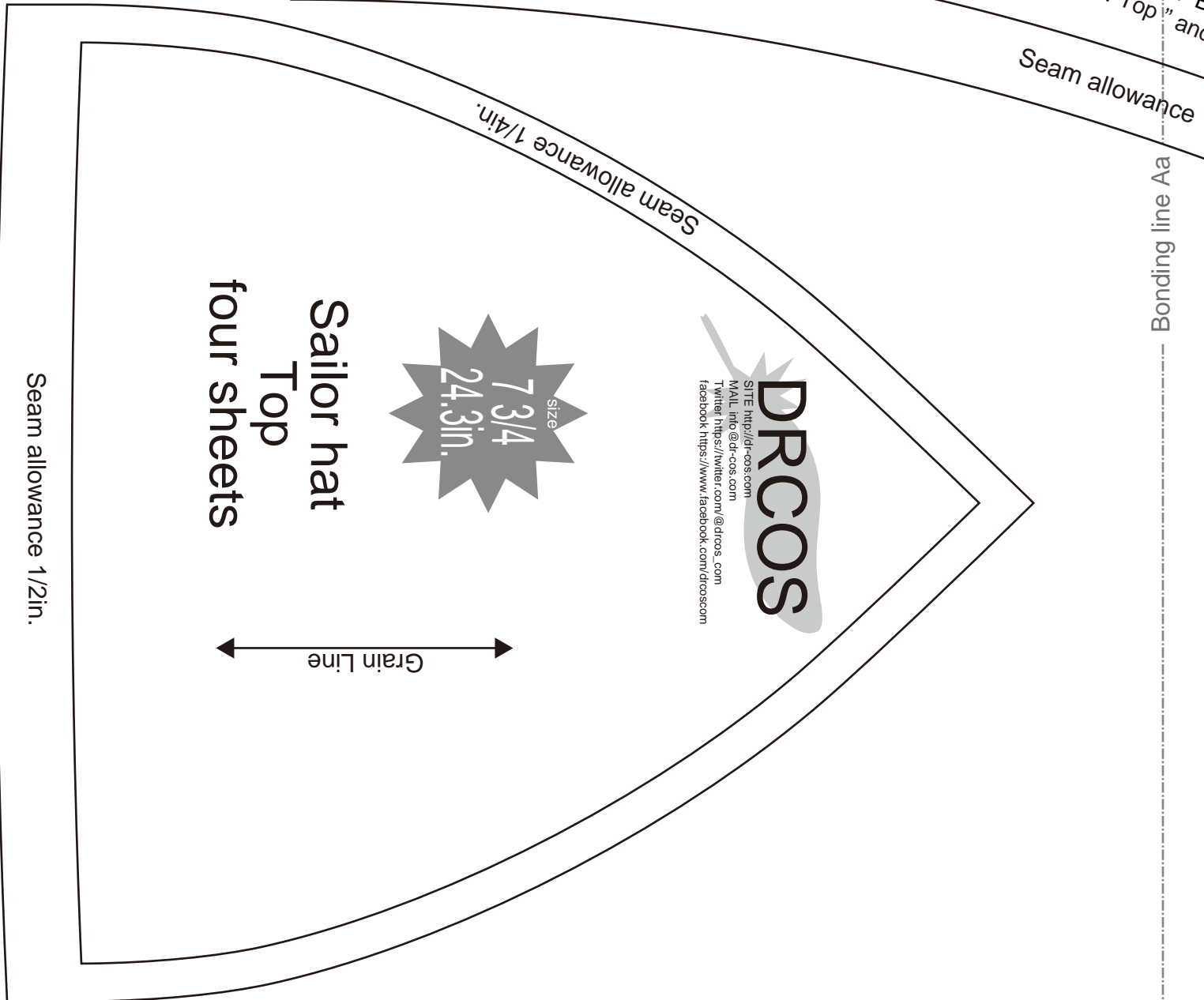
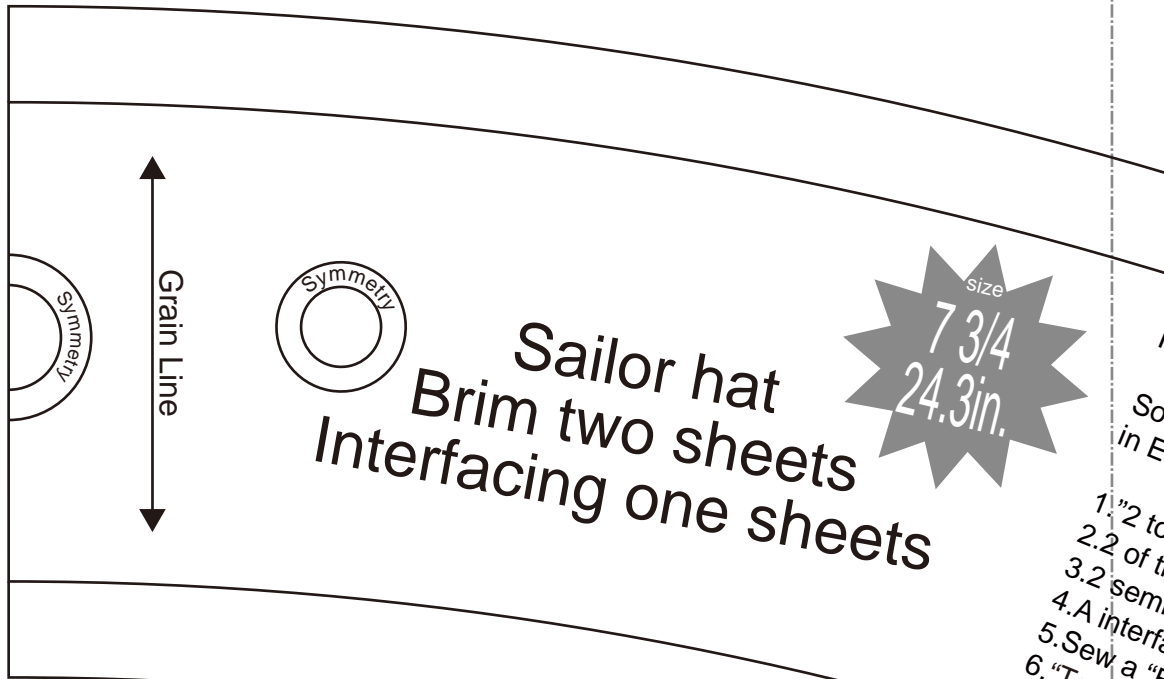


[Home](#)
[Back to Sailorhat page](#)



Bonding line AA

How to make

Sorry if I haven't made myself understood (well) in English. You know I'm poor at English.

- 1. "2 tops" are sewn, press seam allowances open
 - 2. 2 of the same one is made
 - 3. 2 semicircles is sewn, press seam allowances open
 - 4. A interfacing is stuck on a brim.
- Sew a "Brim" and make it annular. (two sheets)
"Top" and "Brim" are sewn up
allowance 1/2in.



Bonding line Aa

Bonding line Ab

Bonding line BA