

Children's **8**

size

Bonding line Aa

Bonding line AA

Sailorcollarblouse
Collar line
one sheets

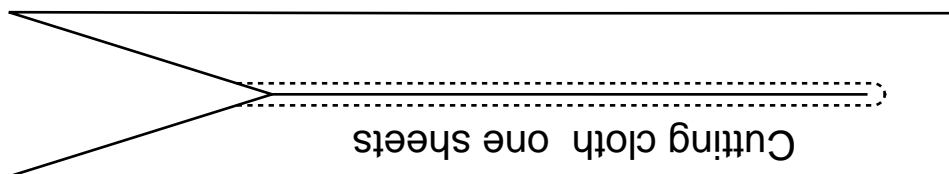
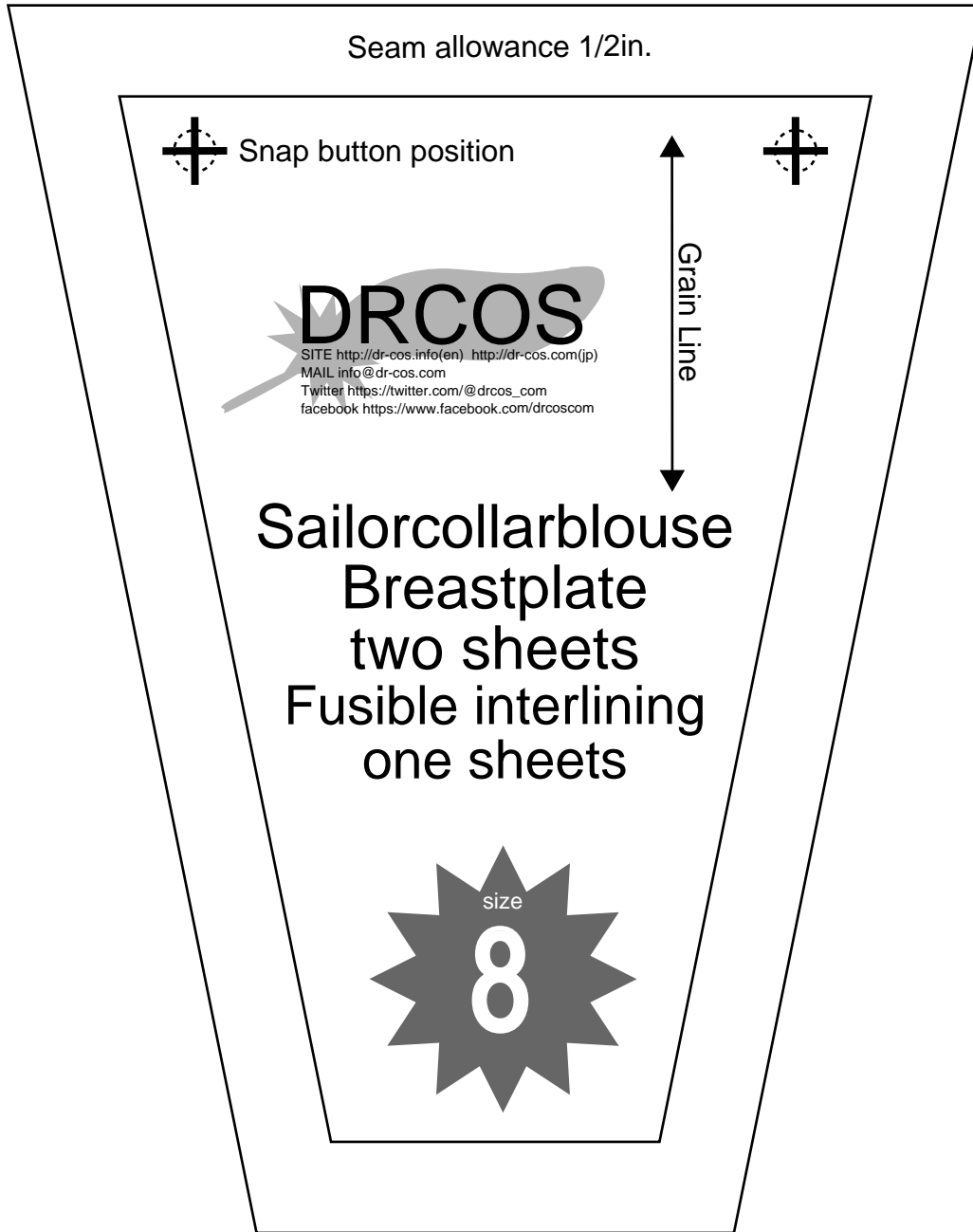
Sailorcollarblouse
Collar
Fusible interlining
two sheets
one sheets

Seam allowance 1/2in.

Grain Line

Cut

Seam allowance 1/2in.



Size 8

Children's

Collar line position

Grain Line

DRCOS
SITE <http://dr-cos.info/en> <http://dr-cos.com/jp>
MAIL info@dr-cos.com
Twitter [@drcos.com](https://twitter.com/@drcos.com)
facebook <https://www.facebook.com/drcos.com>

Bonding line Aa

Bonding line Ab

Size

Back

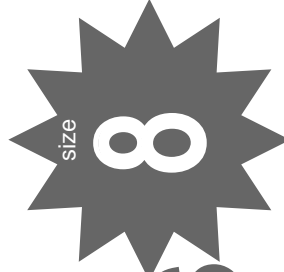
Bonding line BA

Bonding line Ba

Bonding line BA

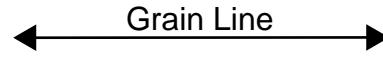
DRCOS

SITE <http://dr-cos.info/en> <http://dr-cos.com/jp>
MAIL info@dr-cos.com
Twitter [@drcos_com](https://twitter.com/@drcos_com)
facebook <https://www.facebook.com/drcoscom>



Children's

Sailorcollarblouse
Sleeve
two sheets



Front

Seam allowance 1/2in.

Bonding line Bb

Bonding line BB

Bonding line Ab

Bonding line Ac

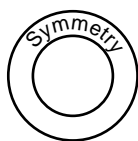
darts

Baste

Children's **8**
size

Bonding line CA

Bonding line CA



Sailorcollarblouse Back Body one sheets



Seam allowance 1/2in.



Bonding line Bb

Bonding line Bc

DRCOS

SITE [http://dr-cos.info\(en\)](http://dr-cos.info(en)) [http://dr-cos.com\(jp\)](http://dr-cos.com(jp))

MAIL info@dr-cos.com

Twitter https://twitter.com/@drcos_com

facebook <https://www.facebook.com/drcoscom>

Bonding line CB

Bonding line Ac

Bonding line Ad

DRCOS

SITE [http://dr-cos.info\(en\)](http://dr-cos.info(en)) [http://dr-cos.com\(jp\)](http://dr-cos.com(jp))
MAIL info@dr-cos.com
Twitter https://twitter.com/drcos_com
facebook <https://www.facebook.com/drcoscom>

Snap button position



Collar position

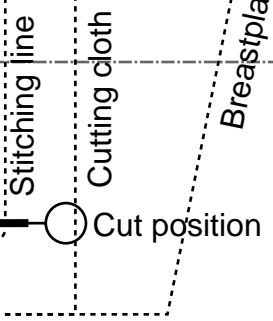
Breastplate position

ing cloth position

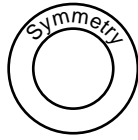
ing line

Bonding line DA

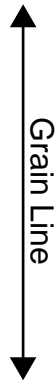
Bonding line DA



Children's ^{size} 8



Sailorcollarblouse
Front Body
one sheets



Seam allowance 1/2in.

Bonding line Bc

Bonding line Bd

Bonding line DB