

**DRCOS**

SITE <http://dr-cos.info/en> <http://dr-cos.com/jp>  
MAIL [info@dr-cos.com](mailto:info@dr-cos.com)  
Twitter [https://twitter.com/dracos\\_com](https://twitter.com/dracos_com)  
facebook <https://www.facebook.com/dracoscom>



**DRCOS**

SITE <http://dr-cos.info/en> <http://dr-cos.com/jp>  
MAIL [info@dr-cos.com](mailto:info@dr-cos.com)  
Twitter [https://twitter.com/dracos\\_com](https://twitter.com/dracos_com)  
facebook <https://www.facebook.com/dracoscom>



Button position



Collar position



Bonding line AA

Bonding line Aa

LADIES'S  
size

Bonding line AA

LADIES'S  
size

Ruffle Blouse  
Chest ruffle (top)  
Two sheets



Bonding line AB

Bonding line Ba

3fold double turn

# Ruffle Blouse Chest ruffle (bottom) Two sheets

gather

Seam allowance 1/2in.

Bonding line AC

Bonding line AB

3fold double turn

gather

Seam allowance 1/2in.

Bonding line Ca

SS

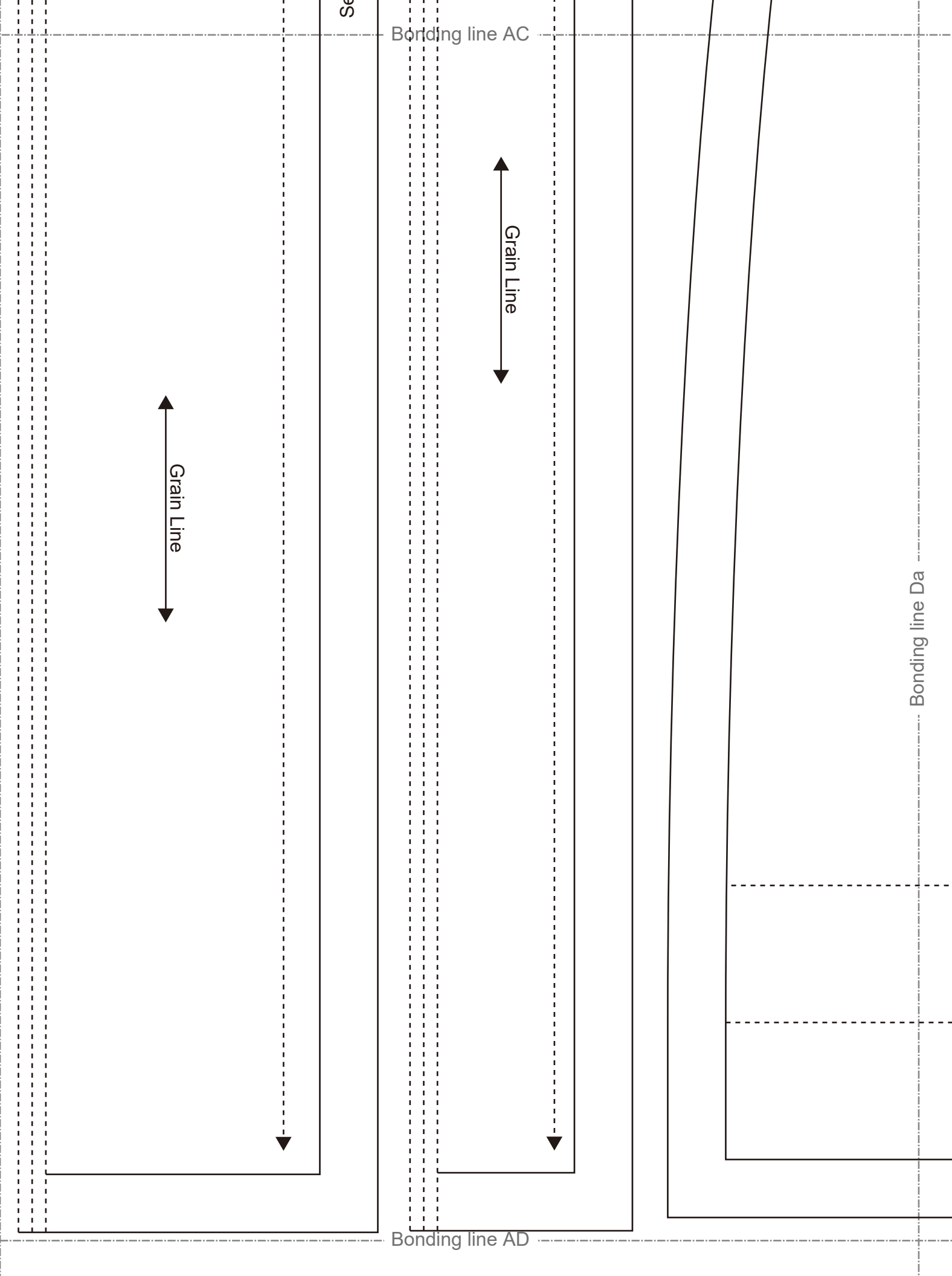
Bonding line AC

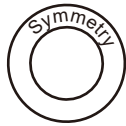
Grain Line

Grain Line

Bonding line Da

Bonding line AD





Ruffle Blouse  
Neck Band  
two sheets  
Fusible interlining  
one sheets

**DRCOS**

SITE <http://dr-cos.info/en> <http://dr-cos.com/jp>  
MAIL [info@dr-cos.com](mailto:info@dr-cos.com)  
Twitter [https://twitter.com/@drcos\\_com](https://twitter.com/@drcos_com)  
facebook <https://www.facebook.com/drcoscom>

Grain Line



Seam allowance 1/2in.

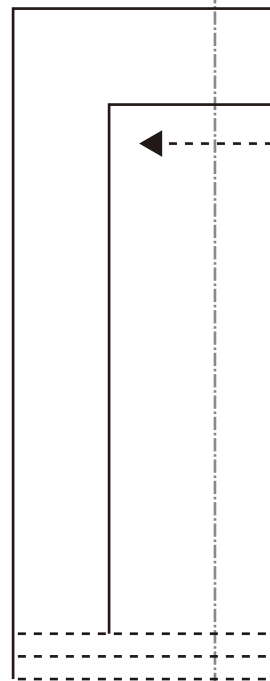
Bonding line Aa

**DRCOS**

SITE <http://dr-cos.info/en> <http://dr-cos.com/jp>  
MAIL [info@dr-cos.com](mailto:info@dr-cos.com)  
Twitter [https://twitter.com/@drcos\\_com](https://twitter.com/@drcos_com)  
facebook <https://www.facebook.com/drcoscom>

Bonding line Ab

Bonding line BA

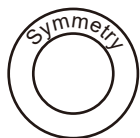


Bonding line BA

Bonding line Ba

# LADIES'S

size

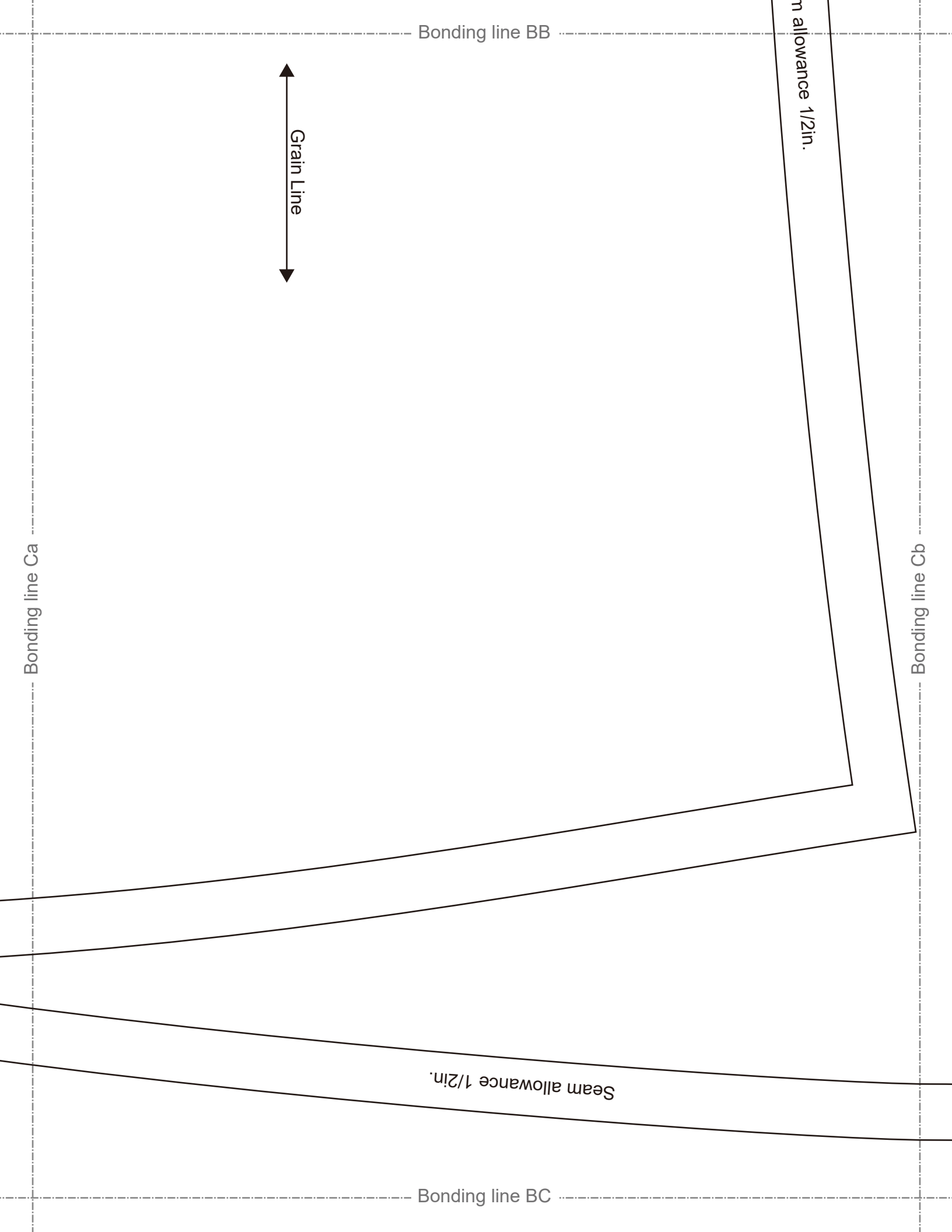


Ruffle Blouse  
Back Body  
one sheets

Bonding line Bb

Bonding line BB

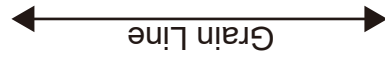
Seam allowance



Bonding line BC

Bonding line Da

Bonding line Db



uop

Bonding line BD



LADIES'  size S

Grain Line

Bonding line Ab

Bonding line Ac

  
DRCC  
SITE <http://dr-cos.info/en> ht  
MAIL [info@dr-cos.com](mailto:info@dr-cos.com)  
Twitter <https://twitter.com/@d>  
facebook <https://www.facebo>

Front

Bonding line CA

Front

Bonding line CA

LADIE

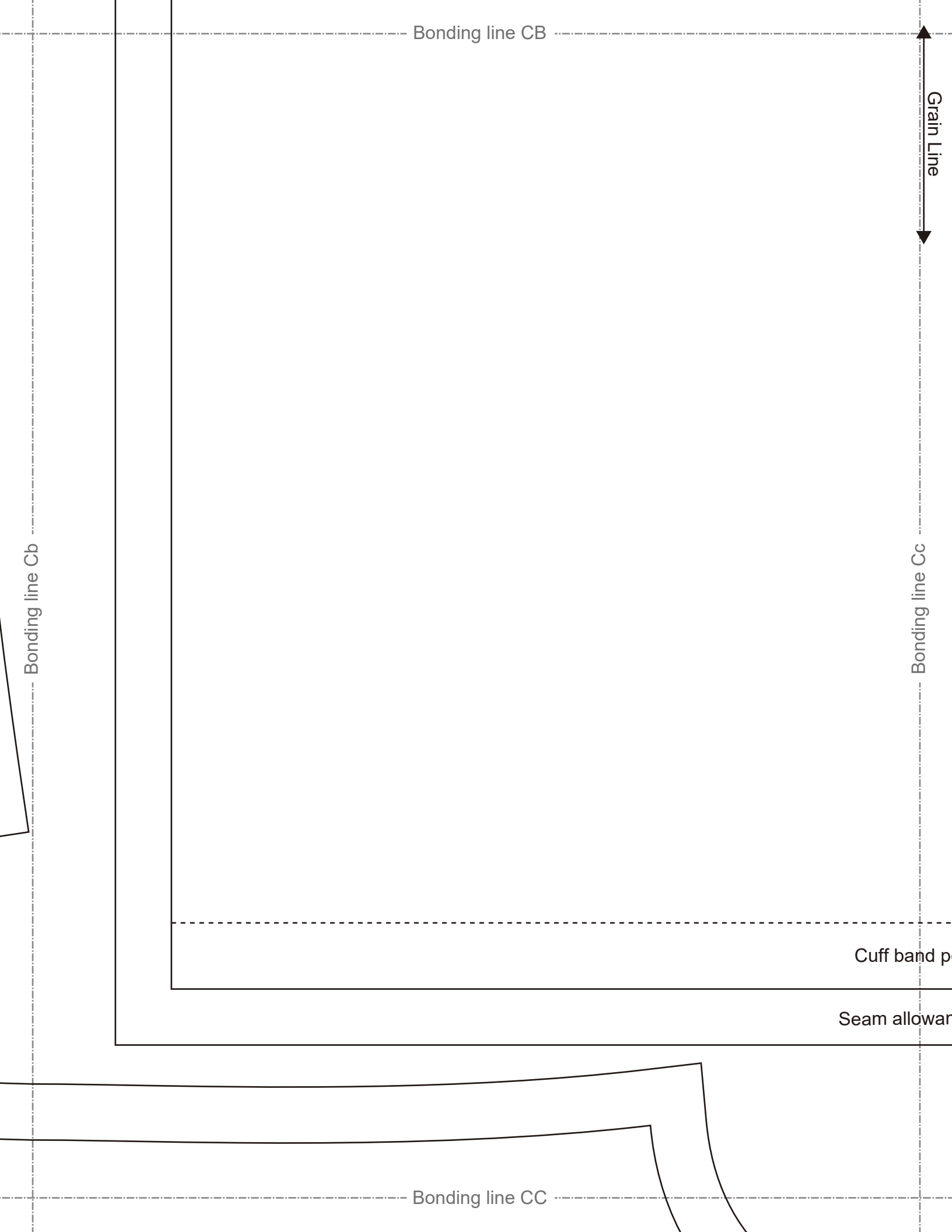
Ruffle Bl  
Sleeve  
two she

Bonding line Bb

Bonding line Bc

Bonding line CB





Bonding line CC



Ruffle Blouse  
 Front Body  
 Two sheets

Bonding line Db

— Baste

Bonding line Dc

Ruffle tucking position



Fold line

Fold line

Bonding line CD

Seam allowance 1/2in.

gather

Ruffle Blous  
Cuffs frill  
two sheets

3fold double turn



ng line Ac  
**RCOS**  
r-cos.info(en) http://dr-cos.com(jp)  
r-cos.com  
/twitter.com/@drcos\_com  
ps://www.facebook.com/drcoscom

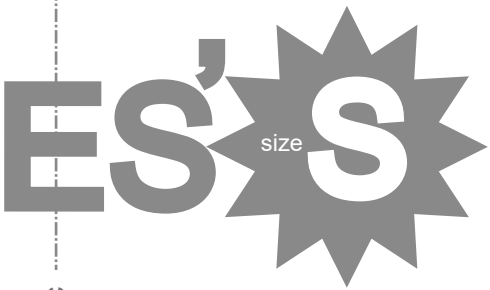
Bonding line Ad

Bonding line DA

Back

Bonding line DA

Back



Bonding line Dc  
 e Blouse  
 eeve  
 sheets

Bonding line Bd

Bonding line DB

Bonding line DB

Grain Line

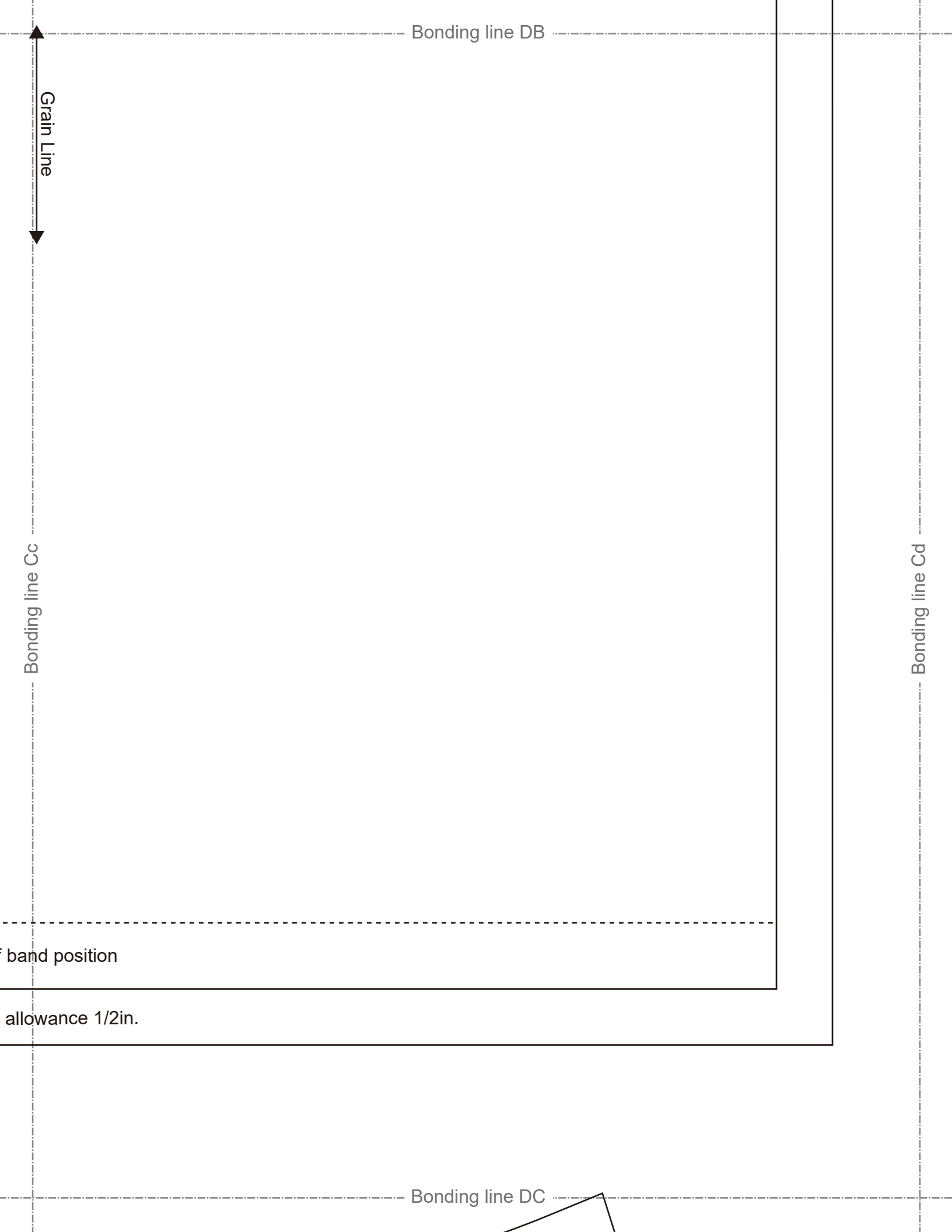
Bonding line Cc

Bonding line Cd

f band position

allowance 1/2in.

Bonding line DC



Bonding line DC

**DRCOS**  
SITE <http://dr-cos.info/en/> <http://dr-cos.com/p/>  
MAIL [info@dr-cos.com](mailto:info@dr-cos.com)  
Twitter [https://twitter.com/drcos\\_com](https://twitter.com/drcos_com)  
facebook <https://www.facebook.com/drcoscom>

Button position



Bonding line Dc



Bonding line Dd

Bonding line DD



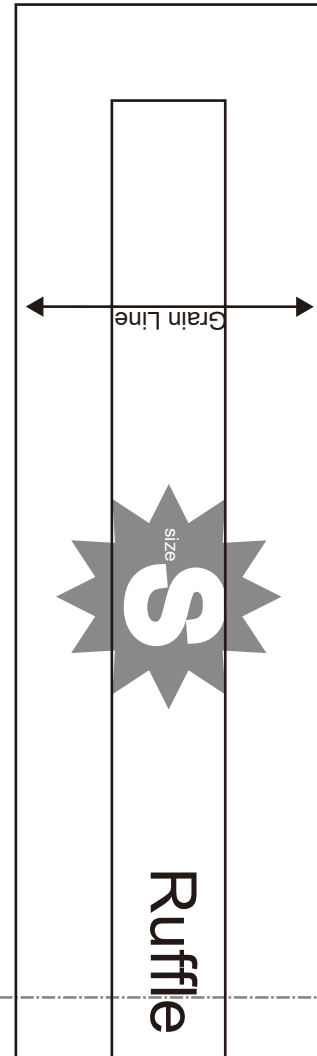
house  
frill  
sheets

**DRCOS**

SITE [http://dr-cos.info\(en\)](http://dr-cos.info(en)) [http://dr-cos.com\(jp\)](http://dr-cos.com(jp))  
MAIL [info@dr-cos.com](mailto:info@dr-cos.com)  
Twitter [https://twitter.com/drcos\\_com](https://twitter.com/drcos_com)  
facebook <https://www.facebook.com/drcoscom>

Bonding line Ad

Bonding line Ae



Bonding line EA

# Ruffle Blouse cuff bands two sheets

Seam allowance 1/2in.

