

**DRCOS**

SITE <http://dr-cos.info/en> <http://dr-cos.com/jp>  
MAIL [info@dr-cos.com](mailto:info@dr-cos.com)  
Twitter [@drcos\\_com](https://twitter.com/@drcos_com)  
facebook <https://www.facebook.com/drcoscom>



**DRCOS**

SITE <http://dr-cos.info/en> <http://dr-cos.com/jp>  
MAIL [info@dr-cos.com](mailto:info@dr-cos.com)  
Twitter [@drcos\\_com](https://twitter.com/@drcos_com)  
facebook <https://www.facebook.com/drcoscom>



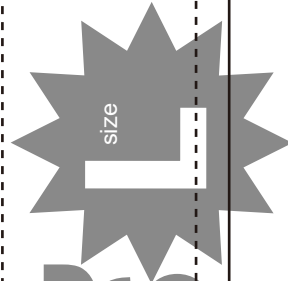
Bonding line AA

Bonding line Aa

LADIES'  size

Bonding line AA

Bonding line A

LADIES'  size

use  
(top)  
bits



Bonding line Ba

3fold double turn

# Ruffle Blouse Chest ruffle (bottom) Two sheets

gather

Seam allowance 1/2in.

Bonding line AC

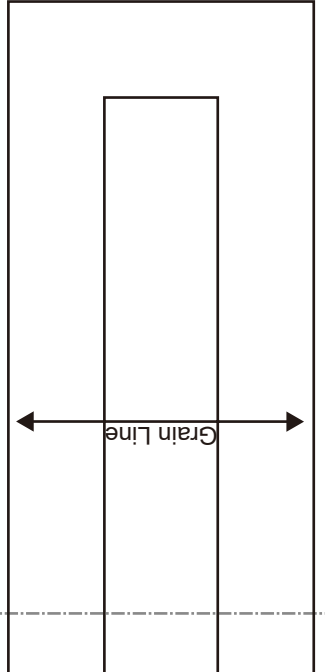
Bonding line AB

3fold double turn

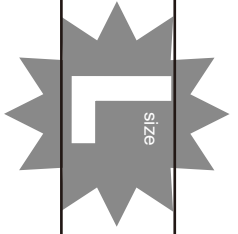
gather

Seam allowance 1/2in.

# Ruffle Blouse Chest ruffle (top) Two sheets



Bonding line Ca



# Ruffle Blouse cuff bands two sheets

Seam allowance 1/2in.



Bonding line AC

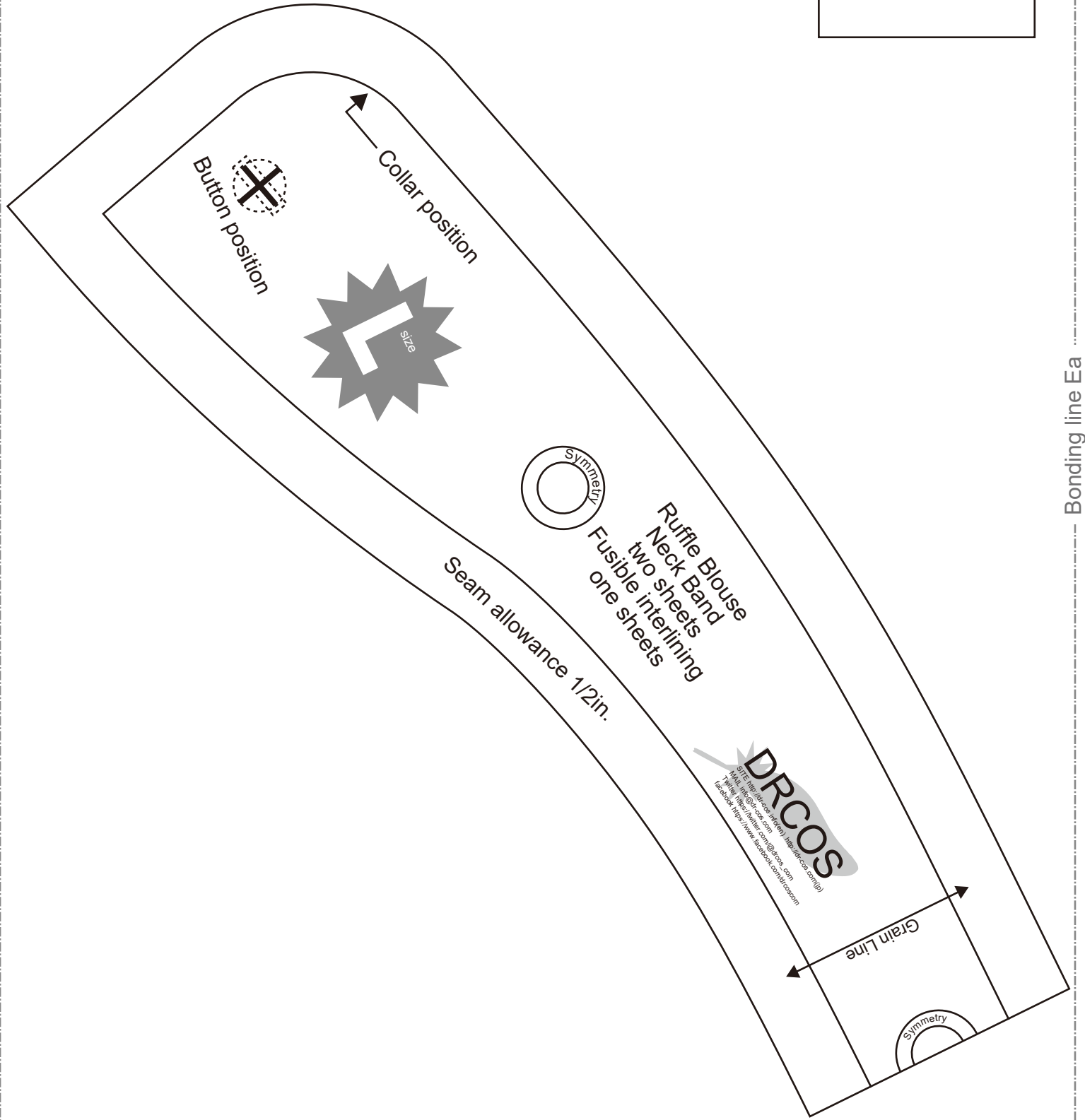


Bonding line AD



Bonding line AD

**DRCOS**  
SITE: <http://drcos.com>  
Twitter: <http://twitter.com/drcos>  
Facebook: <http://www.facebook.com/drcos.com>



Bonding line Ea

# DRCOS

SITE [http://dr-cos.info\(en\)](http://dr-cos.info(en)) [http://dr-cos.com\(jp\)](http://dr-cos.com(jp))

MAIL [info@dr-cos.com](mailto:info@dr-cos.com)

Twitter [https://twitter.com/@drcos\\_com](https://twitter.com/@drcos_com)

facebook <https://www.facebook.com/drcoscom>

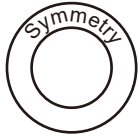
Bonding line Aa

Bonding line Ab

Bonding line BA

Bonding line BA

# LADIES' size



Ruffle Blouse  
Back Body  
one sheets



Bonding line Ba

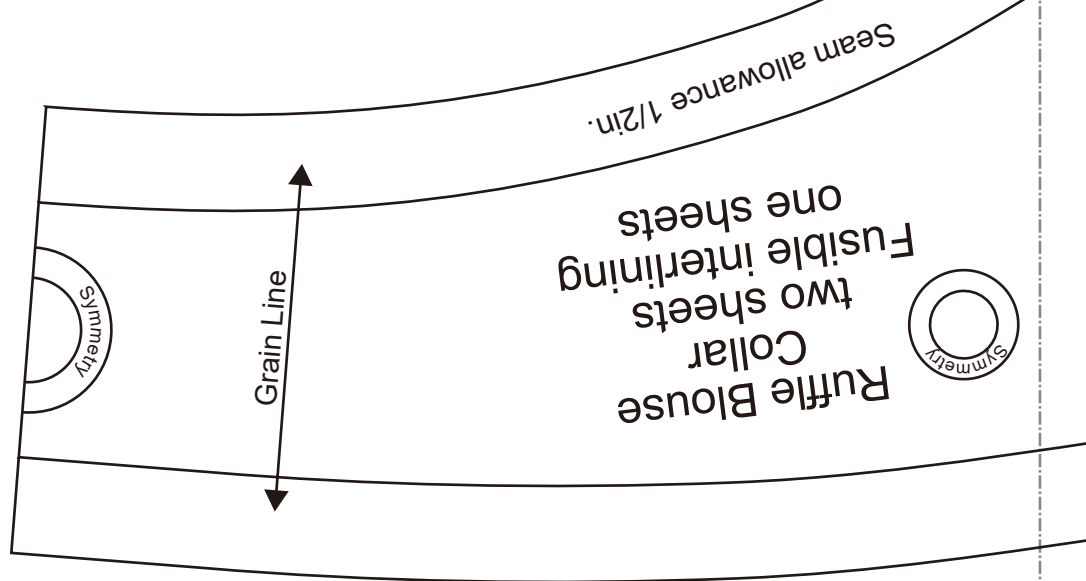
Bonding line Bb

Bonding line BB

Bonding line BB

Bonding line Ca

Bonding line Cb



Bonding line BC



Bonding line Ab

Bonding line Ac

# DRCOS

SITE [http://dr-cos.info\(en\)](http://dr-cos.info(en)) <http://dr-cos.com>  
MAIL [info@dr-cos.com](mailto:info@dr-cos.com)  
Twitter [https://twitter.com/drcos\\_com](https://twitter.com/drcos_com)  
facebook <https://www.facebook.com/drcos>

Bonding line CA

Bonding line CA

# LADIE

Ruffle  
Front  
Two s

Bonding line Bb

Bonding line Bc

Seam allowance 1/2in.

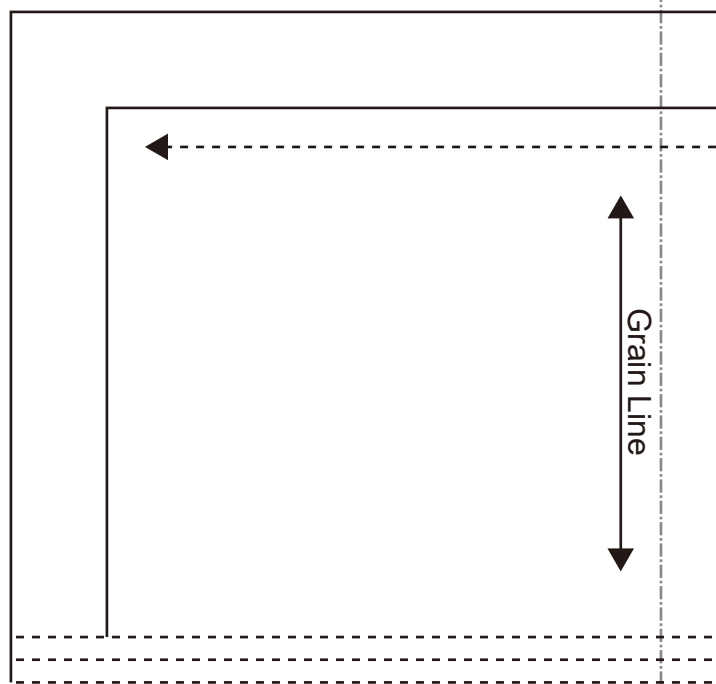
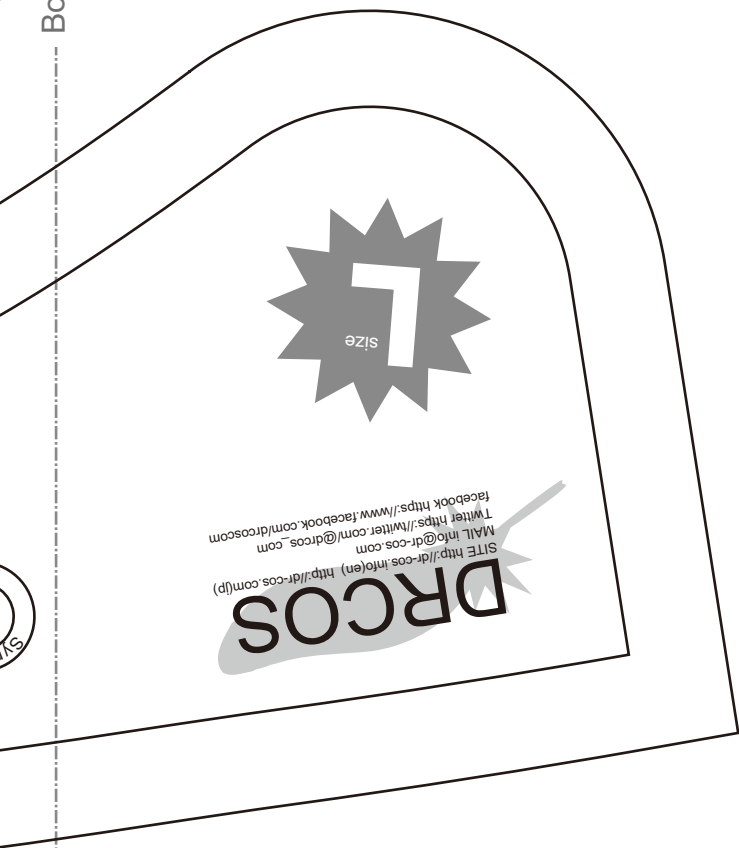
Seam allowance 1/2in.

Bonding line CB

Bonding line CB

Bonding line Cb

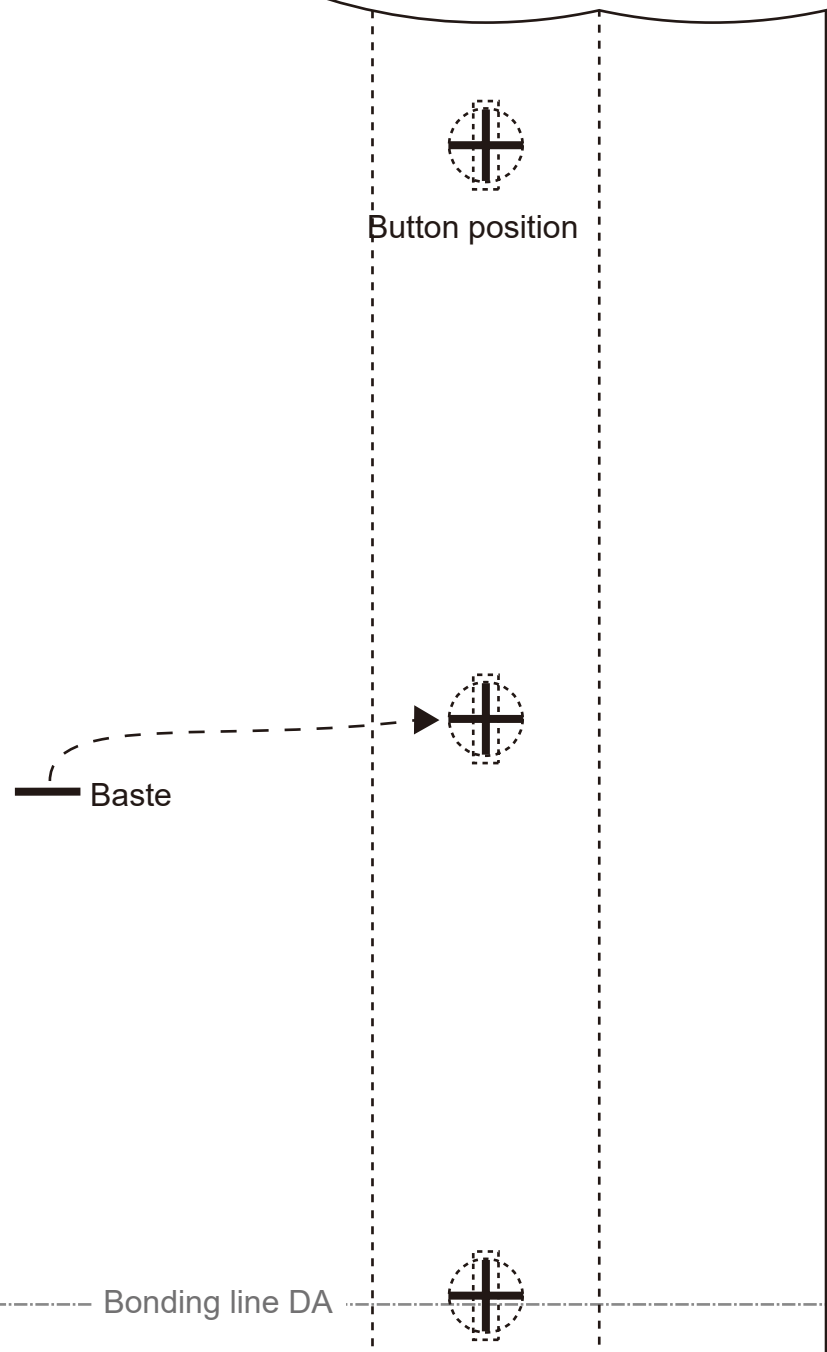
Bonding line Cc



Bonding line CC

Bonding line Ac

Bonding line Ad



Button position

Baste

Bonding line DA



Ruffle Blouse  
Front Body  
Two sheets

Bonding line Bc

Bonding line DA



Grain Line

Ruffle tucking position

Fold line

Fold line

Bonding line Bd

Bonding line DB



Bonding line DB

Bonding line Cc

Bonding line Cd

LADIES'  L size

Grain Line

Bonding line DC

**DRC**

SITE [http://dr-cos.info\(en\)](http://dr-cos.info(en))  
MAIL [info@dr-cos.com](mailto:info@dr-cos.com)  
Twitter <https://twitter.com/>  
facebook <https://www.faceb>

Bonding line Ad

Bonding line Ae

Front

Bonding line EA

**LADIE**

Bonding line EA

# LADIE

Ruffle Bl  
Sleeve  
two she

Bonding line Bd

Bonding line Be

Grain Line

Bonding line EB



Bonding line EB

Bonding line Cd

Cuff band p

Bonding line Ce

Seam allowa

Seam allowance 1/2in.

gather

# Ruffle Blouse Cuffs frill two sheets

3fold double turn

Bonding line EC

# RCOS

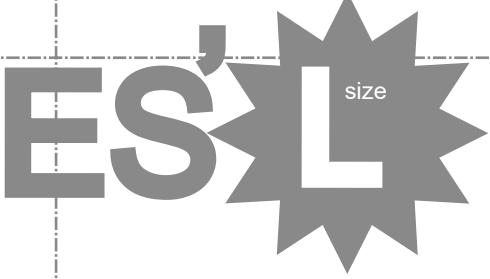
[dr-cos.info\(en\)](mailto:dr-cos.info(en)) [http://dr-cos.com\(jp\)](http://dr-cos.com(jp))  
[dr-cos.com](http://dr-cos.com)  
[s://twitter.com/drcos\\_com](https://twitter.com/drcos_com)  
[tps://www.facebook.com/drcoscom](https://www.facebook.com/drcoscom)

Bonding line Ae

Back



Bonding line FA



Bonding line FA

e Blouse  
leeve  
sheets

Bonding line Be



Bonding line FB

Bonding line FB

Bonding line Ce  
off band position

allowance 1/2in.



**DRCOS**  
SITE [http://dr-cos.info\(en\)](http://dr-cos.info(en)) [http://dr-cos.com\(jp\)](http://dr-cos.com(jp))  
MAIL [info@dr-cos.com](mailto:info@dr-cos.com)  
Twitter [https://twitter.com/drcos\\_com](https://twitter.com/drcos_com)  
facebook <https://www.facebook.com/drcoscom>

Bonding line FC