

Seam allowance 1/2in.

Princess Dress
Front Facing two sheets
Fusible interlining two sheets

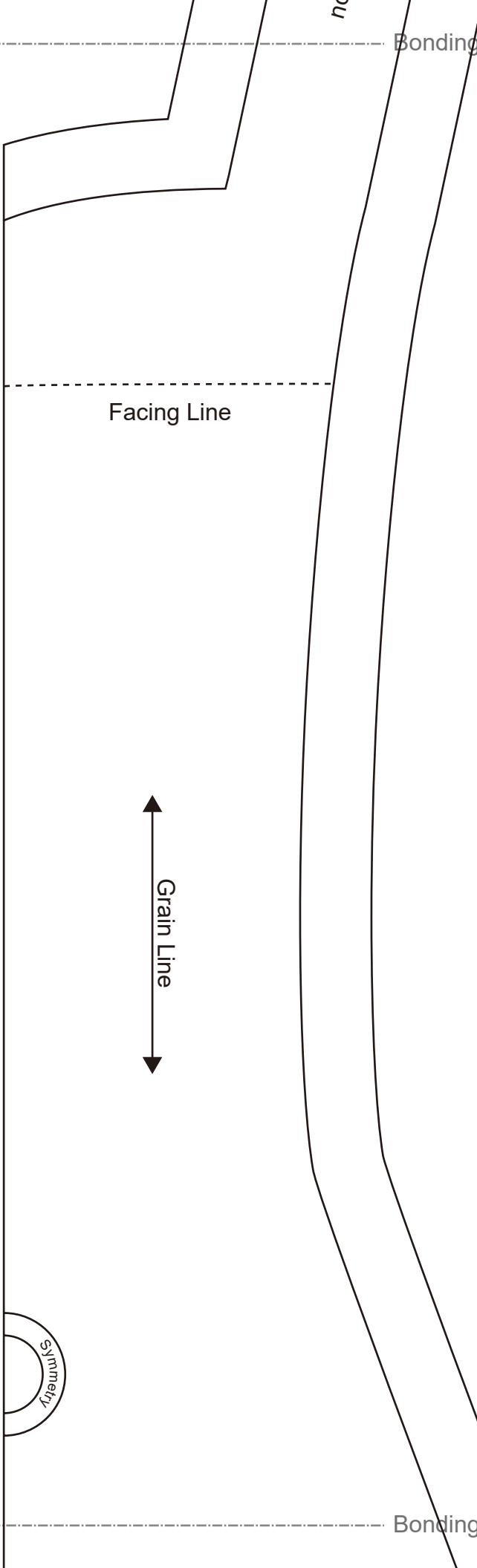
Spare cloth

notch mark

Bonding line AA

Bonding line Aa

Bonding line AA



Princess Dress
Back Facing two sheets
Fusible interlining two sheets

Seam allowance 1/2in.

Grain Line



Bonding line AB

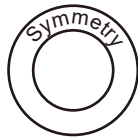
Bonding line Ba

Bonding line AB



Children's

Princess Dress 2
Front body
one sheets



DRCOS

SITE [http://dr-cos.info\(en\)](http://dr-cos.info(en)) [http://dr-cos.com\(jp\)](http://dr-cos.com(jp))
MAIL info@dr-cos.com
Twitter [@drcos_com](https://twitter.com/@drcos_com)
facebook <https://www.facebook.com/drcoscom>

Seam allowance 1/2in.

Bonding line Ca

Bonding line AC

Princess Dress 2
Front body side
two sheets

Bonding line Ab

Seam allowance 1/2in.



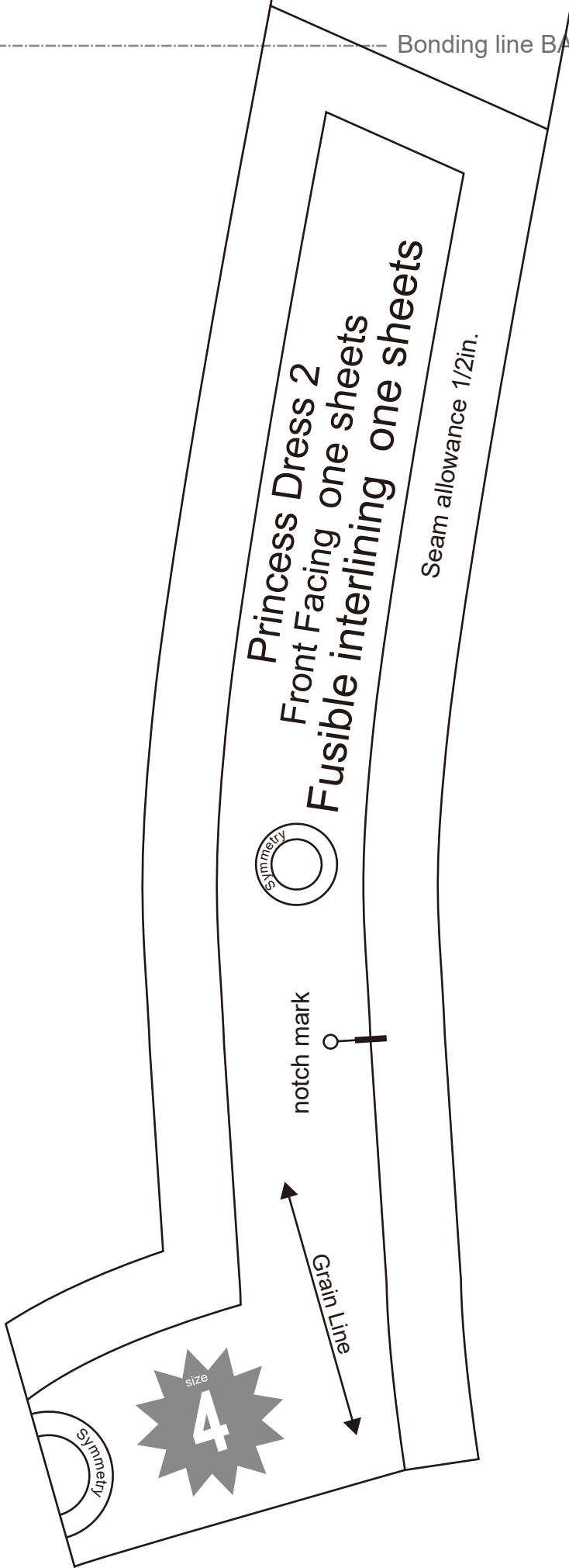
Spare cloth

Bonding line BA

Bonding line Aa

Bonding line Ba

Bonding line BA



Bonding line BB

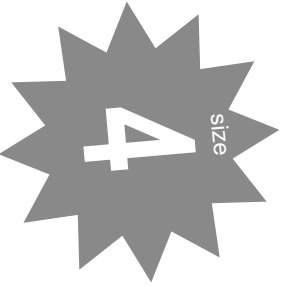
Seam allowance 1/2in.

Bonding line Bb

DRCOS

SITE <http://dr-cos.info/en/> <http://dr-cos.com/ip/>
 MAIL info@dr-cos.com
 Twitter [@drcos_com](https://twitter.com/@drcos_com)
 facebook <https://www.facebook.com/drcoscom>

Children's



Princess Dress 2

Front body side

Bonding line Ab

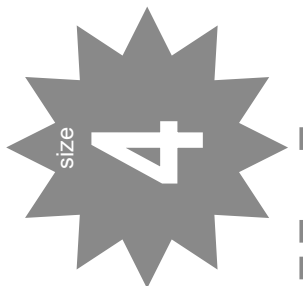
Grain Line

Bonding line Ac

Facing Line

Grain Line

Bonding line CA



Children's

Bonding line CA

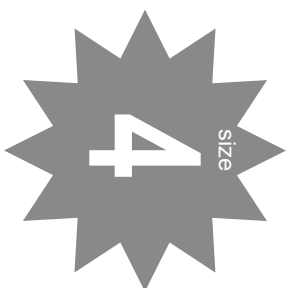
Bonding line Bc

Bonding line Bb

Children's

Princess Dress 2

Back body
two sheets



Baste

Fastener end O

Bonding line CB

DPCCOC

Children's

Princess Dress 2 Back body side two sheets

Bonding line DA



eam allowance 1/2in.

Grain

Bonding line Ac

Bonding line Ad

Facing Line

Chi

Princ
Back
tw

Bonding line DA

Seam all

Bonding line Bc

Bonding line Bd

Grain Line

Facing Line

Shoulder strap position

Fusible Stay tape

Bonding line DB

