



Grain Line

notch mark

Bonding line AA

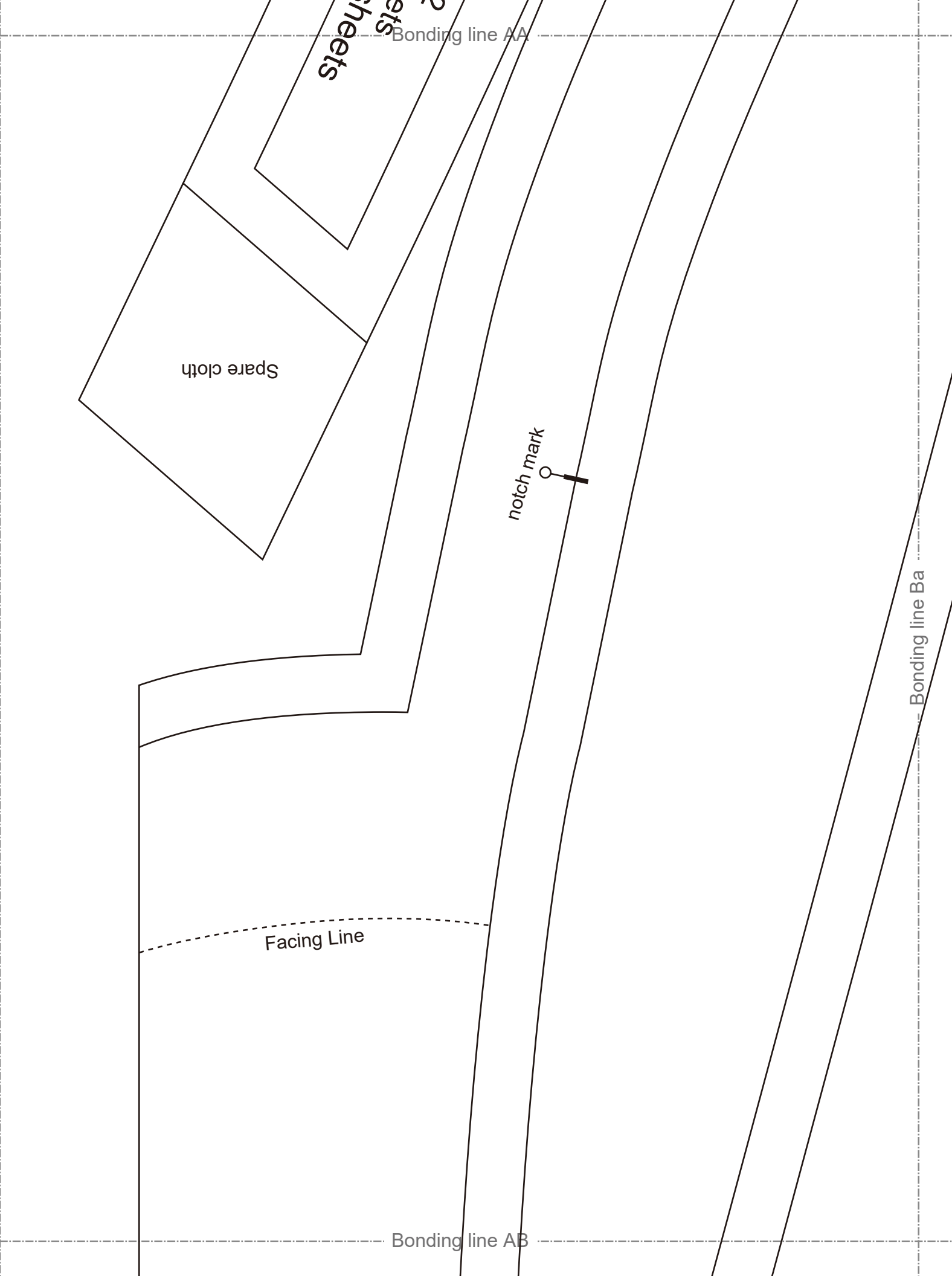


Princess Dress 2  
Front Facing interlining one sheets  
Seam allowance 1/2in.

Princess Dress  
Back Facing two sheets  
Fusible interlining two sheets

Seam allowance 1/2in.

Grain Line



Bonding line AB



Grain Line



Symmetry

Bonding line AC

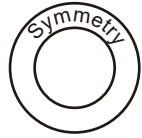
<http://dr-cos.com>  
[@dr-cos.com](mailto:dr-cos.com)  
<http://dr-cos.com>

SO

Bonding line C

Bonding line AC

# Princess Dress 2



Front body  
one sheets

Children's <sup>size</sup> 10

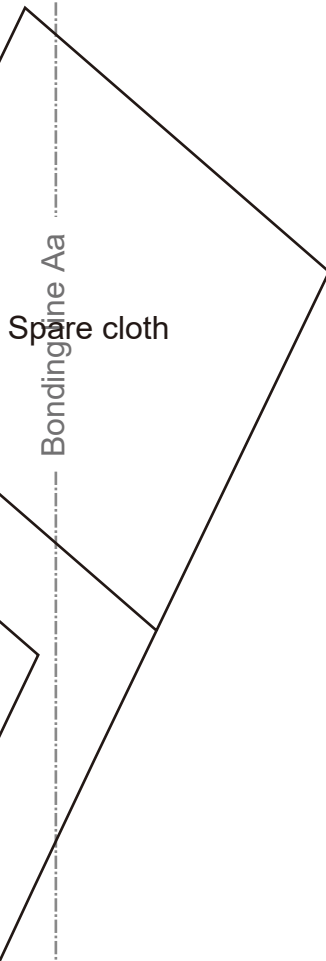
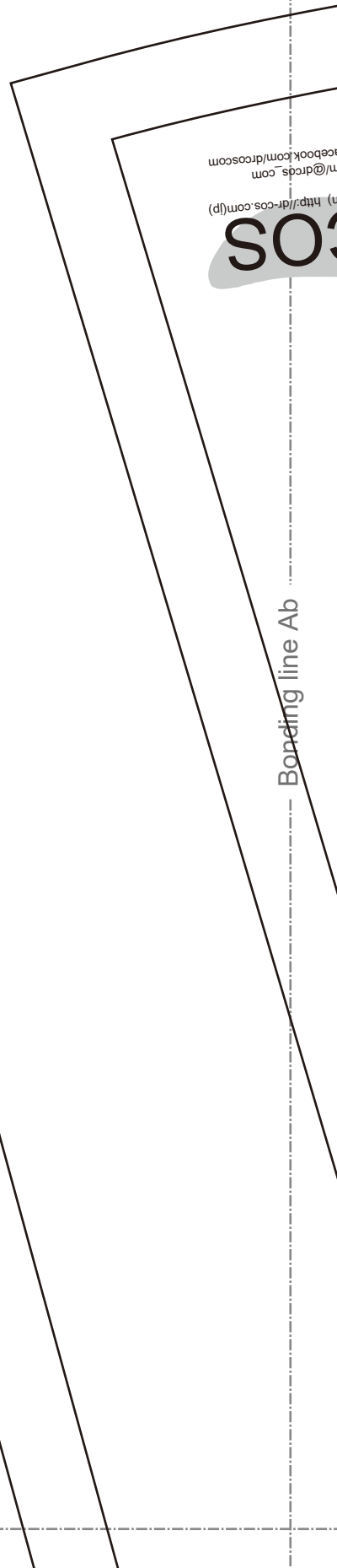
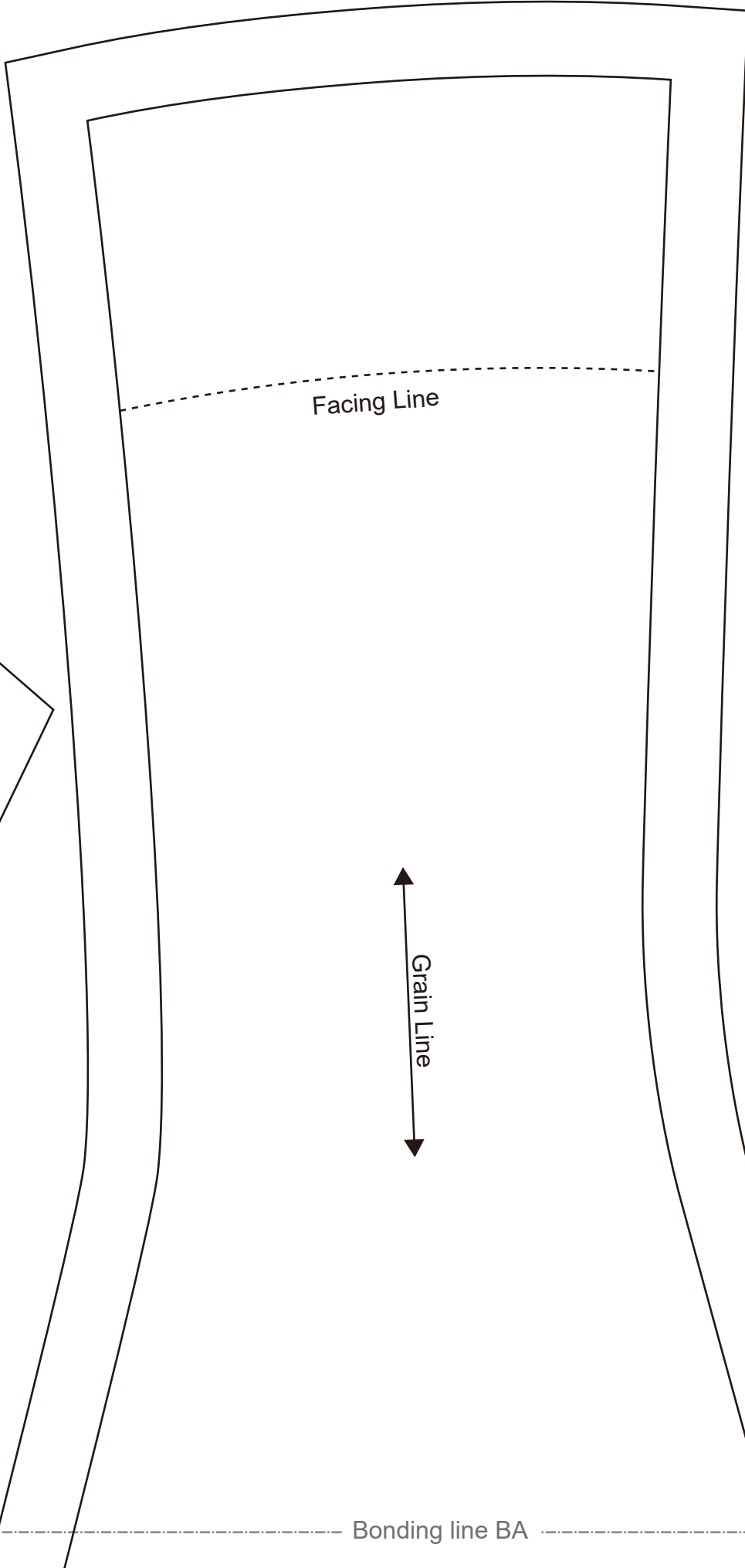
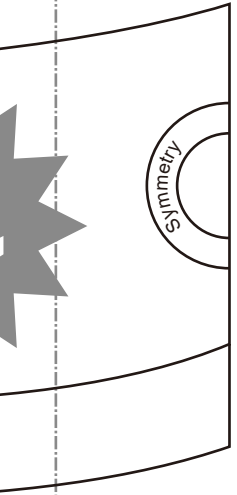
Bonding line Da

**DRCO**

SITE [http://dr-cos.info\(en\)](http://dr-cos.info(en)) <http://dr-cos.com>  
MAIL [info@dr-cos.com](mailto:info@dr-cos.com)  
Twitter [@drcos\\_com](https://twitter.com/@drcos_com)  
facebook <https://www.facebook.com/drcos.com/>

Seam allowance 1/2in.

Bonding line AD



SO  
(n) http://dr-cos.com(fp)  
m/@dr-cos.com  
facebook.com/dr-coscom

Bonding line Aa  
Spare cloth

Bonding line Ab

Facing Line

Grain Line

Bonding line BA

Bonding line BA

Princess Dress 2  
Back body side  
two sheets

Bonding line Ba

Bonding line Bb

Children's  size 10

Bonding line BB

Bonding line BB

**DRCC**

SITE [http://dr-cos.info\(en\)](http://dr-cos.info(en)) ht  
MAIL [info@dr-cos.com](mailto:info@dr-cos.com)  
Twitter <https://twitter.com/@d>  
facebook <https://www.facebo>

Seam allowance 1/2in.

Seam allowance 1/2in.

**DRCCOS**  
SITE [http://dr-cos.info\(en\)](http://dr-cos.info(en)) <http://dr-cos.com>  
MAIL [info@dr-cos.com](mailto:info@dr-cos.com)  
Twitter <https://twitter.com/@drcos>  
facebook <https://www.facebook.com/drcos>

Bonding line Ca

**Children's**  
**10**  
size

**Princess Dress 2**  
**Back body**  
**two sheets**

Bonding line Cb

Bonding line BC

Bonding line BC

Baste

Fastener end

Bonding line Da

Bonding line Db

**DR COS**

o(en) <http://dr-cos.com/jp>  
m  
com/@drcos\_com  
v.facebook.com/drcoscom

Grain Line

Bonding line BD

F



Bonding line BD

Fusible Stay tape

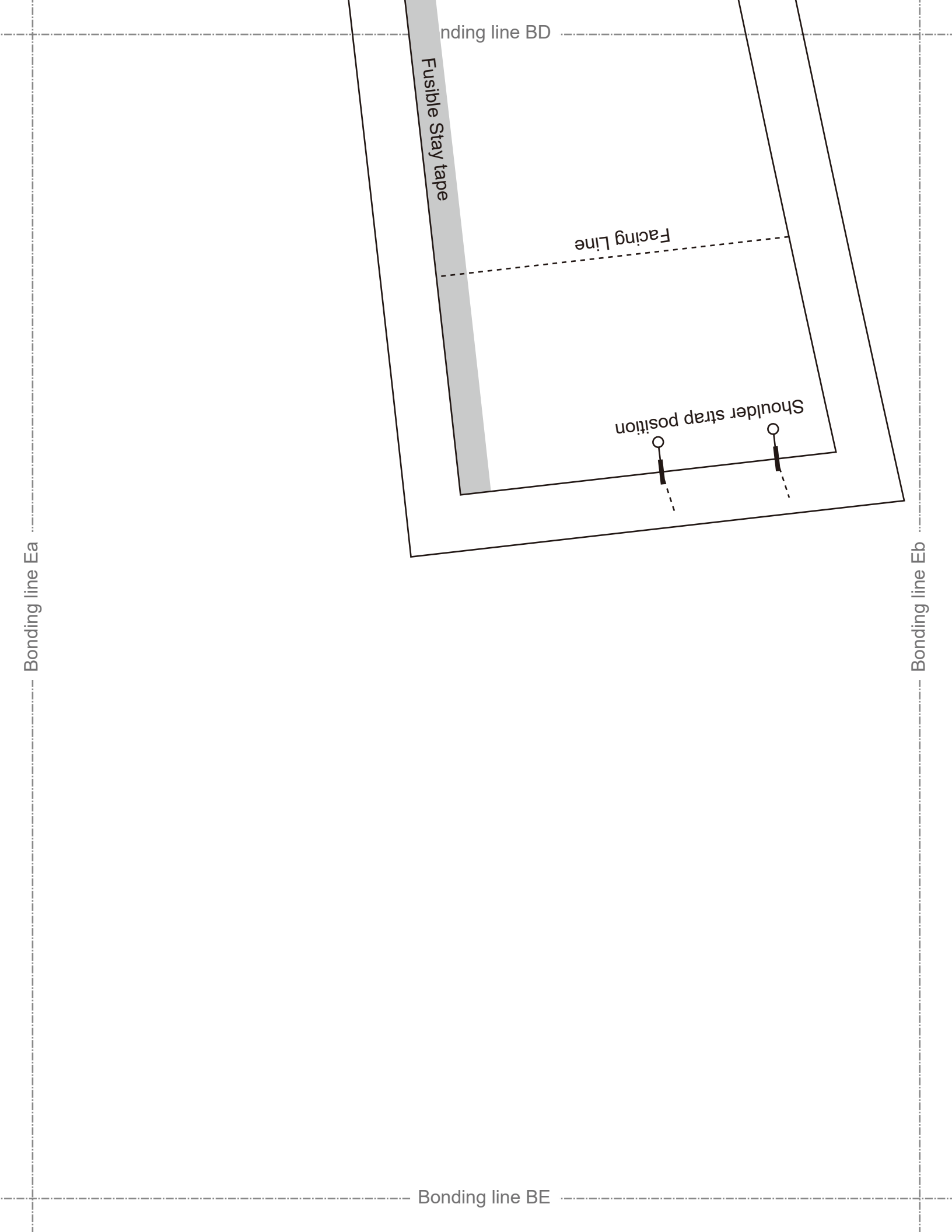
Facing Line

Shoulder strap position

Bonding line Ea

Bonding line Eb

Bonding line BE



Seam allowance 1/2in.

**DRCOS**  
SITE <http://dr-cos.info/en> <http://dr-cos.com>  
MAIL [info@dr-cos.com](mailto:info@dr-cos.com)  
Twitter <https://twitter.com/dr-cos>  
facebook <https://www.facebook.com/dr-cos>

# Children's

size **10**

Princess Dress 2  
Front body side  
two sheets

Bonding line Ab

Bonding line Ac

Bonding line CA

Bonding line CA

Bonding line Bb

Bonding line Bc



Bonding line CB

**RCOS**

rcos.info(en) http://dr-cos.com(jp)  
dr-cos.com  
://twitter.com/@drcos\_com  
ps://www.facebook.com/drcoscom

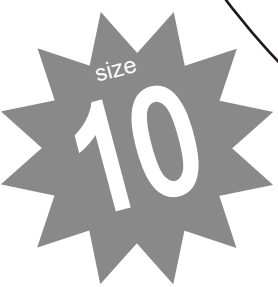
Bonding line CB

Facing Line

Bonding line Cb

Bonding line Cc

Seam allowance 1/2in.



Princess Dress  
Front Facing two sheets  
Fusible interlining two sheets

Bonding line CC