

Bonding line AA

7.07in outline

5.9in outline

4.72in outline

3.54in outline

2.36in outline

1.18in outline

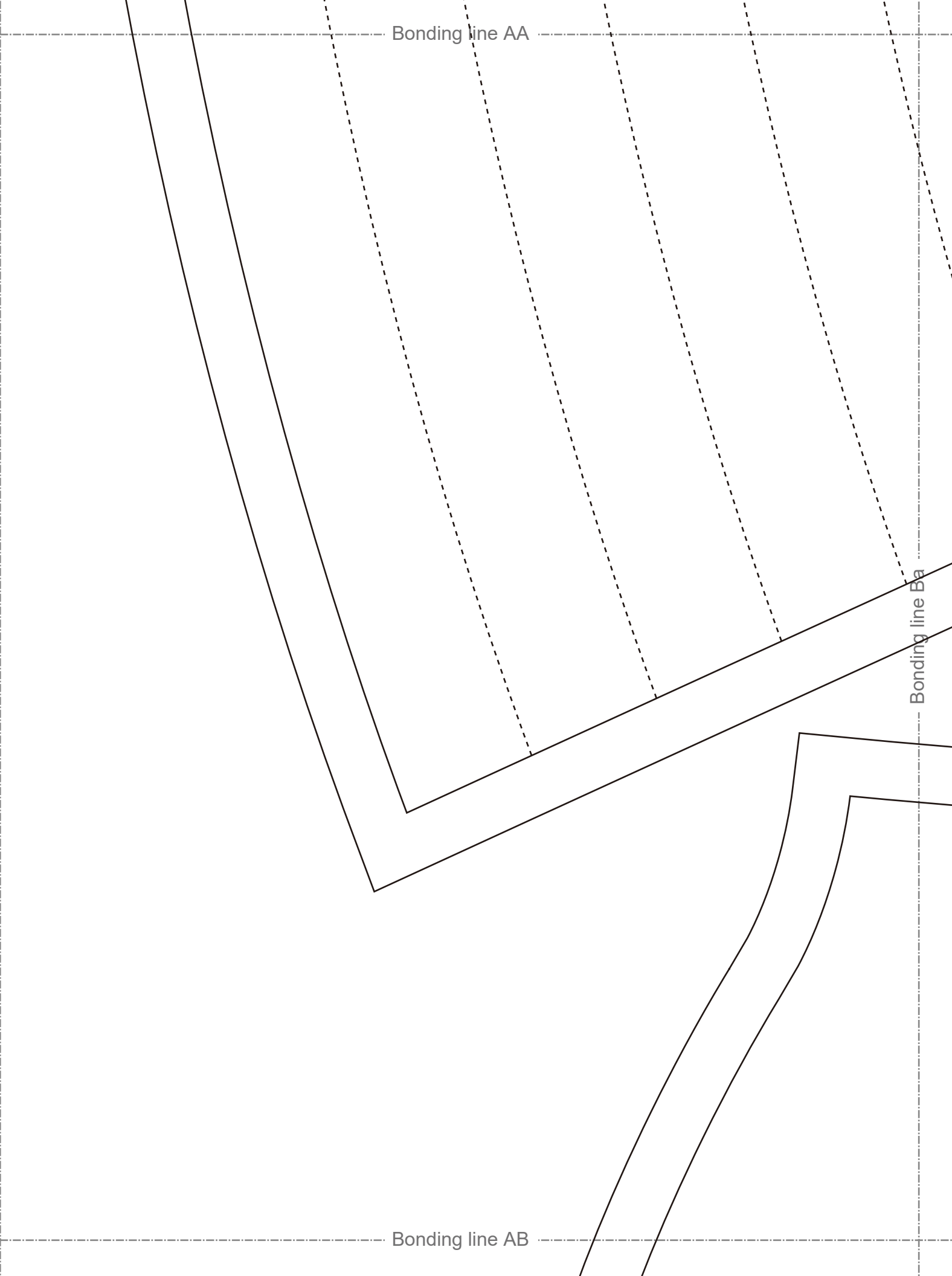
Seam allowance 1/2in.

Bonding line AA

Bonding line AA

Bonding line Ba

Bonding line AB

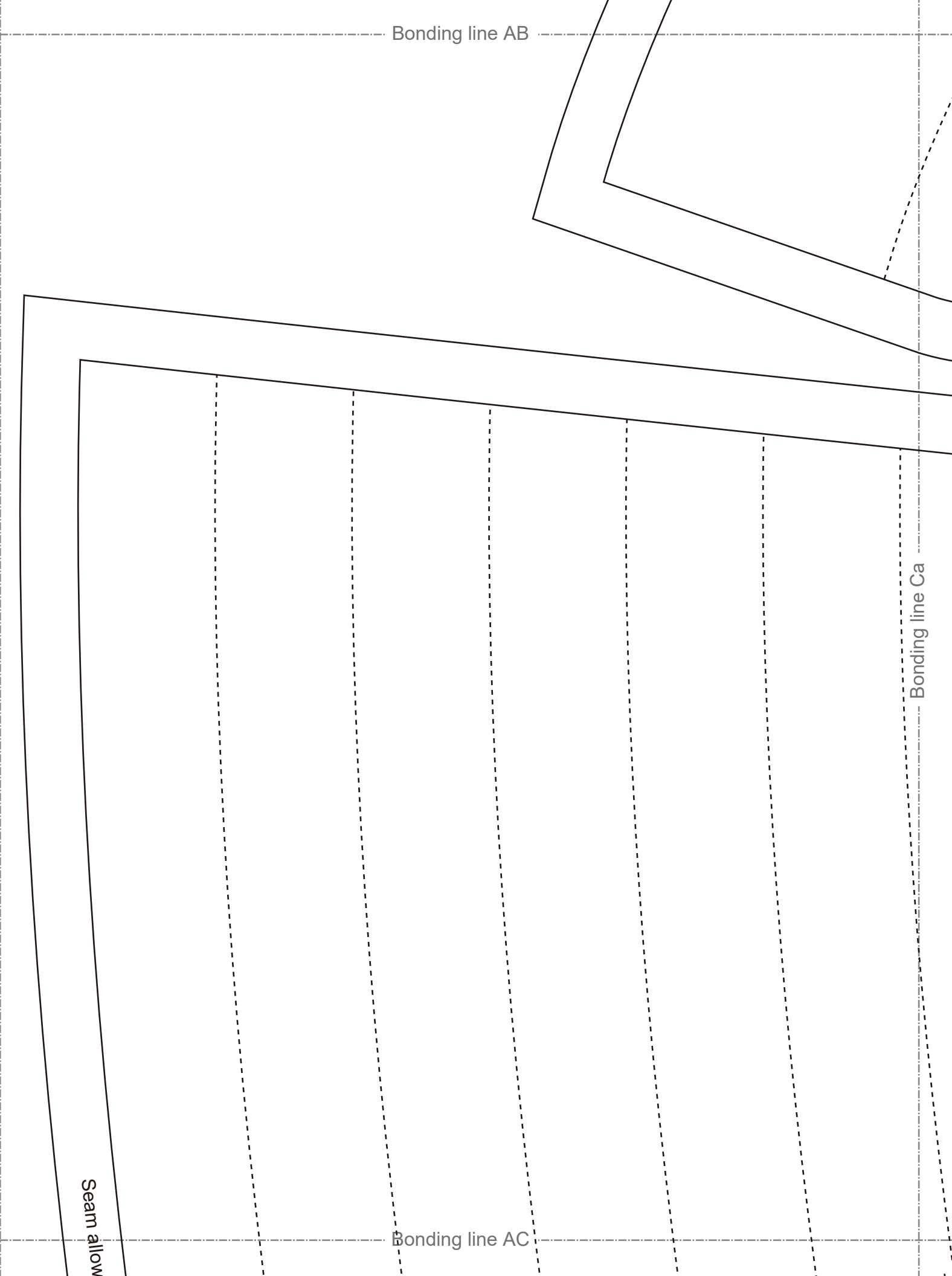


Bonding line AB

Bonding line Ca

Bonding line AC

Seam allow



7.07in outline

5.9in outline

4.72in outline

3.54in outline

2.36in outline

1.18in outline

am allowance 1/2in.

Bonding line AC

Bonding line Da

Bonding line AD



Bonding line AD



Bonding line Ea

Bonding line AE

7.07in outline

Bonding line Aa

8.26in outline

9.44in outline

Bonding line BA

Bonding line Ab



SI  
M  
TL  
fac

Bonding line BA

SITE <http://dr-cos.info/en> | <http://dr-cos.com/jp>  
MAIL [info@dr-cos.com](mailto:info@dr-cos.com)  
Twitter <https://twitter.com/dr-cos>  
facebook <https://www.facebook.com/dr-cos.com>

**DRCOS**

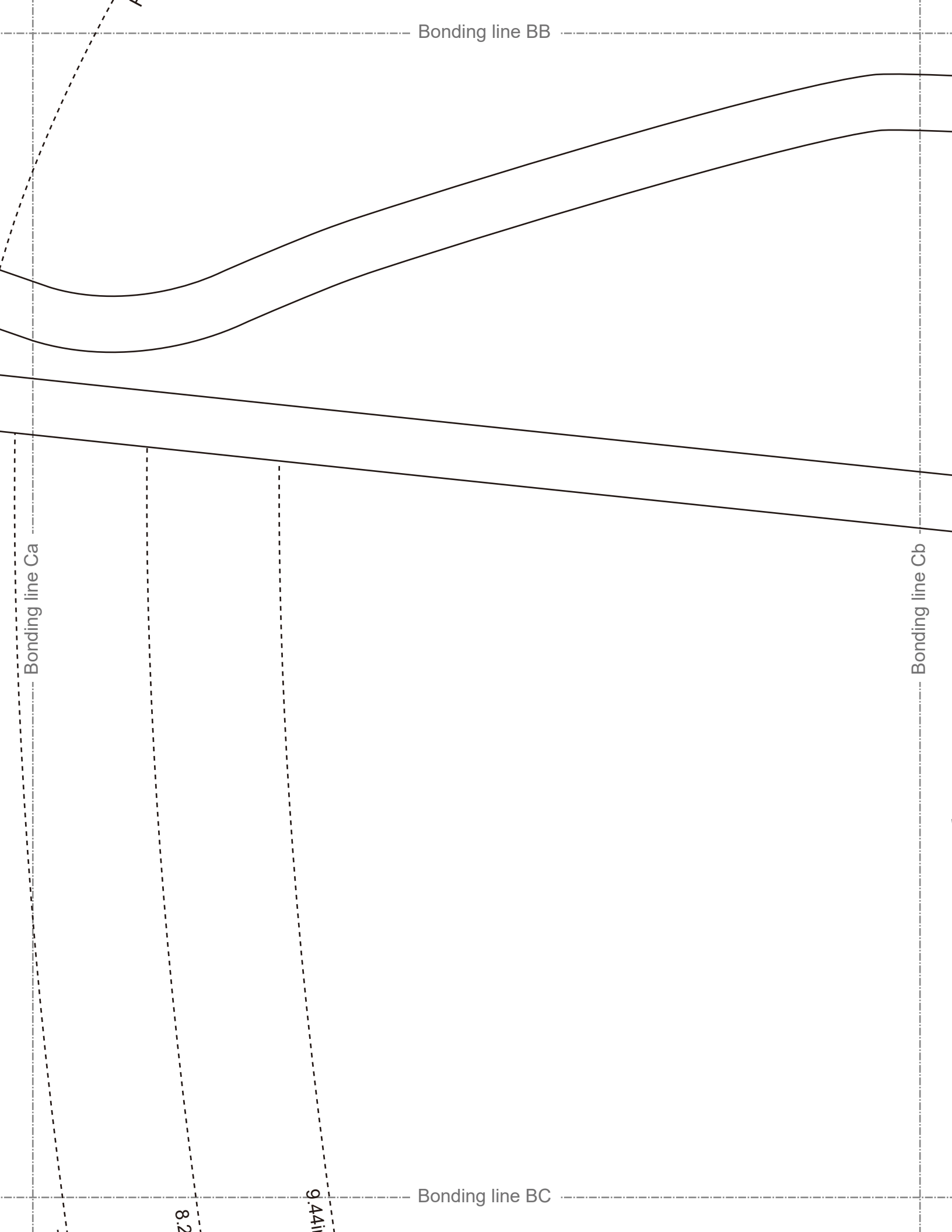
Bonding line Ba

Bonding line Bb

Grain

Facing Line

Bonding line BB



Bonding line BB

Bonding line Ca

Bonding line Cb

Bonding line BC

8.2

9.44li



Bonding line BC

9.44in cutline

8.26in cutline

7.07in cutline

Bonding line Da

Bonding line BD

Facing Line

Bonding line Db

Grain L



DR

SITE: <http://dr-cc.com>  
MAIL: [info@dr-cc.com](mailto:info@dr-cc.com)  
Twitter: <https://twitter.com/dr-cc>  
facebook: <https://www.facebook.com/dr-cc>

Bonding line BD

Bonding line Ea

LADIES' **LL** size

Bonding line Eb

From  
Fusible

Seam allowance 1/2in.

Bonding line BE



# LADIES' size

Bonding line Ab

Bonding line Ac

Bonding line CA

Bonding line CA

Bonding line Bb

Bonding line Bc

Bonding line CB

Grain Line



Princess Dress  
Front body side  
two sheets

Bonding line CB

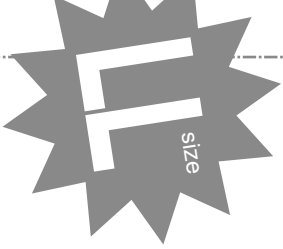
Bonding line Cb

Bonding line Cc

LADIES' T

Princess Dress  
Back body side  
two sheets

Bonding line CC



Bonding line CC

Bonding line Db

Fusible Stay tape

Bonding line Dc

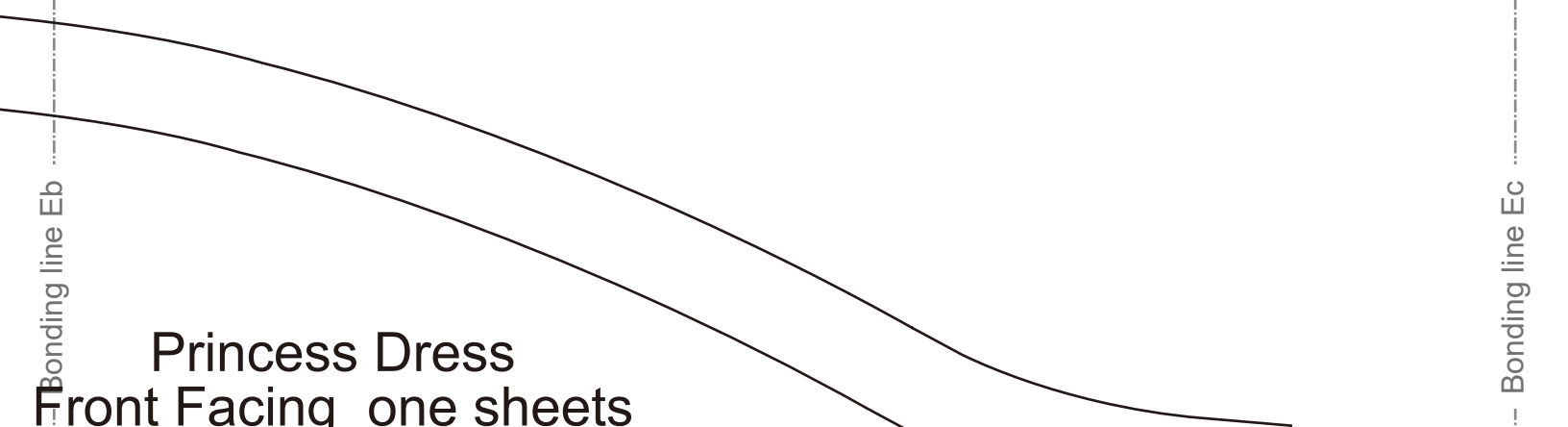
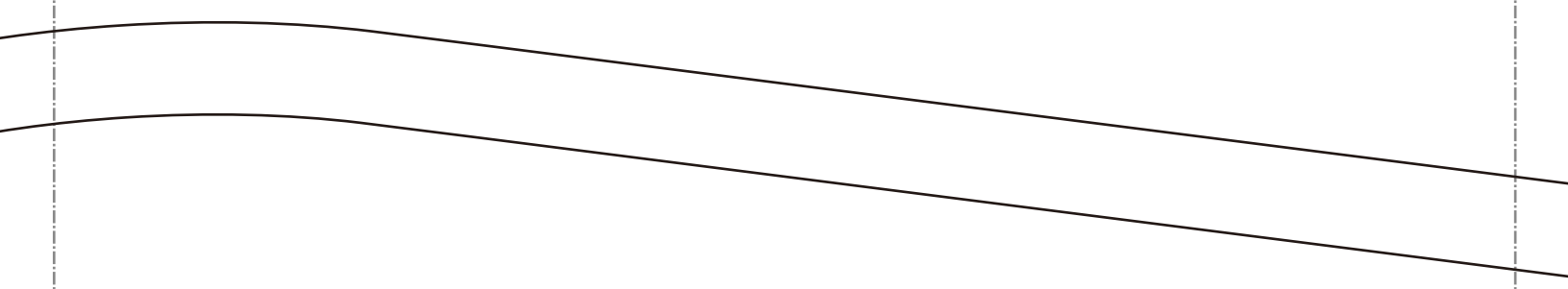
Grain Line



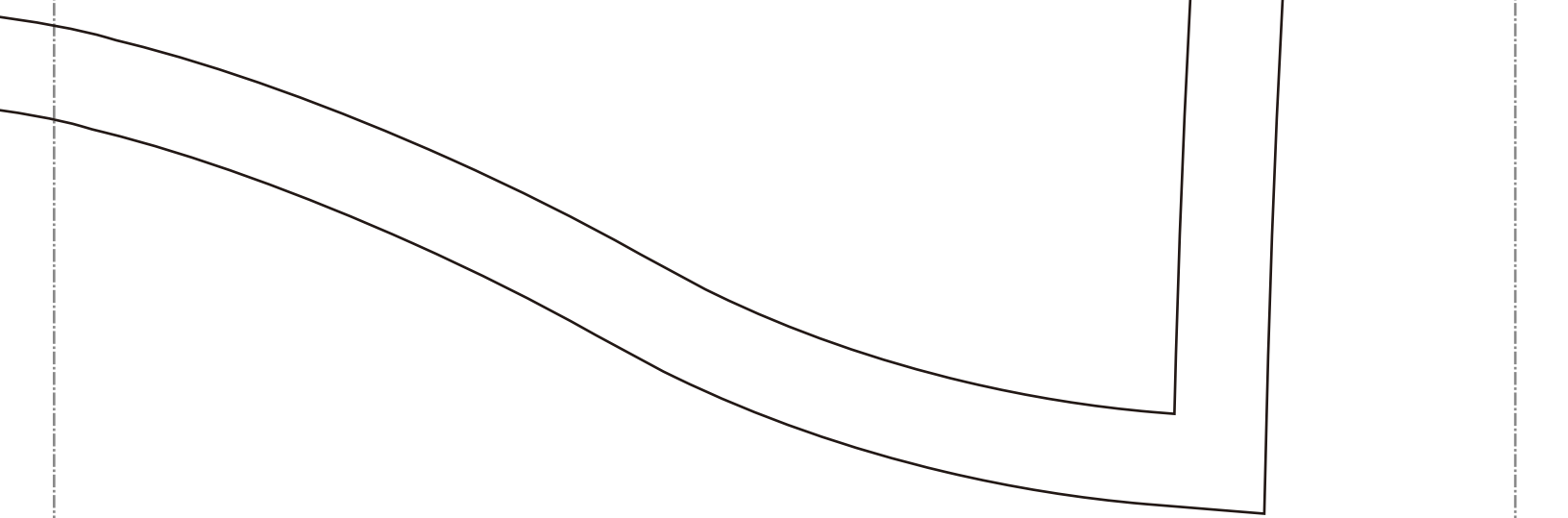
Bonding line CD

Princess Dress  
Back body

Bonding line CD



Princess Dress  
Front Facing one sheets  
fusible interlining one sheets



Bonding line CE



**Princess Dress**  
**Front body**  
**one sheets**

Bonding line Ac

Bonding line Ad

Bonding line DA



Bonding line DA

Bonding line Bc

Bonding line Bd

tWO S1100

LADIES' <sup>size</sup> T

Bonding line DB

Bonding line DB

Bonding line Cc

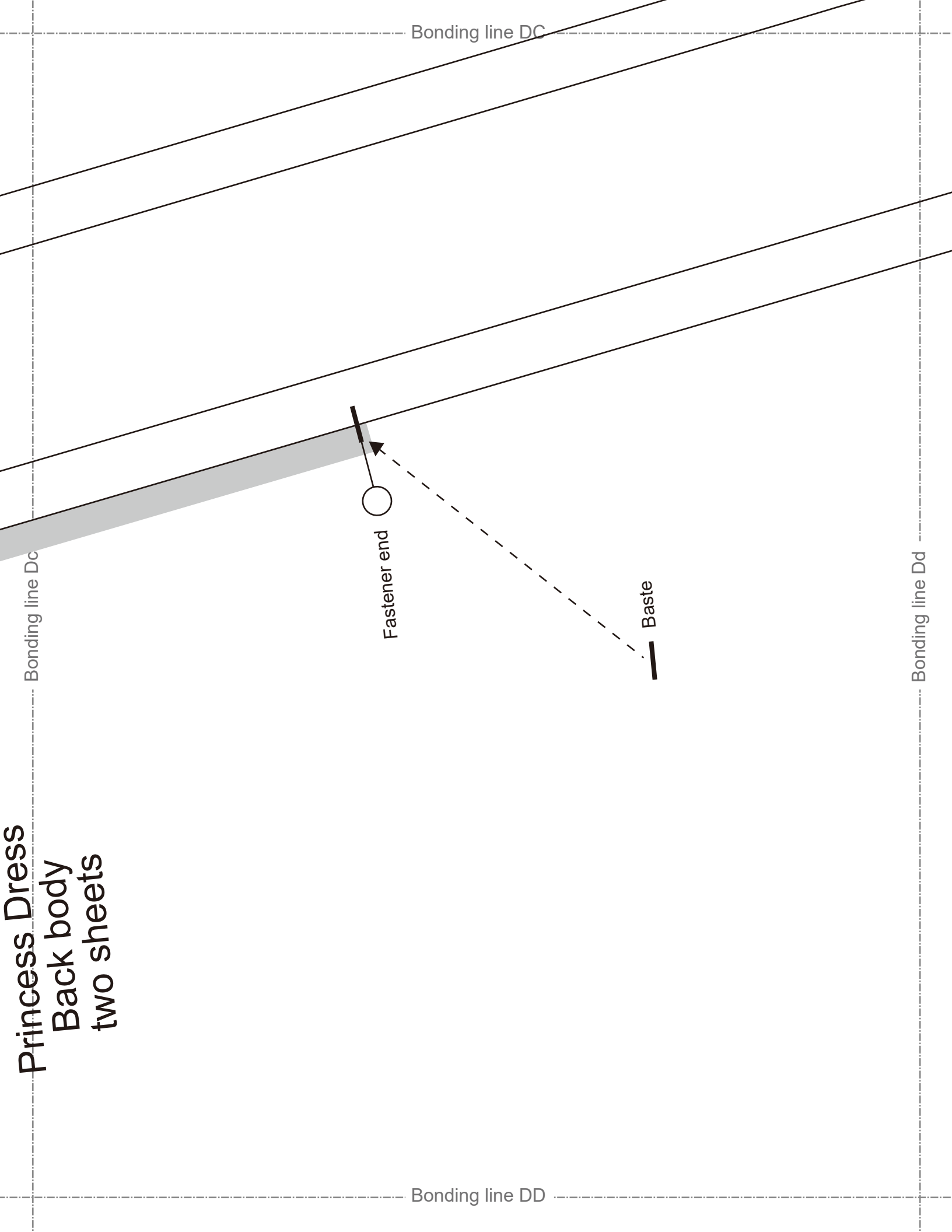
Bonding line Cd

Princess Dress  
Back body side



Bonding line DC

**Princess Dress**  
**Back body**  
**two sheets**

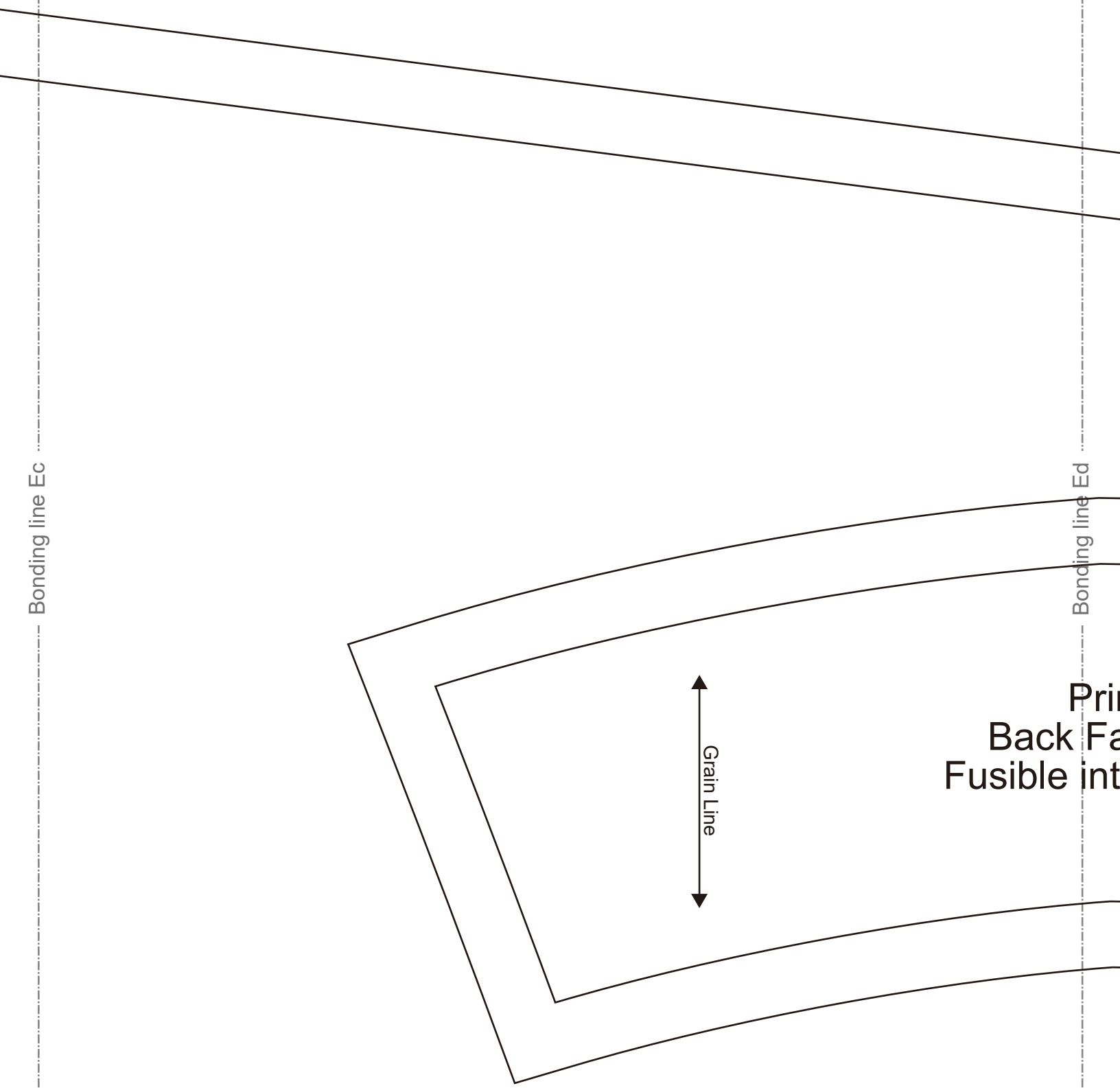


Bonding line DD

Bonding line Ec

Bonding line Ed

Bonding line DE



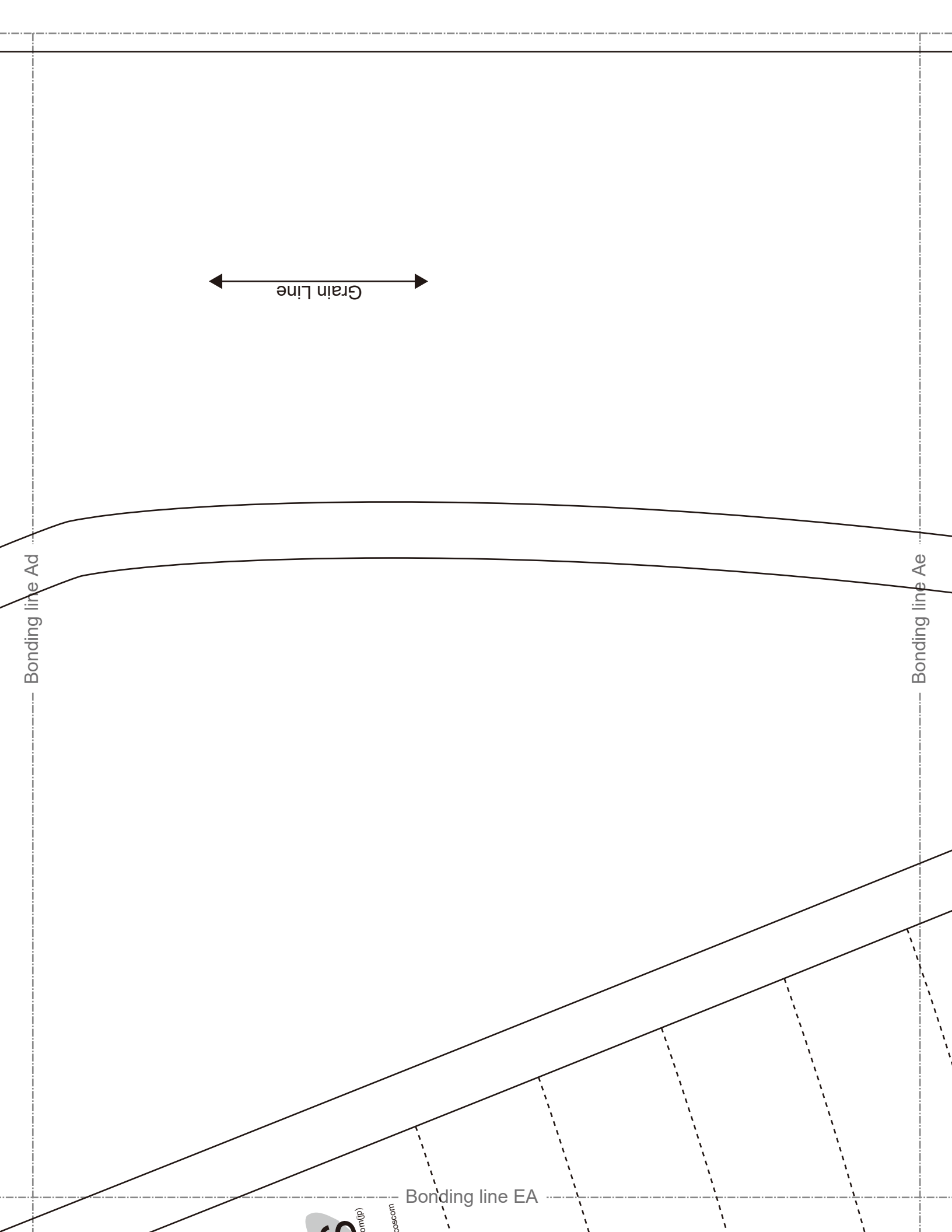
Prim  
Back Fa  
Fusible int

↔ Grain Line ↔

Bonding line Ad

Bonding line Ae

Bonding line EA



Bonding line Bd

Bonding line EA



9.44in cutline

8.26in cutline

7.07in cutline

Bonding line Be

Bonding line EB

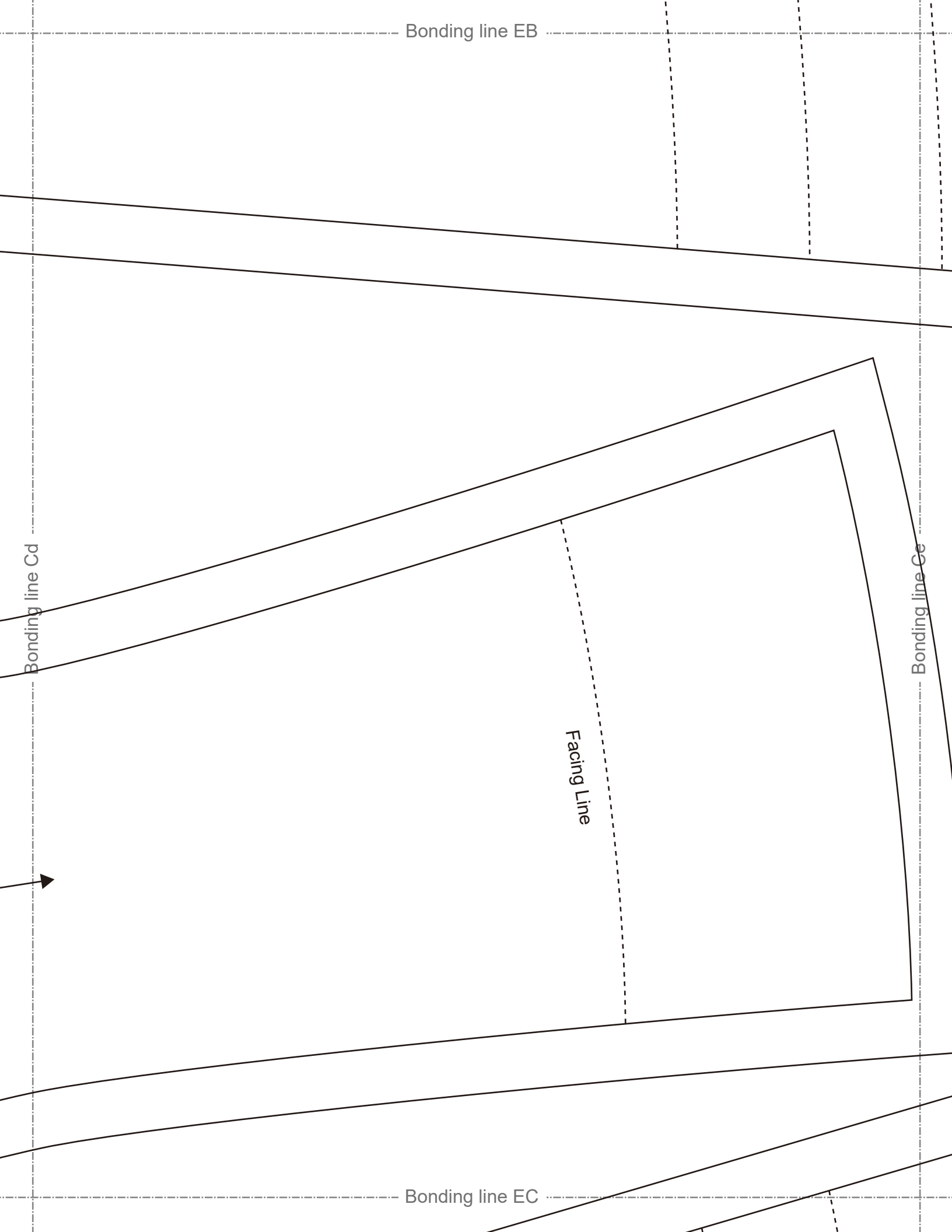
Bonding line EB

Bonding line Cd

Bonding line Ce

Facing Line

Bonding line EC



Bonding line Dd

# LADIES' <sup>size</sup> T

Bonding line EC

9.44in cutline

8.26in cutline

Bonding line De  
7.07in cutline

Bonding line ED



Bonding line ED

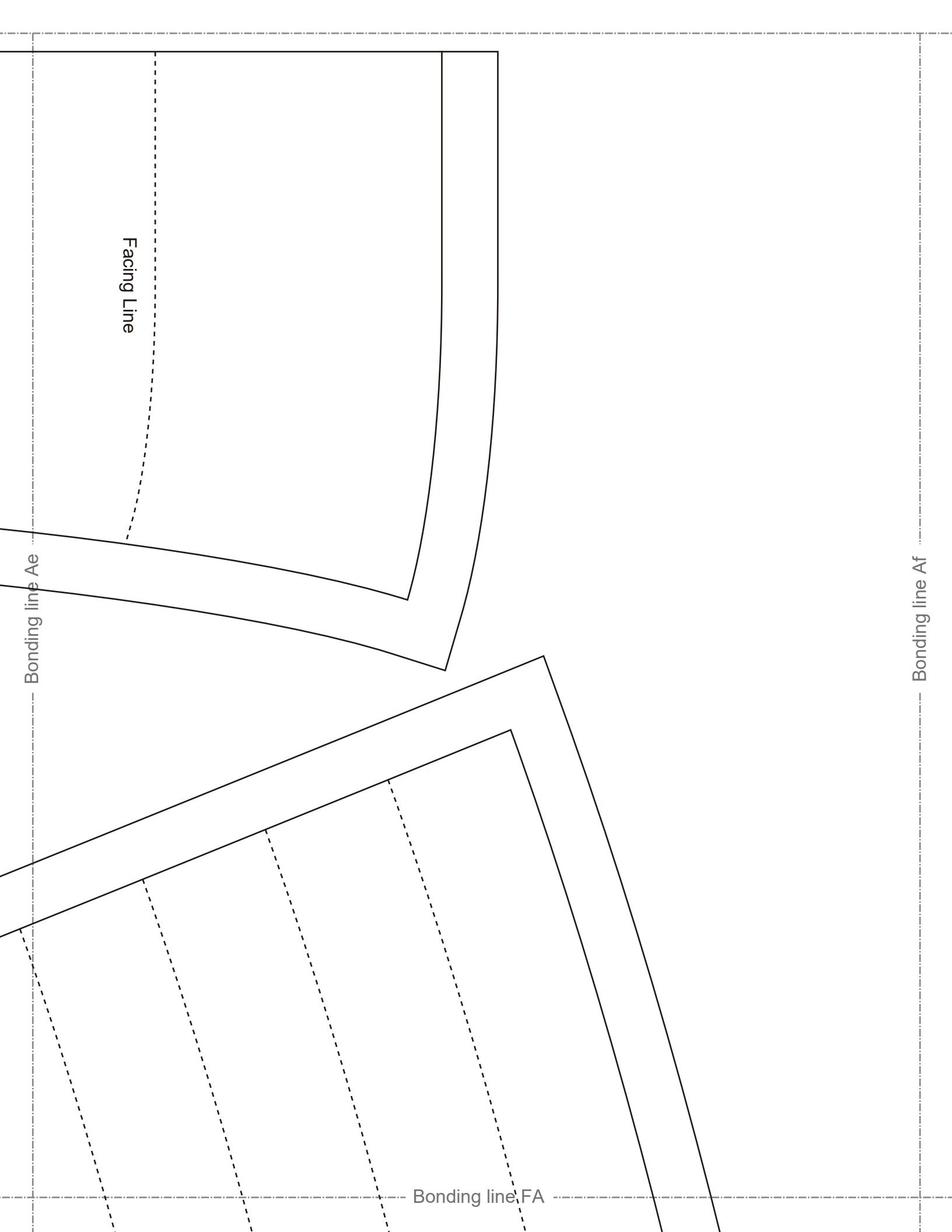
Bonding line Ed

Bonding line Ee

Princess Dress  
Back Facing two sheets  
Lining interlining two sheets

Seam allowance 1/2in.

Bonding line EE



Bonding line Be

5.9in outline

4.72in outline

3.54in outline

2.36in outline

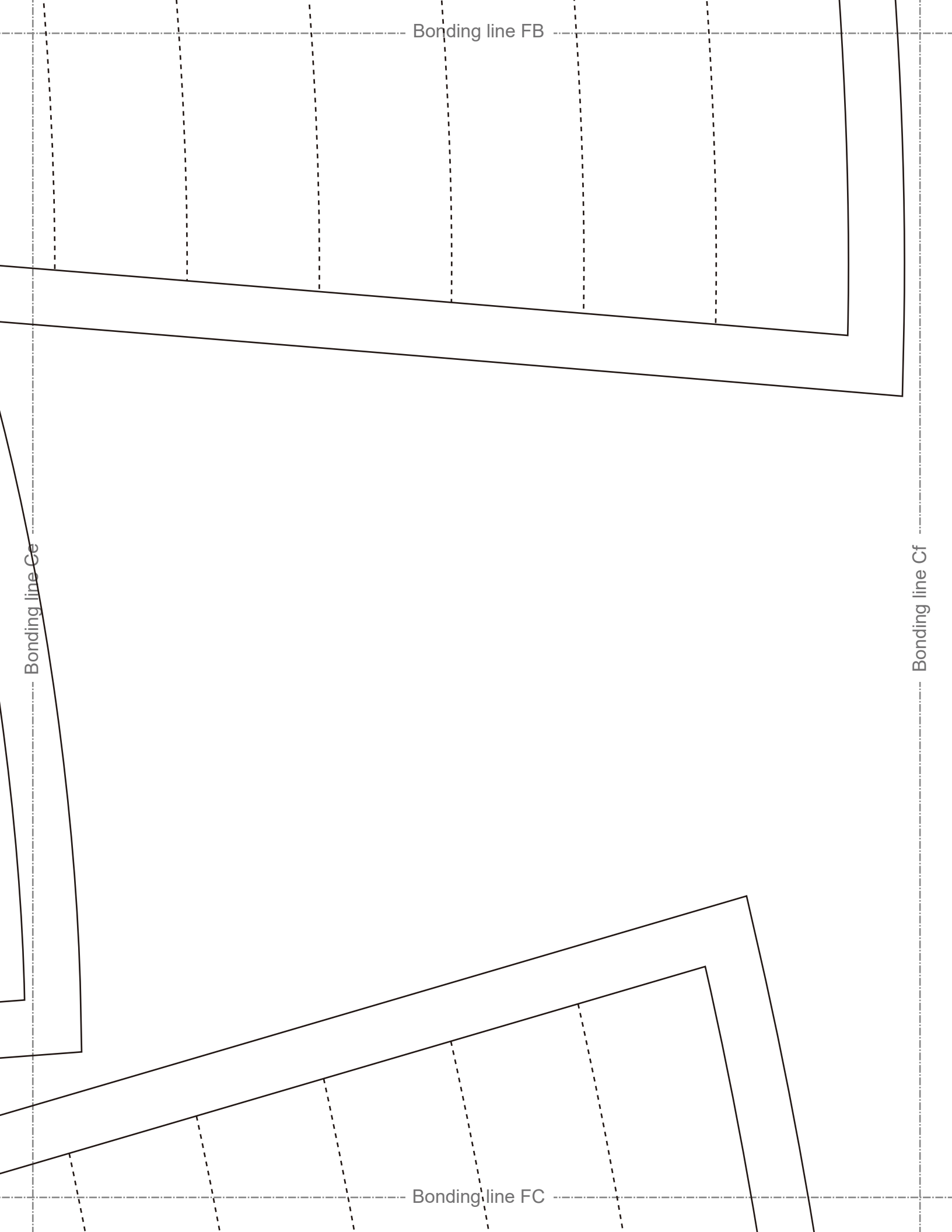
1.18in outline

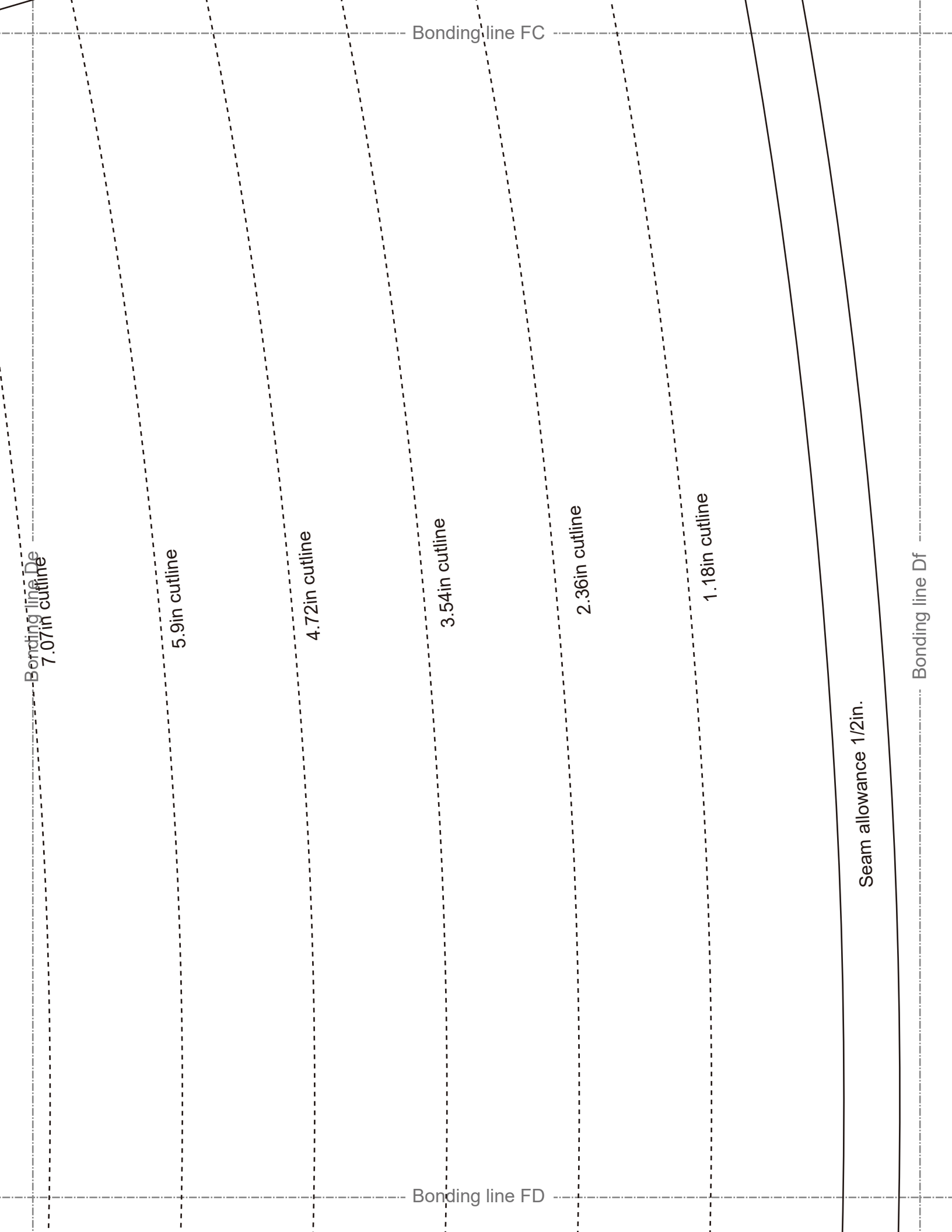
Seam allowance 1/2in.

Bonding line Bf

Bonding line FA

Bonding line FB





Bonding line Dc  
7.07in outline

5.9in outline

4.72in outline

3.54in outline

2.36in outline

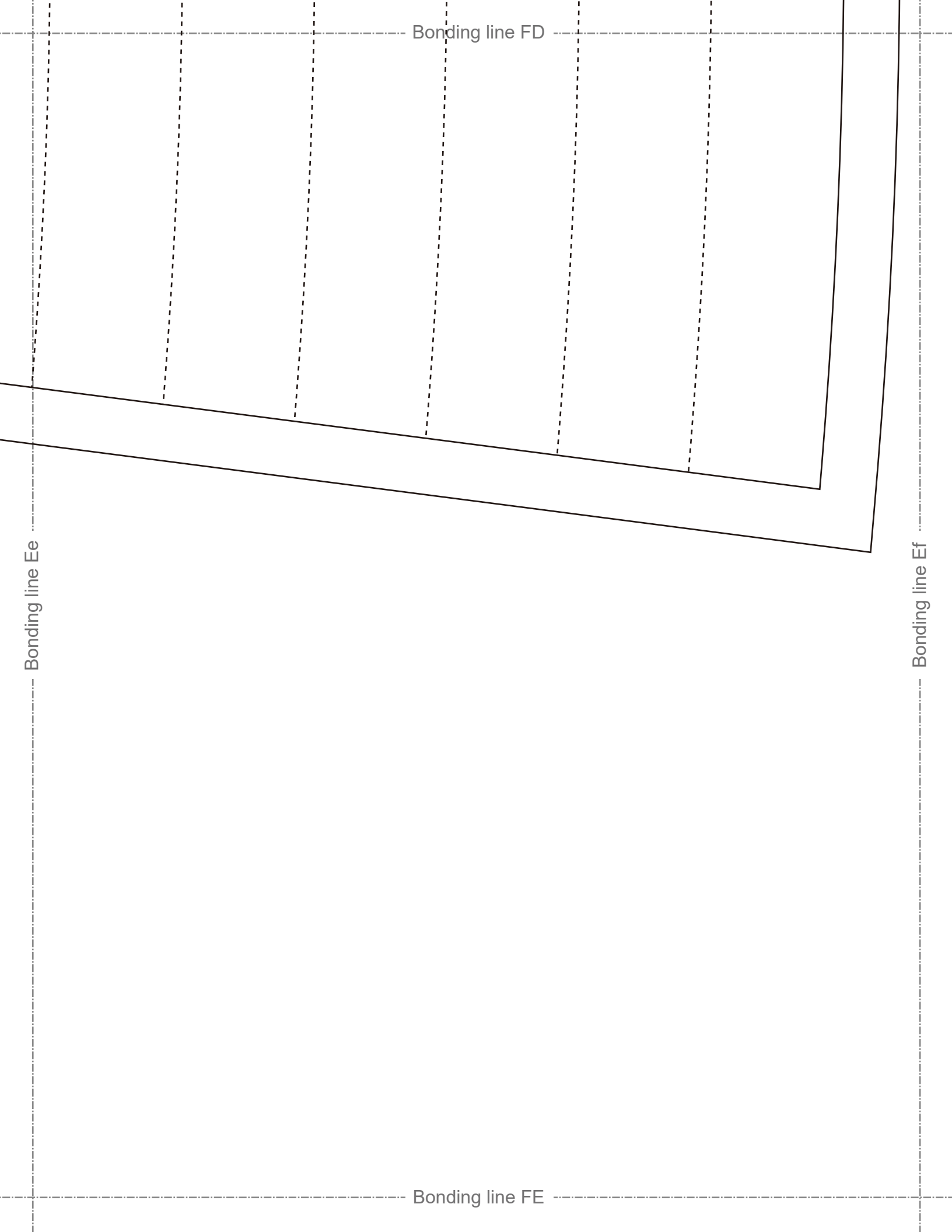
1.18in outline

Bonding line FC

Bonding line FD

Seam allowance 1/2in.

Bonding line Df



Bonding line FD

Bonding line Ee

Bonding line Ef

Bonding line FE