

[Home](#)  
[Back to Onepiecedress2 page](#)

Seam allowance 1/2in.



Bonding line Aa

Bonding line AA

Bonding line AA

Bonding line Ba

Seam allowance 1/2in.

Grain Line

Bonding line AB



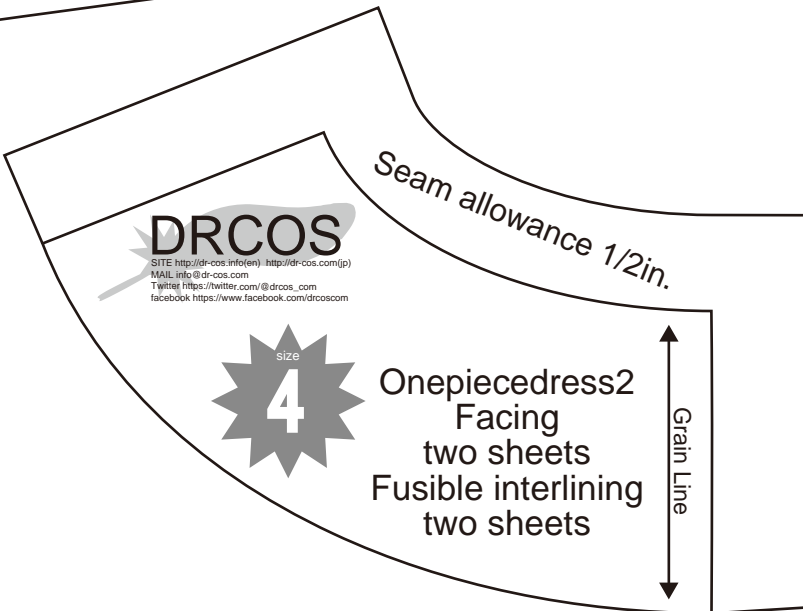
Bonding line Aa

Bonding line Ab

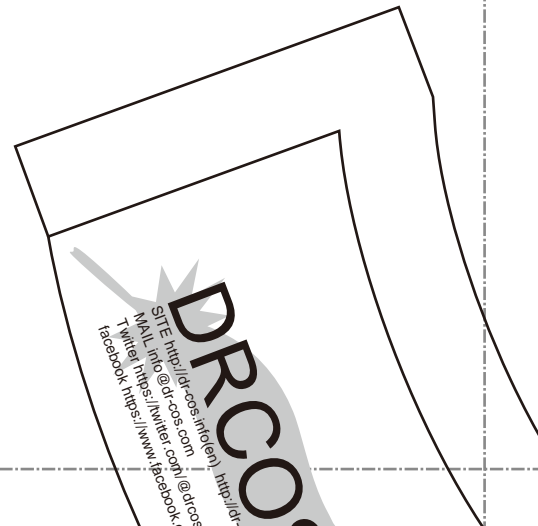


Onepiecedress2  
Front Body  
one sheets

# Children's **4** size



Bonding line BA



cos  
www.cos.com  
http://dr-cos.com/tp  
mailto:dr.cos.com  
www.facebook.com/dr.cos.com

size  
**4**

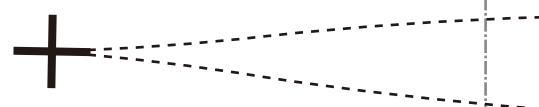
Bonding line BA

Bonding line Ba

Bonding line Bb

# Children's **4**<sup>size</sup>

Onpiecedress2  
Back Body  
two sheets

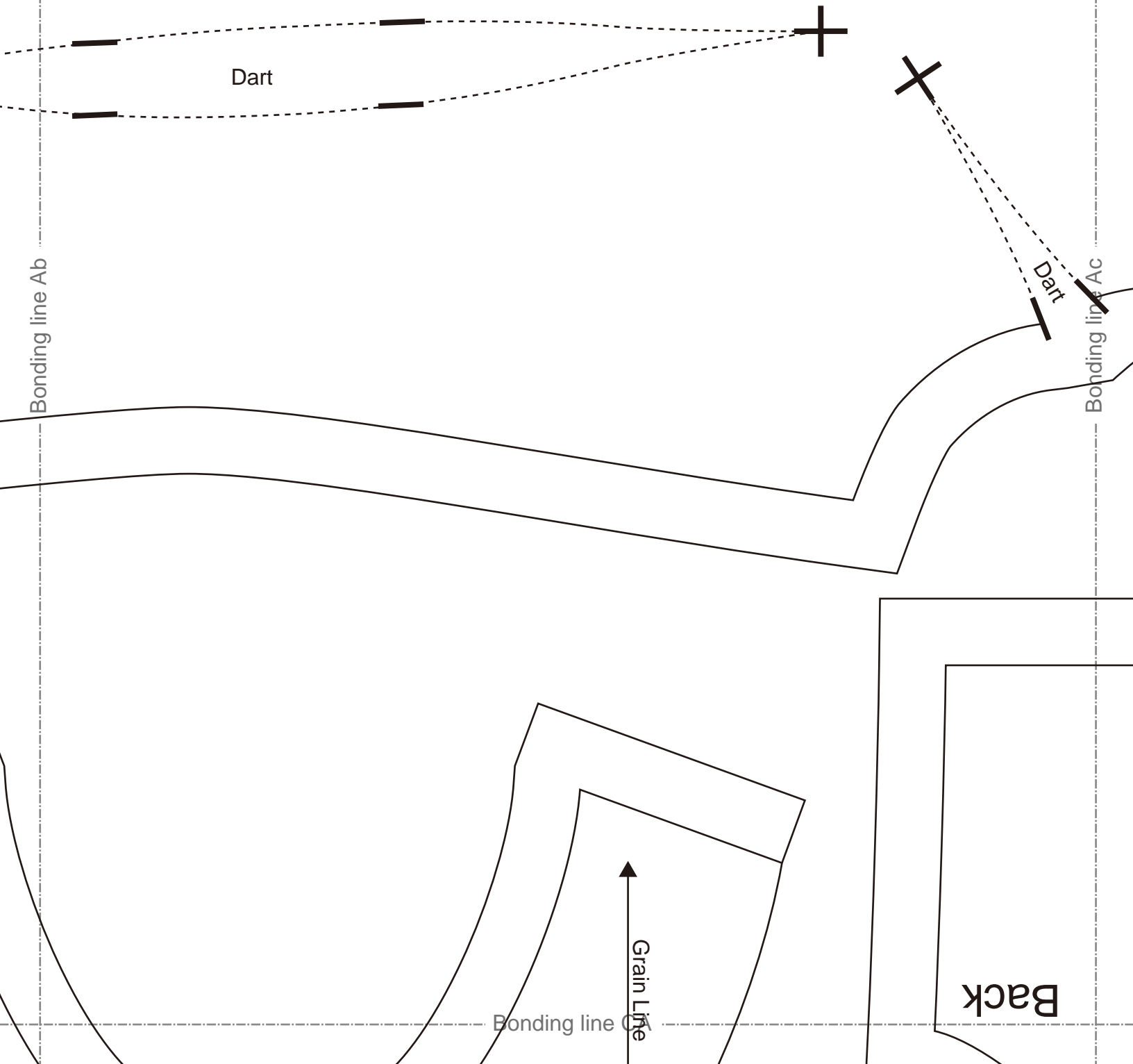


Zip position

Bonding line BB

# DRCOS

SITE <http://dr-cos.info/en> <http://dr-cos.com/fp>  
MAIL [info@dr-cos.com](mailto:info@dr-cos.com)  
TWITTER [@dr-cos.com](https://twitter.com/dr-cos.com)  
FACEBOOK <https://www.facebook.com/drcoscom>



Back

Bonding line CA

Seam allowance 1/2in.



Onepiecedress2  
Facing  
One sheets  
Fusible interlining  
One sheets

Bonding line Bb

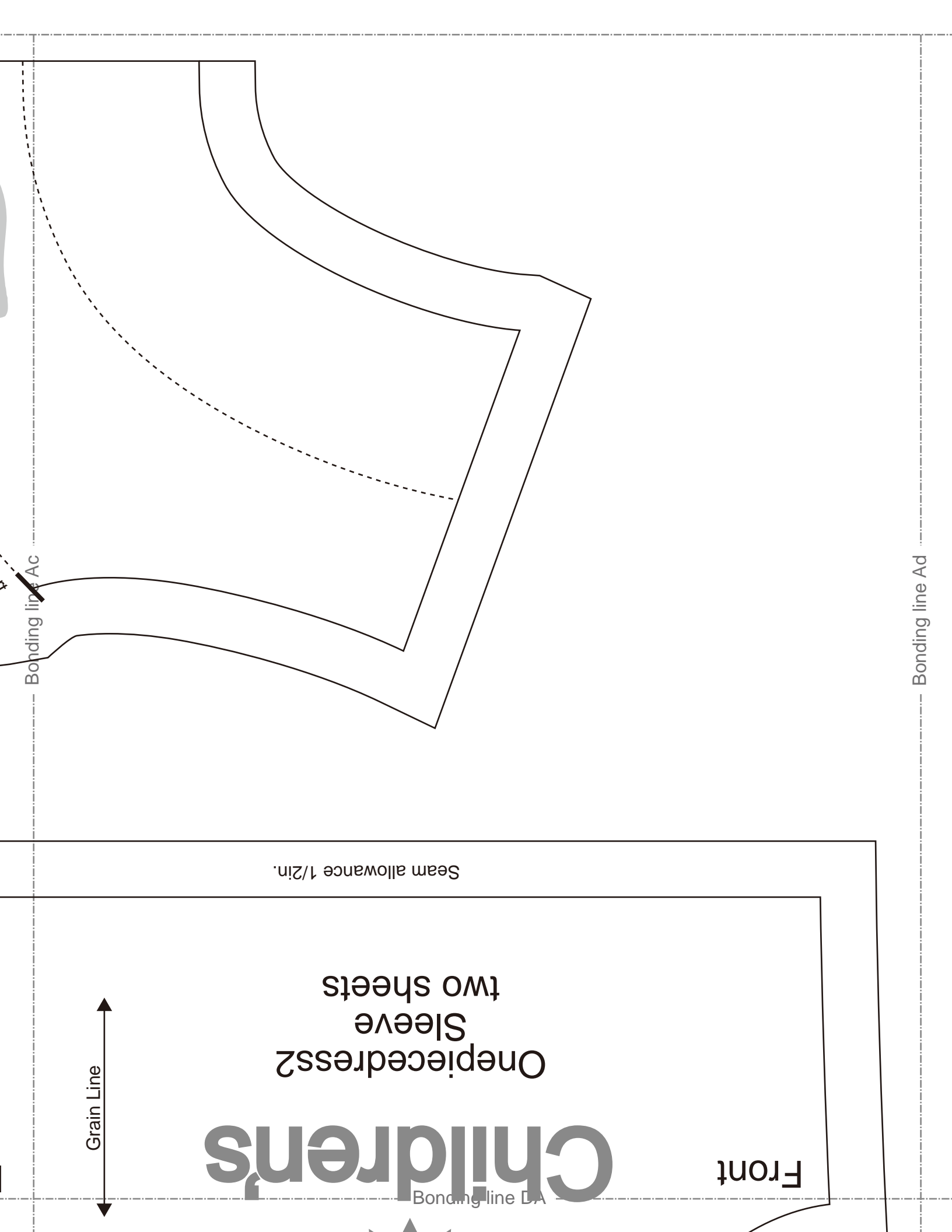
Baste

Bonding line Bc

Dart



Bonding line CB



Bonding line Ac

Bonding line Ad

Seam allowance 1/2 in.

One piece dress 2  
Sleeve  
two sheets

Grain Line

Children's

Bonding line DA

Front



**DRCOS**  
SITE [http://dr-cos.info\(en\)](http://dr-cos.info(en)) [http://dr-cos.com\(lp\)](http://dr-cos.com(lp))  
MAIL [info@dr-cos.com](mailto:info@dr-cos.com)  
Twitter [@drcos\\_com](https://twitter.com/@drcos_com)  
facebook <https://www.facebook.com/drcoscom>

**DRCOS**  
SITE [http://dr-cos.info\(en\)](http://dr-cos.info(en)) [http://dr-cos.com\(lp\)](http://dr-cos.com(lp))  
MAIL [info@dr-cos.com](mailto:info@dr-cos.com)  
Twitter [@drcos\\_com](https://twitter.com/@drcos_com)  
facebook <https://www.facebook.com/drcoscom>