

[Home](#)

[Back to Onepiecedress2 page](#)

Seam allowance 1/2in.

← Grain Line

Bonding line AA

Bonding line AA

Bonding line AA

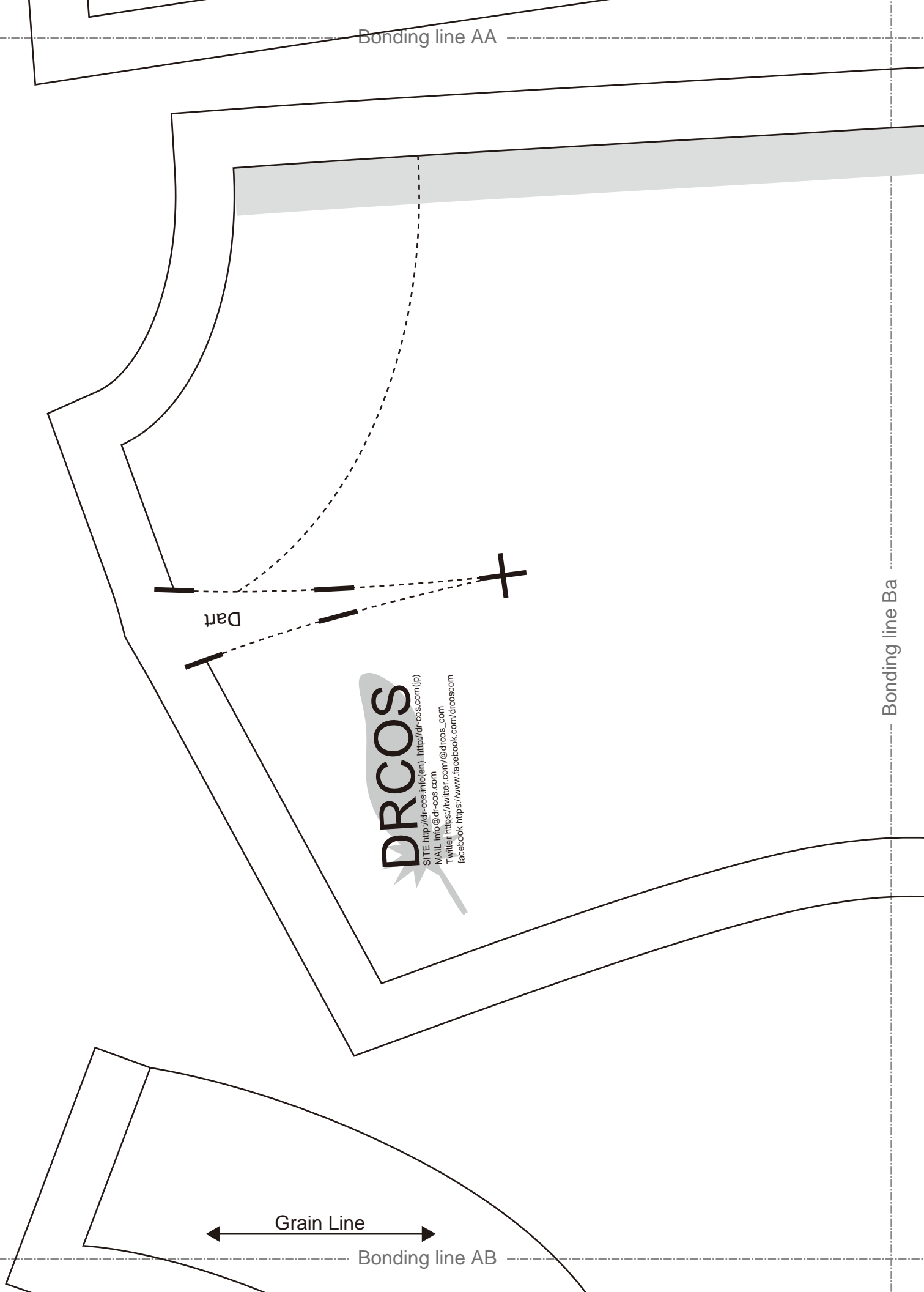
Dart

**DRCOS**  
SITE <http://dr-cos.info/en> <http://dr-cos.com/ip>  
MAIL [info@dr-cos.com](mailto:info@dr-cos.com)  
Twitter [@drcos.com](https://twitter.com/@drcos.com)  
facebook <https://www.facebook.com/drcos.com>

Grain Line

Bonding line AB

Bonding line Ba

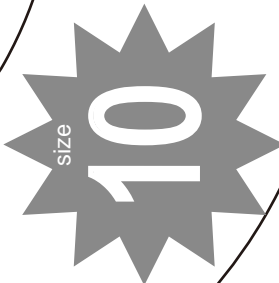


Grain Line

Bonding line AB

Seam allowance 1/2in.

Onepiecedress2  
Facing  
One sheets  
Fusible interlining  
One sheets



**DRCOS**

SITE <http://dr-cos.info/en> <http://dr-cos.com/jp>  
MAIL [info@dr-cos.com](mailto:info@dr-cos.com)  
Twitter [https://twitter.com/@drcos\\_com](https://twitter.com/@drcos_com)  
facebook <https://www.facebook.com/drcoscom>

**DRCOS**

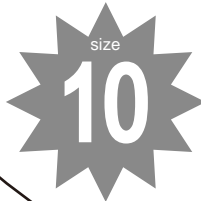
Bonding line AC

SITE <http://dr-cos.info/en> <http://dr-cos.com/jp>  
MAIL [info@dr-cos.com](mailto:info@dr-cos.com)  
Twitter [https://twitter.com/@drcos\\_com](https://twitter.com/@drcos_com)  
facebook <https://www.facebook.com/drcoscom>

Seam allowance 1/2in.

**DRCOS**

SITE <http://dr-cos.info/en> <http://dr-cos.com/jp>  
MAIL [info@dr-cos.com](mailto:info@dr-cos.com)  
Twitter [https://twitter.com/@drcos\\_com](https://twitter.com/@drcos_com)  
facebook <https://www.facebook.com/drcoscom>



Onepiecedress2  
Facing  
two sheets  
Fusible interlining  
two sheets

Grain Line

Bonding line AC

# Children's <sup>size</sup> 10

Onepiecedress2  
Front Body  
one sheets



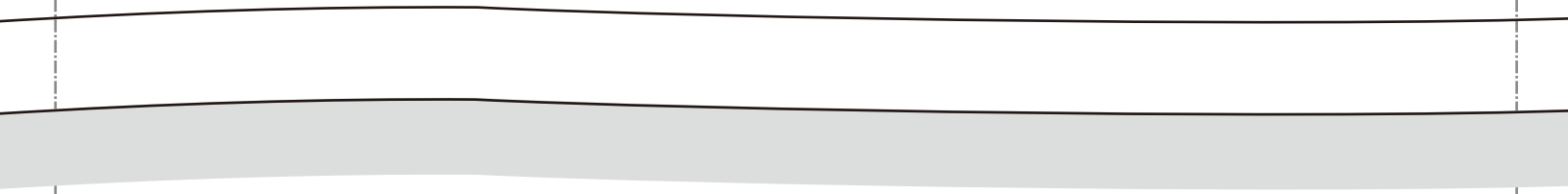
Bonding line Ab

Bonding line BA

Bonding line Aa



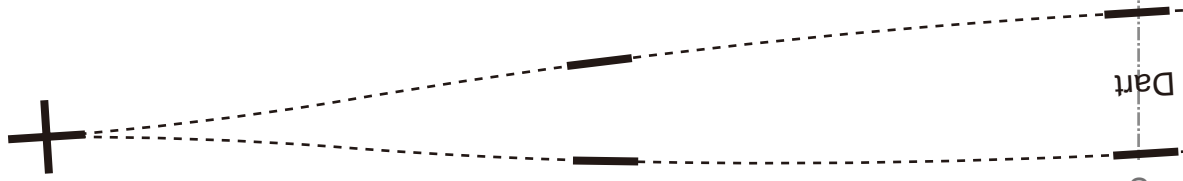
Bonding line BA



Bonding line Ba

Dart

Bonding line Bb

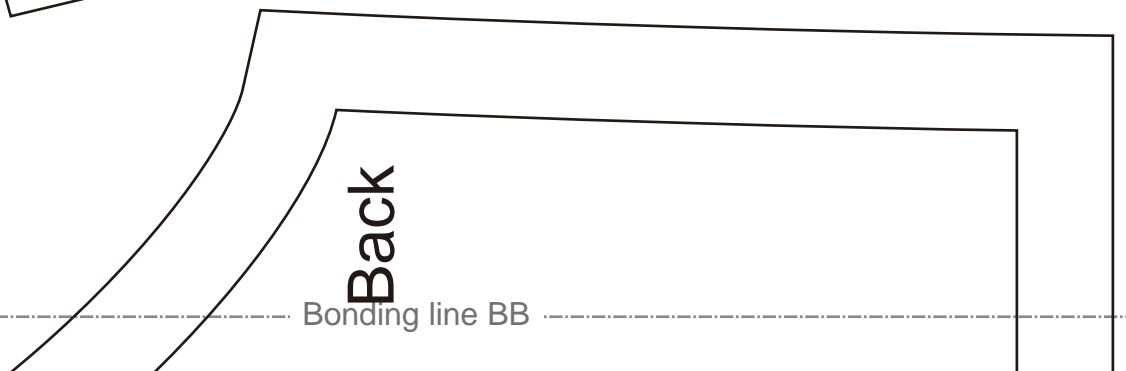


Baste

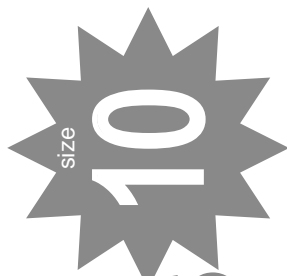


Back

Bonding line BB



Bonding line BB



# Children's

Front

Onepiecedress2  
Sleeve  
two sheets

Bonding line BC

Seam allowance 1/2in.

Bonding line Cb



Bonding line Ab

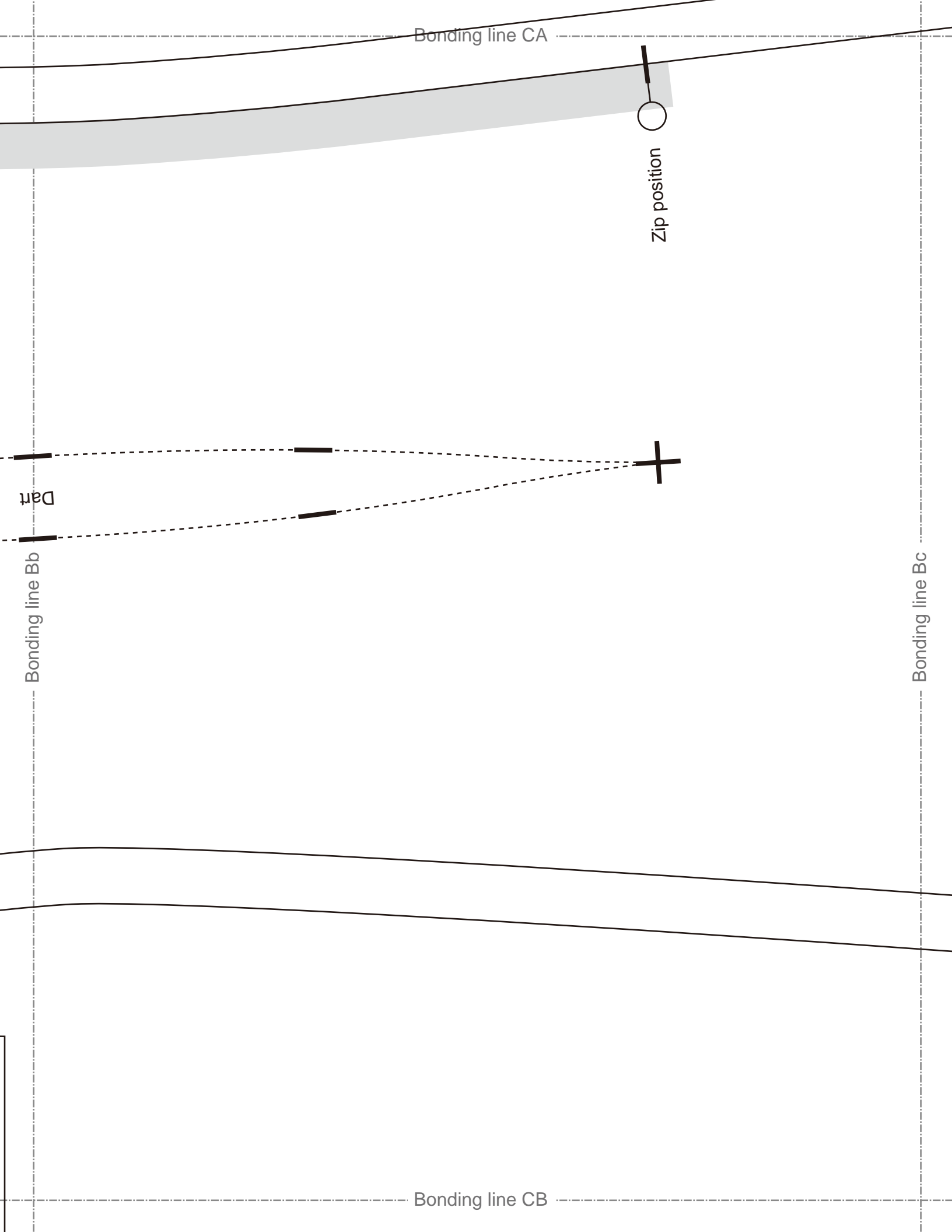
Bonding line Ac

Dart

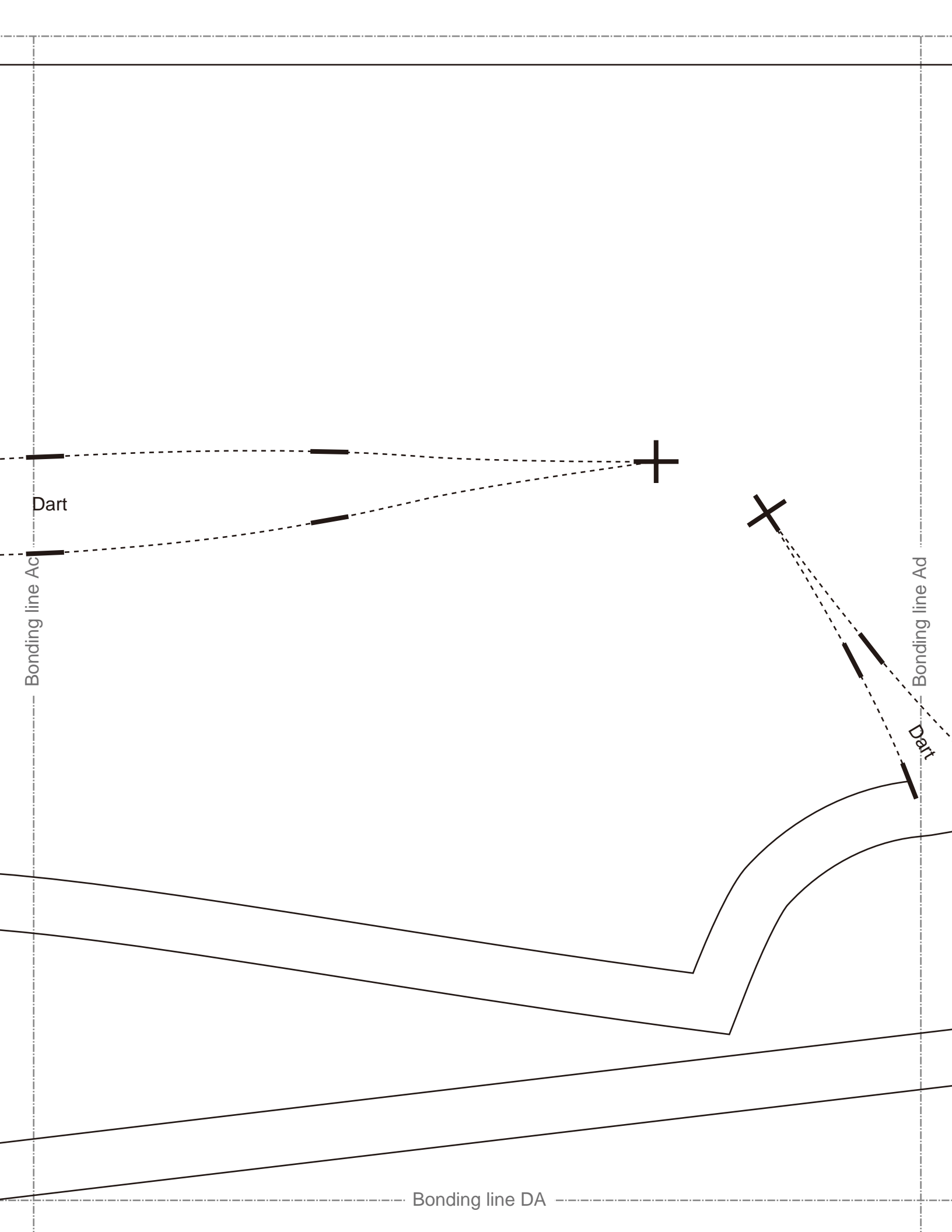


Bonding line CA









Bonding line Bc

Bonding line DA

# Children's <sup>size</sup> 10

Onepiecedress2  
Back Body  
two sheets

Grain Line

Bonding line Bd

Bonding line DB

MAIL [info@dr-cos.com](mailto:info@dr-cos.com)  
Twitter [@dr-cos\\_com](https://twitter.com/dr-cos_com)  
facebook <https://www.facebook.com/dr-cos.com>

**DRCOS**

SITE <http://dr-cos.info/en/> <http://dr-cos.com/jp/>

Bonding line Ad

Dart

Bonding line EA

Bonding line EA

ne

Bonding line Bd

Seam allowance 1/2in.

Bonding line EB

