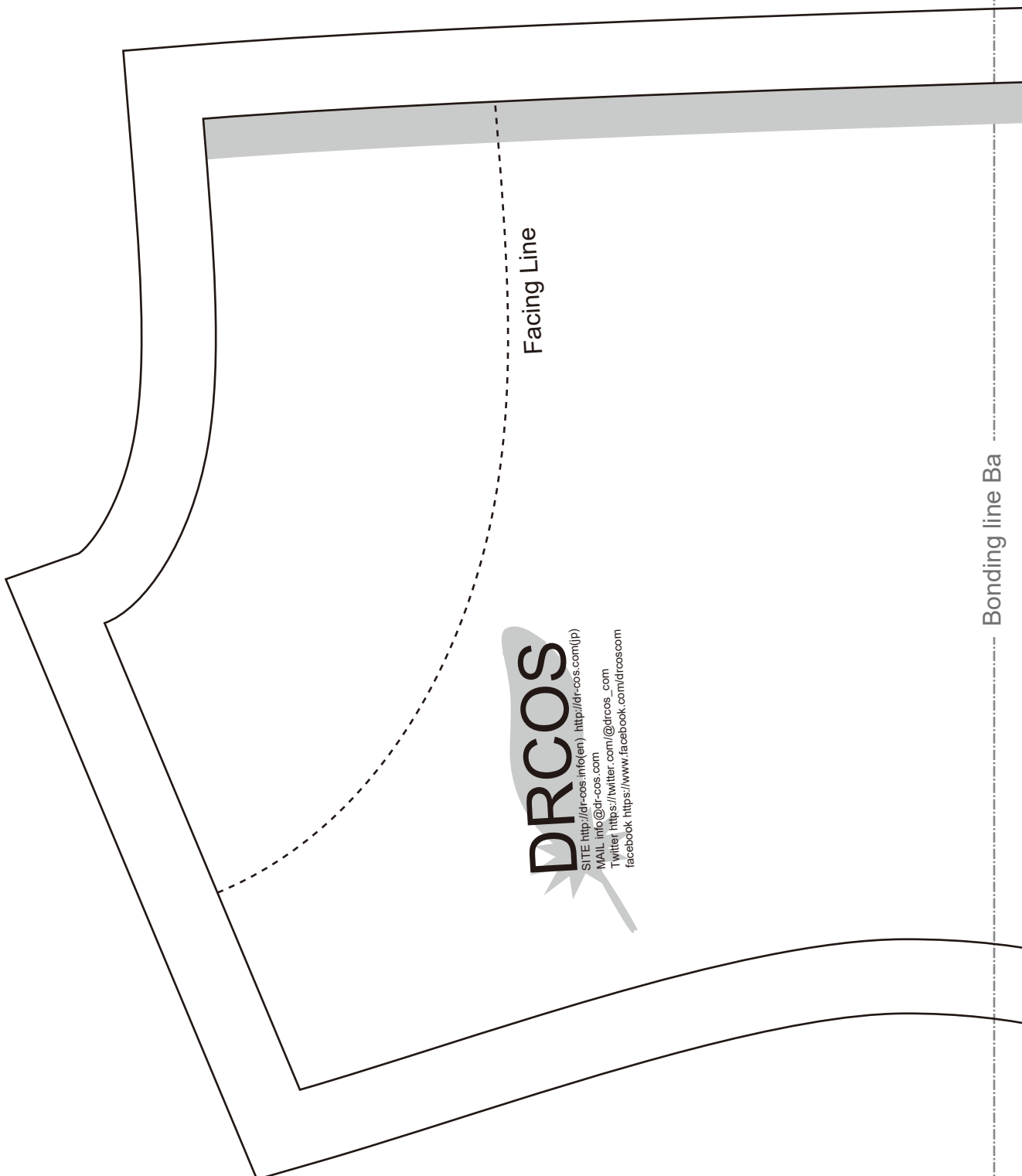


Seam allowance 1/2in.

Bonding line AA

Bonding line Aa

Bonding line AA

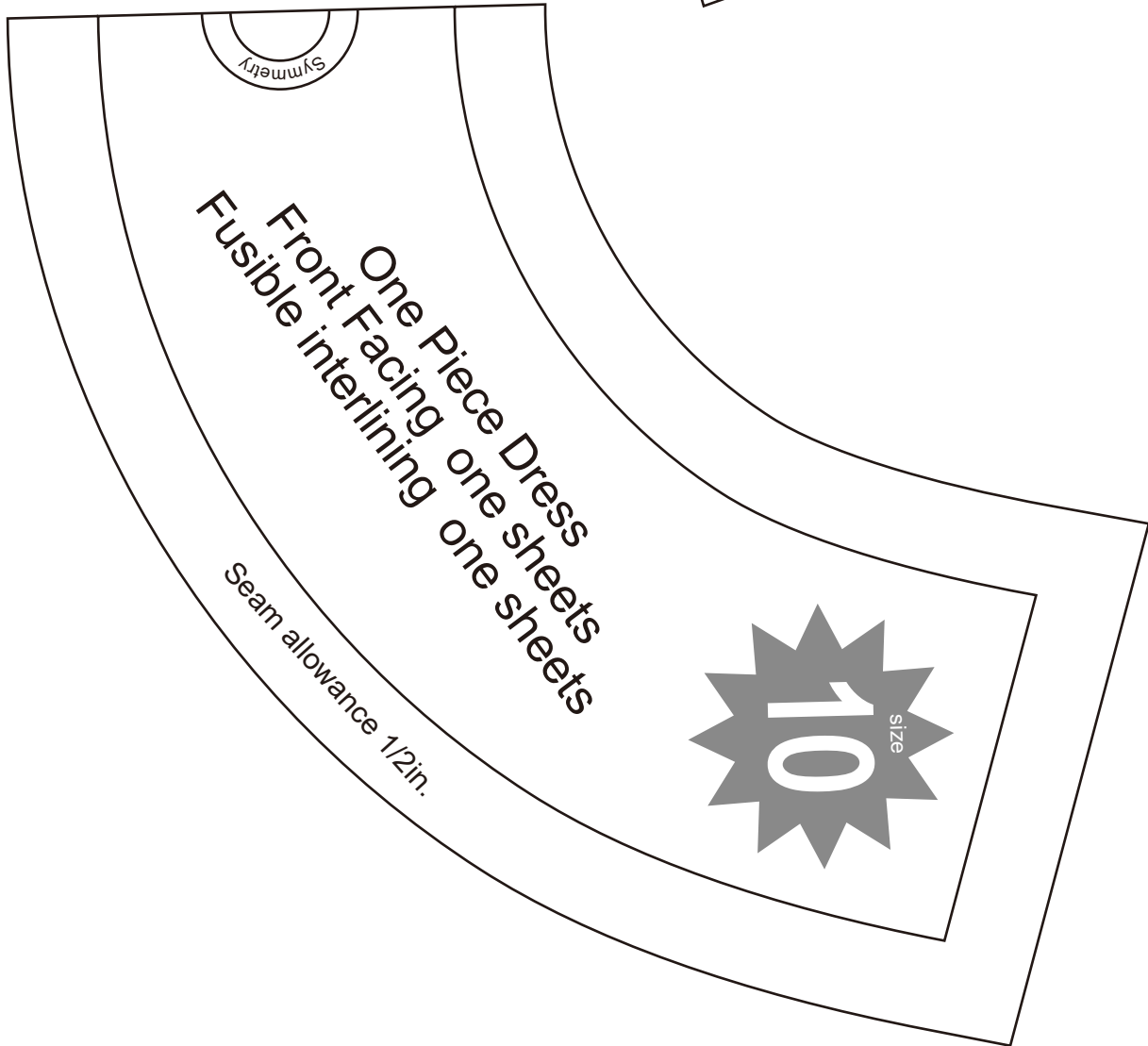
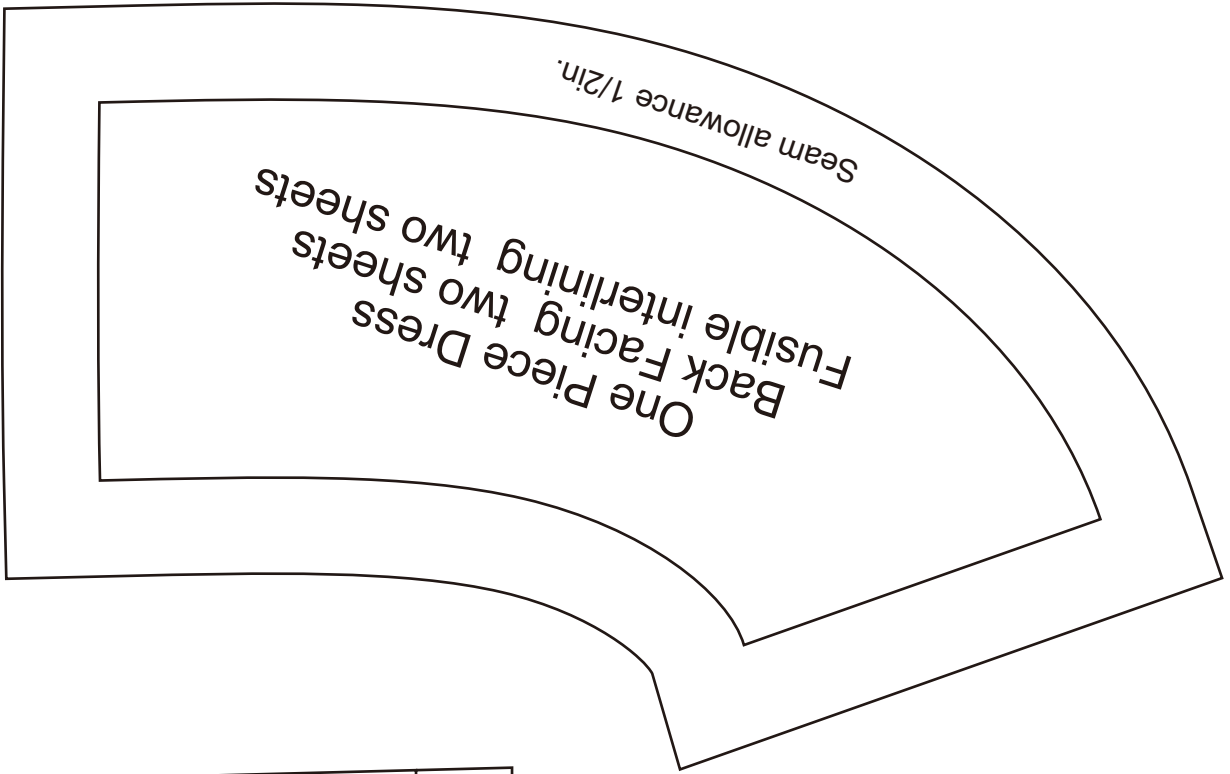


Facing Line

Bonding line Ba

**DRCOS**  
SITE <http://dr-cos.info/en> <http://dr-cos.com/p>  
MAIL [info@dr-cos.com](mailto:info@dr-cos.com)  
Twitter [https://twitter.com/drcos\\_com](https://twitter.com/drcos_com)  
facebook <https://www.facebook.com/drcoscom>

Bonding line AB



# Children's <sup>size</sup> 10

One Piece Dress

Front body

one sheets



Bonding line BA

Fusible Stay tape

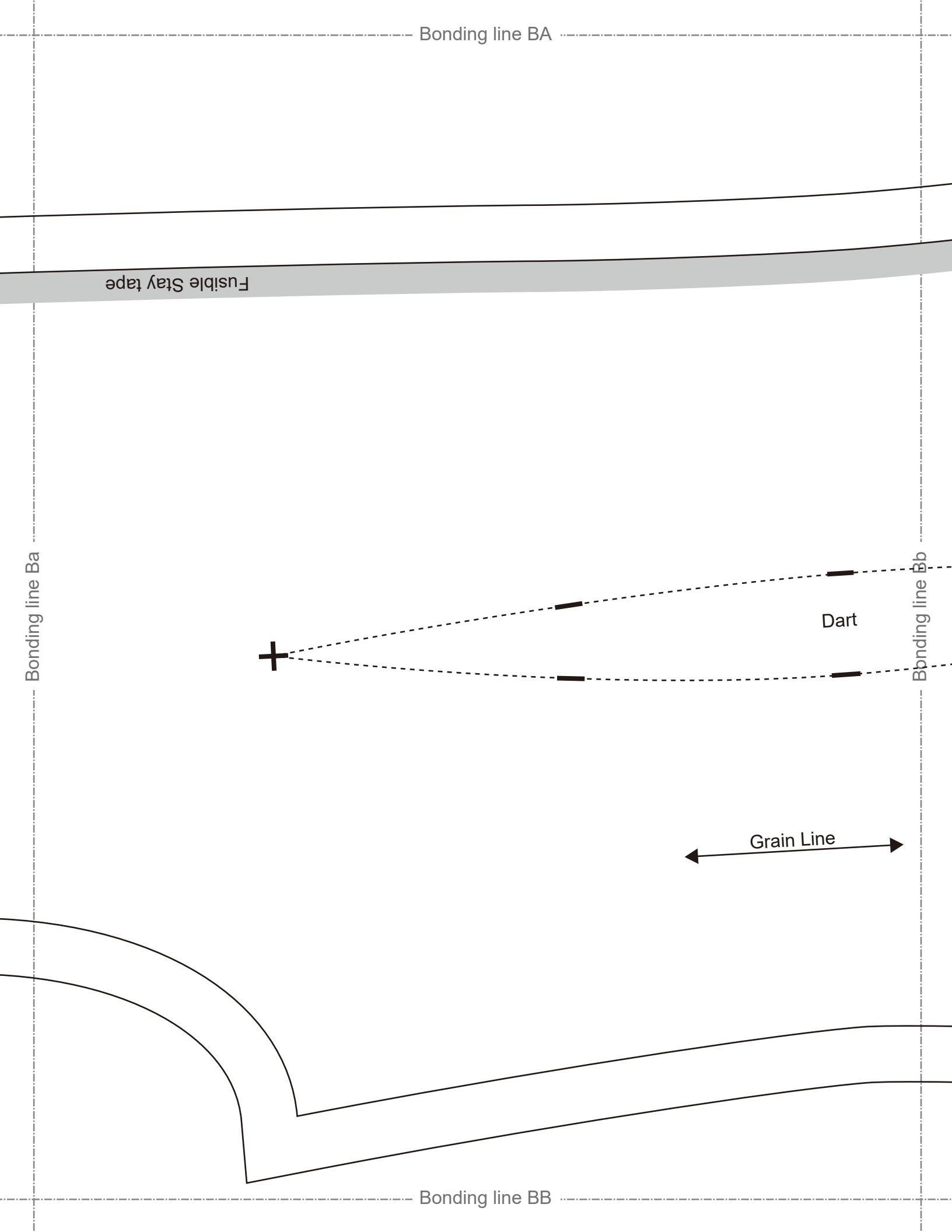
Bonding line Ba

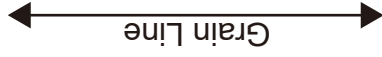
Bonding line Bb

Dart

Grain Line

Bonding line BB



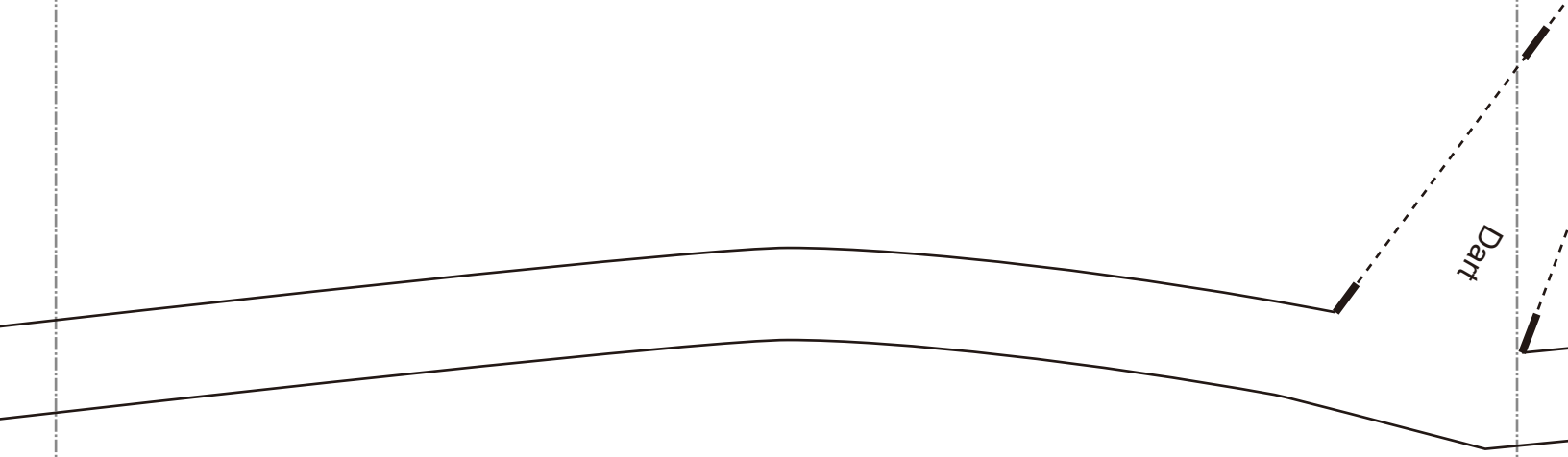


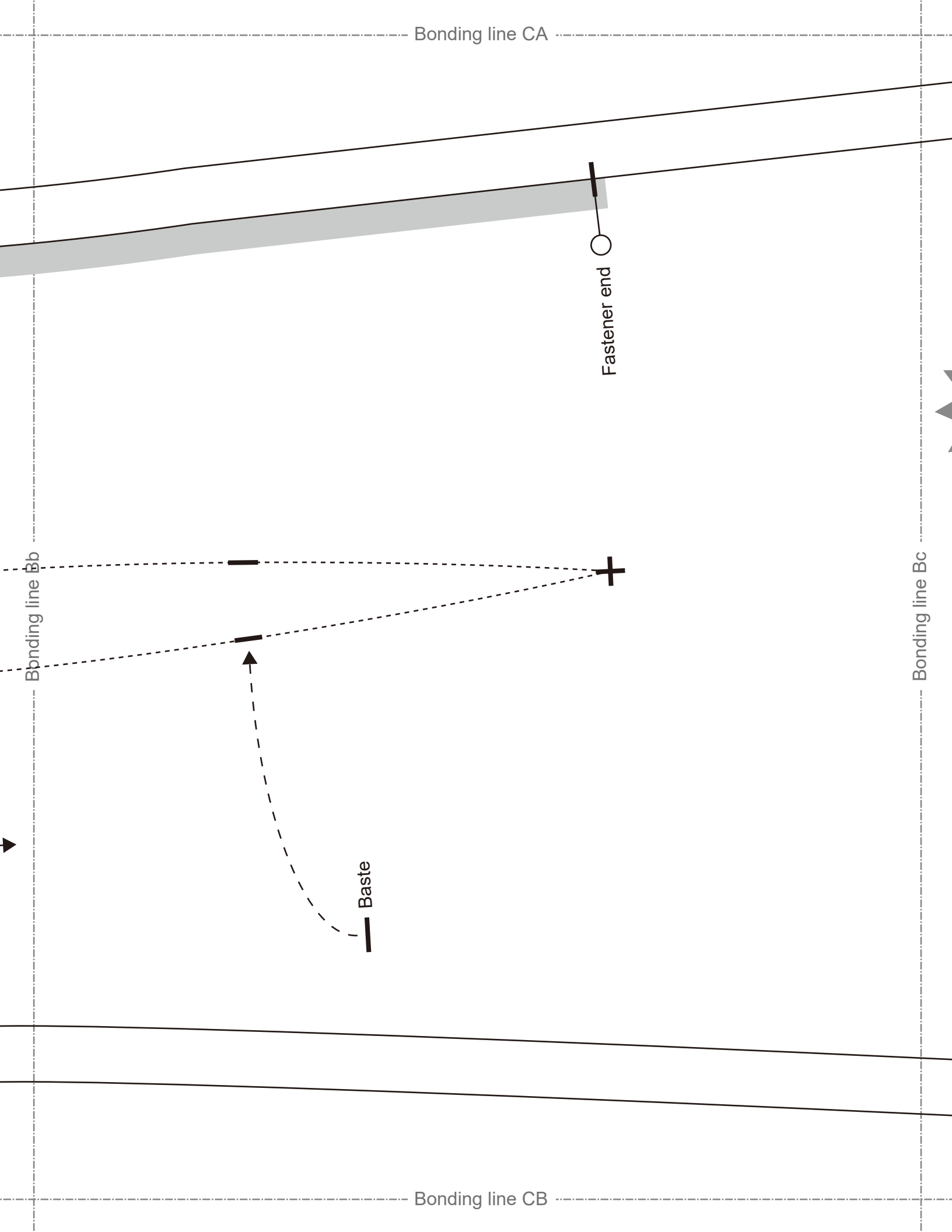
Bonding line Ab

Bonding line Ac

Dart

Bonding line CA





# DRCOS

SITE <http://dl-cos.info/en> (<http://dl-cos.com/fr>)

MAIL [info@dl-cos.com](mailto:info@dl-cos.com)

Twitter [https://twitter.com/drcos\\_com](https://twitter.com/drcos_com)

facebook <https://www.facebook.com/drcoscom>

Facing Line

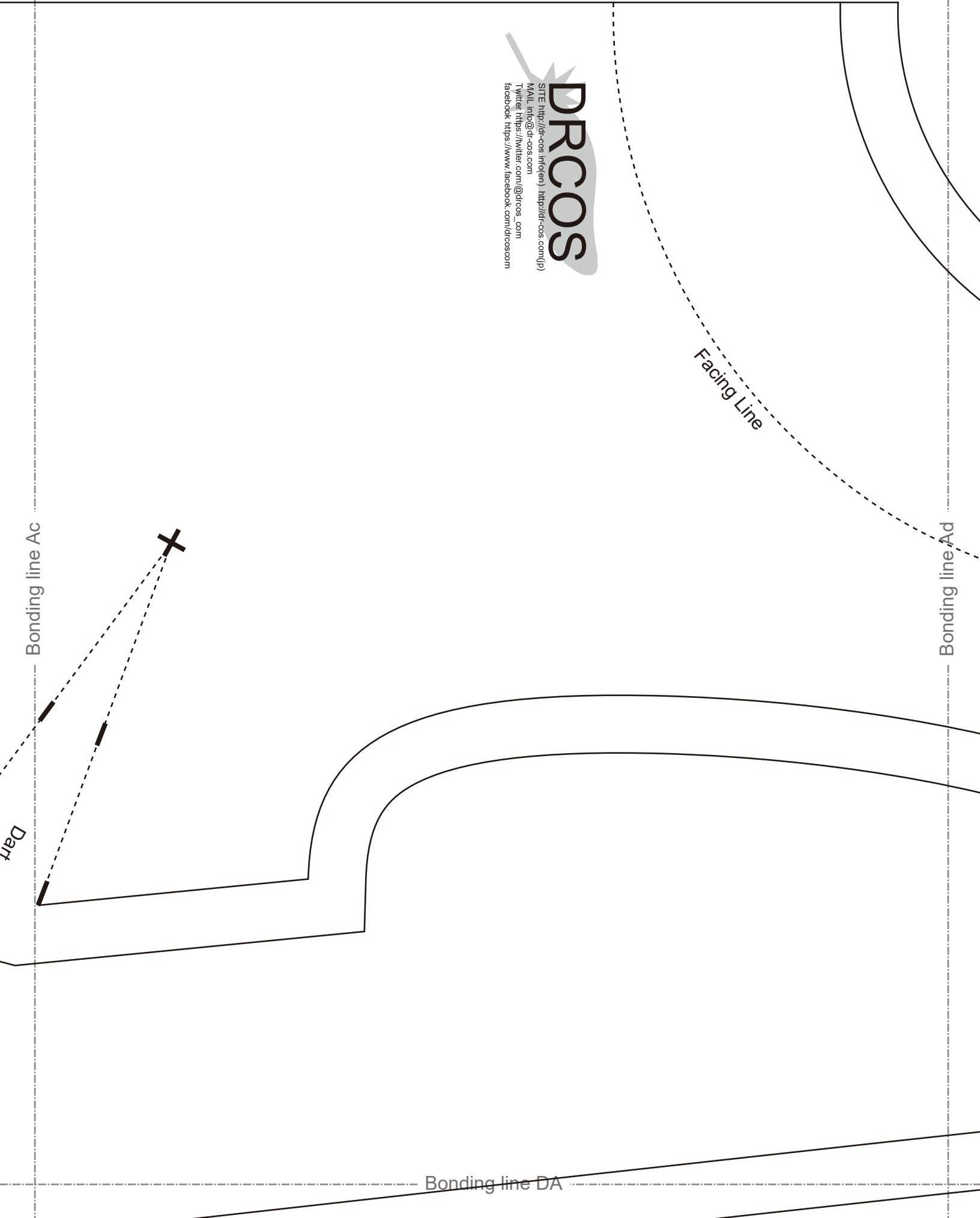
Bonding line Ad

Bonding line Ac

Bonding line DA



DA





Bonding line Bc

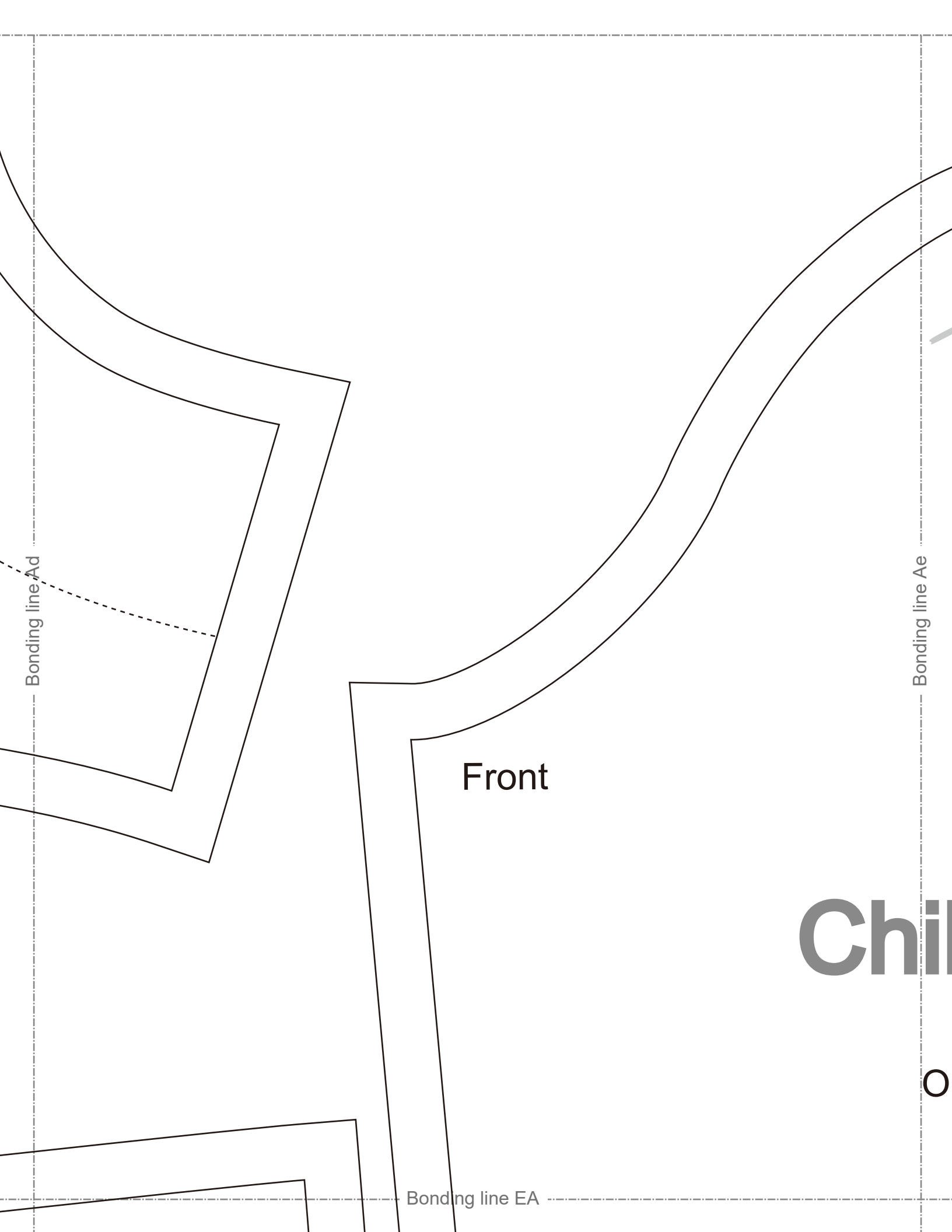
Bonding line DA

# Children's <sup>size</sup> 10

One Piece Dress  
Back body  
two sheets

Bonding line Bd

Bonding line DB



Bonding line Ad

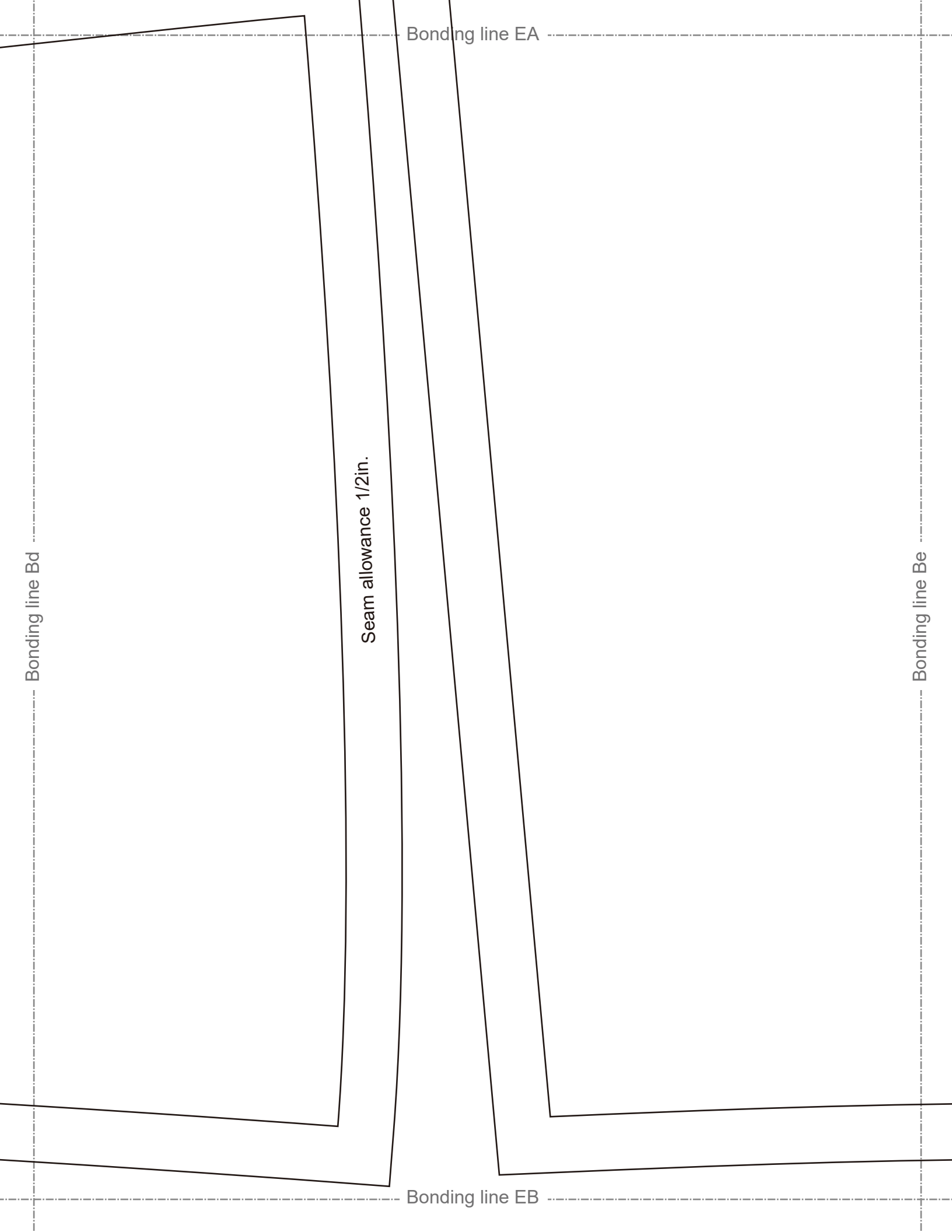
Bonding line Ae

Bonding line EA

Front

Child

O



Bonding line Bd

Bonding line EA

Seam allowance 1/2in.

Bonding line EB

Bonding line Be

**DRCOS**

SITE [http://dr-cos.info\(en\)](http://dr-cos.info(en)) [http://dr-cos.com\(jp\)](http://dr-cos.com(jp))  
MAIL [info@dr-cos.com](mailto:info@dr-cos.com)  
Twitter [https://twitter.com/drcos\\_com](https://twitter.com/drcos_com)  
facebook <https://www.facebook.com/drcoscom>

Bonding line Ae

Back

children's **size 10**

One Piece Dress  
Sleeve  
two sheets

Bonding line FA

two sheets

Bonding line FA

Bonding line Be



Seam allowance 1/2in.

Bonding line FB

