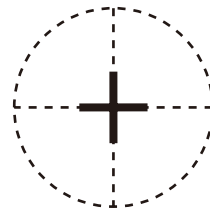
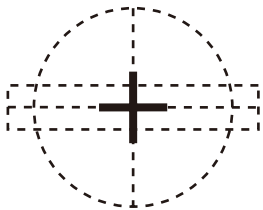
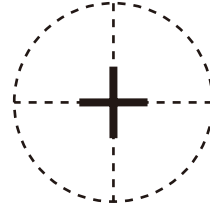
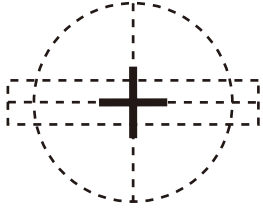
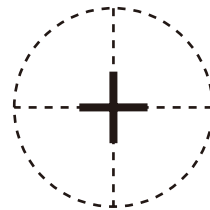
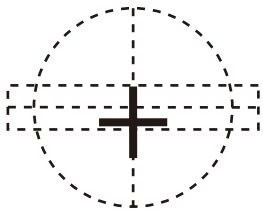


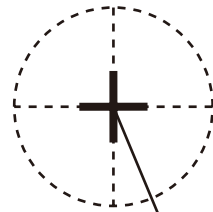
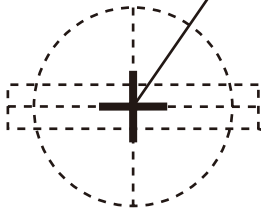
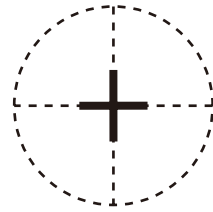
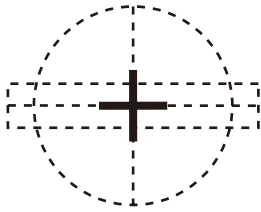
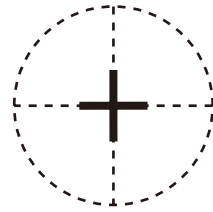
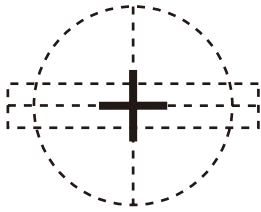
Seam allowance 1/2in.



Napoleon Jacket
Front body
two sheets



Bonding line Aa



Center position

Left side of the front is button only.

any buttons and buttonholes on the right side of the front

Button & Buttonhole position

Button position

Bonding line AB

Center position

Bonding line Ba

Bonding line AB

Collar position

Facing Line

Bonding line Ca

Facing Line

DRCOS

SITE [http://dr-cos.info\(en\)](http://dr-cos.info(en)) [http://dr-cos.com\(jp\)](http://dr-cos.com(jp))

MAIL info@dr-cos.com

Twitter [@drcos_com](https://twitter.com/@drcos_com)

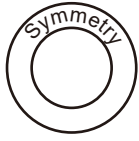
facebook <https://www.facebook.com/drcoscom>

LADIES' **LL** size

Bonding line AC

Bonding line AC

Napoleon Jacket Back body one sheets



Bonding line AD

Bonding line Da

LA

Strain Line



Bonding line AD

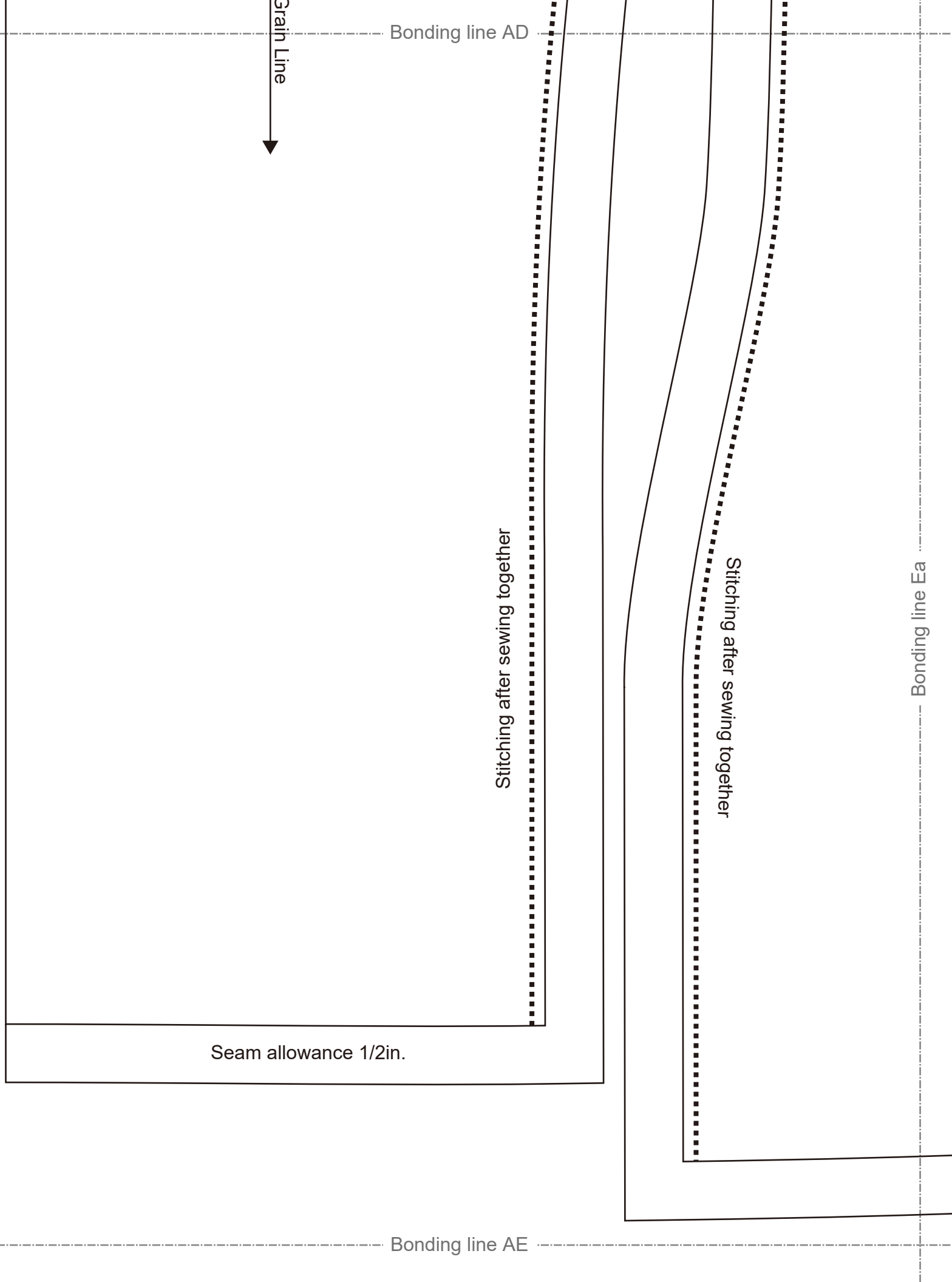
Bonding line AE

Stitching after sewing together

Stitching after sewing together

Bonding line Ea

Seam allowance 1/2in.



Napoleon Jacket
Front body Side
two sheets

Bonding line Aa

Stitching after sewing together



Stitching after sewing together



Seam allowance 1/2in.

Stitching after sewing together

Bonding line Ab





Bonding line BA

DRCOS
SITE [http://dr-cos.info\(en\)](http://dr-cos.info/en) [http://dr-cos.com\(jp\)](http://dr-cos.com/jp)
MAIL info@dr-cos.com
Twitter https://twitter.com/drcos_com
facebook <https://www.facebook.com/drcoscom>

Bonding line Bb

Bonding line Ba

Bonding line BB

facebook <https://www.facebook.com/drcoscom>
Twitter https://twitter.com/drcos_com
MAIL info@dr-cos.com
SITE [http://dr-cos.info\(en\)](http://dr-cos.info/en) [http://dr-cos.com\(jp\)](http://dr-cos.com/jp)

Dummy butt

SITE <http://dr-cos.info/en> <http://dr-cos.com/jp>
MAIL info@dr-cos.com
Twitter <https://twitter.com/dr-cos>
facebook <https://www.facebook.com/drcoscom>

DRCOS

Bonding line BB

Facing Line

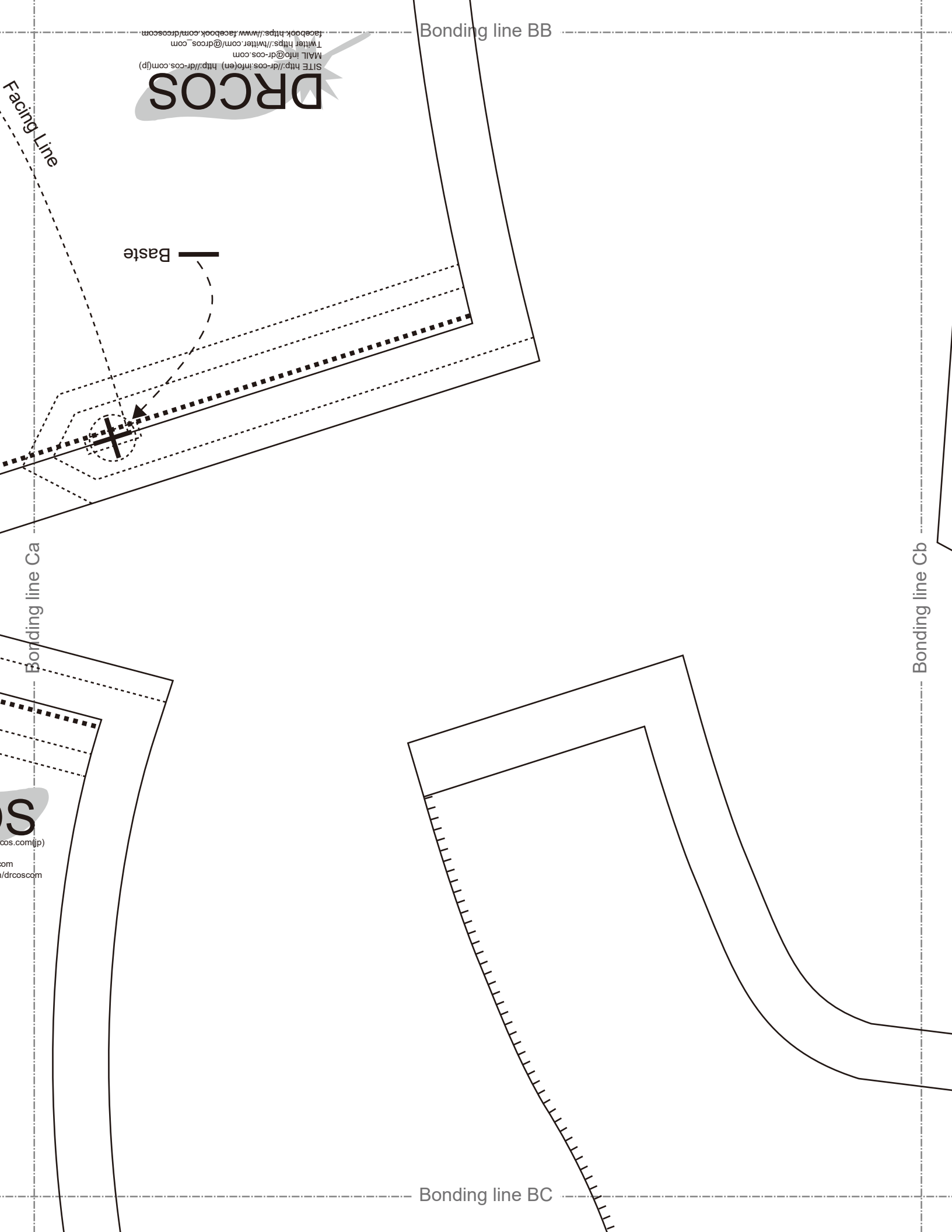
Baste

Bonding line Ca

Bonding line Cb

S
cos.com(jp)
com
/drcoscom

Bonding line BC



Bonding line BC

Bonding line Da

DRCOS

SITE [http://dr-cos.info\(en\)](http://dr-cos.info(en)) [http://dr-cos.com\(jp\)](http://dr-cos.com(jp))
MAIL info@dr-cos.com
Twitter [@drcos_com](https://twitter.com/@drcos_com)
facebook <https://www.facebook.com/drcoscom>

Serging

Bonding line Db

LADIES

LADIES' size

Napole
Front
tw
Fusibl
tw

Napoleon Jacket

Bonding line BD

Napoleon Jacket Back body Side two sheets

Bonding line Ea



Bonding line BD

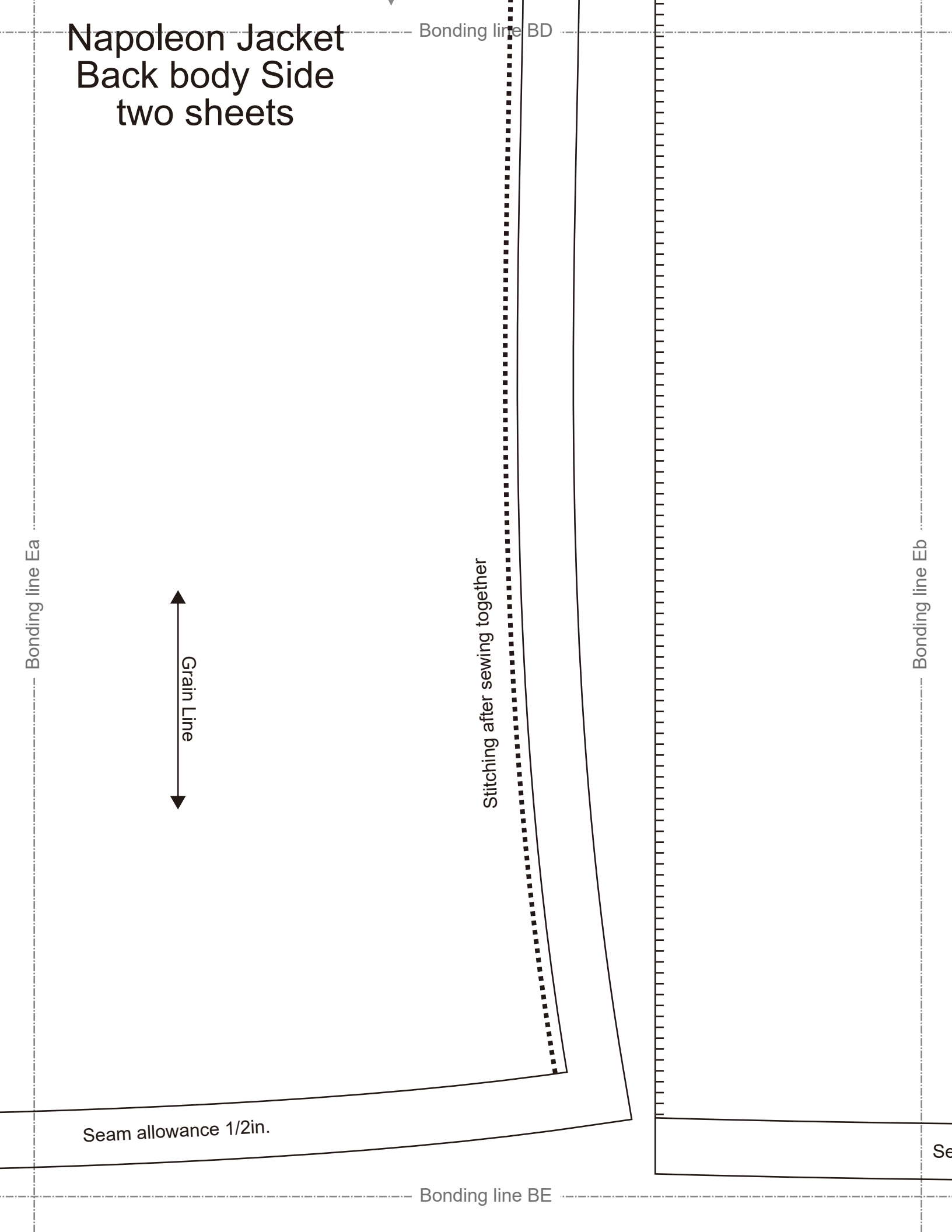
Stitching after sewing together

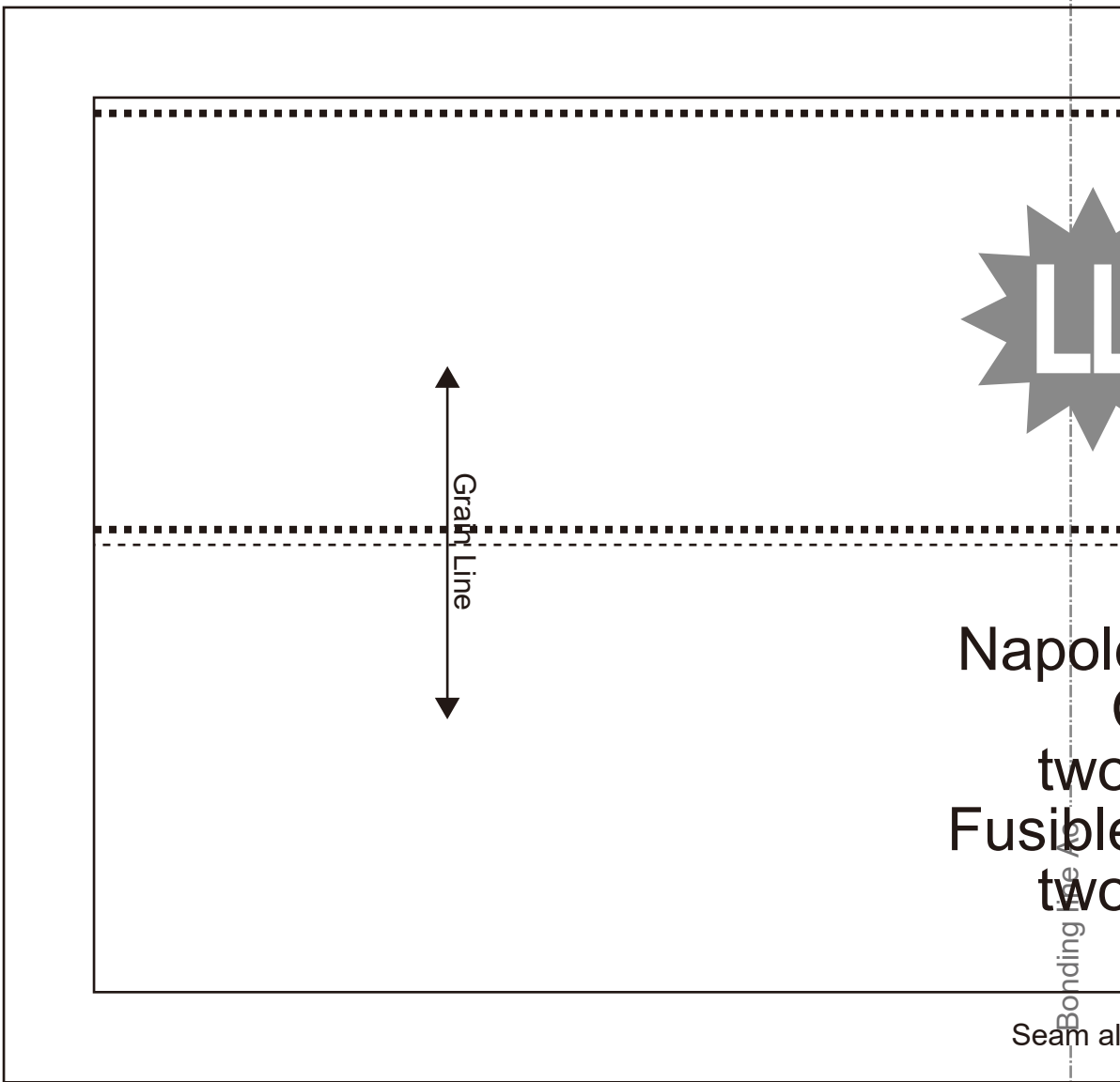
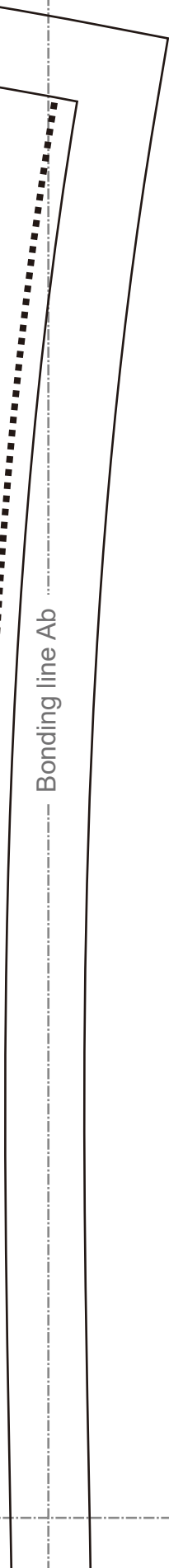
Seam allowance 1/2in.

Bonding line BE

Bonding line Eb

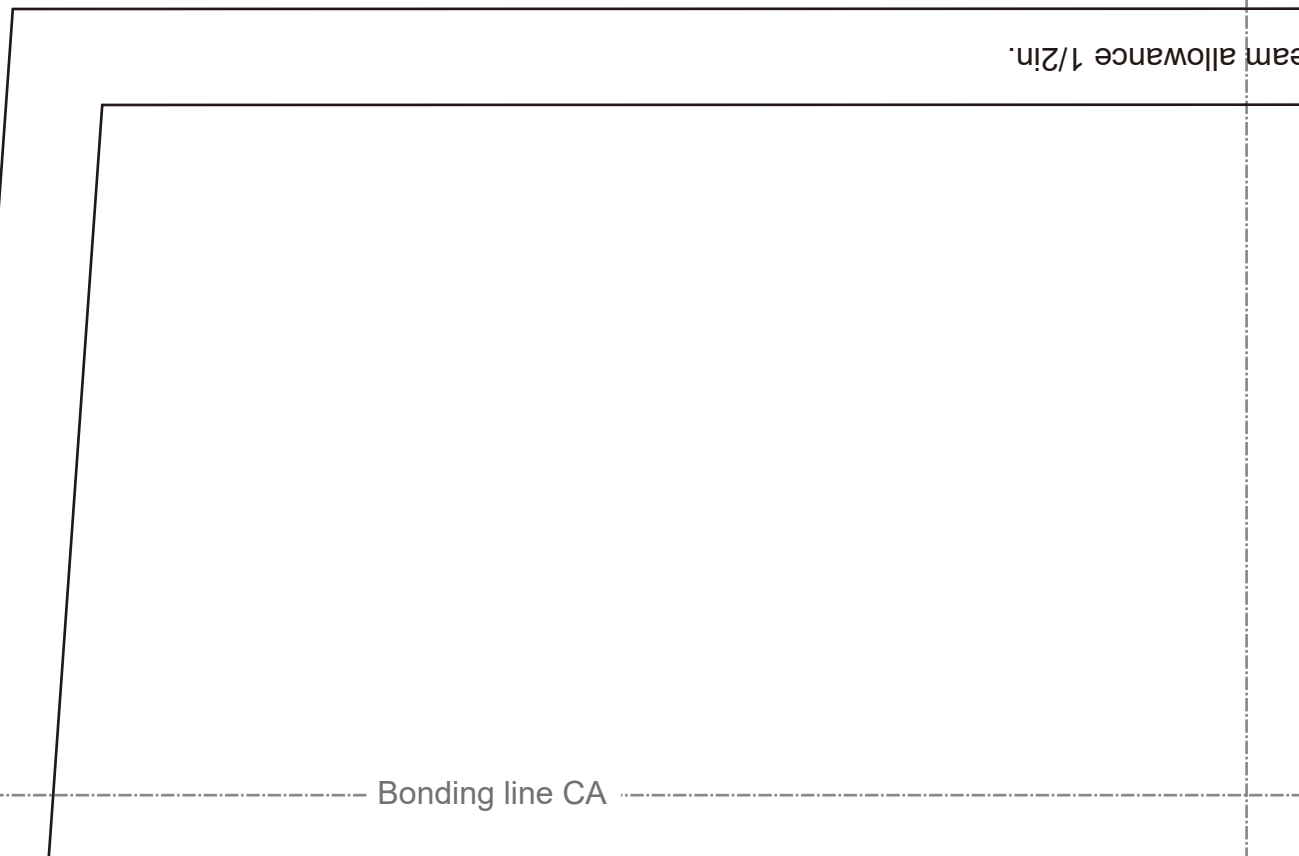
Se





two
Fusible
two

Seam allowance 1/2in.



Seam allowance 1/2in.



oleon Jacket
Sleeve
vo sheets



Bonding line CB



Bonding line Cb

Back

Bonding line Cc

www.facebook.com/drcoscom
twitter.com/drcos_com
drcos.com

cos.info(en) http://dr-cos.com(jp)

DRCOS

DRCOS

Bonding line CC

SITE [http://dr-cos.info\(en\)](http://dr-cos.info(en)) [http://dr-cos.com\(jp\)](http://dr-cos.com(jp))
MAIL info@drcos.com

DRCOS

Bonding line CC

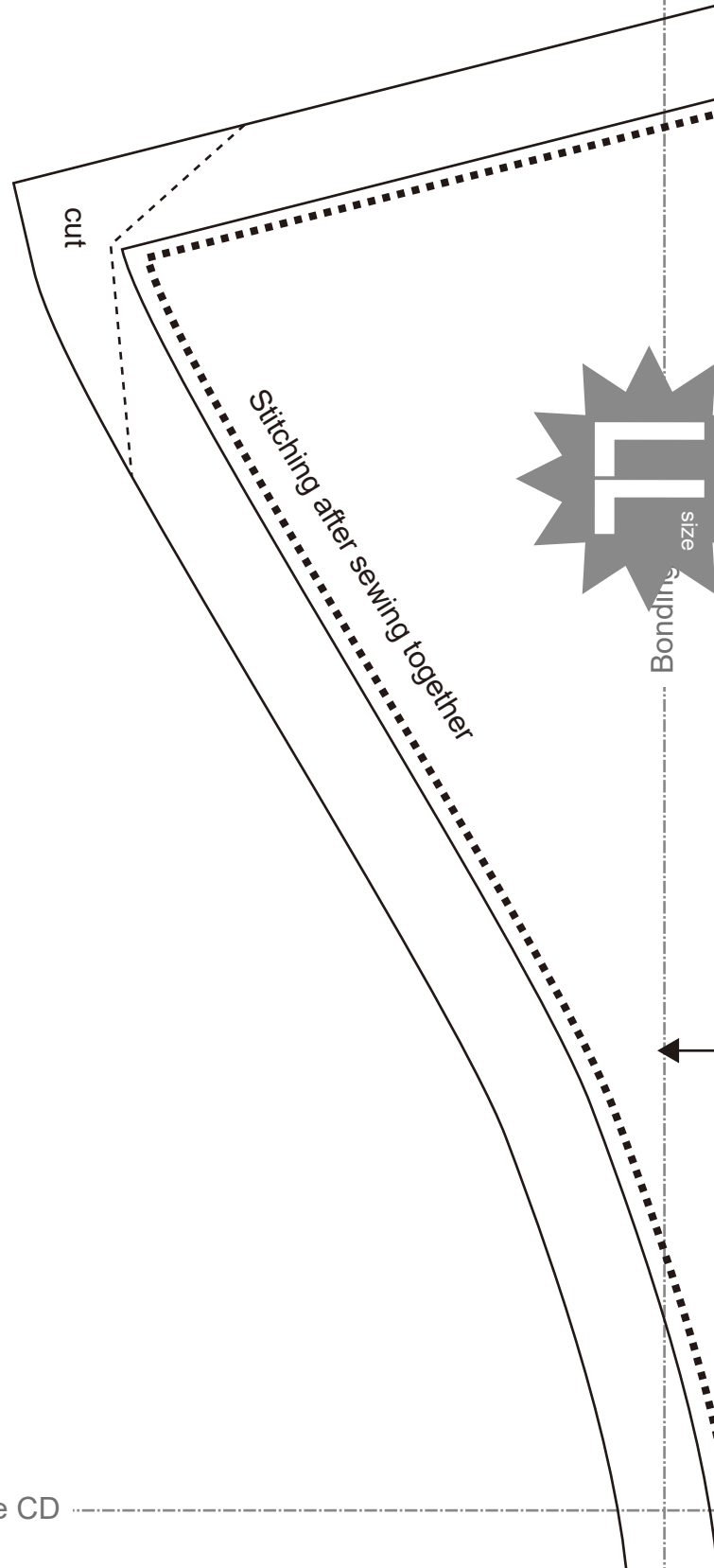
SITE [http://dr-cos.info\(en\)](http://dr-cos.info(en)) [http://dr-cos.com\(jp\)](http://dr-cos.com(jp))
MAIL info@dr-cos.com
Twitter https://twitter.com/@drcos_com
facebook <https://www.facebook.com/drcoscom>

Bonding line Db

DIES'LL size

napoleon Jacket
front body facing
two sheets
visible interlining
two sheets

Bonding line CD



Bonding line CD

Bonding line Eb



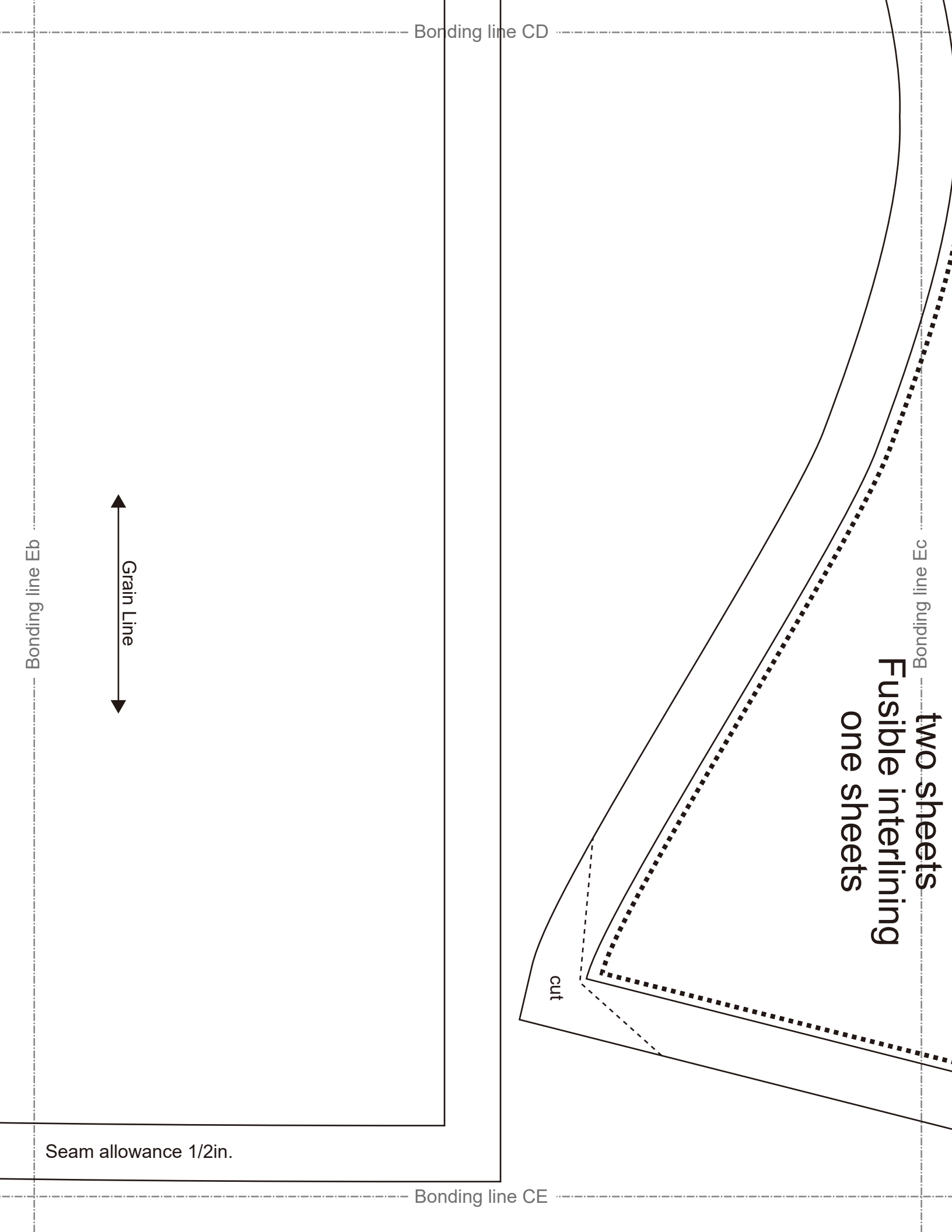
Seam allowance 1/2in.

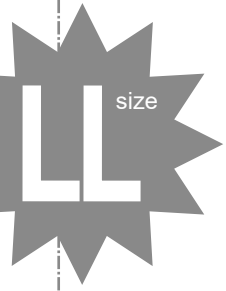
Bonding line CE

**two sheets
fusible interlining
one sheets**

Bonding line Ec

cut





napoleon Jacket
Cuffs
two sheets
sible interlining
two sheets

Seam allowance 1/2in.

Seam allo

Bonding line DA

Bonding line Ad

Napoleo
Sle
two s

Grain Line

Bonding line Bc

Bonding line DA

Bonding line DB

Bonding line Bd

LADIE

Bonding line DB

Bonding line Cc

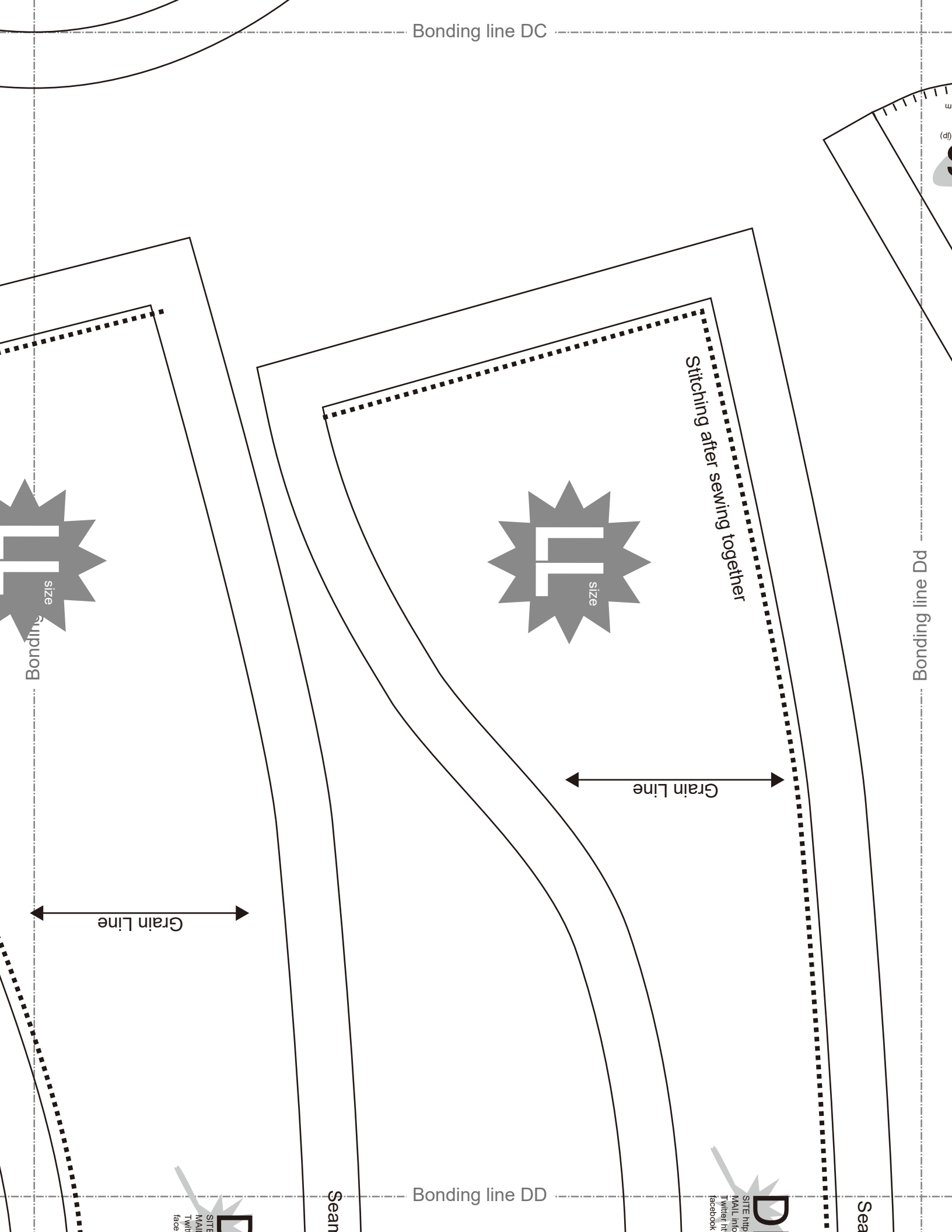
Bonding line Cd

front

DRCC
SITE <http://dr-cos.info/en> <http://dr-cos.info>
MAIL info@dr-cos.com
Twitter <https://twitter.com/drcc>
facebook <https://www.facebook.com/drcc>

Bonding line DC

Bonding line DC



Bonding line DC

size

Grain Line



size

Grain Line

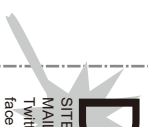
Stitching after sewing together

Bonding line Dd

Seam

Bonding line DD

Seam



Bonding line Ed

Seam allowance 1/2in.

DRCOS

SITE <http://dr-cos.info/en> | <http://dr-cos.com/jp>
MAIL info@dr-cos.com
Twitter: [@drcos_com](https://twitter.com/@drcos_com)
facebook: <https://www.facebook.com/drcoscom>

Bonding line DD

Seam allowance 1/2in.

Napoleon Jacket
collar stand
two sheets
Fusible interlining
one sheets

Bonding line DE

DRCOS

SITE <http://dr-cos.info/en> | <http://dr-cos.com/jp>
MAIL info@dr-cos.com
Twitter: [@drcos_com](https://twitter.com/@drcos_com)
facebook: <https://www.facebook.com/drcoscom>

Bonding line Ec

Napoleon Jacket
Collar

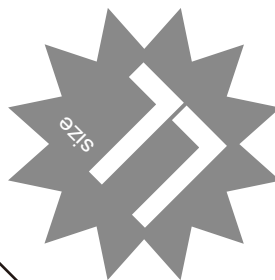
two sheets

Fusible interlining

DRCOS
 SITE <http://drcos.info/en> <http://drcos.com/jp>
 MAIL info@drcos.com
 Twitter <https://twitter.com/drcos>
 Facebook <https://www.facebook.com/drcos.com>

Napoleon Jacket
 Back body facing
 one sheets
 Fusible Interlining
 one sheets

Seam allowance 1/2in.



Grain Line

Serging

Napoleon Jacket
 shoulder strap
 four sheets

