

Baste

Facing Line



Button position

Dummy buttons and buttonholes on the right side

Bonding line Aa

DRCOS

SITE [http://dr-cos.info\(en\)](http://dr-cos.info(en)) [http://dr-cos.com\(jp\)](http://dr-cos.com(jp))
MAIL info@dr-cos.com
Twitter [@drcos_com](https://twitter.com/@drcos_com)
facebook <https://www.facebook.com/drcoscom>



DRCOS

SITE [http://dr-cos.info\(en\)](http://dr-cos.info(en)) [http://dr-cos.com\(jp\)](http://dr-cos.com(jp))
MAIL info@dr-cos.com
Twitter [@drcos_com](https://twitter.com/@drcos_com)
facebook <https://www.facebook.com/drcoscom>

Bonding line AA



Bonding line AA



Children's

Napoleon Jacket
Front body Side
two sheets

Stitching after sewing together



Stitching after sewing together

Seam allowance 1/2in.

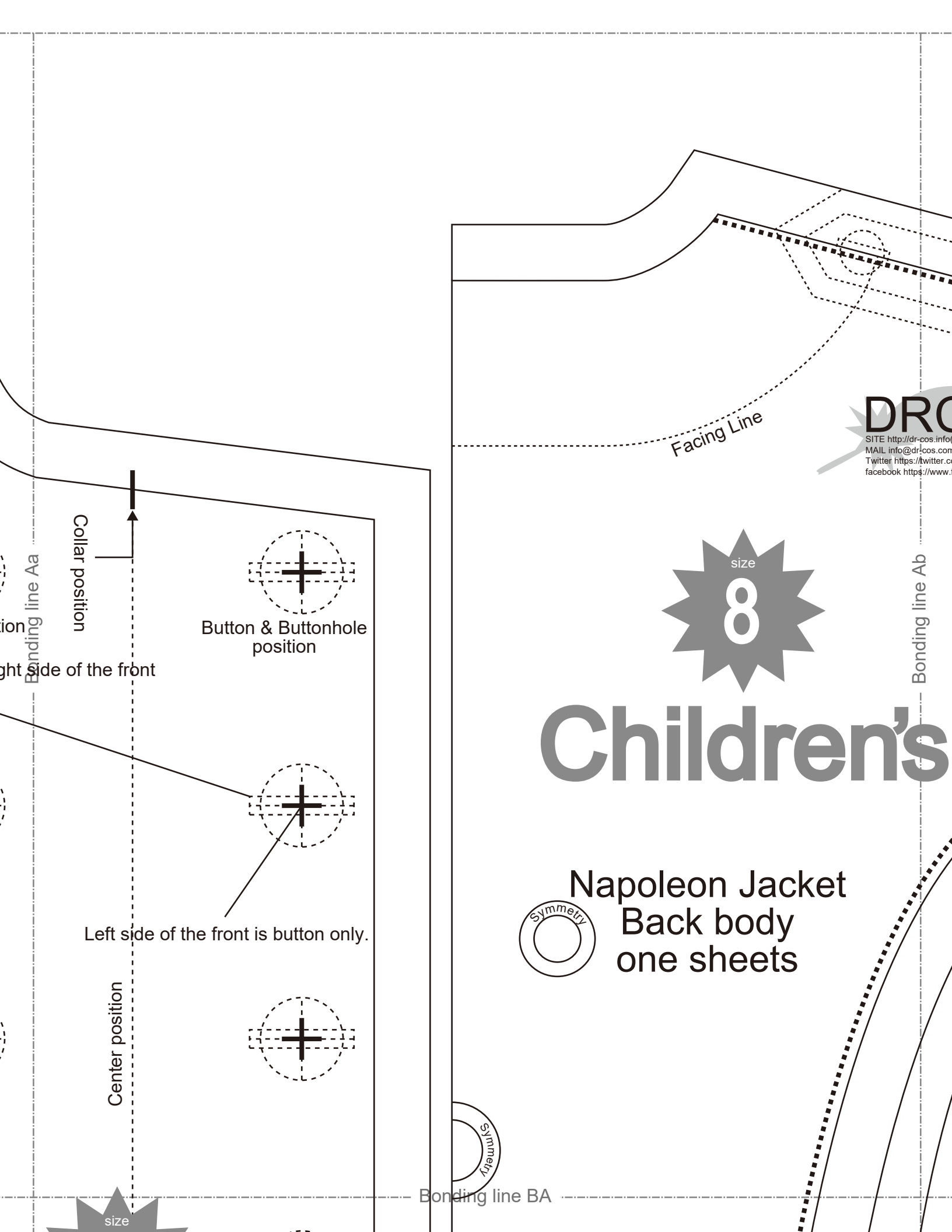
Bonding line AB



Napoleon Jacket
Front body Side
two sheets

Bonding line Ba

Seam allowance



DRC

SITE <http://dr-cos.info/>
MAIL info@dr-cos.com
Twitter <https://twitter.com/dr-cos>
facebook <https://www.facebook.com/dr-cos>

Facing Line

size

8

Bonding line Ab

Bonding line Aa

Collar position

Button & Buttonhole position

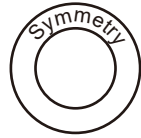
Right side of the front

Left side of the front is button only.

Center position

Children's

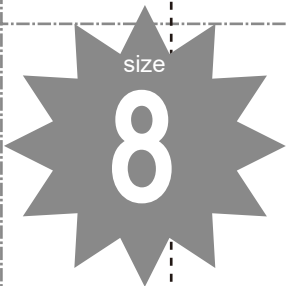
Napoleon Jacket Back body one sheets



Bonding line BA

size

Bonding line BA



Children's



Napoleon Jacket Front body two sheets



Bonding line Ba



Seam allowance 1/2in.



Seam allowance 1/2in.

Stitching after sewing together

Bonding line Bb

Stitching after sewing together

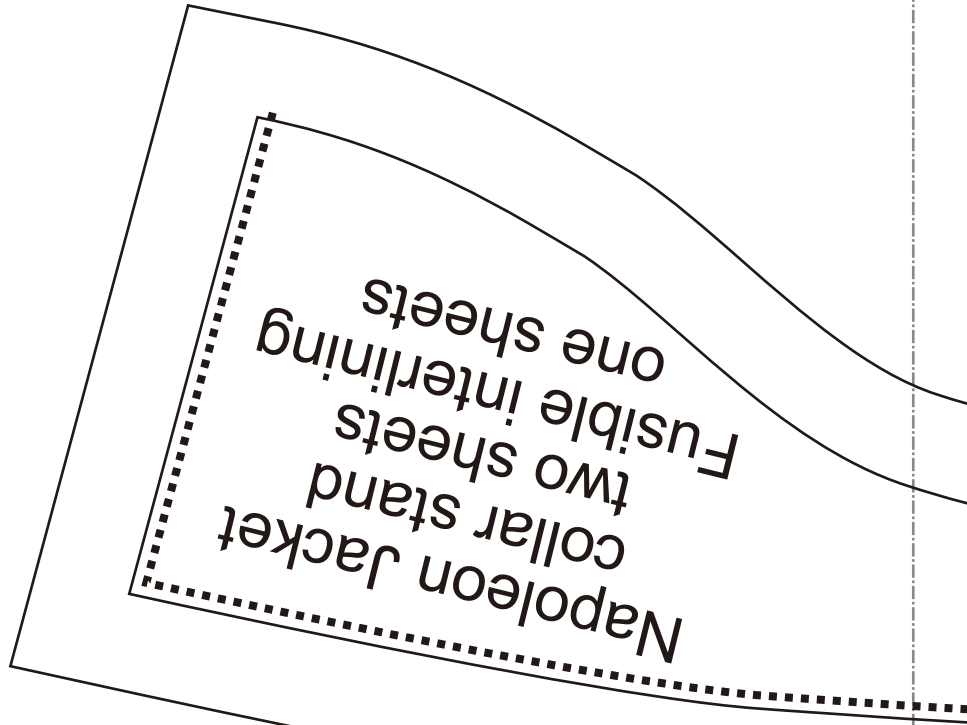
Bonding line BB

DRCOS

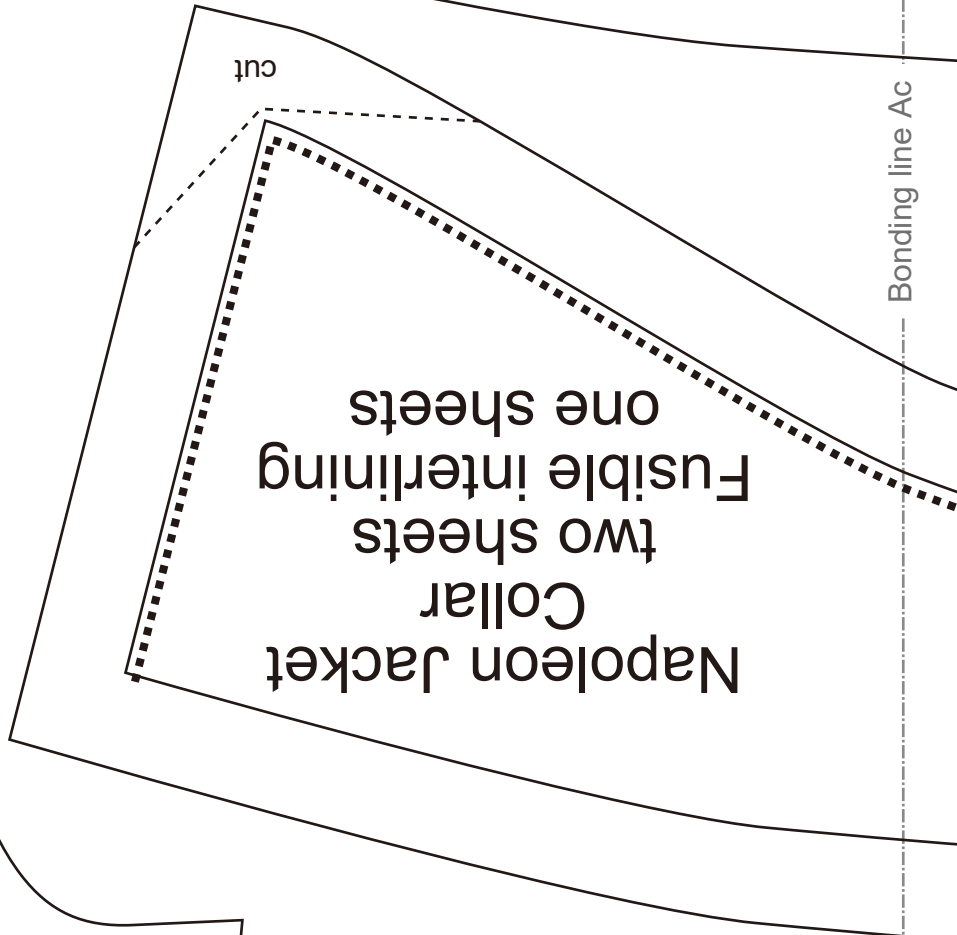
http://dr-cos.info(en) http://dr-cos.com(jp)
info@dr-cos.com
r https://twitter.com/drcos_com
ook https://www.facebook.com/drcoscom

Bonding line Ab

's



Bonding line Ac



DRCOS

SITE [http://dr-cos.info\(en\)](http://dr-cos.info(en)) [http://dr-cos.com\(jp\)](http://dr-cos.com(jp))
MAIL info@dr-cos.com
Twitter https://twitter.com/drcos_com
facebook <https://www.facebook.com/drcoscom>

Bonding line CA

Bonding line CA



Children's

Napoleon Jacket
Back body Side
two sheets

Bonding line Bb

Stitching after sewing together



Stitching after sewing together

Seam allowance 1/2in.

Seam allowance 1/2in.

Bonding line Bc

Bonding line CB

Bonding line Ac

Seam allowance 1/2in.

DRCOS
 SITE [http://dr-cos.info\(en\)](http://dr-cos.info(en)) [http://dr-cos.com\(fp\)](http://dr-cos.com(fp))
 MAIL info@dr-cos.com
 Twitter <https://twitter.com/dr-cos>
 Facebook <https://www.facebook.com/drcoscom>

DRCOS
 SITE [http://dr-cos.info\(en\)](http://dr-cos.info(en)) [http://dr-cos.com\(fp\)](http://dr-cos.com(fp))
 MAIL info@dr-cos.com
 Twitter <https://twitter.com/dr-cos>
 Facebook <https://www.facebook.com/drcoscom>

Grain Line



Stitching after sewing together

Bonding line Ad cut

Bonding line DA

Grain Line

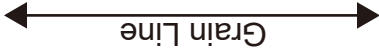


Stitching after sewing together

Bonding line DA

Children's size 8

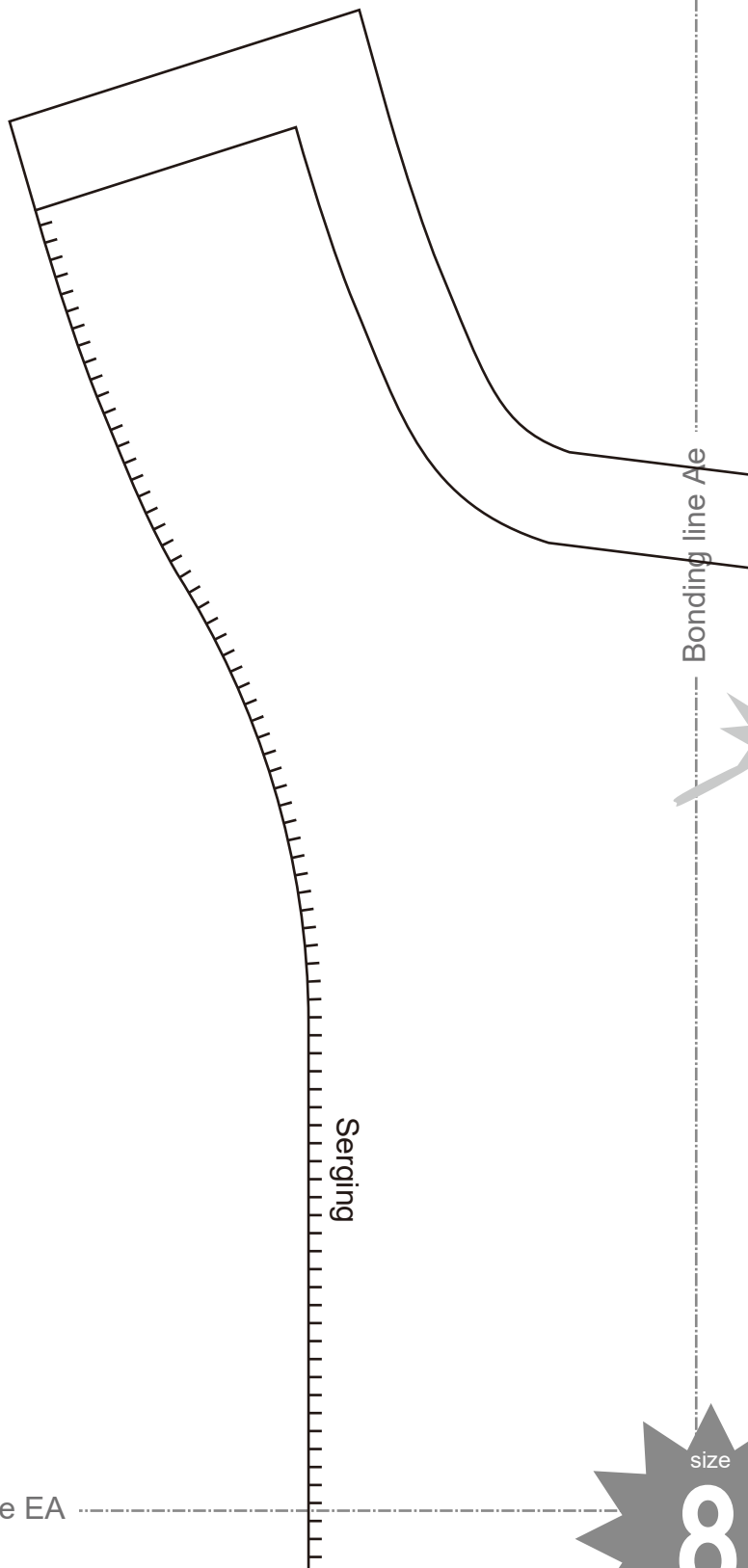
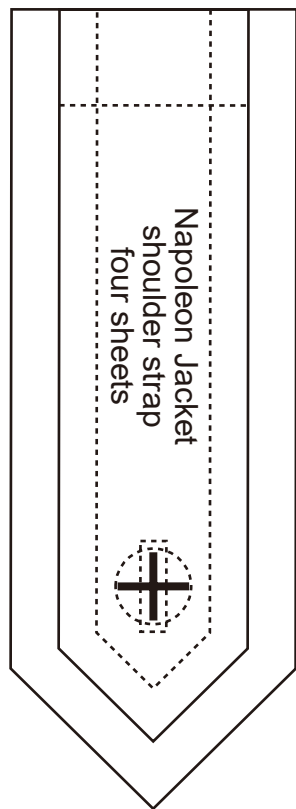
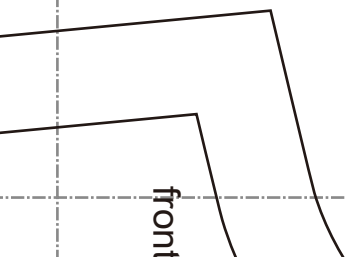
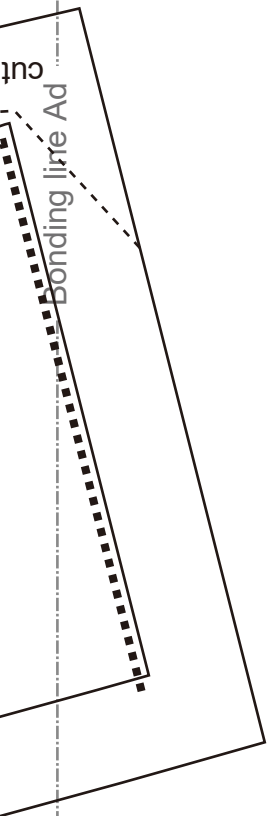
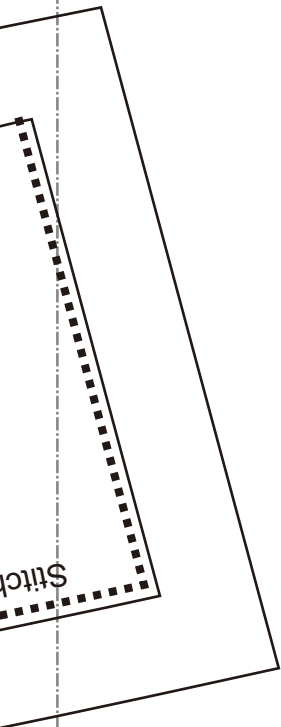
Napoleon Jacket
Sleeve
two sheets



Bonding line Bc

Bonding line Bd

Bonding line DB



Bonding line EA



Child

Napoleon
Front body
two sh
Fusible in
two sh

Bonding line Be



Seam allow

Bonding line EA

front

DRCOS
SITE: <http://dr-cos.info/en> | <http://dr-cos.com/tp>
MAIL: info@dr-cos.com
Twitter: <https://twitter.com/dr-cos.com>
facebook: <https://www.facebook.com/drcos.com>

Bonding line Bd

Back

Bonding line EB

Bonding line Ae

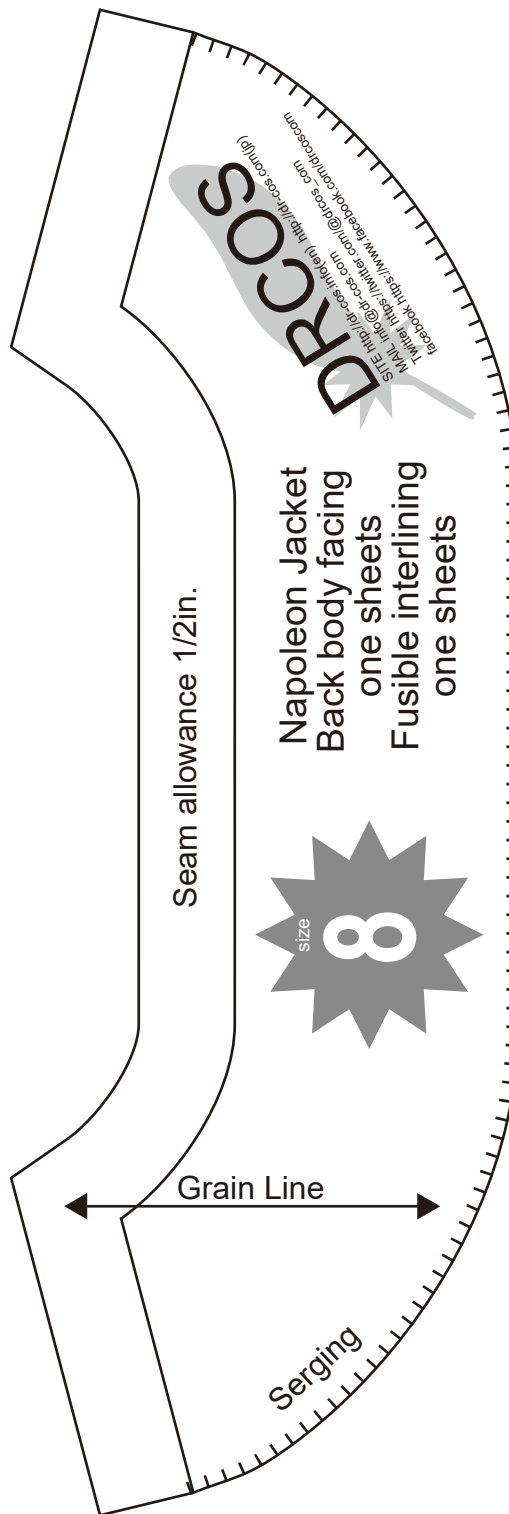
DRCOS

SITE <http://dr-cos.info/en> <http://dr-cos.com/jp>
MAIL info@dr-cos.com
Twitter https://twitter.com/@drcos_com
facebook <https://www.facebook.com/drcoscom>

size

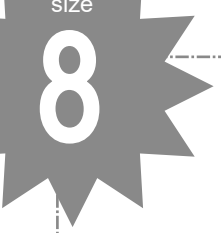
8

Bonding line FA



Napoleon Jacket
Back body facing
one sheets
Fusible interlining
one sheets

Bonding line Af



Children's

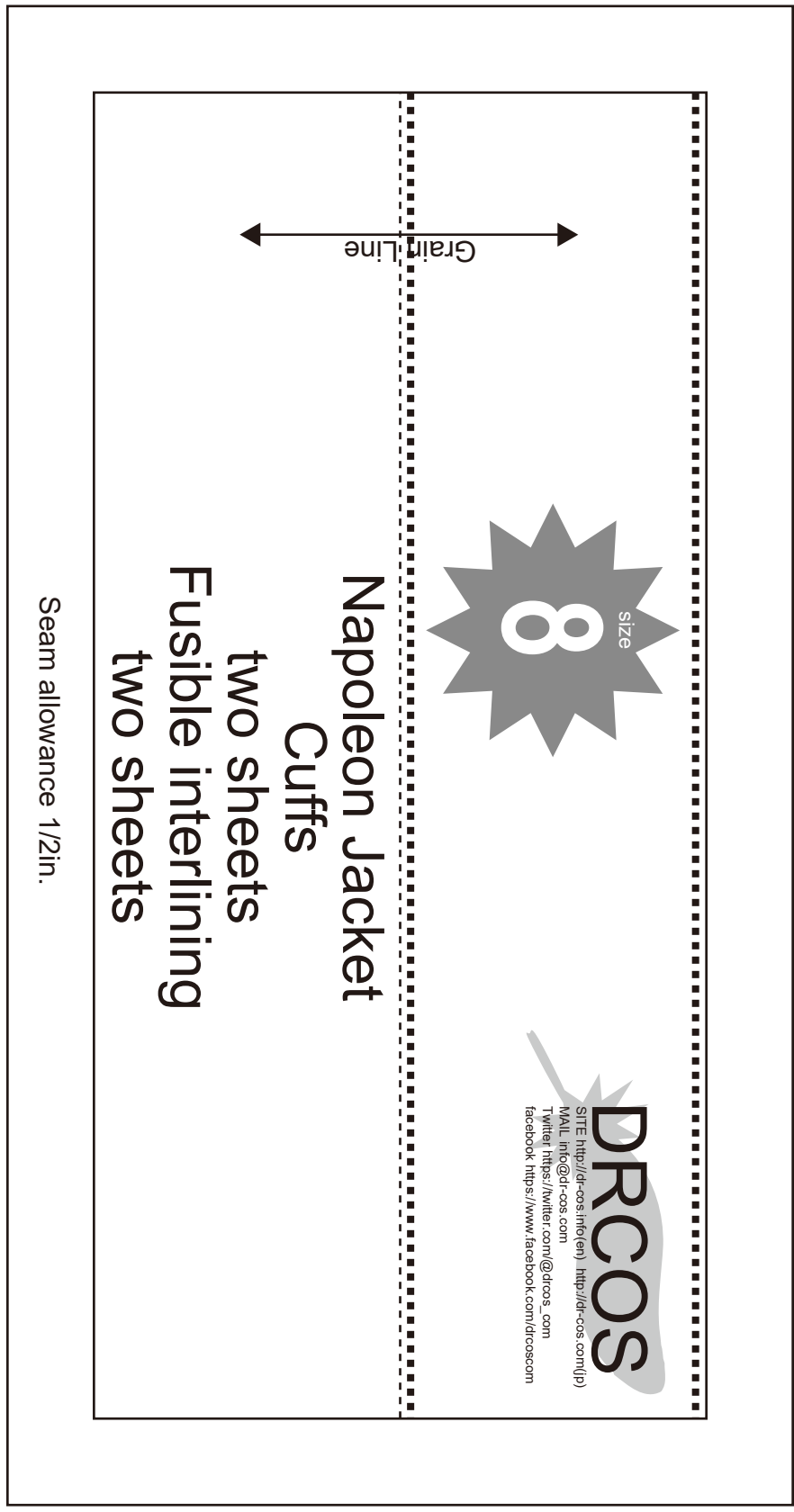
leon Jacket
body facing
o sheets
le interlining
o sheets

Bonding line Be



Seam allowance 1/2in.

Bonding line FA



Bonding line Bf

Bonding line FB