

Seam allowance 1/2in.



Bonding line AA

Bonding line Aa

Bonding line AA

Bonding line Ba

Seam allowance 1/2in.

Bonding line AB

Grain Line



Bonding line AB

Bonding line Ca

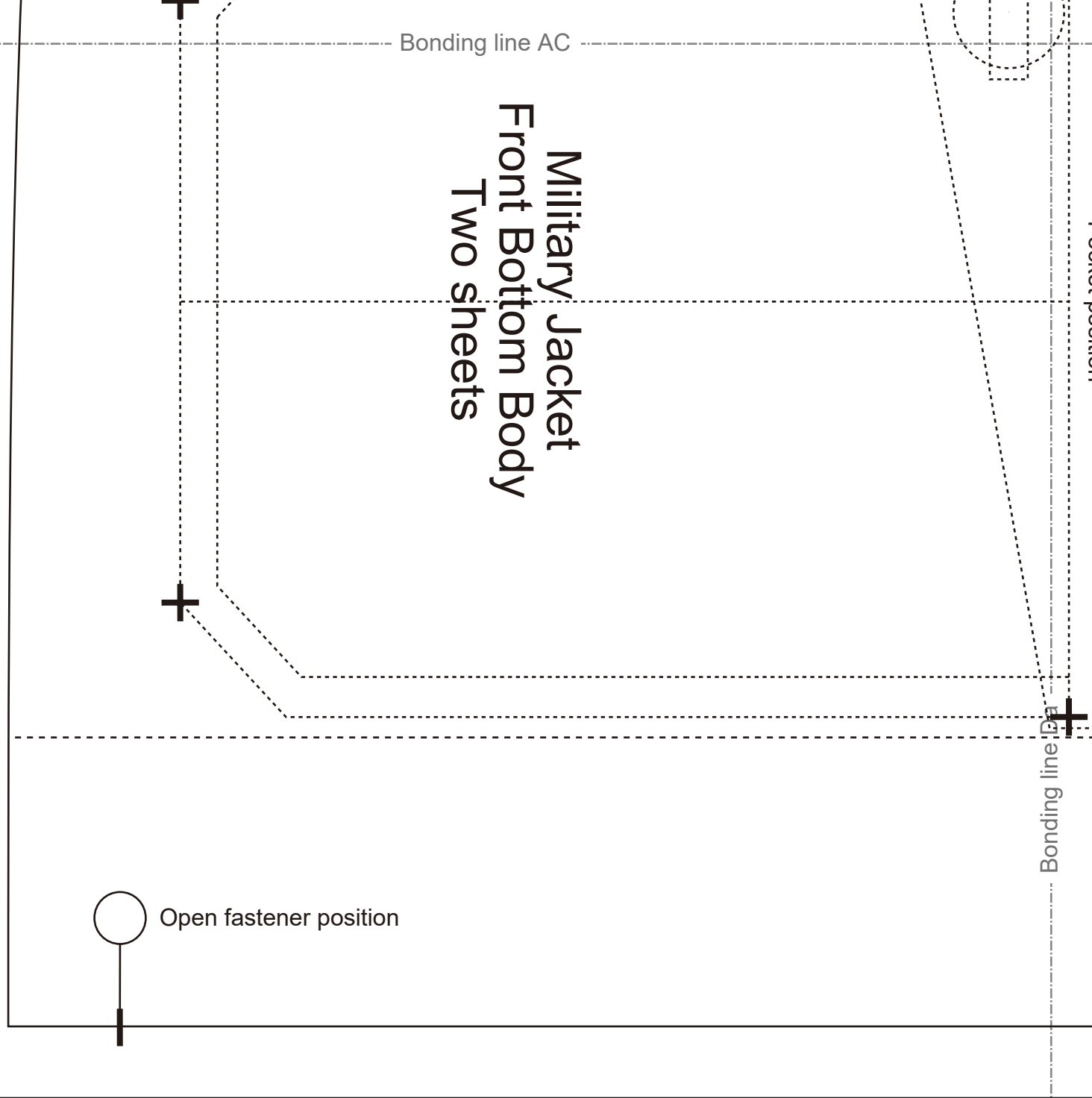
Seam allowance 1/2in.

Bonding line AC



Bonding line AC

# Military Jacket Front Bottom Body Two sheets



Open fastener position

## DRCOS

SITE [http://dr-cos.info\(en\)](http://dr-cos.info(en)) [http://dr-cos.com\(jp\)](http://dr-cos.com(jp))  
MAIL [info@dr-cos.com](mailto:info@dr-cos.com)  
Twitter [https://twitter.com/drcos\\_com](https://twitter.com/drcos_com)  
facebook <https://www.facebook.com/drcoscom>

# LADIE

Bonding line AD

# LADIES'

Military Jacket  
Back Bottom Body  
Two sheets

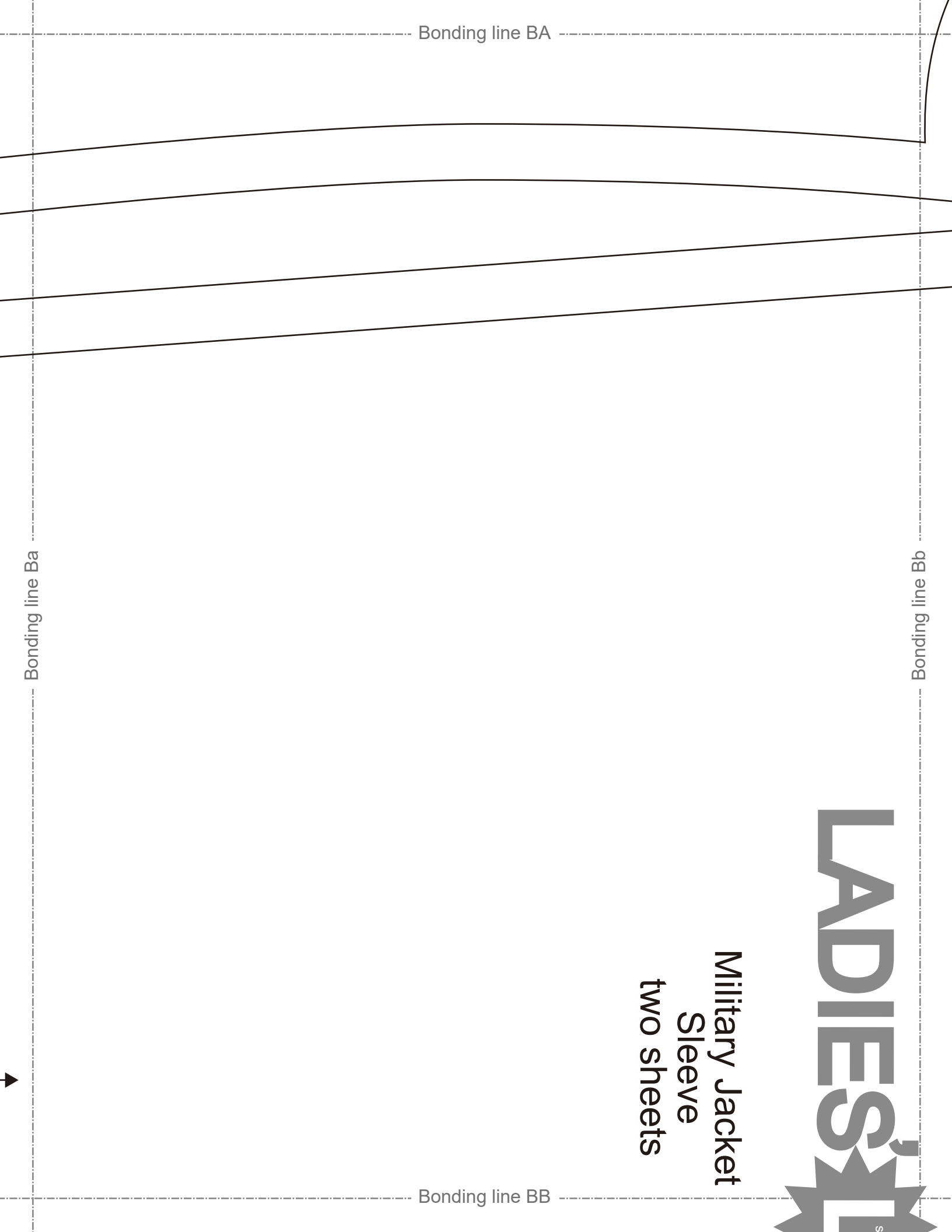
Bonding line Aa

Bonding line Ab

Bonding line BA



**Military Jacket  
Sleeve  
two sheets**

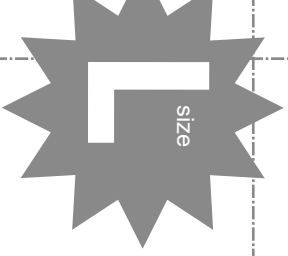


Bonding line BA

Bonding line Ba

Bonding line Bb

Bonding line BB



at

Bonding line BB

Bonding line Ca

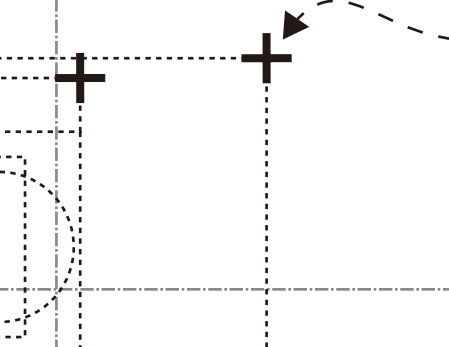
Bonding line Cb

**DRCOS**  
 SITE <http://dr-cos.info/en> <http://dr-cos.com/tp>  
 MAIL [info@dr-cos.com](mailto:info@dr-cos.com)  
 Twitter <https://twitter.com/dr-cos.com>  
 facebook <https://www.facebook.com/drcoscom>

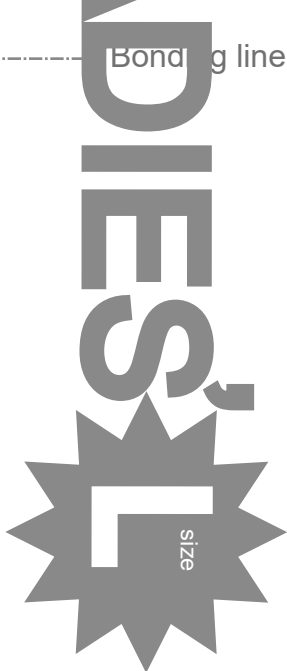
LAD

Bonding line BC

Baste



Bonding line BC

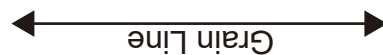
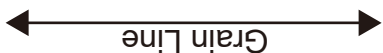


Pocket position

Bonding line Ba

Facing Line

Bonding line Db



Seam allowance 1/2in.

Bonding line BD





a line Ac



# Military Jacket Back Top Body one sheets

Grain Line

Seam allowance 1/2in.



**DRCOS**  
 SITE <http://dr-cos.info/en> <http://dr-cos.com/jp>  
 MAIL [info@dr-cos.com](mailto:info@dr-cos.com)  
 T writer <https://twitter.com/@drcos.com>  
 facebook <https://www.facebook.com/drcoscom>

Bonding line Ab

Bonding line CA



# LADIES'S

Military Jacket  
flap  
two sheets

Seam allowance 1/2in.

Front

Bonding line CA

Bonding line Bb

Bonding line Bc

Bonding line CB

Bonding line CB

Bonding line Cb

Back

Bonding line Cc

Epaulette four sheets



Seam allowance 1/4in.

Bonding line CC



# Military Jacket Front Top Body Two sheets

Flap position

Facing Line

Grain Line

Seam allowance 1/2in.

Bonding line CC

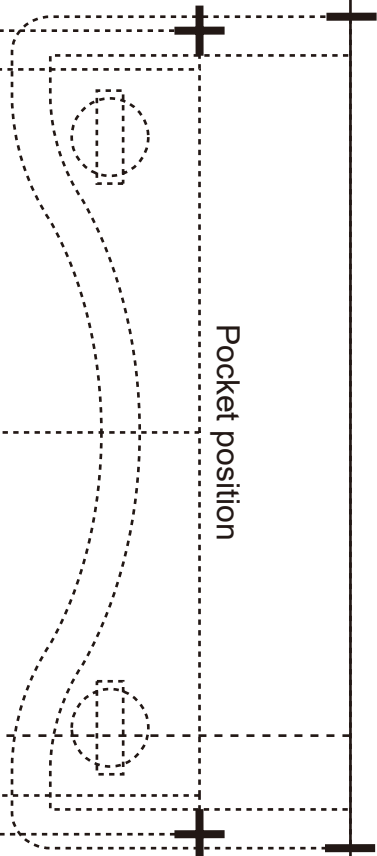
Bonding line:Dc

# Military Jacket Facing two sheets Fusible interlining two sheets

Bonding line CD

Bonding line:Db

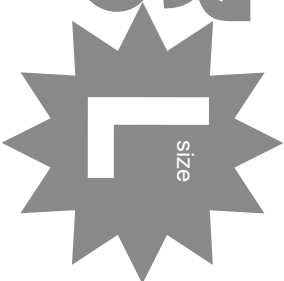
Pocket position



1/2in.

**DRCOS**

SITE <http://dr-cos.info/en/> <http://dr-cos.com/jp/>  
MAIL [info@dr-cos.com](mailto:info@dr-cos.com)  
Twitter <https://twitter.com/drcos.com>  
facebook <https://www.facebook.com/drcoscom>

**LADIES'S**  size

Bonding line Ad

Bonding line DA

**DRCOS**

SITE <http://dr-cos.info/en/> <http://dr-cos.com/jp/>  
MAIL [info@dr-cos.com](mailto:info@dr-cos.com)  
Twitter <https://twitter.com/drcos.com>  
facebook <https://www.facebook.com/drcoscom>

*Epaulette position*

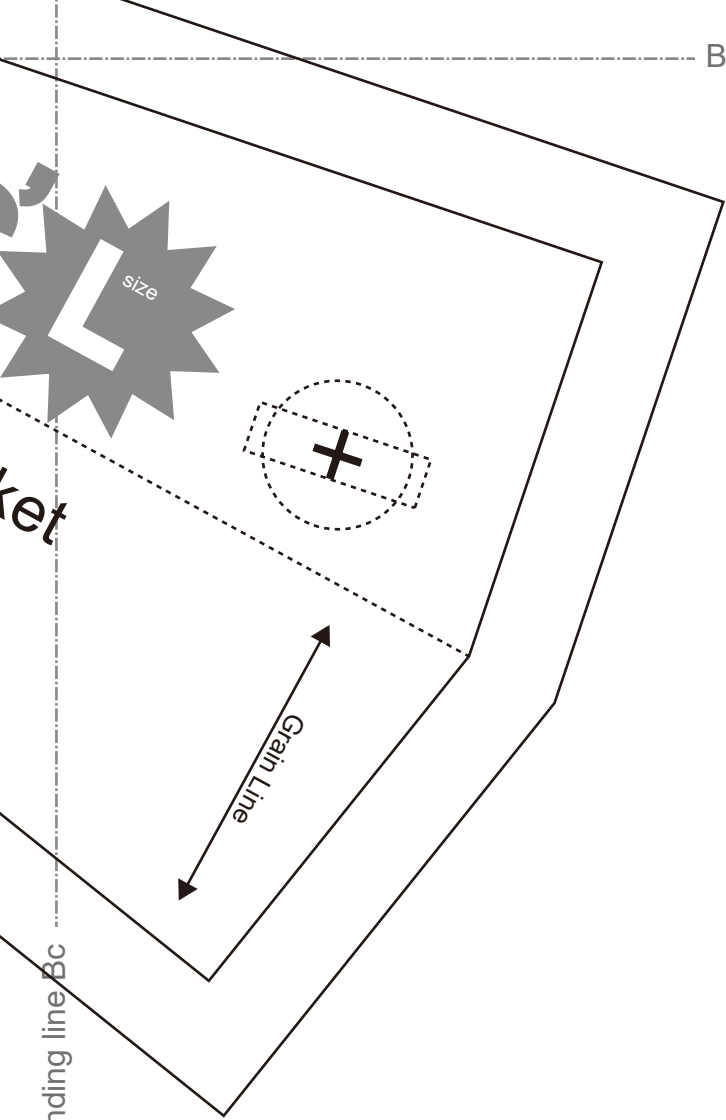


**LADIES'S**  size

align Ac

Grat

Symmetry



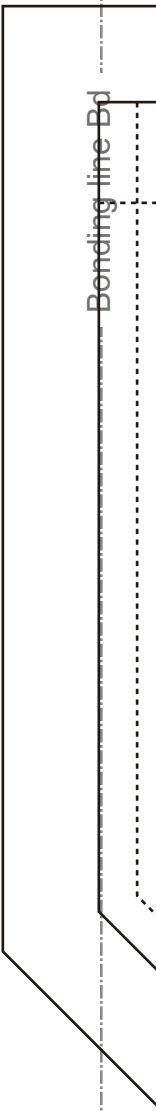
Bonding line DA

Bonding line Bc

Seam allowance 1/2in.



**Military Jacket**  
 Front piece one sheets  
 Fusible interlining one she



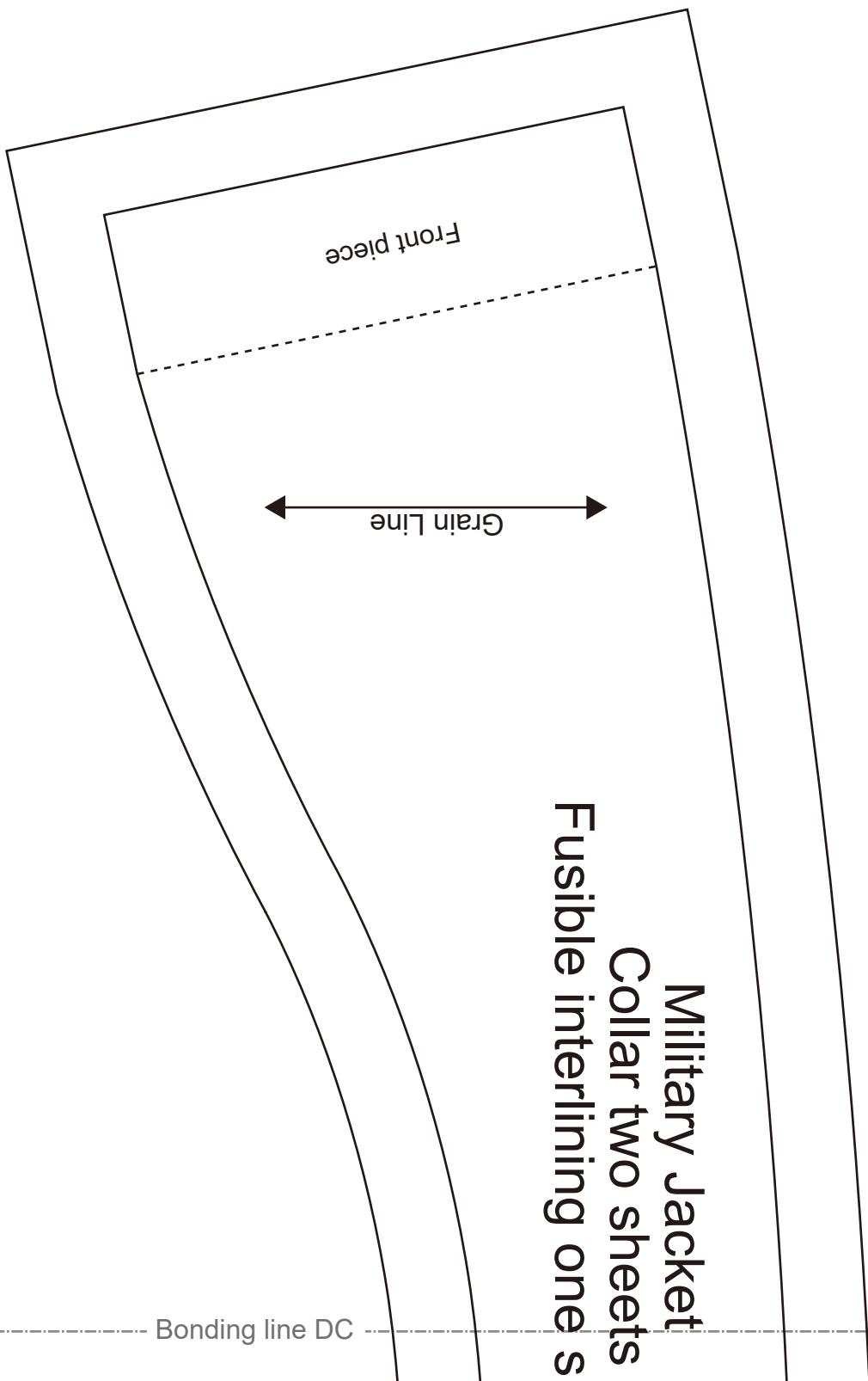
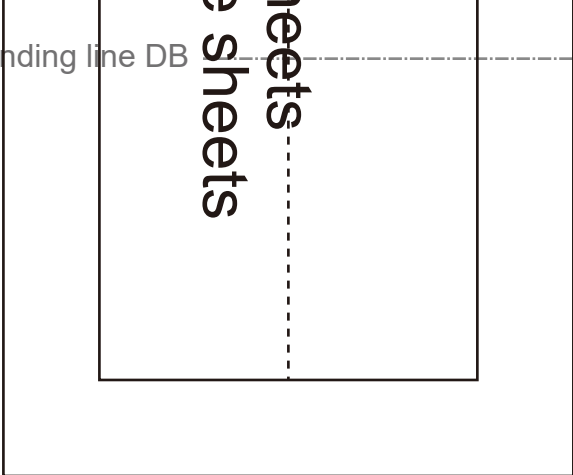
Bonding line Bd

Bonding line DB

**DRCOS**  
 SITE <http://dr-cos.info/en> <http://dr-cos.com/p>  
 MAIL [info@dr-cos.com](mailto:info@dr-cos.com)  
 Twitter <https://twitter.com/dr-cos>  
 facebook <https://www.facebook.com/drcos.com>

Bonding line DB

heets  
e sheets



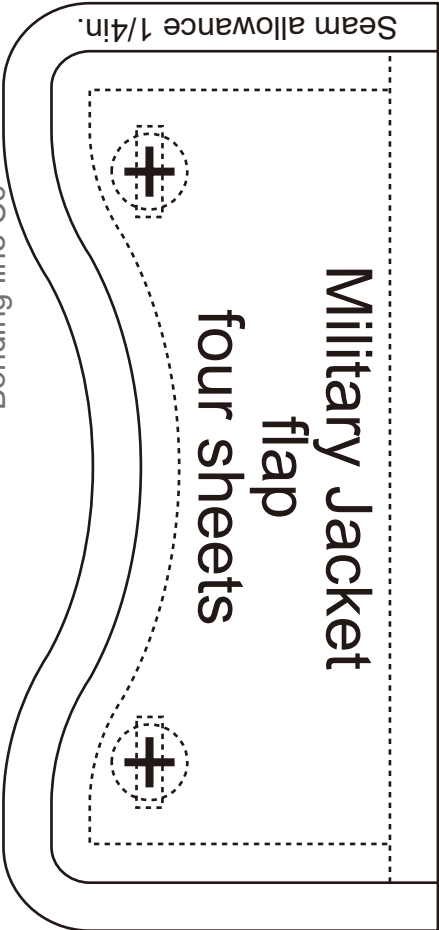
Bonding line Cd

**Military Jacket**  
Collar two sheets  
Fusible interlining one s

Bonding line DC

Bonding line Cc

Seam allowance 1/4in.



**Military Jacket**  
flap  
four sheets

Bonding line Dd

et  
ets  
ne sheets

# LADIES'S

size

Seam allowance 1/2in.

Bonding line DC

**DRCOS**  
SITE <http://dr-cos.info/en> <http://dr-cos.com/jp>  
MAIL [info@dr-cos.com](mailto:info@dr-cos.com)  
Twitter [https://twitter.com/drcos\\_com](https://twitter.com/drcos_com)  
facebook <https://www.facebook.com/drcoscom>

Bonding line DD

Epaulette position



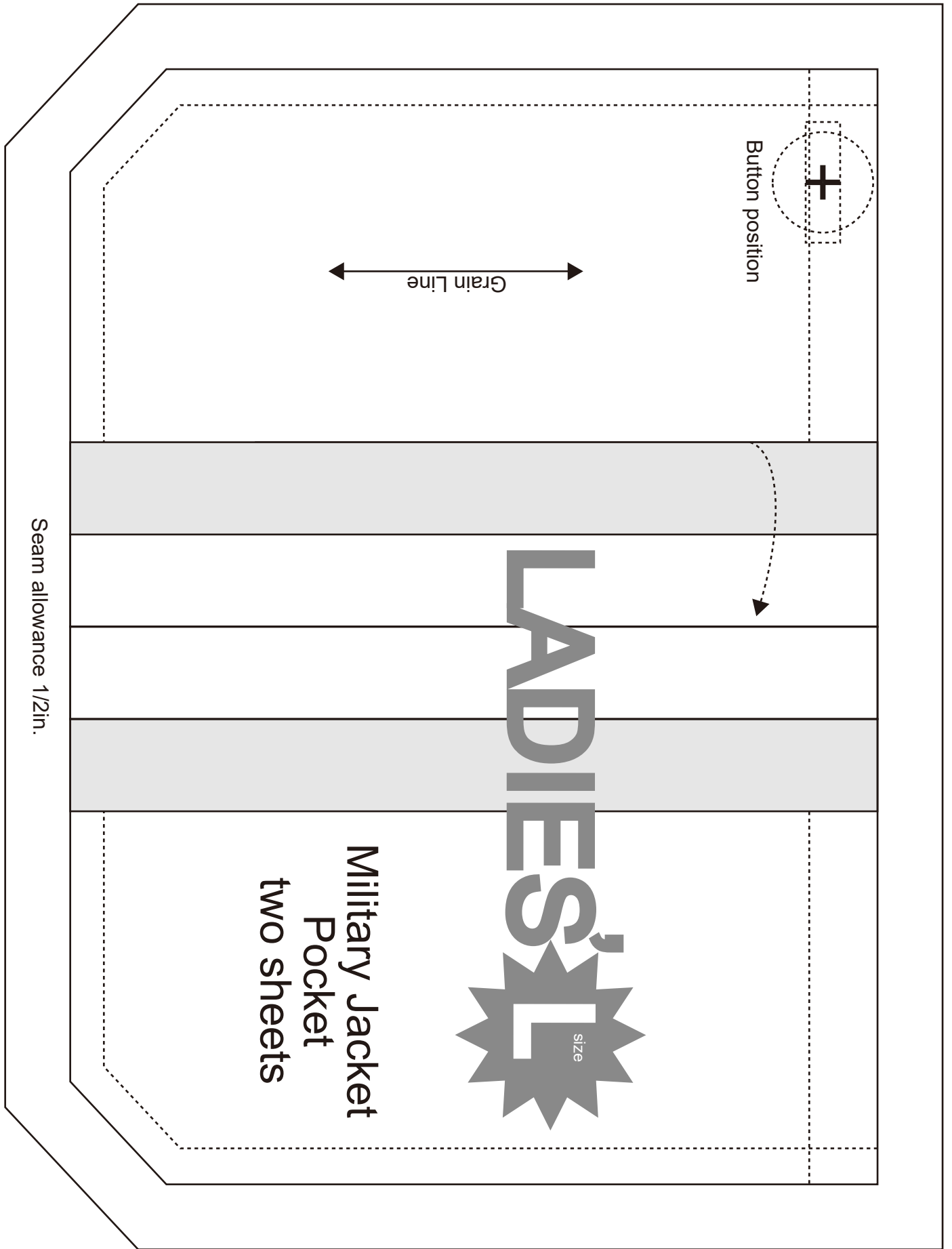
**DRCOS**

SITE <http://dr-cos.info/en> <http://dr-cos.com/jp>  
MAIL [info@dr-cos.com](mailto:info@dr-cos.com)  
Twitter [https://twitter.com/drcos\\_com](https://twitter.com/drcos_com)  
facebook <https://www.facebook.com/drcoscom>

Bonding line;Dc



Bonding line DD



Button position

Grain Line

Seam allowance 1/2in.

Military Jacket  
Pocket  
two sheets

LADIES'S  
size

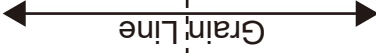
Bonding line Ec

Bonding line Ed

Bonding line DE

Bonding line Ad

Bonding line Ae



**Military Jacket**  
**Cuffs two sheets**  
**Fusible interlining two sheets**

Seam allowance 1/2in.

Bonding line EA



Bonding line EA

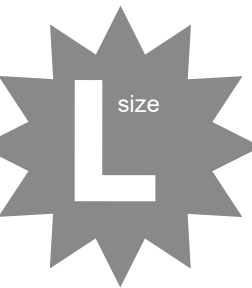
SITE <http://dr-cos.info/en/> <http://dr-cos.com/lp>  
MAIL [info@dr-cos.com](mailto:info@dr-cos.com)  
Twitter [https://twitter.com/dr-cos\\_com](https://twitter.com/dr-cos_com)  
facebook <https://www.facebook.com/dr-cos.com/>

**DRCOS**

Bonding line Bd



**LADIES'**



size

**Military Jacket  
Pocket  
two sheets**



Bonding line Be

Seam allowance 1/2in.

Bonding line EB