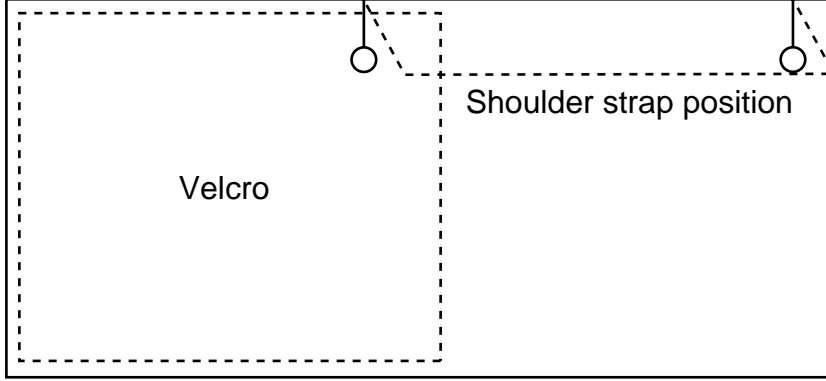


[Home](#)  
[Back to Meid2 page](#)



Bonding line Aa

Bonding line AA

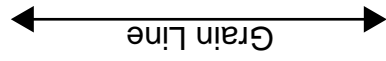
Bonding line AA



Bonding line Ba

Bonding line AB

Bonding line AB



Bonding line Ca

Bonding line AC

Bonding line AC

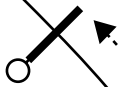
Seam allowance 1/2in.

Seam allowance 1/2in.

Back

Bonding line Da

Grain Line



Bonding line AD

# Child

# Children's <sup>size</sup> 10

Meid2  
Sleeve  
two sheets

Bonding line AD

gather

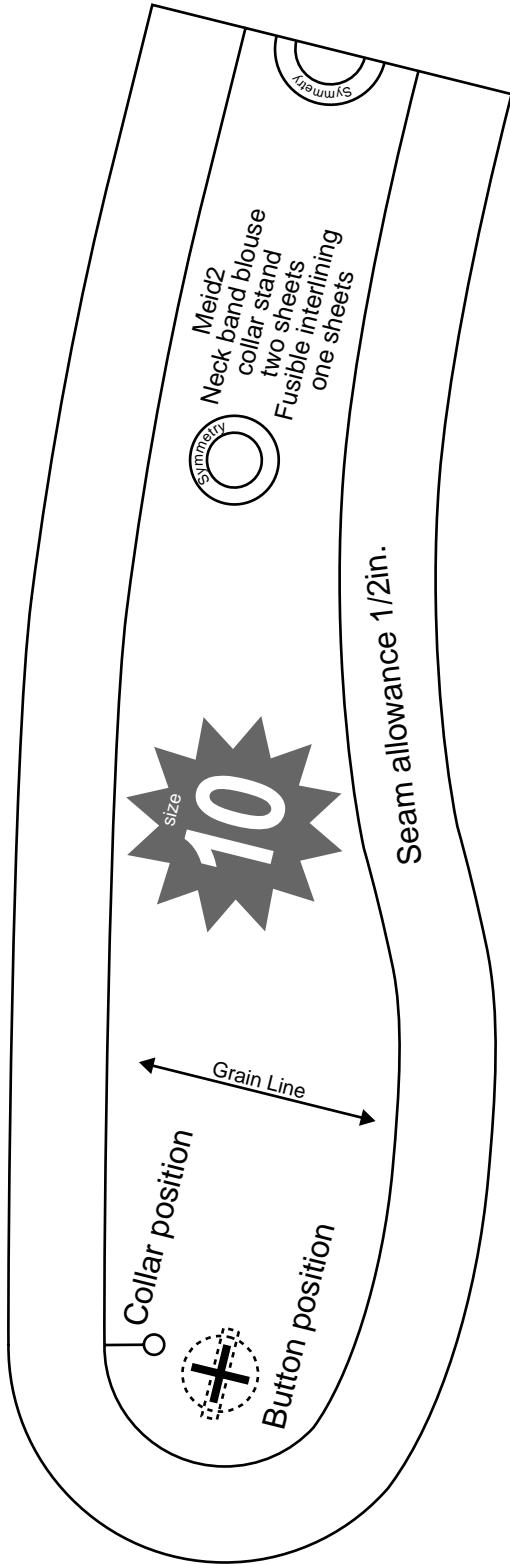
Front

Bonding line AE

Bonding line Ea



Bonding line AE



Bonding line AF

**DRCOS**

[SITE http://dr-cos.info/en](http://dr-cos.info/en) [http://dr-cos.com\(fp\)](http://dr-cos.com(fp))  
 MAIL [info@dr-cos.com](mailto:info@dr-cos.com)  
 Twitter <https://twitter.com/@dr-cos.com>  
 Facebook <https://www.facebook.com/drcoscom>



Bonding line Fa

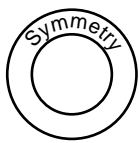
Meid2  
Apron belt two sheets  
Fusible interlining one sheets

Gathe

Bonding line Aa

Bonding line Ab

# Children's <sup>size</sup> 10



Meid2  
Ribbon top parts  
one sheets  
Fusible interlining  
one sheets

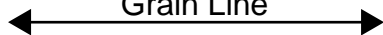
Bonding line BA

Bonding line BA

Bonding line Ba

Bonding line Bb

Grain Line



Gathered frill race

Bonding line BB

Symmetry





Bonding line BB



Bonding line Ca

Bonding line Cb

# Children's **10**<sup>size</sup>

Bonding line BC



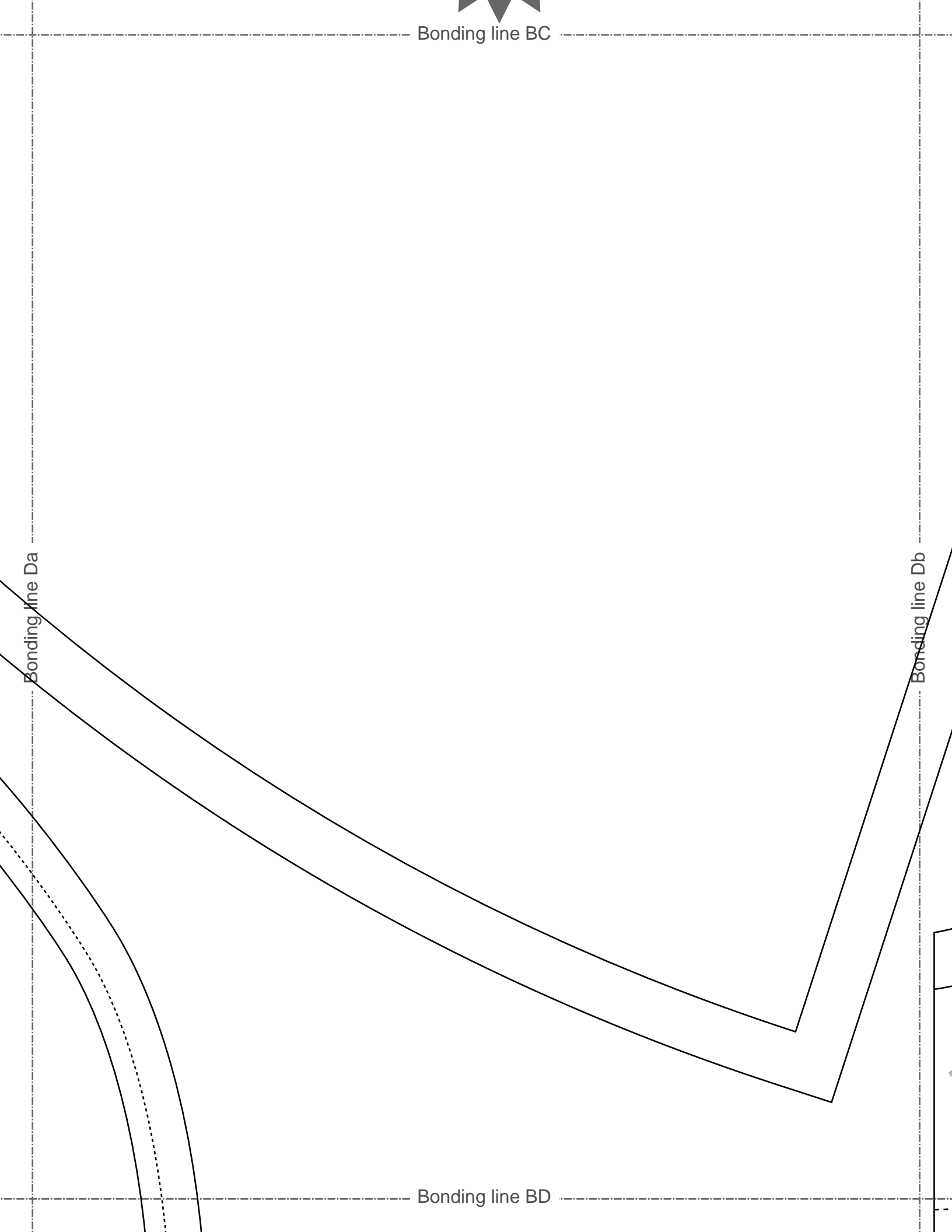
**Meid2**  
**back skirt**  
**one sheets**

Bonding line BC

Bonding line BD

Bonding line Da

Bonding line Db



Bonding line Eb

Meid2  
Ribbon core one sheets  
Fusible interlining one sheets

Velcro

Velcro



Grain Line

Gathered frill race

**DRCOS**  
SITE <http://dr-cos.info/en> <http://dr-cos.com/jp>  
MAIL [info@dr-cos.com](mailto:info@dr-cos.com)  
Twitter [https://twitter.com/dr-cos\\_com](https://twitter.com/dr-cos_com)  
facebook <https://www.facebook.com/drcoscom>

Bonding line BE

gather

Gathered frill race

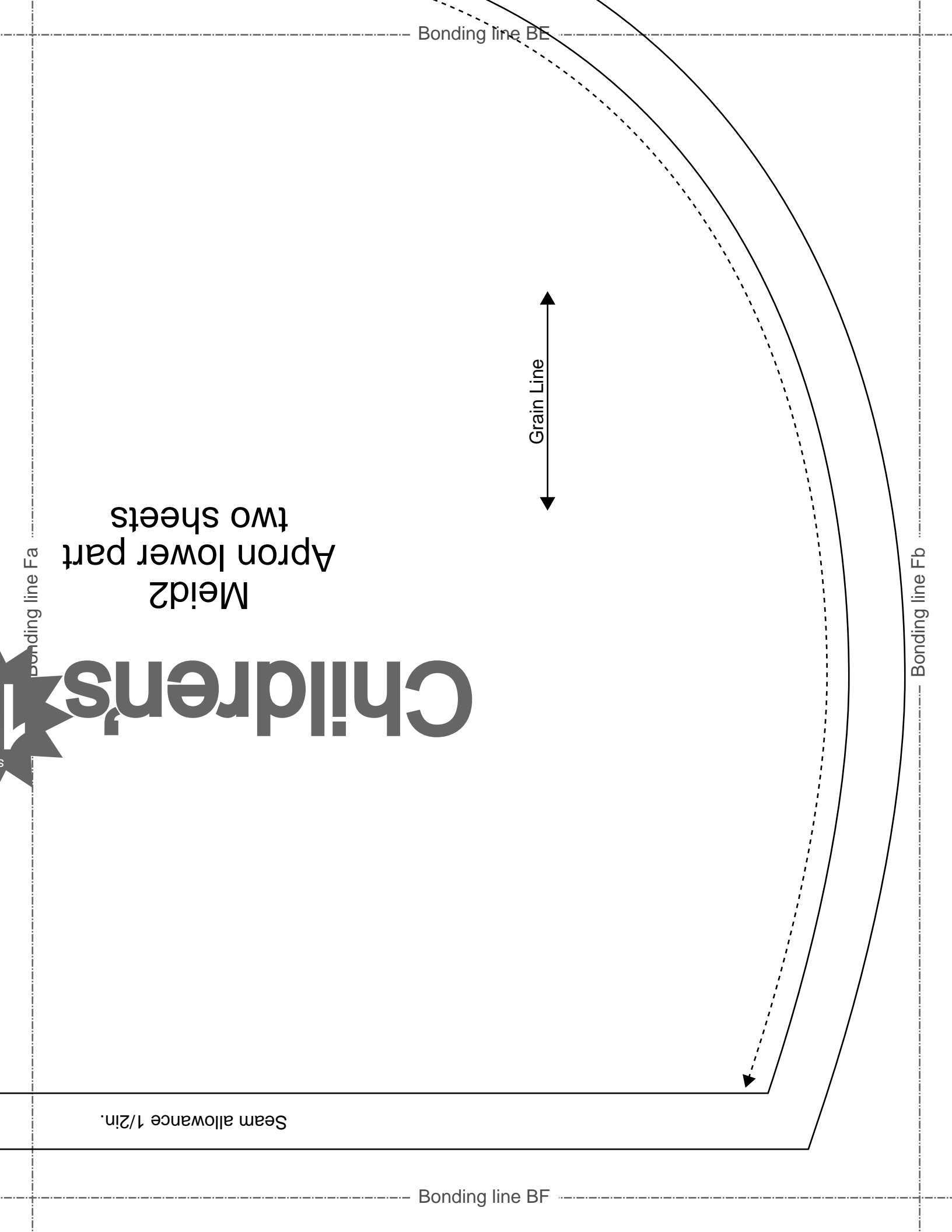
**DRCOS**

Bonding line Ea

MAIL [info@dr-cos.com](mailto:info@dr-cos.com)  
Twitter [https://twitter.com/dr-cos\\_com](https://twitter.com/dr-cos_com)  
facebook <https://www.facebook.com/drcoscom>

facebook <https://www.facebook.com/drcoscom>

Bonding line BD



Bonding line BE

Grain Line

Bonding line Fb

Bonding line BF

Bonding line Fa

Children's Meid2 Apron lower part two sheets

Seam allowance 1/2in.

# Children's <sup>size</sup> 10

Gathered frill race

**DRCOS**

SITE <http://dr-cos.info/en> <http://dr-cos.com/jp>

MAIL [info@dr-cos.com](mailto:info@dr-cos.com)

Twitter [https://twitter.com/drcos\\_com](https://twitter.com/drcos_com)

facebook <https://www.facebook.com/drcoscom>

Bonding line Ab

Bonding line Ac

Bonding line CA

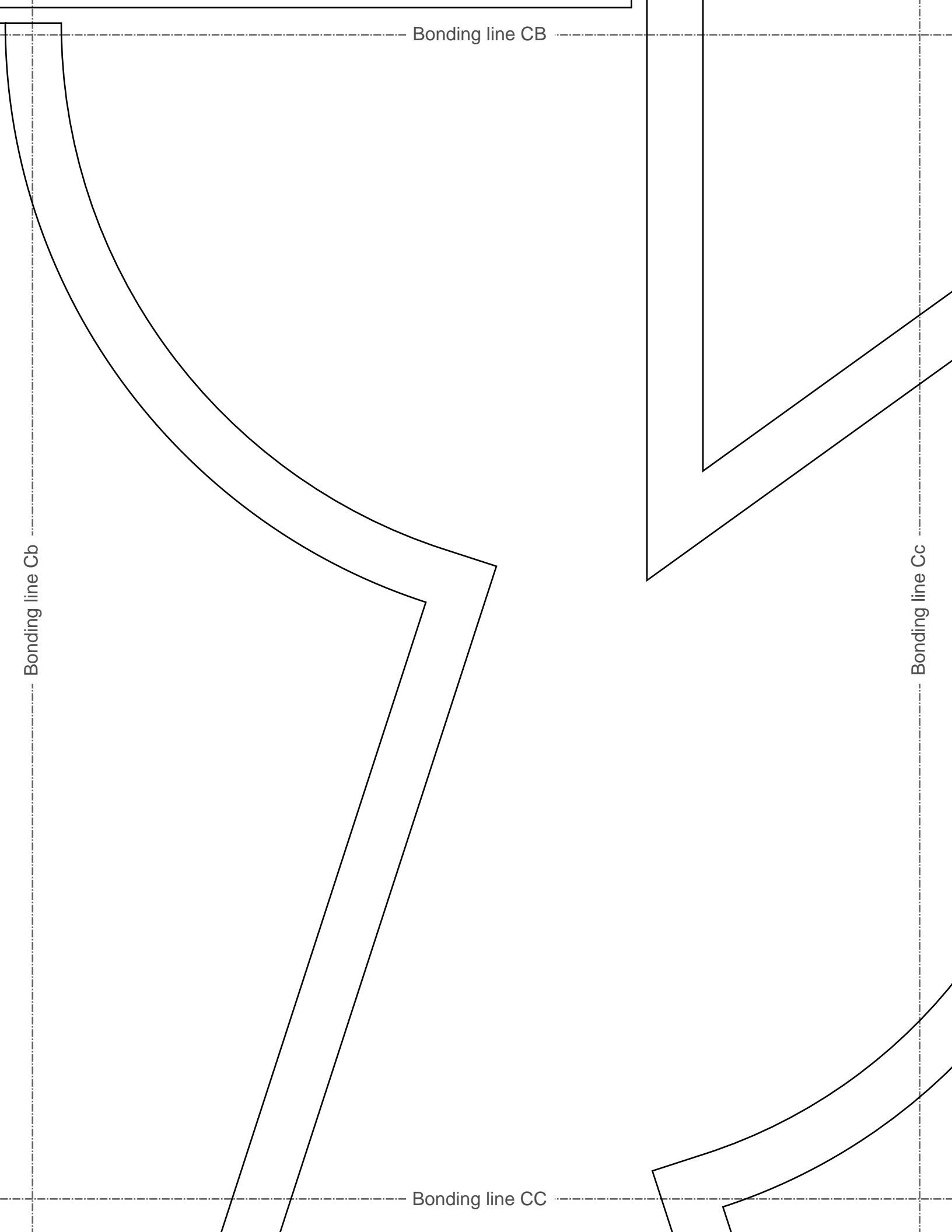
Bonding line CA

Bonding line Bb

Gathered frill race

Bonding line Bc

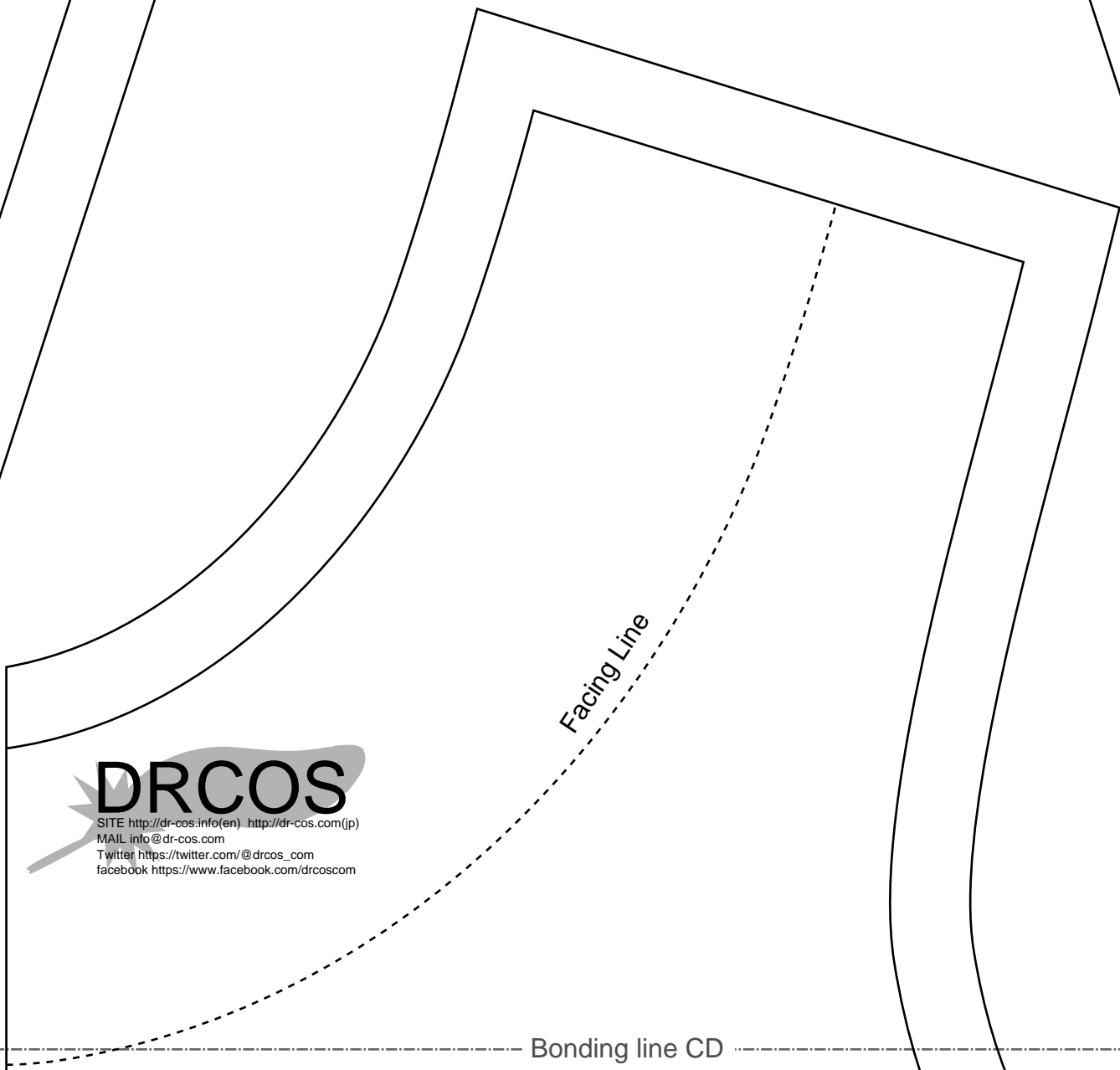
Bonding line CB



Bonding line CC

Bonding line Db

Bonding line Dc



Facing Line

**DRCOS**

SITE [http://dr-cos.info\(en\)](http://dr-cos.info(en)) [http://dr-cos.com\(jp\)](http://dr-cos.com(jp))  
MAIL [info@dr-cos.com](mailto:info@dr-cos.com)  
Twitter [@drcos\\_com](https://twitter.com/@drcos_com)  
facebook <https://www.facebook.com/drcoscom>

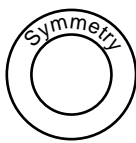
Bonding line CD



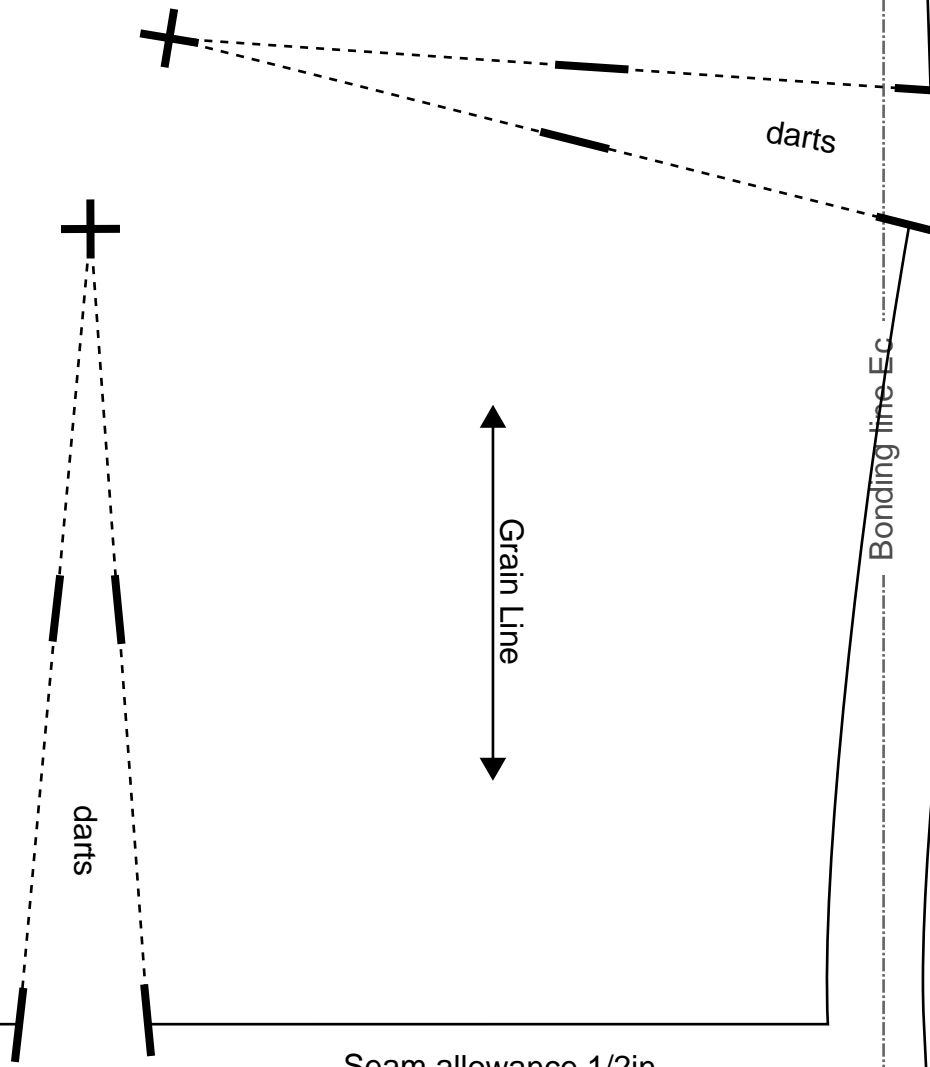
Bonding line CD

# Children's <sup>size</sup> 10

Bonding line Eb



Meid2  
Front body  
one sheets



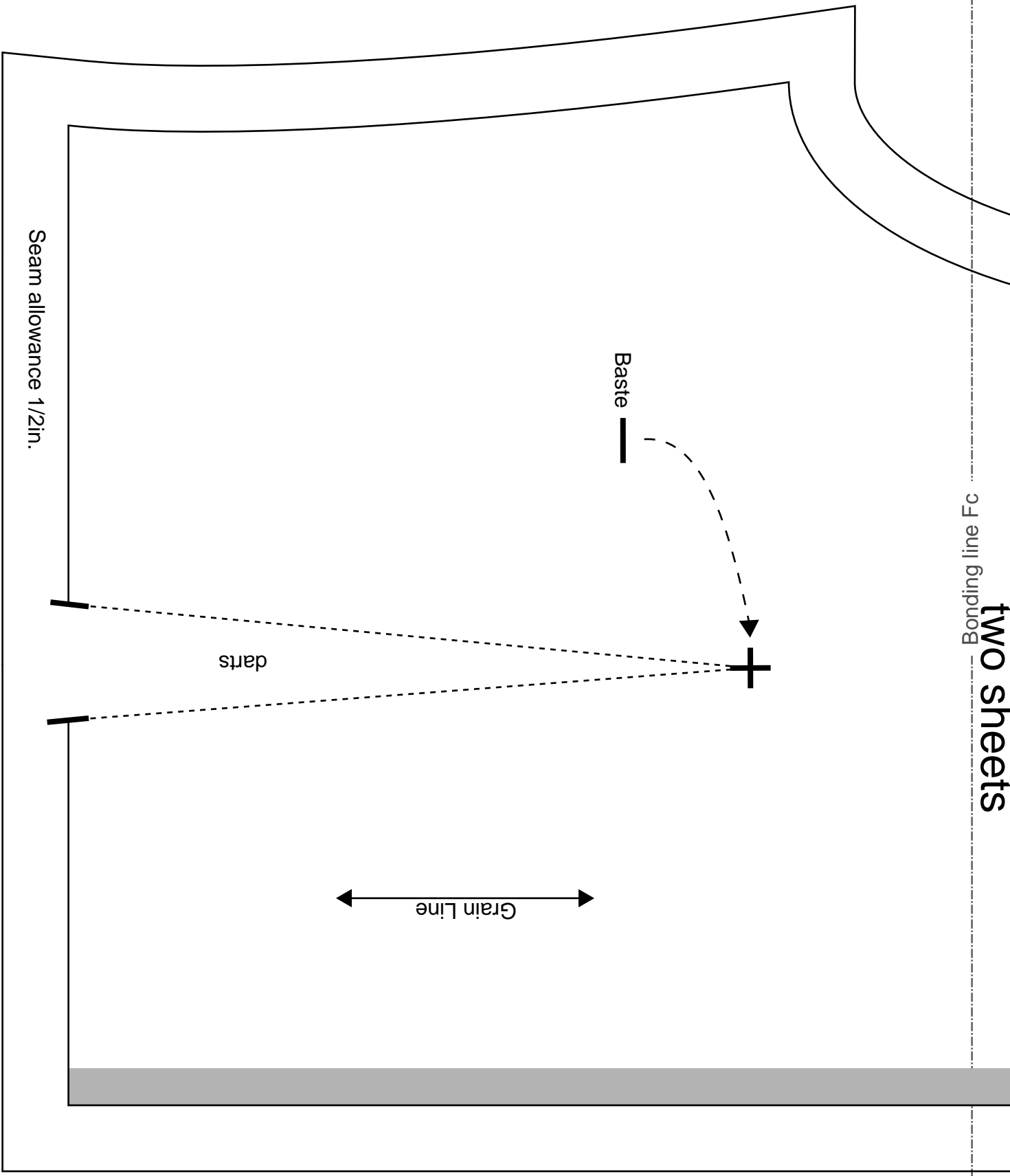
Bonding line Ec

Bonding line CE

Bonding line CE

Bonding line Fc

two sheets



Bonding line CF

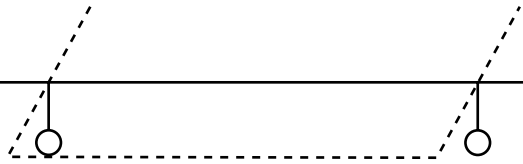
Bonding line Fb

Seam allowance 1/2in.

darts

Baste

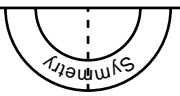
Grain Line



Shoulder strap position

**DRCOS**

SITE [http://dr-cos.info\(en\)](http://dr-cos.info(en)) [http://dr-cos.com\(jp\)](http://dr-cos.com(jp))  
MAIL [info@dr-cos.com](mailto:info@dr-cos.com)  
Twitter [https://twitter.com/drcos\\_com](https://twitter.com/drcos_com)  
facebook <https://www.facebook.com/drcoscom>



Bonding line Ac

Bonding line Ad

Bonding line DA

Bonding line DA

Bonding line Bc

Bonding line Bd

Bonding line DB



Grain Line

Bonding line DB



Bonding line Cc

Bonding line Cd

Bonding line DC

Bonding line DC

# Children's <sup>size</sup> 10

Meid2  
front skirt  
two sheets

Bonding line Dd

Bonding line Dc

Bonding line DD

Bonding line DD

**DRCOS**

SITE <http://dr-cos.info/en> <http://dr-cos.com/jp>  
MAIL [info@dr-cos.com](mailto:info@dr-cos.com)  
Twitter [@drcos\\_com](https://twitter.com/@drcos_com)  
facebook <https://www.facebook.com/drcoscom>

Bonding line Ec

Bonding line Ed

# Children's

Meid2  
cuffs two sh  
Fusible interlining

Grain Line

Seam allowance 1/2in.

Bonding line DE

# Children's <sup>size</sup> 10

Meid2

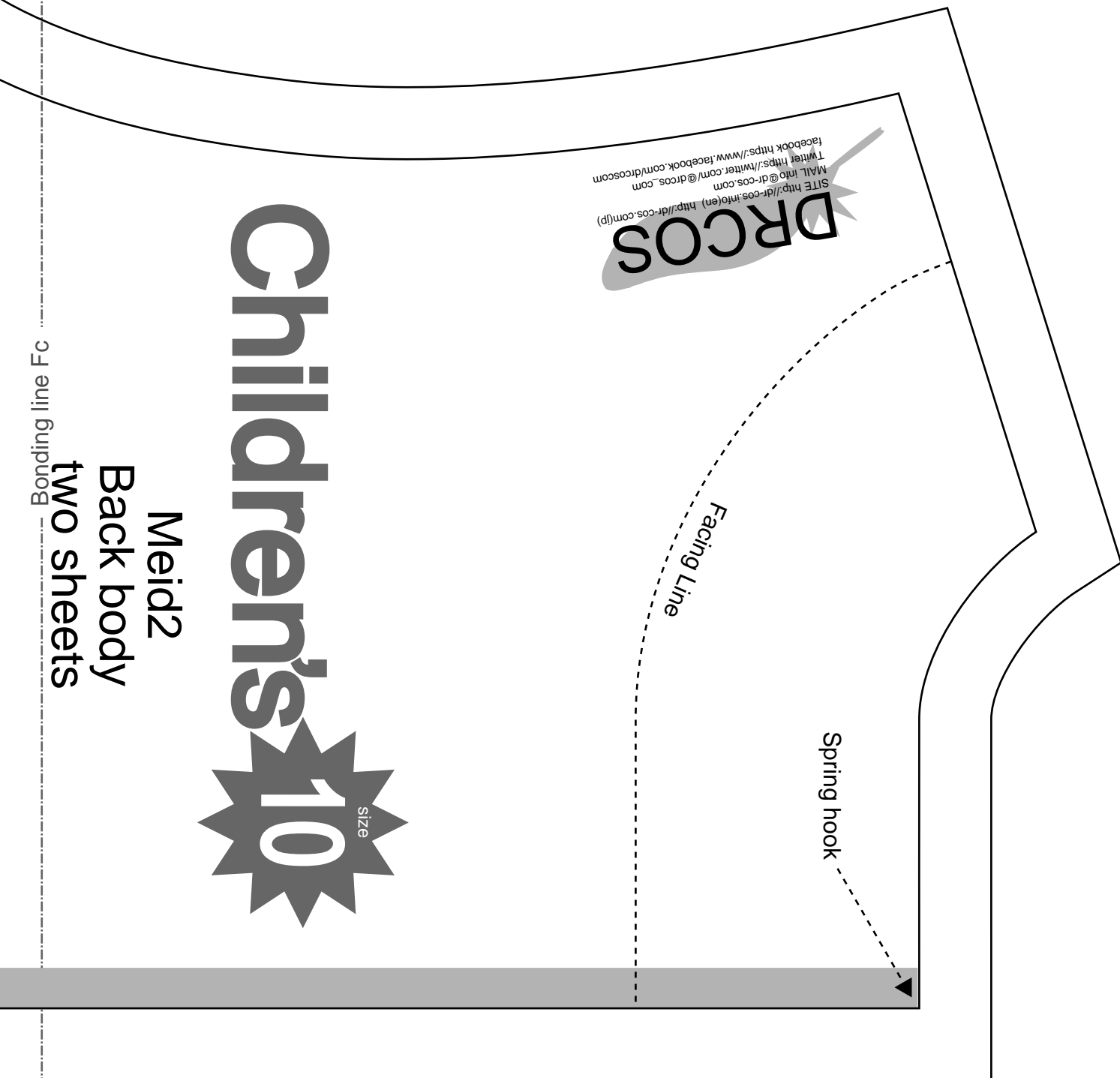
Back body

two sheets

**DRCOS**  
 STE <http://dr-cos.info/en> [http://dr-cos.com\(fp](http://dr-cos.com(fp)  
 MAIL [info@dr-cos.com](mailto:info@dr-cos.com)  
 Twitter <https://twitter.com/dr-cos.com>  
 Facebook <https://www.facebook.com/drcoscom>

Facing Line

Spring hook





3  
m.jp  
scom

Velcro

Bonding line Ad

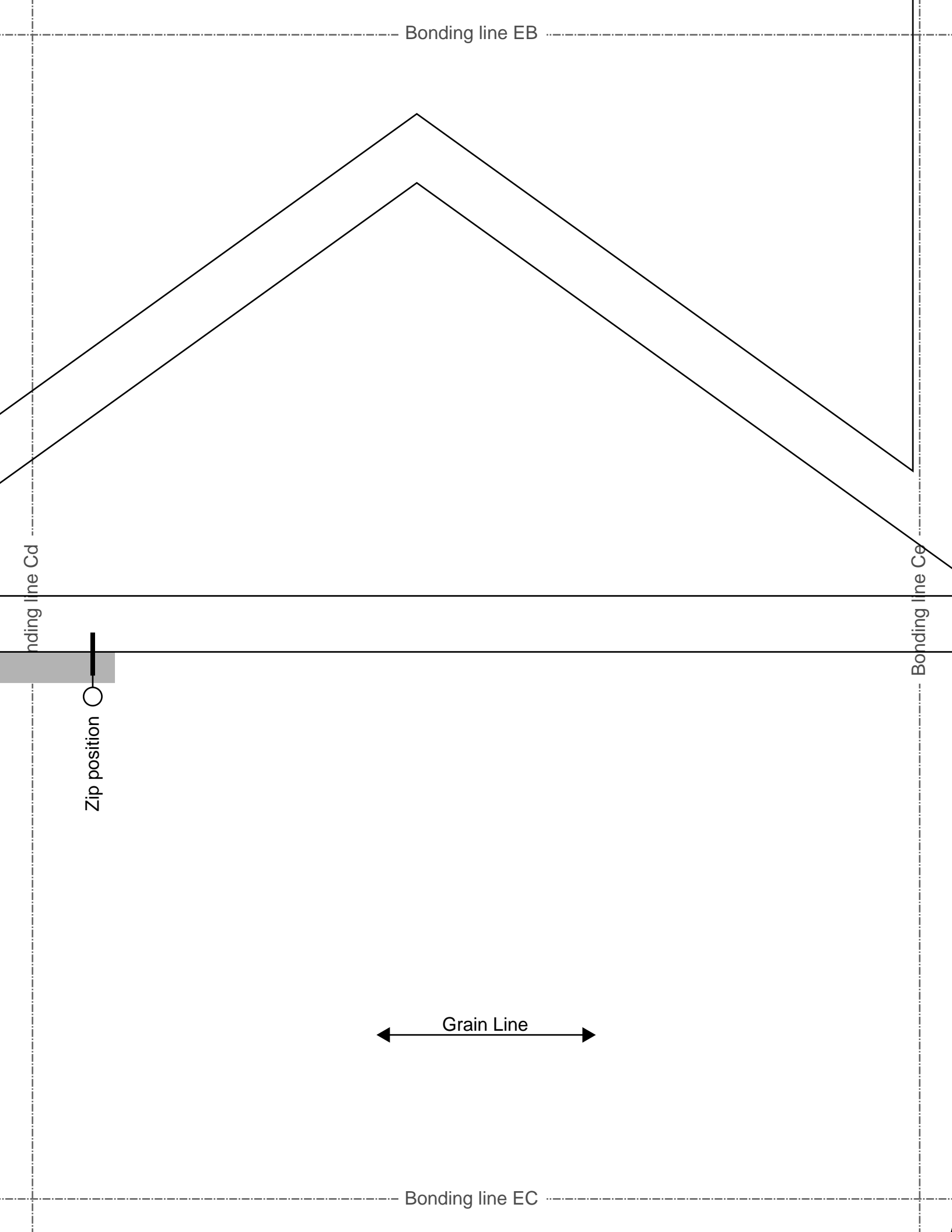
Bonding line Ae

Bonding line EA

# Children's <sup>size</sup> 10



**Meid2**  
**Ribbon lower part**  
**one sheets**



FRONT SKIRT  
two sheets

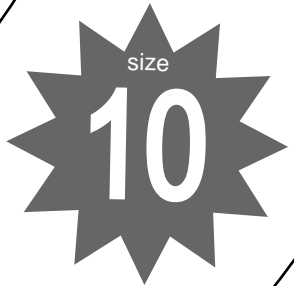
Bonding line Dd

Bonding line EC

Bonding line De

Seam allowance 1/2in.

Grain Line



Bonding line ED

Meid2  
Front body facing  
two sheets  
interlining  
two sheets

Seam allowance 1/2in.

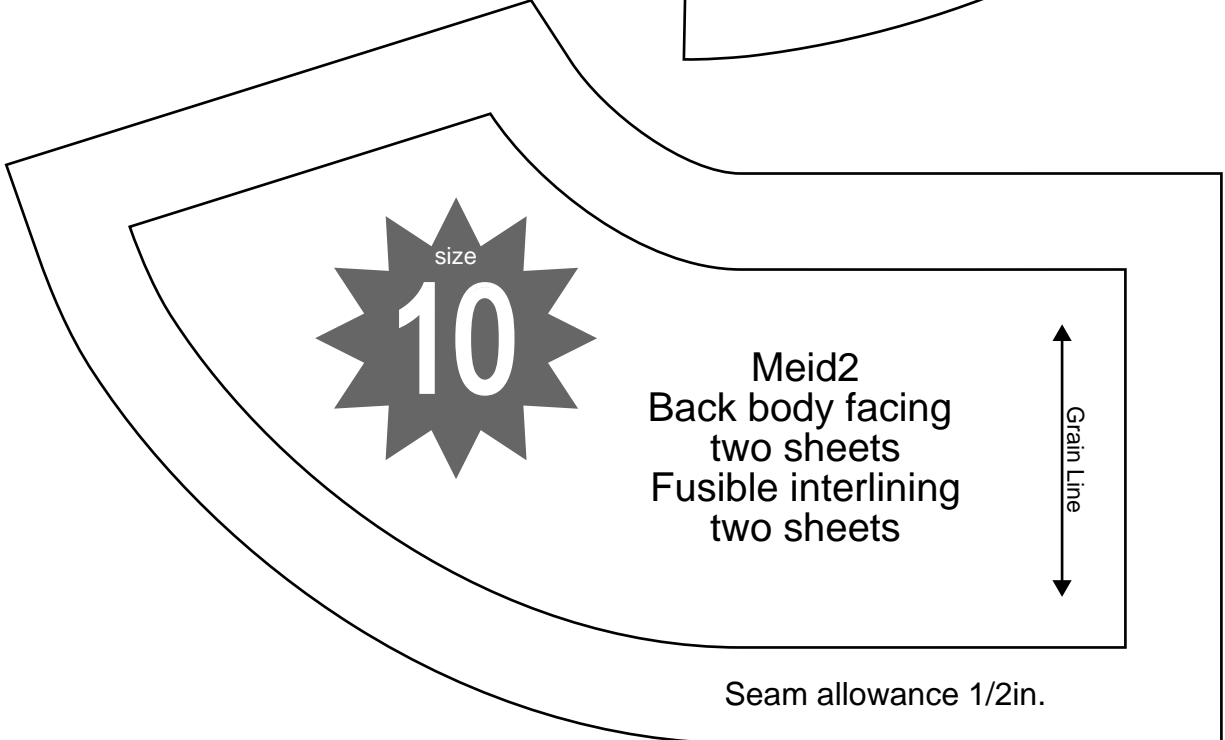
Bonding line ED

Meid2  
Front body facing  
one sheets  
Fusible interlining  
one sheets

Seam allowance 1/2in



Bonding line Ed



Bonding line Ee

**DRCOS**  
 SITE [http://dr-cos.info\(en\)](http://dr-cos.info(en)) [http://dr-cos.com\(jp\)](http://dr-cos.com(jp))  
 MAIL [info@dr-cos.com](mailto:info@dr-cos.com)  
 Twitter [https://twitter.com/@drcos\\_com](https://twitter.com/@drcos_com)  
 facebook <https://www.facebook.com/drcoscom>

Meid2  
two sheets  
interlining two sheets

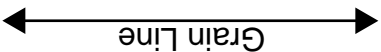
Seam allowance 1/2in.

Bonding line EE

Shoulder strap position



Shoulder strap position



# Children's <sup>size</sup> 10

Meid2  
 Apron top parts  
 two sheets

Seam allowance 1/2in.

Children's <sup>size</sup>10

**DRCOS**

SITE <http://dr-cos.info/en>, <http://dr-cos.com/ip>  
MAIL [info@dr-cos.com](mailto:info@dr-cos.com)  
Twitter [@drcoos\\_com](https://twitter.com/@drcoos_com)  
facebook <https://www.facebook.com/drcoscom>



Children's <sup>size</sup>10

**DRCOS**

SITE <http://dr-cos.info/en>, <http://dr-cos.com/ip>  
MAIL [info@dr-cos.com](mailto:info@dr-cos.com)  
Twitter [@drcoos\\_com](https://twitter.com/@drcoos_com)  
facebook <https://www.facebook.com/drcoscom>



Children's <sup>size</sup>10

**DRCOS**

SITE <http://dr-cos.info/en>, <http://dr-cos.com/ip>  
MAIL [info@dr-cos.com](mailto:info@dr-cos.com)  
Twitter [@drcoos\\_com](https://twitter.com/@drcoos_com)  
facebook <https://www.facebook.com/drcoscom>

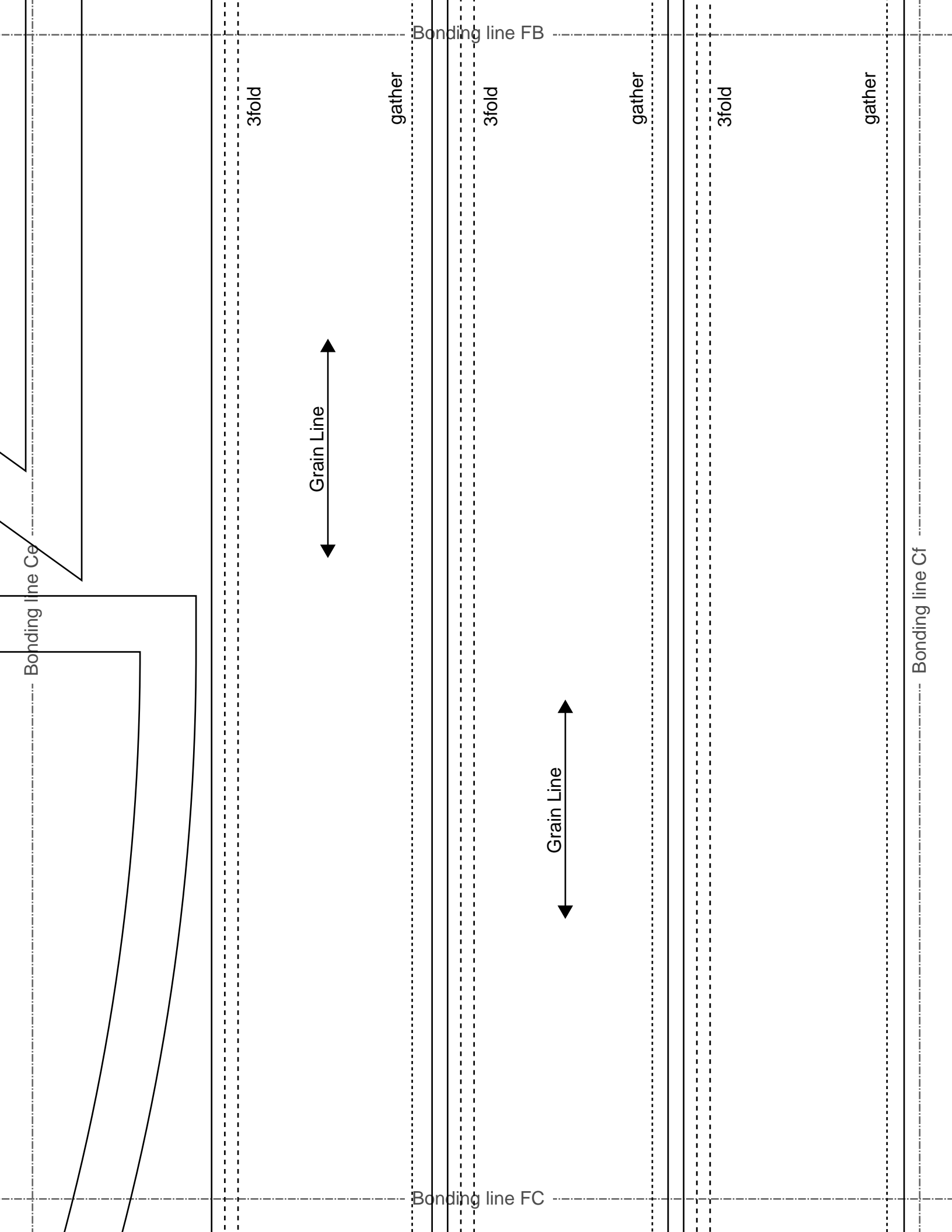


Meid2  
Apron shoulder strap gather frill  
two sheets

Meid2  
Skirt hem gathered frill  
four sheets

Meid2  
Apron lower part gathered frill  
one sheets





1/2in.

**DRCOS**

Website: <http://drcos.info/>  
Email: [info@drcos.com](mailto:info@drcos.com)  
Twitter: <https://twitter.com/drcos>  
Facebook: <https://www.facebook.com/drcos.com>



Bonding line De

Bonding line FC

Bonding line FD



Bonding line Df

ce 1/2in

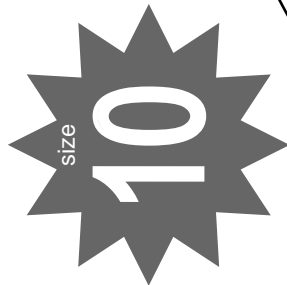
Bonding line Ee

Bonding line FD

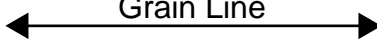
Meid2  
Collar  
two sheets  
Fusible interlining  
one sheets



Seam allowance 1/2in.



Grain Line



Back

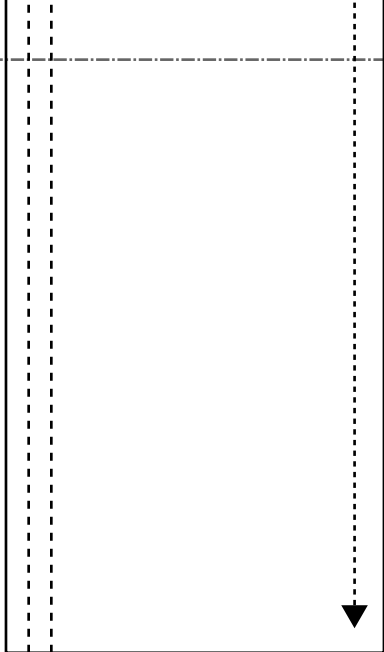


Bonding line FE

Bonding line Ef

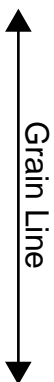
Bonding line FE

Bonding line Ff



Meid2  
 Apron shoulder strap two sheets  
 Fusible interlining one sheets

Bonding line FF



Gathered frill race

Bonding line Fe

Bonding line FF

# Children's <sup>Size</sup> 10

**DRCOS**  
 SITE <http://dr-cos.info/en> <http://dr-cos.com/jp>  
 MAIL [info@dr-cos.com](mailto:info@dr-cos.com)  
 Twitter <https://twitter.com/dr-cos>  
 facebook <https://www.facebook.com/drcoscom>

Front →

Bonding line Ge

Bonding line Gf

Bonding line FG