

Grain Line



Bonding line Aa

Seam allowance 1/2in.

Bonding line AA

DRCOS

[SITE http://dr-cos.info/en](http://dr-cos.info/en) | [http://dr-cos.com\(jp\)](http://dr-cos.com/jp)
[MAIL info@dr-cos.com](mailto:info@dr-cos.com)
[Twitter https://twitter.com/dr-cos](https://twitter.com/dr-cos) | [facebook https://www.facebook.com/drcos.com](https://www.facebook.com/drcos.com)

Children's ^{size} 10

Larger Collar Shirt
Back Body
one sheets



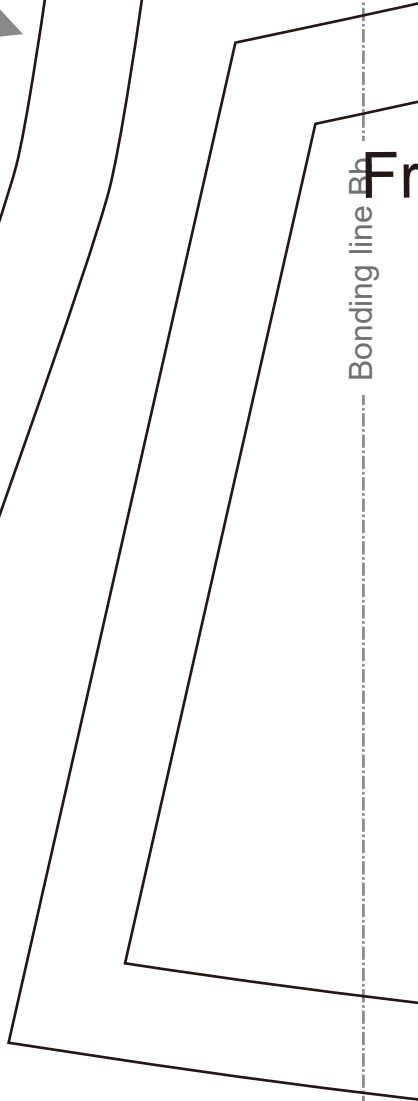
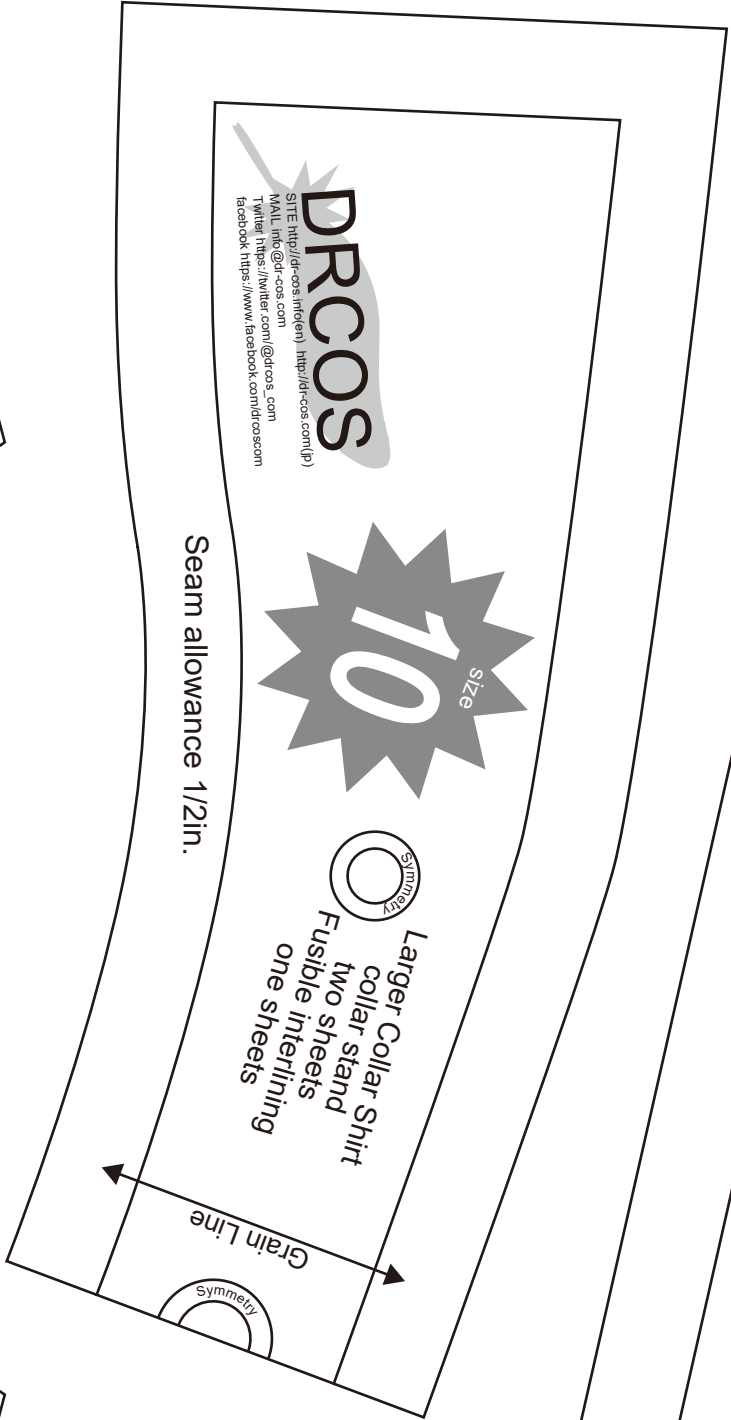
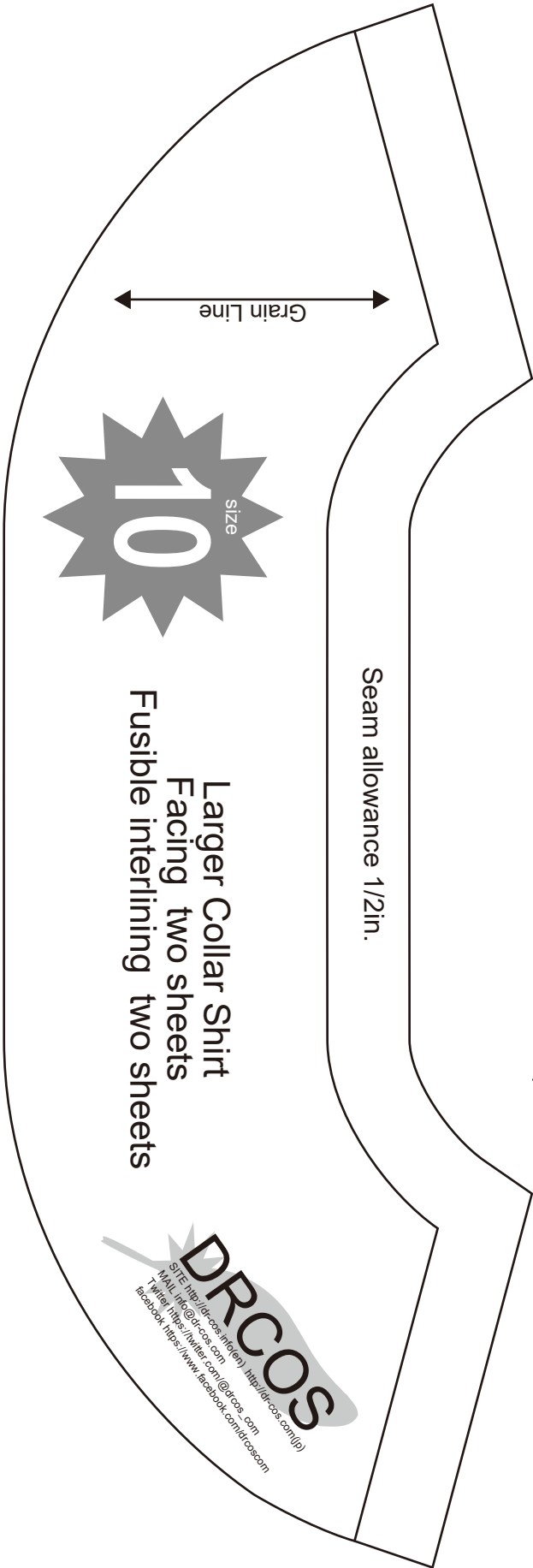
Bonding line Ab

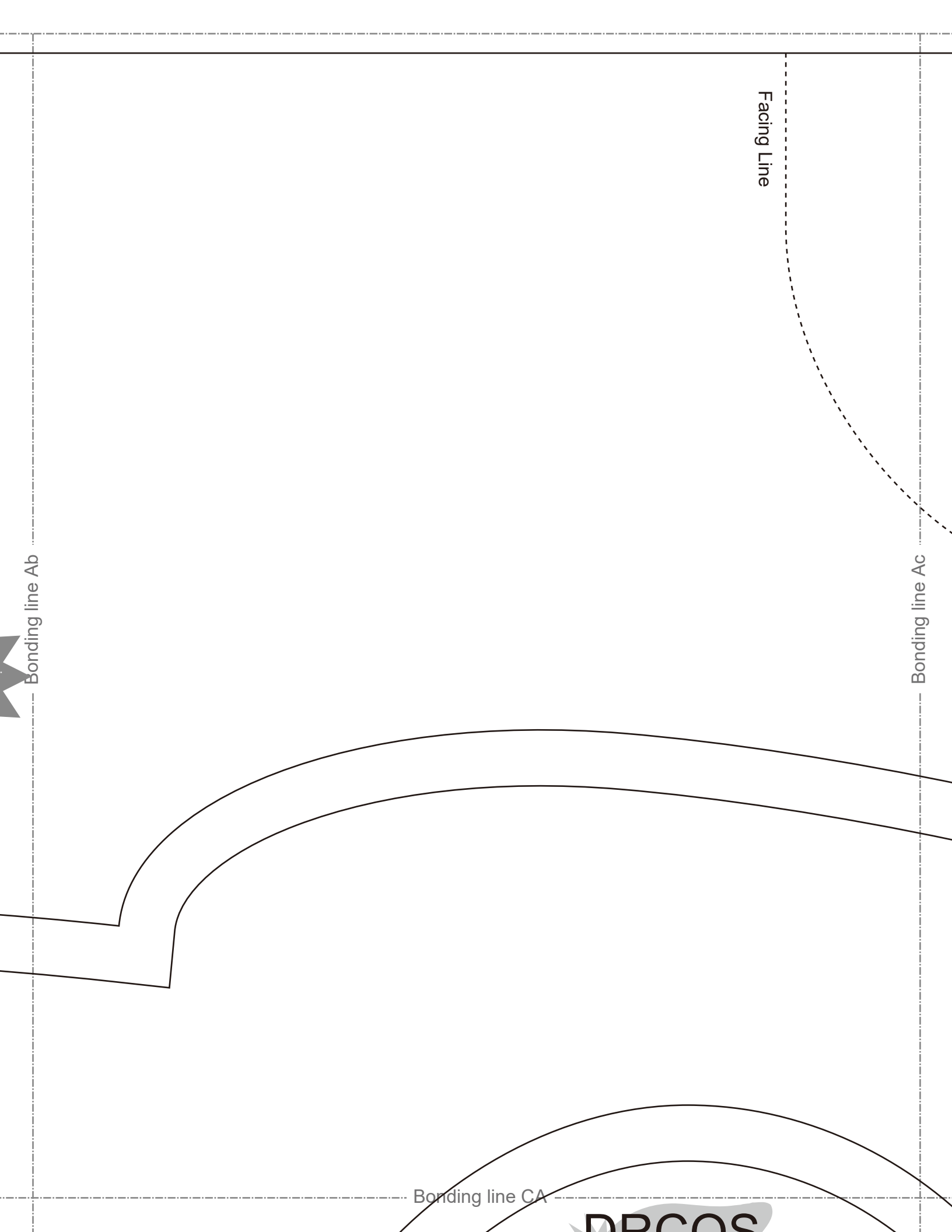
Bonding line BA

Bonding line Aa



Grain





Bonding line CA

DRCOS

SITE [http://dr-cos.info\(en\)](http://dr-cos.info(en)) [http://dr-cos.com\(jp\)](http://dr-cos.com(jp))
MAIL info@dr-cos.com
Twitter https://twitter.com/drcos_com
facebook <https://www.facebook.com/drcoscom>

Bonding line Bb
Front

Children's

Bonding line Bc



Larger Collar Shirt
Sleeve
two sheets

Seam allowance 1/2in.

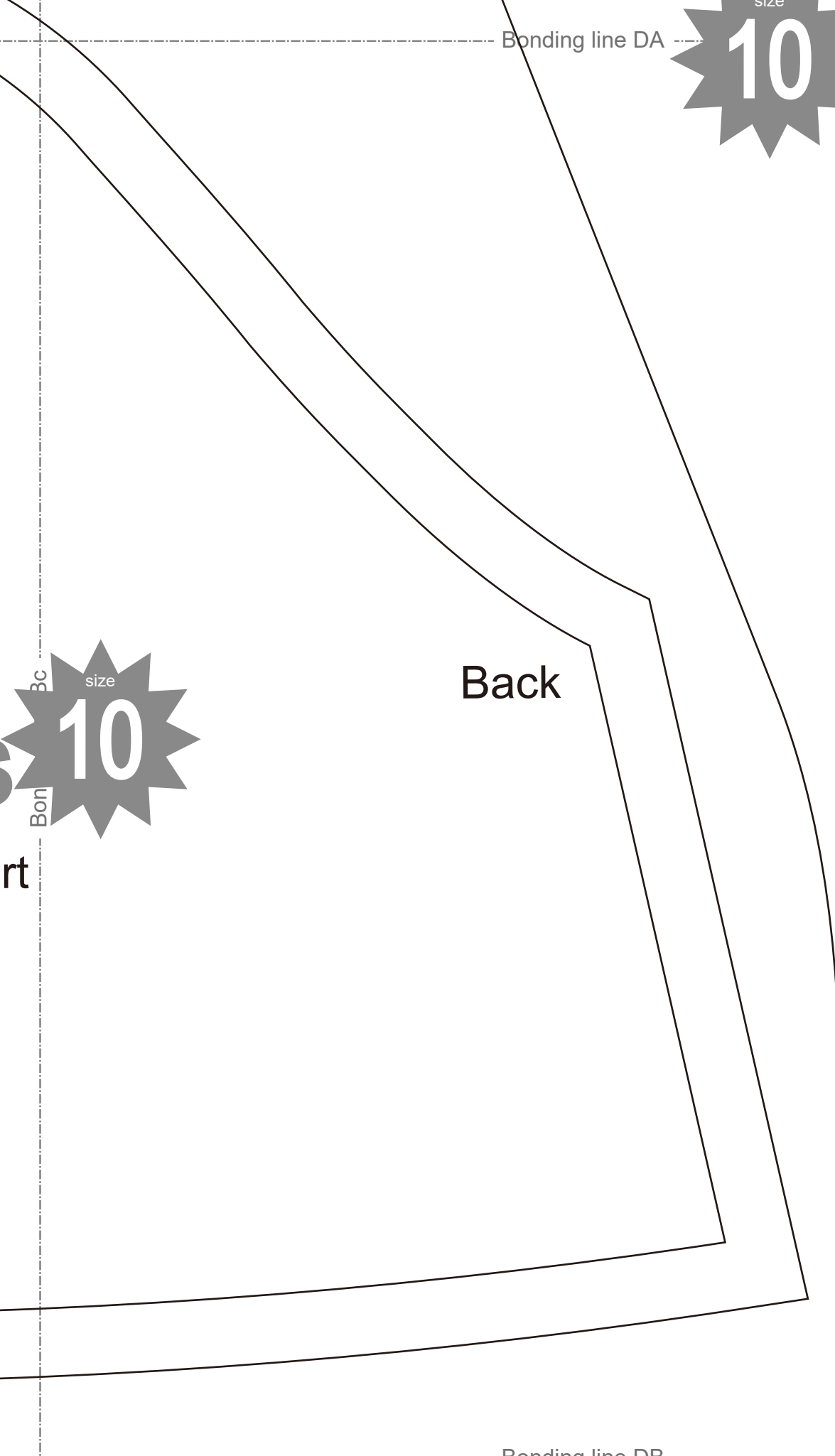
Bonding line CB

Bonding line Ac

Bonding line Ad

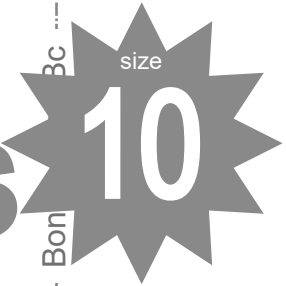
Bonding line DA





Bonding line DA

Bonding line DB

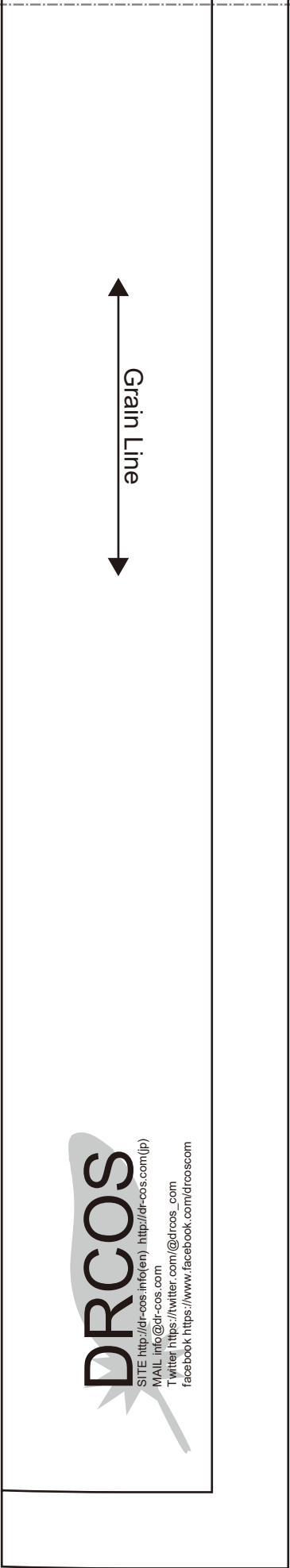
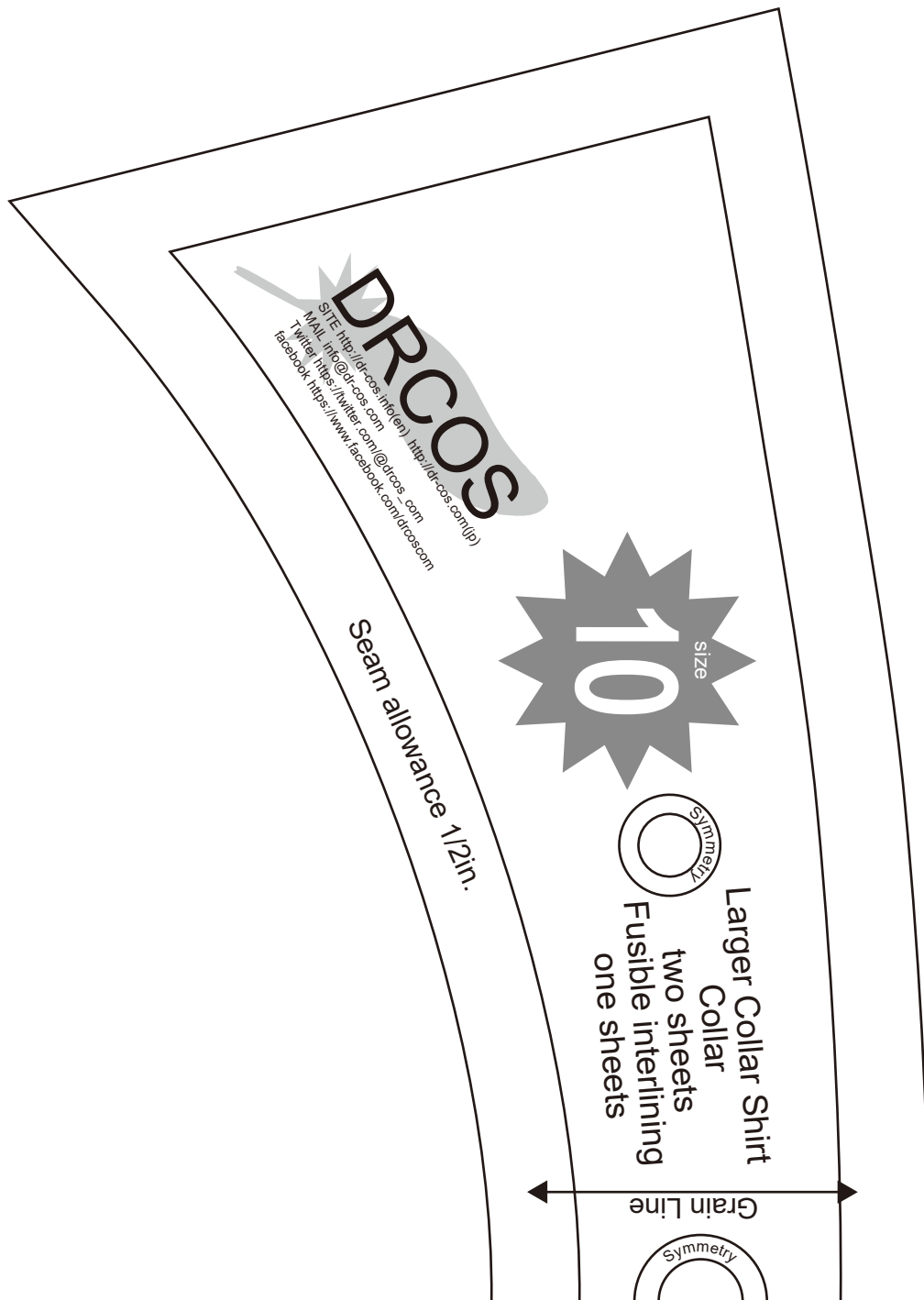


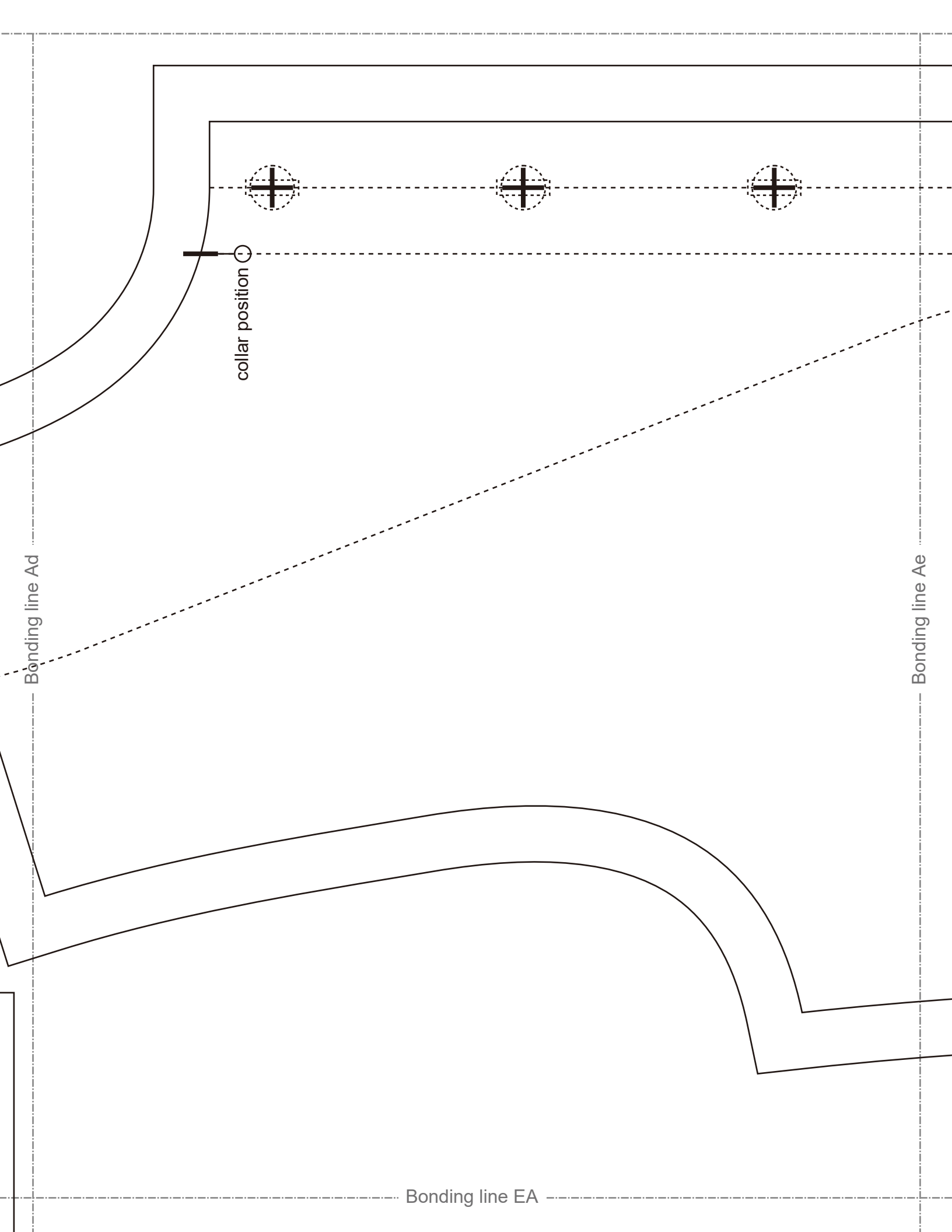
Back

Larger Collar Shirt
Facing two sheets Fusible interlining two sheets

Seam allowance 1/2in.

Bonding line Bd





Bonding line Ae

Bonding line Af

Children's ^{size} 10

Larger Collar Shirt
Front Body
Two sheets

Facing Line



Bonding line FA

Bonding line Af



Button position



Grain Line

Baste



Seam allowance 1/2in.

Bonding line GA

DRCOS
 SITE <http://dr-cos.info/en> <http://dr-cos.com/jp>
 MAIL info@dr-cos.com
 Twitter https://twitter.com/dr-cos_com
 facebook <https://www.facebook.com/drcoscom>