

Seam allowance 1/2in.

Bonding line AA

Bonding line Aa

Bonding line AA

Zip ends



size



Knickerbockers
Extension parts
one sheets
Fusible interlining
one sheets

http://dr-cos.com(dp)
com/@dr-cos.com
v.facebook.com/dr-cos.com

SOC

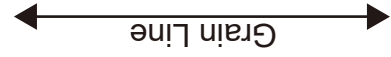
Bonding line Ba

Line

Bonding line AB

Bonding line AB

Bonding line Ca

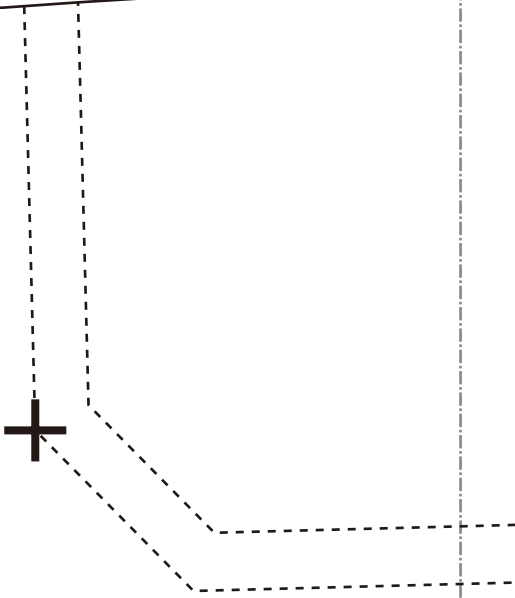


Bonding line AC

Seam allowance 1/2in.

SITE <http://dr-cos.info/en> | <http://dr-cos.com/jp>
MAIL info@dr-cos.com
TWITTER https://twitter.com/drcos_com
FACEBOOK <https://www.facebook.com/drcoscom>

Knickerbockers
Back Body
two sheets



Bonding line Aa

Bonding line Ab

Bonding line BA

Bonding line BA

Bonding line Ba

Bonding line Bb

DRCO
 SITE <http://dr-cos.info/en> <http://dr-cos.com>
 MAIL info@dr-cos.com
 Twitter <https://twitter.com/dr-cos>
 facebook <https://www.facebook.com/dr-cos>

Seam allowance 1/2in.

Grain Line →

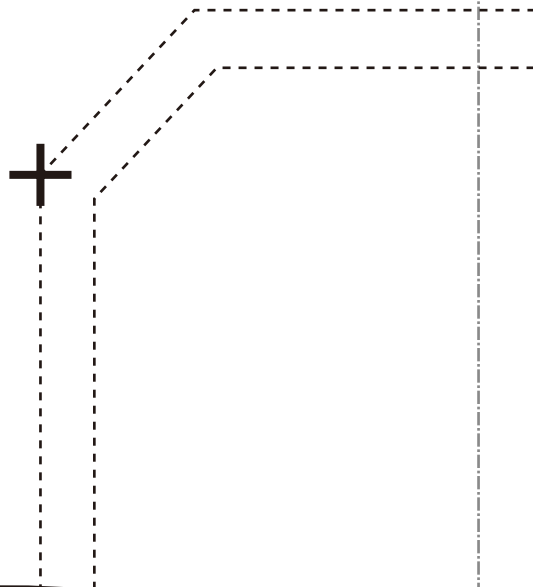
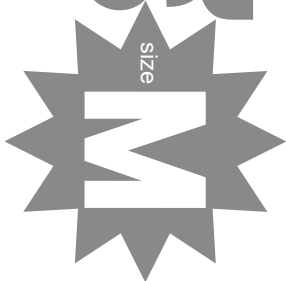
Bonding line BB

Bonding line BB

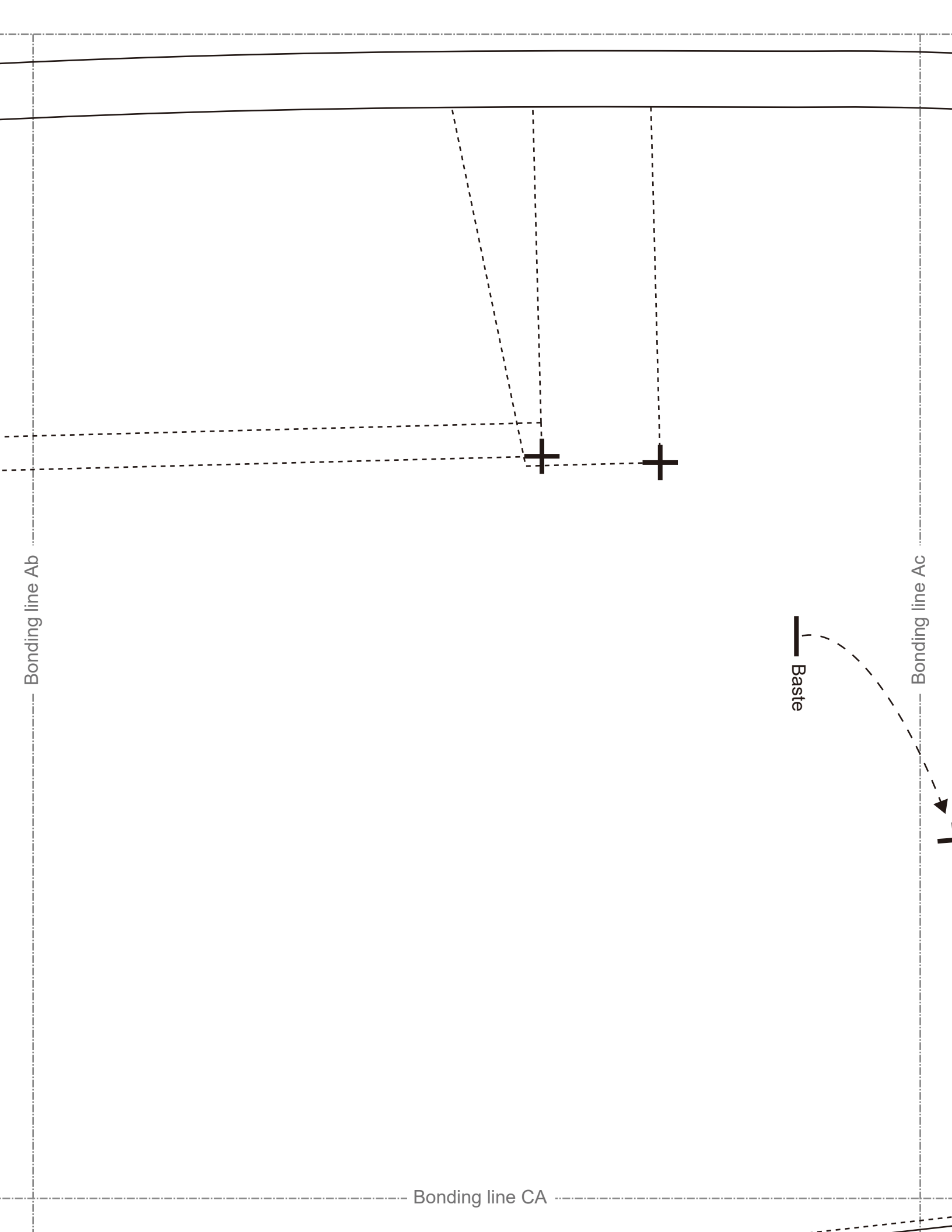
Bonding line Ca

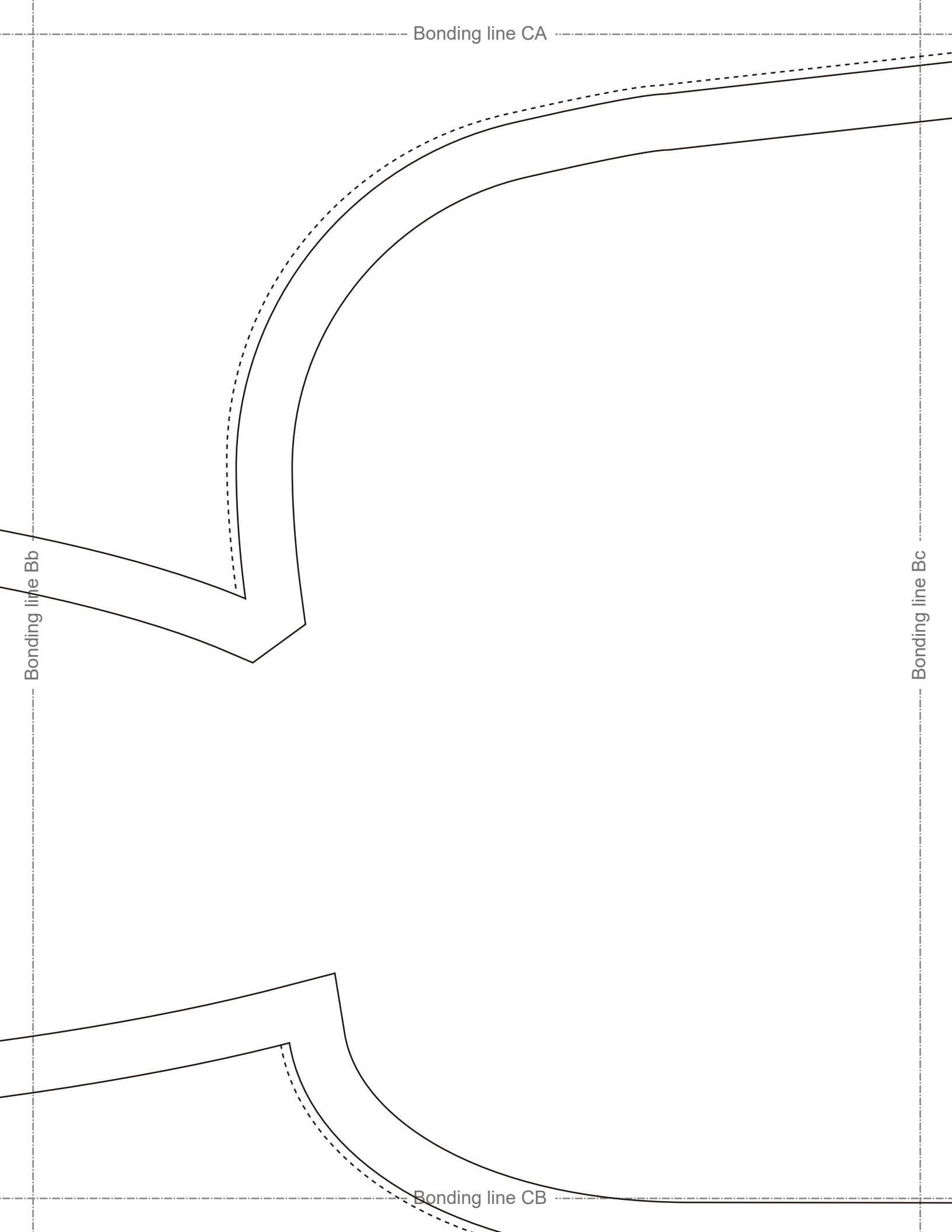
Bonding line Cb

LADIES'
Knickerbockers
Front Body
two sheets



Bonding line BC





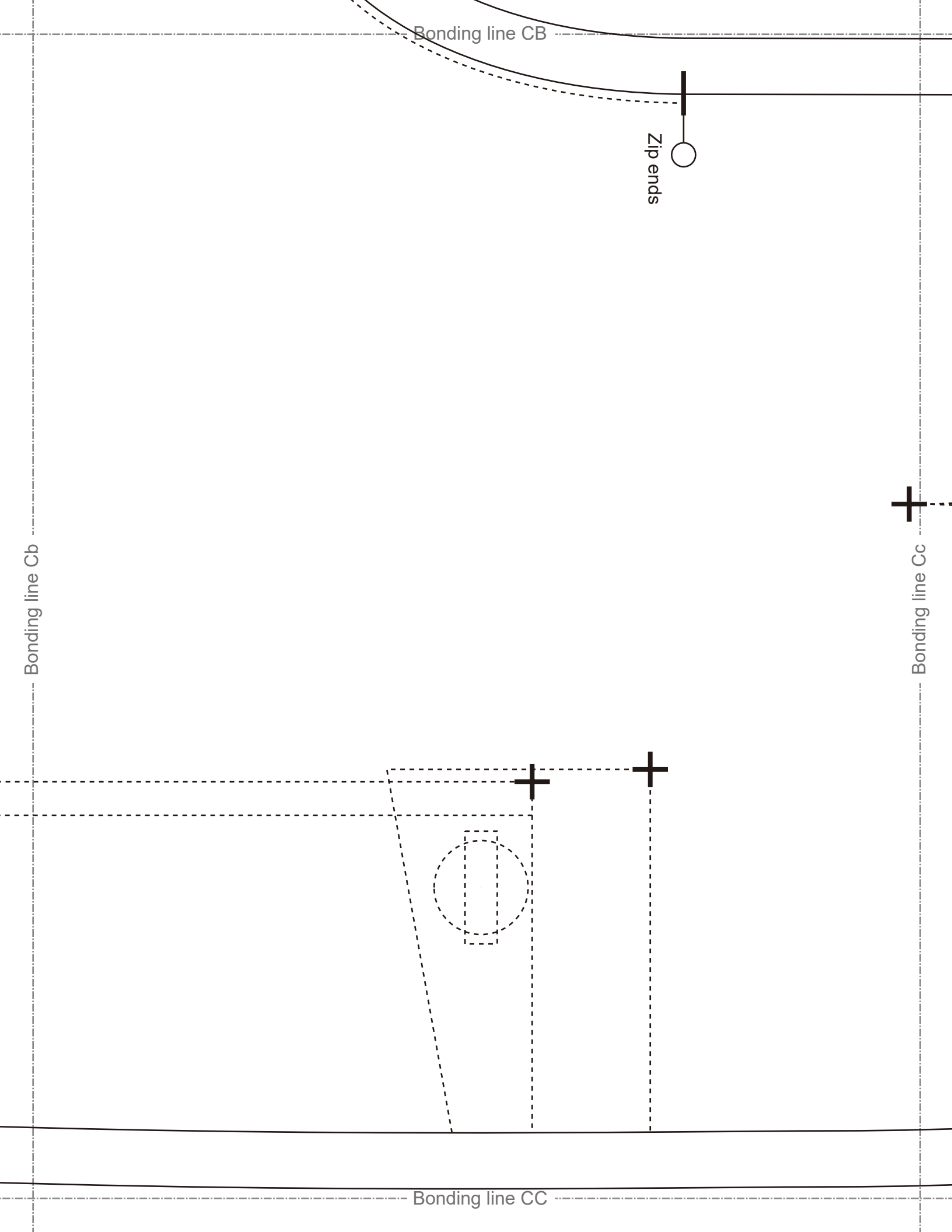
Bonding line CB

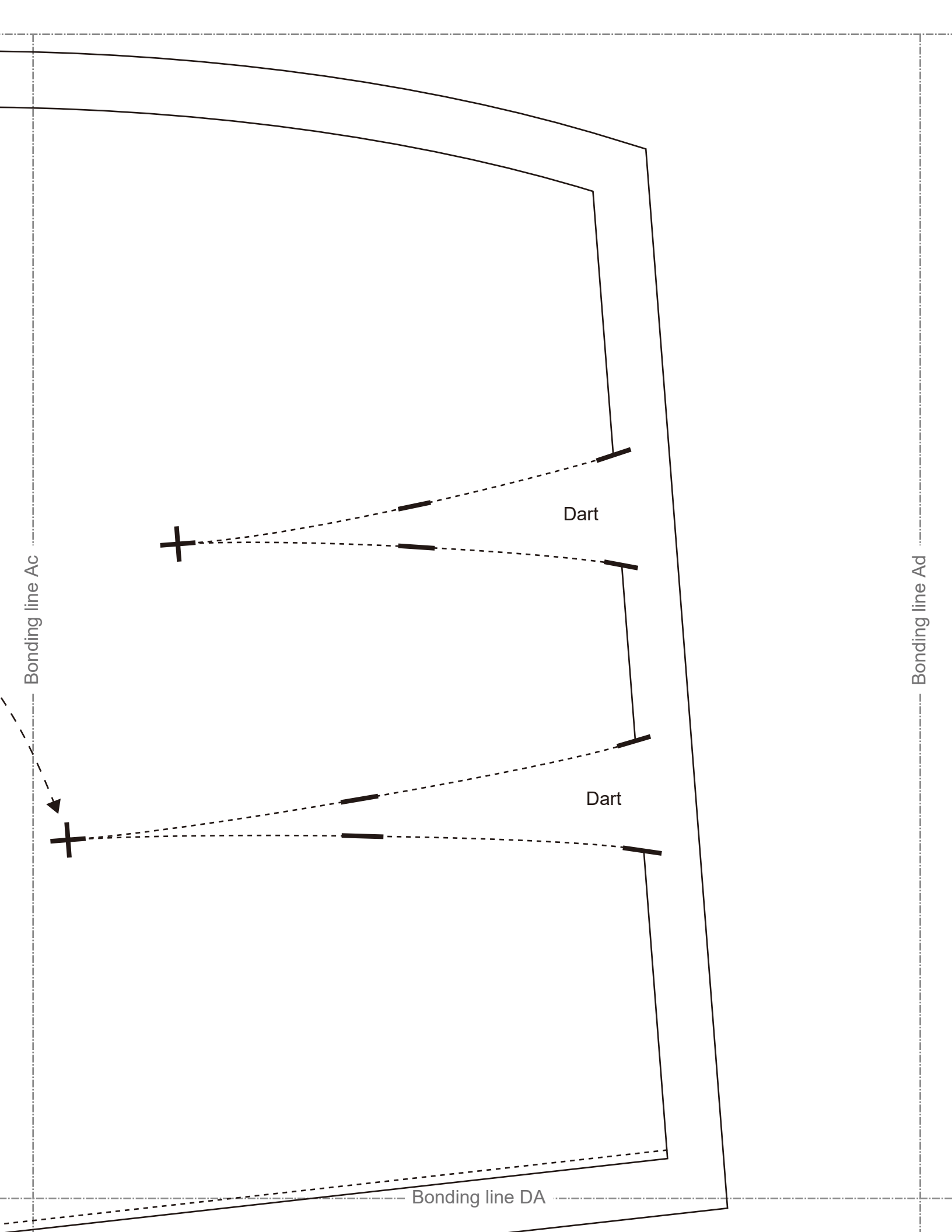
spue diZ

Bonding line Cb

Bonding line Cc

Bonding line CC

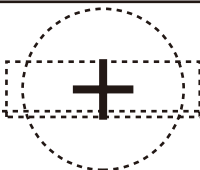




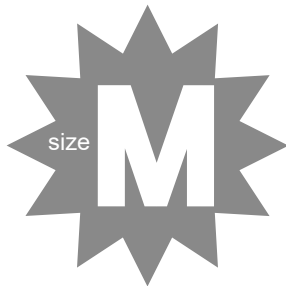
Bonding line DA

Bonding line Bc

Bonding line Bd



Button position



Seam allowance 1/2in.

Bonding line DB

Bonding line DB

Bonding line Cc

Dart

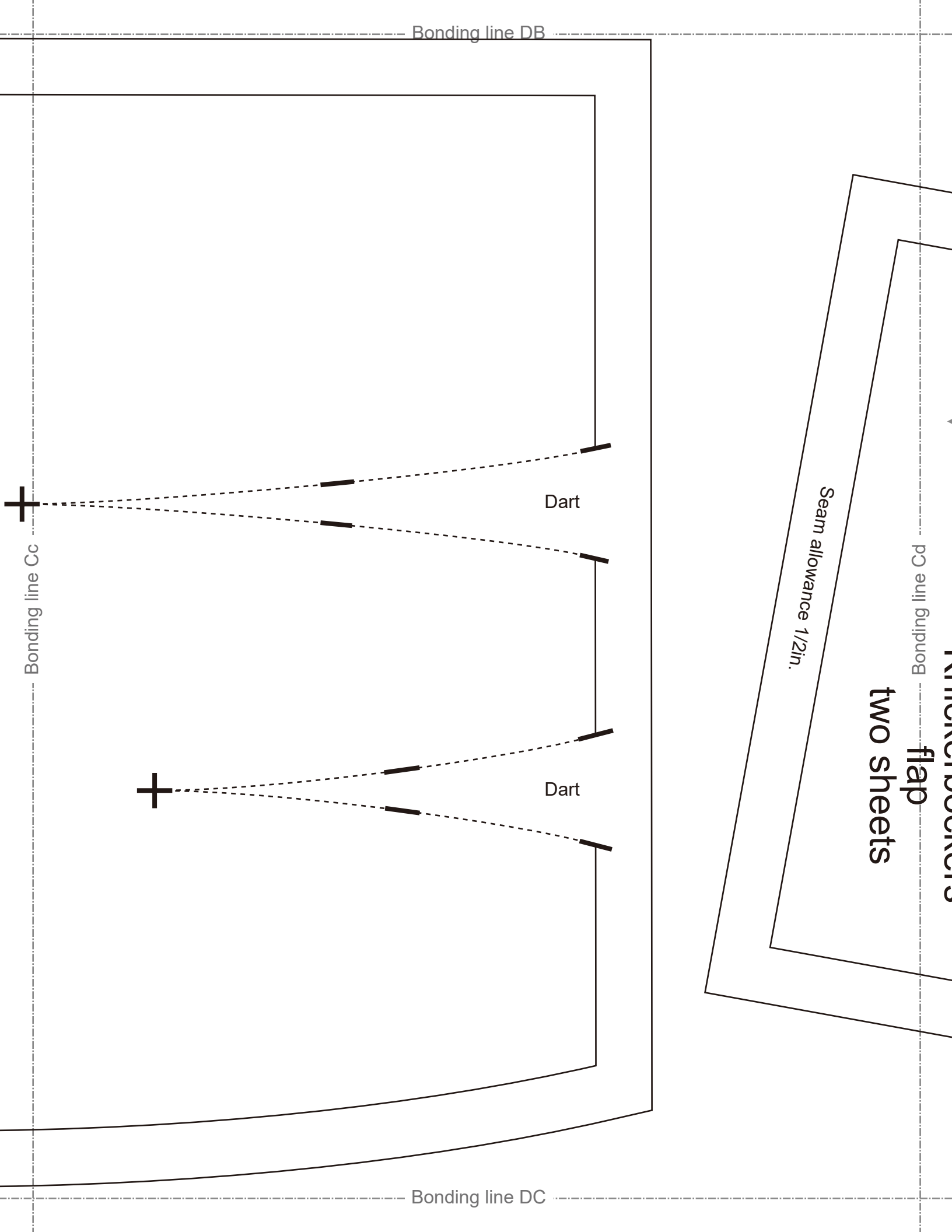
Dart

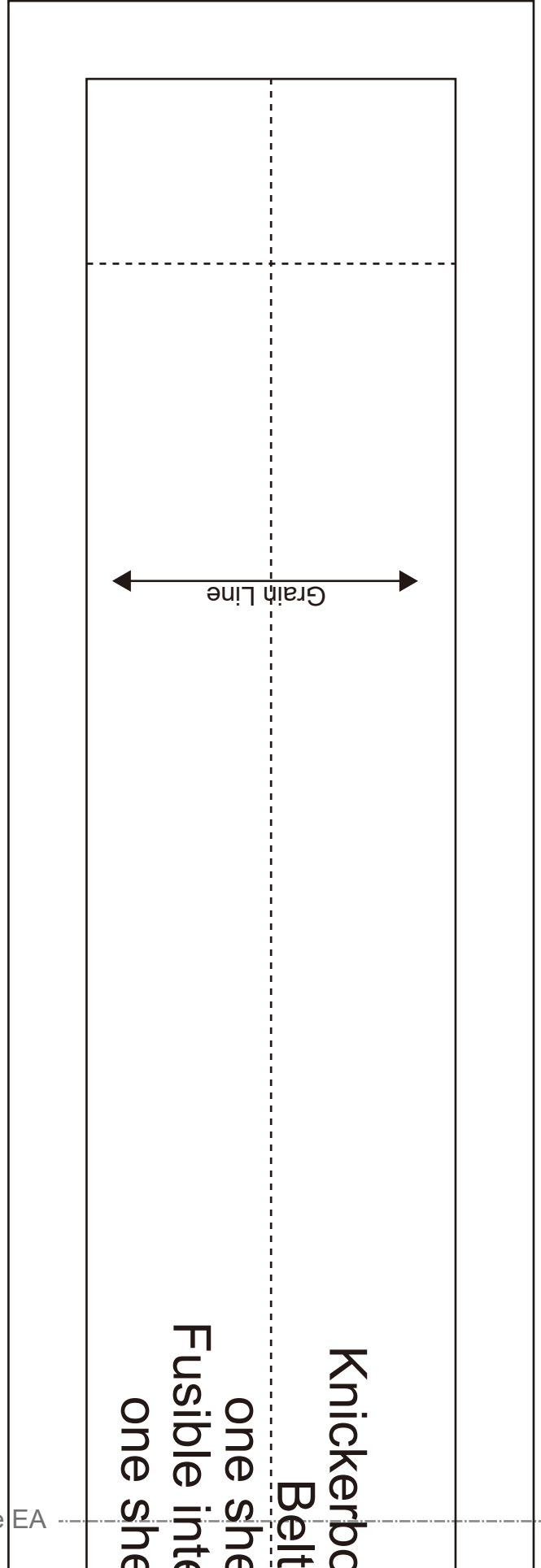
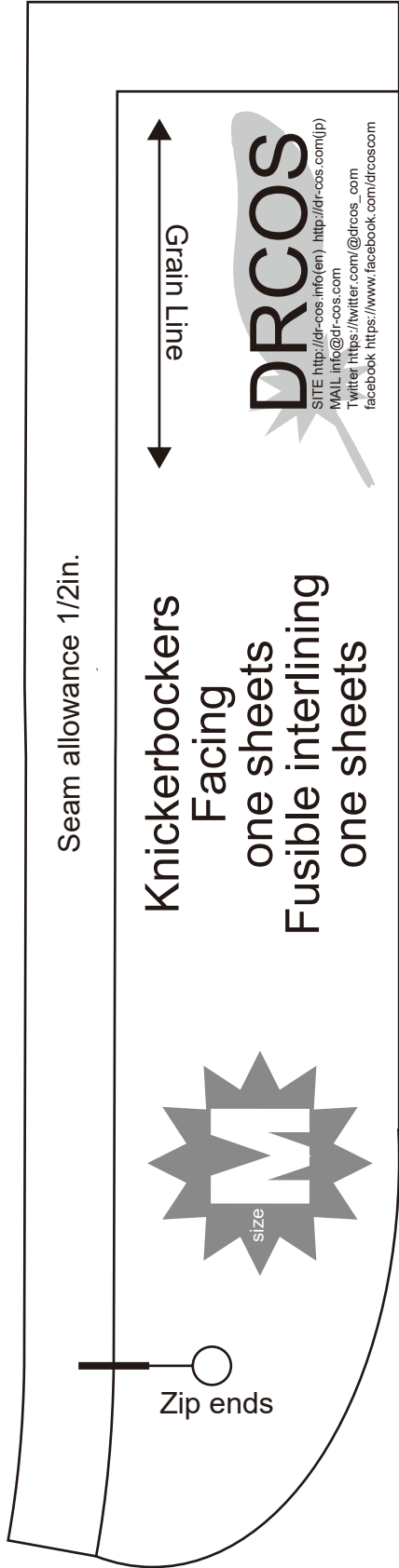
Bonding line DC

Bonding line Cd

flap
two sheets

Seam allowance 1/2in.





erbockers
Belt
e sheets
e interlining
e sheets

Seam allowance 1/2in.

Bonding line Be

LADIES'S
size

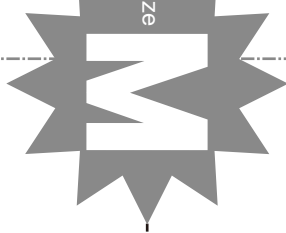
Bonding line EA

Bonding line EB

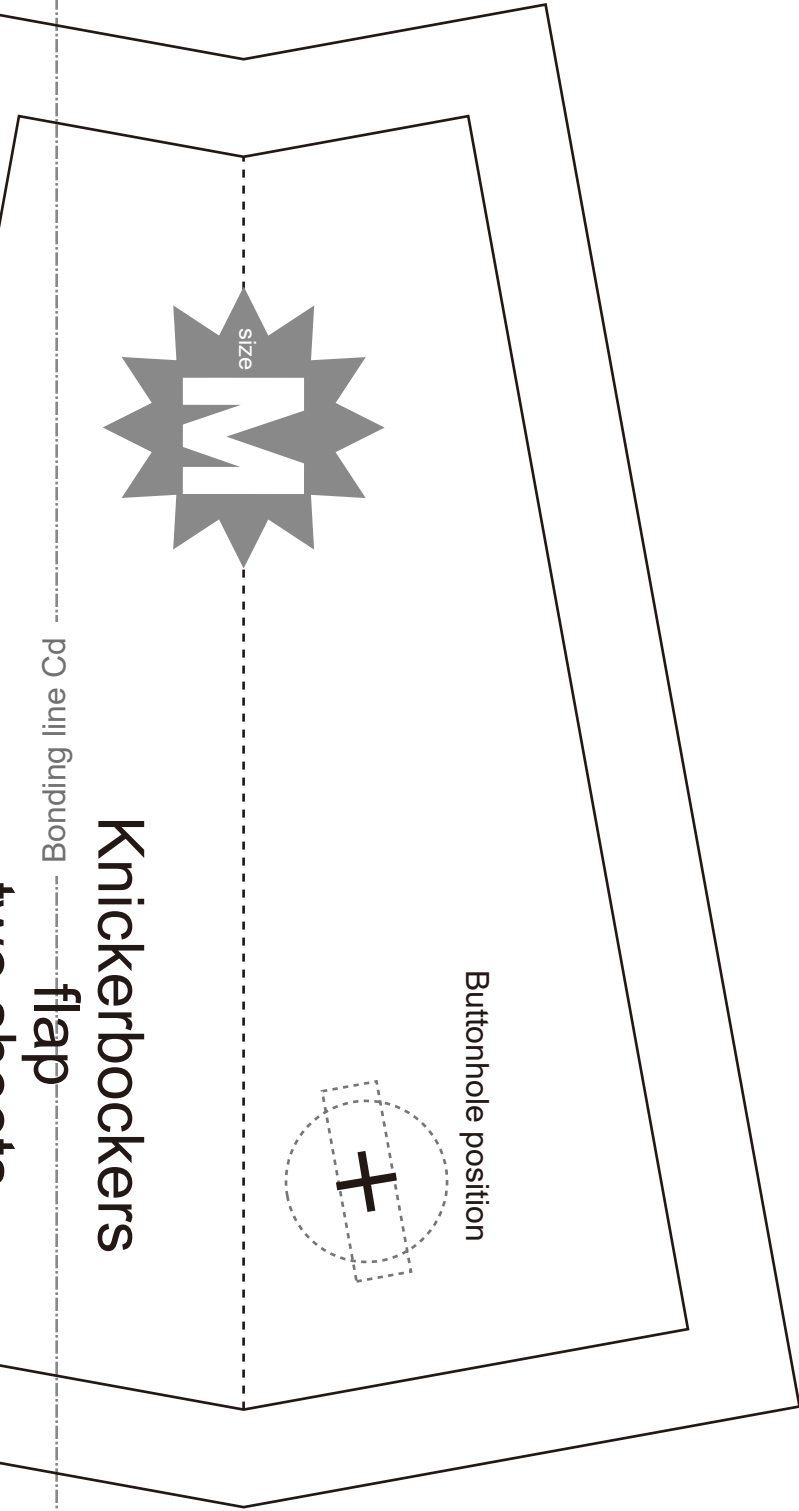
Knickerbockers
pocket
two sheets

Bonding line Bd

Bonding line EB



size



Bonding line Cd

Knickerbockers

flap

Buttonhole position

size

Bonding line EC



SITE <http://dr-cos.info/en> <http://dr-cos.com/tp>
MAIL info@dr-cos.com
Twitter <https://twitter.com/dr-cos>
facebook <https://www.facebook.com/drcoscom>

Bonding line Ce