

[Home](#)
[Back to Hoodie3 page](#)

LADIES'S M

SIZE

DRCOS
SITE <http://dr-cos.info/en/> <http://dr-cos.com/jp/>
MAIL info@dr-cos.com
Twitter <https://twitter.com/dr-cos>
facebook <https://www.facebook.com/drcoscom>

Bonding line AA

Bonding line Aa

Seam allowance 1/2in.

Hoodie3
Facing two sheets
Fusible interlining two sheets

Bonding line AA

Facing Line

Bonding line Ba

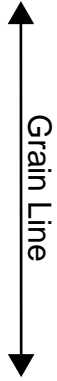
Bonding line AB

LADI

Ho

Ho
Fro
two

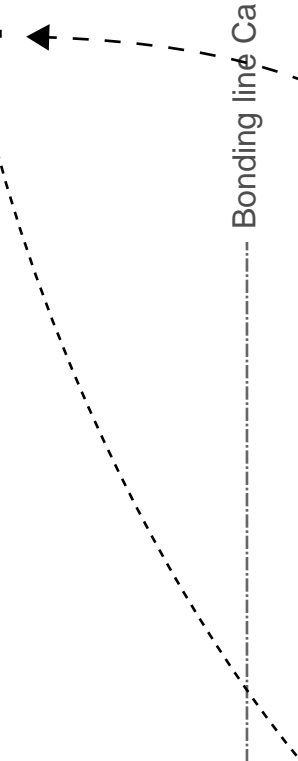
Bonding line AB



Bonding line Ca



Bonding line AC

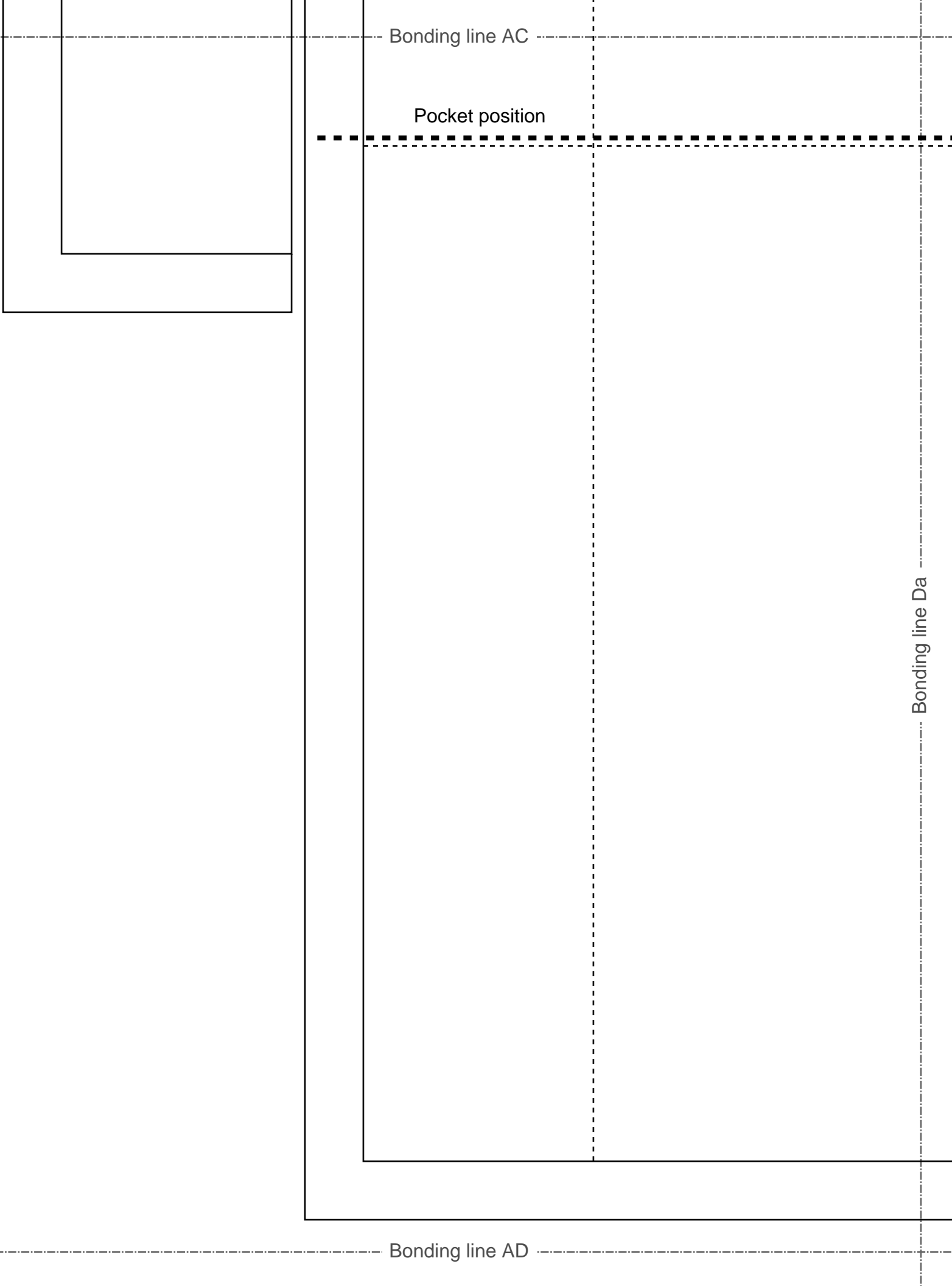


Bonding line AC

Pocket position

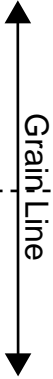
Bonding line Da

Bonding line AD



LADIES

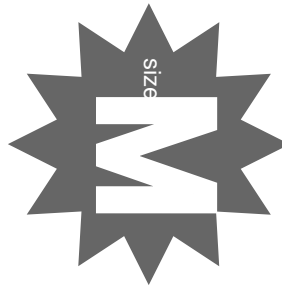
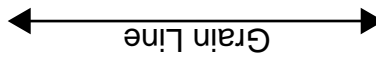
Hoodie
Hem r
two she



Bonding line Aa

Seam allowance

Bonding line ab



DRCOS

SITE [http://dr-cos.info\(en\)](http://dr-cos.info(en)) [http://dr-cos.com\(jp\)](http://dr-cos.com(jp))
MAIL info@dr-cos.com
Twitter https://twitter.com/drcos_com
facebook <https://www.facebook.com/drcoscom>

Bonding line

Fusible
F

Seam allc

DRCOS
SITE <http://dr-cos.info/en> <http://dr-cos.com/jp>
MAIL info@dr-cos.com
Twitter https://twitter.com/@drcos_com
facebook <https://www.facebook.com/drcoscom>

Bonding line

visible interlining one sheets
Facing one sheets
Hoodie3

seam allowance 1/2in.

DRCOS
SITE <http://dr-cos.info/en> <http://dr-cos.com/jp>
MAIL info@dr-cos.com
Twitter https://twitter.com/@drcos_com
facebook <https://www.facebook.com/drcoscom>

Bonding line Ba

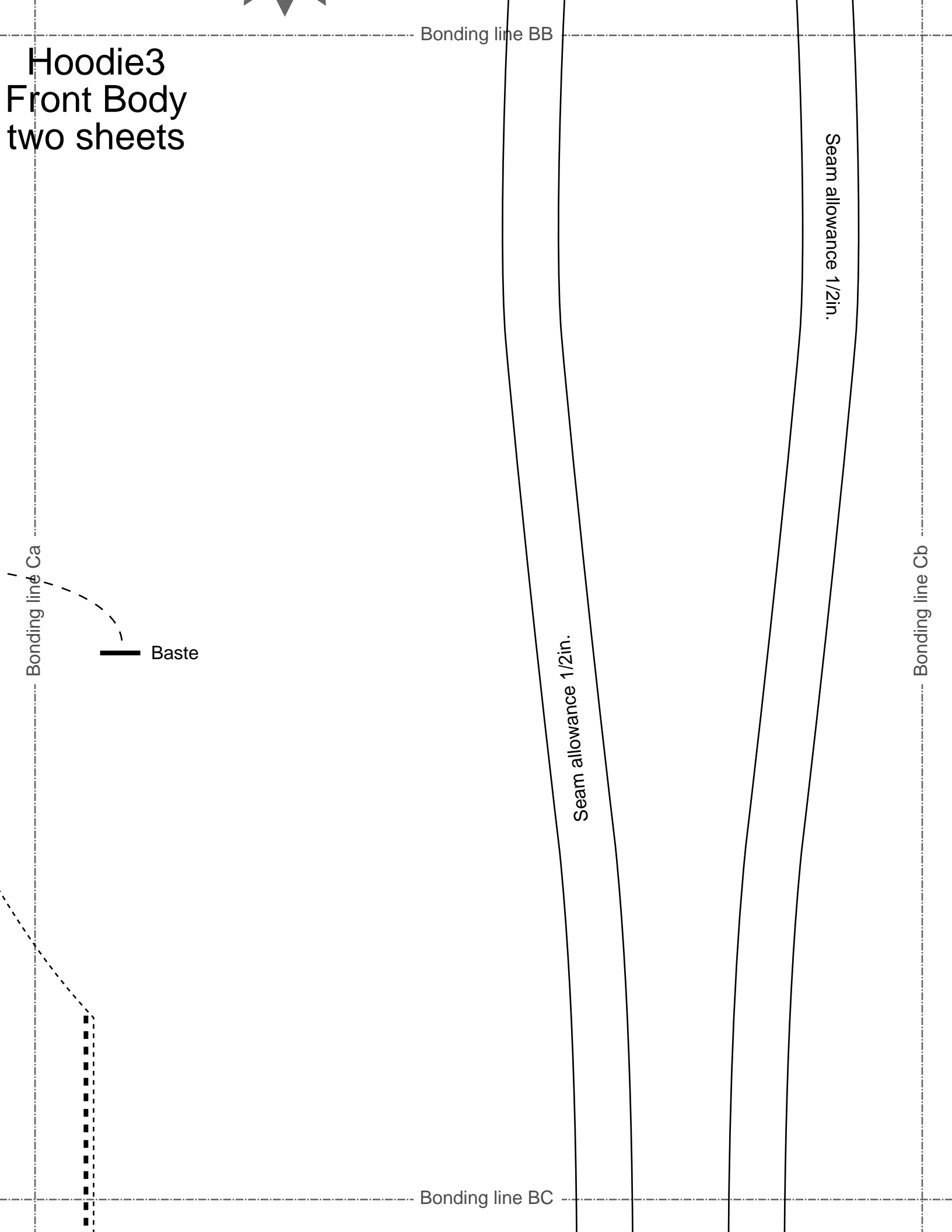
Bonding line Bb

DIES'S size **M**

Bonding line BB

Hoodie3

Hoodie3 Front Body two sheets



Bonding line BC

Bonding line Da

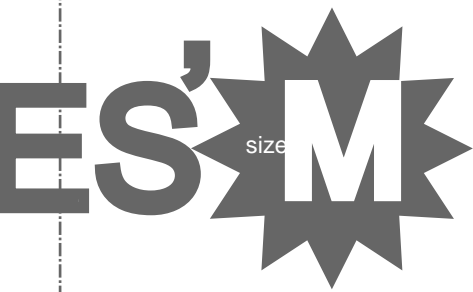


Bonding line Db

Bonding line BD

DF

SITE <http://d...>
MAIL info@...
Twitter <https://...>
facebook <http://...>



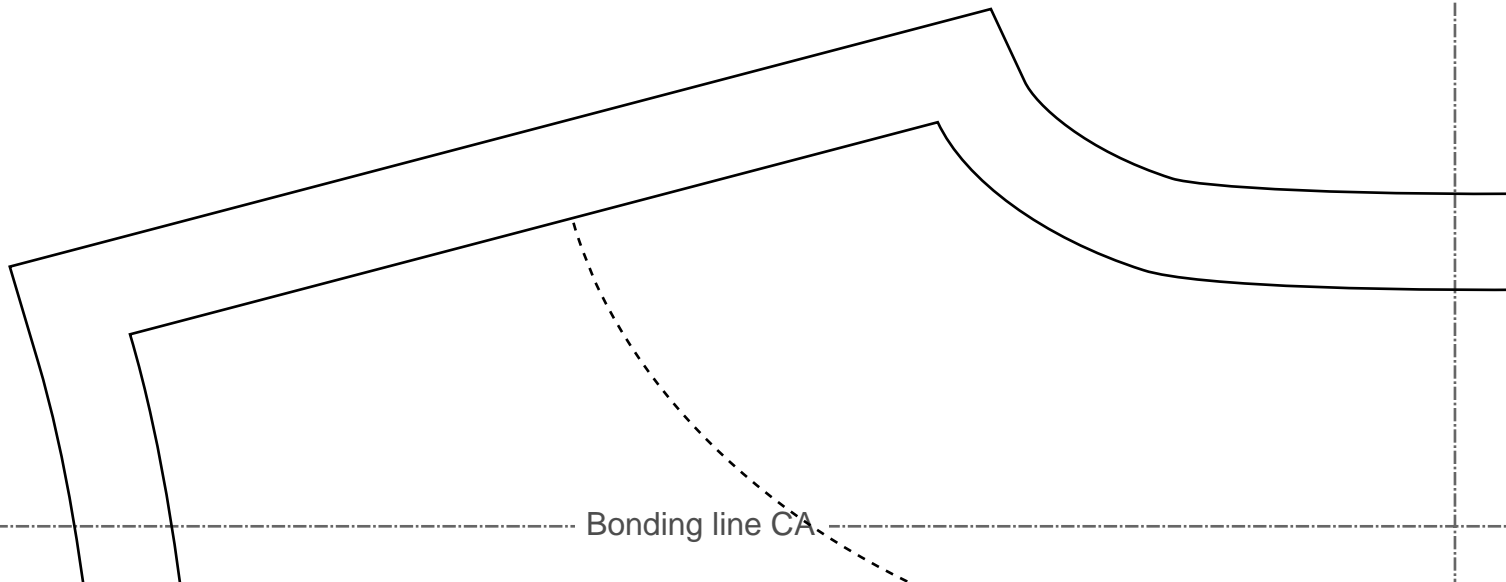
odie3
em rib
sheets



allowance 1/2in.

Bonding line Ab

Bonding line Ac



Bonding line CA

Bonding line CA

Facing Line

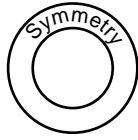
Bonding line Bb

Bonding line Bc

LADIES' size M

Bonding line CB

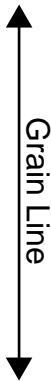
Bonding line CB



Hoodie3 Back Body one sheets

Bonding line Cb

Bonding line Cc



Bonding line CC

Bonding line CC

Bonding line Db

Bonding line Dc

DRCOS

SITE <http://dr-cos.info/en> <http://dr-cos.com/jp>
MAIL info@dr-cos.com
Twitter https://twitter.com/drcos_com
facebook <https://www.facebook.com/drcoscom>

Bonding line CD

RCOS

rcos.info(en) http://dr-cos.com(jp)
dr-cos.com
/twitter.com/@drcos_com
ps://www.facebook.com/drcoscom

Bonding line Ac

Front

DR

SITE <http://dr-cos.com>
MAIL info@dr-cos.com
Twitter https://twitter.com/drcos_com
facebook <https://www.facebook.com/drcoscom>

Bonding line Ad

Bonding line DA

LADII

Bonding line DA

ing Line

Hood
Slee
two sh

Bonding line Bc

Bonding line Bd

Bonding line DB

Bonding line DB

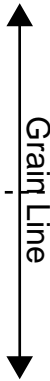
Seam allo

Bonding line Cc



Bonding line Cd

LADIE

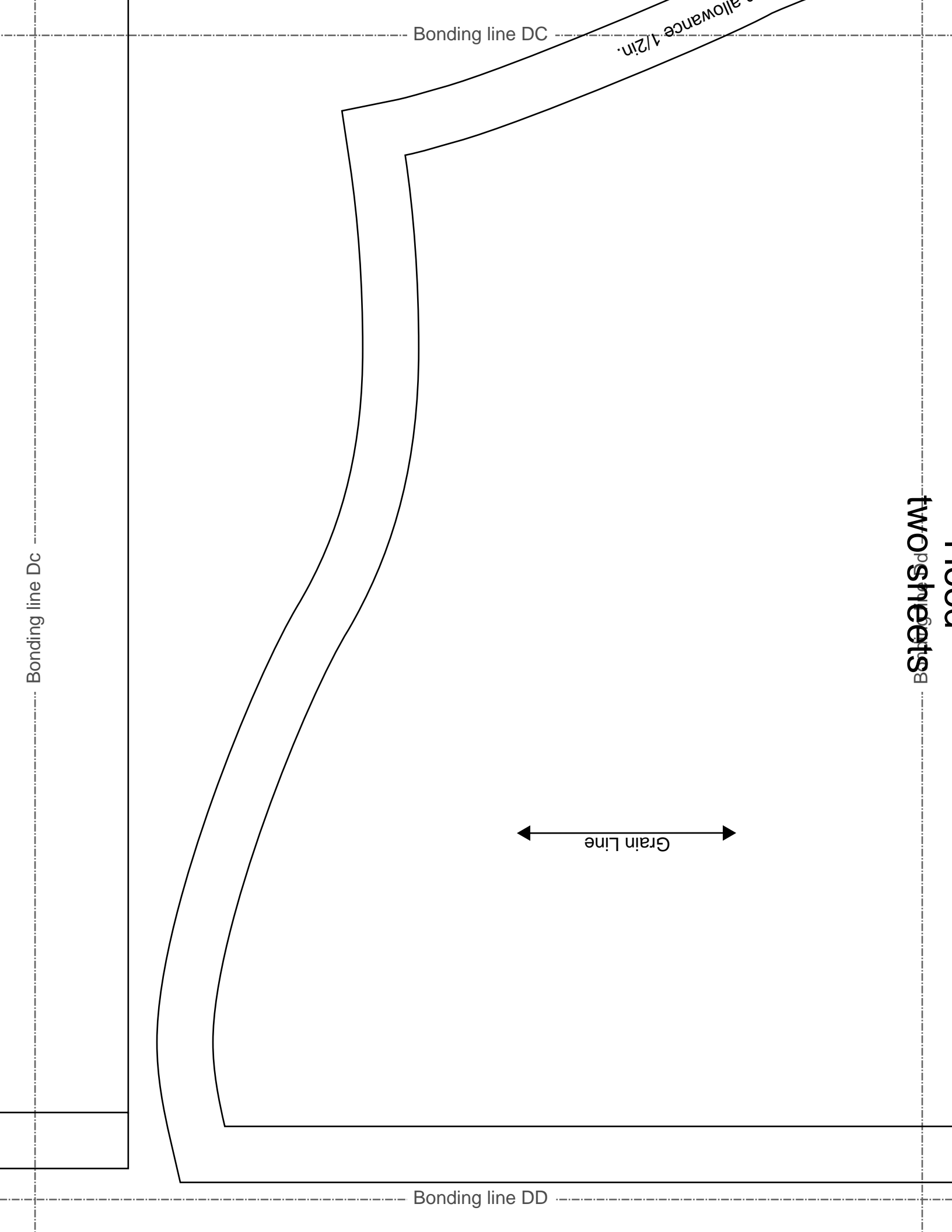


Hoodie3
Cuffs rib
two shee

Seam allowan

Bonding line DC

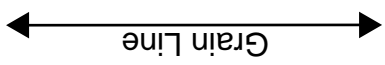
Seam allowance 1/2in.



Bonding line Dc

Bonding line DC

allowance 1/2 in.



Bonding line DD

two sheets

DRCOS

SITE [http://dr-cos.info\(en\)](http://dr-cos.info(en)) [http://dr-cos.com\(jp\)](http://dr-cos.com(jp))
MAIL info@dr-cos.com
Twitter https://twitter.com/drcos_com
facebook <https://www.facebook.com/drcoscom>

Bonding line Ad

Bonding line Ae

Back

DIES' M

size

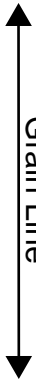
Bonding line EA



Bonding line EA

Hoodie3
Sleeve
1/0 sheets

Bonding line Bd



Grain Line

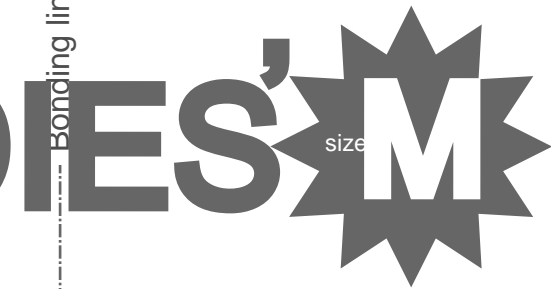
Bonding line Be

Bonding line EB

Bonding line EB

eam allowance 1/2in.

Bonding line Cd



die3
s rib
heets



allowance 1/2in.

Bonding line Ce

Bonding line EC

Bonding line EC

Bonding line De

Bonding line ED

LADIES' M

size

Hoodies
Hood

two sheets

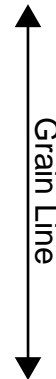


Bonding line Ae

Bonding line Af



Hoodie3 Pocket two sheets



Seam allowance 1/2in.

Bonding line FA