

LADIES' ^{size} **IT**

DRCOS

SITE: <http://drcos.info/easy> <http://drcos.com/lp>
MAIL: info@drcos.com
Twitter: <https://twitter.com/drcos>
facebook: <https://www.facebook.com/drcos.com>

Facing Line

Bonding line AA

Bonding line Aa

Seam allowance 1/2in

Hoodie3
Facing two sheets
interlining two sheets

Bonding line AB

Bonding line AA

Bonding line Ba

LAD

F
t

Thickness 1/2in.

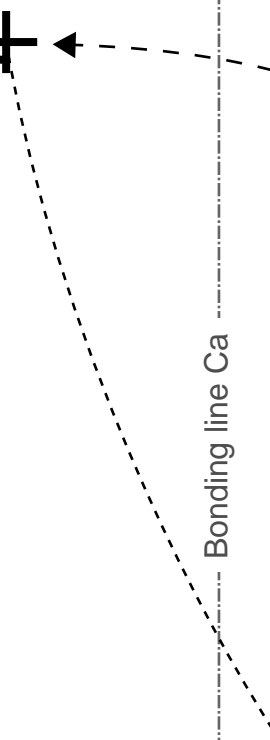
Facing
Fusible inter-



Bonding line AB



Bonding line Ca



Pocket position

Bonding line AC

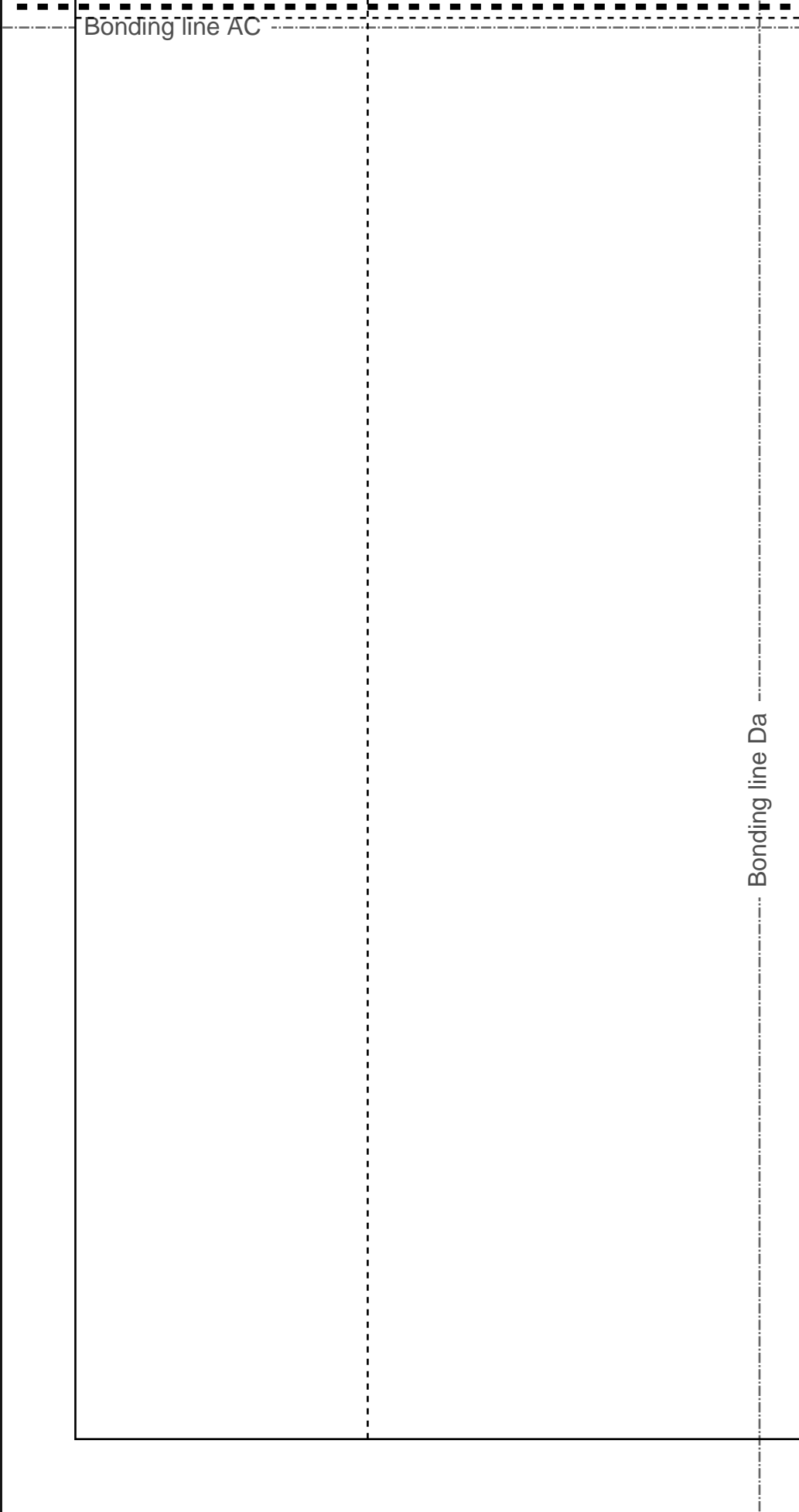
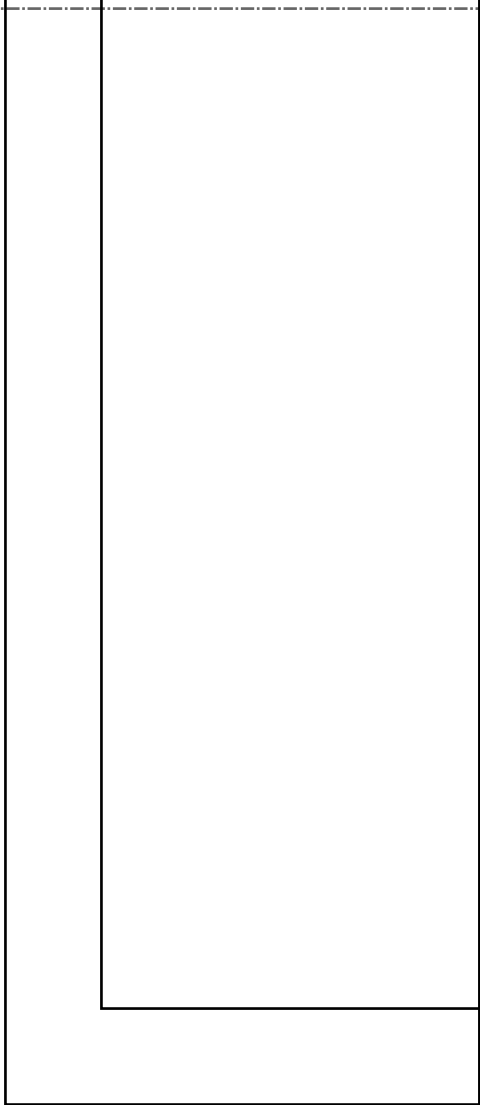


Pocket position

Bonding line AC

Bonding line Da

Bonding line AD



LADIES' size

GrainLine

Hoodie3
Cuffs rib
two sheets

Seam allowance 1/2in.

DRCOS

SITE [http://dr-cos.info\(en\)](http://dr-cos.info(en)) [http://dr-cos.com\(jp\)](http://dr-cos.com(jp))
MAIL info@dr-cos.com
Twitter https://twitter.com/@drcos_com
facebook <https://www.facebook.com/drcoscom>

Bonding line Aa

Bonding line Ab

Bonding line BA

Bonding line BA

Bonding line Ba

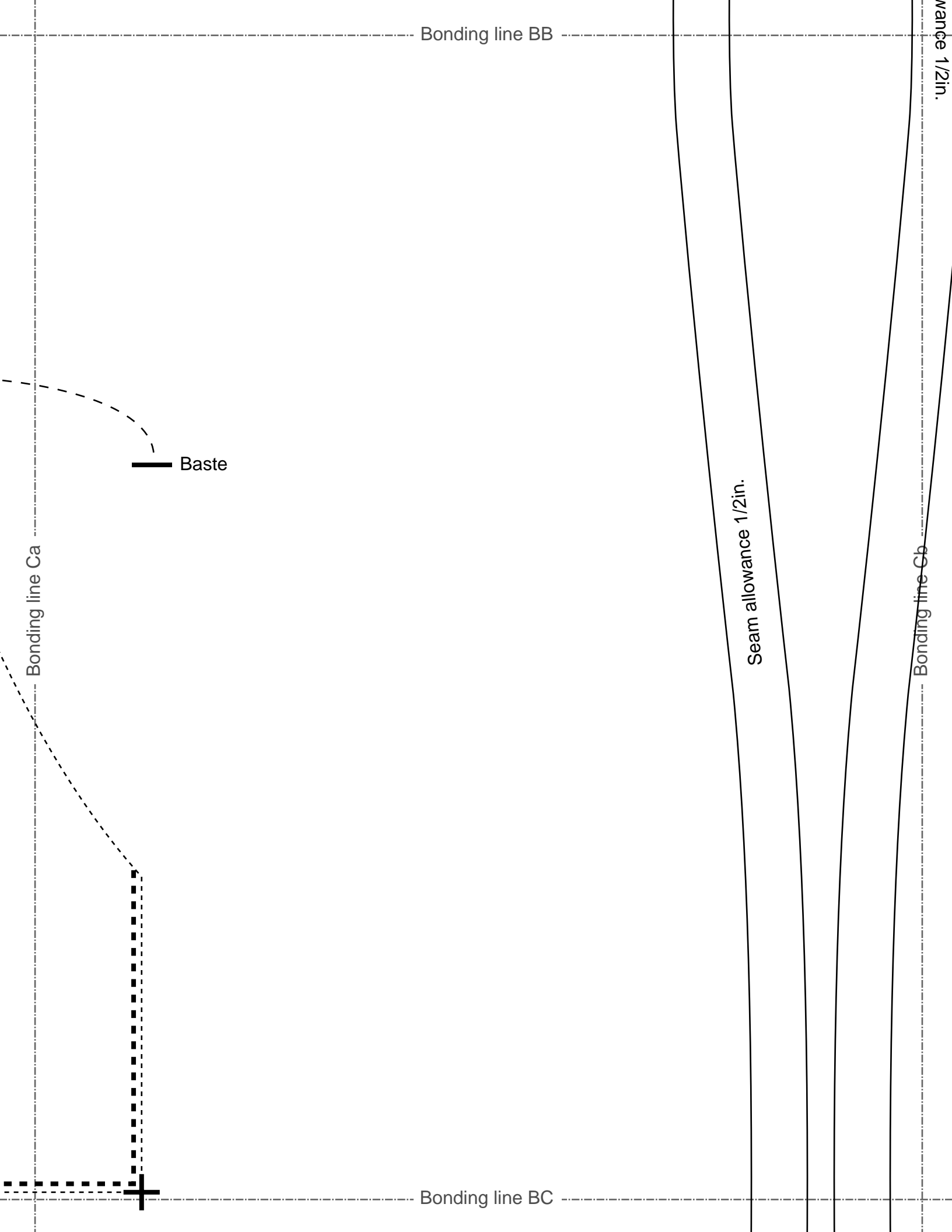
Bonding line Bb

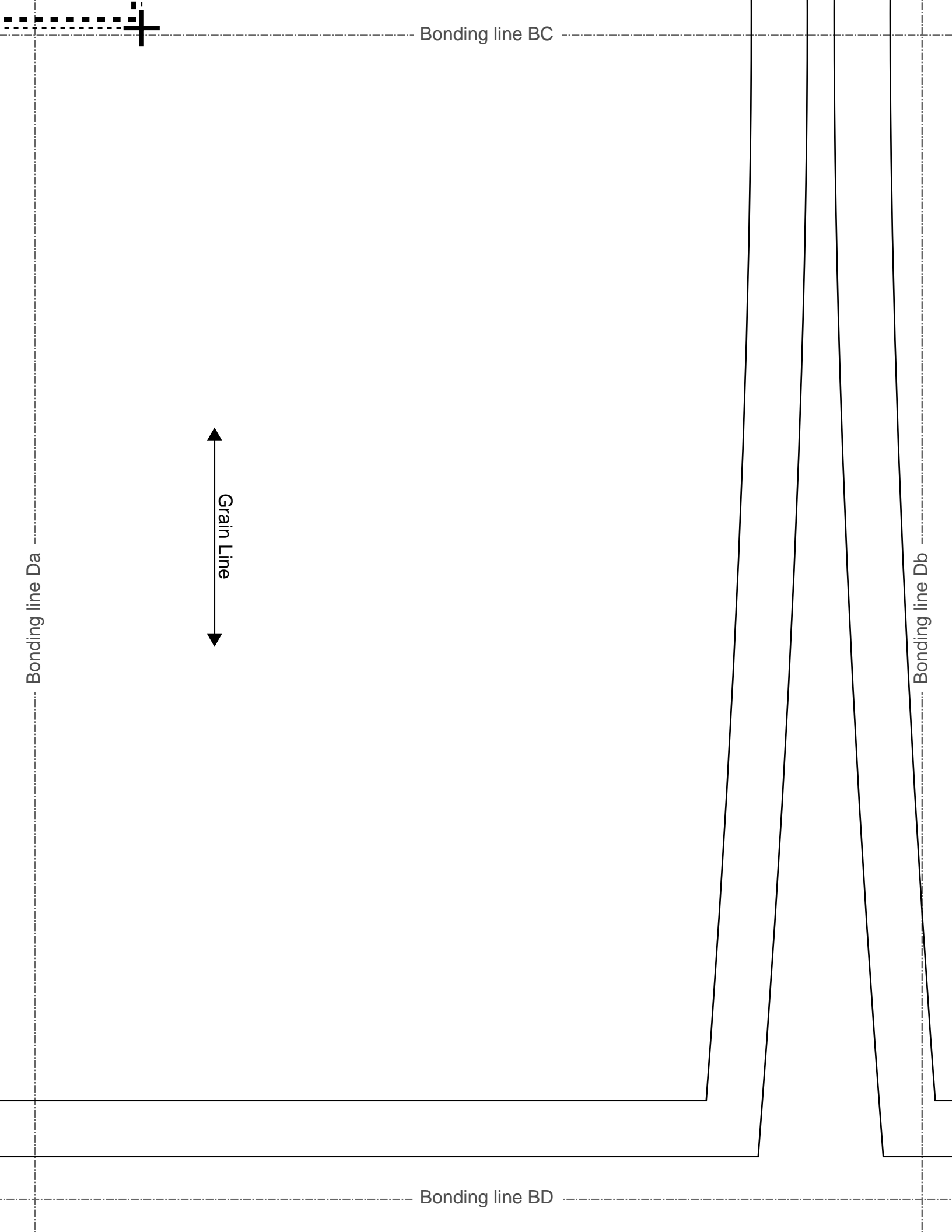
ADIES'LL size

Hoodie3
Front Body
two sheets

Bonding line BB

Seam allowance 1





Bonding line BC

Bonding line Da

Grain Line

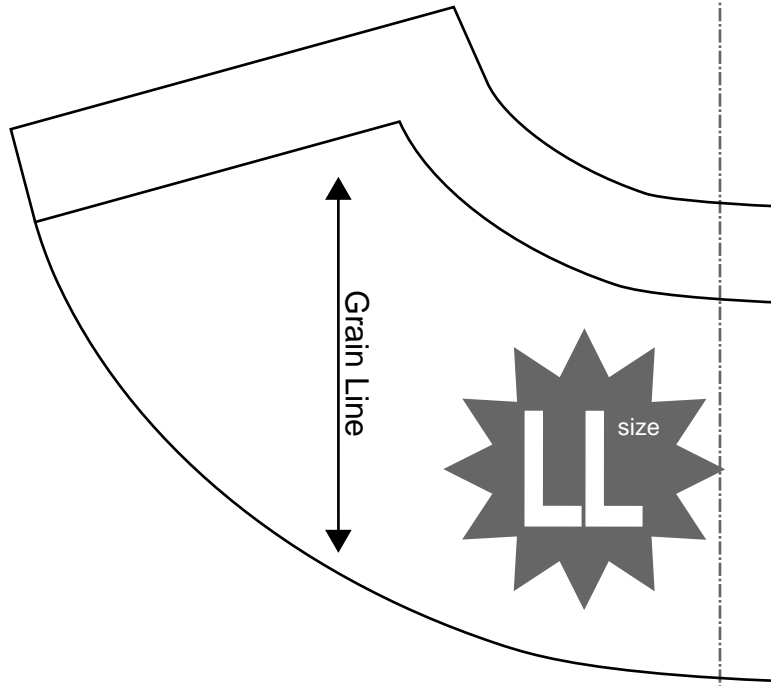
Bonding line BD

Bonding line Db



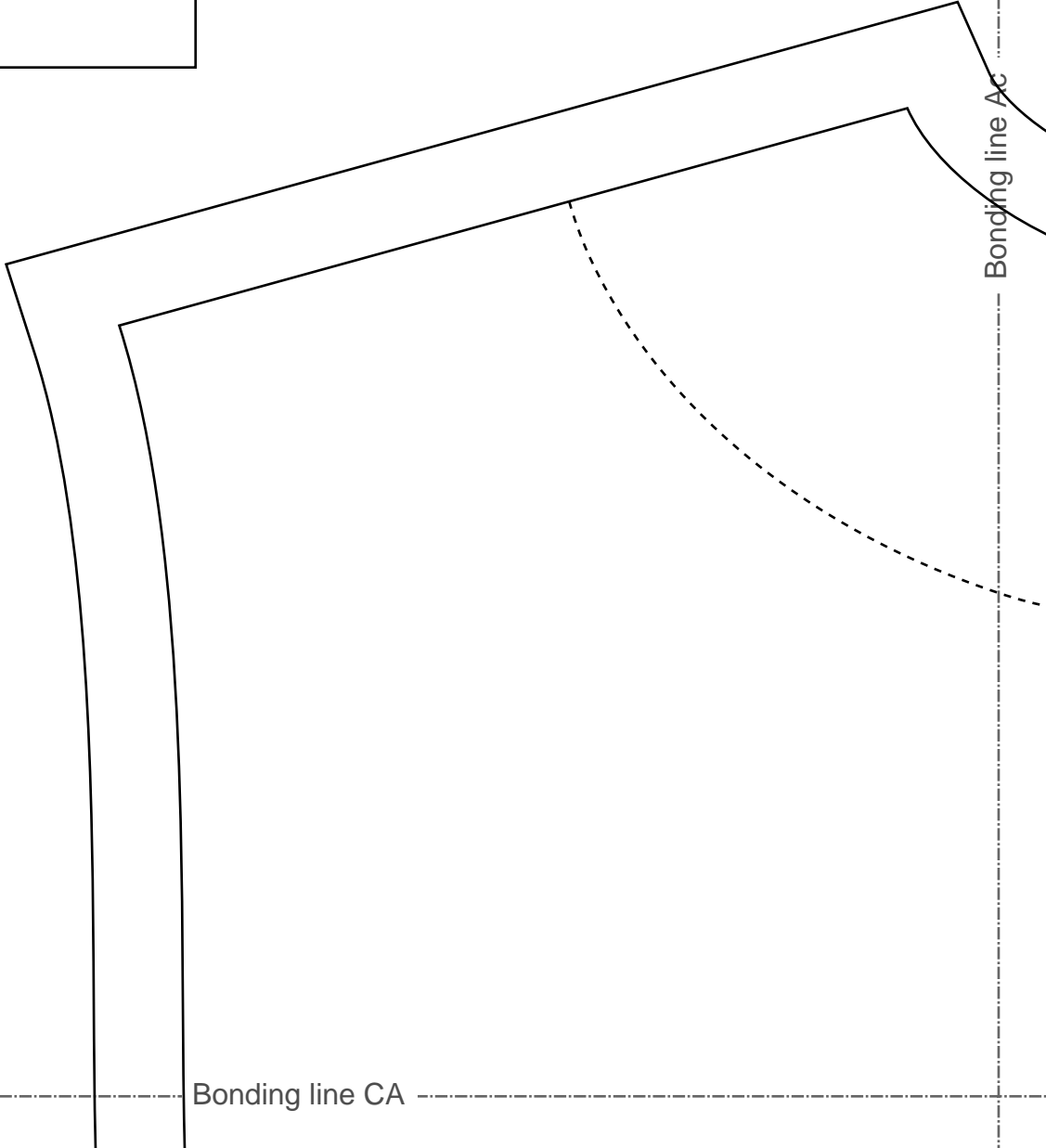
DRCOS

SITE <http://dr-cos.info/en> <http://dr-cos.com/jp>
MAIL info@dr-cos.com
Twitter https://twitter.com/drcos_com
facebook <https://www.facebook.com/drcoscom>



Bonding line Ab

Bonding line Ac



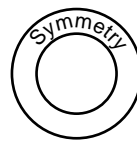
Bonding line CA

Bonding line CA

Bonding line Bb

Bonding line Bc

LADIES' **LL** size



Hoodie3
Back Body
one sheets

Bonding line CB

Seam allowance 1

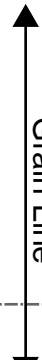
Bonding line CB

Bonding line CC

Bonding line Cb

Bonding line Cc

variance 1/2in.



Grain Line

Bonding line CC



Bonding line Db

Bonding line Dc

DRCOS

SITE [http://dr-cos.info\(en\)](http://dr-cos.info(en)) [http://dr-cos.com\(jp\)](http://dr-cos.com(jp))
MAIL info@dr-cos.com
Twitter [@drcos_com](https://twitter.com/@drcos_com)
facebook <https://www.facebook.com/drcoscom>

Bonding line CD

Seam allowance 1/2in.

Hoodie3

Facing one sheets
Fusible interlining one sheets

DRCOS
SITE: <http://dr-cos.info/en> <http://dr-cos.com/jp>
MAIL: info@dr-cos.com
Twitter: <https://twitter.com/dr-cos>
facebook: <https://www.facebook.com/drcos.com>

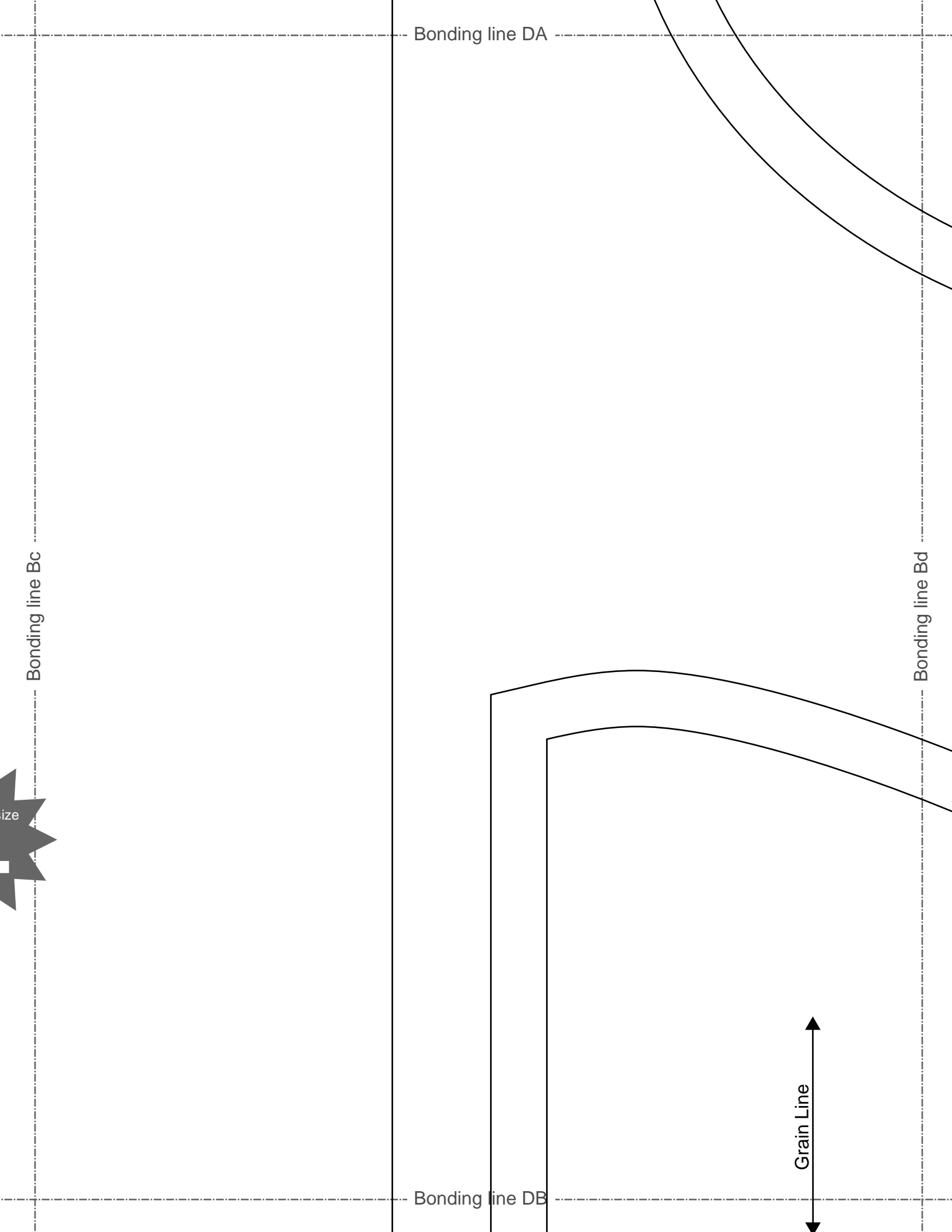
Bonding line AC

Facing Line

Bonding line Ad

DRCOS
SITE: <http://dr-cos.info/en> <http://dr-cos.com/jp>
MAIL: info@dr-cos.com
Twitter: <https://twitter.com/dr-cos>
facebook: <https://www.facebook.com/drcos.com>

Bonding line DA



Bonding line Cc

Bonding line DB



Bonding line Cd



DRCOS
 SITE [http://dr-cos.info\(en\)](http://dr-cos.info/en) [http://dr-cos.com\(jp\)](http://dr-cos.com/jp)
 MAIL info@dr-cos.com
 Twitter <https://twitter.com/dr-cos>
 facebook <https://www.facebook.com/drcoscom>

Bonding line DC

Bonding line DC

Bonding line Dc

Bonding line Dd

Bonding line DD

Bonding line Ad

Back

Bonding line EA

Bonding line Ae



Bonding line EA

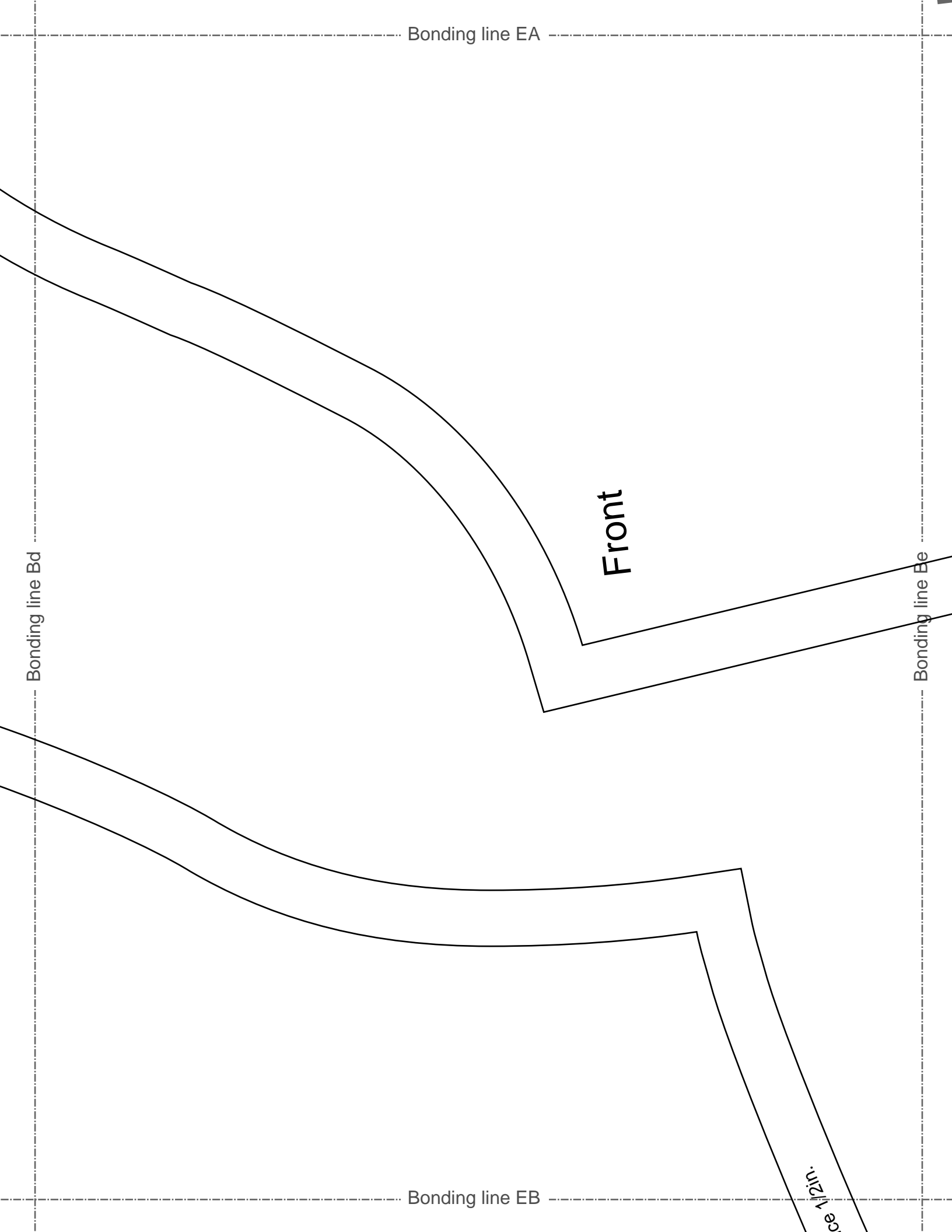
Bonding line Bd

Front

Bonding line Be

Bonding line EB

ce 1/2in.



Bonding line EB

Seam allowance 1/2 in.

Hoodies
Hood
two sheets

LADIES **IT**
size

Bonding line Cd

Bonding line Ce

Bonding line EC

LADIES ^{size} 3

Hoodie3
Sleeve
two sheets



Bonding line Ae

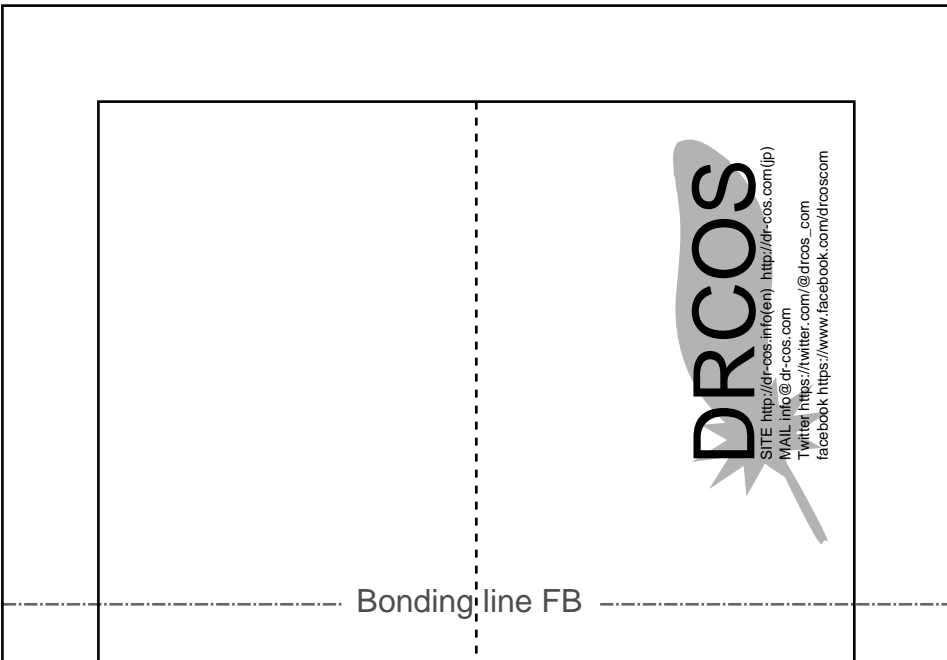
Bonding line Af

Bonding line FA

Bonding line FA

Bonding line Be

Bonding line Bf



Bonding line FB

Bonding line Ce

Bonding line FB

LADIES'  **size**

Bonding line FC

**Hoodie3
Hem rib
two sheets**

Seam allowance 1/2in.

Bonding line Cf

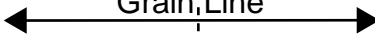


Bonding line FC

Bonding line De

Bonding line Df

Grain Line



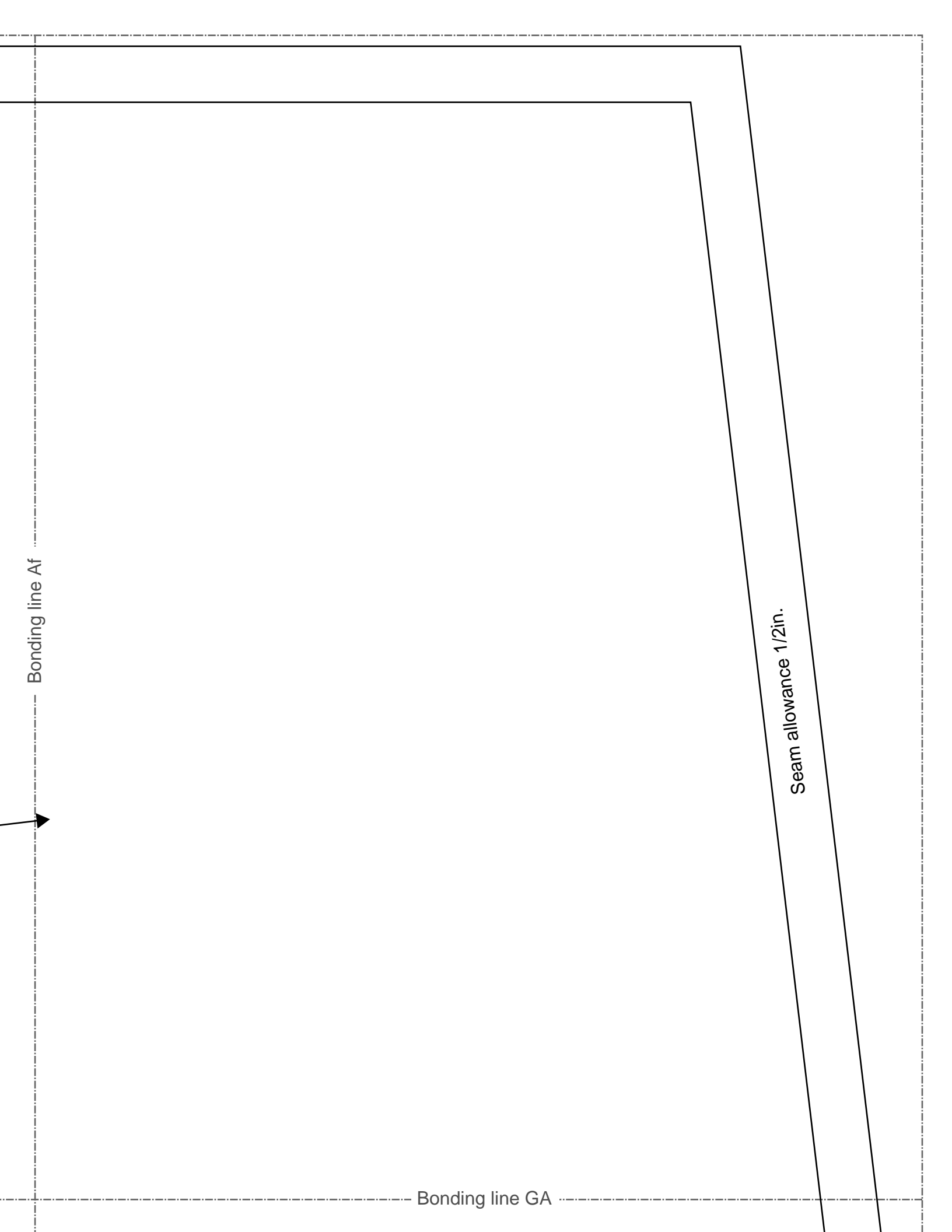
Bonding line FD

Bonding line Af



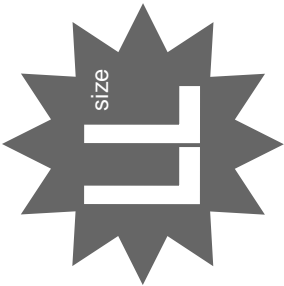
Bonding line GA

Seam allowance 1/2in.



Bonding line GA

Bonding line Bf



Hoodie3 Pocket two sheets

Grain Line



SITE <http://dr-cos.info/en> <http://dr-cos.com/jp>
MAIL info@dr-cos.com
Twitter [@drcos_com](https://twitter.com/@drcos_com)
facebook <https://www.facebook.com/drcoscom>

Seam allowance 1/2in.

Bonding line GB