

size  
**Children's 10**

**DRCOS**  
SITE <http://drcos.info/en/> <http://drcos.com/ip/>  
MAIL [info@drcos.com](mailto:info@drcos.com)  
Twitter <https://twitter.com/drcos>  
facebook <https://www.facebook.com/drcos.com>

Facing Line

Bonding-line Aa

Bonding line AA

SITE  
MAIL  
Twitt  
facet

Bonding line AA

# Children

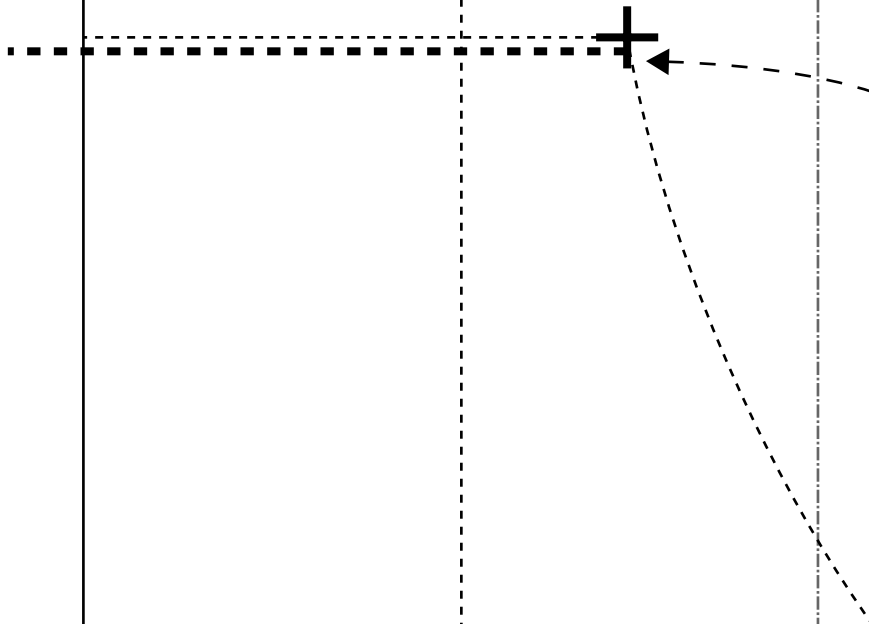
Hoodie3  
Front Bo  
two shee

Bonding line Ba

Seam allowance 1/2in.

Hoodie3  
Facing two sheets  
Fusible interlining two sheets

Bonding line AB



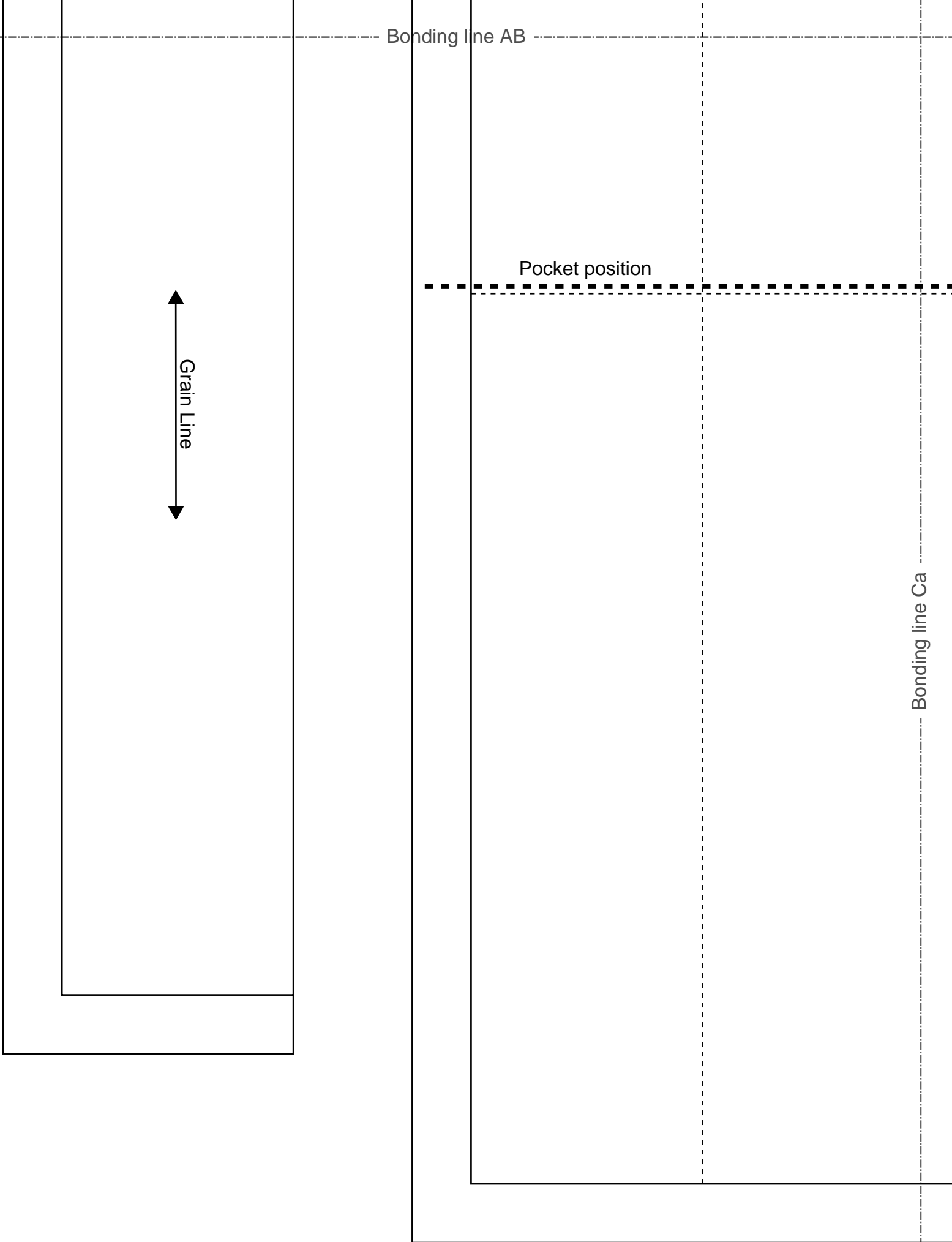
Bonding line AB

Pocket position

Grain Line

Bonding line Ca

Bonding line AC



Bonding line Aa

# DRCOS

SITE [http://dr-cos.info\(en\)](http://dr-cos.info(en)) [http://dr-cos.com\(jp\)](http://dr-cos.com(jp))  
MAIL [info@dr-cos.com](mailto:info@dr-cos.com)  
Twitter [https://twitter.com/@drcos\\_com](https://twitter.com/@drcos_com)  
facebook <https://www.facebook.com/drcoscom>

Grain Line



Hoodie3  
Facing one sheets  
Fusible interlining one sheets

Seam allowance 1/2in.



SITE [http://dr-cos.info\(en\)](http://dr-cos.info(en)) [http://dr-cos.com\(jp\)](http://dr-cos.com(jp))  
MAIL [info@dr-cos.com](mailto:info@dr-cos.com)  
Twitter [https://twitter.com/@drcos\\_com](https://twitter.com/@drcos_com)  
facebook <https://www.facebook.com/drcoscom>

Bonding line Ab

Bonding line BA

en's **10**  
size

Body3  
t Body  
sheets

Bonding line Ba

Bonding line BA

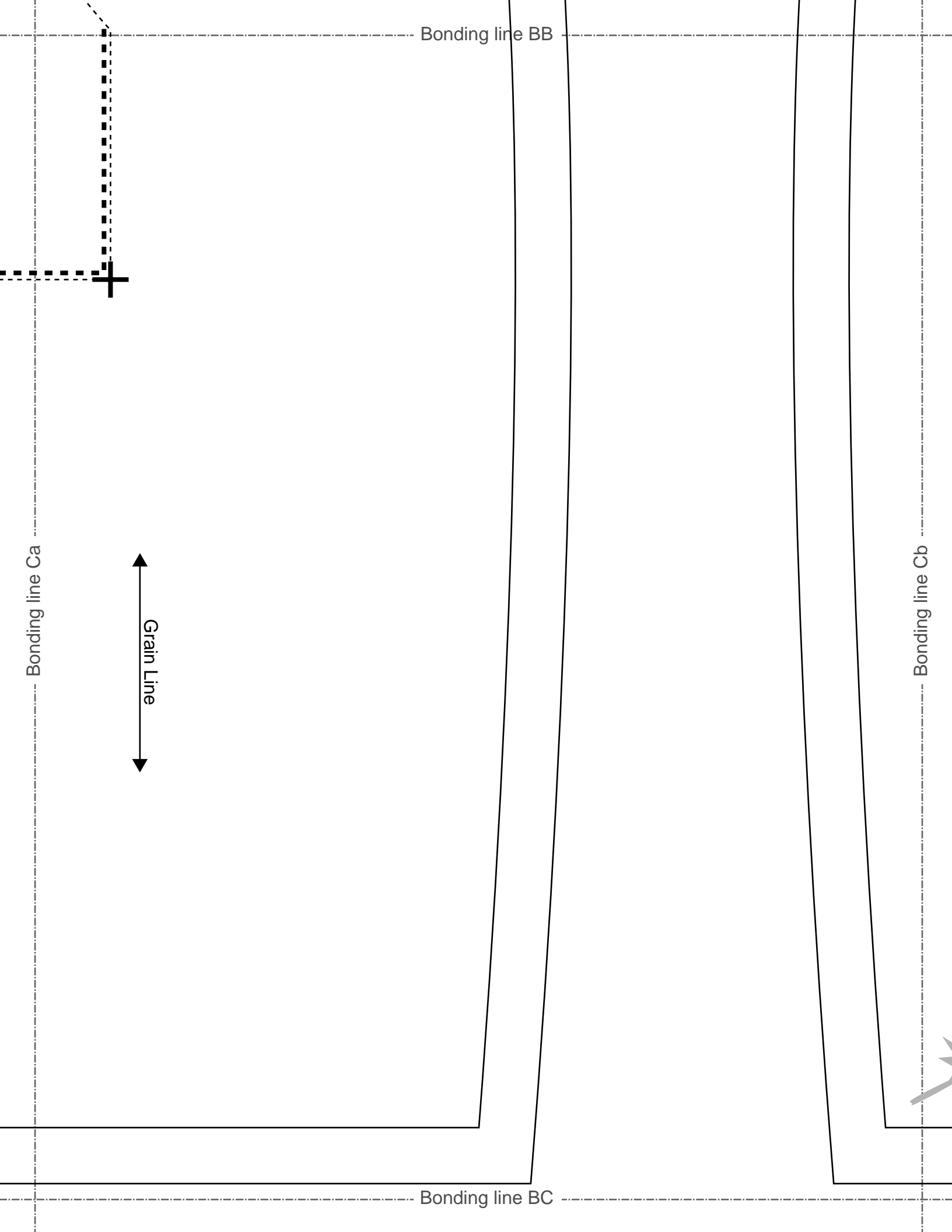
Seam allowance 1/2in.

Bonding line Bb

 Baste

Seam allowance 1/2in.

Bonding line BB

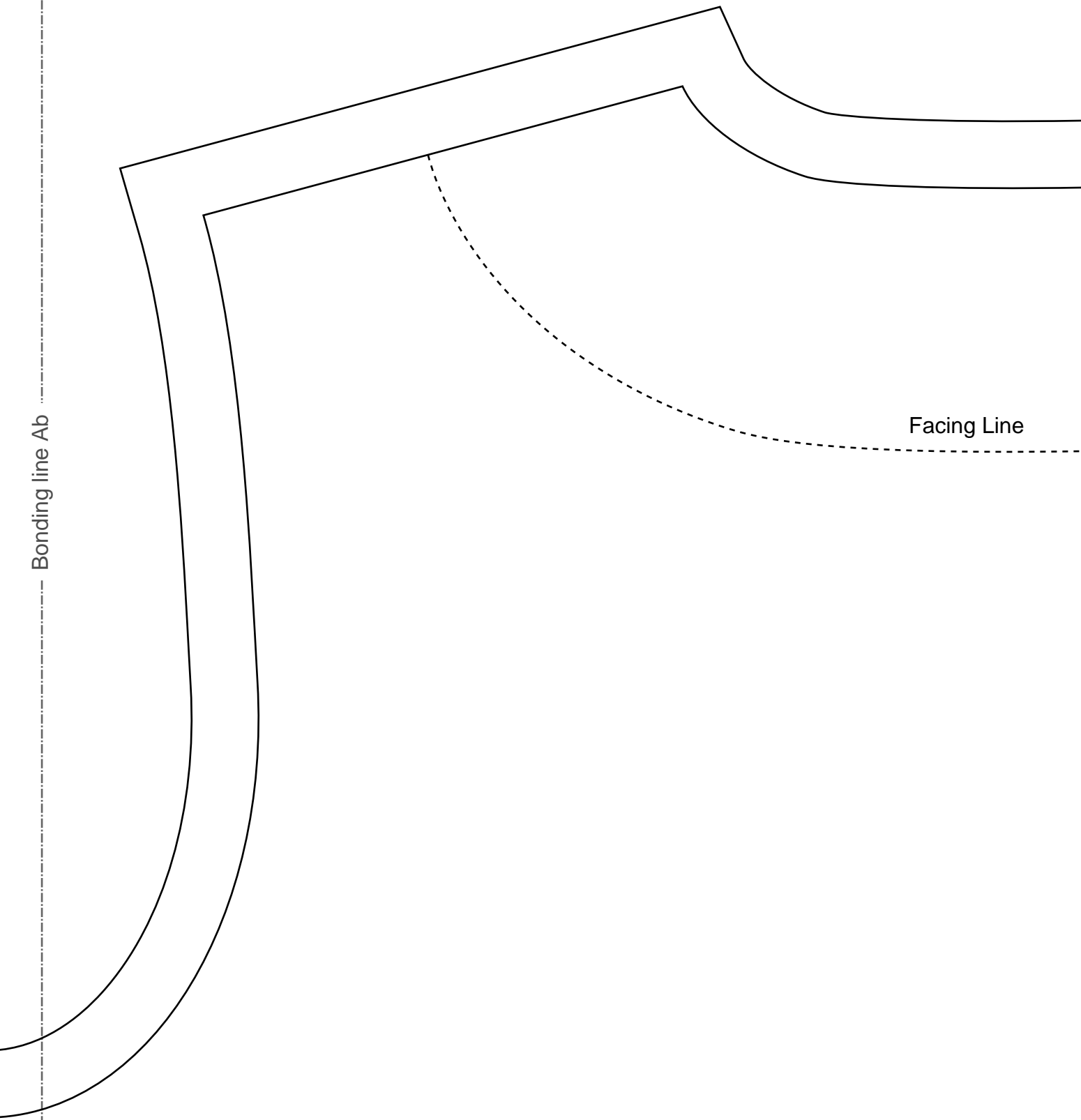


Bonding line Ab

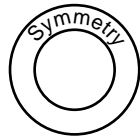
Bonding line Ac

Bonding line CA

Facing Line



# Children's <sup>size</sup> 10



Hoodie3  
Back Body  
one sheets





Bonding line CB

Grain Line



Bonding line Cb

Bonding line Cc

**DRCOS**

SITE <http://dr-cos.info/en> <http://dr-cos.com/jp>

MAIL [info@dr-cos.com](mailto:info@dr-cos.com)

Twitter [https://twitter.com/drcos\\_com](https://twitter.com/drcos_com)

facebook <https://www.facebook.com/drcoscom>

Bonding line CC

**DRCOS**

SITE [http://dr-cos.info\(en\)](http://dr-cos.info(en)) [http://dr-cos.com\(jp\)](http://dr-cos.com(jp))  
MAIL [info@dr-cos.com](mailto:info@dr-cos.com)  
Twitter [https://twitter.com/drcos\\_com](https://twitter.com/drcos_com)  
facebook <https://www.facebook.com/drcoscom>

Front

Children's <sup>size</sup> 10

Hoodie3  
Sleeve  
two sheets

Bonding line Ac

Bonding line Ad

Bonding line DA

Bonding line DA

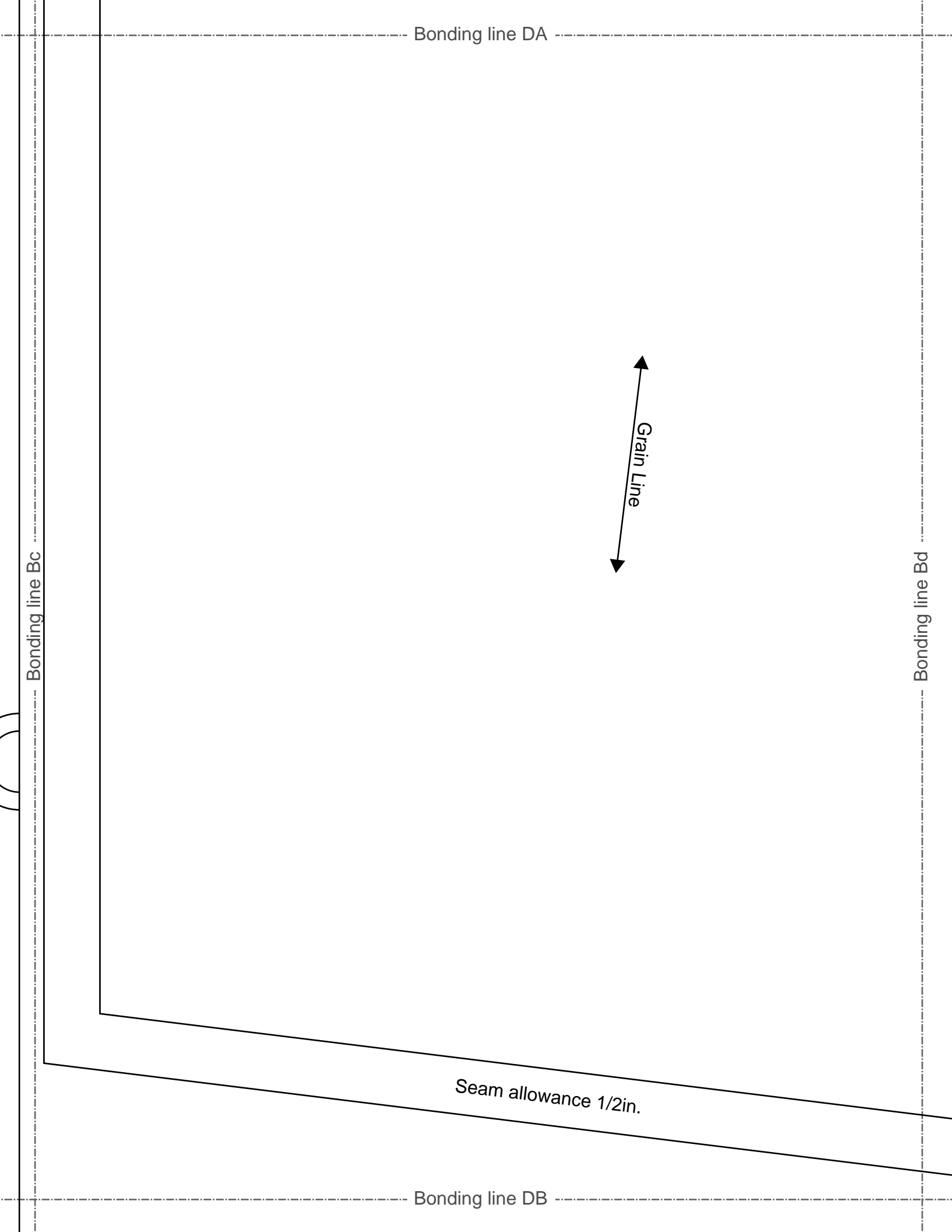
Bonding line Bc

Bonding line Bd

Grain Line

Seam allowance 1/2in.

Bonding line DB



Hoodie3  
Pocket  
two sheets

**DRCOS**

SITE <http://dr-cos.info/en/> <http://dr-cos.com/jp/>  
MAIL [info@dr-cos.com](mailto:info@dr-cos.com)  
Twitter [@drcos\\_com](https://twitter.com/@drcos_com)  
facebook <https://www.facebook.com/drcoscom>

Seam allowance 1/2in.

Grain Line

Back

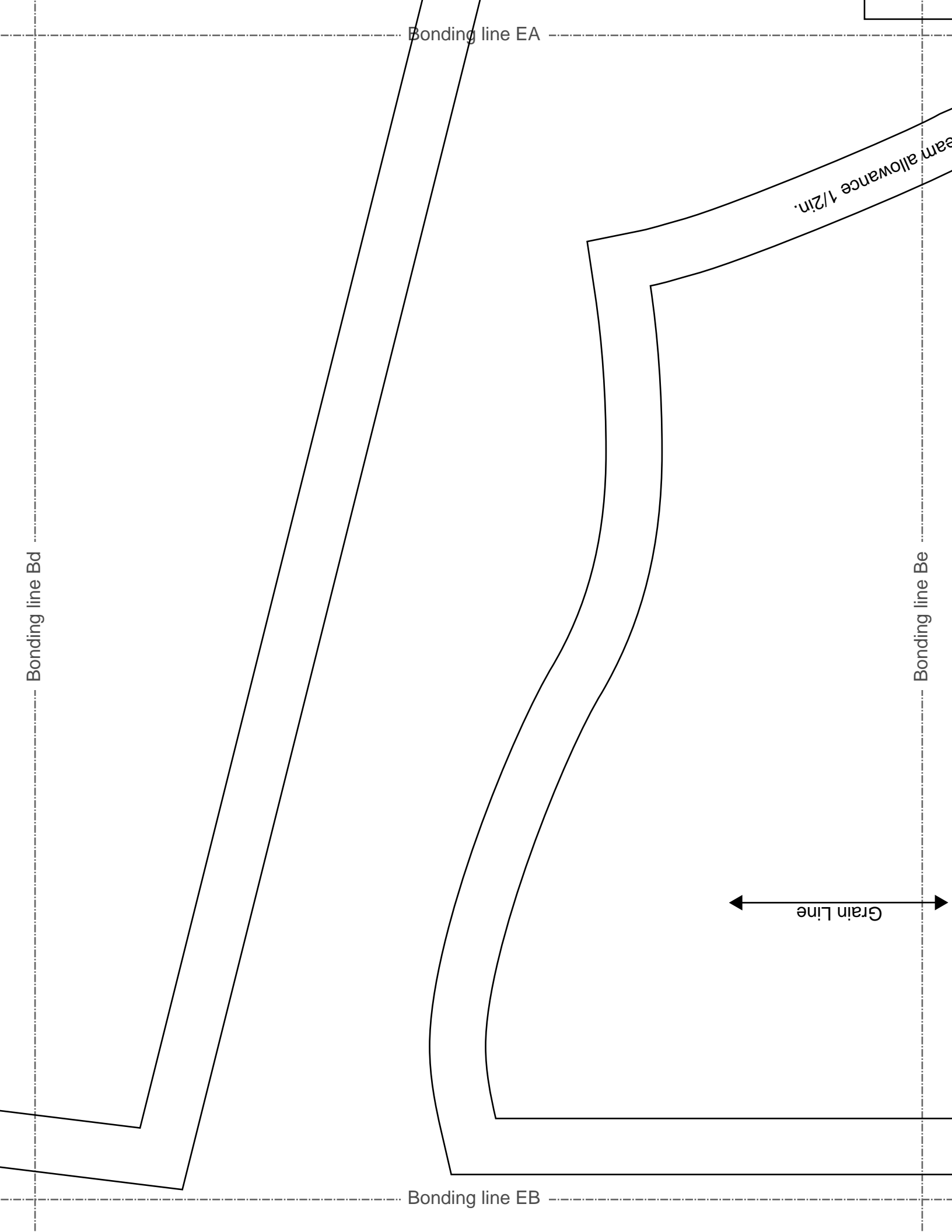
Bonding line Ad

Bonding line Ae

Bonding line EA

size

10



Bonding line EA

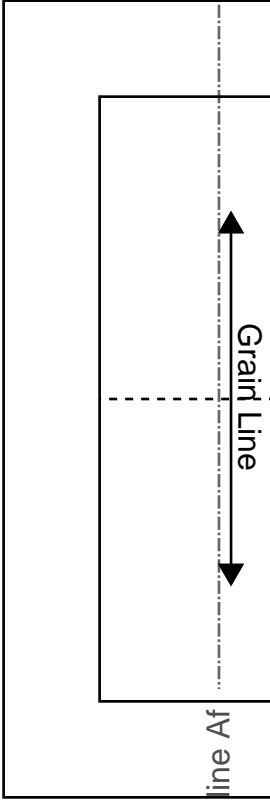
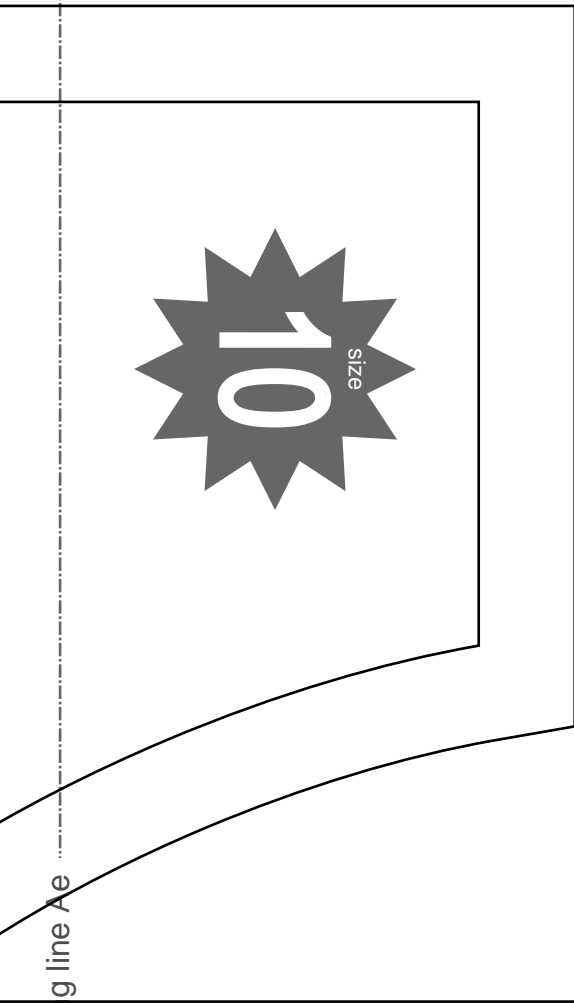
Seam allowance 1/2in.

Bonding line Bd

Bonding line Be

Grain Line

Bonding line EB



Seam allowance 1/2in.

Bonding line FA

Seam allow

# Children's <sup>size</sup> 10

Hoodies  
Hood  
two sheets

**DRCOS**  
 SITE <http://dr-cos.info/en/> | <http://dr-cos.com/lp/>  
 MAIL [info@dr-cos.com](mailto:info@dr-cos.com)  
 Twitter <https://twitter.com/dr-cos>  
 facebook <https://www.facebook.com/drooscom>

Bonding line Be

Bonding line Bf

Bonding line FB

Grain Line

# Children's <sup>size</sup> 10

Hoodie3  
Cuffs rib  
two sheets



Seam allowance 1/2in.

Bonding line Af

# Children's <sup>size</sup> 10

Hoodie3  
rib  
two sheets



Seam allowance 1/2in.

Bonding line GA