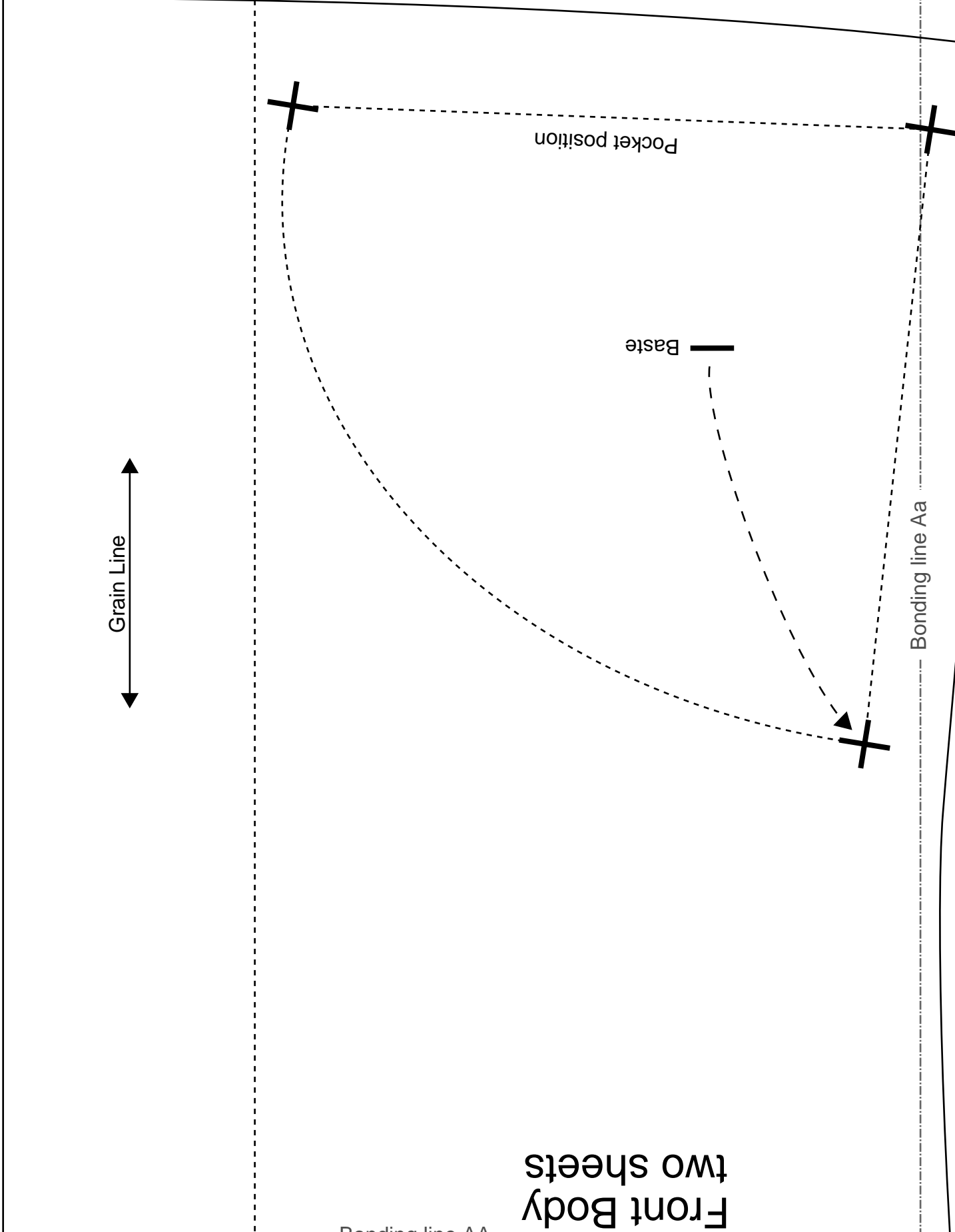


[Home](#)

[Back to Hoodie2 page](#)



Front Body
two sheets

Bonding line AA

Hoodie2

Front Body Hoodie2

Bonding line AA



Children's

Bonding line Ba

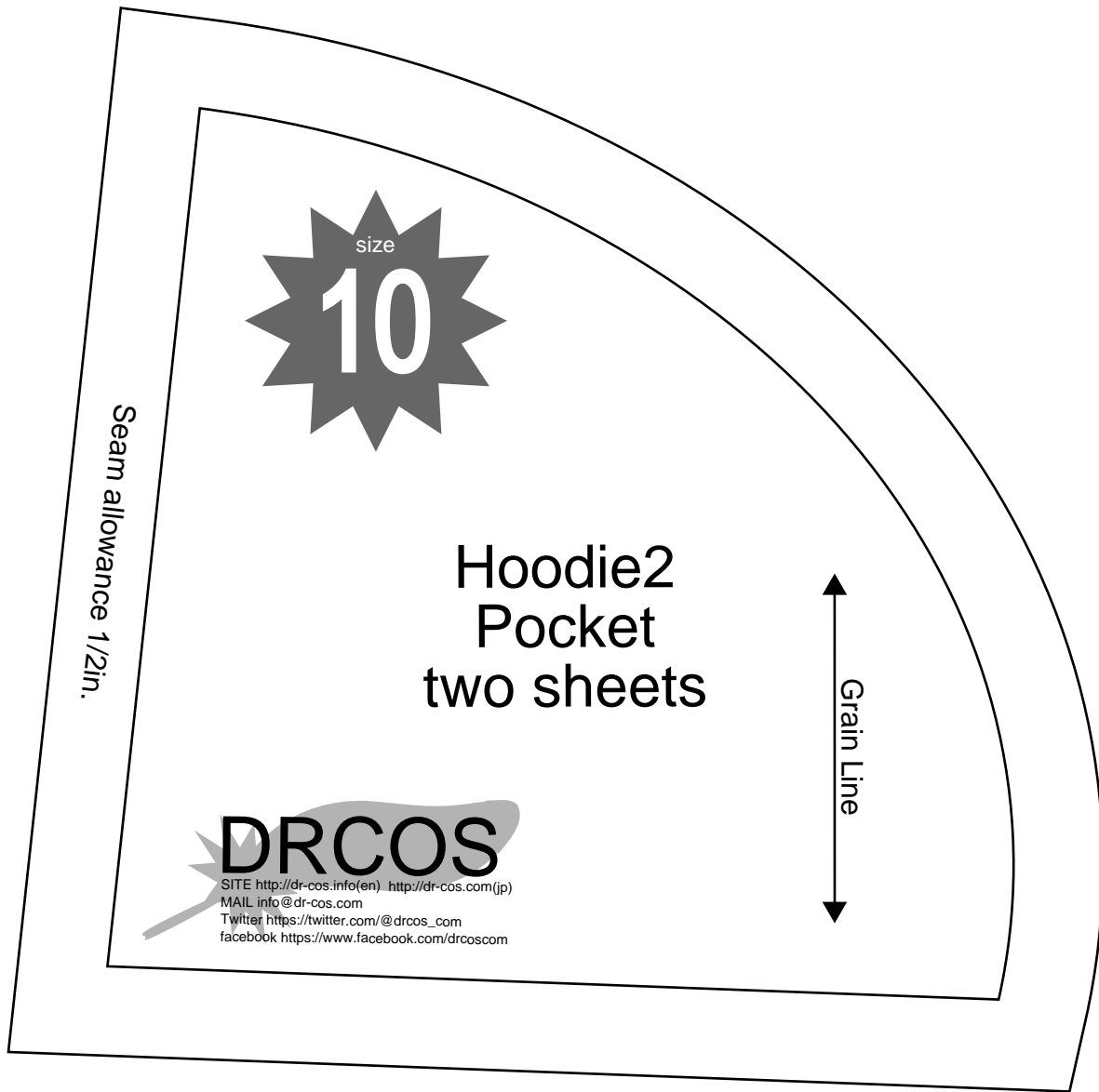
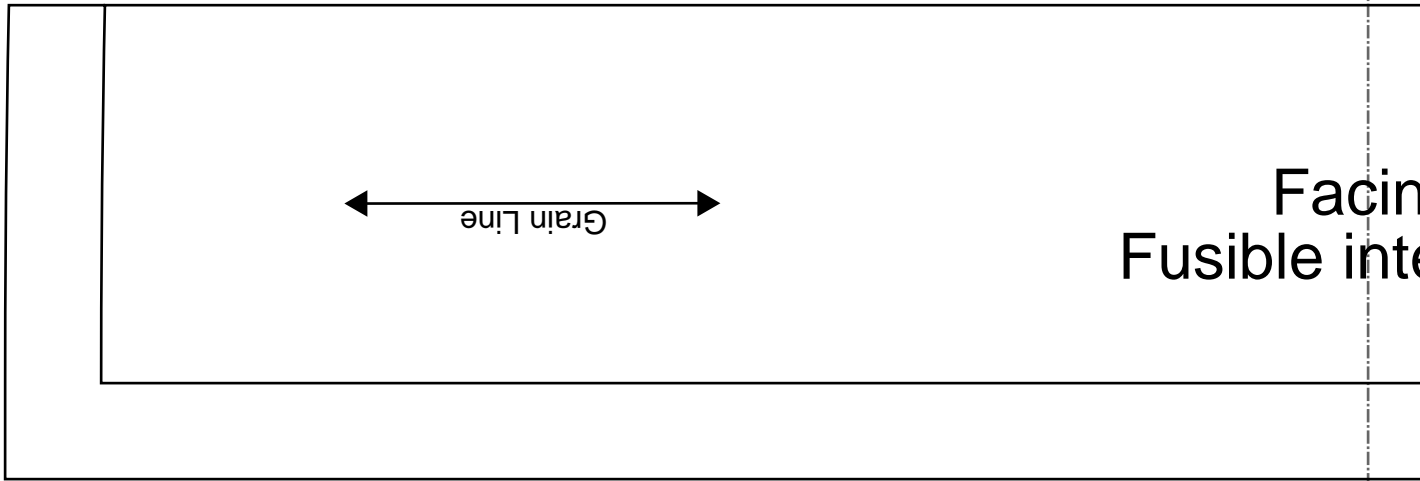
SITE <http://dr-cos.info/en> [http://dr-cos.com\(fp\)](http://dr-cos.com(fp))
MAIL info@dr-cos.com
Twitter https://twitter.com/dr-cos_com
facebook <https://www.facebook.com/drcoscom>

DRCOS

Facing Line

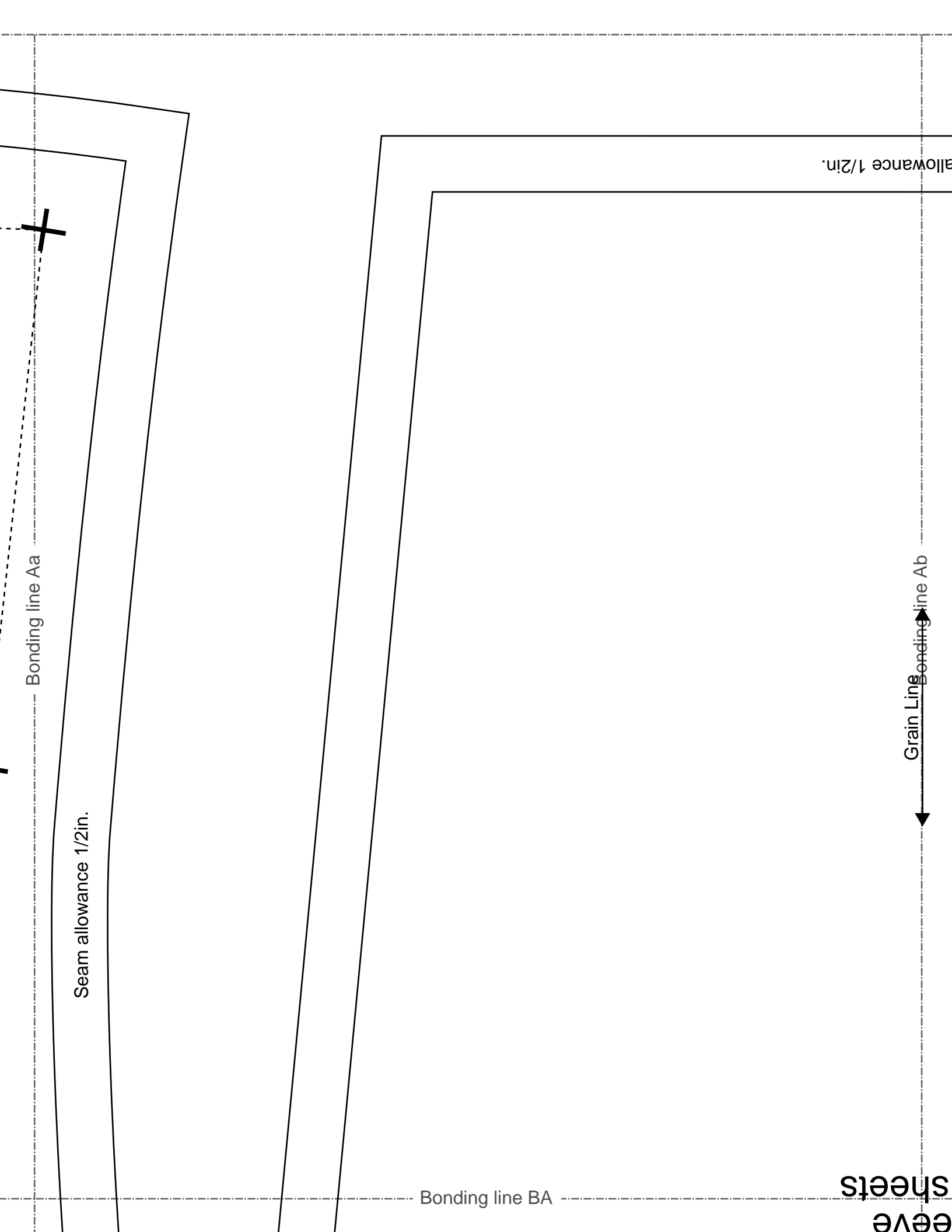
Bonding line AB

Bonding line AB



Bonding line Ca

Bonding line AC



Bonding line Aa

Seam allowance 1/2in.

Bonding line BA

Grain Line

allowance 1/2in.

eave
Sheets



Bonding line BA

Bonding line Ba

Bonding line Bb

Back

Bonding line BB

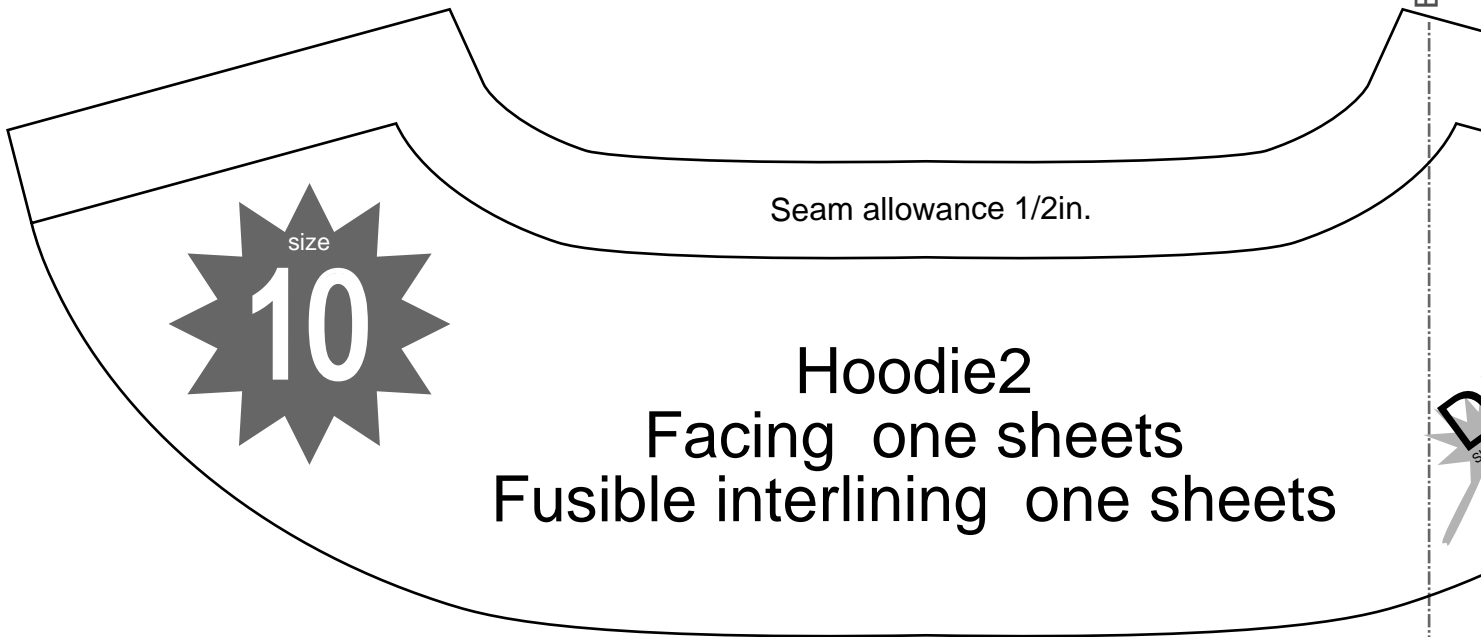
Hoodie2
Facing two sheets
Fusible interlining two sheets

Children's

Seam allowance 1/2in.

Bonding line Ca

Bonding line Cb



SIEVE
two she

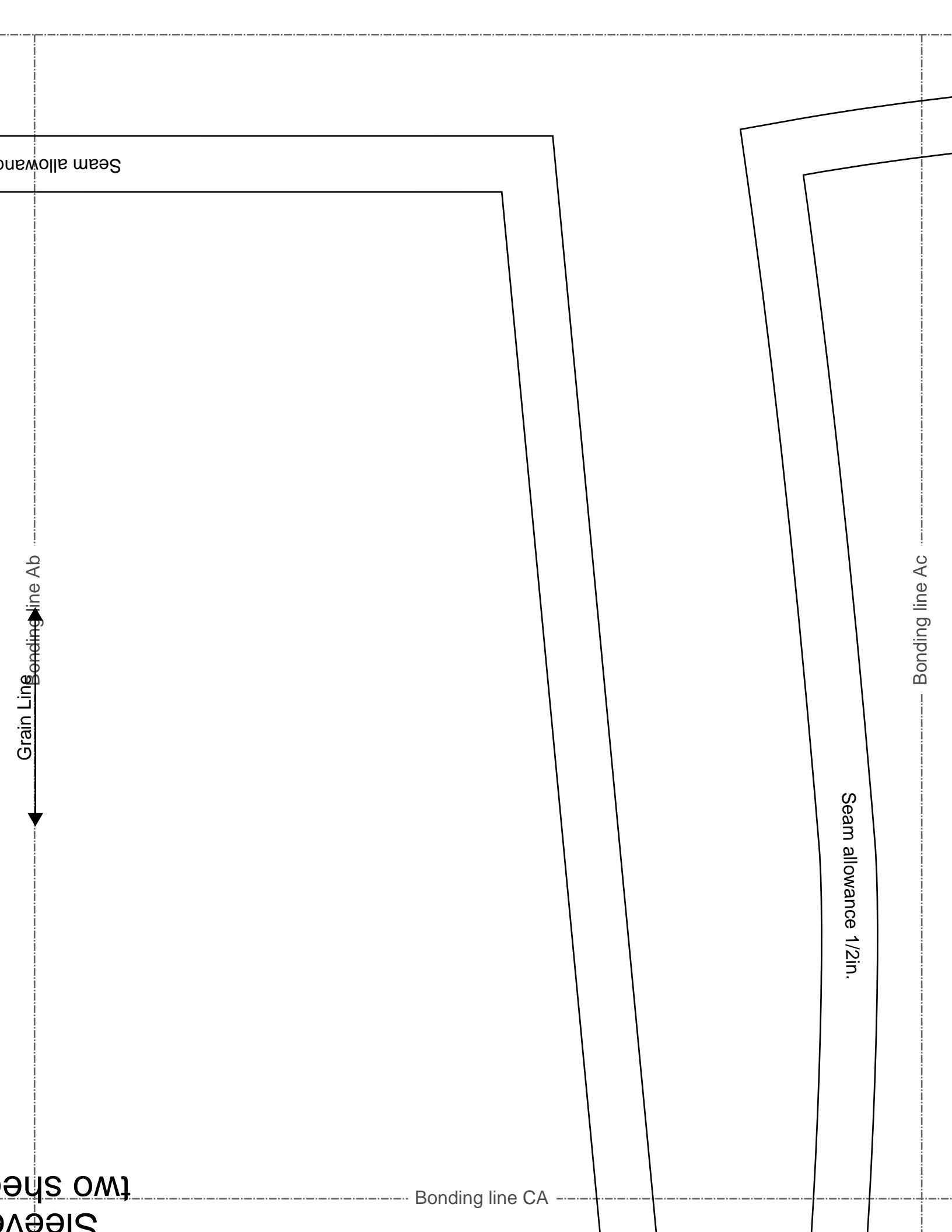
Grain Line
Bonding line Ab

Seam allowance

Bonding line CA

Seam allowance 1/2in.

Bonding line Ac



two she
Sleeve
Hoodie

Bonding line CA

Children

Bonding line Bb

Front

Bonding line Bc

SITE <http://dr-cos.info/en> <http://dr-cos.com>
MAIL info@dr-cos.com
Twitter <https://twitter.com/dr-cos>
facebook <https://www.facebook.com/dr-cos>

DRCC

SITE <http://dr-cos.info/en> <http://dr-cos.com>
MAIL info@dr-cos.com
Twitter <https://twitter.com/dr-cos>
facebook <https://www.facebook.com/dr-cos.com>

DRCCOS

Bonding line CB

en's **10**
size

DRCOS
Bonding line CB

allowance 1/2 in.

Bonding line Cb

Bonding line Cc

DRCOS
SITE <http://drc-cos.info/en> <http://drc-cos.com/fp>
MAIL info@drc-cos.com
Twitter <https://twitter.com/drcos>
facebook <https://www.facebook.com/drcoscom>

Grain Line

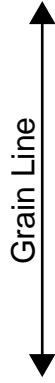
Bonding line CC

Bonding line Ac

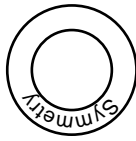
Bonding line Ad

FACEBOOK <https://www.facebook.com/drcos.com>
TWITTER https://twitter.com/drcos_com
EMAIL info@drcos.com
WEBSITE [http://drcos.info\(en\)](http://drcos.info(en)) [http://drcos.com\(fp\)](http://drcos.com(fp))

DRCOS



Hoodie2
Back Body
one sheets





Children's

5yymm

Bonding line Bc

Bonding line Bd

Facing Line

Bonding line DB

Bonding line DB

Seam allowance

Bonding line Cc

Bonding line Cd

Hoodie2
Hood
two sheets

Children's ^{size} 10

DRCOS
 SITE <http://drcos.info/en> | <http://drcos.com/jp>
 MAIL info@drcos.com
 T witter <https://twitter.com/drcos.com>
 facebook <https://www.facebook.com/drcoscom>

Bonding line DC