

DRCOS

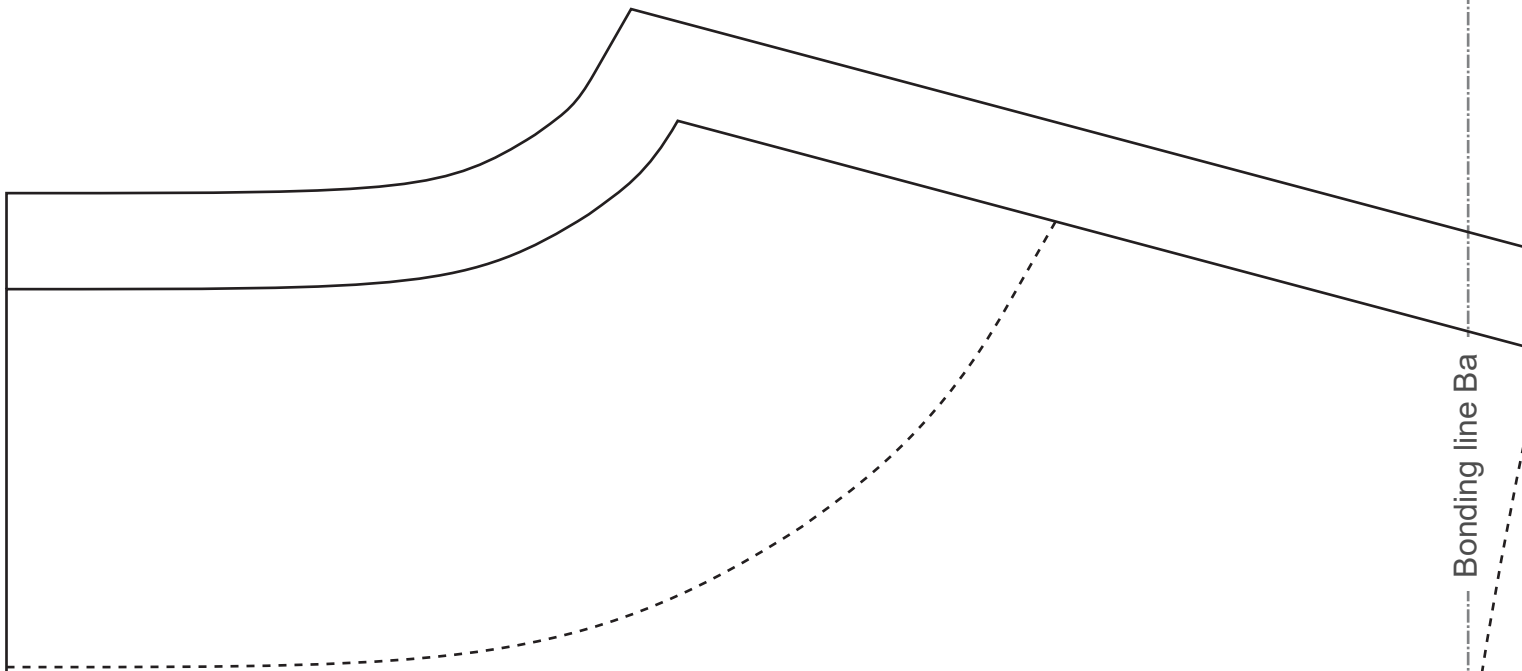
SITE <http://dr-cos.info/en> <http://dr-cos.com/jp>
MAIL info@dr-cos.com
Twitter https://twitter.com/drcos_com
facebook <https://www.facebook.com/drcoscom>

Facing Line

Bonding line Aa

Bonding line AA

Bonding line AA



Facing Line

Bonding line Ba

How to make bias tape. Please refer to this page
<https://www.dr-cos.info/kt-biastape.html>



Bonding line AB

How to sew bias tape. Please refer to this page
<https://www.dr-cos.info/kt-biastape3.html>

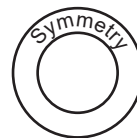


What is "Grainline" cut on fold"?
Please refer to this page
<https://www.dr-cos.info/kt-grainline.html>



Bonding line Ca

MEN'S size M



Hoodie
Back Body
one sheets

Bonding line AC



Bonding line Da

DRCOS
SITE [http://dr-cos.info\(en\)](http://dr-cos.info(en)) [http://dr-cos.com\(jp\)](http://dr-cos.com(jp))
MAIL info@dr-cos.com
Twitter https://twitter.com/@drcos_com
facebook <https://www.facebook.com/drcoscom>

Bonding line AD

Bonding line Aa



Hoodie
Front Body
two sheets

Bonding line Ab

Bonding line BA

Bonding line BA

Seam

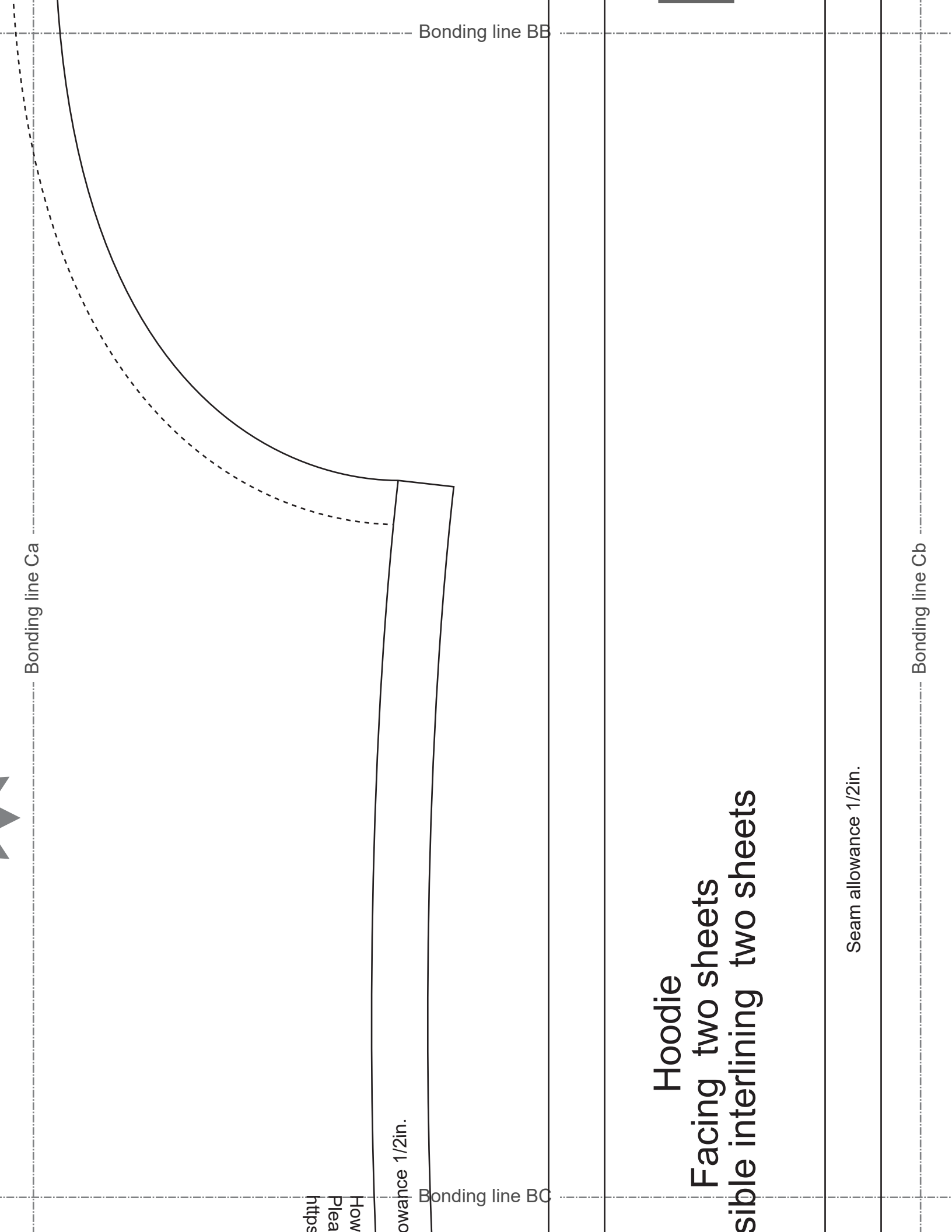
Bonding line Ba

Bonding line Bb

DRCOS
 SITE: <http://drcos.info/en> <http://drcos.com>
 MAIL: info@drcos.com @drcos_com
 Twitter: <https://twitter.com/drcos>
 facebook: <https://www.facebook.com/drcos.com>

MEN'S ^{size} **M**

Bonding line BB



Bonding line Ca

Bonding line BB

How
Plea
https

Seam allowance 1/2in.

Bonding line BC

Hoodie
Facing two sheets
Interlining two sheets

Seam allowance 1/2in.

Bonding line Cb

Bonding line Da

Bonding line BC

Seam allowance

How to Serge/overlock (sewing machine & overlock sewing machine).
Please refer to this page
<https://www.dr-cos.info/kt-serge.html>



Bonding line BD

F
Fusible

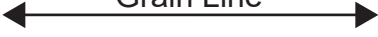


Bonding line Db

Bonding line Ab

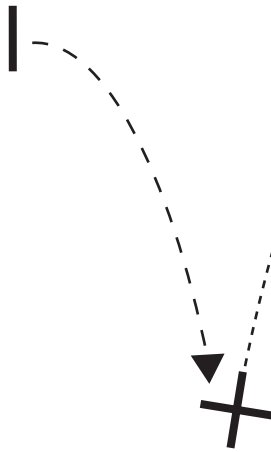
Bonding line Ac

Grain Line



Please refer to this page
gandhem.html

Baste



How to sew pockets.
Please refer to this page
<https://www.dr-cos.info/kt-pocket.html>



Bonding line CA

Bonding line CA

Seam allowance 1/2in.

Bonding line Bb

Seam allowance 1/2in.

Bonding line Bc

MEN'S size **M**

Hoodie
Pocket
two sheets



DRCOS

SITE [http://dr-cos.info\(en\)](http://dr-cos.info(en)) [http://dr-cos.com\(jp\)](http://dr-cos.com(jp))
MAIL info@dr-cos.com
Twitter https://twitter.com/drcos_com
facebook <https://www.facebook.com/drcoscom>

Bonding line CB

How to sew Facing and Hem. Please refer to <https://www.dr-cos.info/kt-facingandhem>

Bonding line Ac

Pocket position

Bonding line DA

Seam allowance 1/2in.

Bonding line Ad

M

Bonding line DA

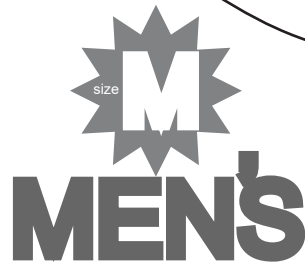
m.



Bonding line Bc

Bonding line Bd

Seam allow



H
Facing
Fusible interli

OS
r-cos.com(jp)
com
om/drcoscom

Bonding line DB

DRCOS

SITE [http://dr-cos.info\(en\)](http://dr-cos.info(en)) [http://dr-cos.com\(jp\)](http://dr-cos.com(jp))
MAIL info@dr-cos.com
Twitter https://twitter.com/drcos_com
facebook <https://www.facebook.com/drcoscom>

MEN'S size M

Hoodie
Hood
two sheets

Bonding line EA

Grain Line

Bonding line Ad

Bonding line Ae

Bonding line EA

rain Line



Bonding line Bd

Bonding line Be

hem allowance 1/2in.

Hoodie
interlining one sheets
interlining one sheets



Bonding line EB