

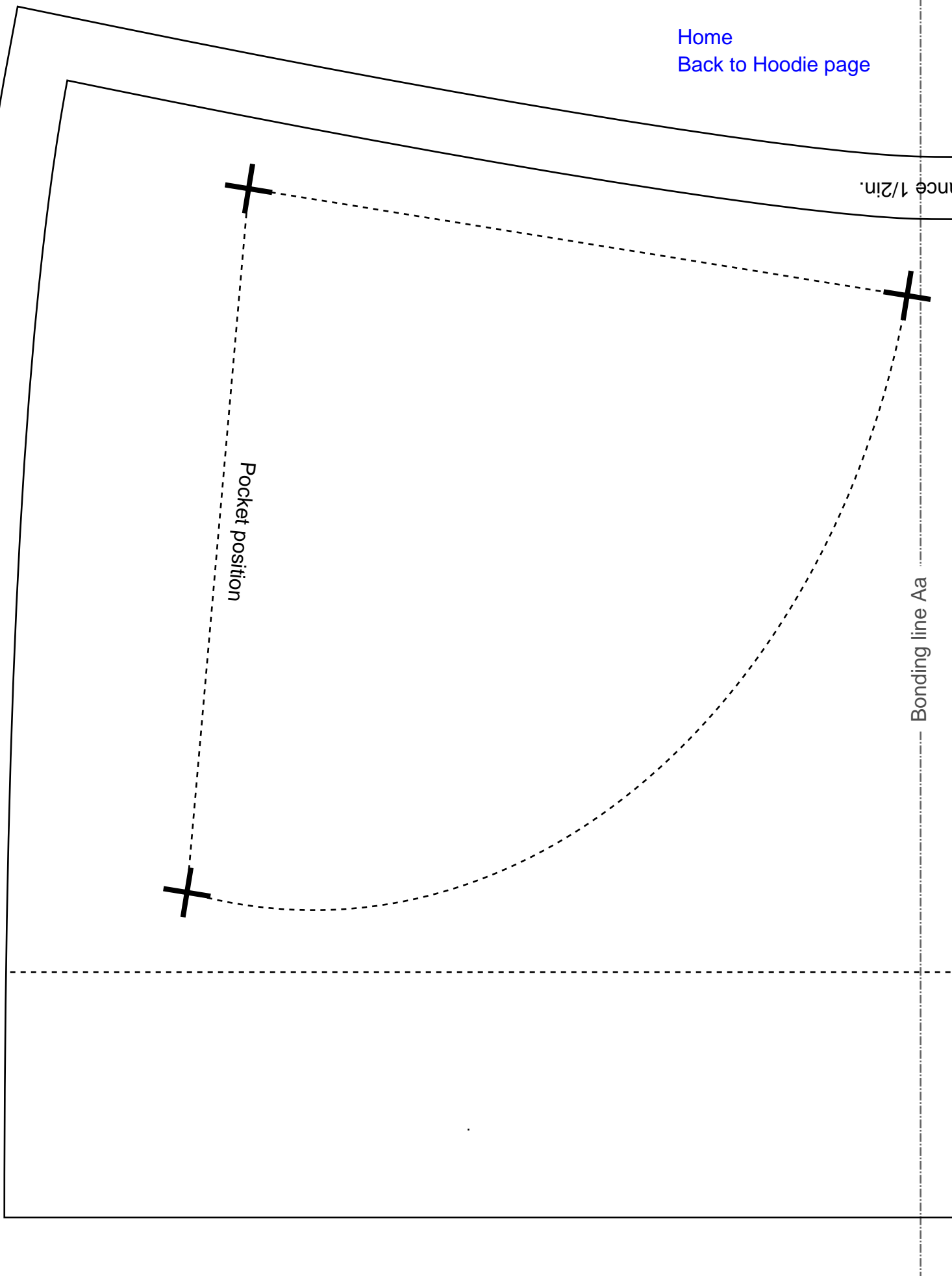
[Home](#)
[Back to Hoodie page](#)

ance 1/2in.

Pocket position

Bonding line Aa

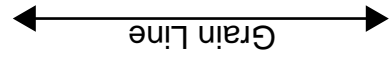
Bonding line AA



Bonding line AA

SITE <http://dr-cos.info/en> <http://dr-cos.com/jp>
MAIL info@dr-cos.com
TWITTER <https://twitter.com/@dr-cos>
FACEBOOK <https://www.facebook.com/dr-cos.com>

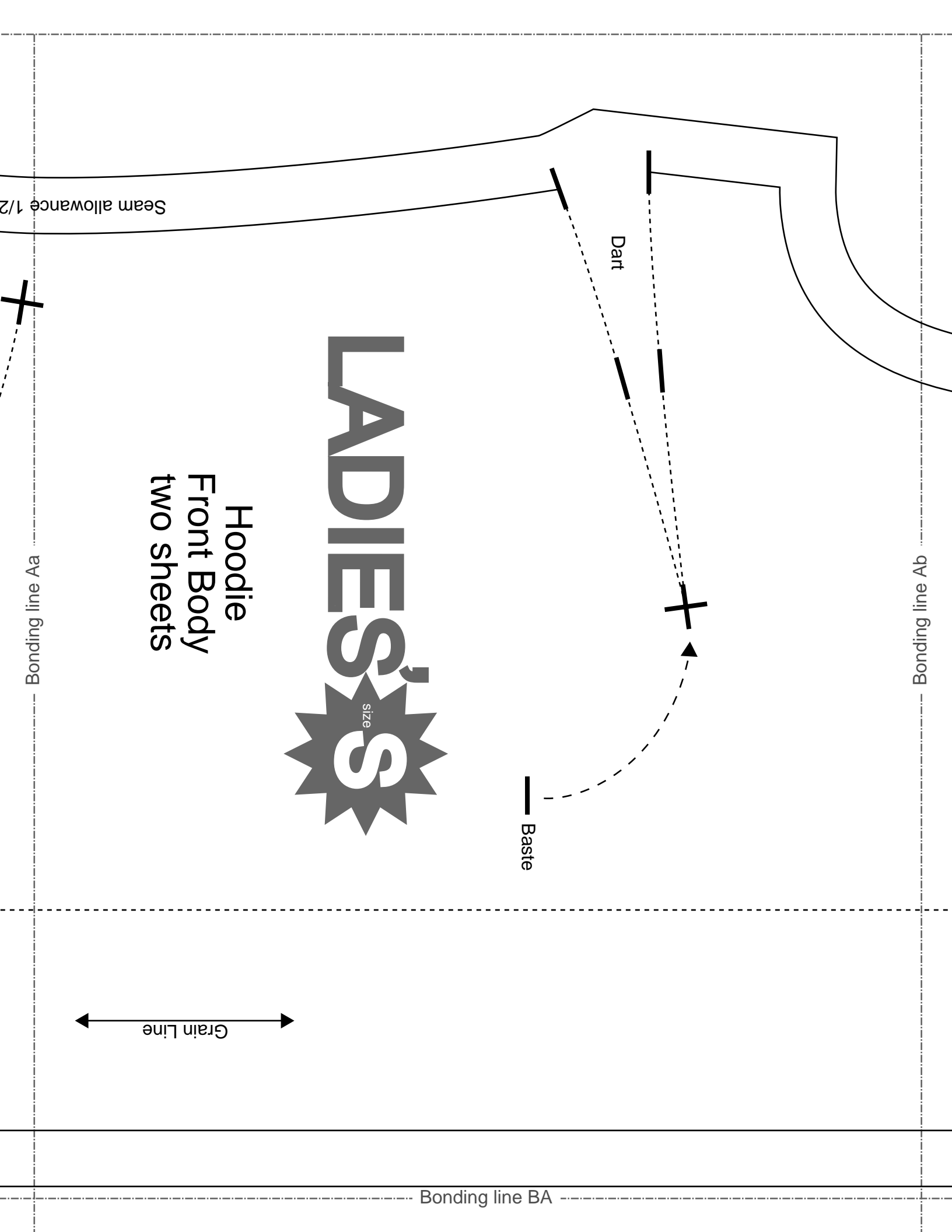
DRCOS



Bonding line Ba

Seam allowa

Bonding line AB



Seam allowance 1/2

Bonding line Aa

Bonding line Ab

Hoodie
Front Body
two sheets

LADIES'S
size

Dart

Baste

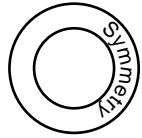
Grain Line

Bonding line BA

Bonding line BA



LADIES'S size



Hoodie
Back Body
one sheets

Bonding line Ba

Bonding line Bb

m allowance 1/2in.

Bonding line BB

Bonding line Ab

Bonding line Ac

Facing Line



DRCOS
SITE <http://dr-cos.info/en>, <http://dr-cos.com>
MAIL info@dr-cos.com
TWITTER [@drcos_com](https://twitter.com/@drcos_com)
FACEBOOK <https://www.facebook.com/drcoscom>

Bonding line CA

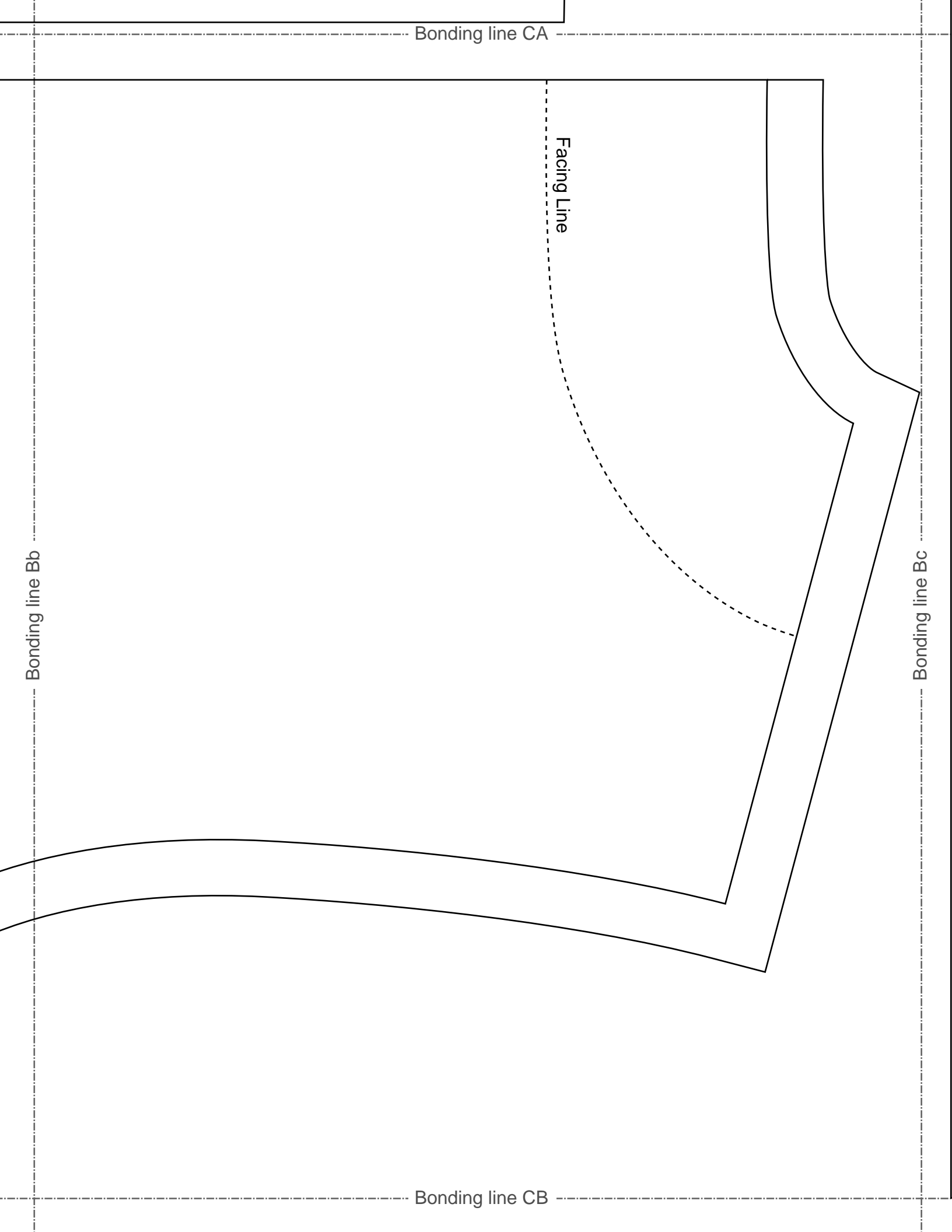
Bonding line CA

Facing Line

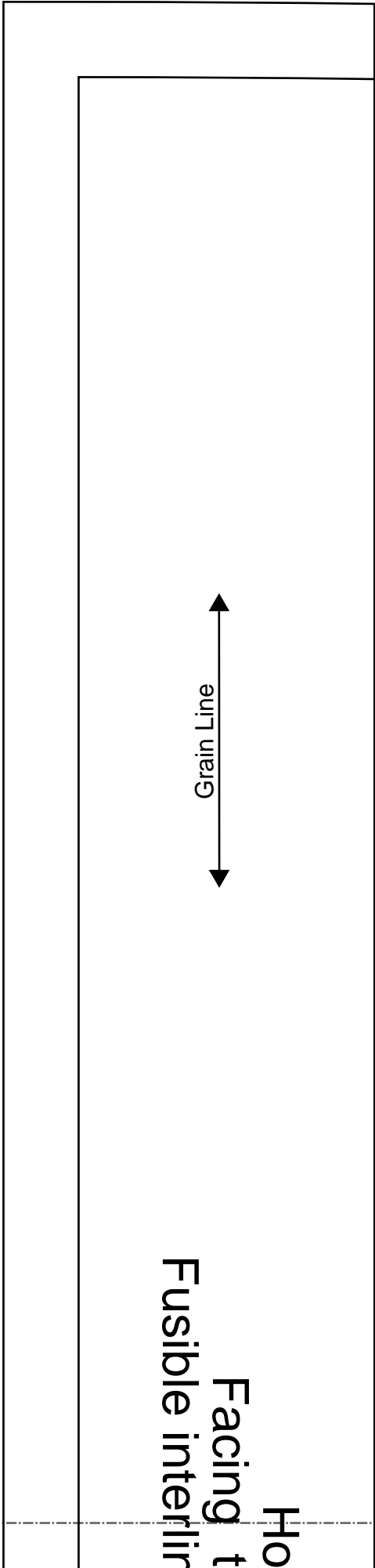
Bonding line Bb

Bonding line Bc

Bonding line CB



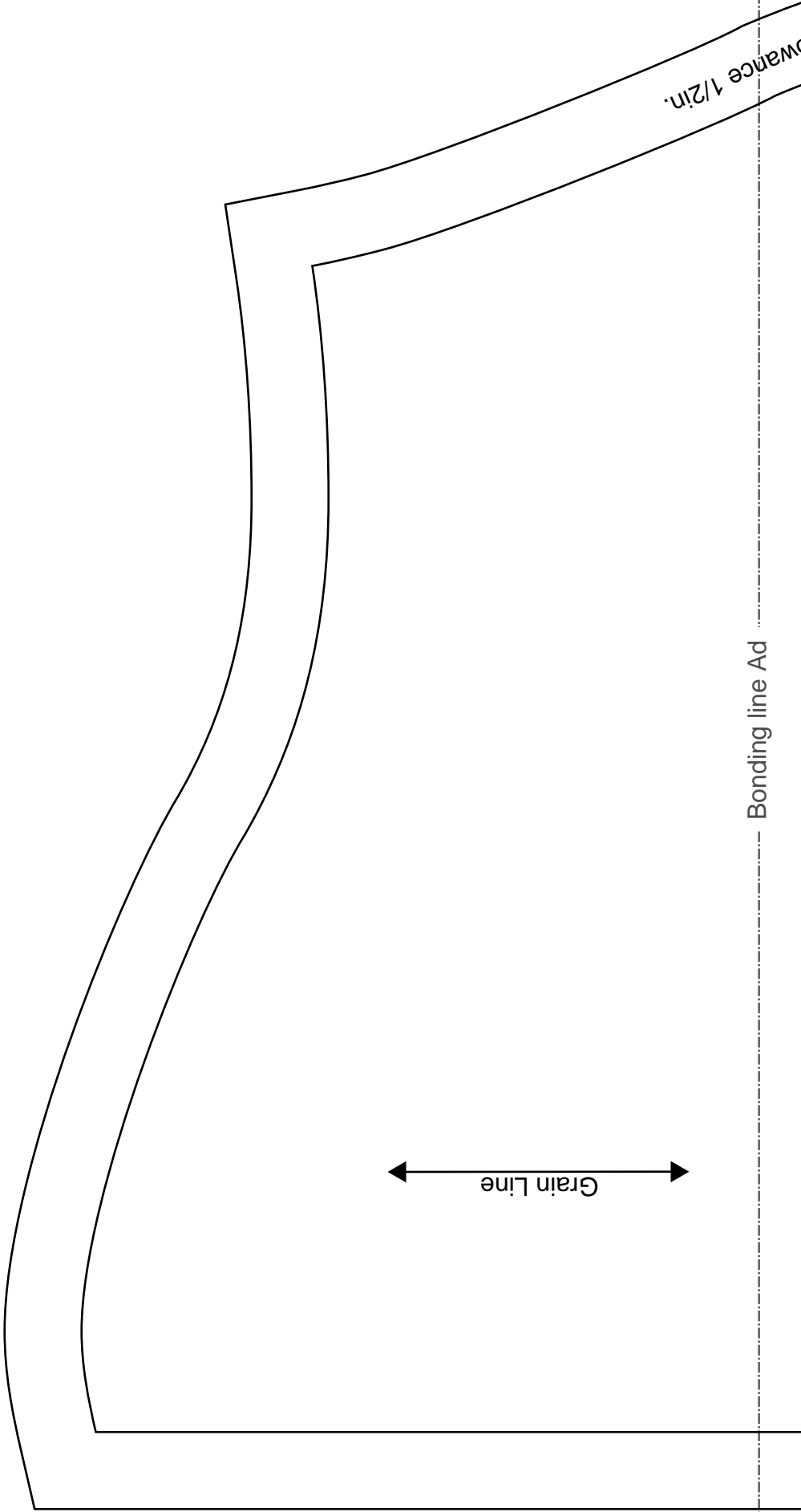
Bonding line Ac



Grain Line

HO Facing t
Fusible interlir

Bonding line DA



Grain Line

Advance 1/2 in.

Bonding line Ad

Bonding line Bd

Seam allowance 1/2in.

Grain Line



Hoodie
Facing one sheets
Fusible interlining one sheets



Bonding line DA

Bonding line DB

Hoodie
Interlining two sheets
Facing two sheets



Seam allowance 1/2in.

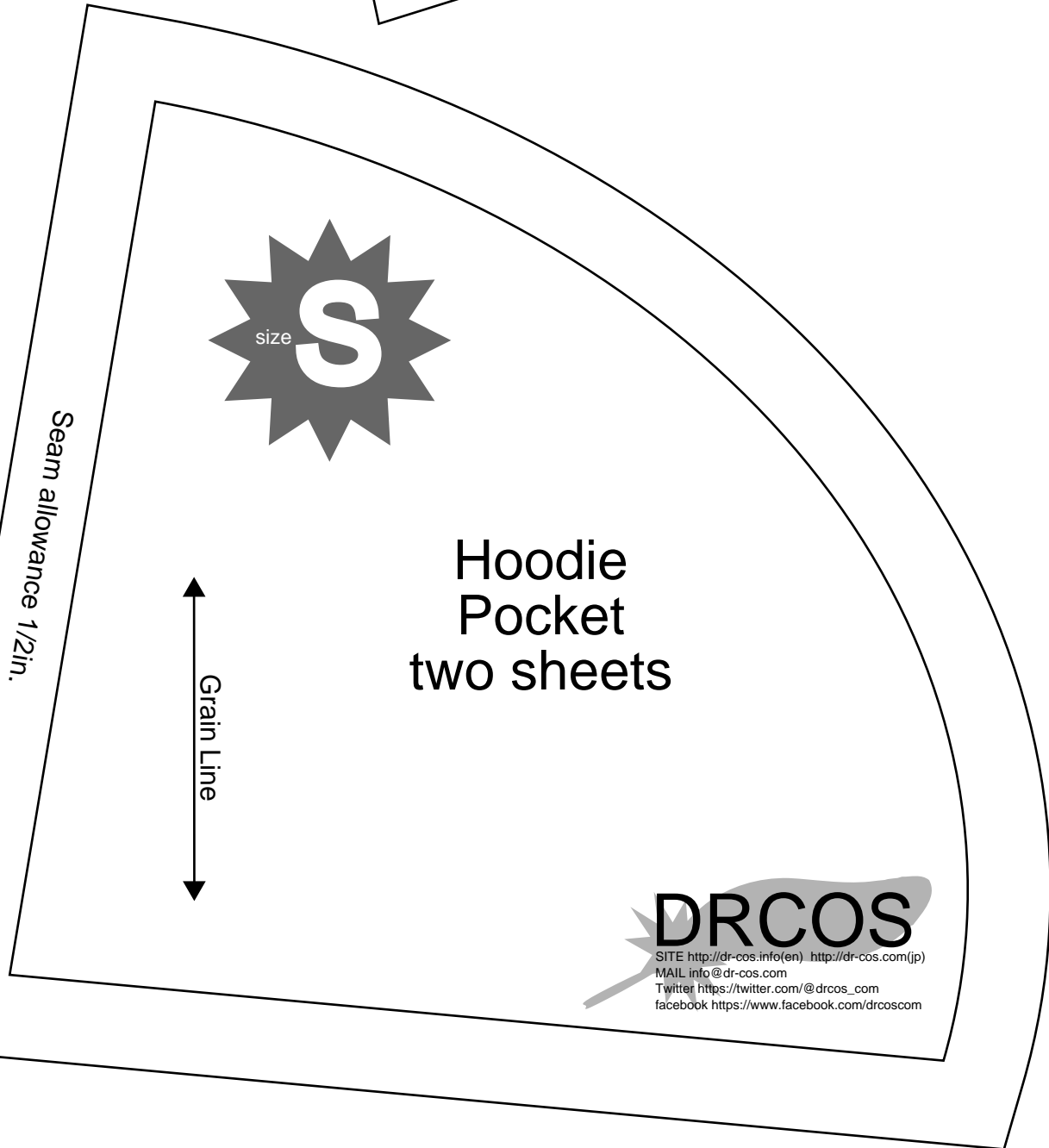
Bonding line Bc

Bonding line DB



Bonding line Cc

Bonding line Cd



Seam allowance 1/2in.



Grain Line

Hoodie Pocket two sheets



SITE [http://dr-cos.info\(en\)](http://dr-cos.info(en)) [http://dr-cos.com\(jp\)](http://dr-cos.com(jp))
MAIL info@drcos.com
Twitter https://twitter.com/drcos_com
facebook <https://www.facebook.com/drcoscom>

Bonding line DC

Seam allowance 1

Bonding line Ad

Hoodie
Hood
two sheets

LADIES'S
size
S

DRCOS
SITE <http://dr-cos.info/en> <http://dr-cos.com/jp>
MAIL info@dr-cos.com
Twitter <https://twitter.com/v@drcos>
facebook <https://www.facebook.com/drcos.com>

Bonding line EA

Bonding line Ae