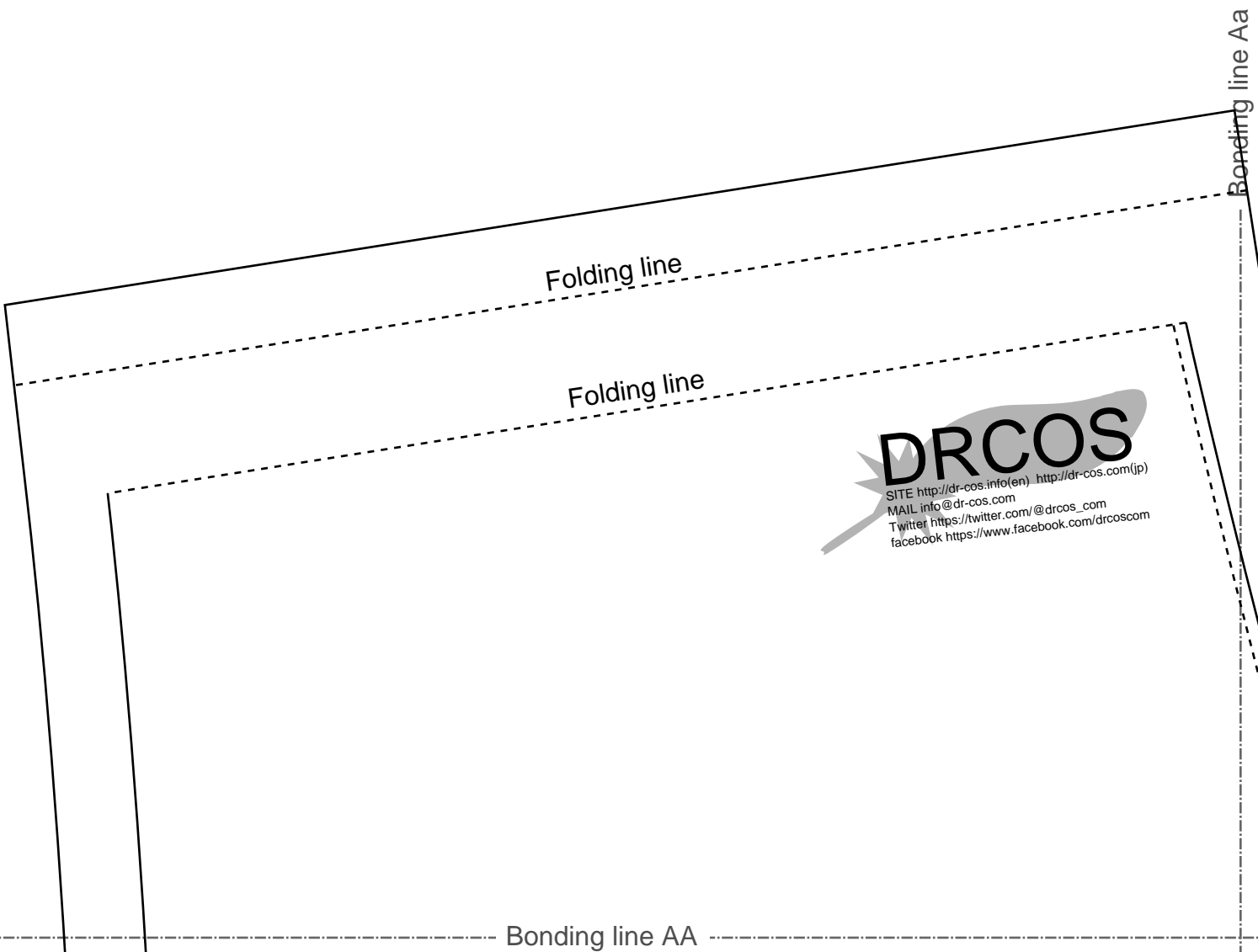


[Home](#)

[Back to Gauchopants page](#)



DRCOS
SITE [http://dr-cos.info\(en\)](http://dr-cos.info(en)) [http://dr-cos.com\(ip\)](http://dr-cos.com(ip))
MAIL info@dr-cos.com
Twitter https://twitter.com/drcos_com
facebook <https://www.facebook.com/drcoscom>

Bonding line AA

Bonding line AA

Bonding line Ba

Children's 8

Gauchopants
Back body
two sheets

Bonding line AB

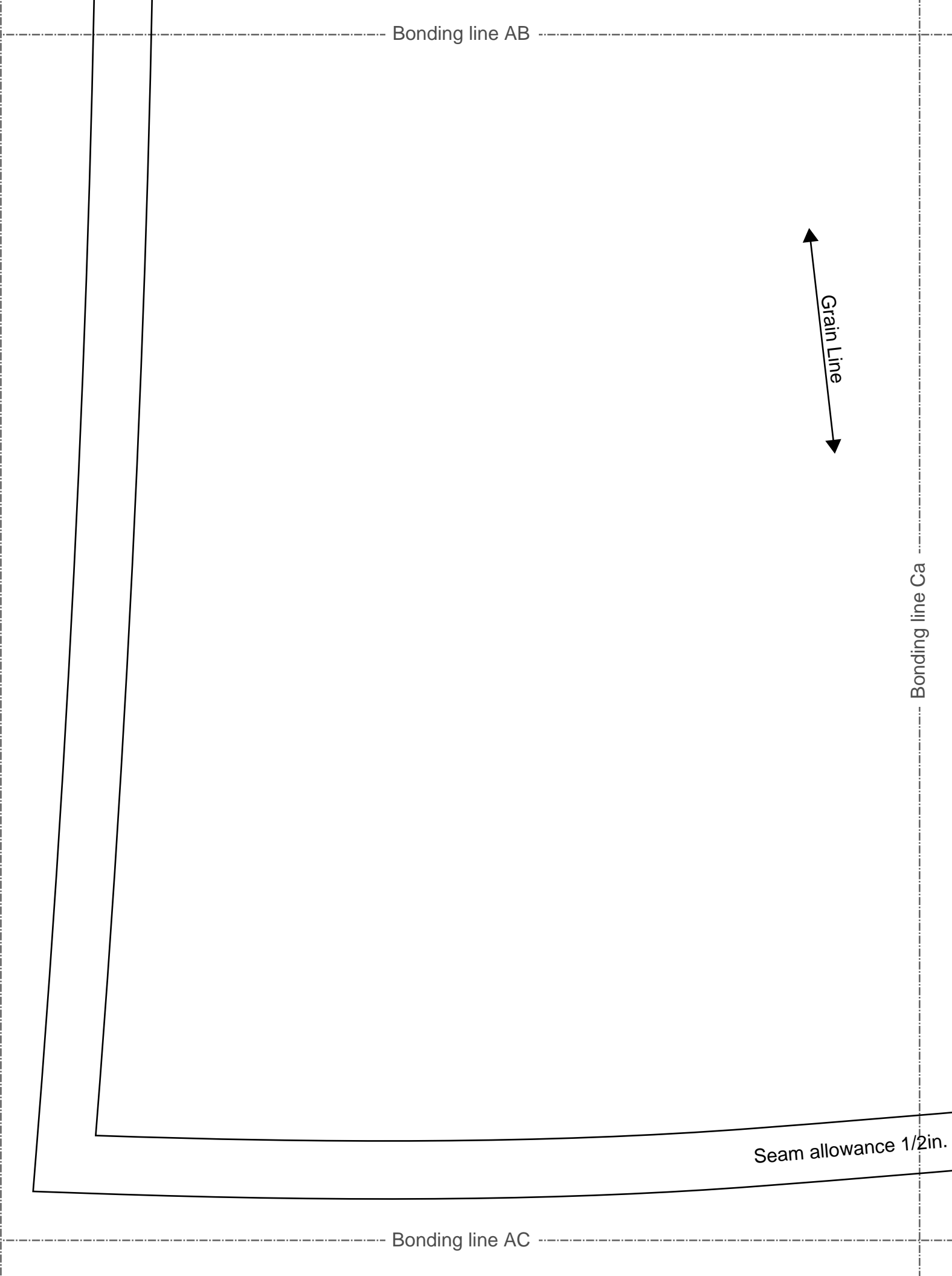
Bonding line AB

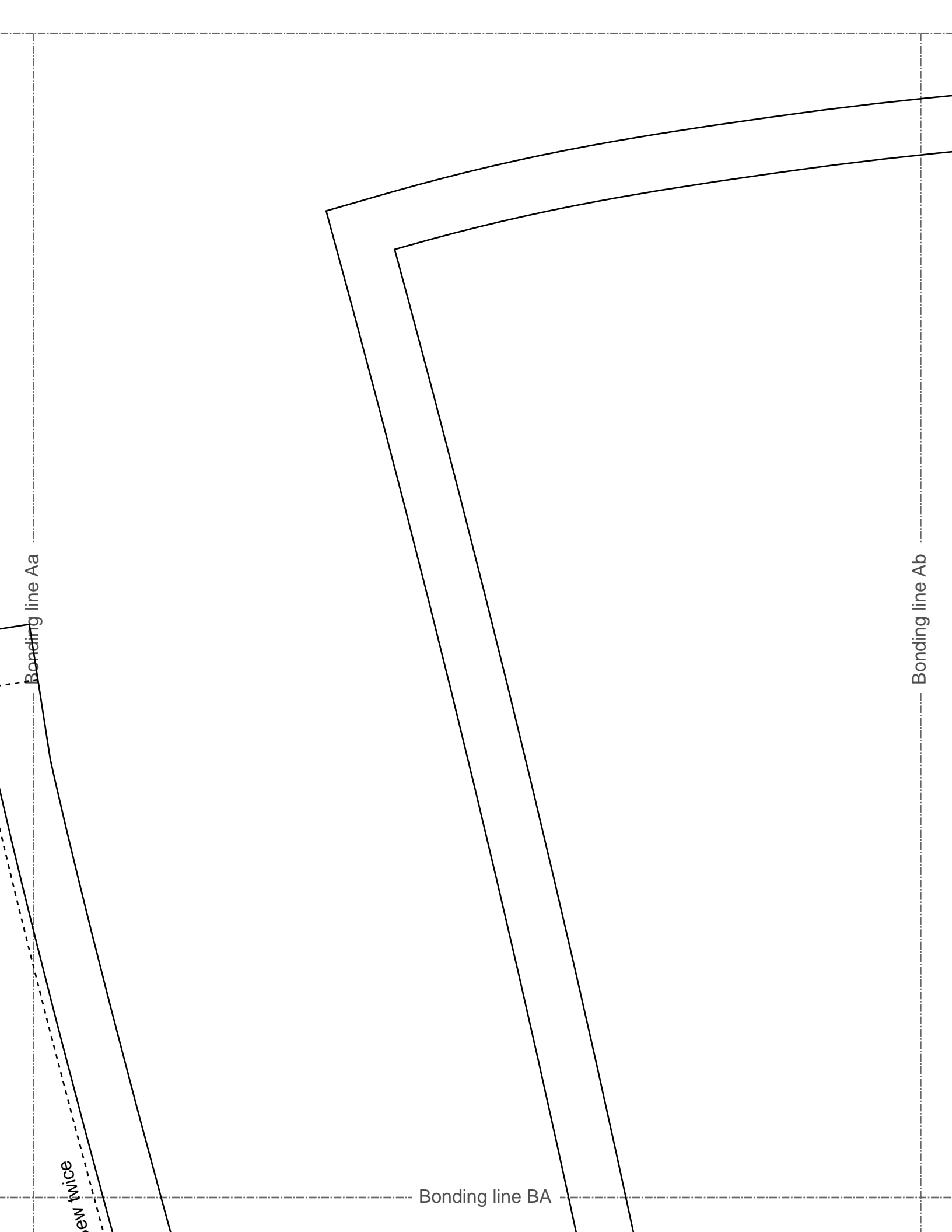
Grain Line

Bonding line Ca

Seam allowance 1/2in.

Bonding line AC





Bonding line Aa

Bonding line Ab

Bonding line BA

ew twice

Bonding line BA

Sew twice

Bonding line Ba

Bonding line Bb

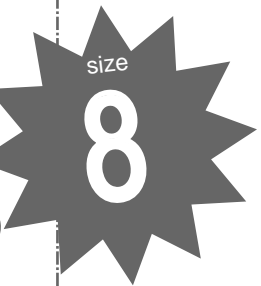
Bonding line BB

size

8

8

8



Bonding line BB

Bonding line Ca

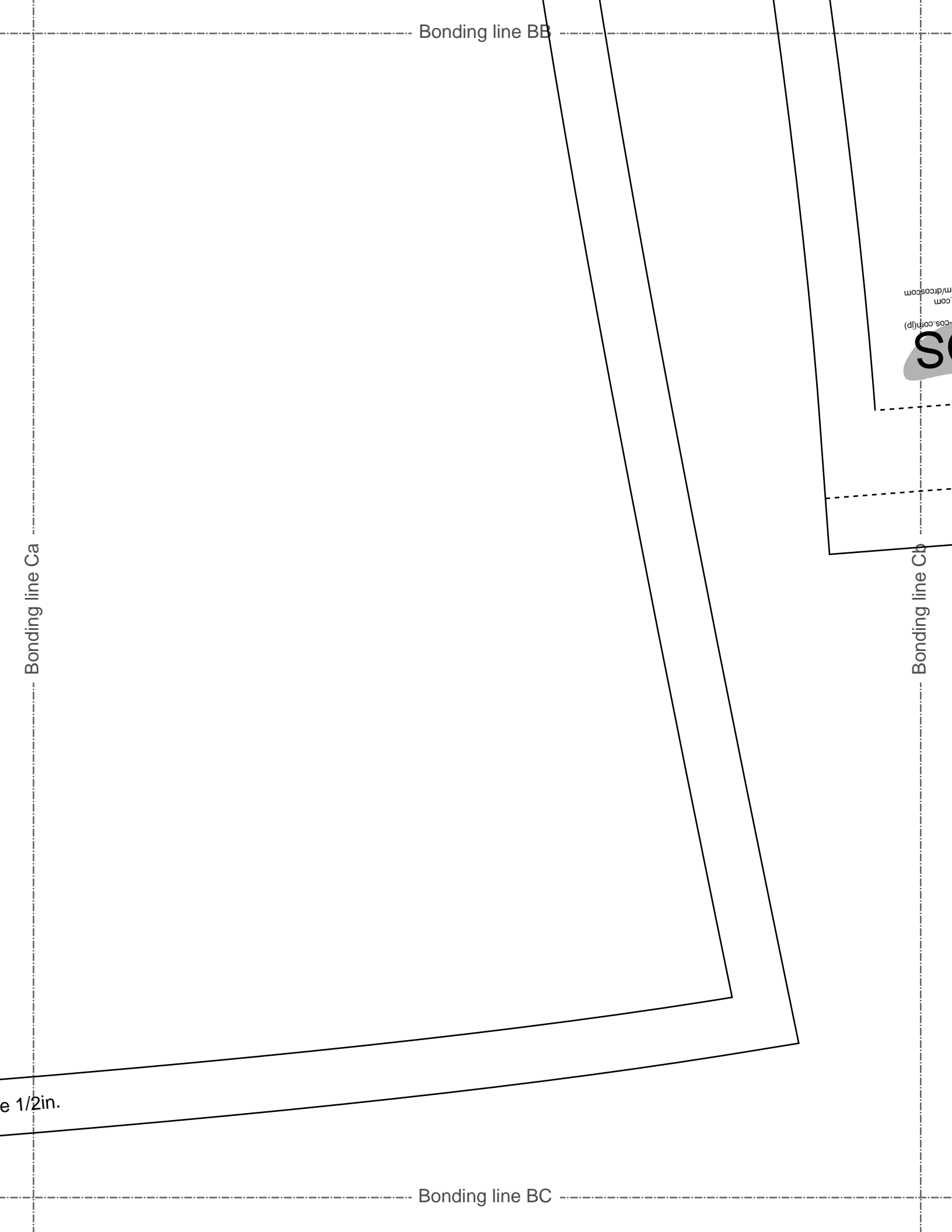
Bonding line Cb

1/2in.

Bonding line BC

ndrosc.com
-cos.com(dp)

Sc

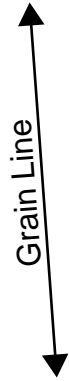


Bonding line Ab

Bonding line Ac

Bonding line CA

Seam allowance 1/2in.



Bonding line CA

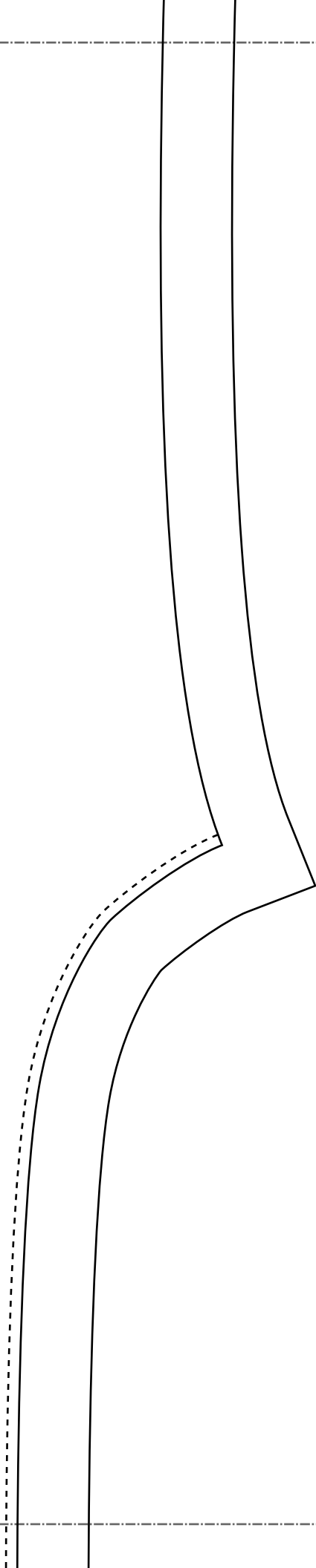
Gauchopants
Front body
two sheets

Children's size 8

Bonding line Bb

Bonding line Bc

Bonding line CB



Bonding line CB

SITE <http://dr-cos.info/en> <http://dr-cos.com/jp>
MAIL info@dr-cos.com
Twitter https://twitter.com/dr-cos_com
facebook <https://www.facebook.com/drcoscom>

Folding line

Folding line

Bonding line Cb

Bonding line Cc

Bonding line CC