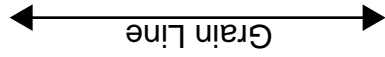


[Home](#)

[Back to Blousonhoodie page](#)



Bonding line Aa

Bonding line AA

Bonding line AA

Seam allowance 1/2in.

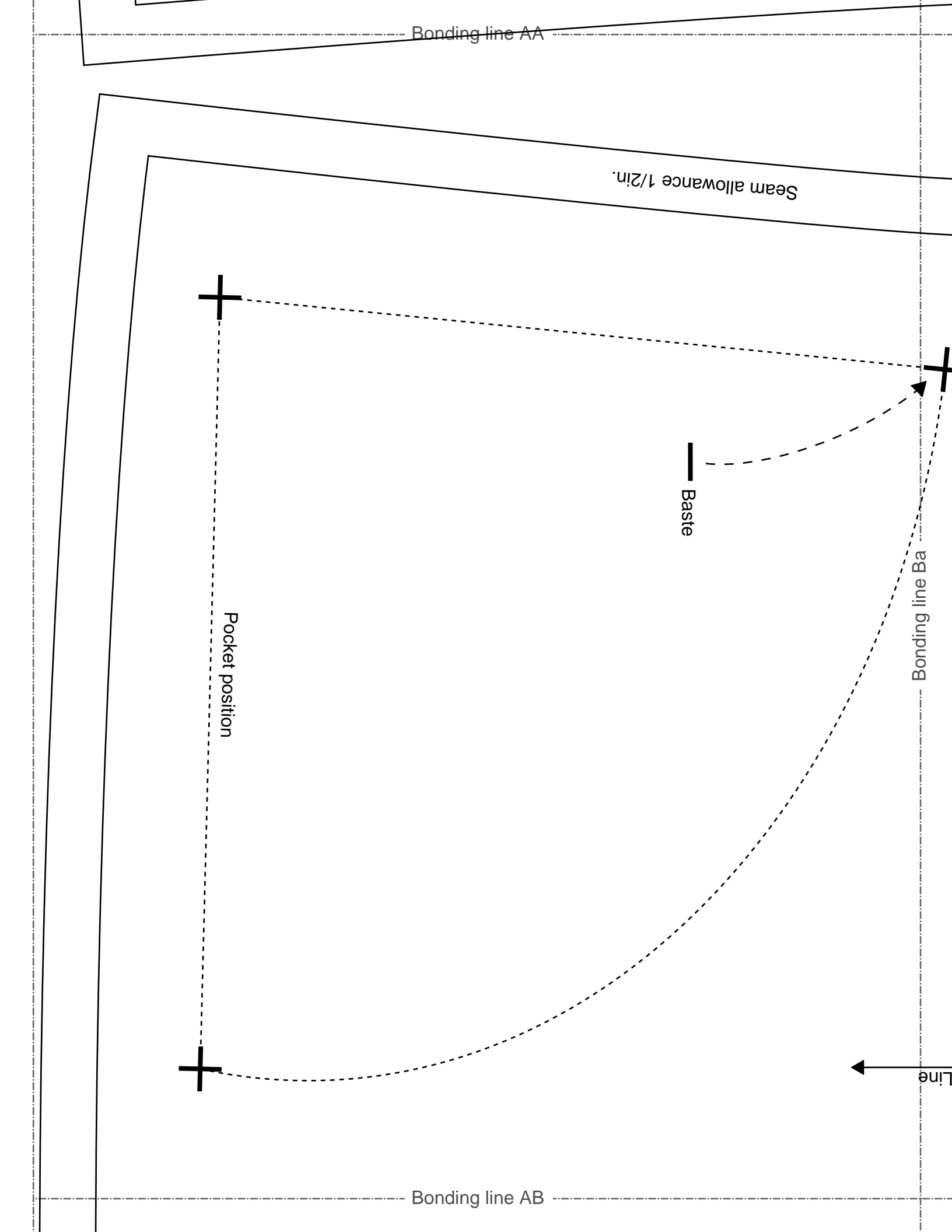
Baste

Pocket position

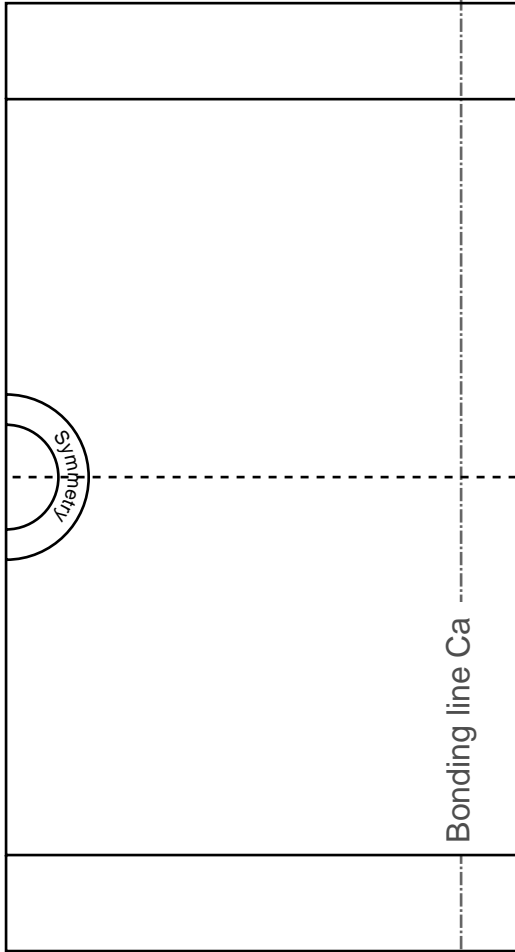
Bonding line Ba

Bonding line AB

Line



Bonding line AB



Bonding line Ca

Symmetry

Seam allowance 1/2in.

LADIES' size M

Blousonhoodie
Pocket
two sheets

Grain Line

Bonding line AC

Bonding line AC

Line

DRCOS

SITE [http://dr-cos.info\(en\)](http://dr-cos.info(en)) [http://dr-cos.com\(jp\)](http://dr-cos.com(jp))
MAIL info@dr-cos.com
Twitter https://twitter.com/@drcos_com
facebook <https://www.facebook.com/drcoscom>

DRCOS

SITE [http://dr-cos.info\(en\)](http://dr-cos.info(en)) [http://dr-cos.com\(jp\)](http://dr-cos.com(jp))
MAIL info@dr-cos.com
Twitter https://twitter.com/@drcos_com
facebook <https://www.facebook.com/drcoscom>

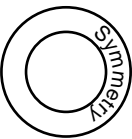
LADIES'S M

size

Bonding line

Bonding line AD

LADIES'S ^{size} M

 Blousonhoodie
Back Body
one sheets



Bonding line Aa

Bonding line Ab

Seam allowance 1/2in.

Bonding line BA

Bonding line BA

Bonding line Bb

LADIES'S

Blousonhoodie
Front Body
two sheets

Bonding line Ba

Bonding line BB

Grain Line

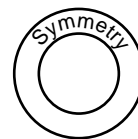


Bonding line BB

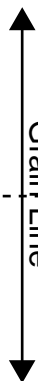
fastener

LADIES

Blouson hood
Hem rib
one sheet



Grain Line



Bonding line Ca

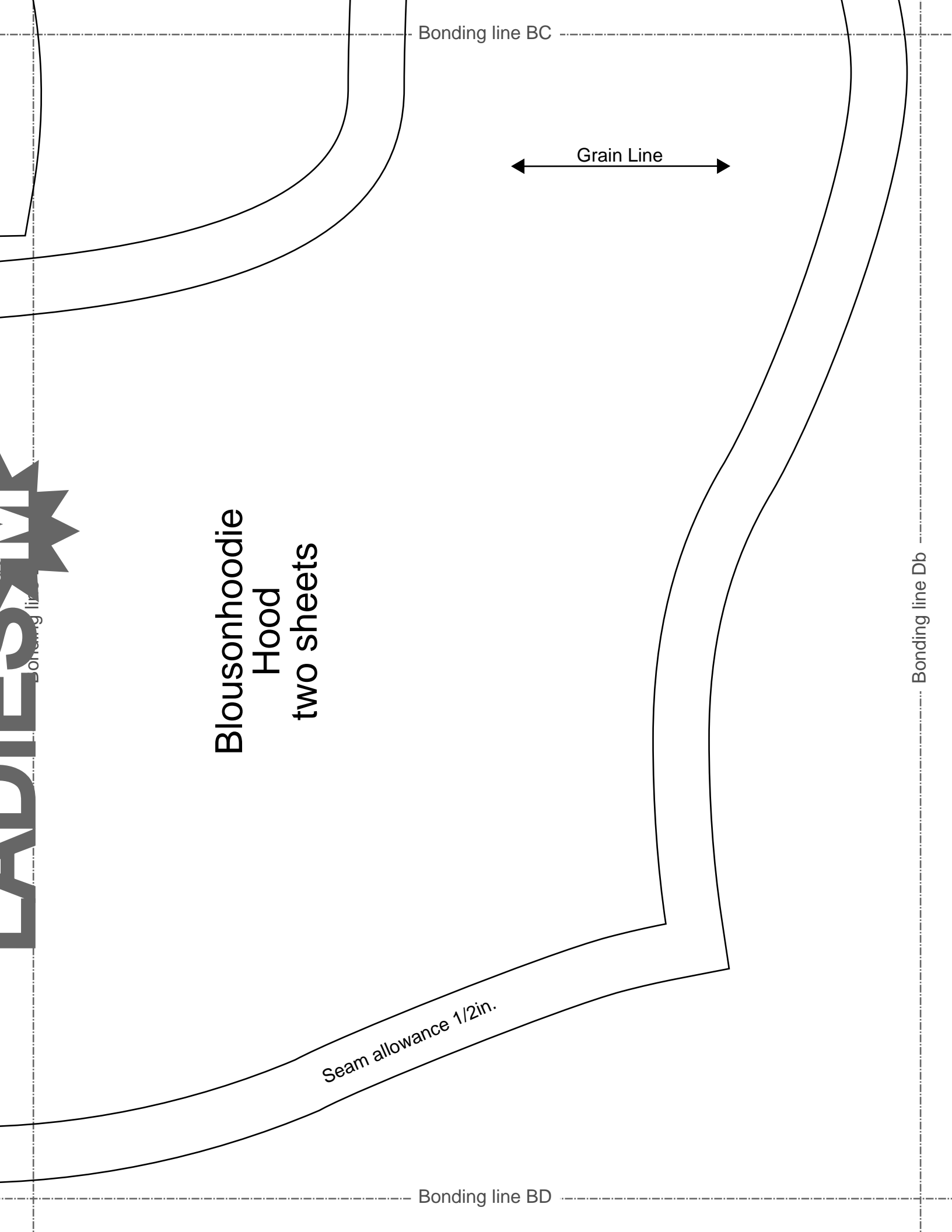
Bonding line Cb

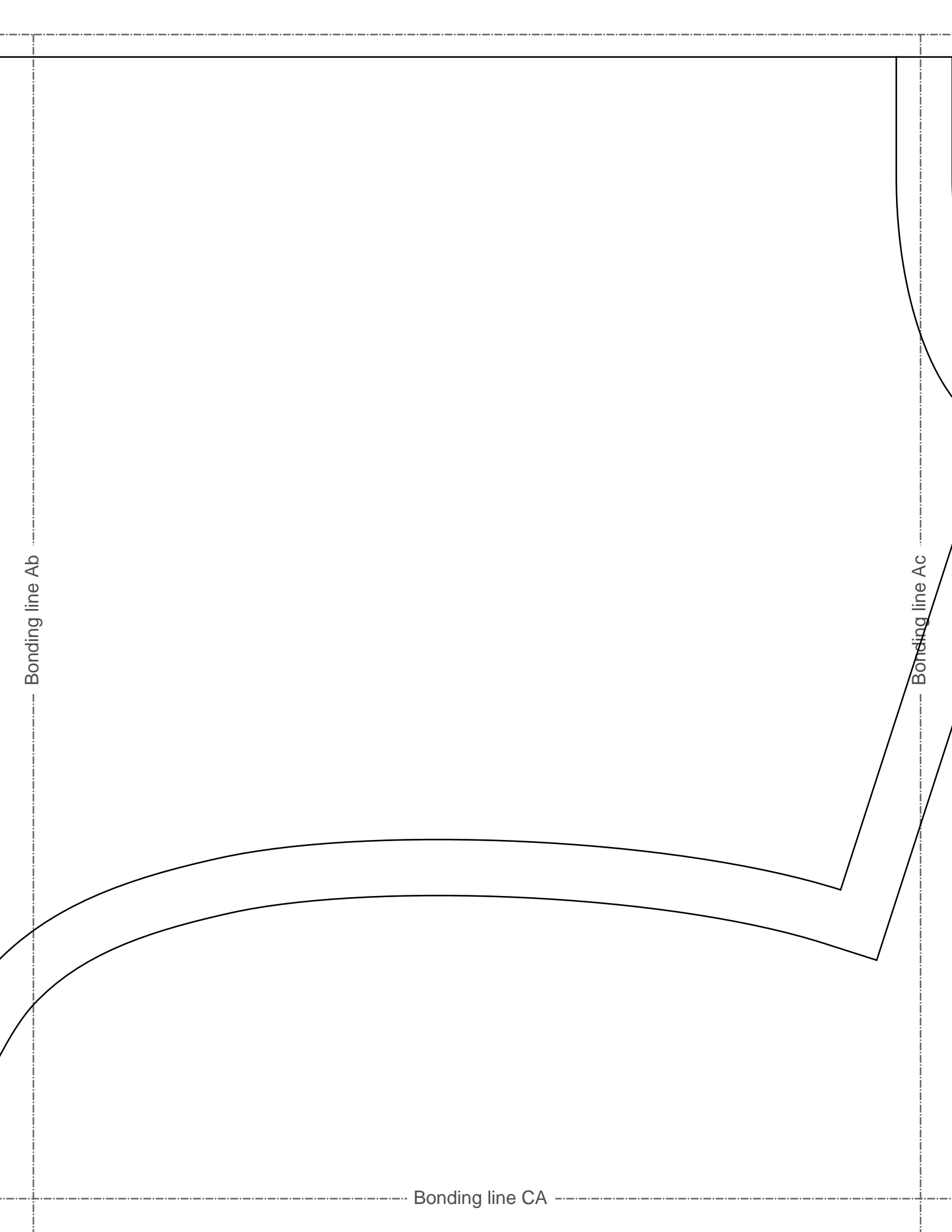
Seam allowance 1/2in

fastener

Bonding line BC

**Blousonhoodie
Hood
two sheets**





Bonding line Ab

Bonding line Ac

Bonding line CA

Bonding line CA

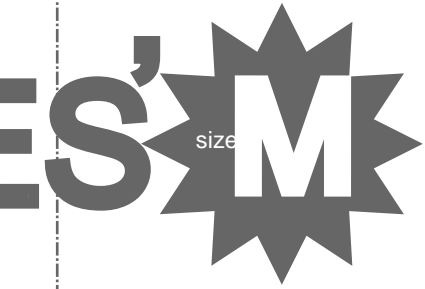
Bonding line Bb

Bonding line Bc



Bonding line CB

Bonding line CB



hoodie
rib
sheets

Bonding line Cb

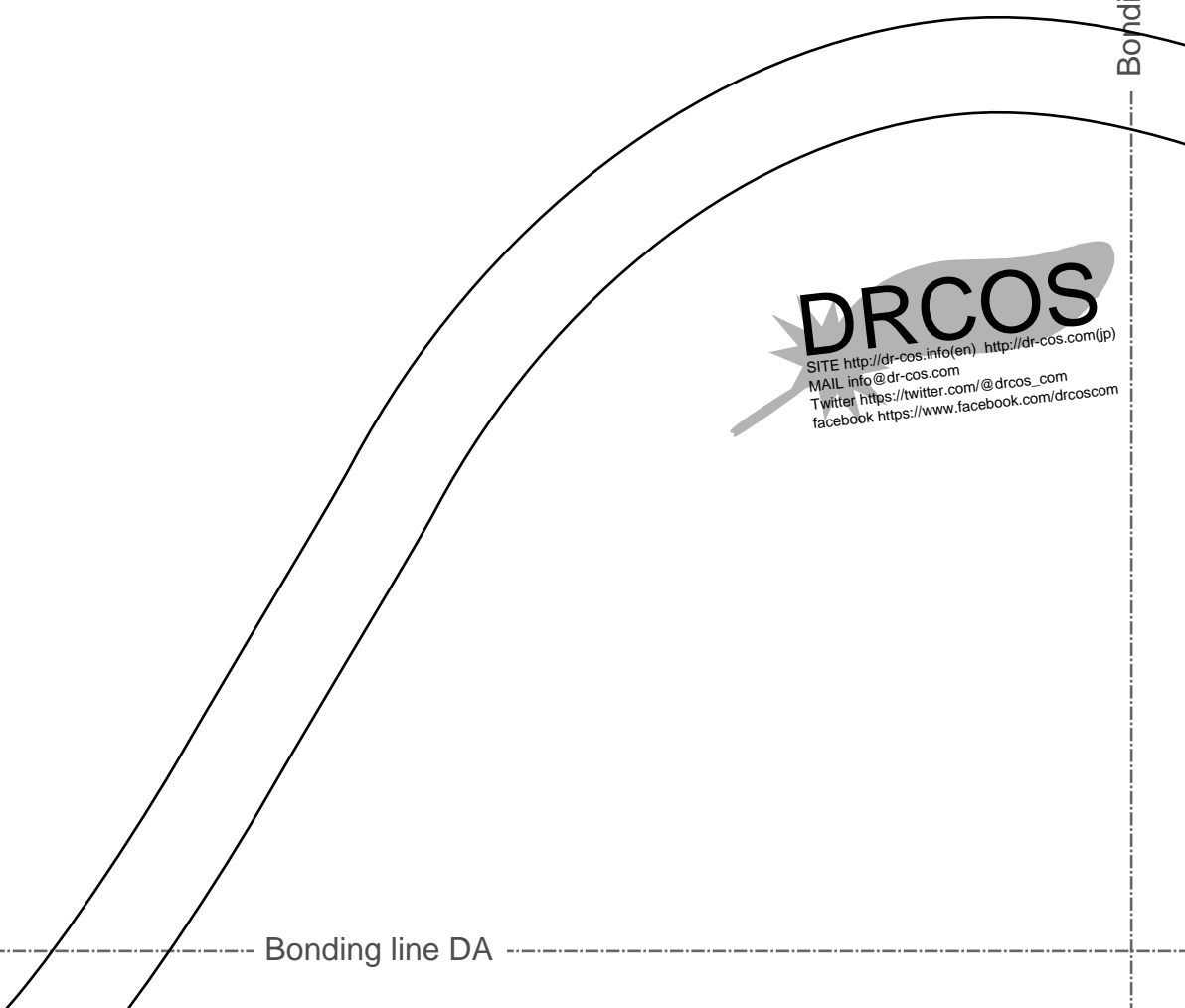
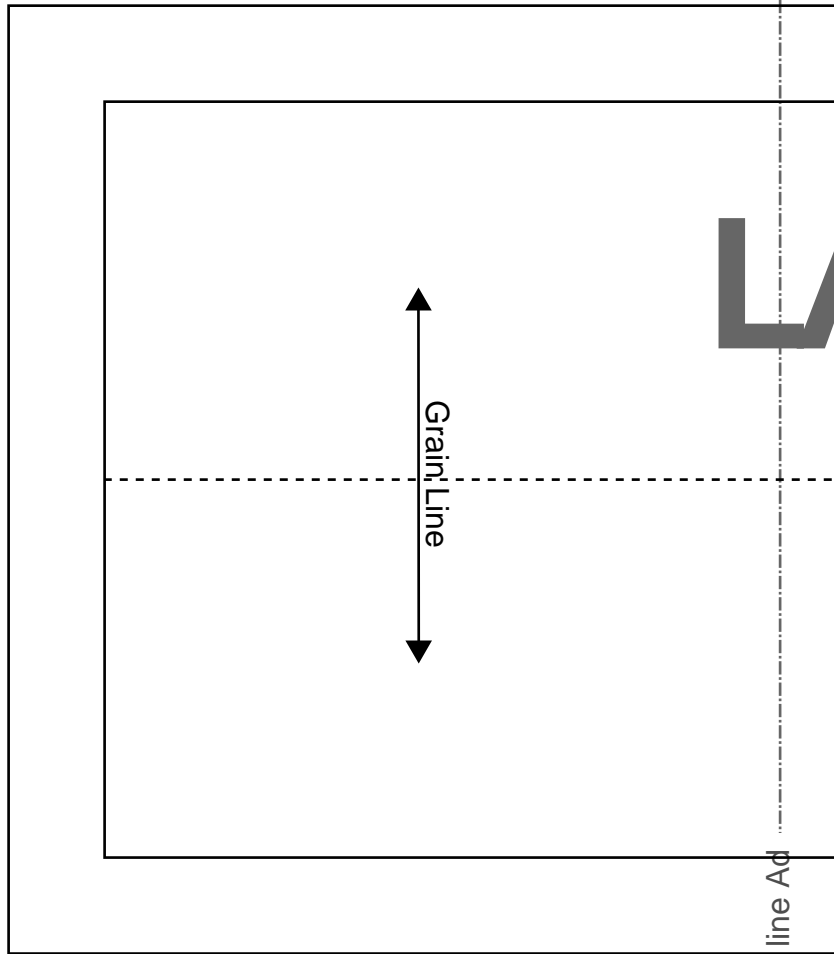
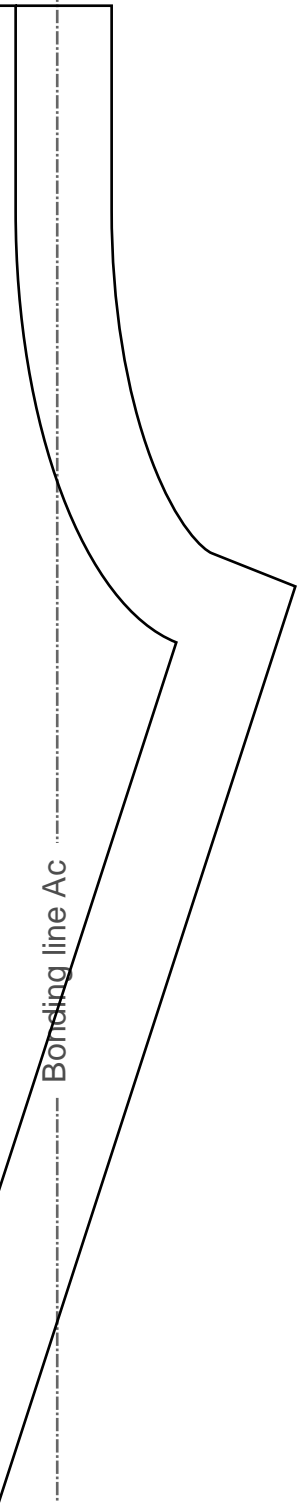
Bonding line Cc



SITE <http://dr->
MAIL info@dr-
Twitter <https://>
facebook <https://>

nce 1/2in.

Bonding line CC



DRCOS
SITE [http://dr-cos.info\(en\)](http://dr-cos.info(en)) [http://dr-cos.com\(jp\)](http://dr-cos.com(jp))
MAIL info@dr-cos.com
Twitter https://twitter.com/@drcos_com
facebook <https://www.facebook.com/drcoscom>

Bonding line DA

Bonding line DA

Front

Bonding line Bc

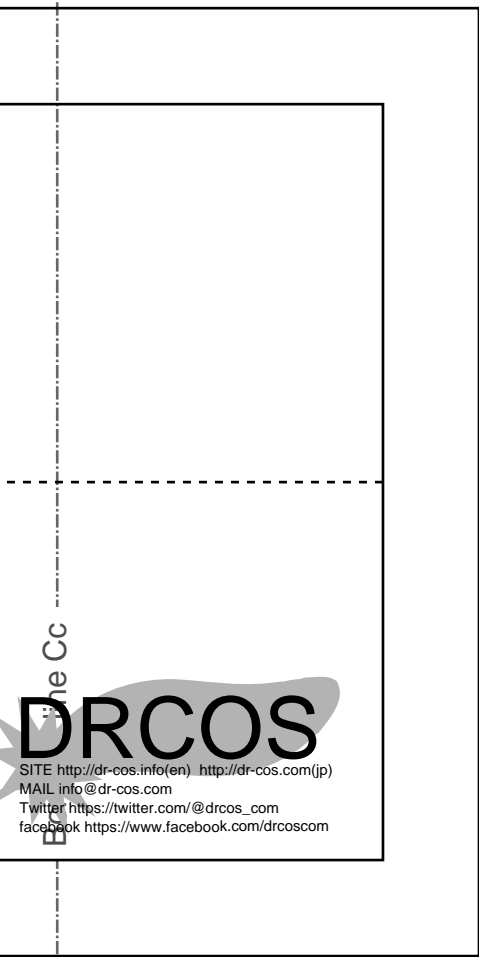
LADIE

Bonding line Bd

Blous
SI
two

Bonding line DB

Bonding line DB



The Cc
DRCOS
SITE [http://dr-cos.info\(en\)](http://dr-cos.info(en)) [http://dr-cos.com\(jp\)](http://dr-cos.com(jp))
MAIL info@dr-cos.com
Twitter https://twitter.com/drcos_com
facebook <https://www.facebook.com/drcoscom>

Bonding line Cd

Bonding line DC

LADIES' size M

Blousonhoodie
Cuffs
two sheets
Fusible interlining
two sheets



Seam allowance 1/2in.

Bonding line Ad

Bonding line Ae

S
om(jp)
oscom

Bonding line EA

Bonding line EA

Back

Bonding line Bq

IES'S M
size

ousonhoodie
Sleeve
two sheets

Bonding line Be

Bonding line EB

Bonding line EB

Bonding line Cd



Bonding line Ce

Seam allowance 1/2in.

Bonding line EC