

[Home](#)

[Back to Blousonhoodie page](#)



Pocket position



Bonding line Aa

Baste

Bonding line AA

Bonding line AA

fastener

Blousonhodie
Front Body
two sheets



Bonding line Ba

Bonding line AB

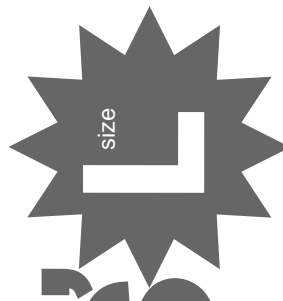
Bonding line AB

DRCOS
 SITE <http://dr-cos.info/en> [http://dr-cos.com\(jp\)](http://dr-cos.com(jp))
 MAIL info@dr-cos.com
 Twitter <https://twitter.com/dr-cos>
 facebook <https://www.facebook.com/dr-cos.com>

Bonding line Ca

DRCOS

SITE <http://dr-cos.info/en> [http://dr-cos.com\(jp\)](http://dr-cos.com(jp))
 MAIL info@dr-cos.com
 Twitter <https://twitter.com/dr-cos>
 facebook <https://www.facebook.com/dr-cos.com>

DIE'S  **L**
 size

Bonding line AC

Bonding line AC

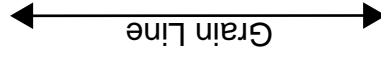
LAD

Bonding line Da

Bonding line AD

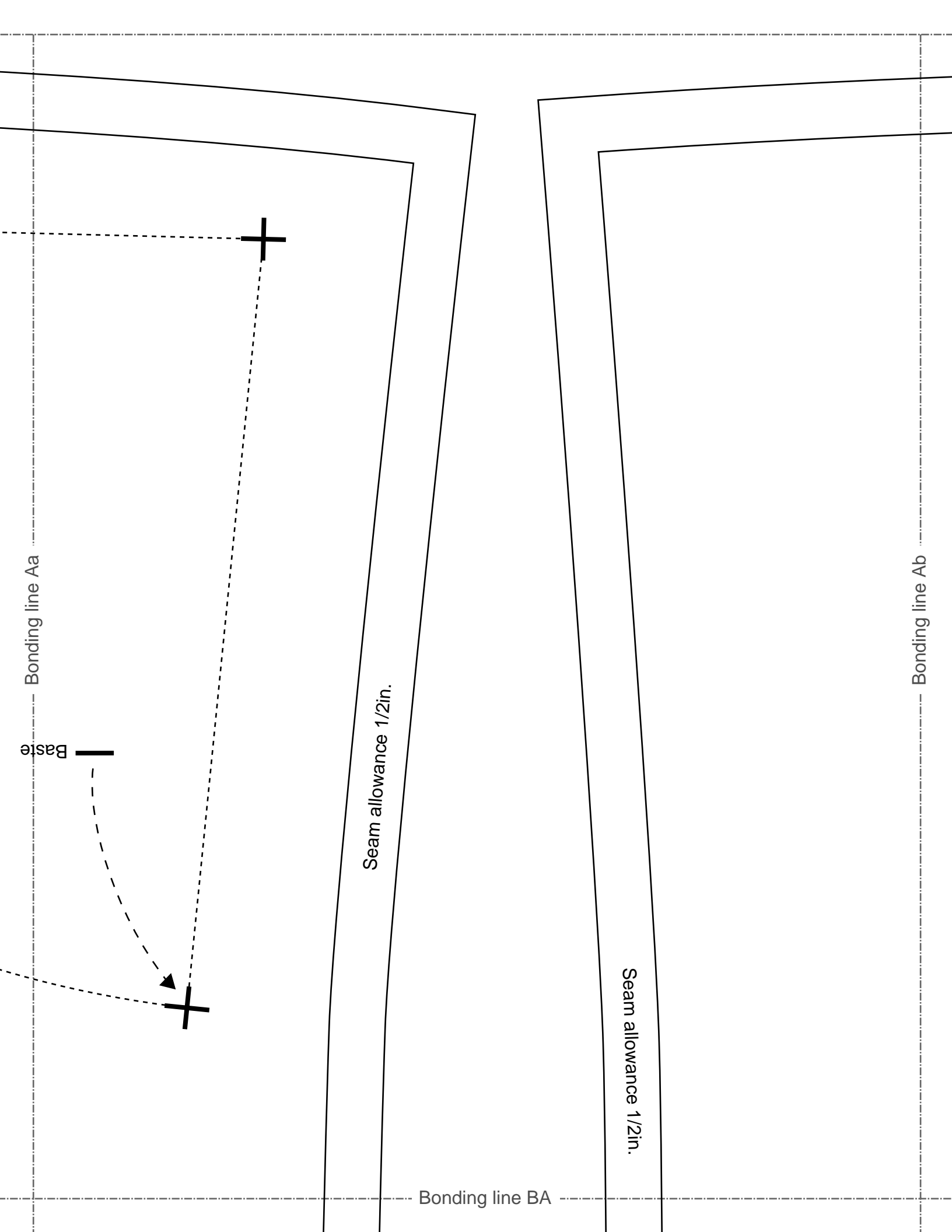
Bonding line AD

Seam allowance 1/2in.



Bonding line Ea

Bonding line AE



Bonding line Aa

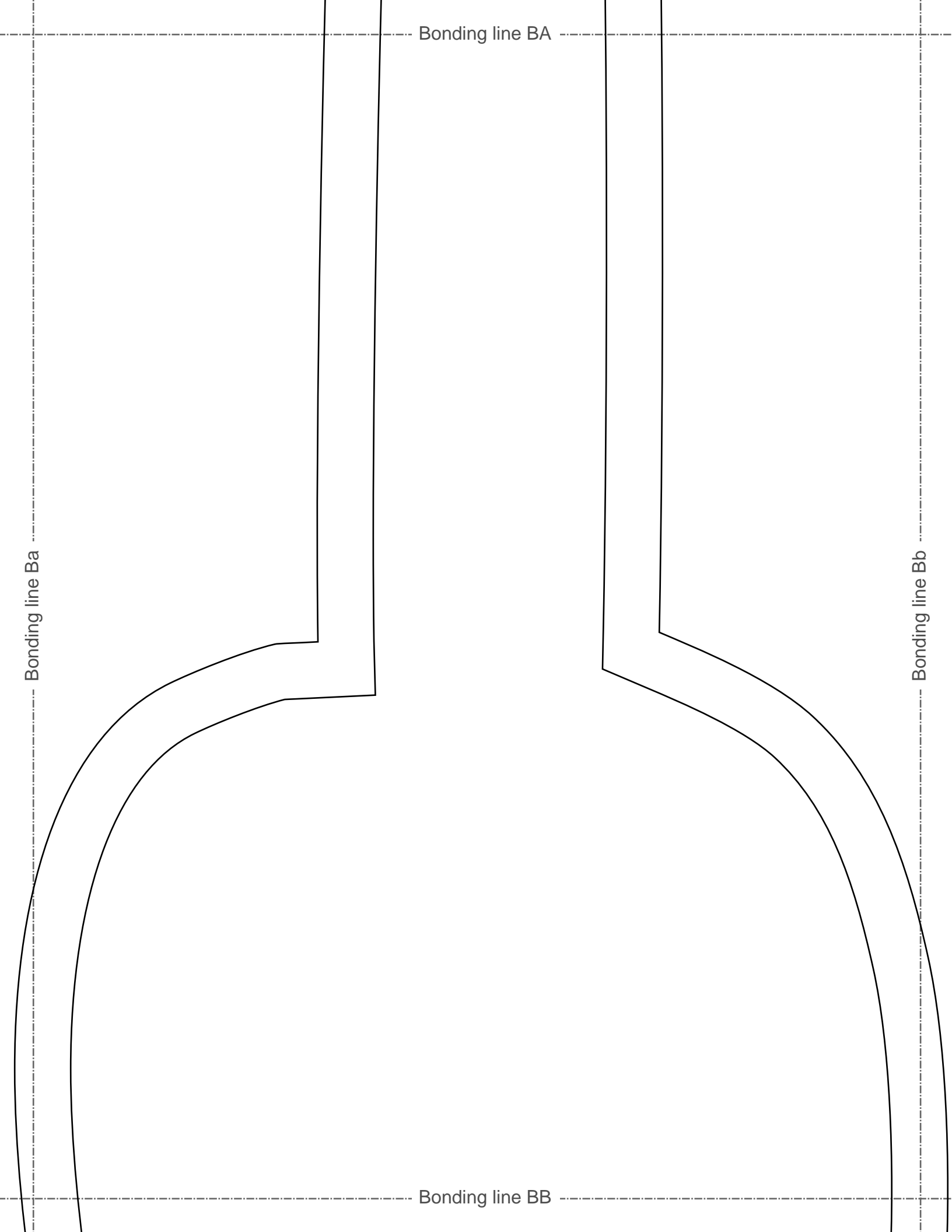
Baste

Seam allowance 1/2in.

Bonding line BA

Seam allowance 1/2in.

Bonding line Ab



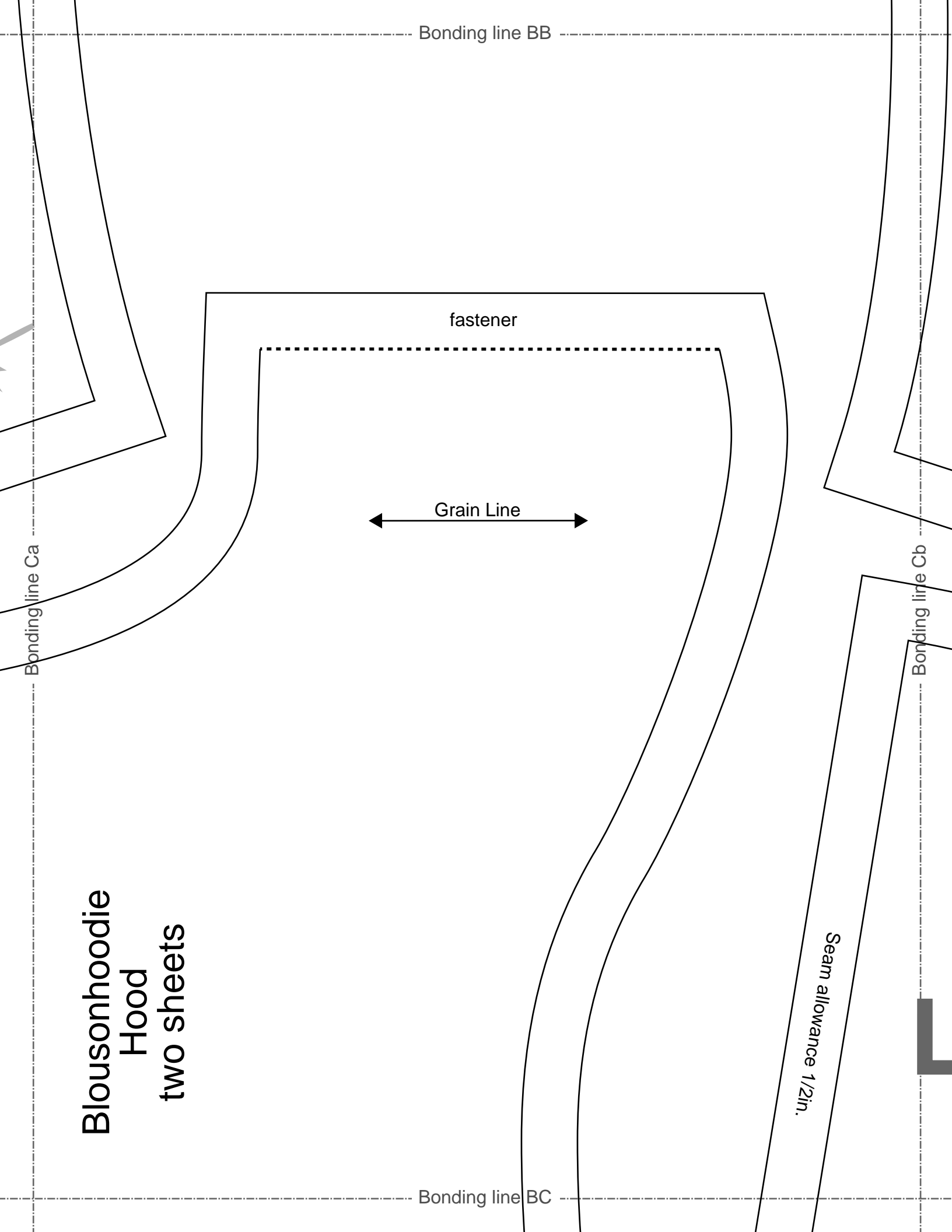
Bonding line BA

Bonding line Ba

Bonding line Bb

Bonding line BB

**Blousonhoodie
Hood
two sheets**



Bonding line BB

fastener

Grain Line

Bonding line Ca

Bonding line Cb

Seam allowance 1/2in.

Bonding line BC

Bonding line BC

Seam allowance 1/2in.

DRC

SITE <http://dr-cos.info/en>
MAIL info@dr-cos.com
Twitter <https://twitter.com/>
facebook <https://www.face>

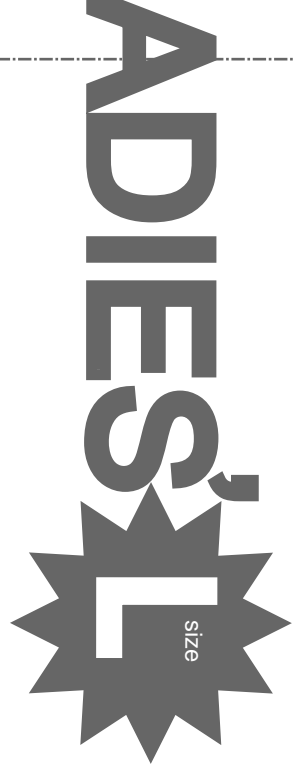
Bonding line Da

Bonding line Db

Bonding line BD



Bonding line BD



Blousonhoodie
Sleeve
two sheets


Bonding line Ea

Bonding line Eb

Bonding line BE

DRCOS
SITE <http://dr-cos.info/en> <http://dr-cos.com/pt>
MAIL info@dr-cos.com
Twitter <https://twitter.com/dr-cos.com>
Facebook <https://www.facebook.com/drcoscom>

Grain Line



Bonding line Ab

Bonding line Ac

Bonding line CA

Bonding line CA

Blousonhodie
Back Body
one sheets



LADIES **L**
size



Bonding line Bb

Bonding line Bc

Bonding line CB

Bonding line CB

Bonding line Cb

Bonding line Cc

LADIES'  size

**Blousonhoodie
Pocket**

two sheets

Bonding line CC



C

Pocket two sheets

Bonding line CC

Grain Line

RCOS

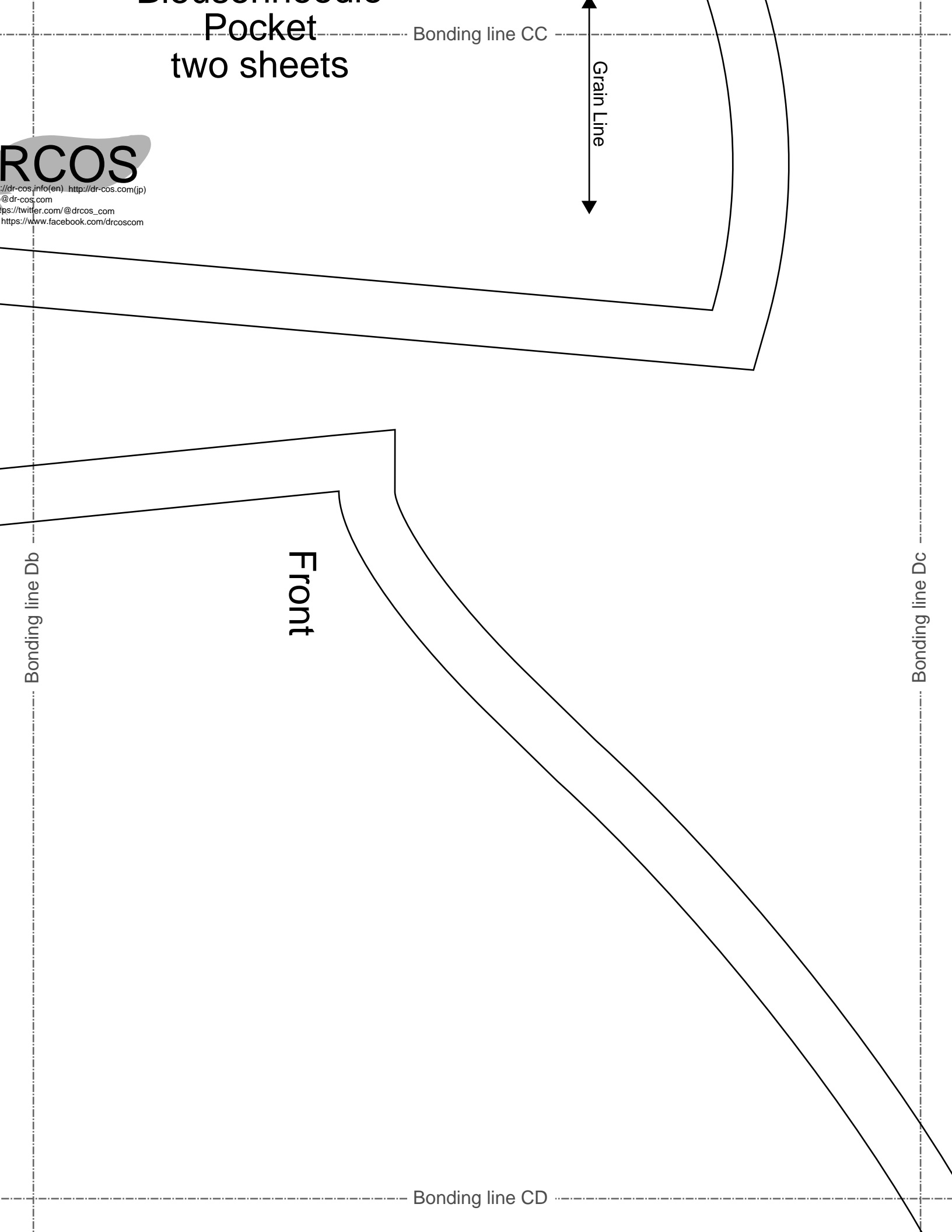
[http://dr-cos.info\(en\)](http://dr-cos.info(en)) [http://dr-cos.com\(jp\)](http://dr-cos.com(jp))
[@dr-cos.com](mailto:info@dr-cos.com)
https://twitter.com/drcos_com
<https://www.facebook.com/drcoscom>

Bonding line Db

Front

Bonding line Dc

Bonding line CD



Bonding line CD



Back

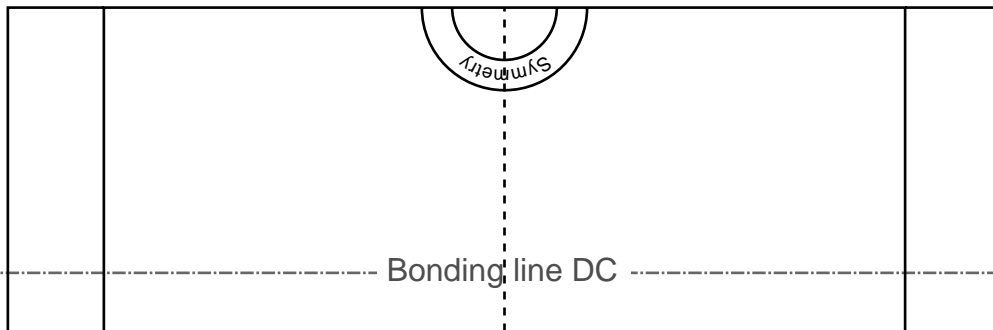
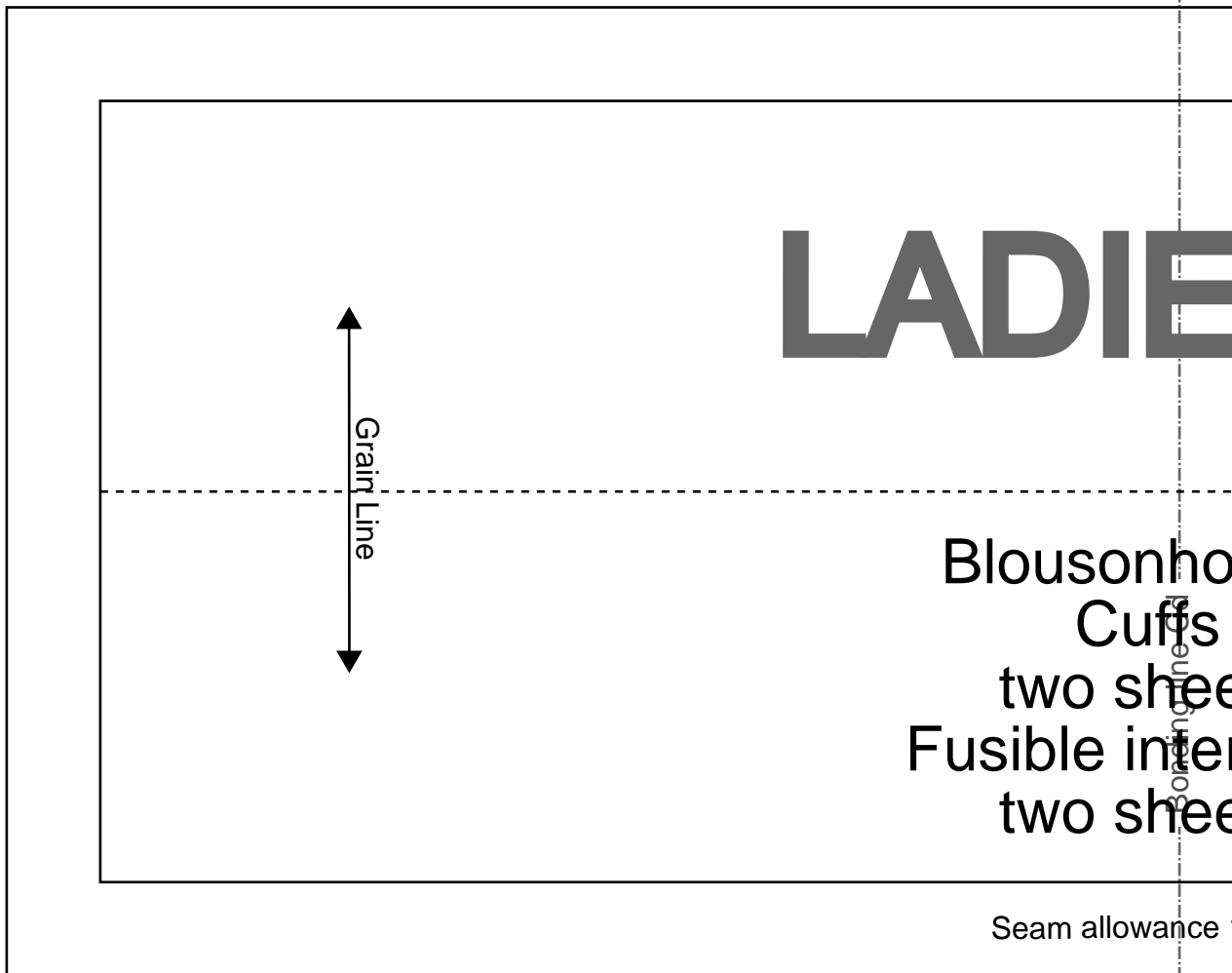
Bonding line Eb

Bonding line Ec

Bonding line CE

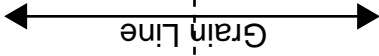
Bonding line DB

Bonding line Cc



Bonding line Dc

Bonding line DC



Grain Line

Bonding line Dd



Blousonhoodie
Hem rib
one sheets

Seam allowance 1/2in.

Bonding line Dd

size

Bonding line Ec

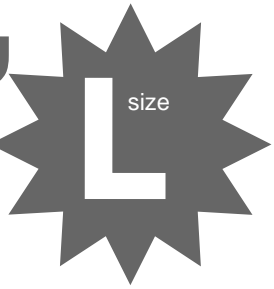
Bonding line Dd




 SITE <http://dr-cos.info/en> <http://dr-cos.com/jp>
 MAIL info@dr-cos.com
 Twitter https://twitter.com/dr-cos_com
 facebook <https://www.facebook.com/drcoscom>

Bonding line DE

Bonding line Ed

IES'  size

onhoodie
uffs
sheets
interlining
sheets



SITE <http://dr-cos.info/en> <http://dr-cos.com/jp>
MAIL info@dr-cos.com
Twitter https://twitter.com/@drcos_com
facebook <https://www.facebook.com/drcoscom>

owance 1/2in.