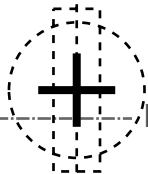
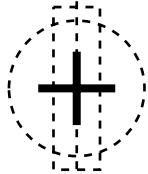
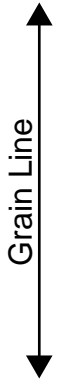
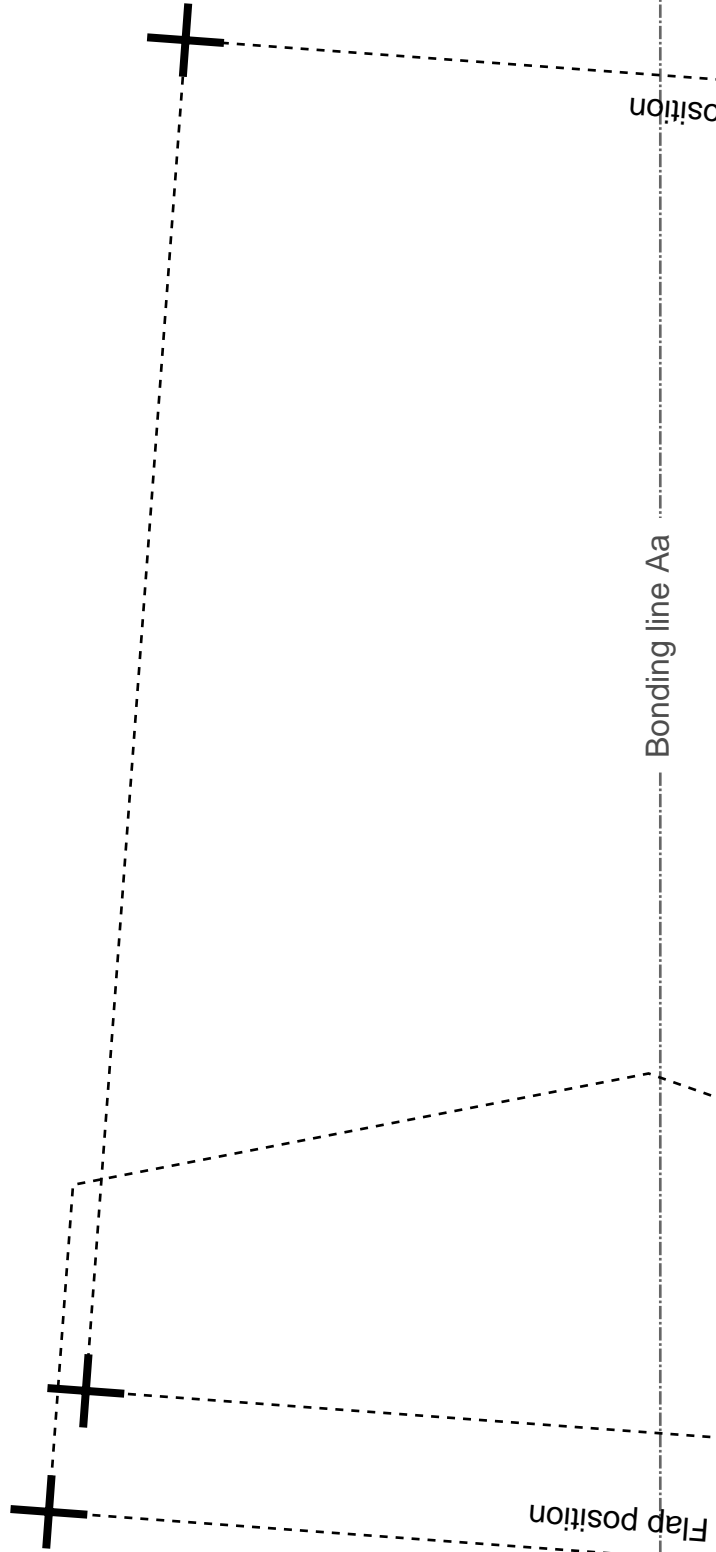


[Home](#)

[Back to Jacketshortcoat page](#)



Bonding line AA



Position

Bonding line Aa

Flap position

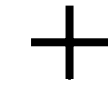
hortcoat
Body
sheets



Bonding line Ba

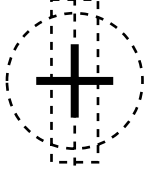
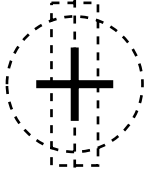
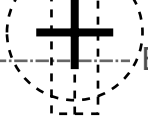
Pocket position

Flap position



Bonding line AA

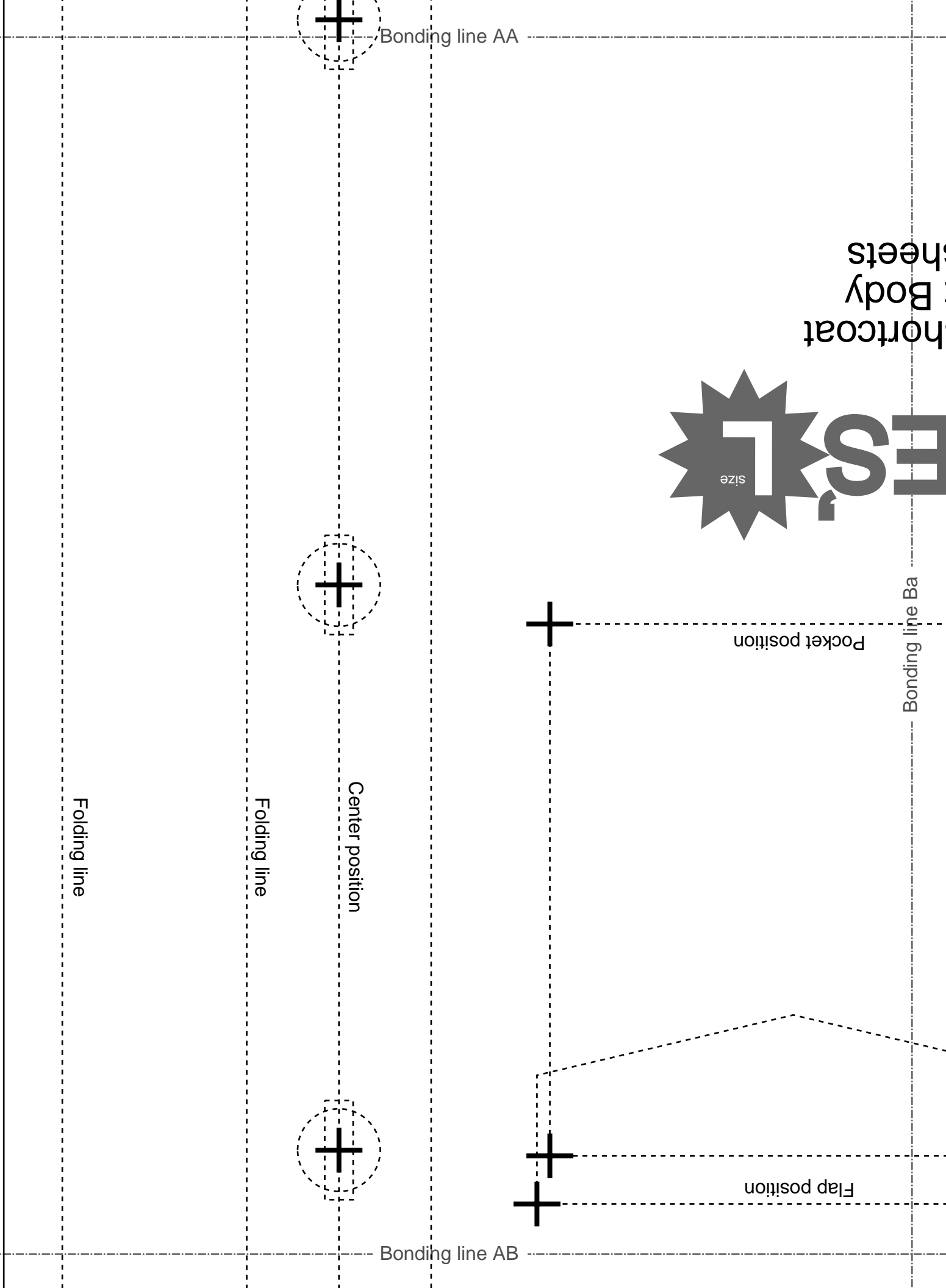
Bonding line AB



Center position

Folding line

Folding line



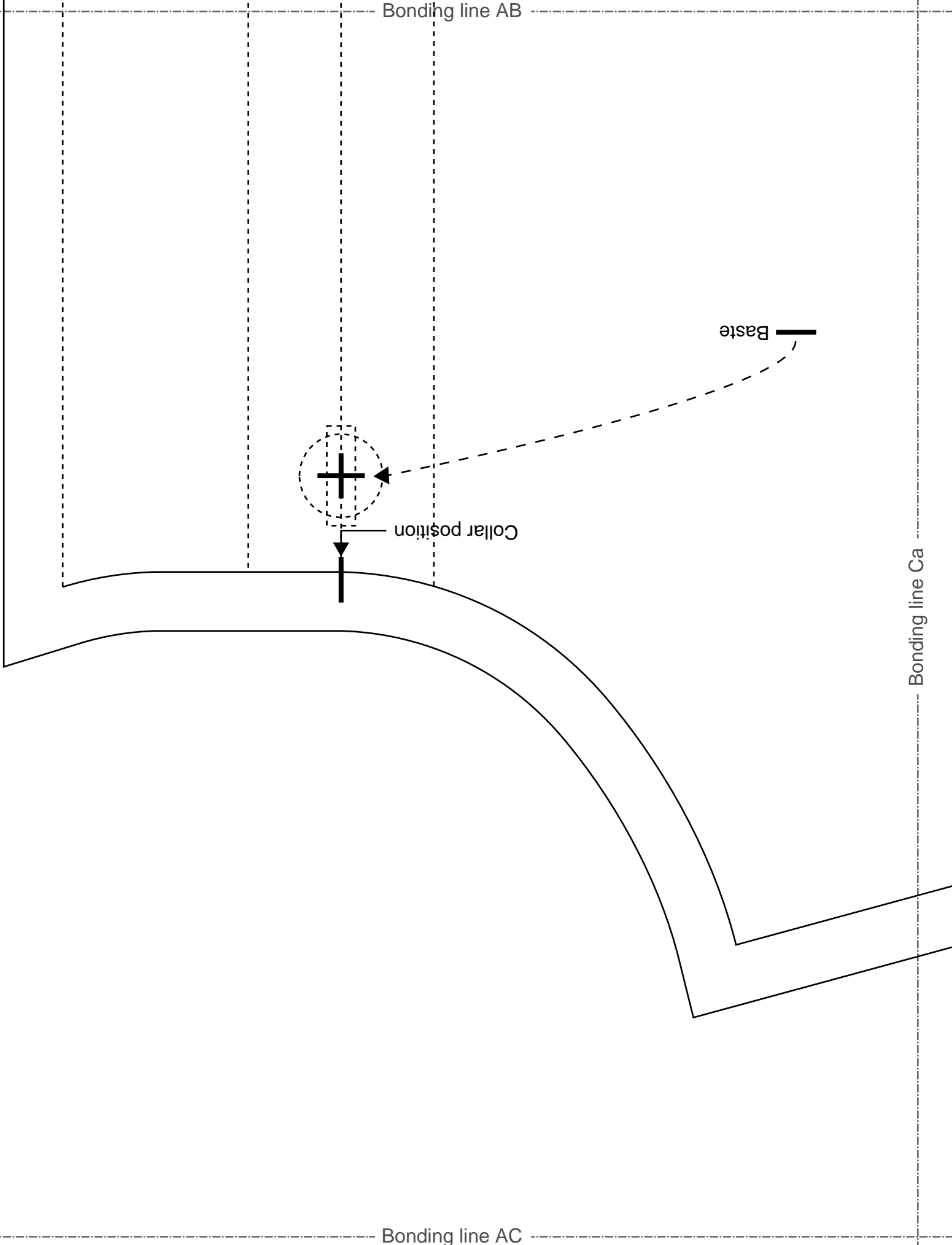
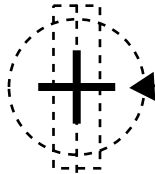
Bonding line AB

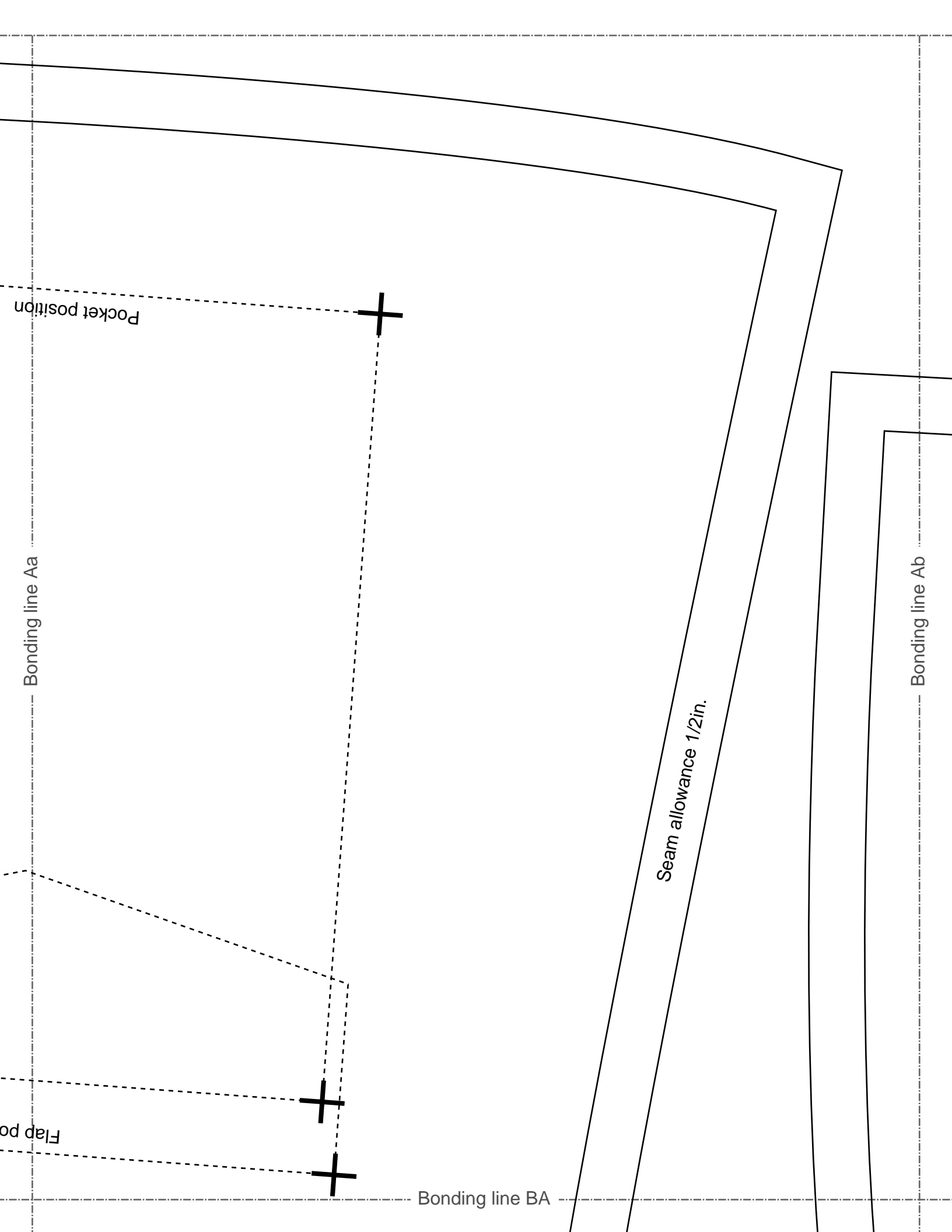
Baste

Collar position

Bonding line Ca

Bonding line AC





Pocket position

Bonding line Aa

Flap position

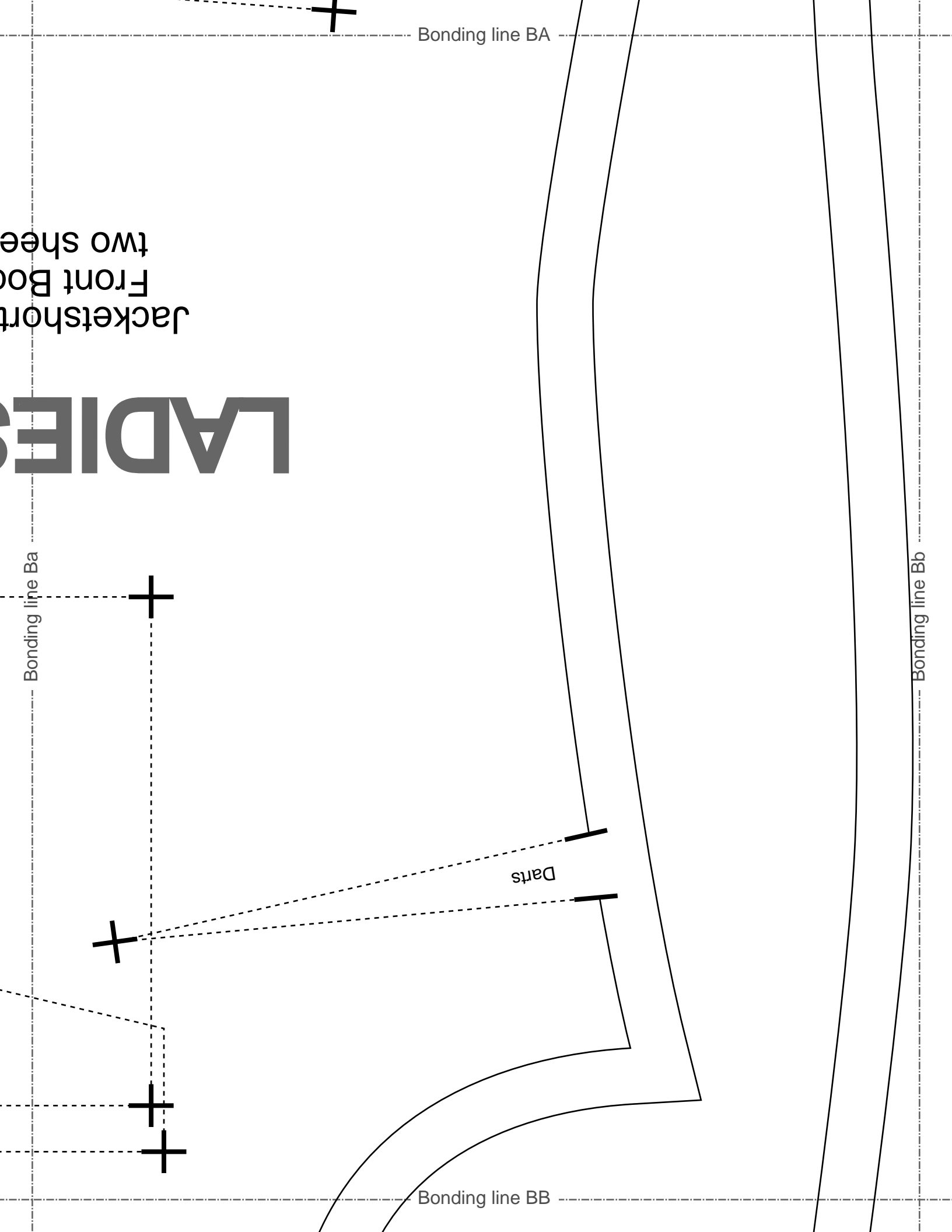
Bonding line BA

Seam allowance 1/2in.

Bonding line Ab

Jacketshort
Front Bod
two shee

LADIES



Bonding line BB

Bonding line Ca

Bonding line Cb

DRCOS
 SITE <http://dr-cos.info/en> <http://dr-cos.com/jp>
 MAIL info@dr-cos.com
 TWITTER https://twitter.com/dr-cos_com
 FACEBOOK <https://www.facebook.com/drcoscom>

Bonding line BC

Bonding line Ab

Bonding line Ac

Bonding line CA

DRCOS

SITE [http://dr-cos.info\(en\)](http://dr-cos.info(en)) [http://dr-cos.com\(jp\)](http://dr-cos.com(jp))
MAIL info@dr-cos.com
Twitter [@drcos_com](https://twitter.com/@drcos_com)
facebook <https://www.facebook.com/drcoscom>

Bonding line CA

LADIES'  size

Jacketshortcoat
Back Body
two sheets

Bonding line Bb

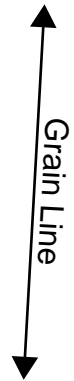
Bonding line Bc

Bonding line CB

Bonding line CB

Bonding line Cb

Bonding line Cc



Bonding line CC

Bonding line Ac

Bonding line Ad

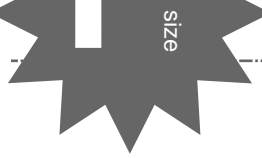
Grain Line

LADIES' J
size

Bonding line DA

Jacketshortcoat
Collar
two sheets
Fusible interlining
one sheets

Seam allowance 1/2in.



Bonding line DA

Bonding line Bd

Bonding line Bc

Bonding line DB

Bonding line Cc

Seam allowance 1/2in.

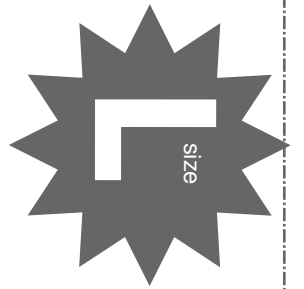
Bonding line DB

Bonding line Cd

Seam allowance 1/2in.

Grain Line

Jacketshortcoat
Pocket
two sheets



Bonding line DC

DRCOS

SITE <http://dr-cos.info/en> <http://dr-cos.com/jp>
MAIL info@dr-cos.com
Twitter https://twitter.com/drcos_com
facebook <https://www.facebook.com/drcoscom>

Bonding line Ad

Bonding line Ae

Bonding line EA

LADIE

Bonding line EA

LADIE

Jacketsh
Slee
two sh

Bonding line Bd

Bonding line Be

Bonding line EB

Bonding line EB

Seam

Bonding line Cd



 SITE <http://dr-cos.info/en> <http://dr-cos.com/jp>

 MAIL info@dr-cos.com

 Twitter https://twitter.com/drcos_com

 facebook <https://www.facebook.com/drcoscom>

Bonding line Ce

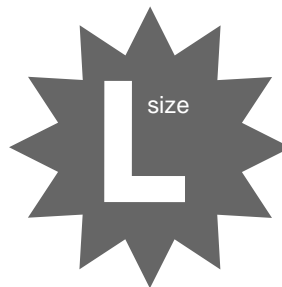
DRCOS

SITE <http://dr-cos.info/en> <http://dr-cos.com/jp>

 MAIL info@dr-cos.com

 Twitter https://twitter.com/drcos_com

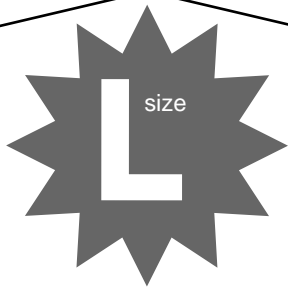
 facebook <https://www.facebook.com/drcoscom>



Jacketshortcoat
Breast pocket
two sheets

Seam allowance 1/2in.

Bonding line EC



Jacketshortcoat
Breast flap
two sheets

Seam allowance 1/2in.

Bonding line Ae

Bonding line Af



Bonding line FA



Bonding line FA

Shortsleeve
Sleeve
no sheets

Bonding line Be



Bonding line Bf

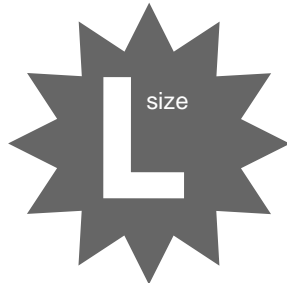
Bonding line FB

Bonding line FB

Seam allowance 1/2in.

Bonding line Ce

Bonding line Cf



Jacketshortcoat
Flap
two sheets

Seam allowance 1/2in.

Bonding line FC