

[Home](#)  
[Back to Vest page](#)

**DRCOS**

SITE <http://dr-cos.info/en> <http://dr-cos.com/jp>  
MAIL [info@dr-cos.com](mailto:info@dr-cos.com)  
Twitter [https://twitter.com/drcos\\_com](https://twitter.com/drcos_com)  
facebook <https://www.facebook.com/drcoscom>

Seam allowance 1/2in.

Bonding line Aa



Vest  
Lining Fabric  
two sheets

50cm 10g 16 AA

vest  
Lining Fabric  
two sheets

Grain Line



Bonding line AB

Bonding line Ba

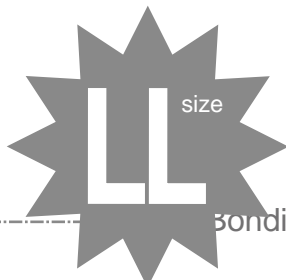
Bonding line AB

Bonding line Ca

Seam allowance 1/2in.

**DRCOS**

SITE <http://dr-cos.info/en> <http://dr-cos.com/jp>  
MAIL [info@dr-cos.com](mailto:info@dr-cos.com)  
Twitter [@drcos\\_com](https://twitter.com/@drcos_com)  
facebook <https://www.facebook.com/drcoscom>



size

Grain Line

Bonding line AC

**DRCOS**

SITE <http://dr-cos.info/en> <http://dr-cos.com/jp>  
MAIL [info@dr-cos.com](mailto:info@dr-cos.com)  
Twitter [@drcos\\_com](https://twitter.com/@drcos_com)  
facebook <https://www.facebook.com/drcoscom>

Bonding line AC

rain Line

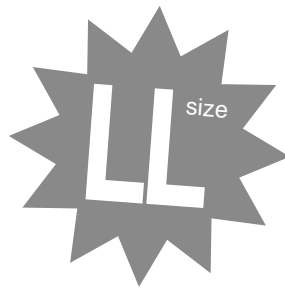
Vest  
Pocket  
two sheets

**DRCOS**

SITE [http://dr-cos.info\(en\)](http://dr-cos.info(en)) [http://dr-cos.com\(jp\)](http://dr-cos.com(jp))  
MAIL [info@dr-cos.com](mailto:info@dr-cos.com)  
Twitter [https://twitter.com/drcos\\_com](https://twitter.com/drcos_com)  
facebook <https://www.facebook.com/drcoscom>

Seam allowance 1/2in.

Grain Line



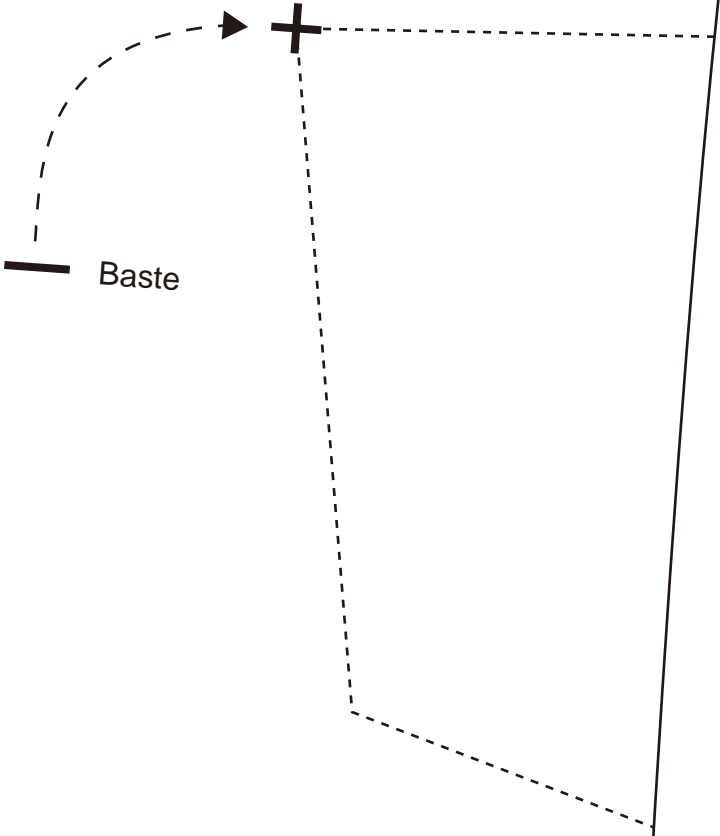
Vest  
Front Body Side  
two sheets

Bonding line AD

Bonding line Da

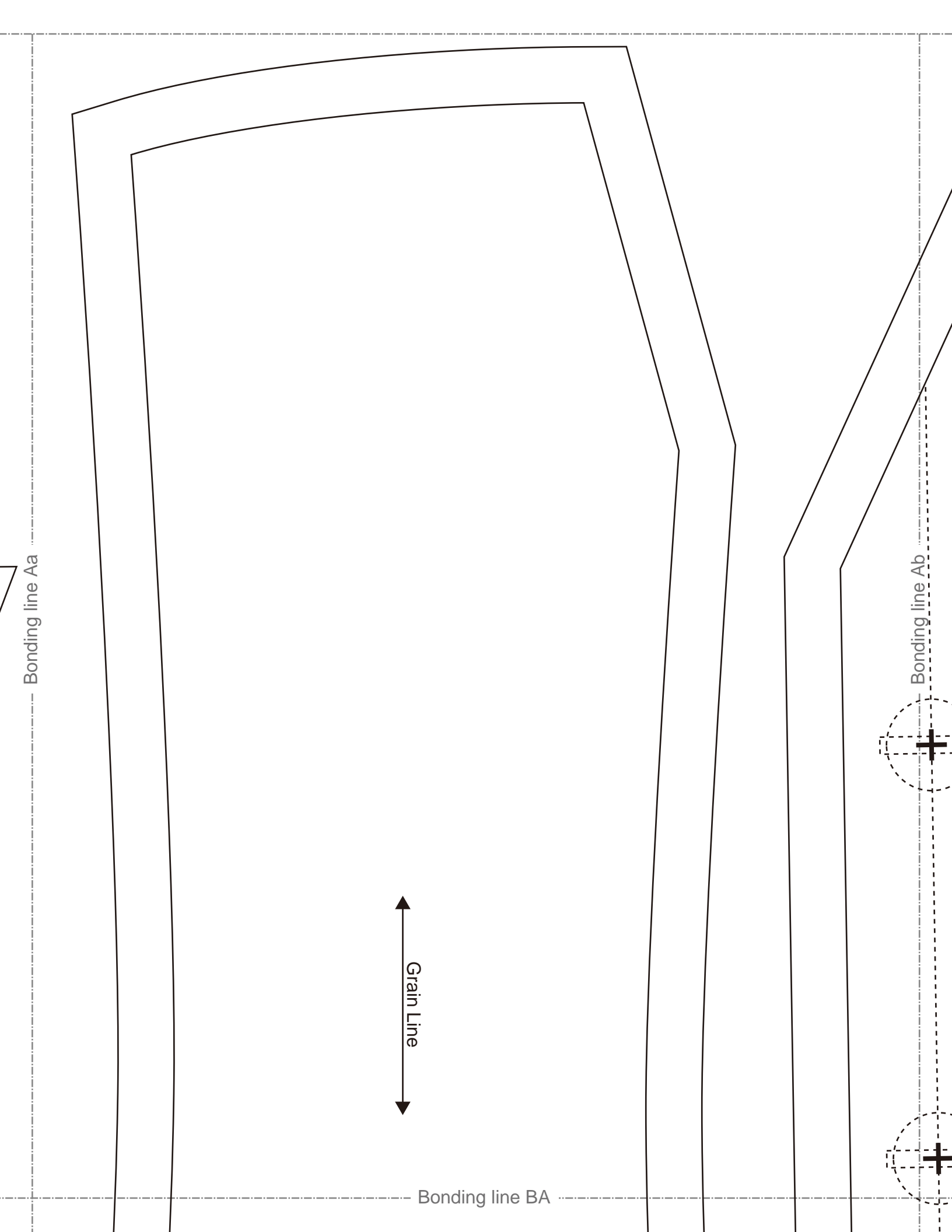
Front Body Side  
two sheets  
Lining Fabric  
two sheets

Bonding line AD



Baste

Bonding line Ea



Bonding line BA

Bonding line Ba

Seam allowance 1/2in.

Bonding line Bb

Vest  
Back Body  
two sheets



Bonding line BB

position

Bonding line BB

Seam allowance 1/2in.

**DRCOS**  
 SITE <http://dr-cos.info/en> <http://dr-cos.com/jp>  
 MAIL [info@dr-cos.com](mailto:info@dr-cos.com)  
 Twitter [https://twitter.com/dr-cos\\_com](https://twitter.com/dr-cos_com)  
 facebook <https://www.facebook.com/drcoscom>

Facing Line

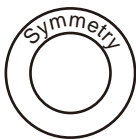
Bonding line Ca

Bonding line Cb

Seam allowance 1/2in.

**DRCOS**  
[dr-cos.com/jp](http://dr-cos.com/jp)  
[com](http://dr-cos.com)  
[m/drcoscom](http://dr-cos.com)

Grain Line



**Vest**  
**Taylor color**  
**one sheets**



Bonding line BC



Bonding line BC

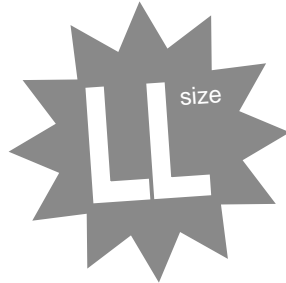
**DRCOS**

SITE <http://dr-cos.info/en> <http://dr-cos.com/jp>  
MAIL [info@dr-cos.com](mailto:info@dr-cos.com)  
Twitter [https://twitter.com/drcos\\_com](https://twitter.com/drcos_com)  
facebook <https://www.facebook.com/drcoscom>

Bonding line Da

Bonding line Db

Seam allowance 1/2in.



Vest  
Back Body Side  
two sheets  
Lining Fabric  
two sheets

Bonding line BD

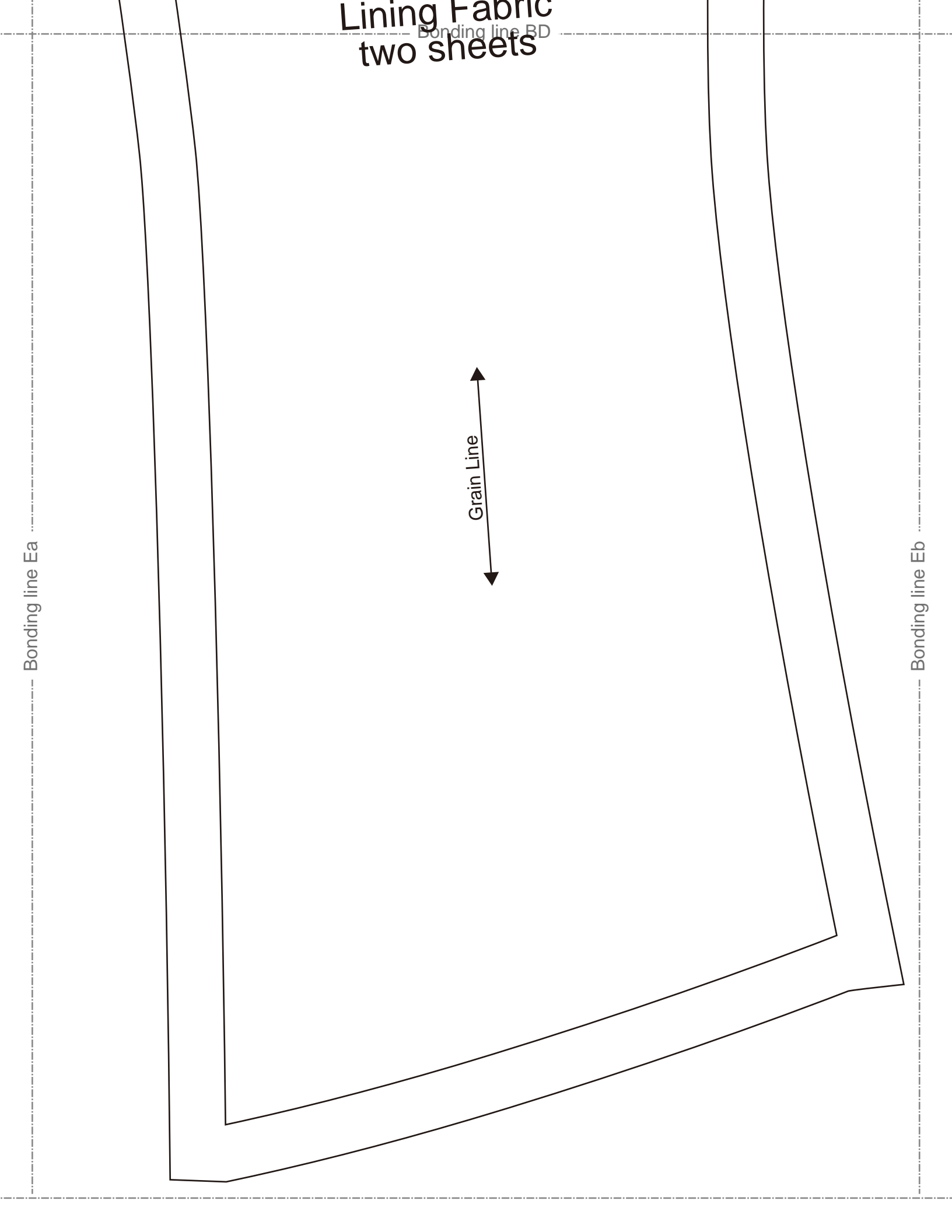
# Lining Fabric two sheets

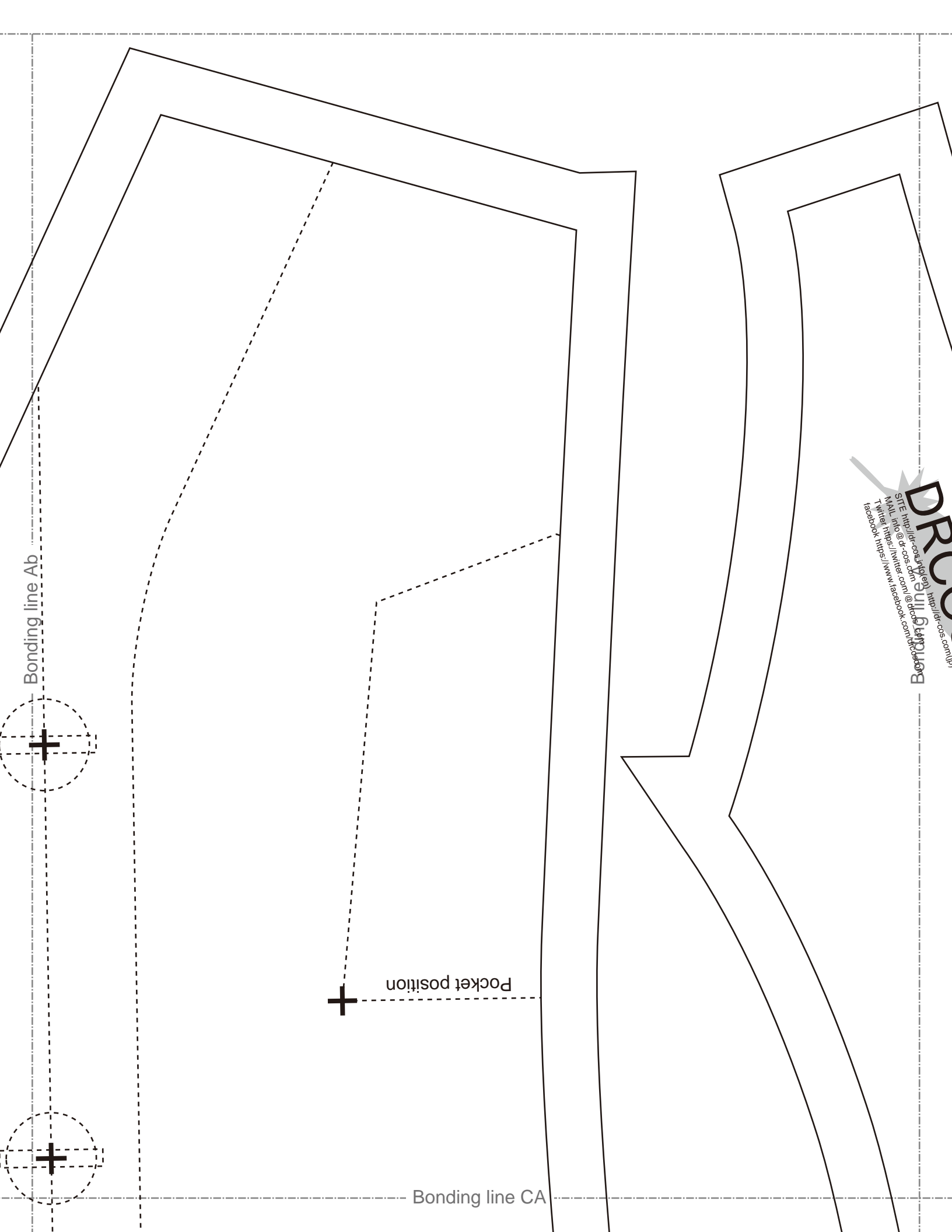
Bonding line BD

Bonding line Ea

Bonding line Eb

Grain Line





Bonding line Ab

Pocket position

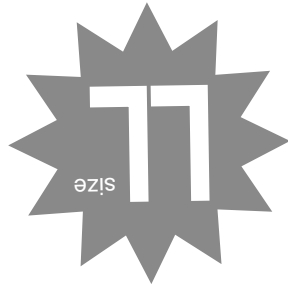
Bonding line CA

**DRUCK**  
BONDING LINE  
SITE: <http://druck.sps.sgg.hu/>  
MAIL: [info@druck.sps.sgg.hu](mailto:info@druck.sps.sgg.hu) | [ca@druck.sps.sgg.hu](mailto:ca@druck.sps.sgg.hu)  
Twitter: <https://www.facebook.com/druck.sps.sgg.hu>  
Facebook: <https://www.facebook.com/druck.sps.sgg.hu>

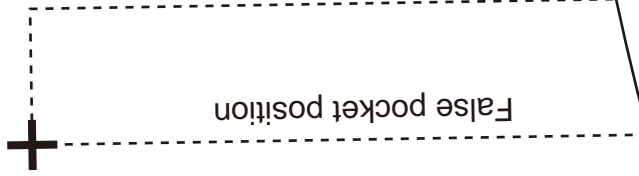
Bonding line CA



Vest  
Front Body  
two sheets



False pocket position



Bonding line Bb

Bonding line Bc

Bonding line CB

Facing Line

Button position



**DRCOS**  
SITE <http://drcos.info/en> <http://drcos.com/jp>  
MAIL [info@drcos.com](mailto:info@drcos.com)  
Twitter [https://twitter.com/drcos\\_com](https://twitter.com/drcos_com)  
facebook <https://www.facebook.com/drcoscom>

**DRCOS**  
SITE <http://drcos.info/en> <http://drcos.com/jp>  
MAIL [info@drcos.com](mailto:info@drcos.com)  
Twitter [https://twitter.com/drcos\\_com](https://twitter.com/drcos_com)  
facebook <https://www.facebook.com/drcoscom>

Bonding line CB

Bonding line Cc

Bonding line CC

Crease Line

Facing L

Baste

Label

Bonding line Cb

Vest  
False pocket  
two sheets



Size


Grain Line

Seam allowance 1/2in.

**DRCOS**  
SITE <http://drcos.info/en> <http://drcos.com/jp>  
MAIL [info@drcos.com](mailto:info@drcos.com)  
Twitter [https://twitter.com/drcos\\_com](https://twitter.com/drcos_com)  
facebook <https://www.facebook.com/drcoscom>

**Bonding line**  
**DRCOS**  
SITE <http://drcos.com>  
MAIL [info@drcos.com](mailto:info@drcos.com)  
Twitter <https://www.facebook.com/drcoscom>  
Facebook <https://www.facebook.com/drcoscom>

**DRCOS**  
SITE <http://drcos.com>  
MAIL [info@drcos.com](mailto:info@drcos.com)  
Twitter <https://www.facebook.com/drcoscom>  
Facebook <https://www.facebook.com/drcoscom>

Baste 

**LL** size

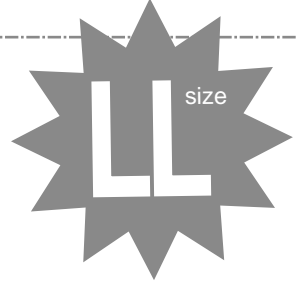
**Vest**  
**Body Facing**  
**to sheets**

Bonding line DA

Bonding line Ad

Bonding line Bc

# Vest Front Body Lining Fabric two sheets



Bonding line DA

Grain Line

Bonding line DB

Seam allowance 1/2in.

Grain Line

Vest  
Front Body  
two sheets

Seam allowance 1/2in.

Bonding line Bd

