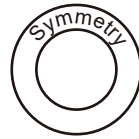


Symmetry

Children's



Train Skirt Front Body one sheets



Bonding line AA

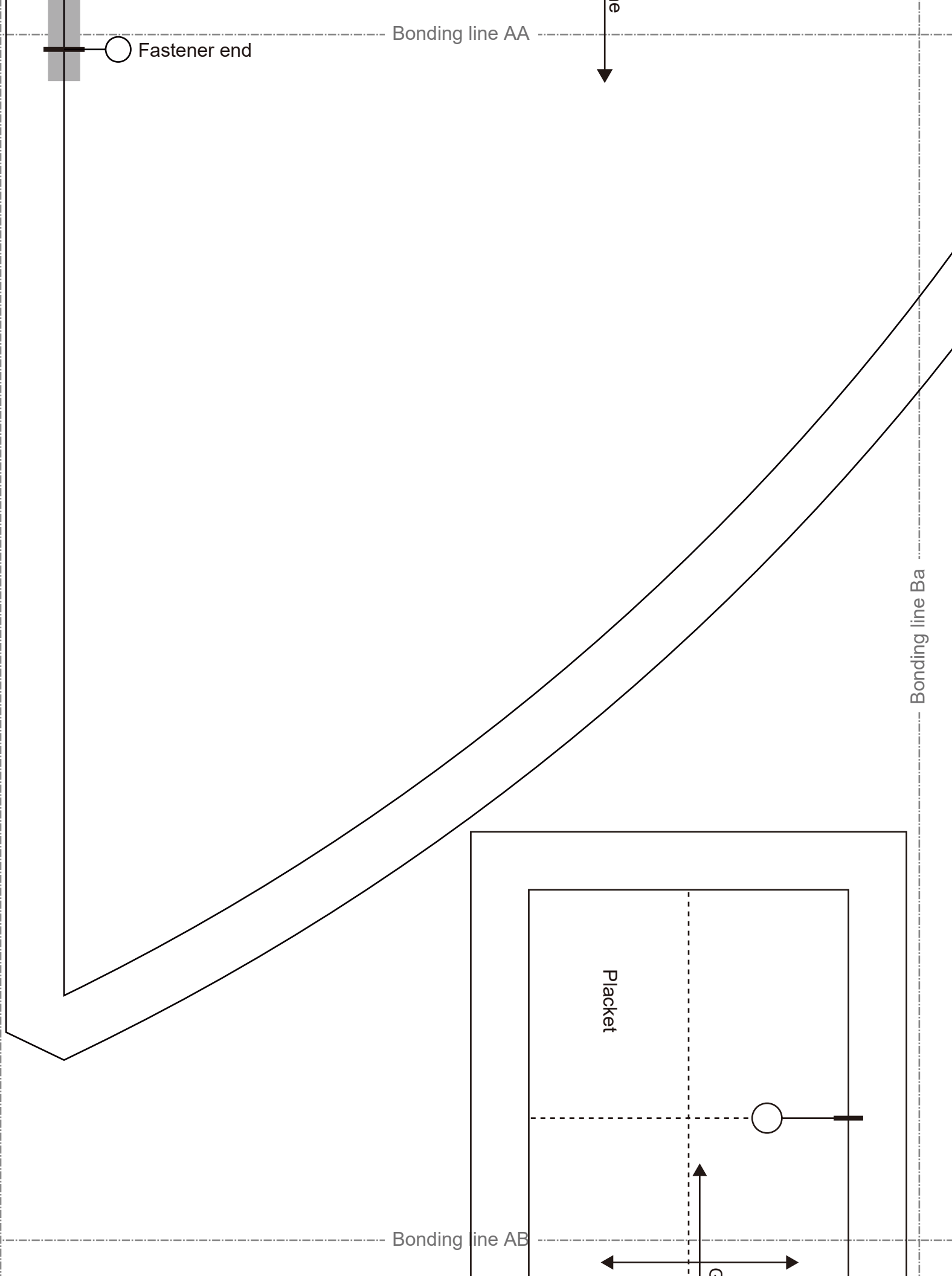
Fusible Stay tape

Grain Line

Bonding line AA

Fastener end





Fastener end

Bonding line AA

e

Bonding line Ba

Placket

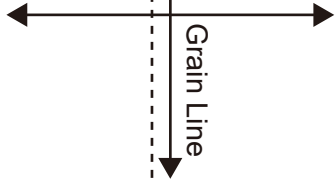
Bonding line AB

c

Bonding line Ca

**Train Skirt
Belt**
one sheets
Fusible interlining
one sheets

Grain Line



Seam allowance 1/2in.

Bonding line AB

Bonding line AC

Bonding line AC

Children's size 8

 **DRCOS**
 SITE <http://dr-cos.info/en> <http://dr-cos.com/jp>
 MAIL info@dr-cos.com
 T Witter <https://twitter.com/@drcos.com>
 facebook <https://www.facebook.com/drcos.com>

Bonding line AD

Bonding line Da



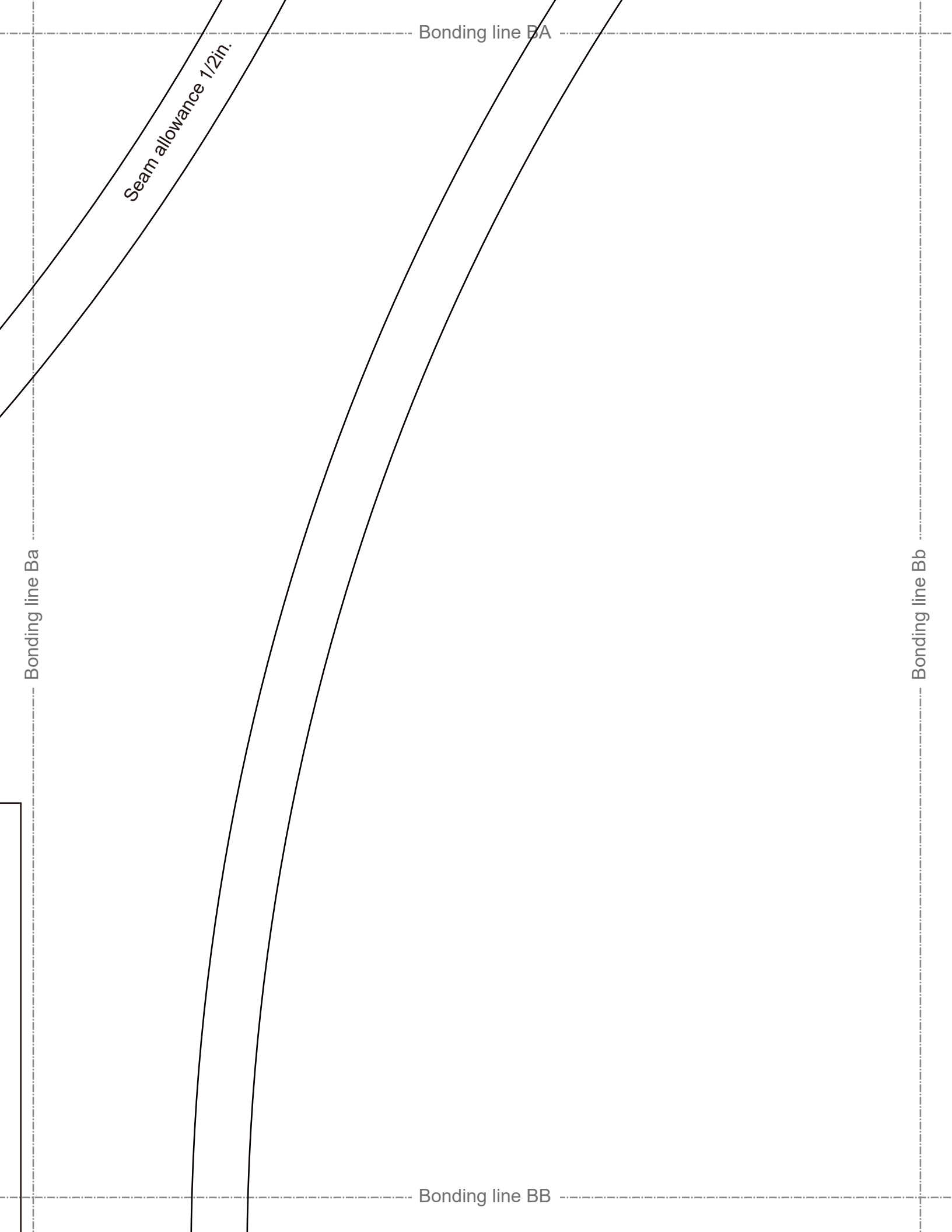
Bonding line Aa

Bonding line Ab

2in.

Bonding line BA

Seam allowance 1/2in.



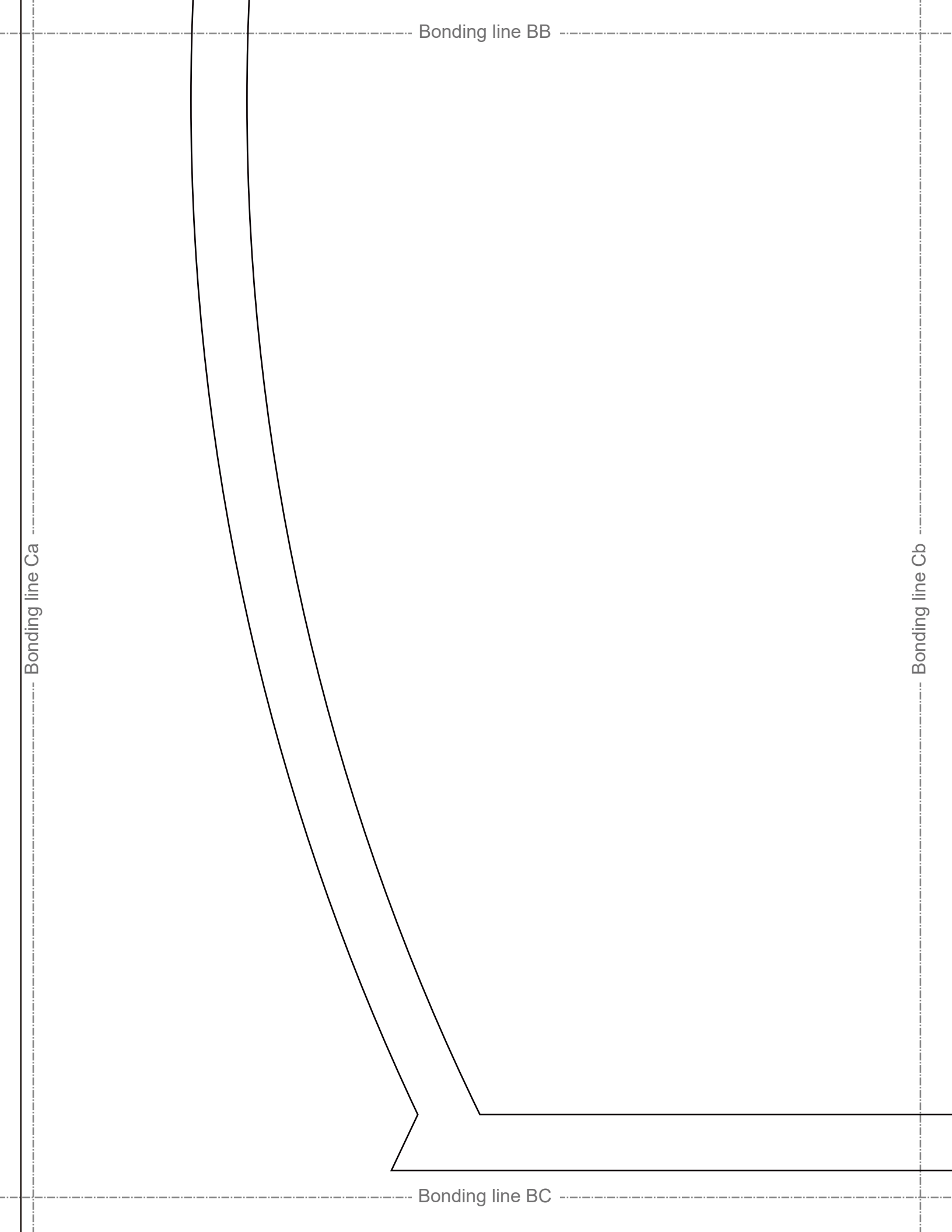
Seam allowance 1/2in.

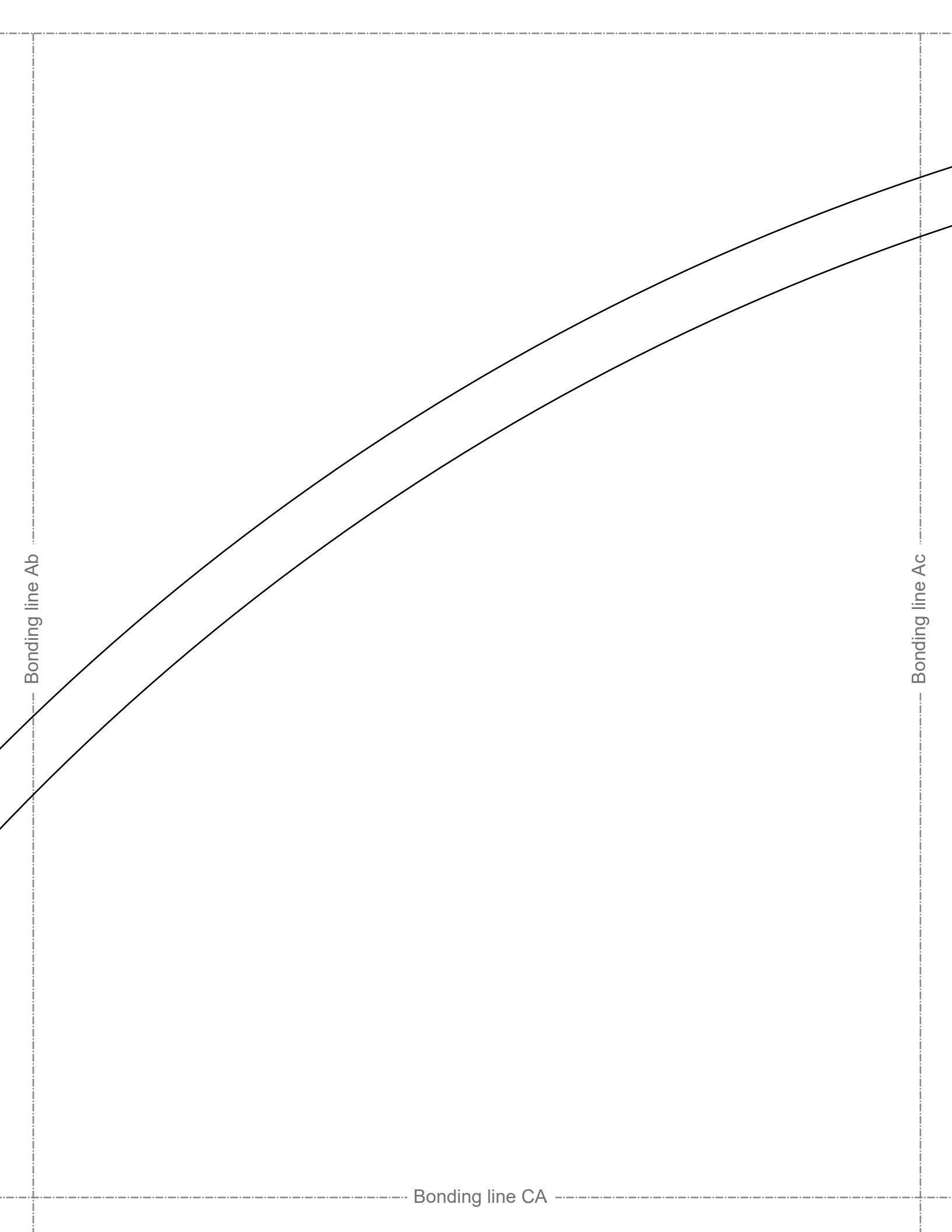
Bonding line BA

Bonding line Ba

Bonding line Bb

Bonding line BB





Bonding line CA



Bonding line Bb

Bonding line Bc

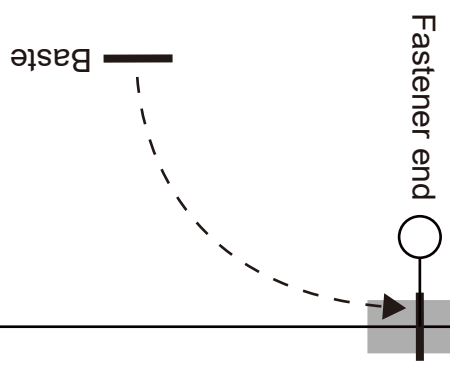
If it's not Symmetry, two sheets.

Train Skirt
 Back Body
 one sheets



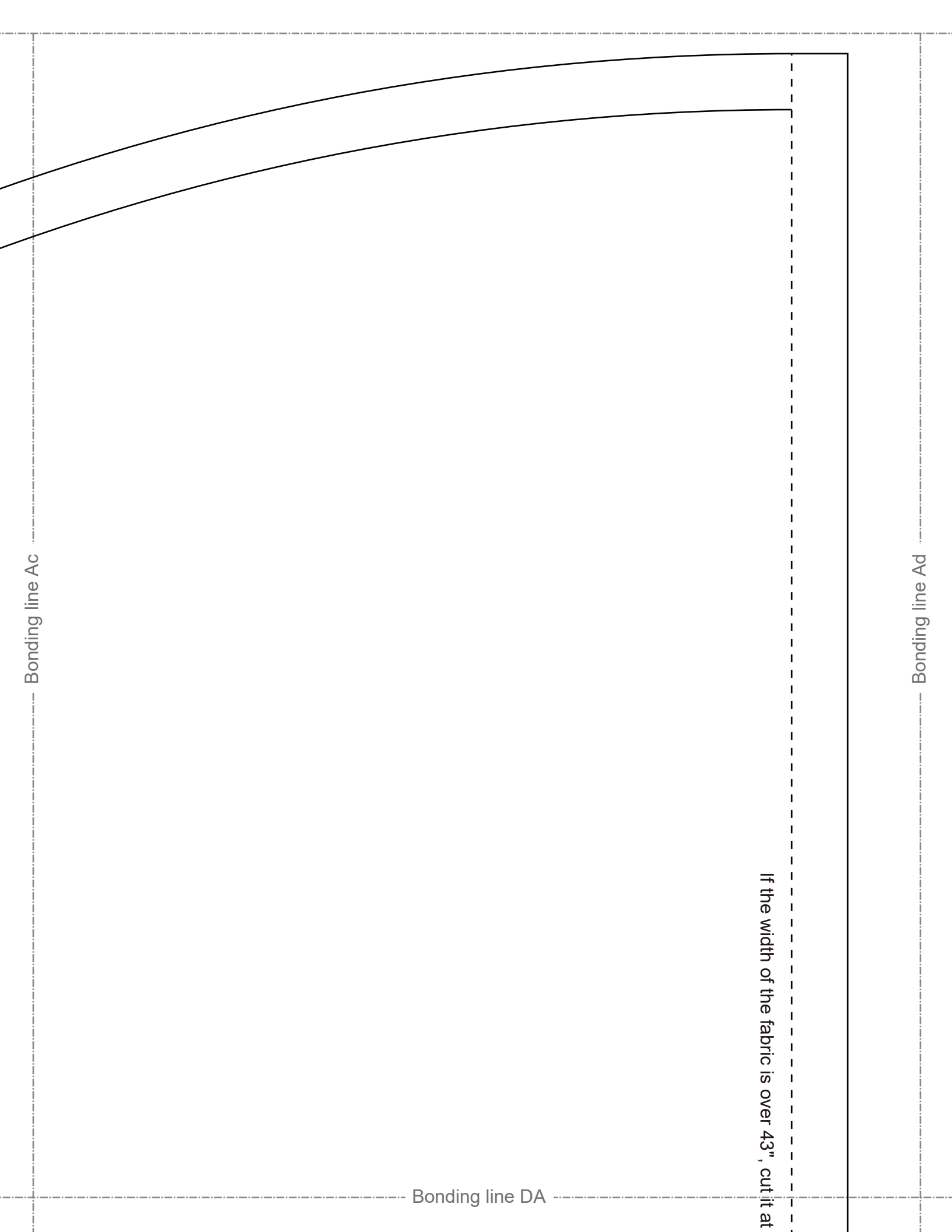
Bonding line Cb

Bonding line Cc



Visible Stay tape

Bonding line CC



Bonding line Ac

Bonding line Ad

Bonding line DA

If the width of the fabric is over 43", cut it at

Bonding line DA

cut it at this dotted line and take it out with Symmetry.



Bonding line Bc

Bonding line Bd

Bonding line DB

Bonding line DB

Bonding line Cc

Bonding line Cd

SITE <http://dr-cos.info/en> <http://dr-cos.com/jp>
MAIL info@dr-cos.com
Twitter <https://twitter.com/dr-cos>
facebook <https://www.facebook.com/drcoscom>

DRCOS

Fusible Sta

Bonding line DC