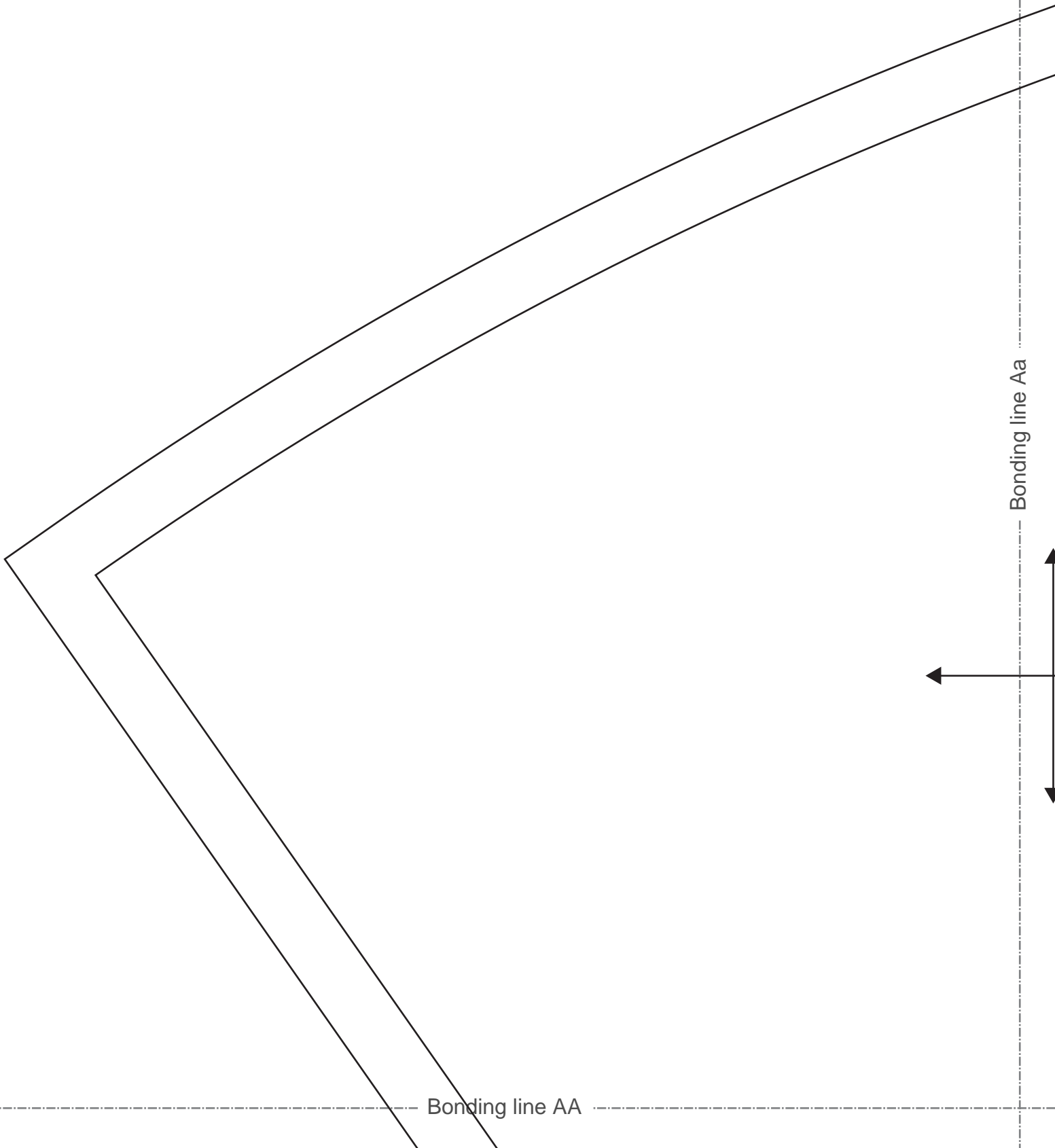


[Home](#)

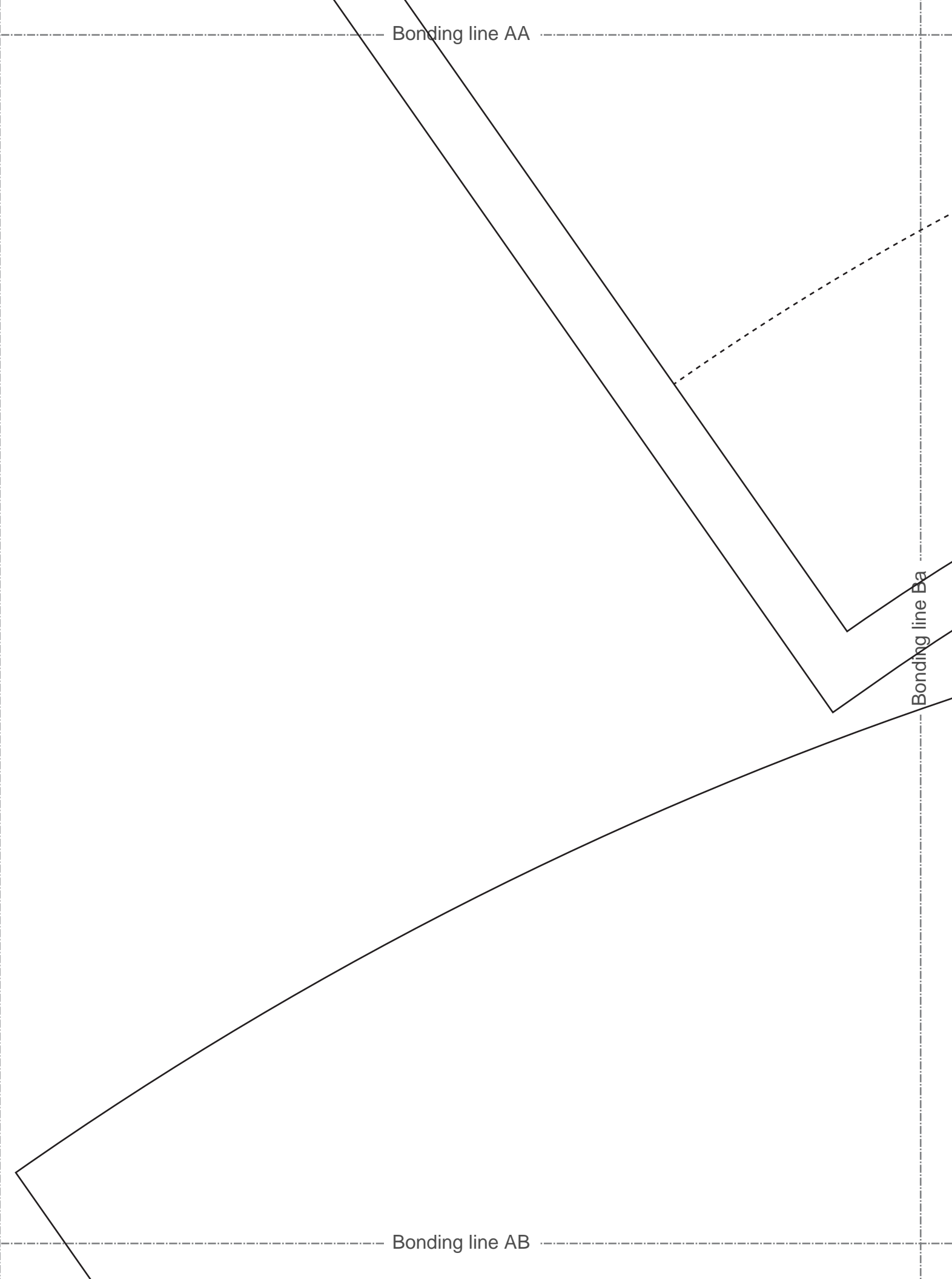
[Back to Tophat2 page](#)



Bonding line AA

Bonding line Ba

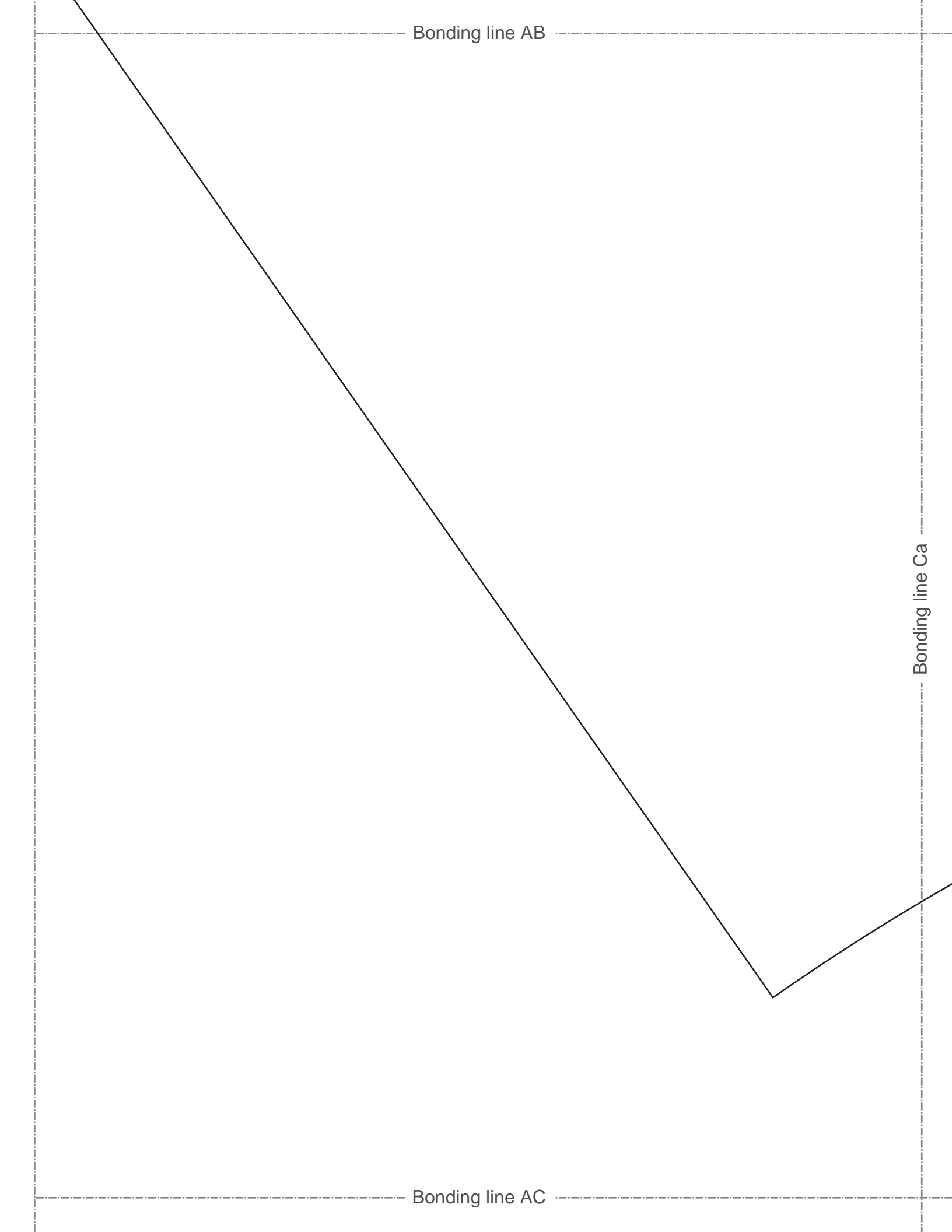
Bonding line AB

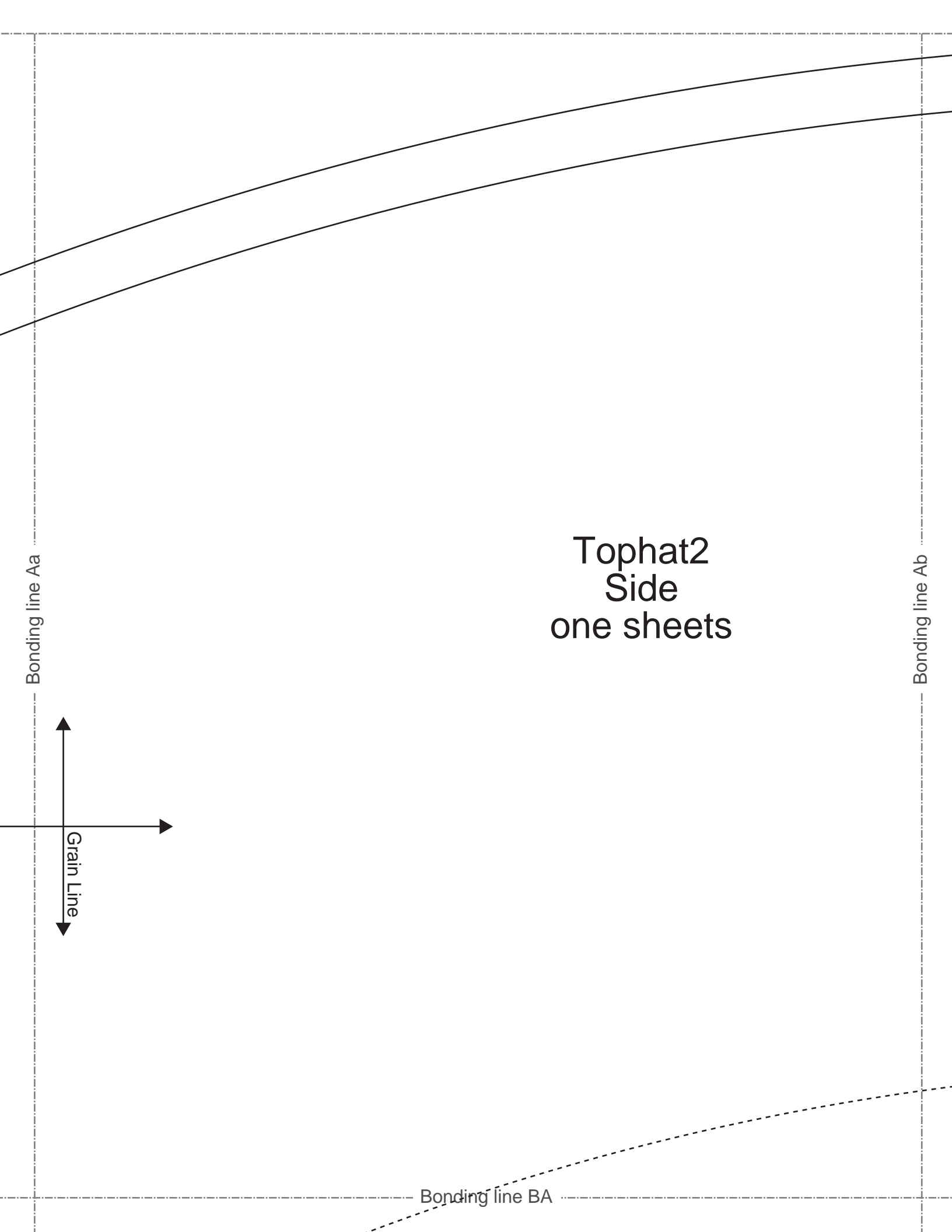


Bonding line AB

Bonding line Ca

Bonding line AC





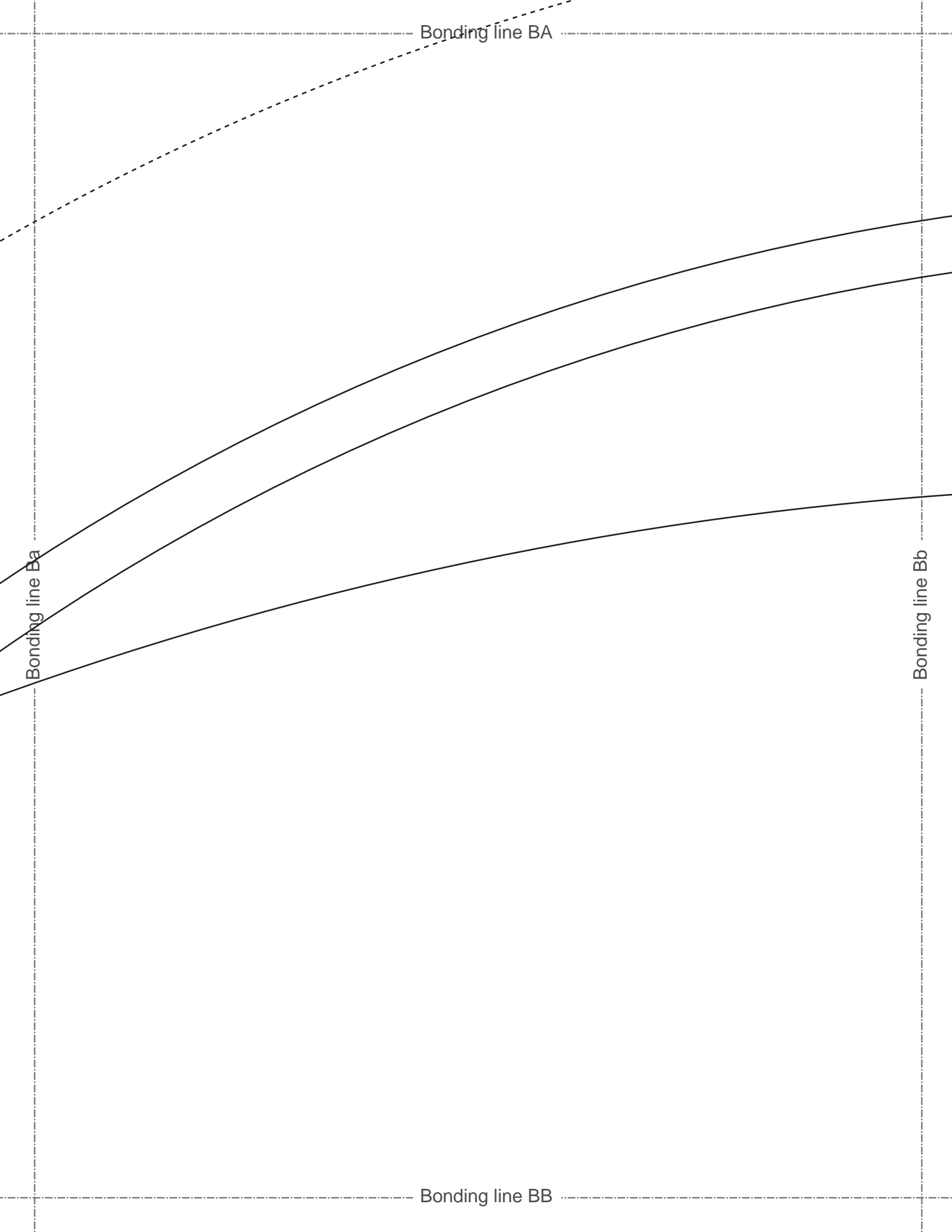
Tophat2  
Side  
one sheets

Bonding line Aa

Bonding line Ab

Bonding line BA

Grain Line

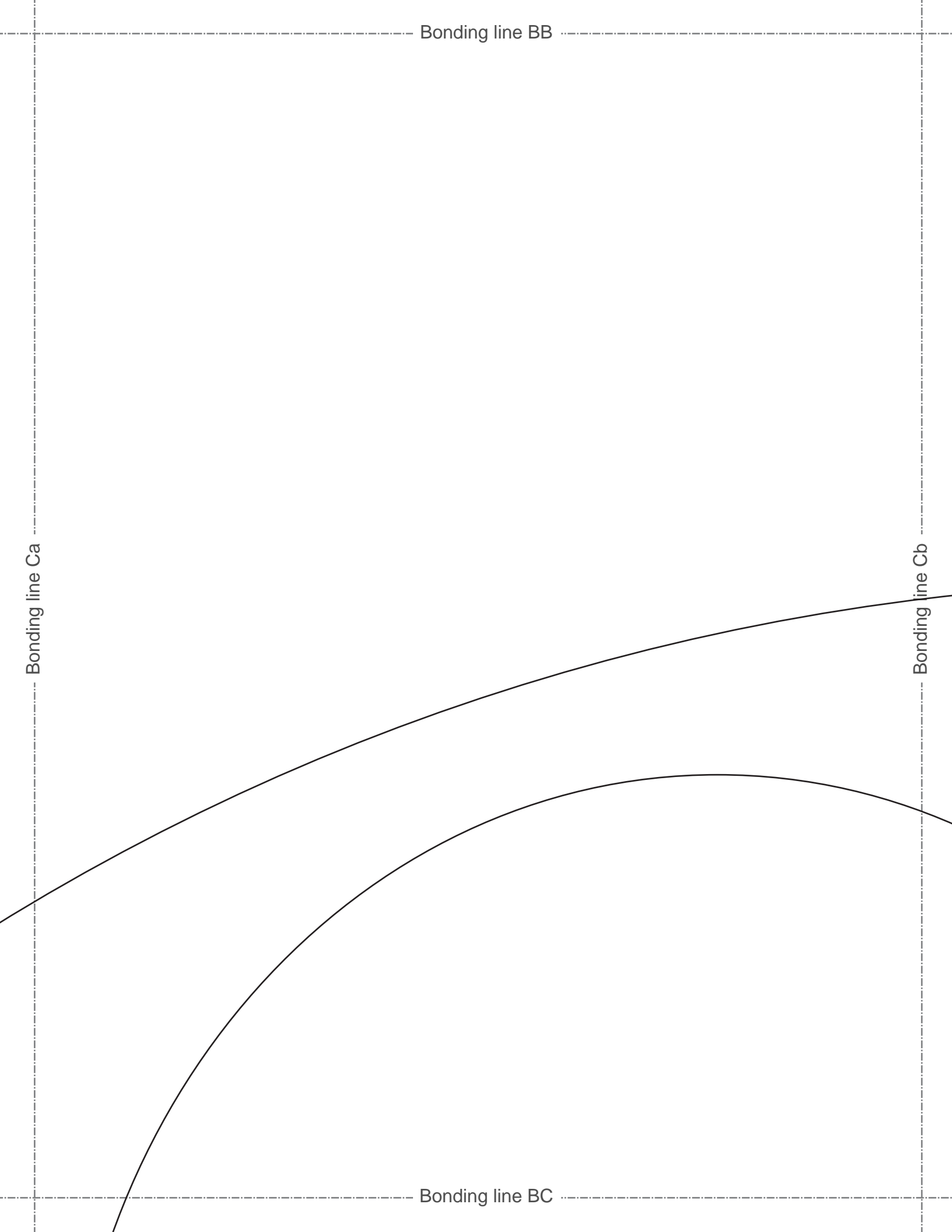


Bonding line BB

Bonding line Ca

Bonding line Cb

Bonding line BC



Bonding line BC



**Tophatz2**  
**Top**  
**fusible interfacing**  
**one sheets**

Bonding line Da

Bonding line Db

Bonding line BD

Bonding line Ab

Bonding line Ac

match marks



Bonding line CA



Bonding line CA

match marks



Seam allowance 1/2in.

Bonding line Bb

Bonding line Bc



Tophat2

Bonding line CB

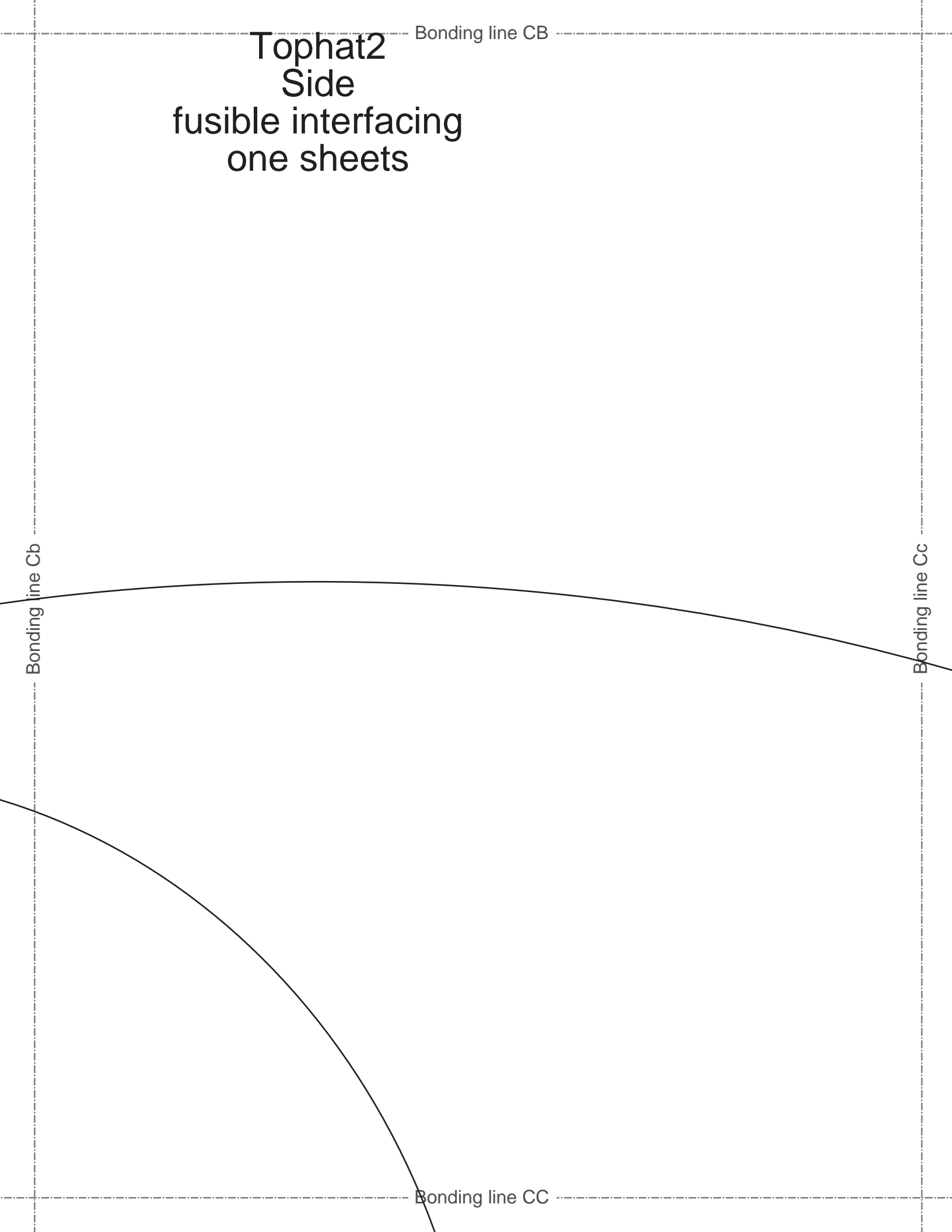
Tophat2  
Side  
fusible interfacing  
one sheets

Bonding line CB

Bonding line Cb

Bonding line Cc

Bonding line CC



Bonding line CC

**DRCOS**  
SITE <http://dr-cos.info/en/> <http://dr-cos.com/jp/>  
MAIL [info@dr-cos.com](mailto:info@dr-cos.com)  
Twitter [https://twitter.com/drcos\\_com](https://twitter.com/drcos_com)  
facebook <https://www.facebook.com/drcoscom>

Bonding line Db

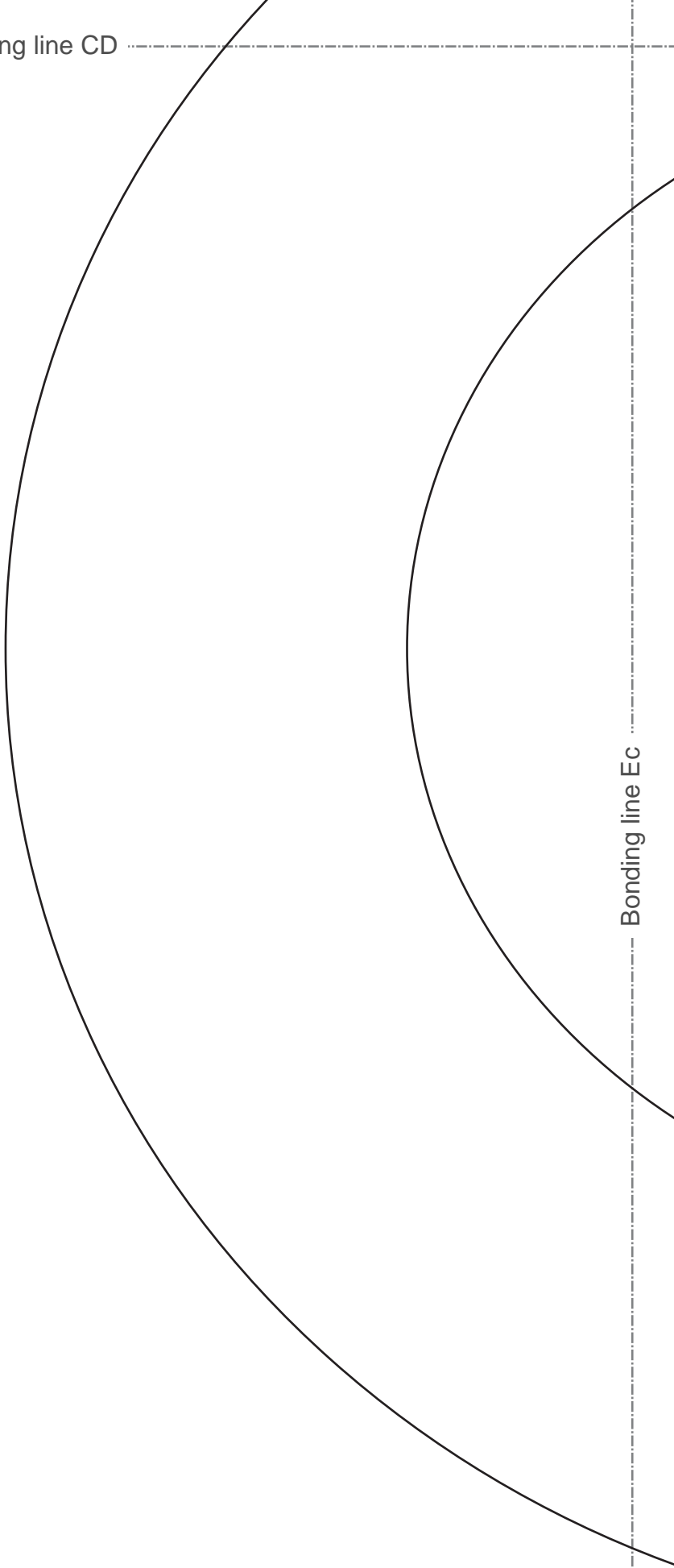
Bonding line Dc  
Grain Line

Bonding line CD

Bonding line Eb

Bonding line CD

Bonding line Ec



Bonding line Ac

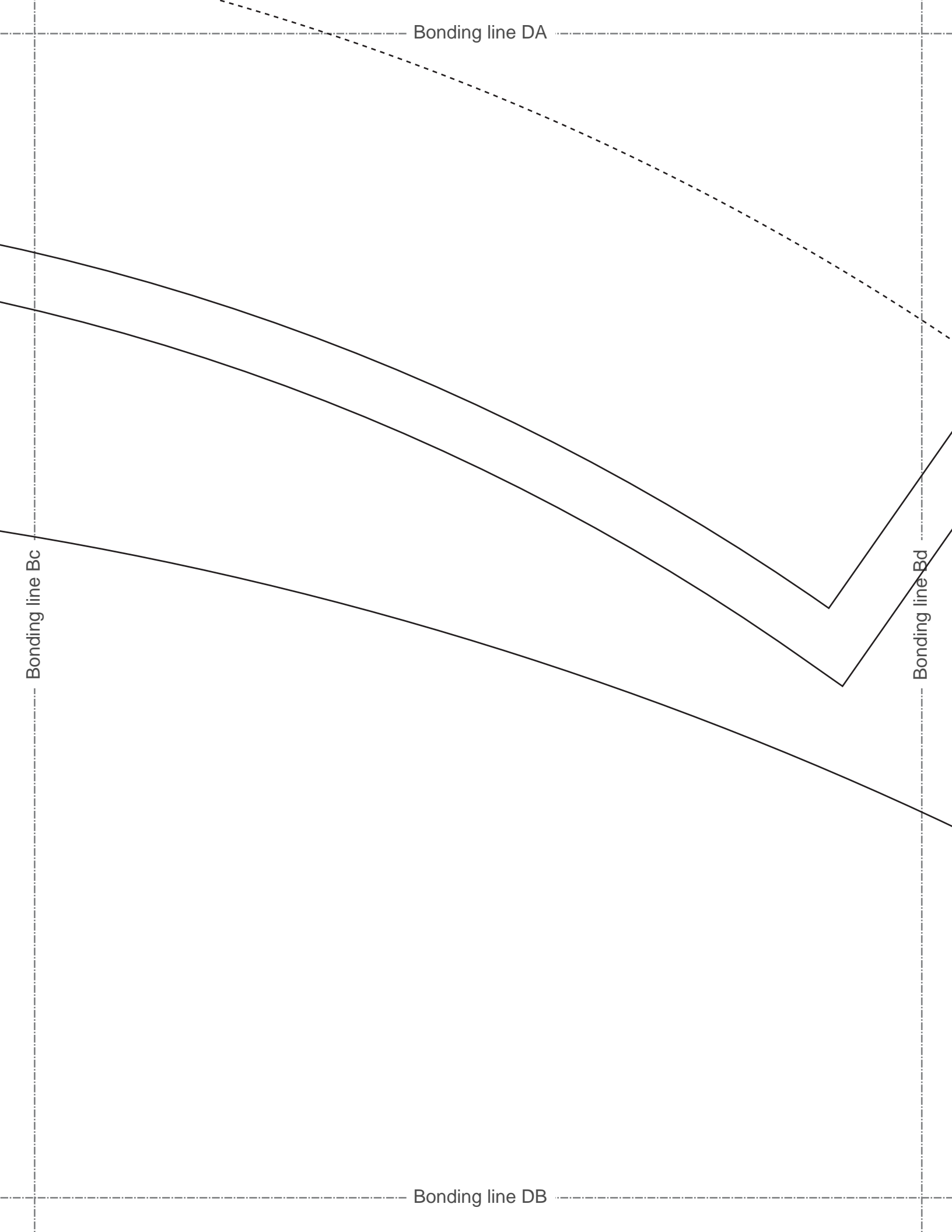
Bonding line Ad

### How to make

Sorry if I haven't made myself understood (well) in English. You know I'm poor at English.

1. Apply fusible interfacing to "Top" "Side" "Brim"
2. Fold the top of "Sidebelt" by 1 cm with an iron and sew to "Side"
3. Sew the "Side" stitch the stitched part (cut off unnecessary part of the seam allowance)
4. Sew the "Top" and "Side" and cut off the seam allowance 2 mm left
5. Sew the two "Brim" pieces
6. Insert the wire in the bias position of "Brim" and bias
7. Sew the "Brim" and "Side"

Bonding line DA

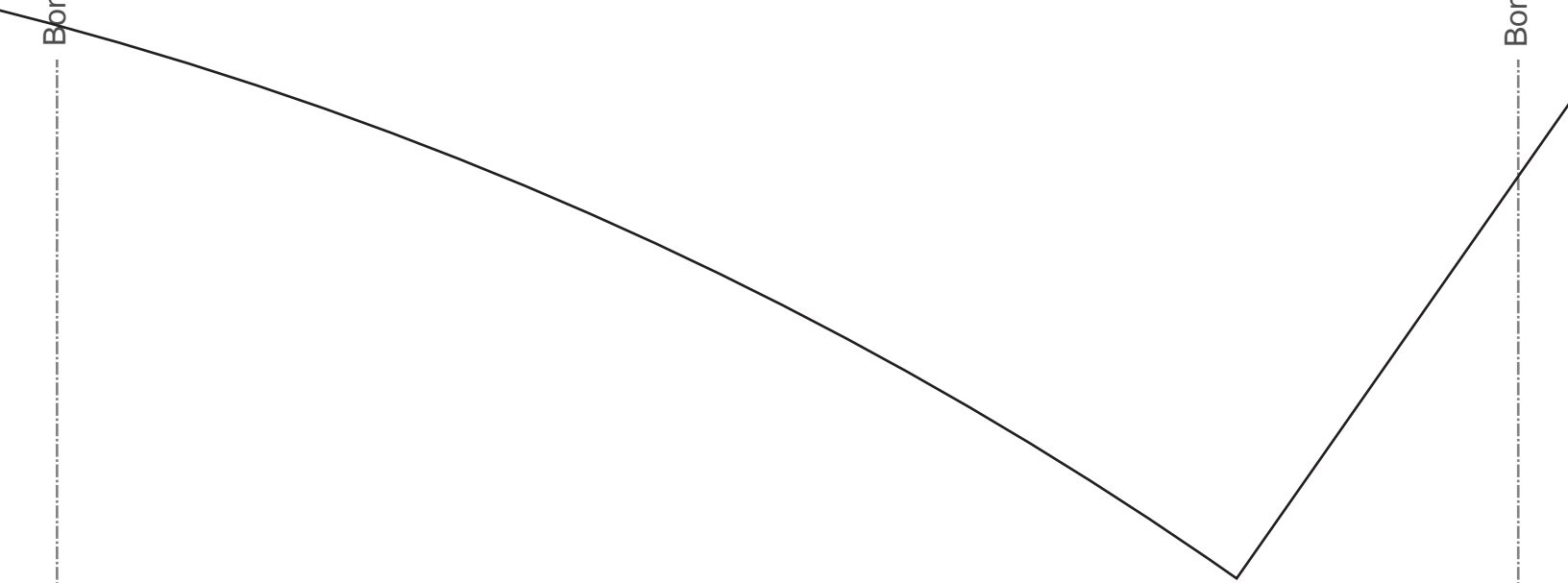


Bonding line DB

Bonding line Cc

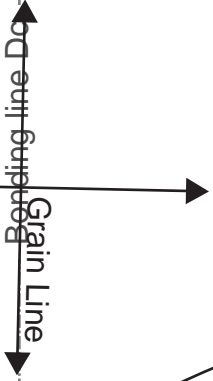
Bonding line Cd

Bonding line DC



Bonding line DC

# Tophat2 Side Belt one sheets



Bonding line Dd

**DRCOS**  
SITE [http://dr-cos.info\(en\)](http://dr-cos.info(en)) [http://dr-cos.com\(jp\)](http://dr-cos.com(jp))  
MAIL [info@dr-cos.com](mailto:info@dr-cos.com)  
Twitter [https://twitter.com/@drcos\\_com](https://twitter.com/@drcos_com)  
facebook <https://www.facebook.com/drcoscom>

Bonding line DD



Bonding line DD

Bonding line Ec

Bonding line Ed



25

Tophat2  
Brim  
fusible interfacing  
one sheets

Bonding line Ad

Bonding line Ae



Bonding line EA

Bonding line EA

Bonding line Bd

Bonding line Be

**DRCOS**

SITE <http://dr-cos.info/en> <http://dr-cos.com/jp>  
MAIL [info@dr-cos.com](mailto:info@dr-cos.com)  
Twitter [https://twitter.com/drcos\\_com](https://twitter.com/drcos_com)  
facebook <https://www.facebook.com/drcos.com>

Bonding line EB

Bonding line EB

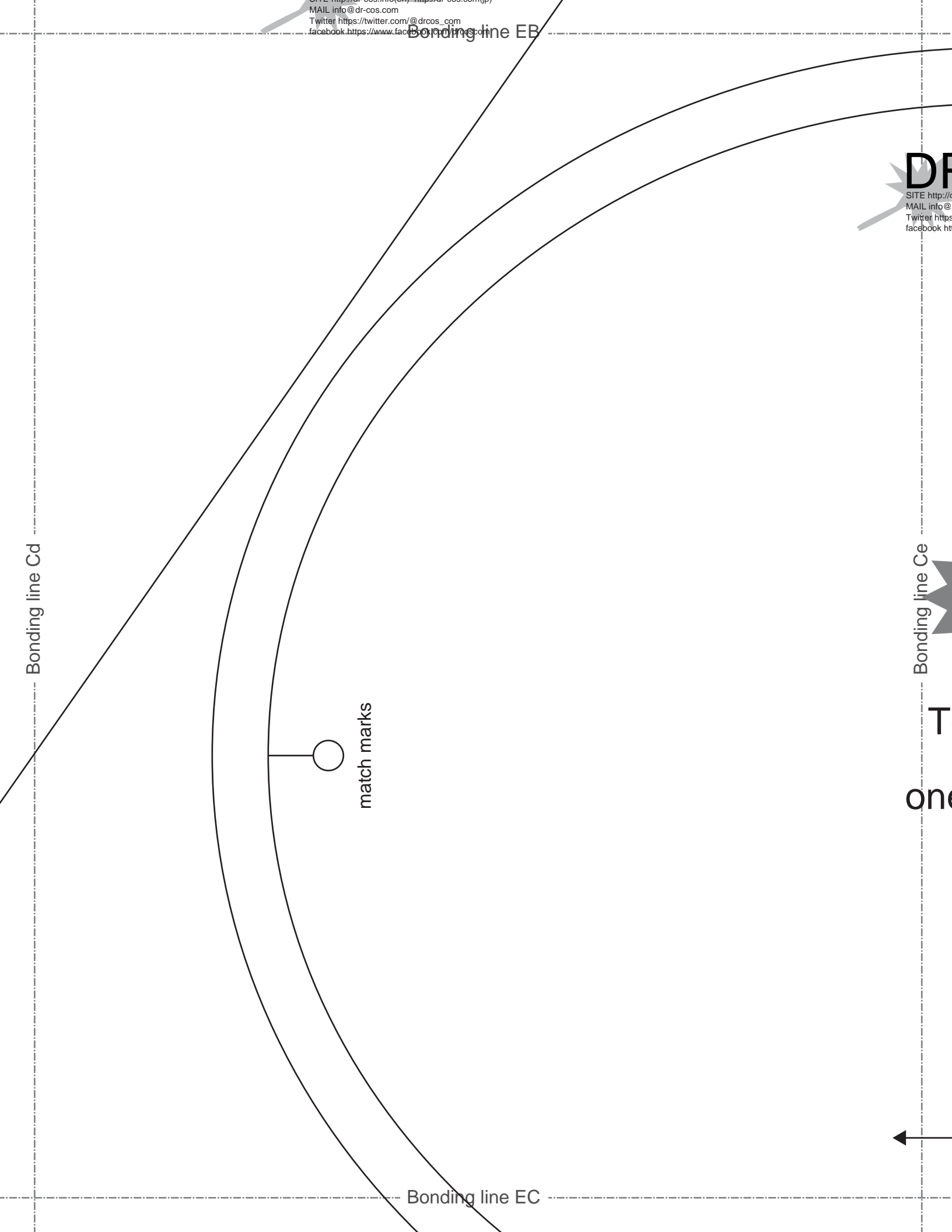
Bonding line Cd

Bonding line Ce

match marks

T  
one

Bonding line EC



Bonding line EC

Seam



Bonding line Dd

Seam allowance 1/2in.

Bonding line De

Bonding line ED



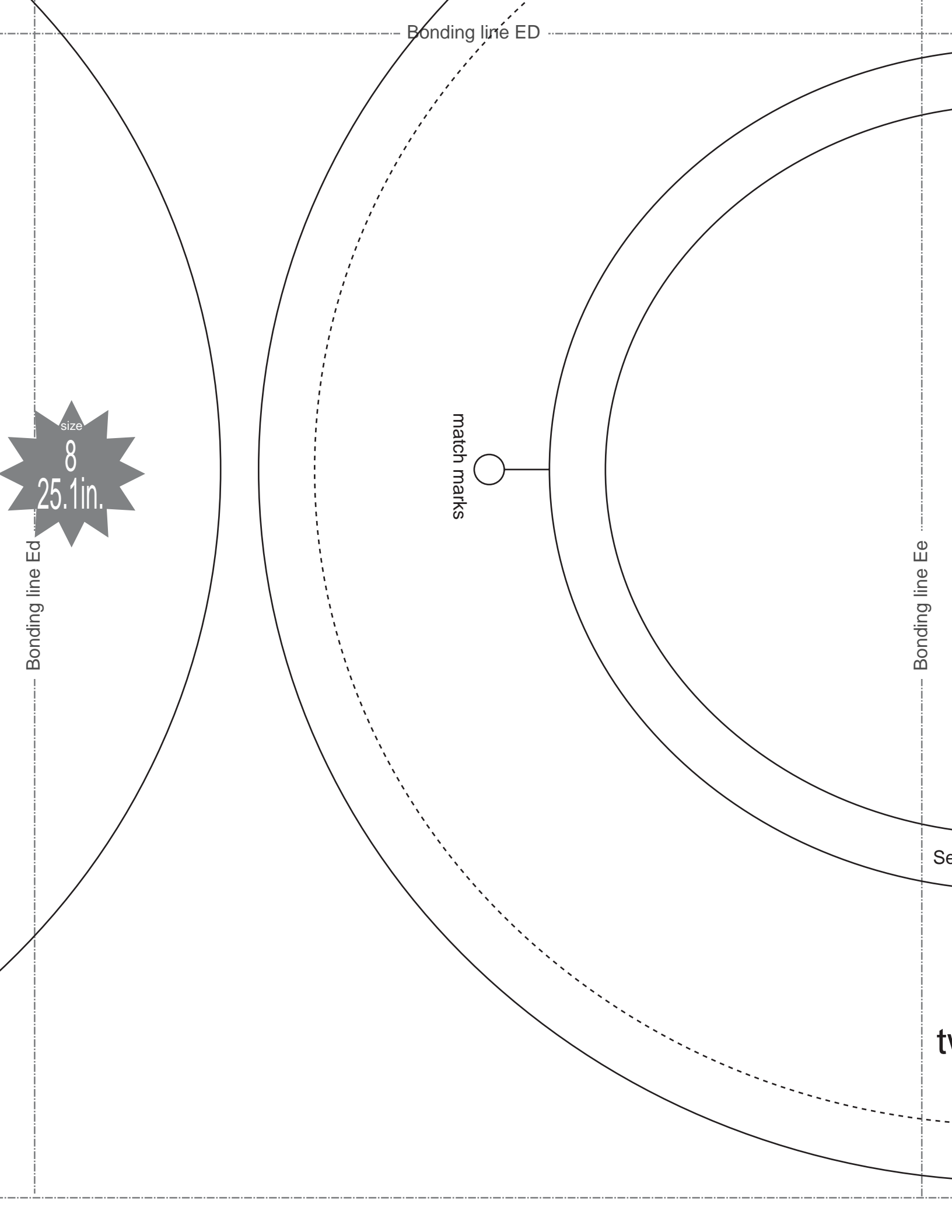
Bonding line ED

Bonding line Ed

Bonding line Ee

size  
8  
25.1in.

match marks

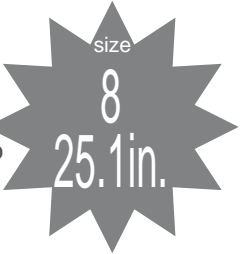


Bonding line FB

# DRCOS

SITE [http://dr-cos.info\(en\)](http://dr-cos.info(en)) [http://dr-cos.com\(jp\)](http://dr-cos.com(jp))  
MAIL [info@dr-cos.com](mailto:info@dr-cos.com)  
Twitter [https://twitter.com/drcos\\_com](https://twitter.com/drcos_com)  
facebook <https://www.facebook.com/drcoscom>

Bonding line Ce

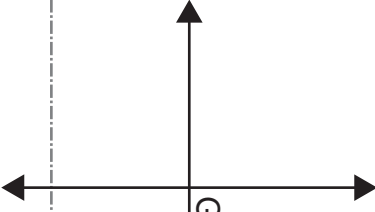


## Tophat2 Top one sheets

match marks



Grain Line



Bonding line FC

ain Line  
↓

Bonding line FC

Seam allowance 1/2in.

Bonding line De



**DRCOS**  
SITE [http://dr-cos.info\(en\)](http://dr-cos.info(en)) [http://dr-cos.com\(jp\)](http://dr-cos.com(jp))  
MAIL [info@dr-cos.com](mailto:info@dr-cos.com)  
Twitter [https://twitter.com/@drcos\\_com](https://twitter.com/@drcos_com)  
facebook <https://www.facebook.com/drcoscom>



**DRCOS**  
SITE [http://dr-cos.info\(en\)](http://dr-cos.info(en)) [http://dr-cos.com\(jp\)](http://dr-cos.com(jp))  
MAIL [info@dr-cos.com](mailto:info@dr-cos.com)  
Twitter [https://twitter.com/@drcos\\_com](https://twitter.com/@drcos_com)  
facebook <https://www.facebook.com/drcoscom>

Bonding line ED





Bonding line ED size



8

25.1in.

Bonding line Ee

match marks

Seam allowance 1/2in.

Grain Line

# Tophat2 Brim two sheets

bias

