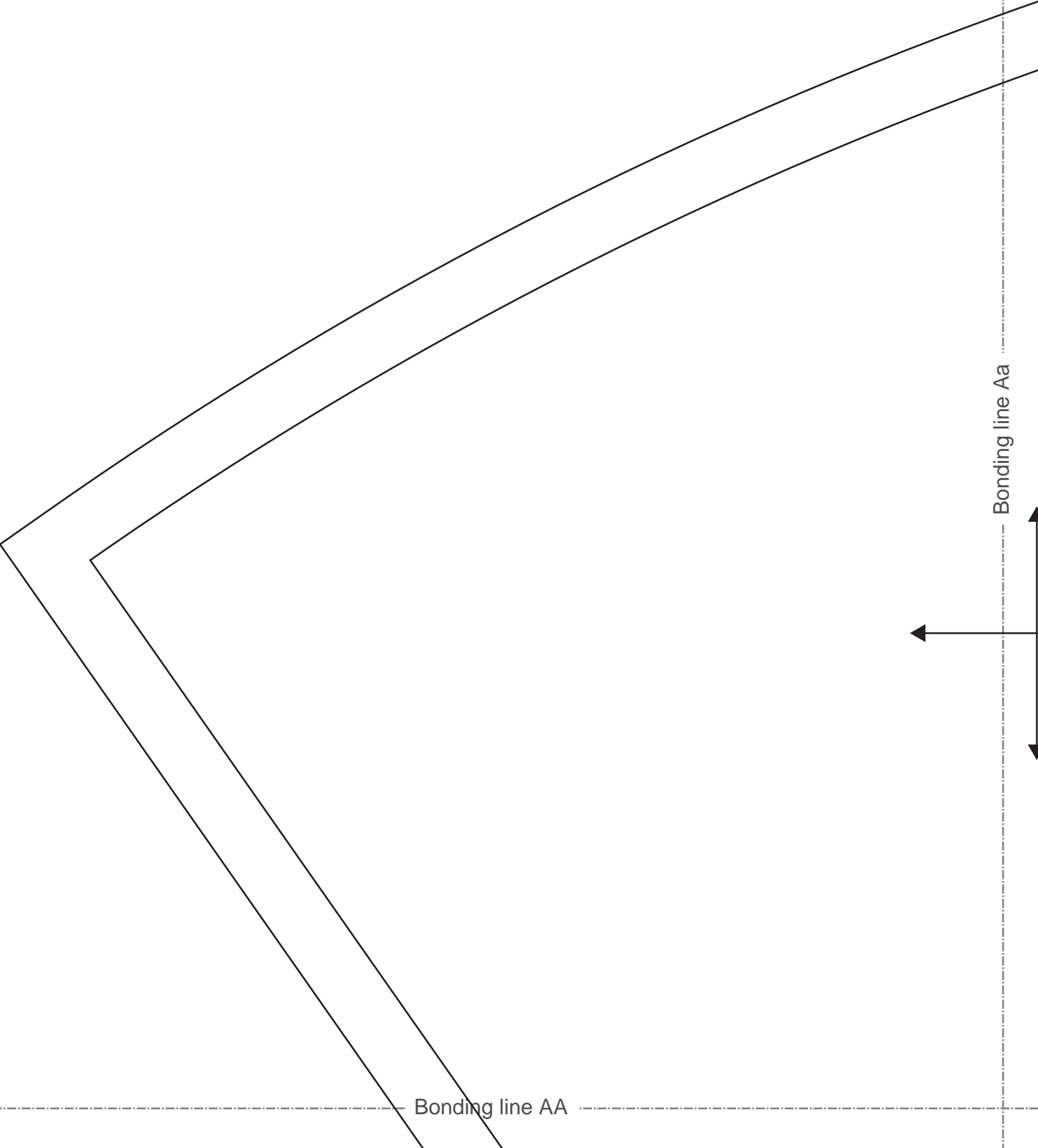


[Home](#)

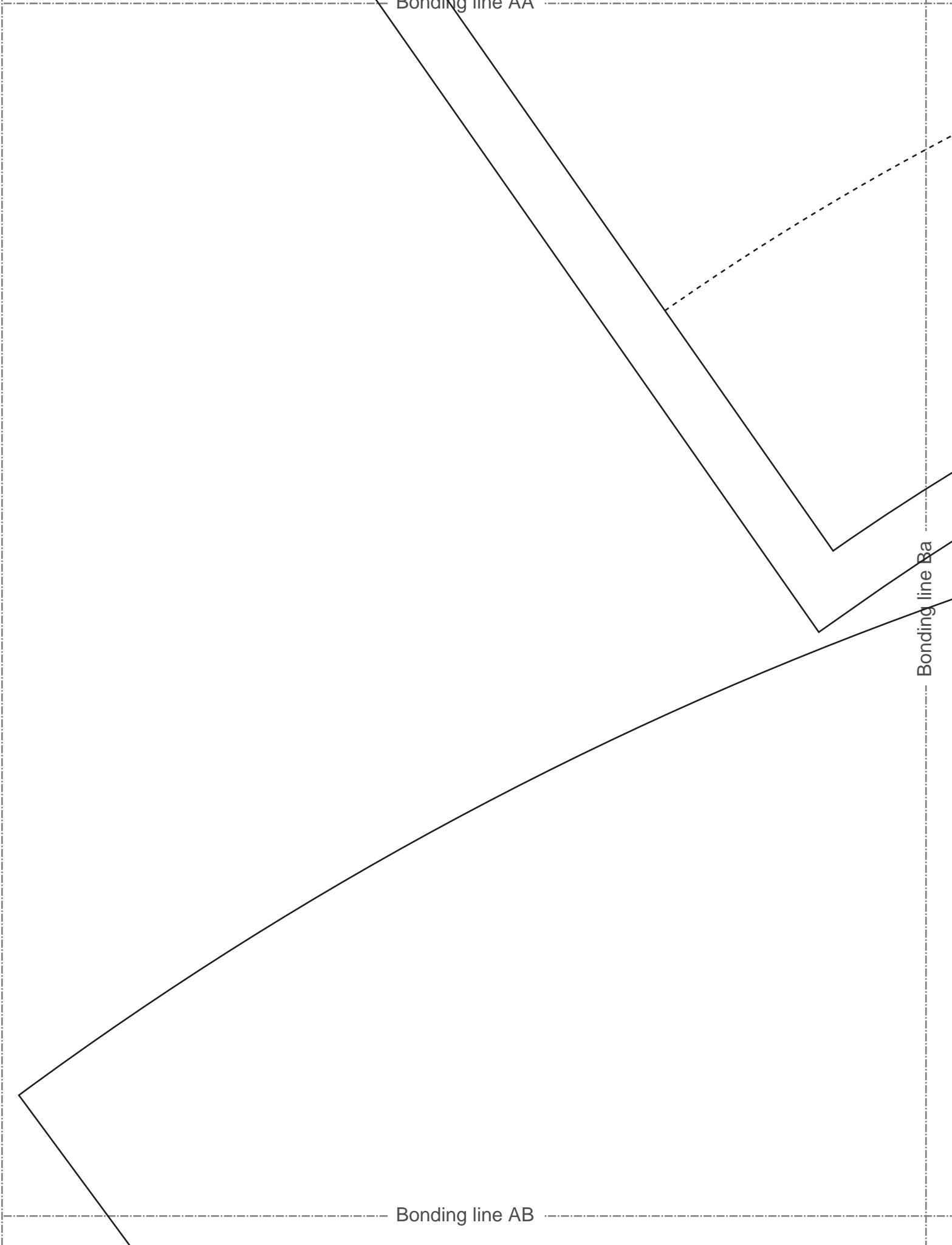
[Back to Tophat2 page](#)



Bonding line AA

Bonding line Ba

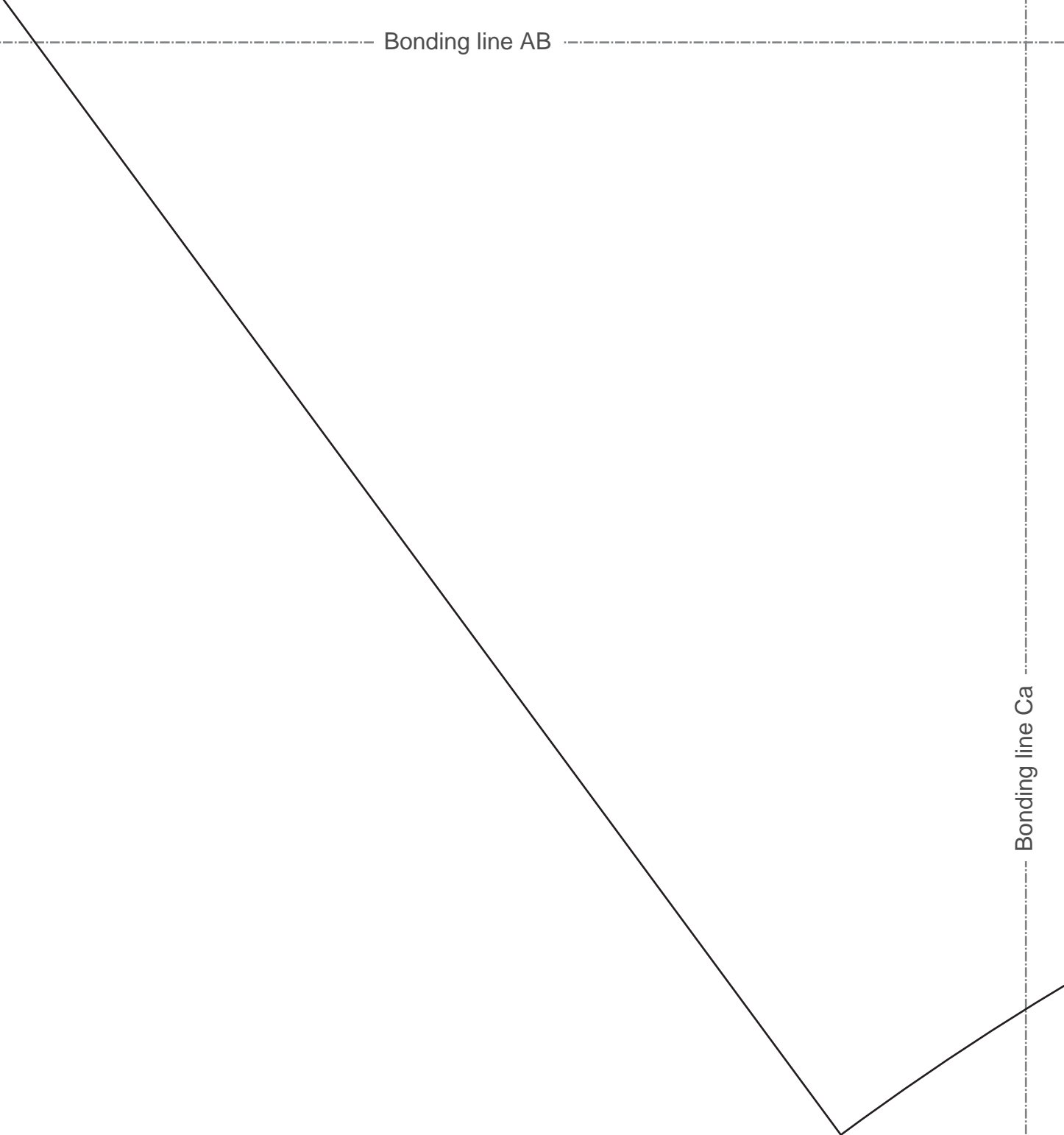
Bonding line AB

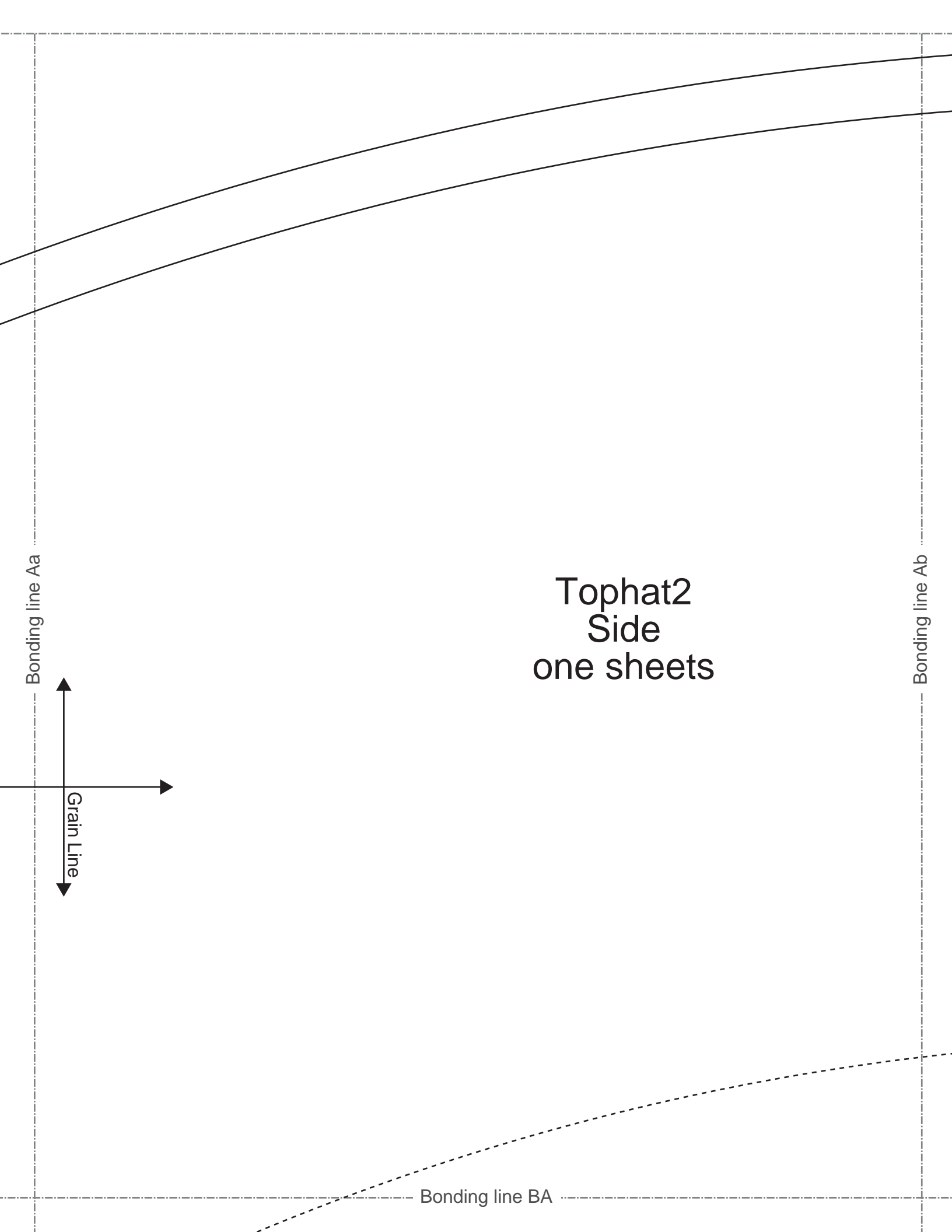


Bonding line AB

Bonding line Ca

Bonding line AC





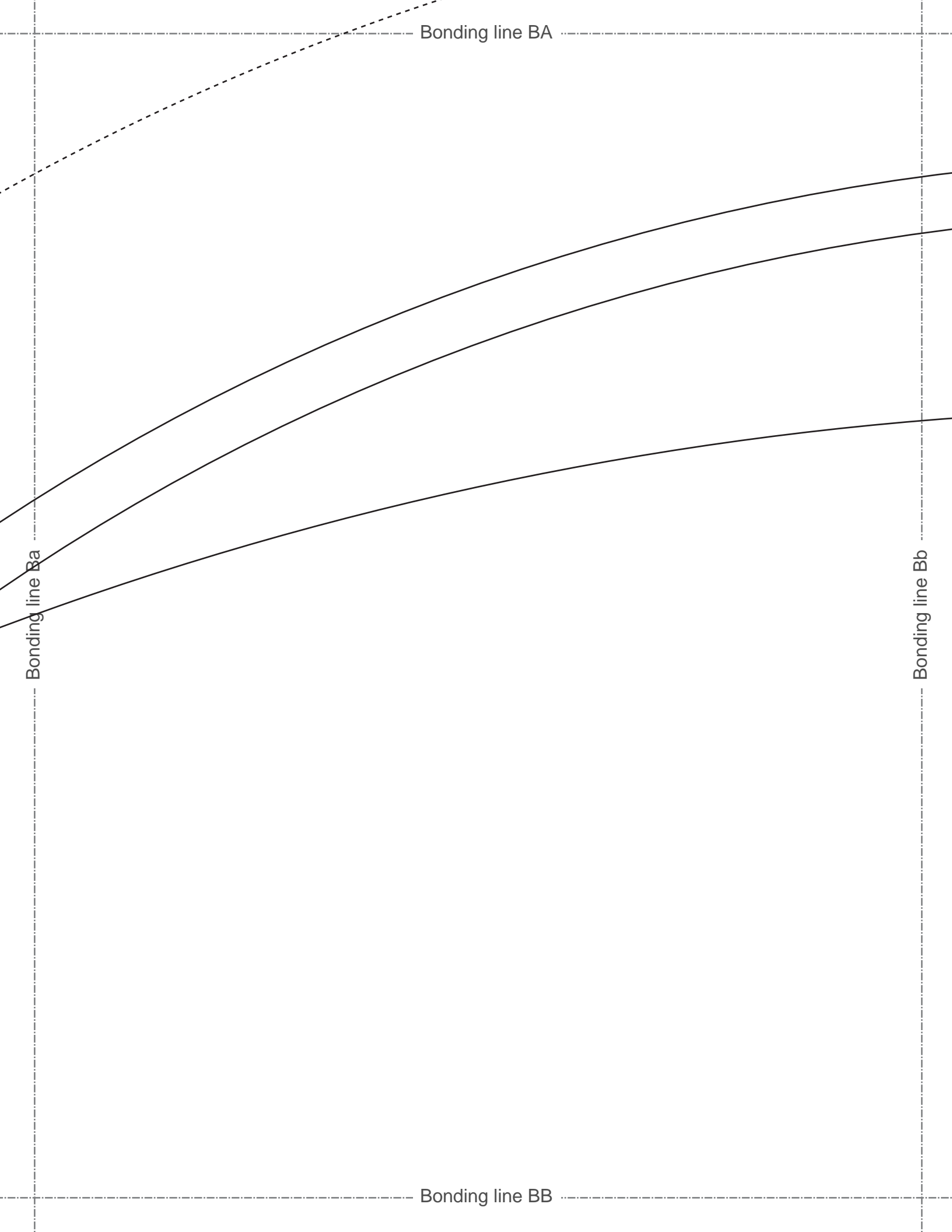
Tophat2
Side
one sheets

Bonding line Aa

Bonding line Ab

Grain Line

Bonding line BA



Bonding line BB

Bonding line Ca

Bonding line Cb

Bonding line BC



DRCOS
SITE <http://dr-cos.info/en> <http://dr-cos.com/jp/>
MAIL info@dr-cos.com
TWITTER https://twitter.com/dr_cos
FACEBOOK <https://www.facebook.com/drcos.com>

Bonding line Da

Bonding line BC

size
7 3/4
24.3in.

Seam allowance 1/2in.

bias

two sheets

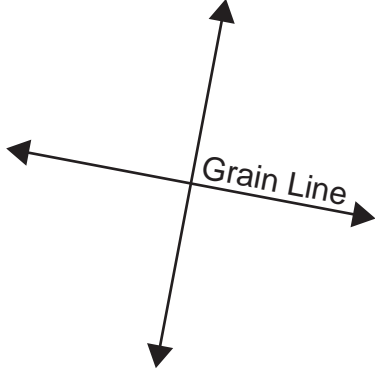
Bonding line Db

Bonding line BD

Bonding line Ea

Bonding line BD

*Tophat2
Side Belt
one sheets*



Bonding line Eb

match marks

size
7 3/4
24.3in.

Bonding line Ab

Bonding line Ac

How

Sorry
in Engl

1. Apply f
2. Fold th
3. Sew the
4. Sew the "
5. Sew the tw
6. Insert the w
7. Sew the "Br

Bonding line CA

match marks

Bonding line CA

match marks



Seam allowance 1/2in.

Bonding line Bb

Bonding line Bc

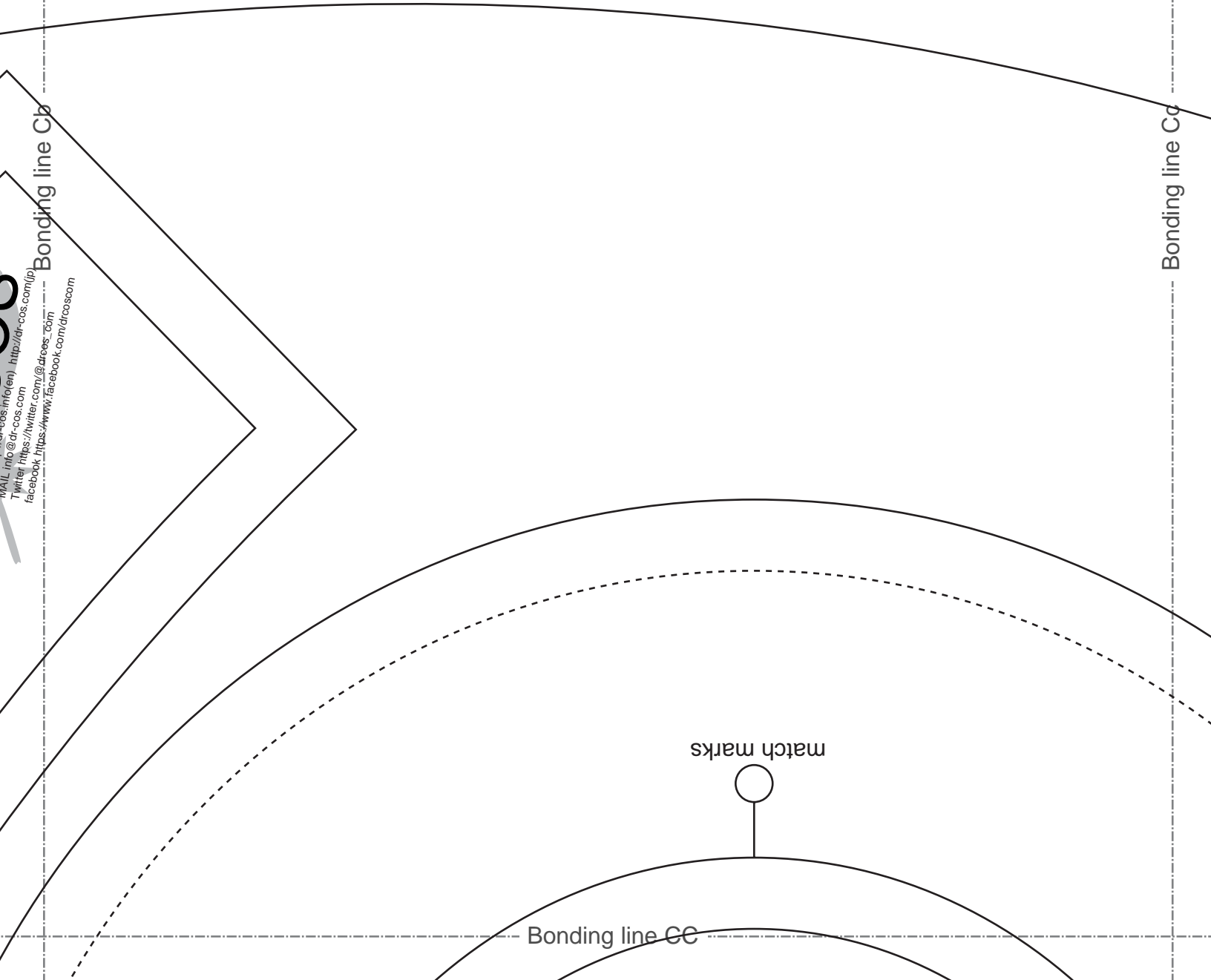


Tophat2
Side
fusible interfacing
one sheets

Bonding line CB

Fusible Interfacing one sheets

Bonding line CB



MAIL info@dr-cos.info
Twitter https://twitter.com/dr_cos
facebook https://www.facebook.com/dr_cos

Bonding line Cb

Bonding line Cc

match marks

Bonding line CC

Bonding line CC

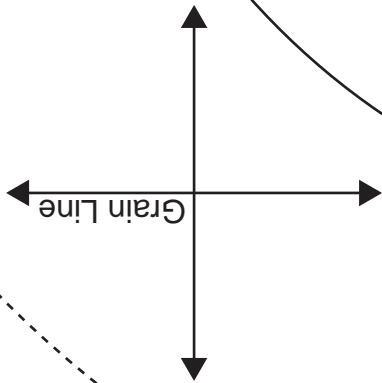
Seam allowance 1/2in.

Bonding line Dc

24.3in.

match marks

Bonding line CD



Tophat2 Brim

two sheets

Bonding line Db

Bonding line Ac

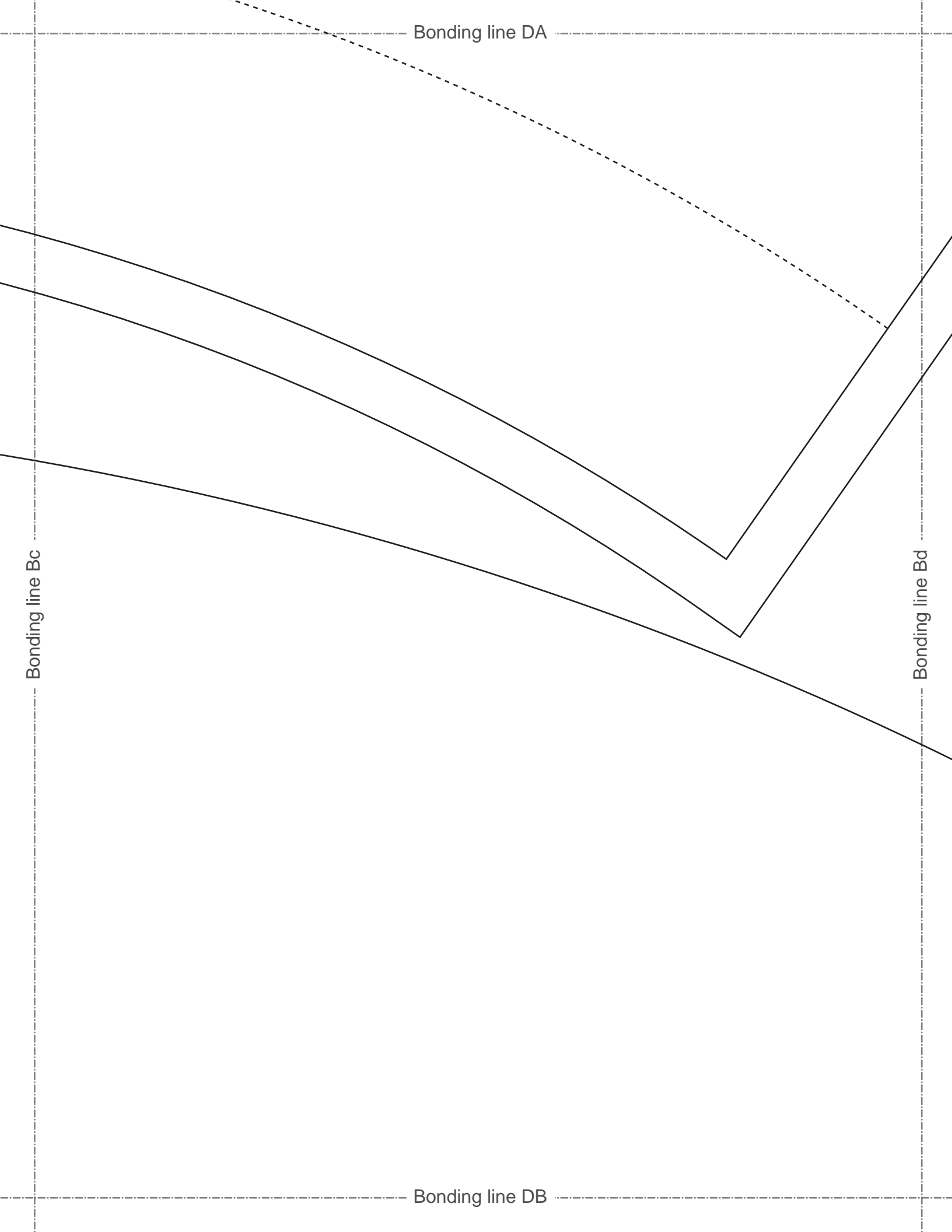
Bonding line Ad

How to make

Sorry if I haven't made myself understood (well) in English. You know I'm poor at English.

1. Apply fusible interfacing to "Top" "Side" "Brim"
 2. Fold the top of "Sidebelt" by 1 cm with an iron and sew to "Side"
- Sew the "Side" stitch the stitched part (cut off unnecessary part of the seam allowance)
- Sew the "Top" and "Side" and cut off the seam allowance 2 mm left
- Sew the two "Brim" pieces
- Insert the wire in the bias position of "Brim" and bias
- Sew the "Brim" and "Side"

Bonding line DA

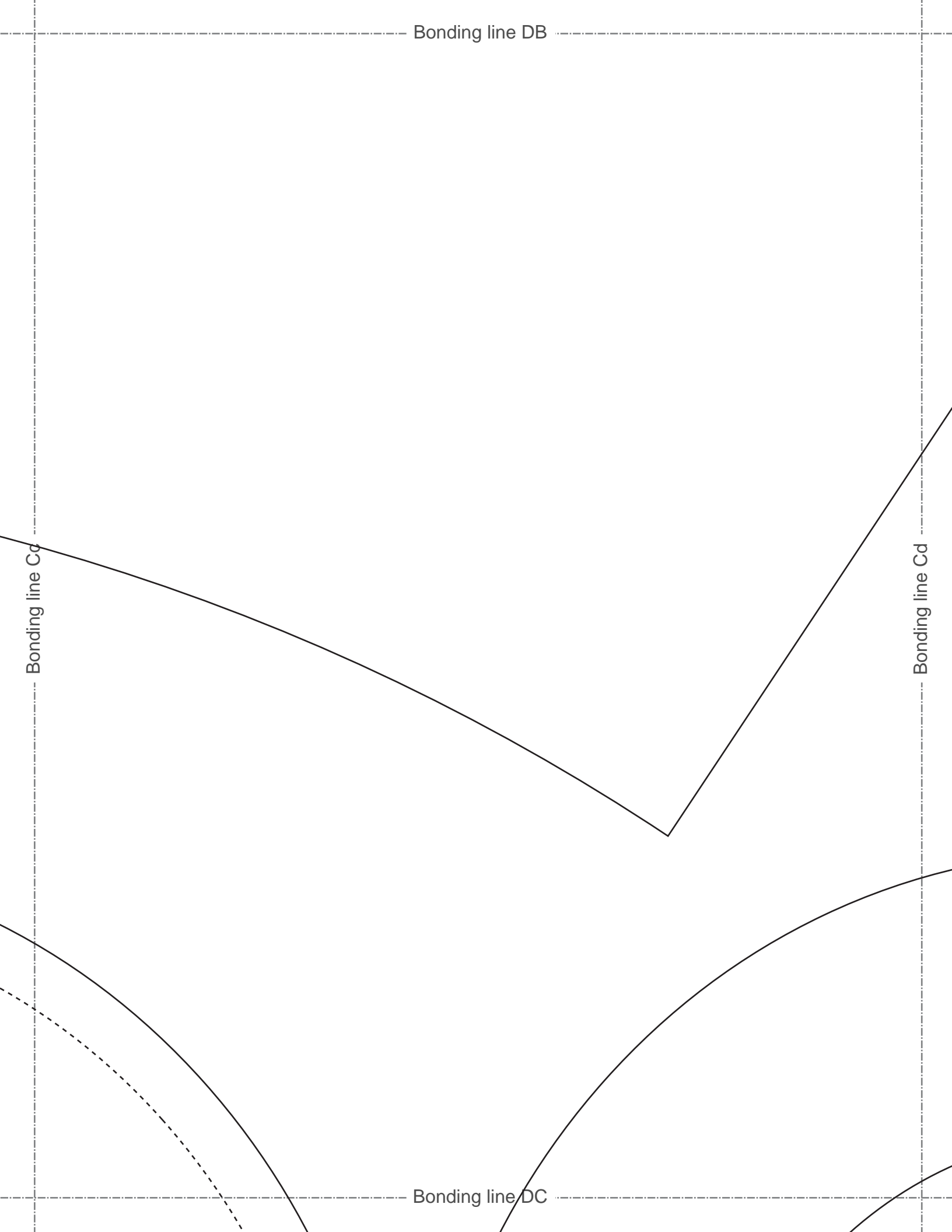


Bonding line DB

Bonding line Cc

Bonding line Cd

Bonding line DC



Bonding line DC

Bonding line Dc

DRCOS
 SITE <http://dr-cos.info/en> <http://dr-cos.com/jp>
 MAIL info@dr-cos.com
 Twitter [@drcos_com](https://twitter.com/@drcos_com)
 facebook <https://www.facebook.com/drcoscom>

DRCOS
 SITE <http://dr-cos.info/en> <http://dr-cos.com/jp>
 MAIL info@dr-cos.com
 Twitter [@drcos_com](https://twitter.com/@drcos_com)
 facebook <https://www.facebook.com/drcoscom>

Bonding line Dd

Bonding line DD

size
 7 3/4
 24.3in.

Bonding line Ad

Bonding line Ae



DRCOS
SITE [http://dr-cos.info\(en\)](http://dr-cos.info(en)) [http://dr-cos.com\(jp\)](http://dr-cos.com(jp))
MAIL info@dr-cos.com
Twitter [@drcos_com](https://twitter.com/@drcos_com)
facebook <https://www.facebook.com/drcoscom>

Bonding line EA

Bonding line EA

Bonding line Bd

Bonding line Be

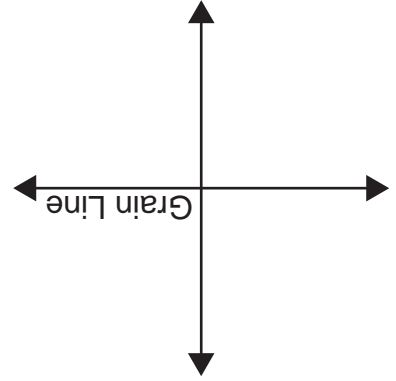
DRCOS

SITE [http://dr-cos.info\(en\)](http://dr-cos.info(en)) [http://dr-cos.com\(jp\)](http://dr-cos.com(jp))
MAIL info@dr-cos.com
Twitter https://twitter.com/drcos_com
facebook <https://www.facebook.com/drcoscom>

Bonding line EB

Bonding line EB

Seam allowance 1/2in.

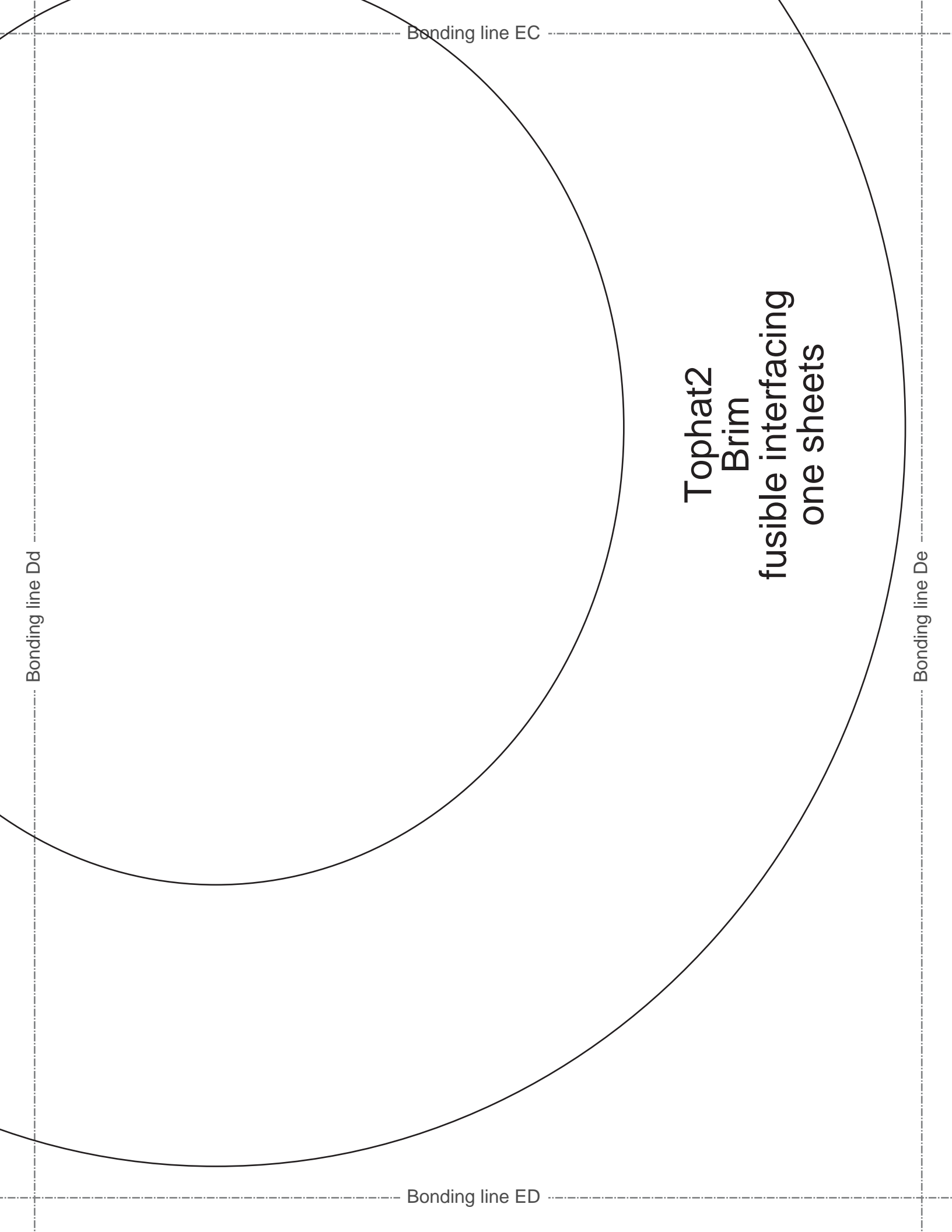


Bonding line Cd

Bonding line Ce

size
7 3/4
24.3in.

Bonding line EC



Bonding line EC

Bonding line Dd

Bonding line De

Bonding line ED

Tophat2
Brim
fusible interfacing
one sheets

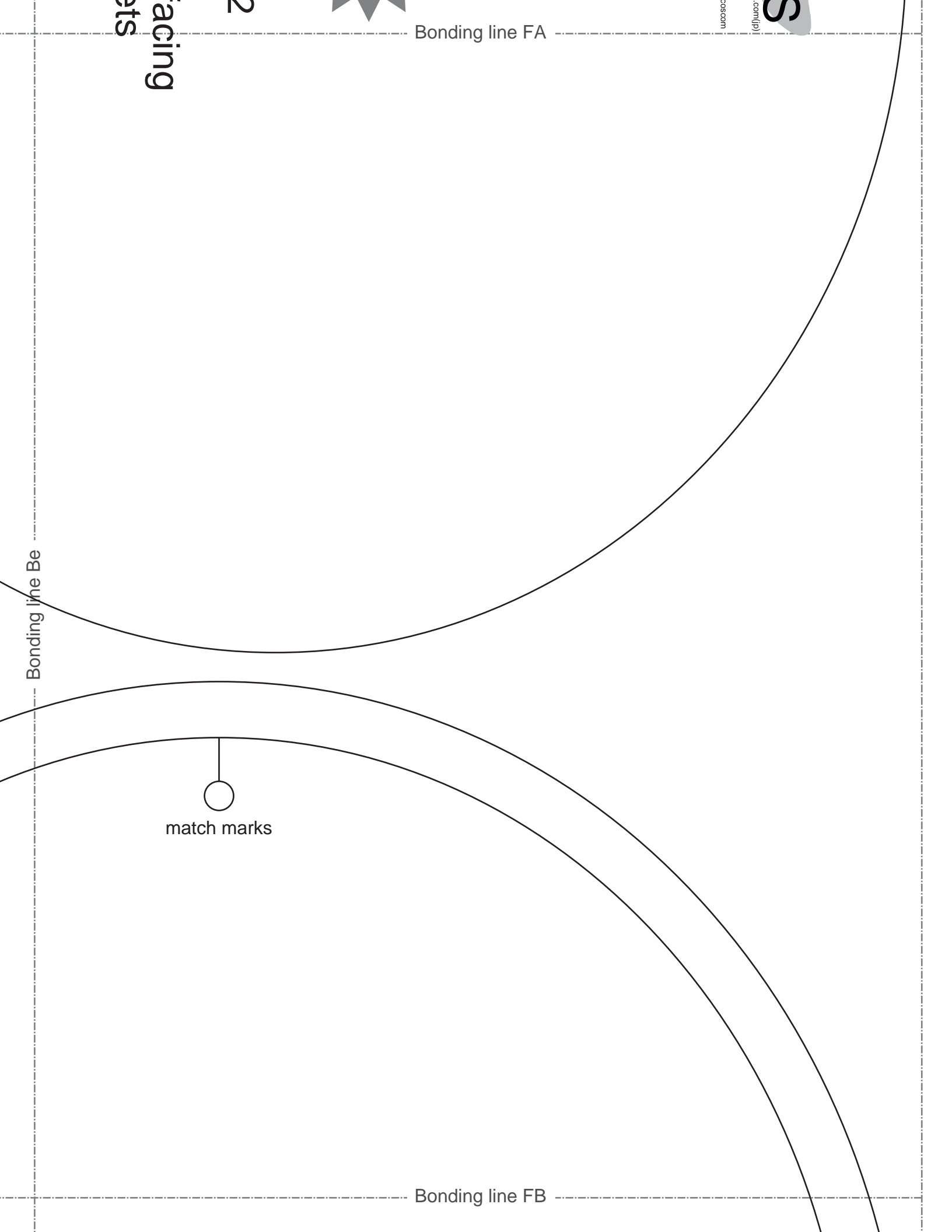
DRCOS
SITE <http://dr-cos.info/en> <http://dr-cos.com/jp/>
MAIL info@dr-cos.com
Twitter [@dr-cos.com](https://twitter.com/dr-cos.com)
facebook <https://www.facebook.com/drcoscom>

size
7 3/4
24.3in.

Tophatz2
Top
fusible interfacing
one sheets

Bonding line Ae

Bonding line FA



Bonding line FA

Bonding line FB

Bonding line Be

match marks

acing
ets

2

com(fir)
lucosccc



Bonding line FB



Tophat2
Top
one sheets

match marks



Bonding line Ce

Bonding line FC