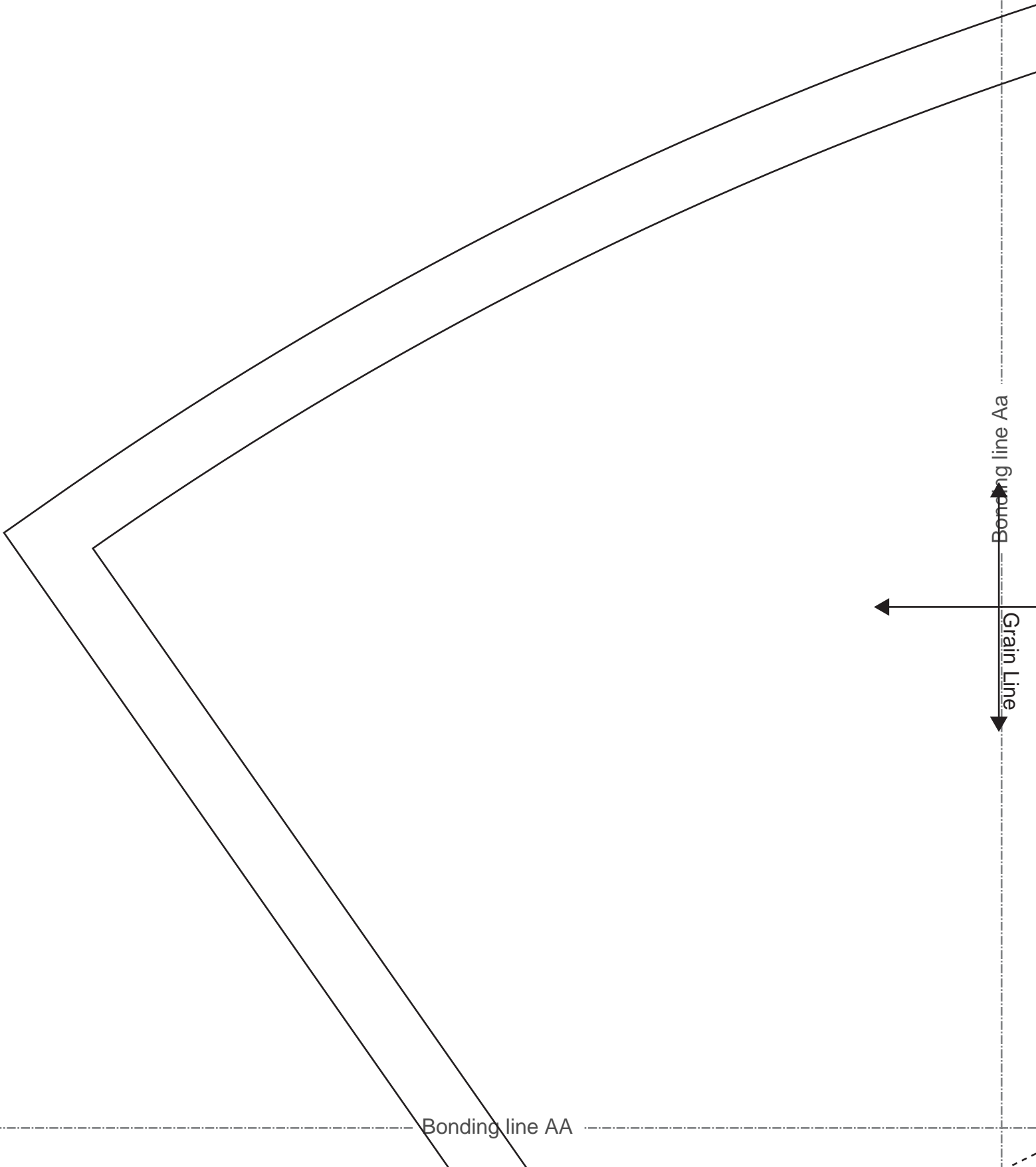


[Home](#)

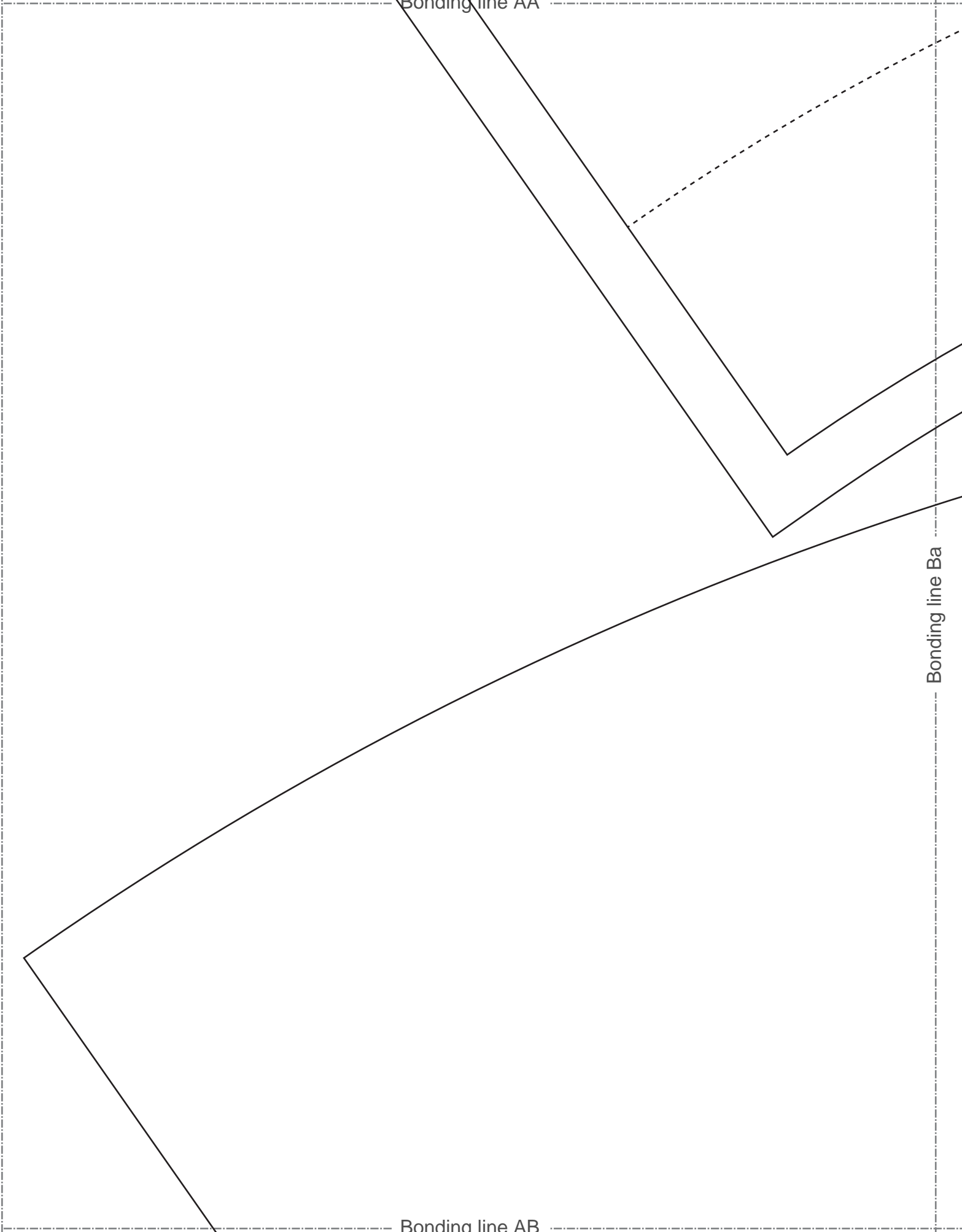
[Back to Tophat2 page](#)



Bonding line AA

Bonding line AB

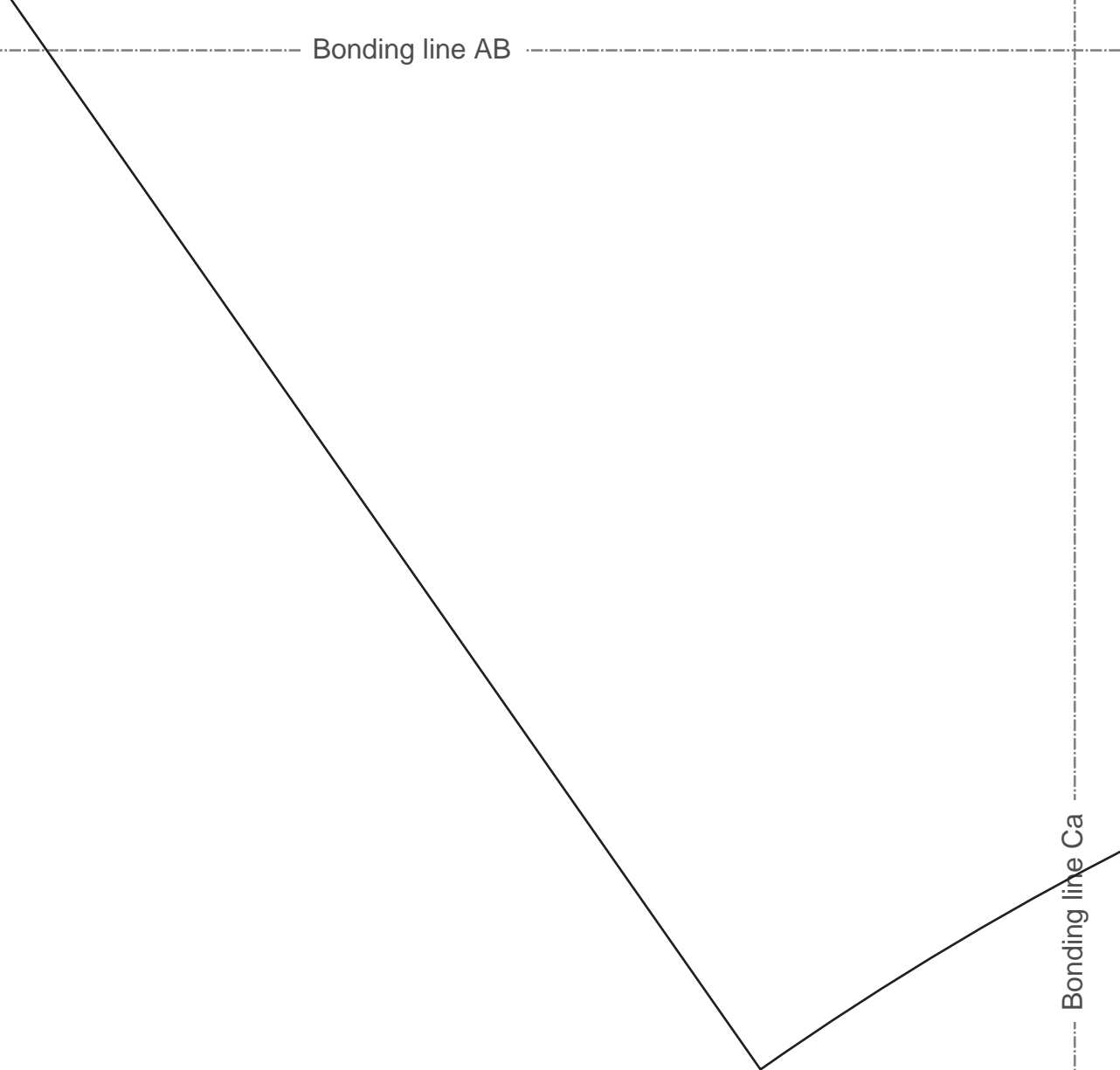
Bonding line Ba

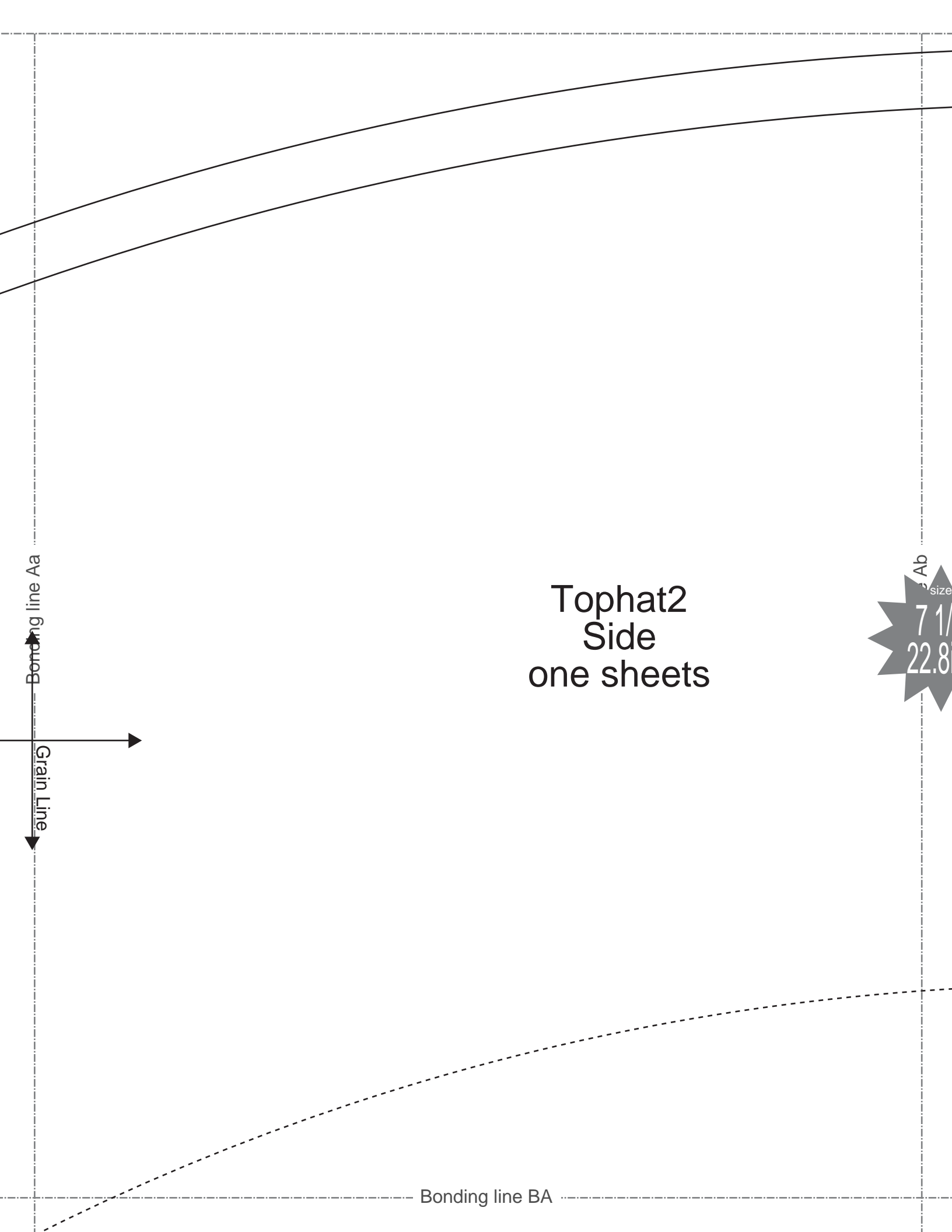


Bonding line AB

Bonding line Ca

Bonding line AC





Bonding line Aa

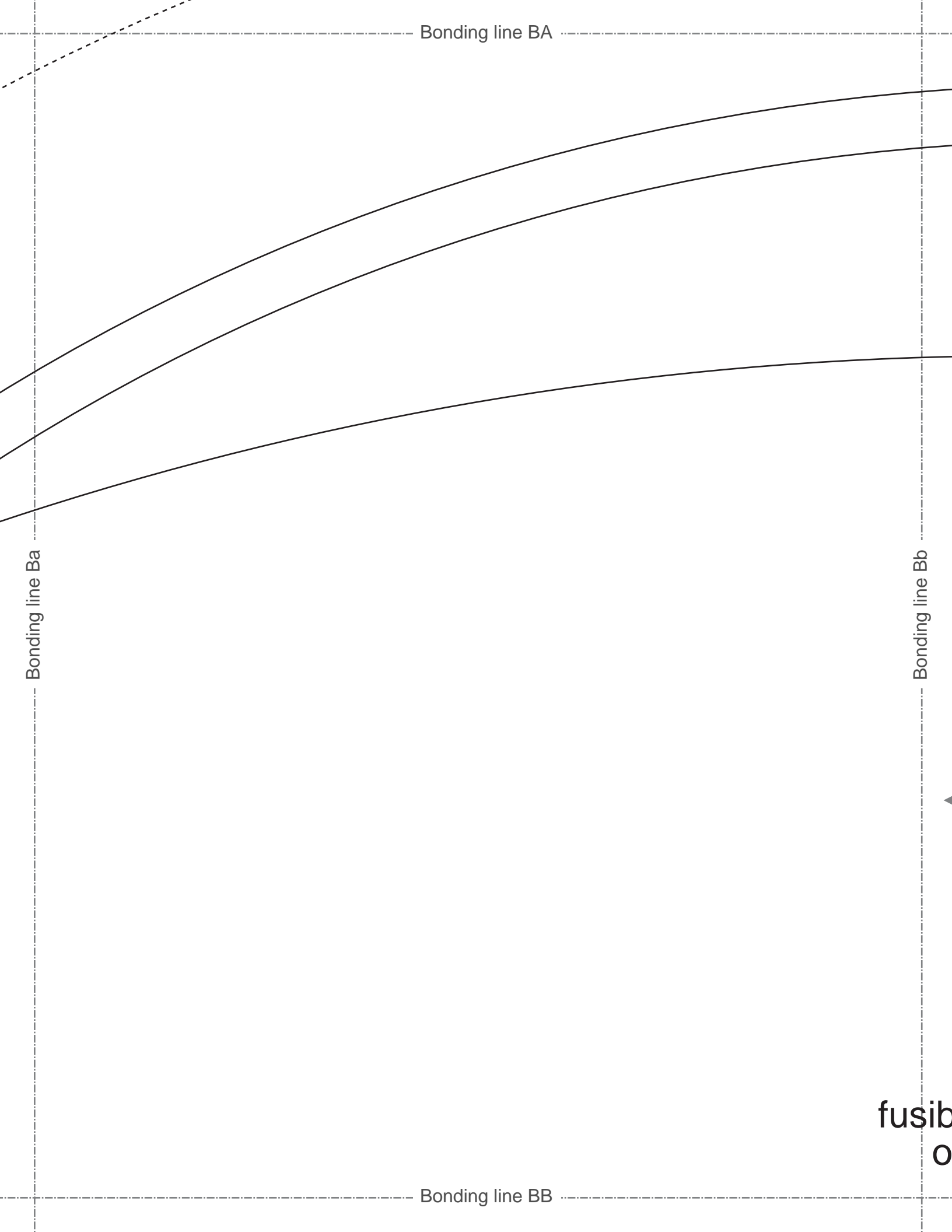
Grain Line

Tophat2
Side
one sheets

7 1/2 size

22.8

Bonding line BA



Bonding line BB

Bonding line Ca

Bonding line Cb

Bonding line BC

DRCOS
SITE [http://drcos.info\(en\)](http://drcos.info/en) [http://drcos.com\(jp\)](http://drcos.com(jp))
MAIL info@drcos.com
Twitter https://twitter.com/drcos_com
facebook <https://www.facebook.com/drcoscom>

match marks

size
7 1/4
22.8in.

Bonding line AC

How to make

Sorry if I haven't made myself understood in English. You know I'm poor at English.

1. Apply fusible interfacing to "Top" "Side" "E"
2. Fold the top of "Sidebelt" by 1 cm with an
3. Sew the "Side" stitch the stitched part (cut o
4. Sew the "Top" and "Side" and cut off the sea
5. Sew the two "Brim" pieces
6. Insert the wire in the bias position of "Brim" an
7. Sew the "Brim" and "Side"

match marks

Bonding line CA

Bonding line CA

Seam allowance 1/2in.

Bonding line Bb

Bonding line Bc



Tophat2
Side

visible interfacing
one sheets

Bonding line CB

Bonding line CB

Bonding line Cb

Bonding line Cc

e 1/2 in.

Bonding line CC



Bonding line Ac

Bonding line Ad

DR

SITE <http://dr-co>
MAIL info@dr-co
Twitter <https://twitter.com/dr-co>
facebook <https://facebook.com/dr-co>

nderstood (well)
English.

"Side" "Brim"
n with an iron and sew to "Side"
part (cut off unnecessary part of the seam allowance)
ff the seam allowance 2 mm left
"Brim" and bias

Bonding line DA

Bonding line DA

Bonding line Bc

Bonding line Bd

Bonding line DB



DRCC
SITE [http://dr-cos.info\(en\)](http://dr-cos.info(en)) | <http://dr-cos.com>
MAIL info@dr-cos.com
Twitter <https://twitter.com/dr-cos>
facebook <https://www.facebook.com/dr-cos>

Bonding line DB

Bonding line Cc

Bonding line Cd

Seam allowance 1/2 in.

one sheets
Side Belt
Tophat2



Bonding line DC



Bonding line DC

DRCOS

SITE [http://dr-cos.info\(en\)](http://dr-cos.info(en)) [http://dr-cos.com\(jp\)](http://dr-cos.com(jp))
MAIL info@dr-cos.com
Twitter https://twitter.com/drcos_com
facebook <https://www.facebook.com/drcoscom>

Bonding line Dc



**Tophat2
Top
fusible interfacing
one sheets**

Bonding line Dd

Bonding line DD

Bonding line Ad

DRCOS

SITE [http://dr-cos.info\(en\)](http://dr-cos.info(en)) [http://dr-cos.com\(jp\)](http://dr-cos.com(jp))
MAIL info@dr-cos.com
Twitter https://twitter.com/drcos_com
facebook <https://www.facebook.com/drcoscom>

Bonding line EA

Bonding line Ae

match marks



Bonding line EA

Bonding line Bd

Bonding line Be

RCOS

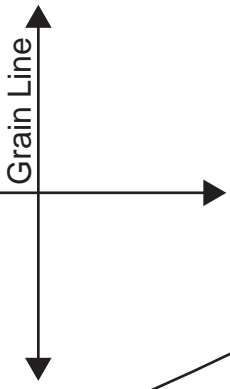
rcos.info(en) [http://dr-cos.com\(jp\)](http://dr-cos.com(jp))
rcos.com
twitter.com/@drcos_com
://www.facebook.com/drcoscom

Bonding line EB

Bonding line EB

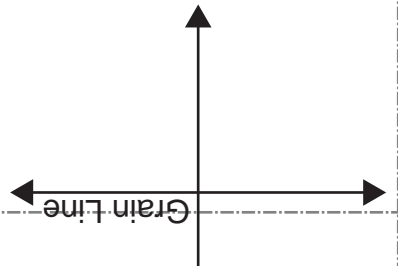
Bonding line Cd

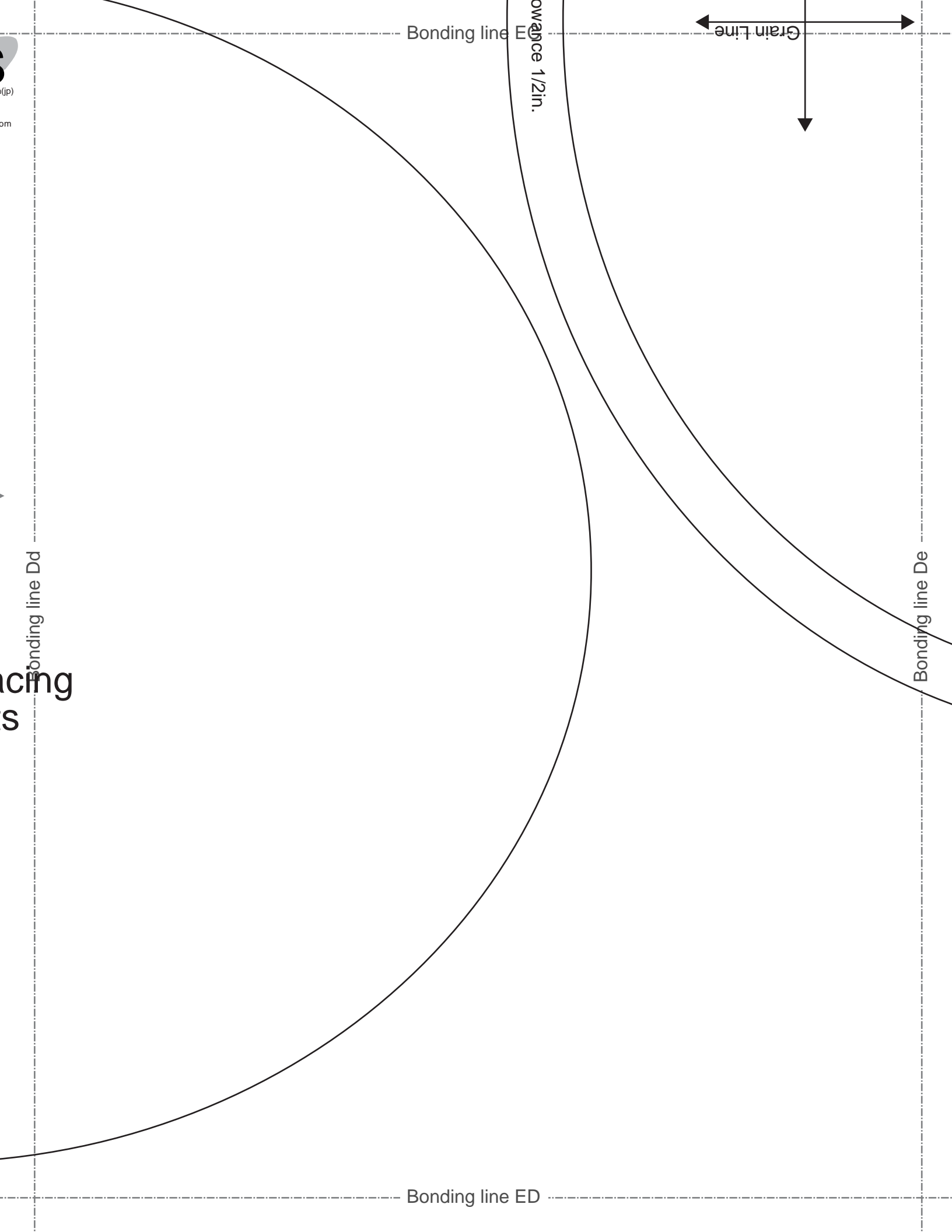
Bonding line Ce



Seam allowance

Bonding line EF





DRCOS

SITE [http://dr-cos.info\(en\)](http://dr-cos.info(en)) [http://dr-cos.com\(jp\)](http://dr-cos.com(jp))
MAIL info@dr-cos.com
Twitter https://twitter.com/drcos_com
facebook <https://www.facebook.com/drcoscom>

size
7 1/4
22.8in.

Bonding line Ae

match marks

Seam allowance 1/2in.

Grain Line

Tophat2
Brim
two sheets

Bonding line FA

Brim two sheets

Bonding line FA

bias

DRCOS

SITE [http://dr-cos.info\(en\)](http://dr-cos.info(en)) [http://dr-cos.com\(jp\)](http://dr-cos.com(jp))
MAIL info@dr-cos.com
Twitter https://twitter.com/@drcos_com
facebook <https://www.facebook.com/drcoscom>

Bonding line Be

size
7 1/4
22.8in.

Bonding line FB

Bonding line FB

Tophat2
Brim
fusible interfacing
one sheets

Bonding line Ce

match marks

Bonding line FC

Tophat
Top
one sheet



DRCCO

SITE: <http://dr-cos.info/en/> <http://dr-cos.info/>
 EMAIL: info@dr-cos.com
 TWITTER: https://twitter.com/drccos_cc
 FACEBOOK: <https://www.facebook.com/drccos.com/>

COS

tel: (+31) 411 23 23 23
www.cos.com
www.facebook.com/drcoscom

Bonding line FC



chatz
op
sheets

match marks



Bonding line De

Bonding line FD