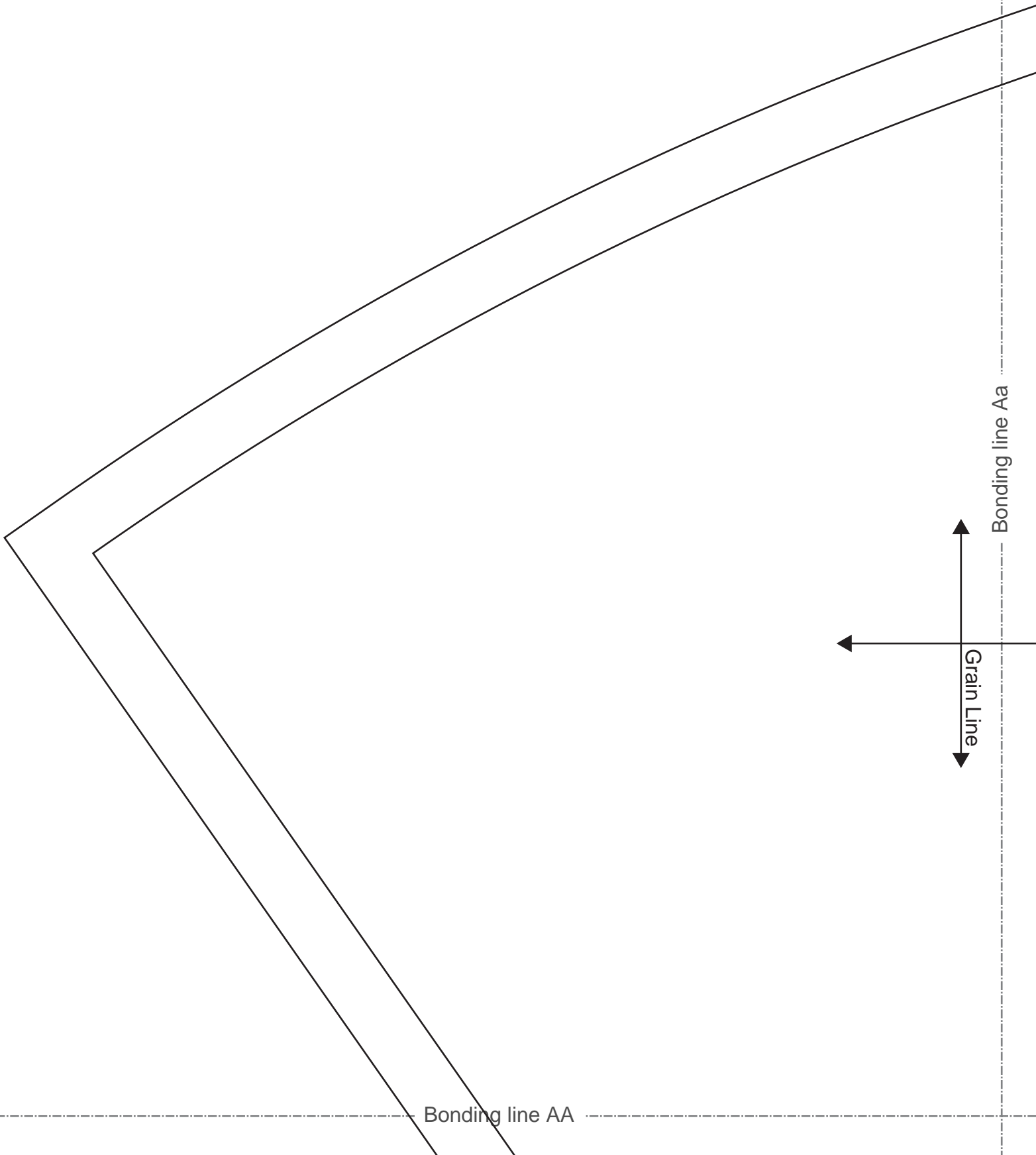


[Home](#)

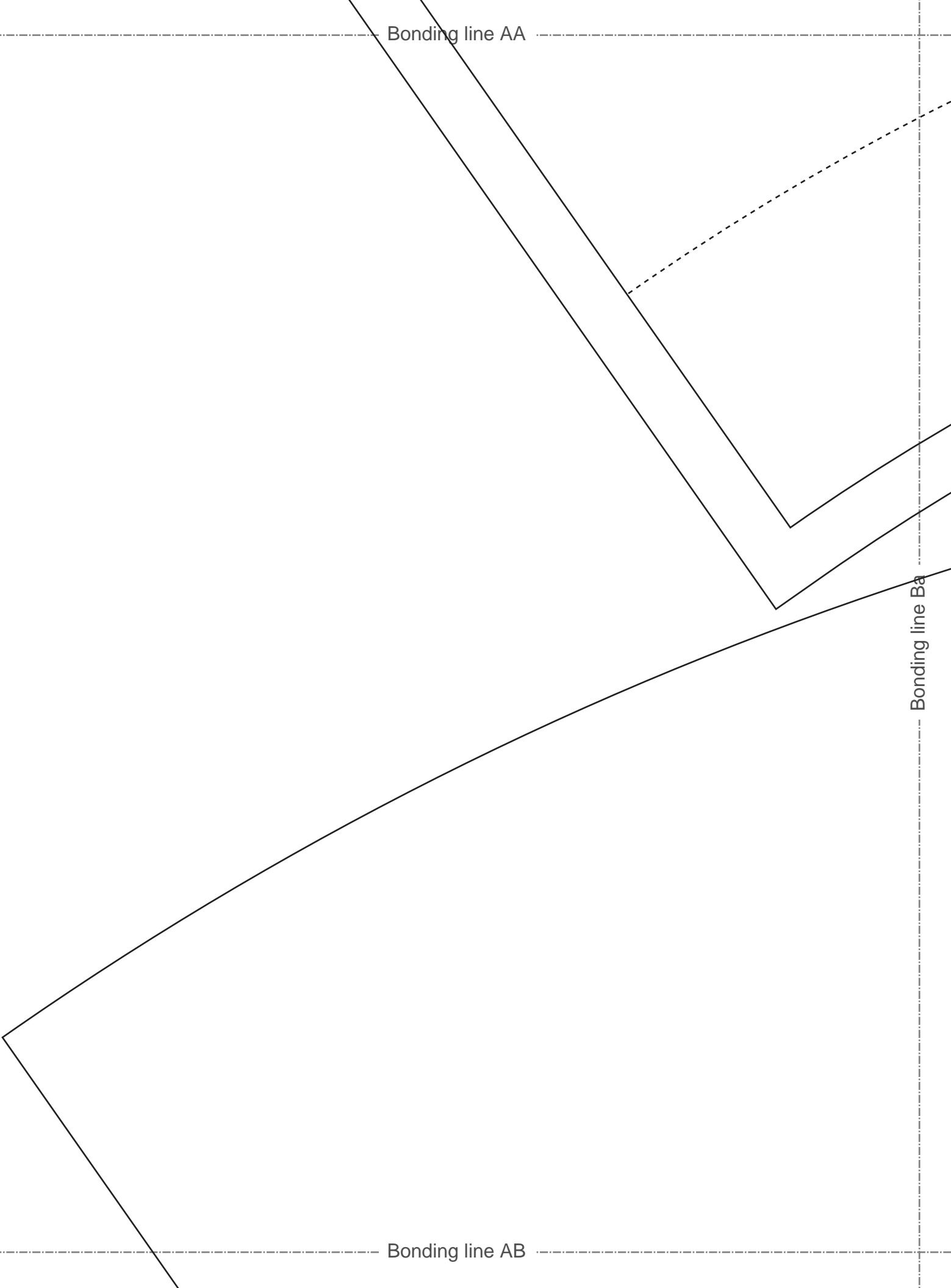
[Back to Tophat2 page](#)



Bonding line AA

Bonding line Ba

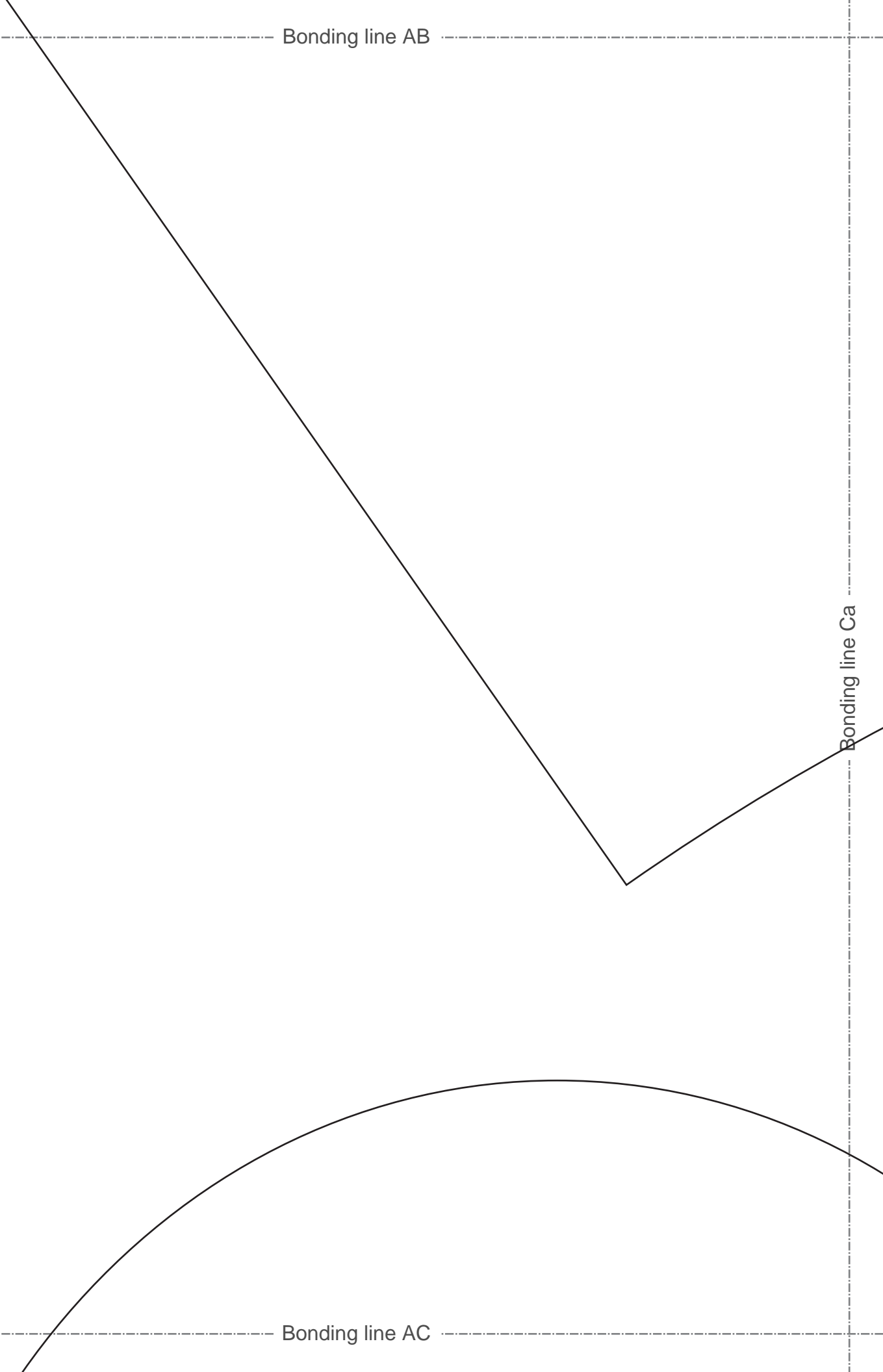
Bonding line AB



Bonding line AB

Bonding line Ca

Bonding line AC



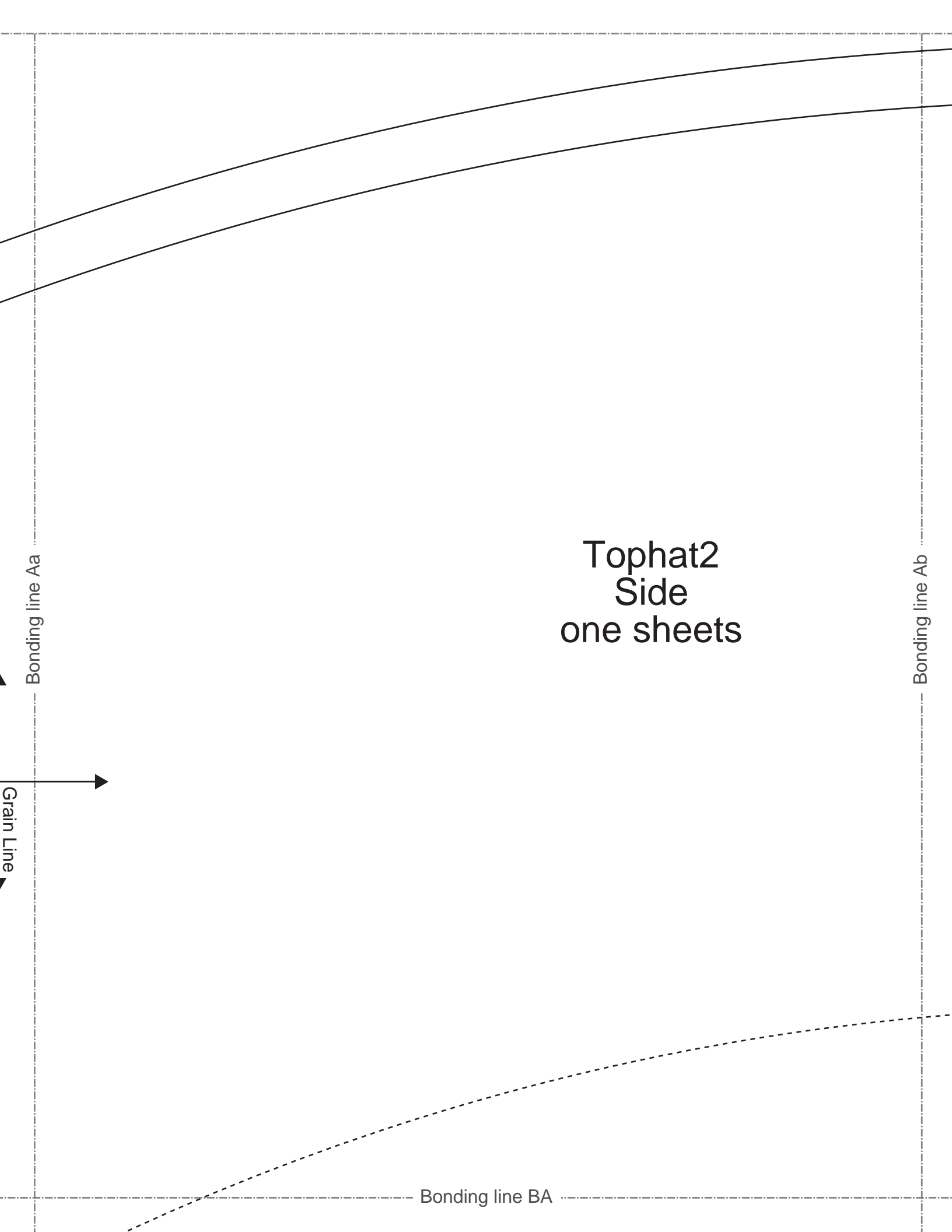
Bonding line AC

Bonding line Da



Tophatz2
Top
fusible interfacing
one sheets

Bonding line AD



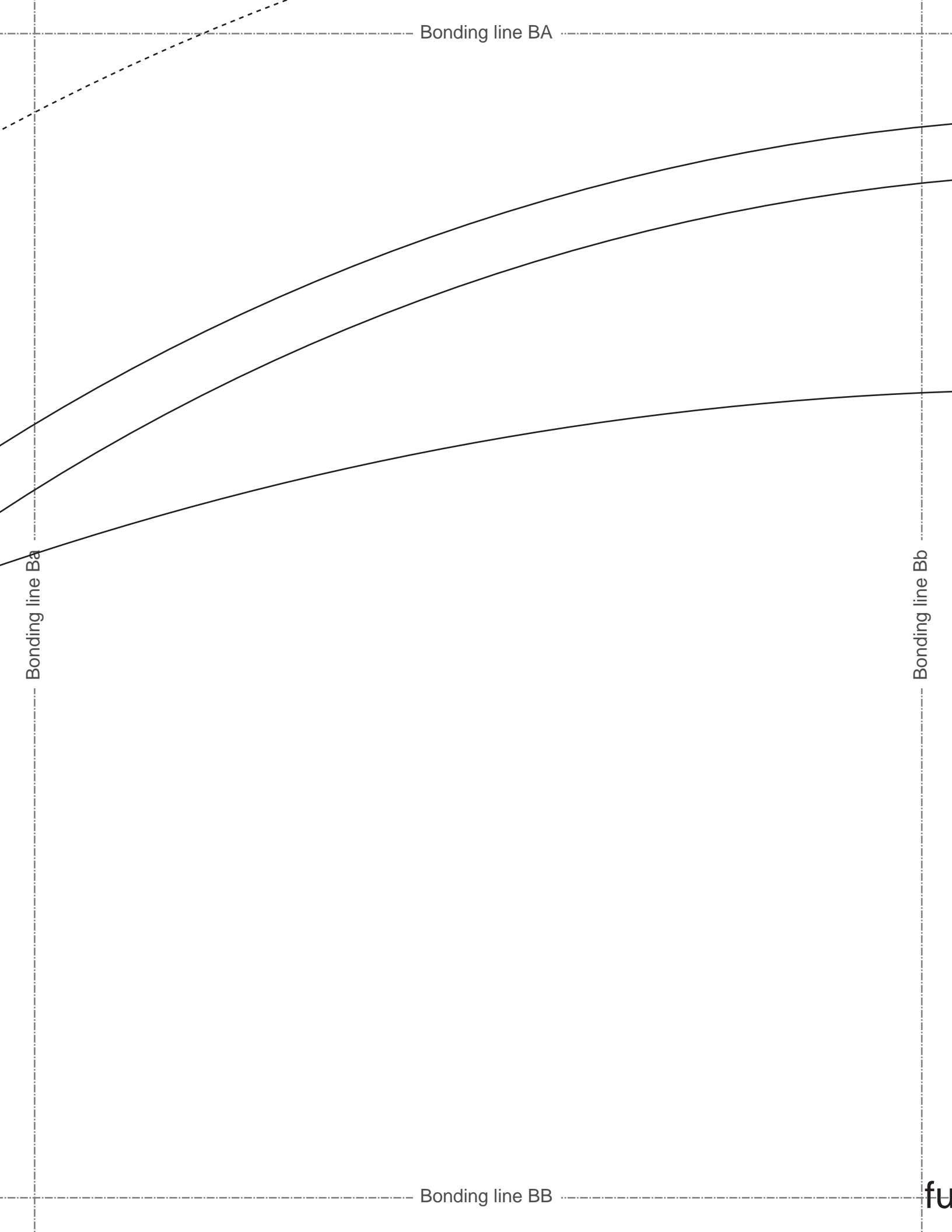
Tophat2
Side
one sheets

Bonding line Aa

Bonding line Ab

Grain Line

Bonding line BA



Bonding line BB

fu

Bonding line Ca

Bonding line Cb

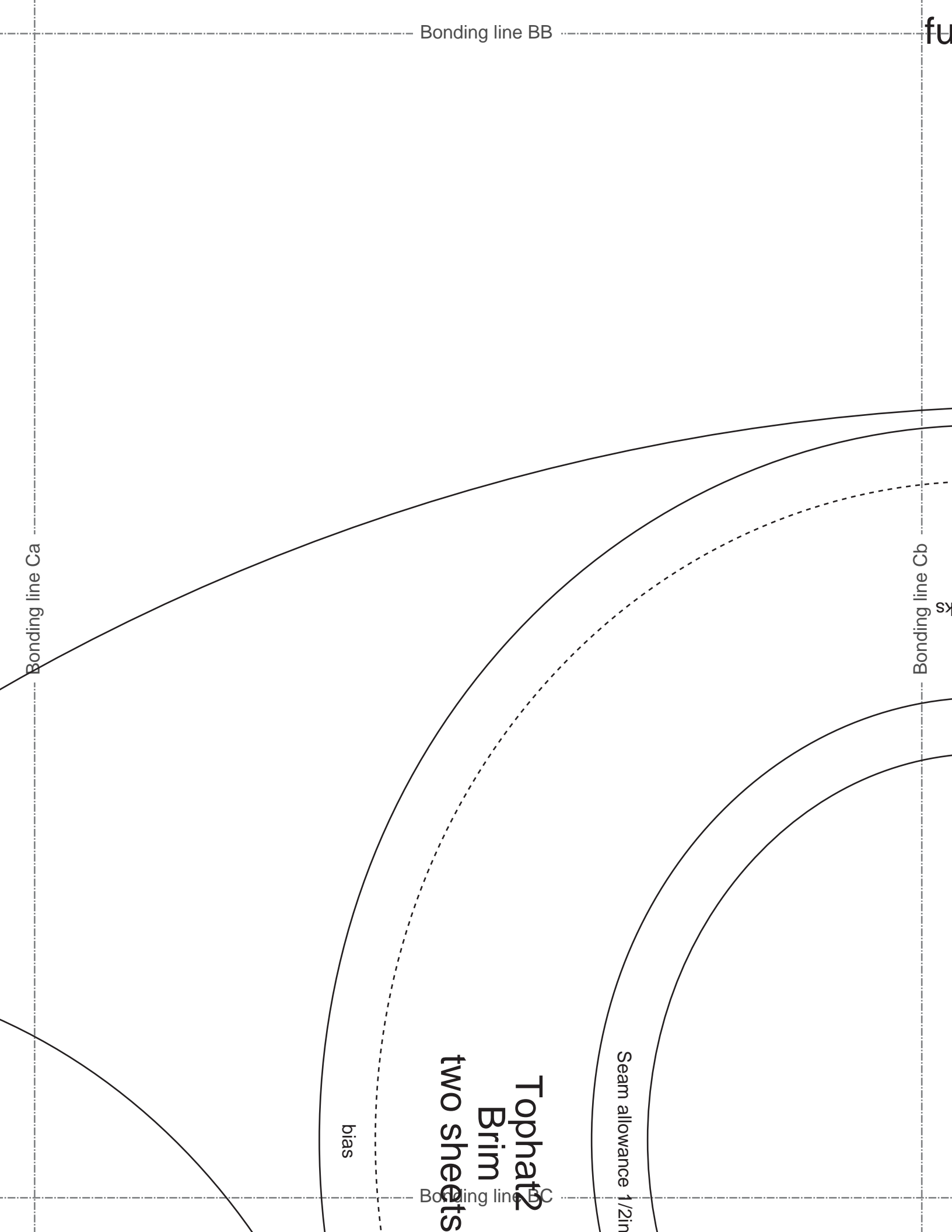
sk

Seam allowance 1/2in

Tophat²
Brim
two sheets

bias

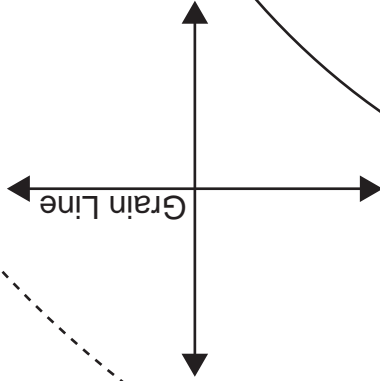
Bonding line BC



Bonding line Da

Bonding line BC
ats
n
eets

ce 1/2in.



Bonding line Db

Bonding line BD

DRCOS
 SITE <http://dr-cos.info/en/> <http://dr-cos.com/jp/>
 MAIL info@dr-cos.com
 Twitter [@drcos_com](https://twitter.com/@drcos_com)
 facebook <https://www.facebook.com/drcoscom>

match marks



Bonding line Ab



size

7 1/2
23.5in.

Bonding line Ac

How to make

Sorry if I haven't made myself understood in English. You know I'm poor at English.

1. Apply fusible interfacing to "Top" piece
2. Fold the top of "Sidebelt" by 1 cm
3. Sew the "Side" stitch the stitched part
4. Sew the "Top" and "Side" and cut off
5. Sew the two "Brim" pieces
6. Insert the wire in the bias position of "Brim"
7. Sew the "Brim" and "Side"

match marks



Bonding line CA

match marks

Bonding line CA



Seam allowance 1/2in.

Bonding line Bb

Bonding line Bc



Tophat2
Side

fusible interfacing
one sheets

Bonding line CB

fusible interfacing one sheets

Bonding line CB

Bonding line Cb

match marks



Bonding line Cc

Bonding line CC

DRCOS
SITE <http://dr-cos.intel/en> <http://dr-cos.com/jp>
MAIL info@dr-cos.com
TWITTER https://twitter.com/@drcos_com
FACEBOOK <https://www.facebook.com/drcoscom>

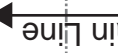
Bonding line CC

dfj/df-cqs.com(fj)
ifcos_cqin
ok.com/dicoscom

OS

size
7 1/2
23.5in.

Seam allowance 1/2in.



Bonding line Dc

Bonding line CD

Bonding line Db

match marks



Bonding line Ac

Bonding line Ad

myself understood (well)
poor at English.

to "Top" "Side" "Brim"
by 1 cm with an iron and sew to "Side"
itched part (cut off unnecessary part of the seam allowance)
nd cut off the seam allowance 2 mm left
ition of "Brim" and bias

Bonding line DA

Bonding line DA

Bonding line Bc

Bonding line Bd

Bonding line DB



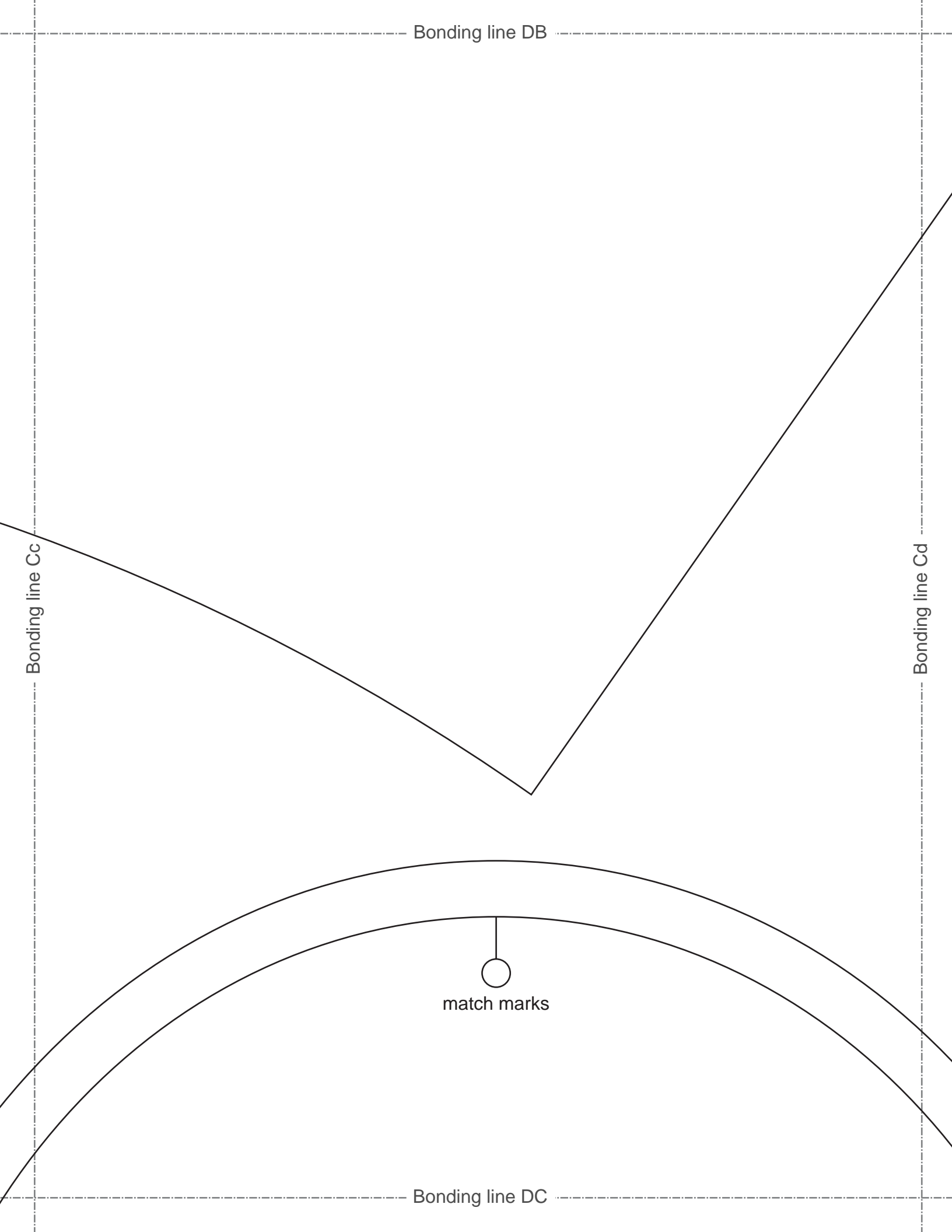
Bonding line DB

Bonding line Cc

Bonding line Cd

match marks

Bonding line DC



Bonding line DC

Bonding line Dd



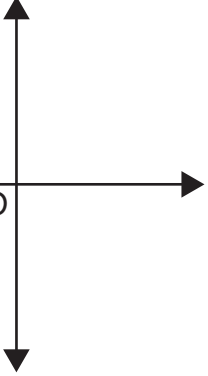
Tophat2
Top
one sheets

match marks



Bonding line DD

Bonding line Dc



Grain Line

Bonding line Ad

DRCOS

SITE [http://dr-cos.info\(en\)](http://dr-cos.info(en)) [http://dr-cos.com\(jp\)](http://dr-cos.com(jp))
MAIL info@dr-cos.com
Twitter https://twitter.com/@drcos_com
facebook <https://www.facebook.com/drcoscom>

Tophatz2
Brim
fusible interfacing
one sheets

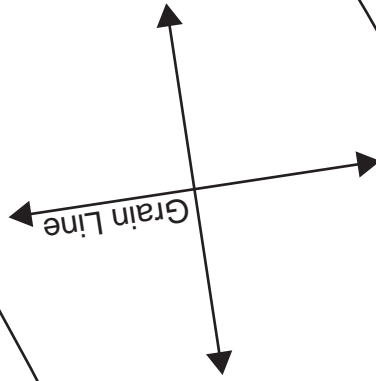
Bonding line Ae

Bonding line EA

Bonding line EA

Bonding line Bd

Bonding line Be



DRCOS

SITE <http://dr-cos.info/en> <http://dr-cos.com/jp>

MAIL info@dr-cos.com

Twitter https://twitter.com/@drcos_com

facebook <https://www.facebook.com/drcoscom>

Tophat2
 Side Belt
 one sheets

Bonding line EB

Bonding line EB

Bonding line Cd

Bonding line Ce

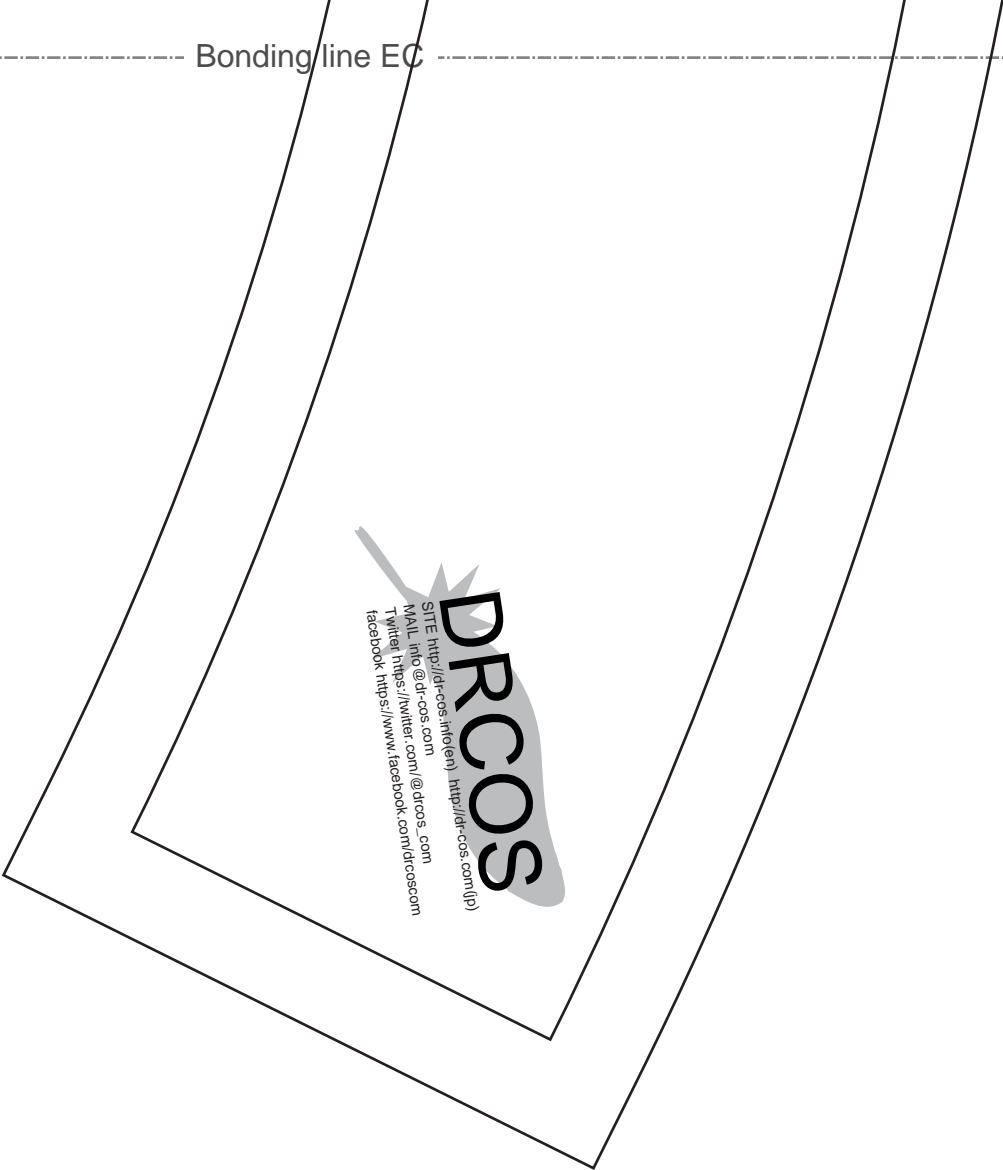
Seam allowance 1/2in.



Bonding line EC

Bonding line EC

Bonding line Dd



Bonding line De

Bonding line ED

Bonding line Ae

Bonding line FA



SITE <http://drcos.info/en> <http://drcos.com/jp>
MAIL info@drcos.com
Twitter https://twitter.com/drcos_com
facebook <https://www.facebook.com/drcoscom>

Bonding line FA



Bonding line Be

Bonding line FB