

Home
Back to Tophat2 page



Bonding line AA

Bonding line Aa

... understood (well)
... at English.
... p" "Side" "Brim"
... cm with an iron and sew to "Side"
... d part (cut off unnecessary part of the seam allowance)
... t off the seam allowance 2 mm left
... of "Brim" and bias

Bonding line AA

Bonding line AB

match marks



How to make

Sorry if I haven't made myself understood in English. You know I'm poor at English

1. Apply fusible interfacing to "Top" "Side"
2. Fold the top of "Sidebelt" by 1 cm with a
3. Sew the "Side" stitch the stitched part (cut
4. Sew the "Top" and "Side" and cut off the s
5. Insert the wire in the bias position of "Brim"
6. Sew the "Brim" and "Side"
7. Sew the "Brim" and "Side"

Bonding line Ba

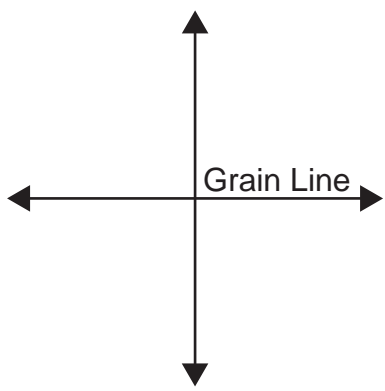
t2
ets

Bonding line AB

Tophat2
Side
one sheets

Bonding line AC

Bonding line Ca

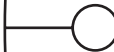


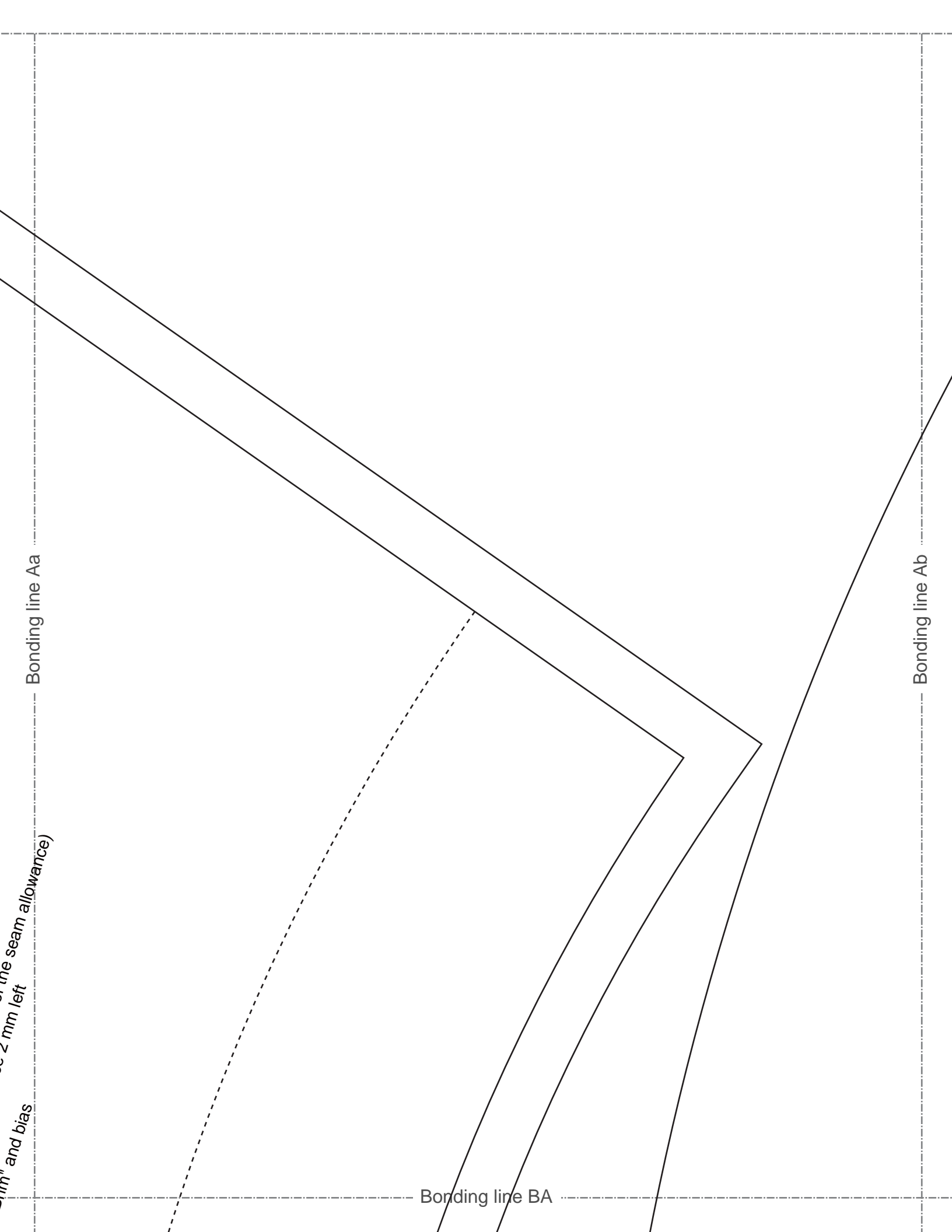
Grain Line

Bonding line AC

Bonding line AD

Bonding line marks



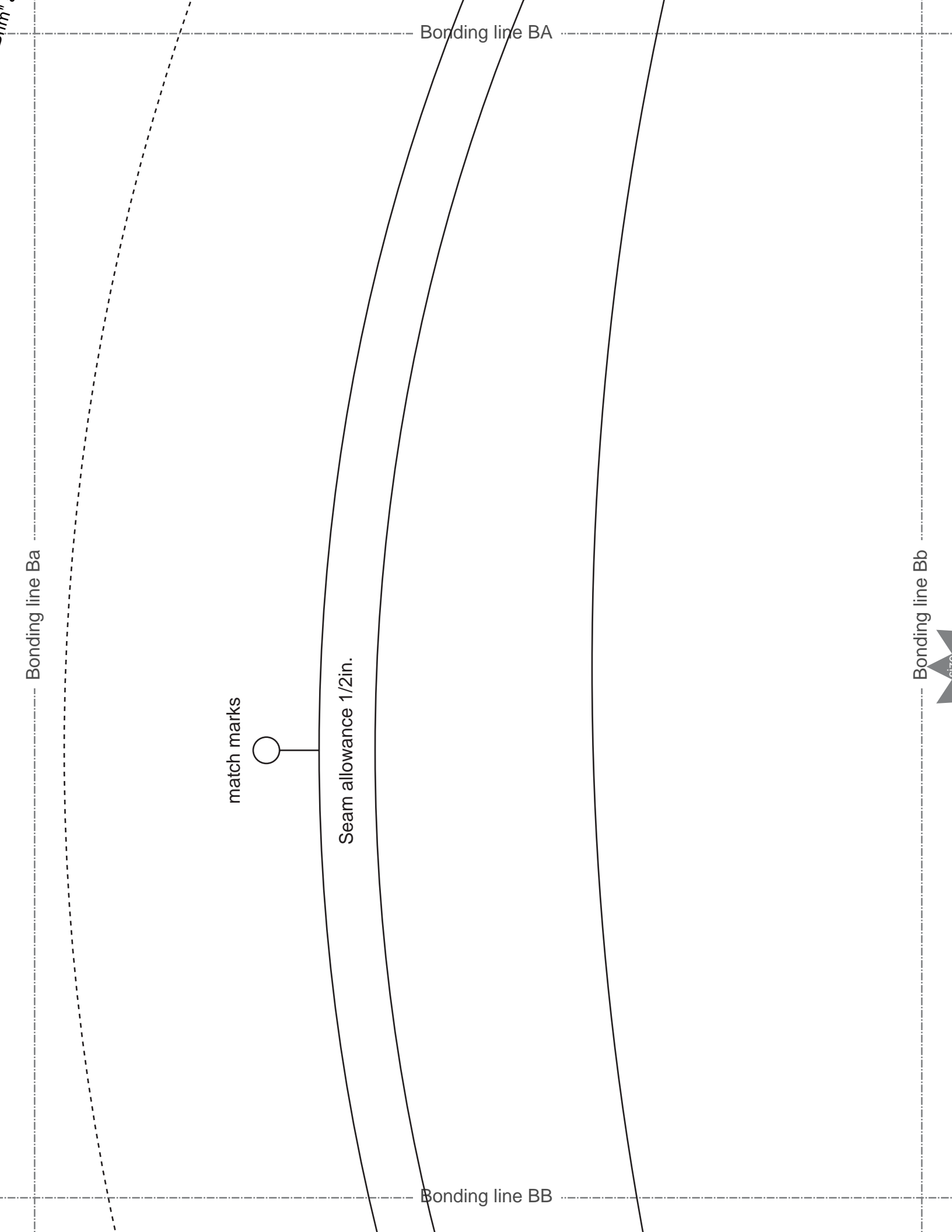


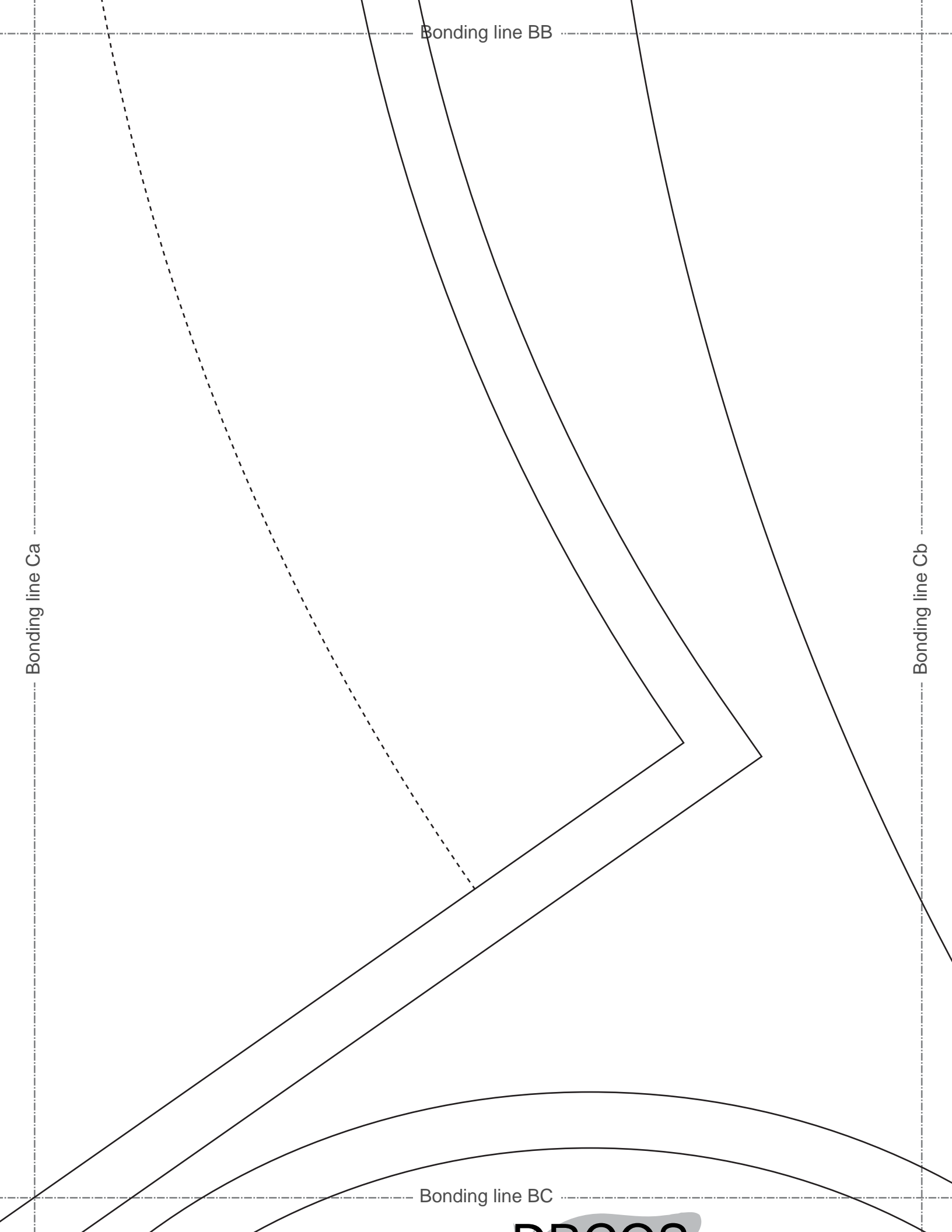
Bonding line Aa

Bonding line Ab

Bonding line BA

seam allowance
2 mm left
and bias





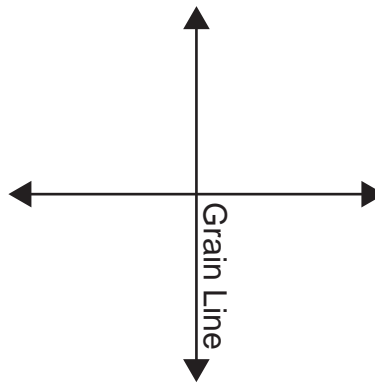
Bonding line BC

DRCOS

SITE [http://dr-cos.info\(en\)](http://dr-cos.info(en)) [http://dr-cos.com\(jp\)](http://dr-cos.com(jp))
MAIL info@dr-cos.com
Twitter https://twitter.com/drcos_com
facebook <https://www.facebook.com/drcoscom>



Tophat2
Top
one sheets



Seam allowance 1/2in.

Bonding line BD

Bonding line Bc

Bonding line Db

DRCOS

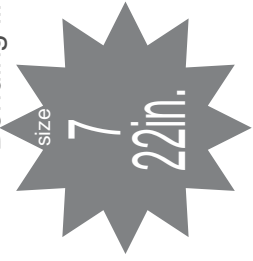
SITE <http://dr-cos.info/en> <http://dr-cos.com/jp>
MAIL info@dr-cos.com
Twitter [@drcos_com](https://twitter.com/@drcos_com)
facebook <https://www.facebook.com/drcos.com>

Bonding line Ab

Bonding line Ac

Bonding line CA

Bonding line Bb



Bonding line CA

Tophat2
Side
fusible interfacing
one sheets

Bonding line CB

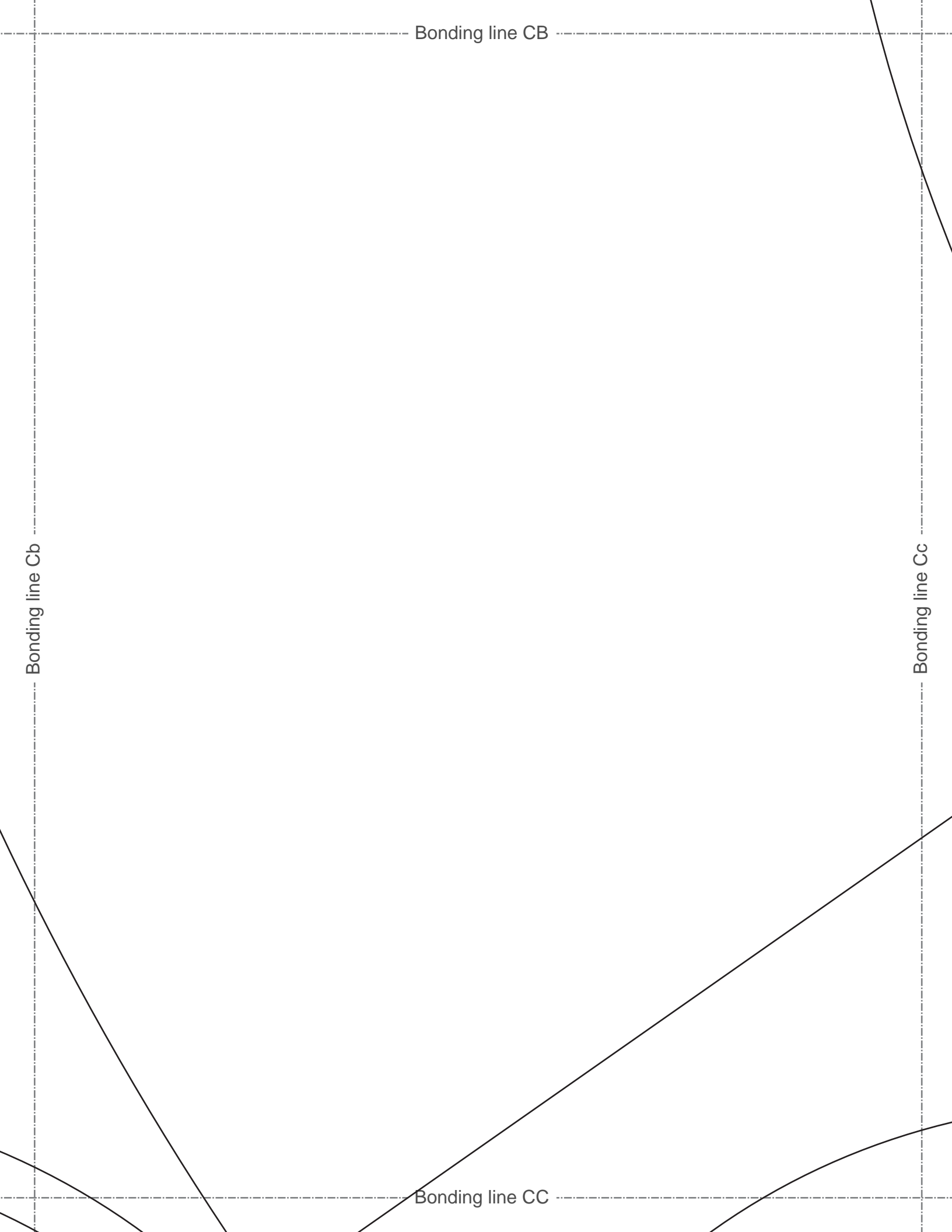
Bonding line Bc

Bonding line CB

Bonding line Cb

Bonding line Cc

Bonding line CC



Bonding line CC

Bonding line Db

match marks



Bonding line Dc

Bonding line CD

Bonding line Ac

Bonding line Ad

DRCOS

SITE <http://dr-cos.info/en> <http://dr-cos.com/jp>
MAIL info@dr-cos.com
Twitter [@drcos_com](https://twitter.com/@drcos_com)
facebook <https://www.facebook.com/drcoscom>

Bonding line DA

Bonding line Bc

Bonding line DA



Seam allowance 1/2in.

match marks



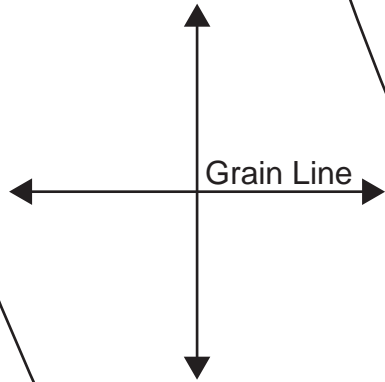
Bonding line Bd

Tophat2 Side Belt one sheets

Bonding line DB

or

Bonding line DB



Bonding line Cc

Bonding line Cd

DRCOS

SITE [http://dr-cos.info\(en\)](http://dr-cos.info(en)) [http://dr-cos.com\(jp\)](http://dr-cos.com(jp))
MAIL info@dr-cos.com

Bonding line DC

DRCOS

SITE <http://dr-cos.info/en> <http://dr-cos.com/jp>
MAIL info@dr-cos.com
Twitter https://twitter.com/drcos_com
facebook <https://www.facebook.com/drcoscom>

Bonding line DC

Bonding line Dc

Bonding line Dd



**Tophat2
Brim
fusible interfacing
one sheets**

Bonding line DD

DRCO

SITE [http://dr-cos.info\(en\)](http://dr-cos.info(en)) <http://dr-cos.com>
MAIL info@dr-cos.com
Twitter https://twitter.com/drcos_c
facebook <https://www.facebook.com/drcos.com>

size
7
22in.

Top hat
Top
fusible inter
one she

Bonding line Ad

Bonding line

DRCOS

Bonding line EA

DRCOS

SITE [http://dr-cos.info\(en\)](http://dr-cos.info(en)) [http://dr-cos.com\(jp\)](http://dr-cos.com(jp))
MAIL info@dr-cos.com
Twitter https://twitter.com/drcos_com
facebook <https://www.facebook.com/drcoscom>

Bonding line EA



Bonding line Bd

Bonding line Be

match marks

Seam allowance 1/2in.



**Tophat2
Brim
two sheets**

bias

Bonding line EB

COS

Info(en) <http://dr-cos.com>(jp)
com
er.com/@drcos_com
www.facebook.com/drcoscom

size
7
22in.

Bonding line
phat2
Top
interfacing
sheets

Bonding line FA