

[Home](#)
[Back to Tophat2 page](#)

DRCOS

SITE <http://dr-cos.info/en> <http://dr-cos.com/p>
MAIL info@dr-cos.com
Twitter https://twitter.com/drcos_com
facebook <https://www.facebook.com/drcos.com>

Bonding line AA

Bonding line Aa

*made myself understood (well)
now I'm poor at English.
facing to "Top" "Side" "Brim"
debelt" by 1 cm with an iron and
with the stitched part (cut off unnecessary
"Side" and cut off the seam allowance 2 mm left
pieces
bias position of "Brim" and bias
de"*

Bonding line AA

How to make

Sorry if I haven't made myself
in English. You know I'm poor

1. Apply fusible interfacing to
2. Fold the top of "Sidebelt" by
3. Sew the "Side" stitch the stitc
4. Sew the "Top" and "Side" and
5. Insert the wire in the bias positio
6. Sew the "Brim" and "Side"
7. Sew the "Brim" and "Side"

match marks



Tophat2
Side
one sheets

Bonding line AB

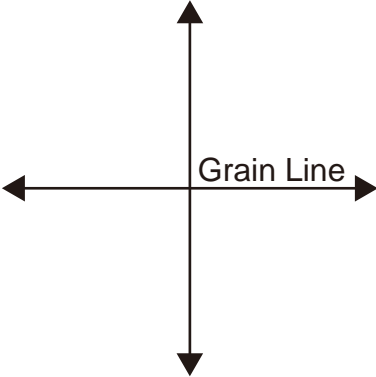
Bonding line Ba

Bonding line AB

Bonding line AC

Bonding line Ca

Grain Line

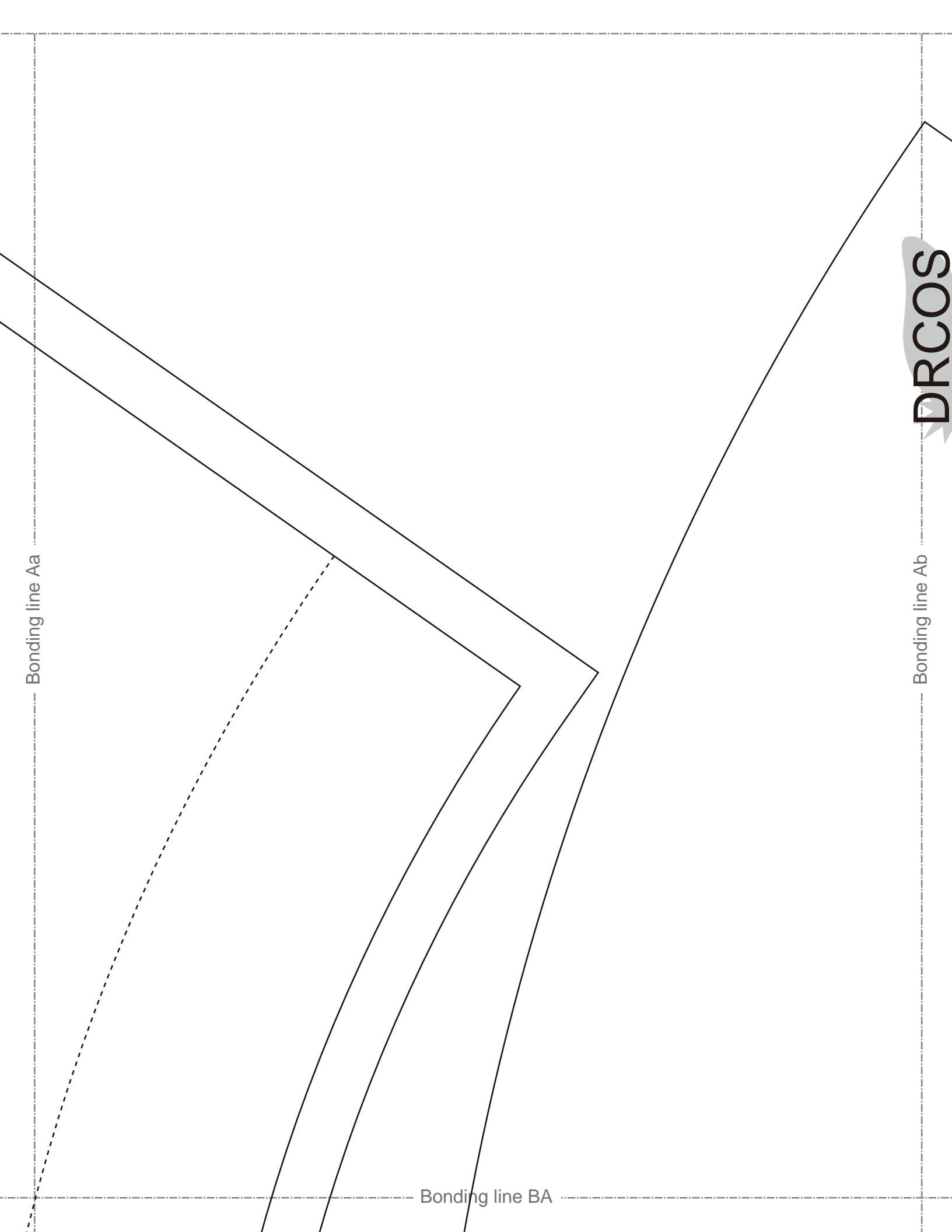


Bonding line Aa

Bonding line BA

Bonding line Ab

DRCOS



Bonding line Ba

Bonding line BA

match marks

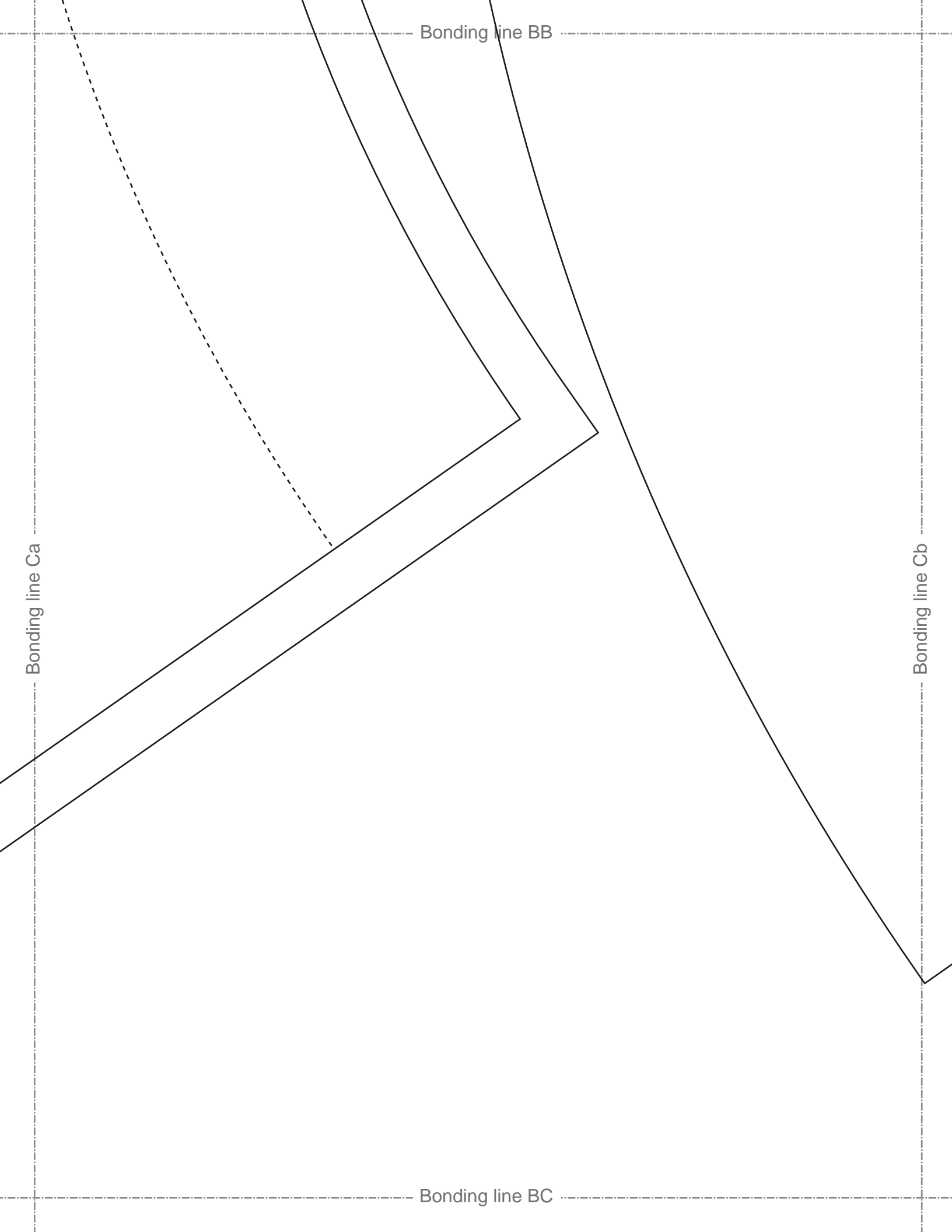


Seam allowance 1/2in.

Bonding line BB

Bonding line Bb





Bonding line BB

Bonding line Ca

Bonding line Cb

Bonding line BC

DRCOS

SITE <http://dr-cos.info/en> <http://dr-cos.com/jp>
MAIL info@dr-cos.com
Twitter <https://twitter.com/dr-cos.com>
facebook <https://www.facebook.com/drcoscom>

Bonding line Ab

Bonding line CA

Bonding line AC

Bonding line Bb

Bonding line CA

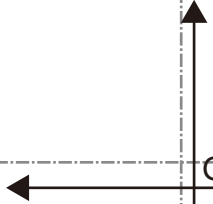
**Tophat2
Side
fusible interfacing
one sheets**



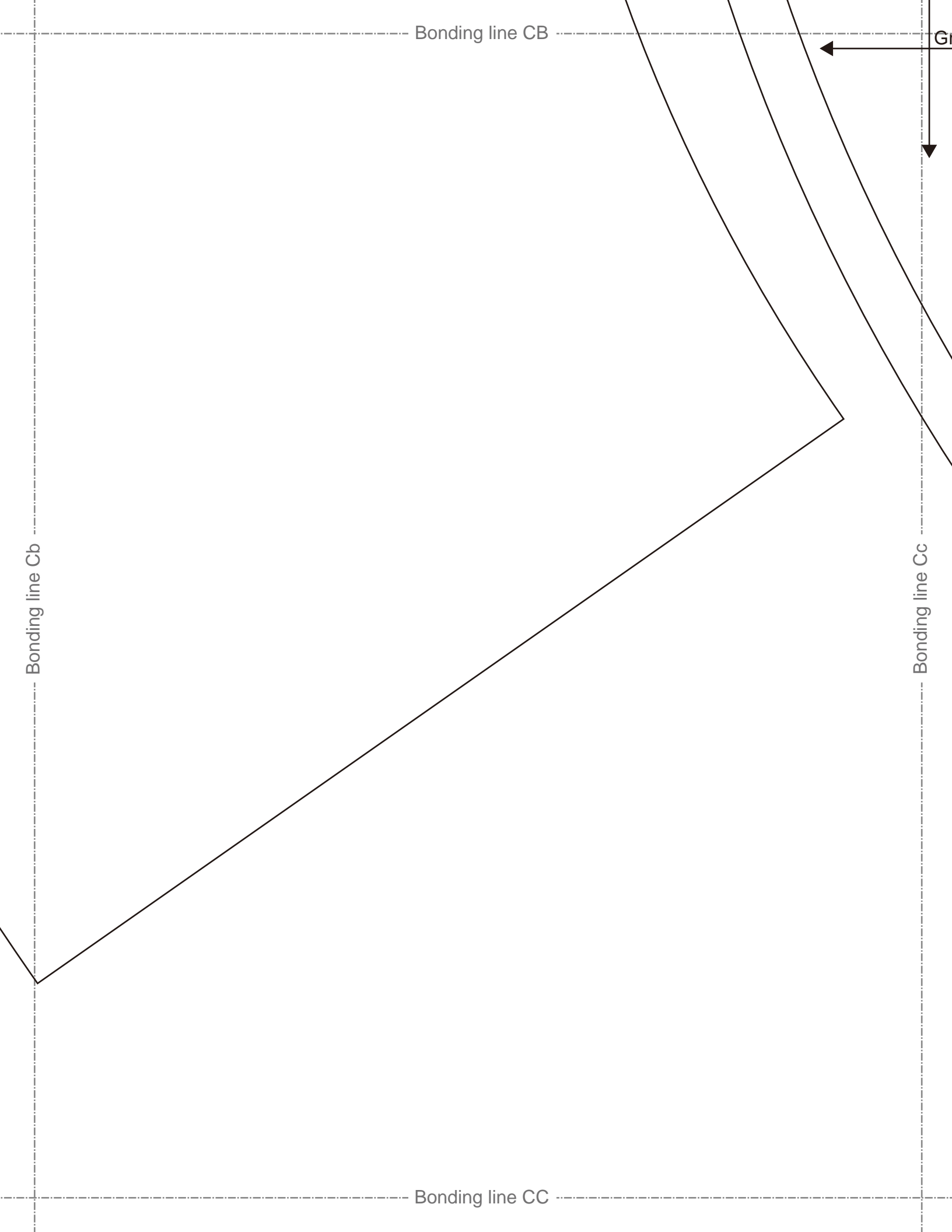
**Tophat2
Side Belt
one sheets**

Bonding line CB

Bonding line Bc
Seam allowance 1/2in.



G



Bonding line Ac

DRCOS

SITE <http://dr-cos.info/en> <http://dr-cos.com/jp>
MAIL info@dr-cos.com
Twitter <https://twitter.com/drcos>
facebook <https://www.facebook.com/drcos.com>

Bonding line DA

match marks

Bonding line Ad

Bonding line DA

DRCOS

SITE [http://dr-cos.info\(en\)](http://dr-cos.info(en)) [http://dr-cos.com\(jp\)](http://dr-cos.com(jp))
MAIL info@dr-cos.com
Twitter [@drcos_com](https://twitter.com/@drcos_com)
facebook <https://www.facebook.com/drcoscom>

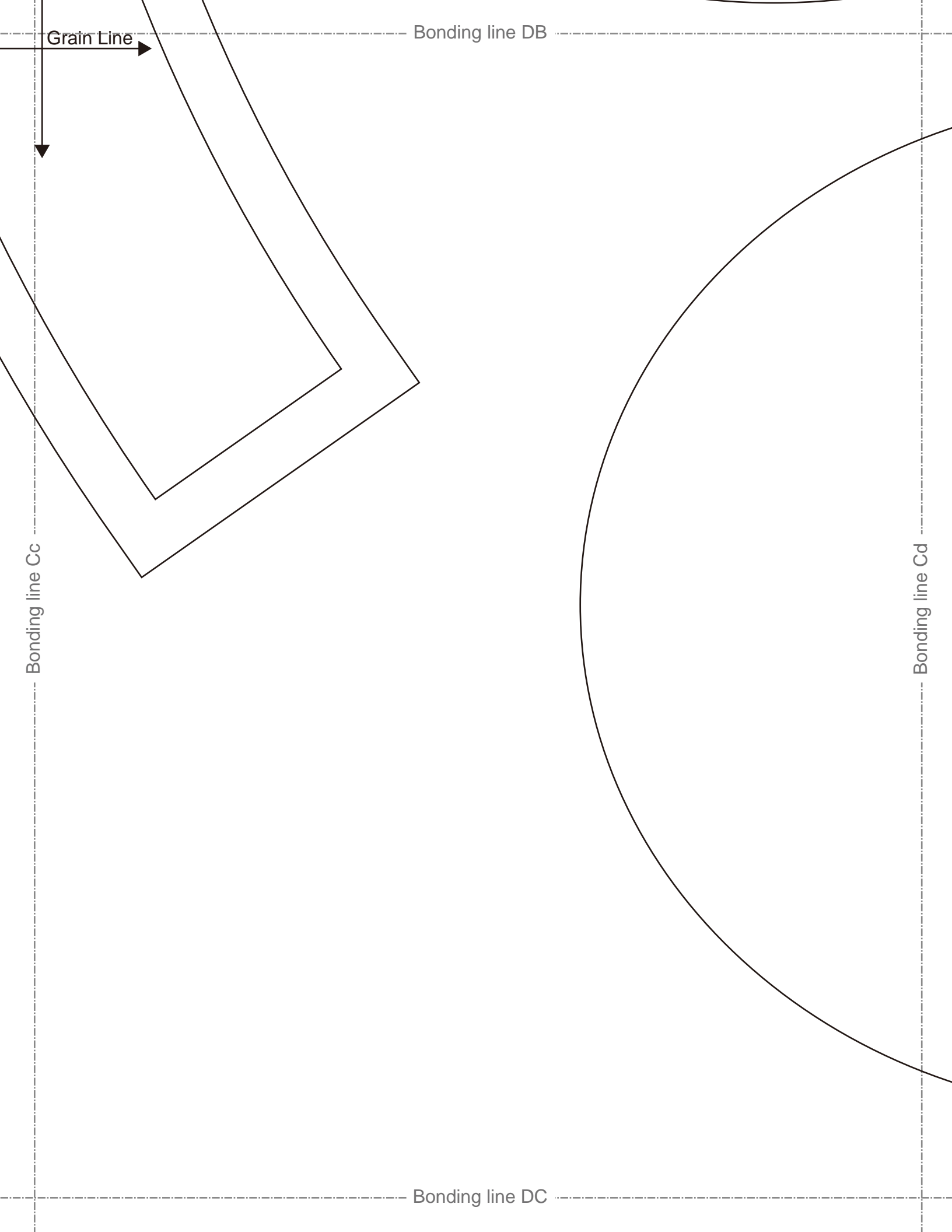
Bonding line Bc
Seam allowance 1/2in.

Bonding line Bd

**Tophat2
Brim
fusible interfacing
one sheets**

Grain Line

Bonding line DB



DRCOS

SITE [http://dr-cos.info\(en\)](http://dr-cos.info(en)) [http://dr-cos.com\(jp\)](http://dr-cos.com(jp))
MAIL info@dr-cos.com
Twitter https://twitter.com/@drcos_com
facebook <https://www.facebook.com/drcoscom>

size
6 1/4
19.6in.

Bonding line Ad

Bonding line Ae

match marks

Seam allowance 1/2in.

Tophat2
Brim
two sheets

Grain Line

bias

Bonding line EA

Bonding line EA

Bonding line Bd

size
6 1/4
19.6in.

match marks

Bonding line Be

Bonding line EB

9

Bonding line EB

DRCOS

SITE [http://dr-cos.info\(en\)](http://dr-cos.info(en)) [http://dr-cos.com\(jp\)](http://dr-cos.com(jp))
MAIL info@dr-cos.com
Twitter https://twitter.com/@drcos_com
facebook <https://www.facebook.com/drcoscom>



Tophat2
Top
fusible interfacing
one sheets

Bonding line Cd

Bonding line Ce

Bonding line EC

Bonding line FA

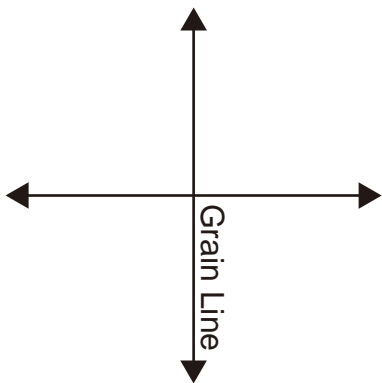
DRCOS

SITE [http://dr-cos.info\(en\)](http://dr-cos.info(en)) [http://dr-cos.com\(jp\)](http://dr-cos.com(jp))
MAIL info@dr-cos.com
Twitter https://twitter.com/drcos_com
facebook <https://www.facebook.com/drcoscom>



Tophat2
Top
one sheets

match marks



Seam allowance 1/2in.

Bonding line FB

Bonding line Be