

[Home](#)

[Back to Tophat2 page](#)

**DRCOS**

SITE <http://drcos.info/en>, <http://drcos.com/ip>

MAIL [info@drcos.com](mailto:info@drcos.com)

Twitter [@drcos\\_com](https://twitter.com/@drcos_com)

facebook <https://www.facebook.com/draos.com>

How to make

Sorry if I haven't made myself understood (well) in English. You know I'm poor at English.

1. Apply fusible interfacing to "Top" "Side" "Brim"
2. Fold the top of "Sidebelt" by 1 cm with an iron and sew to "Side"
3. Sew the "Side" stitch the stitched part (cut off unnecessary part of the seam allowance)
4. Sew the "Top" and "Side" and cut off the seam allowance 2 mm left
5. Sew the two "Brim" pieces
6. Sew the wire in the bias position of "Brim" and bias
7. Sew the "Brim" and "Side"

Bonding line Aa

Bonding line Aa

Bonding line AA

How  
Sorry  
in Engl

1. Apply f
2. Fold th
3. Sew the
4. Sew the
5. Sew the tw
6. Insert the w
7. Sew the "Br

match marks



**Tophat2**  
**Side**  
**one sheets**

Bonding line AB

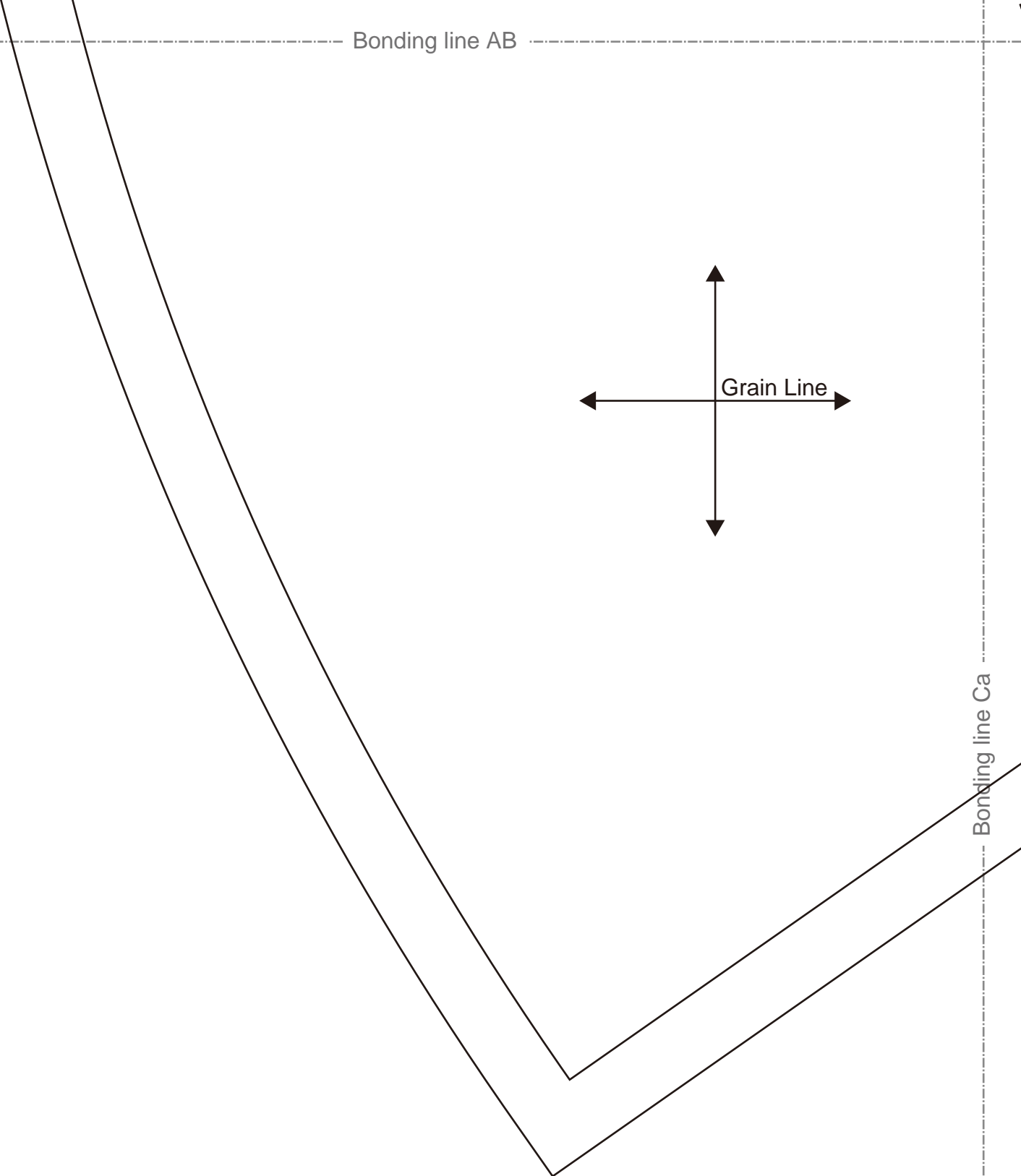
Bonding line Ba

Bonding line AB

Grain Line

Bonding line Ca

Bonding line AC



Bonding line Aa

Bonding line BA

Bonding line Ab

Bonding line Ba

Bonding line BA

match marks



Seam allowance 1/2in.

Bonding line BB

Bonding line Bb



Bonding line BB

Bonding line Ca

Bonding line Cb

**DRCOS**  
SITE <http://dr-cos.info/en> <http://dr-cos.com/pt>  
MAIL [info@dr-cos.com](mailto:info@dr-cos.com)  
Twitter <https://twitter.com/dr-cos.com>  
Facebook <https://www.facebook.com/drcoscom>

Bonding line BC

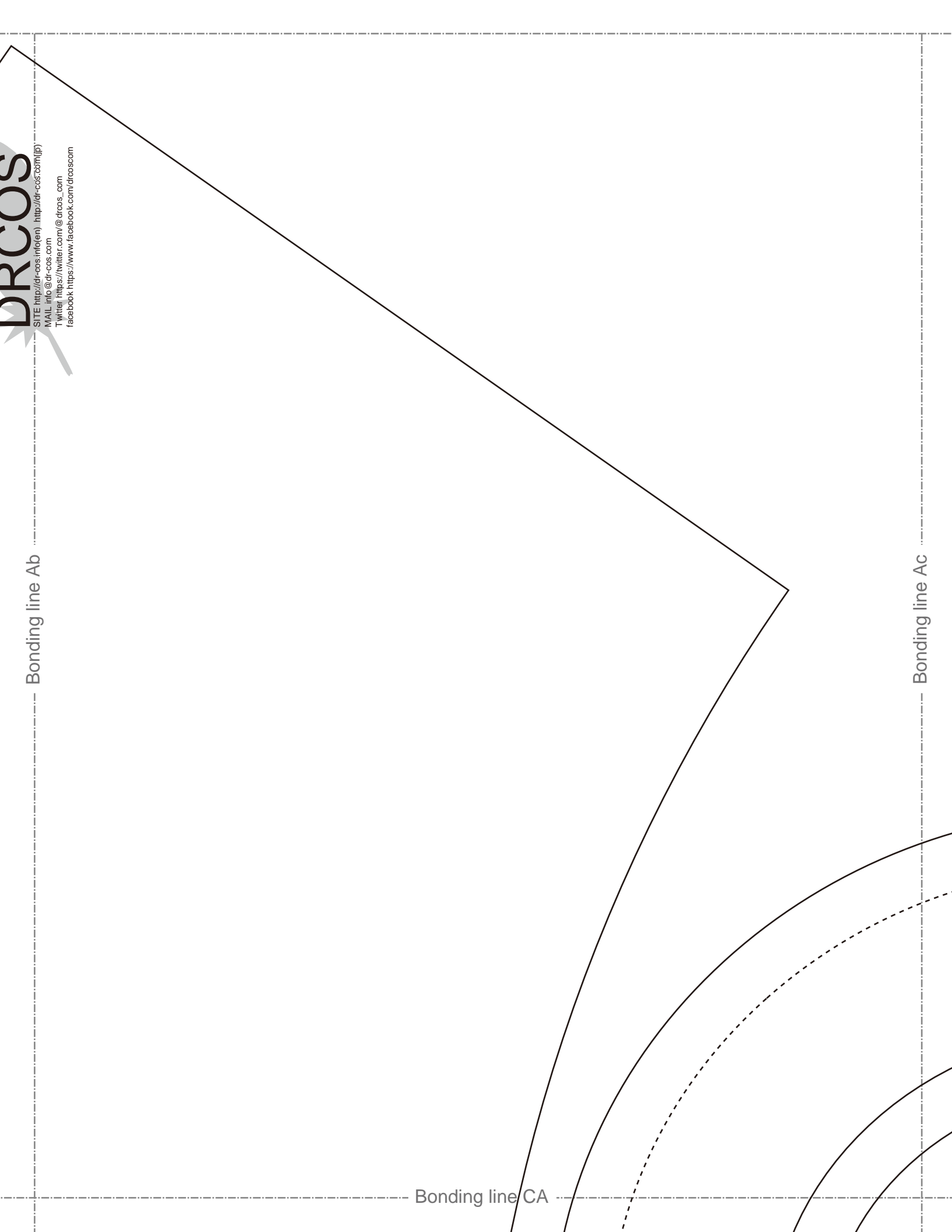
**DRCOS**

SITE <http://dr-cos.info/en> <http://dr-cos.com/jp>  
MAIL [info@dr-cos.com](mailto:info@dr-cos.com)  
Twitter [https://twitter.com/dr-cos\\_com](https://twitter.com/dr-cos_com)  
facebook <https://www.facebook.com/drcoscom>

Bonding line Ab

Bonding line Ac

Bonding line CA



Bonding line Bb

# Tophat2 Side fusible interfacing one sheets

Bonding line CA

Bonding line CB

Bonding line Bc

match marks





Bonding line CB

Bonding line Cb

Bonding line Cc

Seam allowance 1/2in.

**Tophatz  
Side Belt  
one sheets**



Bonding line CC

Bonding line Ac

Bonding line Ad

**DRCOS**

SITE [http://dr-cos.info\(en\)](http://dr-cos.info(en)) [http://dr-cos.com\(jp\)](http://dr-cos.com(jp))  
MAIL [info@dr-cos.com](mailto:info@dr-cos.com)  
Twitter [https://twitter.com/drcos\\_com](https://twitter.com/drcos_com)  
facebook <https://www.facebook.com/drcoscom>

size  
**6**  
**18.9in.**



match marks

Bonding line DA

Bonding line DA

match marks

Seam allowance 1/2in.

Grain Line

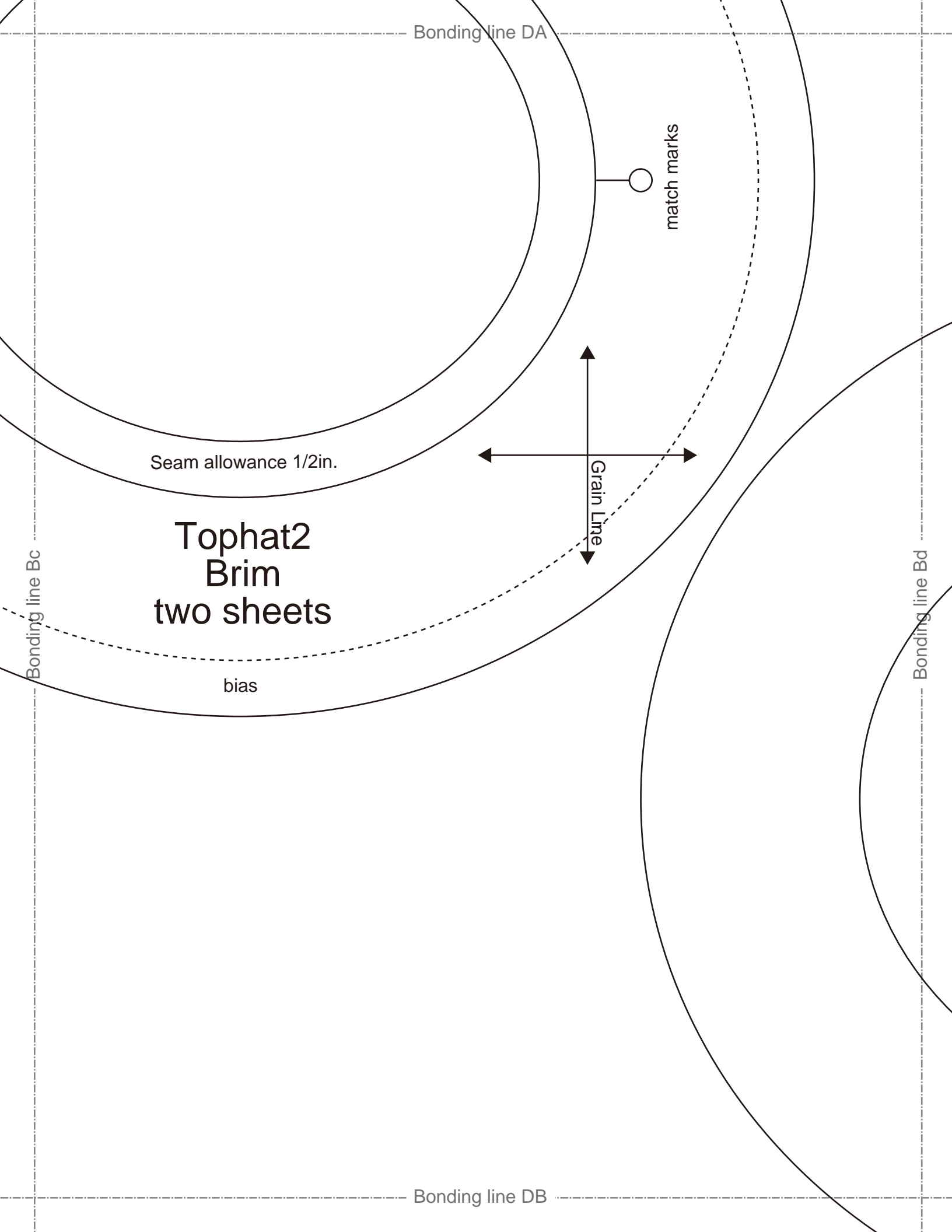
# Tophat2 Brim two sheets

bias

Bonding line Bc

Bonding line Bd

Bonding line DB



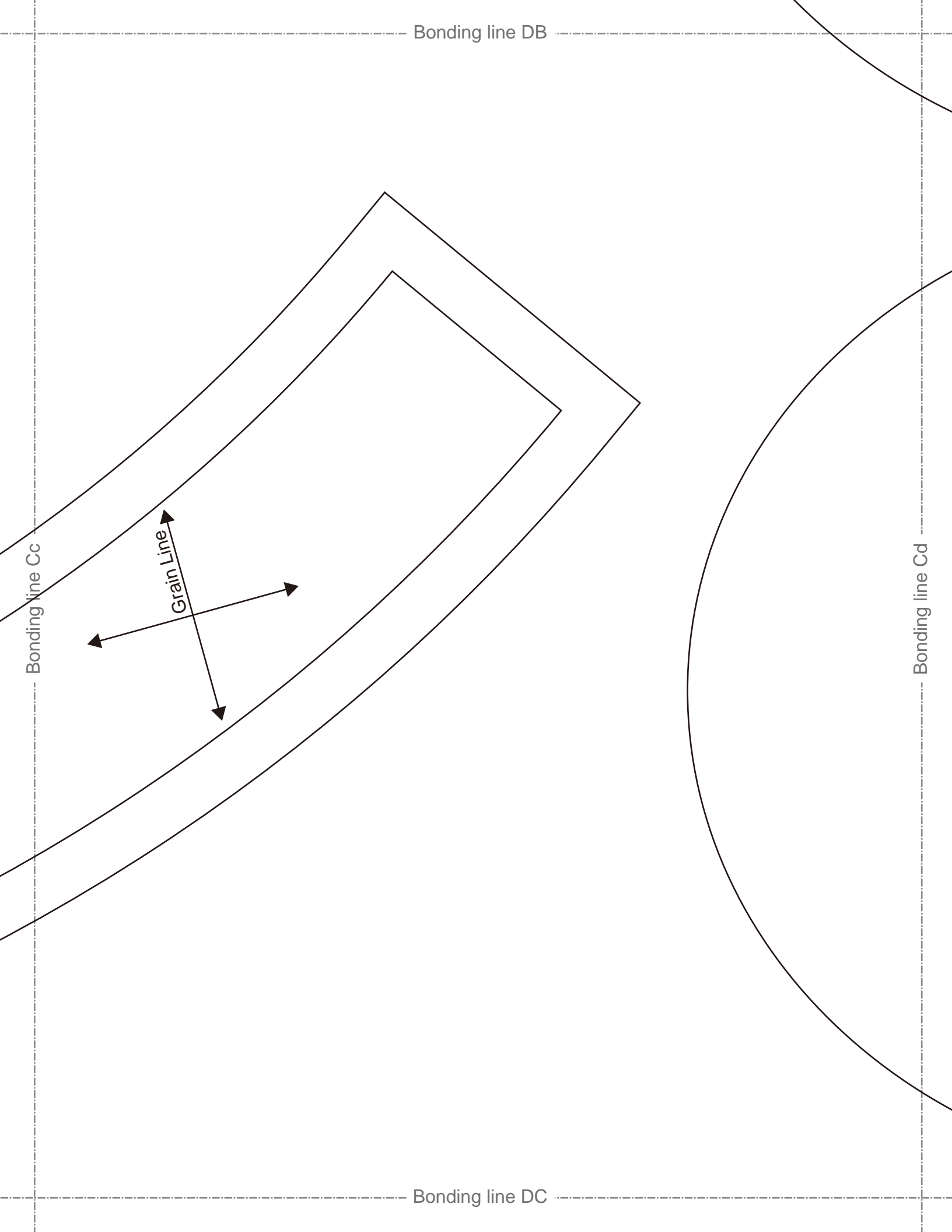
Bonding line DB

Bonding line Cc

Grain Line

Bonding line Cd

Bonding line DC



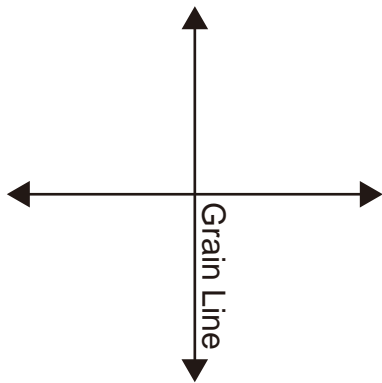
# DRCOS

SITE [http://dr-cos.info\(en\)](http://dr-cos.info(en)) [http://dr-cos.com\(jp\)](http://dr-cos.com(jp))  
MAIL [info@dr-cos.com](mailto:info@dr-cos.com)  
Twitter [https://twitter.com/@drcos\\_com](https://twitter.com/@drcos_com)  
facebook <https://www.facebook.com/drcoscom>



Tophat2  
Top  
one sheets

match marks



Seam allowance 1/2in.

Bonding line Ad

Bonding line Ae

Bonding line EA

Bonding line EA

**DRCOS**

SITE <http://dr-cos.info/en> <http://dr-cos.com/jp>  
MAIL [info@dr-cos.com](mailto:info@dr-cos.com)  
Twitter [https://twitter.com/drcos\\_com](https://twitter.com/drcos_com)  
facebook <https://www.facebook.com/drcoscom>

Bonding line Bd

Bonding line Be



**Tophat2**  
**Brim**

Bonding line EB

flexible interfacing

**Tophat2  
Brim** Bonding line EB  
fusible interfacing  
one sheets



**Tophat2  
Top**  
fusible interfacing  
one sheets

Bonding line EC

Bonding line Cd

Bonding line Ce